

CLACKAMAS COUNTY BOARD OF COUNTY COMMISSIONERS

Policy Session Worksheet

Presentation Date: April 10, 2018

Apprx Start Time: 10:30 AM

Apprx Length: 30 min

Presentation Title: French Prairie Bridge Project Update

Department: Department of Transportation and Development, City of Wilsonville

Presenters: Karen Buehrig, Transportation Planning Supervisor and Rick Gruen, County Parks Manager

Other Invitees: Mike Bezner, Assistant Director of Transportation DTD; Zach Weigel, Civil Engineer for the City of Wilsonville

WHAT ACTION ARE YOU REQUESTING FROM THE BOARD? None. This is an informational item only.

EXECUTIVE SUMMARY:

In the Fall of 2016, the City of Wilsonville began the French Prairie Bridge planning project which is proposing a bicycle/pedestrian/emergency-access crossing of the Willamette River west of the Interstate 5-Boone Bridge in Wilsonville. The primary outcomes of this project are to develop preliminary designs for this proposed new bridge. The intent of the project is to address the following questions:

- Where are the preferred landing points for the bridge?
- What is the preferred bridge type?
- What is the estimated cost of the preferred bridge and how might its construction be funded?

In April of 2017 the project team shared information with the BCC about the project. Since that time, the Technical Advisory Committee and the Stakeholder Task Force have been meeting and have provided input on alternative landing points and criteria for alternative selection. Attached is a map of the alignment corridors that have been under review and a schedule of the project.

On April 12th, the Stakeholder Task Force will meet to develop a recommendation on the alignment corridor for the bridge. After the corridor is selected, the preferred bridge type will be discussed and then an estimated cost of the bridge can be developed.

This project is a specific interest to Clackamas County because while one side of the bridge will be located in Wilsonville, the southern terminus of the bridge will be in unincorporated Clackamas County. In addition, the alignment corridors under consideration traverse over property owned by the Clackamas County Parks Department and is used as the Boones Ferry Marina.

The purpose of this policy session is to allow the BCC to become familiar with the alternatives being considered and their potential impacts on Boones Ferry Marina, Butteville Road and the surrounding area.

FINANCIAL IMPLICATIONS (current year and ongoing):

Is this item in your current budget? ☒ YES ☐ NO

The staff time required to coordinate with Wilsonville on this project is currently within the budget, but funding to construct the bridge has not been identified.

What is the cost? \$ Unknown What is the funding source? Not yet identified

The cost of the current project to identify bridge location and type is being funded by the City of Wilsonville and funding from the Metropolitan Transportation Improvement Program (MTIP)

STRATEGIC PLAN ALIGNMENT:

- How does this item align with your Department's Strategic Business Plan goals?

The French Prairie Bridge project supports the goal of providing "repair, construction, preservation and emergency response services to the traveling public so they can live, work, conduct business, recreate and travel safely on well-maintained County transportation system"

- How does this item align with the County's Performance Clackamas goals?

The French Prairie Bridge project aligns with the following Performance Clackamas Strategic Priorities

- **Build a strong infrastructure**
- **Ensure safe, healthy and secure communities**

LEGAL/POLICY REQUIREMENTS:

This is an informational session. During the course of the French Prairie Bridge project to identify location and bridge type, the various legal and policy requirement of siting the bridge will be identified.

PUBLIC/GOVERNMENTAL PARTICIPATION:

Staff from the County's Department of Transportation and Development, as well as Business and Community Services participate in the technical review of the information produced from this project. There are a variety of public engagement opportunities scheduled throughout the project.

OPTIONS:

The policy session is informational only.

RECOMMENDATION:

None, this is an informational item only.

ATTACHMENTS:

Attachment 1: French Prairie Bridge: Alignment Alternatives

Attachment 2: French Prairie Bridge: Updated Schedule

SUBMITTED BY:

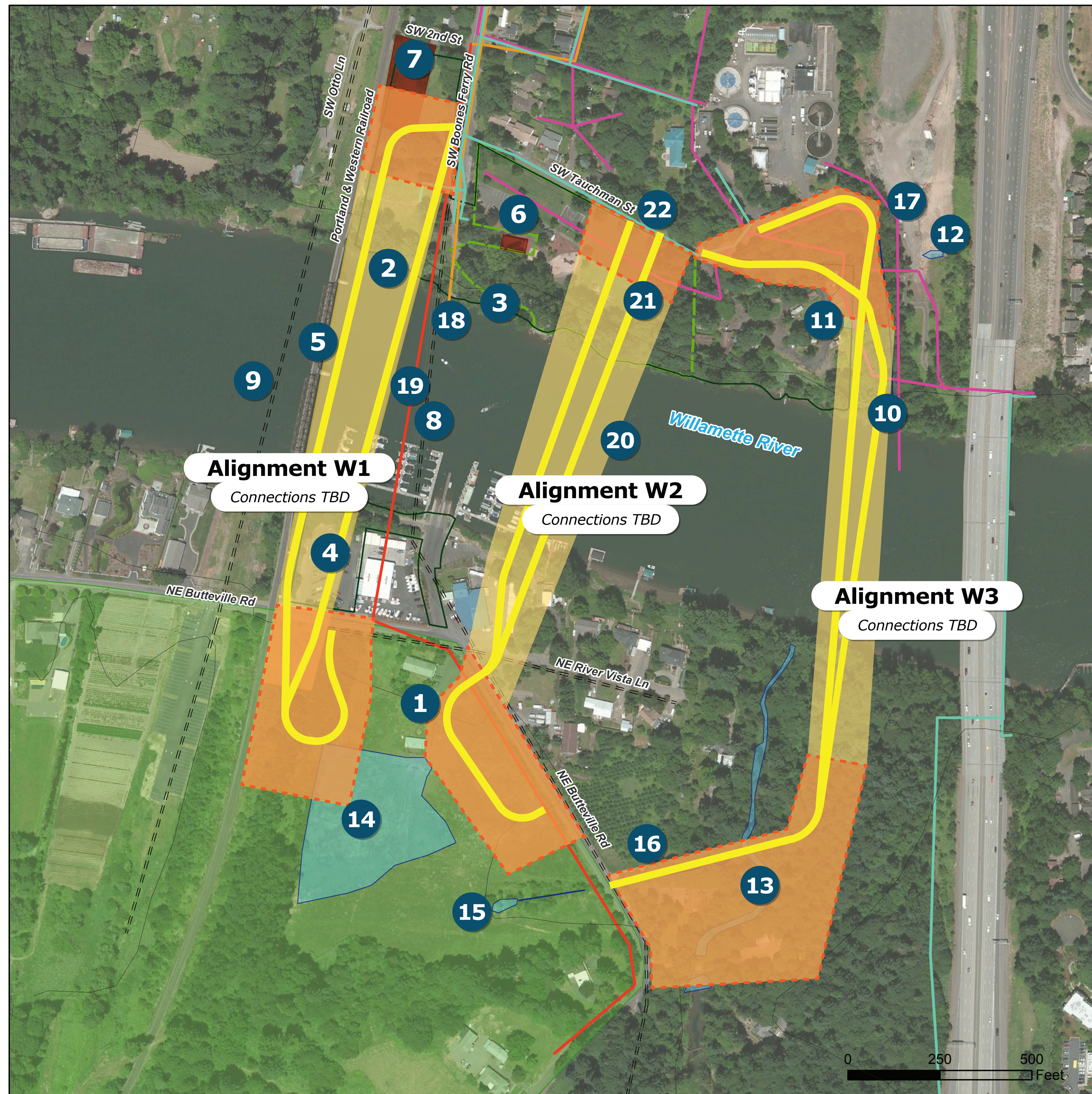
Division Director/Head Approval _____

Department Director/Head Approval _____

County Administrator Approval _____

For information on this issue or copies of attachments, please contact Karen Buehrig @ 503-742-4683
--

ALIGNMENT ALTERNATIVES



KEY

- 1 Land zoned Exclusive Farm Use
- 2 Boone's Ferry Park subject to Section 4(f)
- 3 Boone's Ferry Park subject to Section 6(f)
- 4 Boone's Ferry Boat Launch subject to Section 4(f)
- 5 Portland & Western Railroad
- 6 Tauchman House
- 7 Apple orchard in Boone's Ferry Park
- 8 PGE overhead power lines
- 9 BPA overhead transmission lines
- 10 Ephemeral drainage channel
- 11 Depression left by former mobile homes
- 12 Construction stormwater pond
- 13 Stream channel and associated wetlands
- 14 Possible wetland
- 15 Stock pond
- 16 Agricultural drainage ditch
- 17 Wastewater treatment plant discharge pipe
- 18 Main Old Town storm sewer outfall
- 19 Underground gas transmission lines
- 20 USGS navigational channel
- 21 Sanitary sewer lines
- 22 Domestic water mains

LEGEND

- == Overhead power line
- Underground water line
- Underground storm sewer
- Underground sanitary sewer
- Underground gas line
- Stream
- Water (in addition to Willamette River) and potential wetland observable from streets and public land
- Section 4(f) resource
- Section 6(f) resource
- Historic resource
- Exclusive Farm Use zone



Key ● = Public Open House ■ = Task Force Meeting ▼ = City Council Meeting ◆ = Project Milestone