

CLACKAMAS COUNTY BOARD OF COUNTY COMMISSIONERS
Sitting/Acting as (if applicable)
Policy Session Worksheet

Presentation Date: 9/14/2021 **Approx. Start Time:** 1:30 PM **Approx. Length:** 30 minutes

Presentation Title: Overview of Clackamas County's Emergency Medical Services Program

Department: H3S

Presenters: Philip Mason-Joyner, Public Health Director; Bill Conway, EMS Coordinator

Other Invitees: N/A

WHAT ACTION ARE YOU REQUESTING FROM THE BOARD?

This is an informational session to brief the Board of County Commissioners on the Emergency Medical Services (EMS) system in Clackamas County. Staff requests the opportunity to have an additional policy session scheduled later this calendar year to discuss finalizing a performance based contract with American Medical Response, NW.

EXECUTIVE SUMMARY: State law requires Clackamas County, acting as the Local Public Health Authority, to assure Emergency Medical Services (EMS) for the jurisdiction. EMS are medical 911 related emergency services that provide care to patients and transport to local hospitals. The purpose of this policy session is to provide a brief overview of the EMS system in Clackamas County in preparation for a Board discussion on the County's Ambulance Services Contract at a later date.

FINANCIAL IMPLICATIONS (current year and ongoing):

Is this item in your current budget? YES NO

What is the cost? Approximately \$6 million annually

What is the funding source? Franchise Fee

STRATEGIC PLAN ALIGNMENT:

- How does this item align with your Department's Strategic Business Plan goals?
 - Emergency Medical Services is an important Public Health program and aligns with Public Health Strategic Business Plan.

- How does this item align with the County's Performance Clackamas goals?
 - Ensure safe, healthy & secure communities.

LEGAL/POLICY REQUIREMENTS: None

PUBLIC/GOVERNMENTAL PARTICIPATION: N/A

OPTIONS: N/A

RECOMMENDATION: N/A

ATTACHMENTS: PowerPoint presentation

SUBMITTED BY:

Division Director/Head Approval _____

Department Director/Head Approval _____

County Administrator Approval _____

For information on this issue or copies of attachments, please contact Bill Conway @ 503-313-9170 or
wconway@clackams.us

Overview of Clackamas County Emergency Medical Services (EMS)

H3S / Clackamas County Public Health Division



Public Health
Prevent. Promote. Protect.

Role of EMS in Clackamas County



- State law tasks Clackamas County, through the Local Public Health Authority, with responsibility to provide EMS transport coverage to residents.
- The Ambulance Service Plan establishes this coverage with 3 Ambulance Service Areas:
 - Clackamas ASA
 - Canby ASA
 - Molalla ASA

Ambulance Service Area Plan

- First Clackamas County ASA established in 1991, current version from 2012
- The plan is intended to ensure the highest quality care & timely response.
- Establishes requirements for EMS and 911 services operating in the County, and penalties for non-compliance
- Sets educational, training & quality improvement standards

CLACKAMAS COUNTY CODE

TITLE 10
FRANCHISES

CHAPTER 10.01 Table of Contents

10.01 AMBULANCE SERVICE PLAN.....	1
10.01.010 Certification by Board of County Commissioners.....	1
10.01.020 Overview of County.....	1
10.01.030 Definitions.....	2
10.01.040 Boundaries.....	5
10.01.050 System Elements.....	9
10.01.060 Coordination.....	19
10.01.070 Provider Selection.....	23
10.01.080 County Ordinances and Rules.....	26

CHAPTER 10.01
10.01 AMBULANCE SERVICE PLAN

10.01.010 Certification by Board of County Commissioners

Clackamas County Code Chapter 10.01 is the Ambulance Service Plan for the County. The Board of County Commissioners hereby certifies that:

A. The County has included in this plan each of the subjects or items set forth in Oregon Administrative Rule 333-260-0020 and has addressed and considered each of those subjects or items in the adoption process.

B. In the Board's judgment, the ambulance service areas established in the plan will provide for the efficient and effective provision of ambulance services; and

C. To the extent they are applicable, Clackamas County has complied with ORS 682.062 and 682.063 and with existing local ordinances and rules.

[Codified by Ord. 05-2000, 7/13/00]

10.01.020 Overview of County

A. Clackamas County has a population of approximately 378,480 as of April 1, 2010, and an area of 1,879 square miles. Provision of emergency medical services presents a challenge due to the widely varying demographic and geographic areas within the County. The urbanized areas of the County within the Portland metropolitan urban growth boundary are densely populated, while rural areas are much less densely populated. More than one-third of the County

Exhibit A - Page 1

Clackamas County's EMS Response Model – Dual Advanced Life Support (ALS)

- A dual ALS system provides emergency care to residents utilizing both AMR and Fire medics on the majority of calls.
- It provides broad out-of-hospital medical care AND broad firefighting coverage.
- Treatment and transport provided through the combined effects of AMR and Fire assets.
- Provides enough crew members to manage complex emergencies (e.g. cardiac arrest requires many people).



EMS Funding

- Patient Fees - \$1,399.13 per transport
- *Franchise Fee – \$130,954 (quarterly)
 - Provides funding for administrative costs, EMS Coordinator, and EMS Medical Directors
- *Cost Savings - \$386,000 (annually)
 - Fire Agency Payments – 60%
 - Compassion Care – 20%
 - System Enhancement – 20%

*Restricted funds – written in contract that funds must be used to administer the Clackamas County EMS Program

Response Zones & Requirements

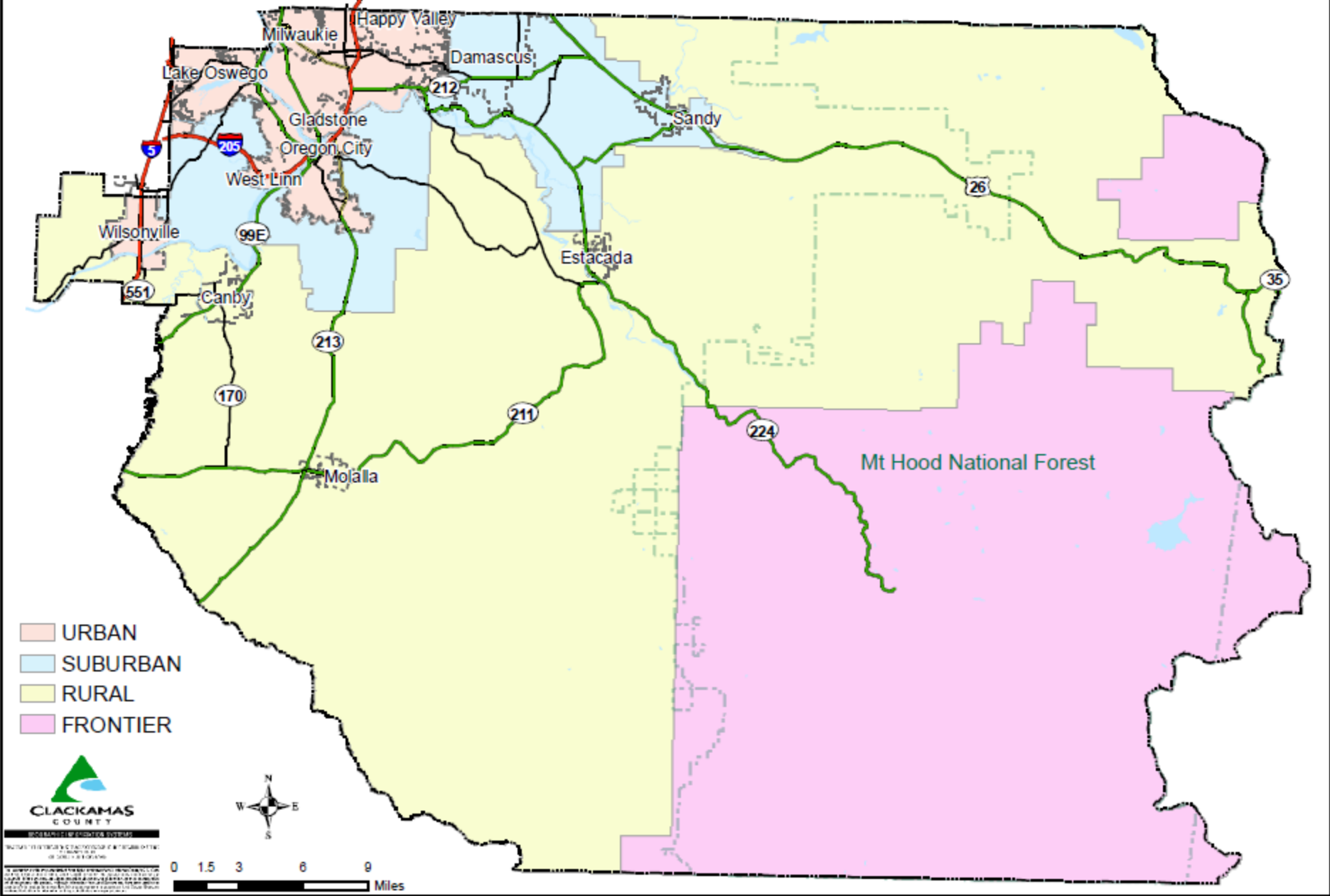


The Ambulance Service Plan 2012 sets out the following response zones, with minimum transit times for EMS in 90% of calls (with Fire supporting AMR to achieve this) -

Urban	8mins
Suburban	12mins
Rural	25mins
Frontier	120mins



CLACKAMAS COUNTY RESPONSE TIME ZONES



Ambulance Service Contract

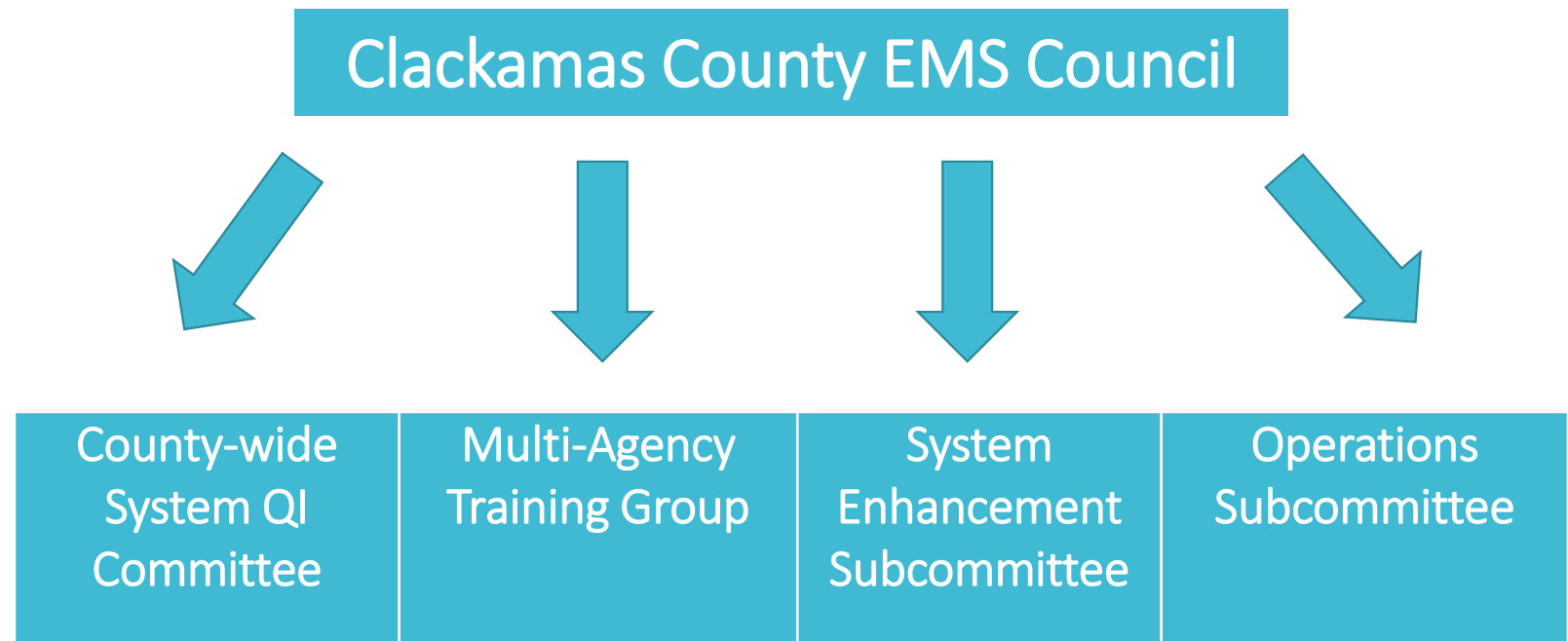


- Current version adopted in May 1, 2014
- Provides exclusive EMS service provision to American Medical Response in the Clackamas ASA
- Contract expires on May 1st, 2024
- The BCC approved a “good faith” agreement with AMR to develop a new performance-based contract by December 31, 2021

Role of Clackamas County EMS Council



- Advises the Board of County Commissioners and H3S / Public Health Division on matters related to EMS in Clackamas County
- Oversees the Clackamas County EMS Strategic Plan
- Establishes, monitors, and implements recommendations from subcommittees



EMS System Strategic Plan



Ambulance Service Area Plan Review
PSAP Accreditation/MPDS Utilization
Equipment Standardization
Single Resource Response
Community Paramedic Program and Response
Education and Training
Compliance Transparency and Improvement
Public Education
Quality Improvement
Water Rescue/Reach and Treat Team
Integrations

Next steps

- Additional Policy Session with BCC to have discussion on finalizing performance-based contract with AMR