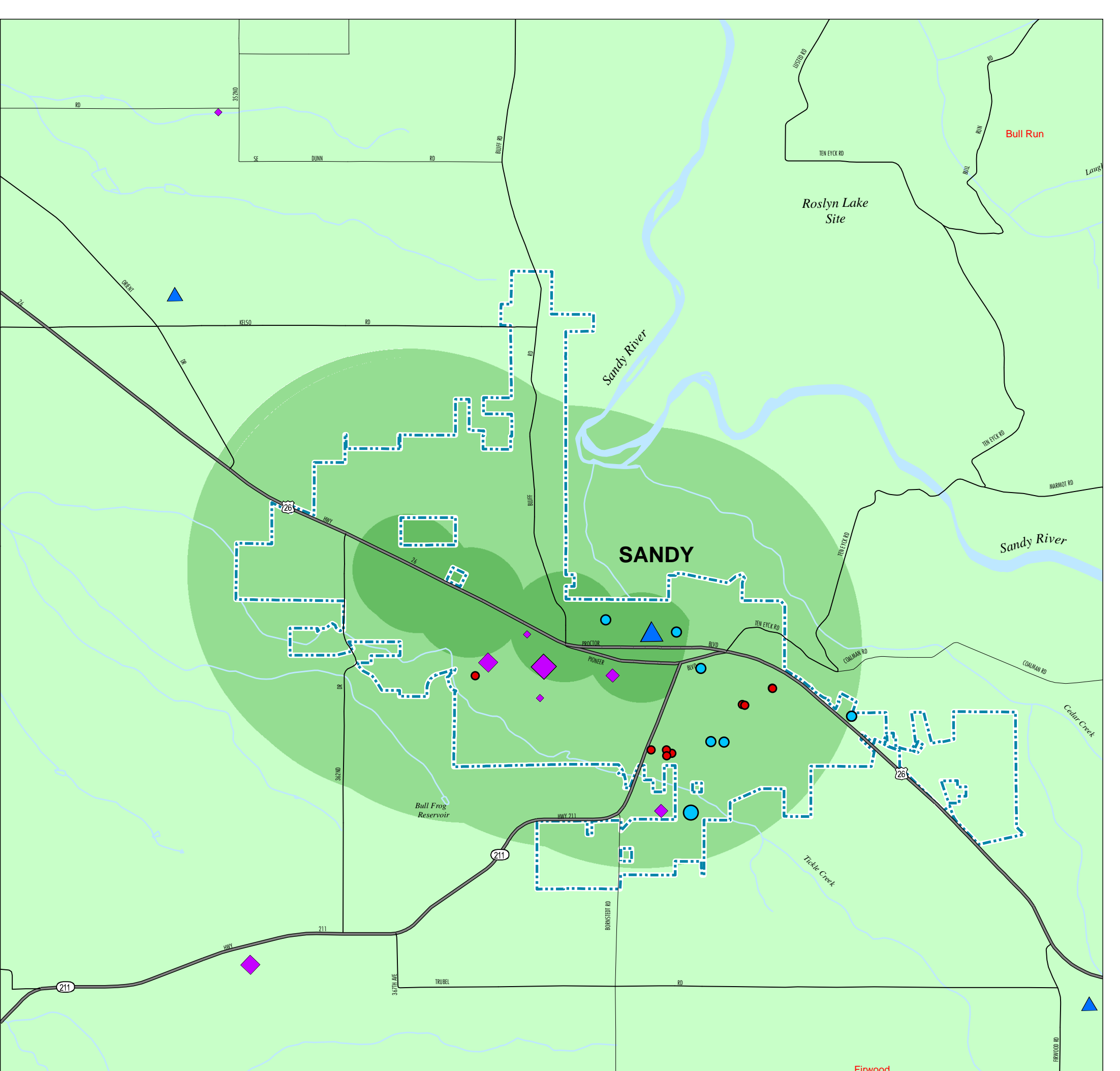
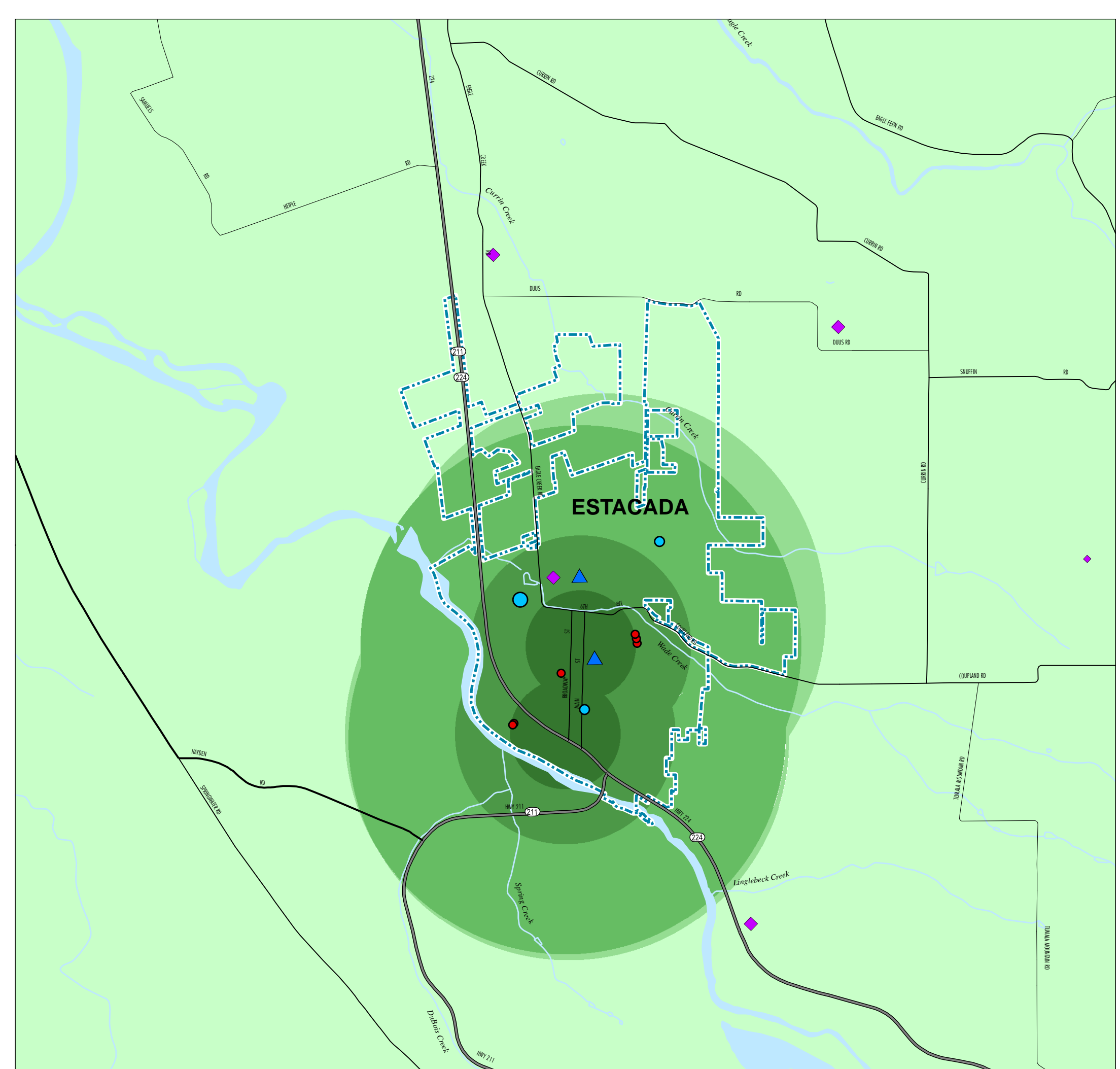
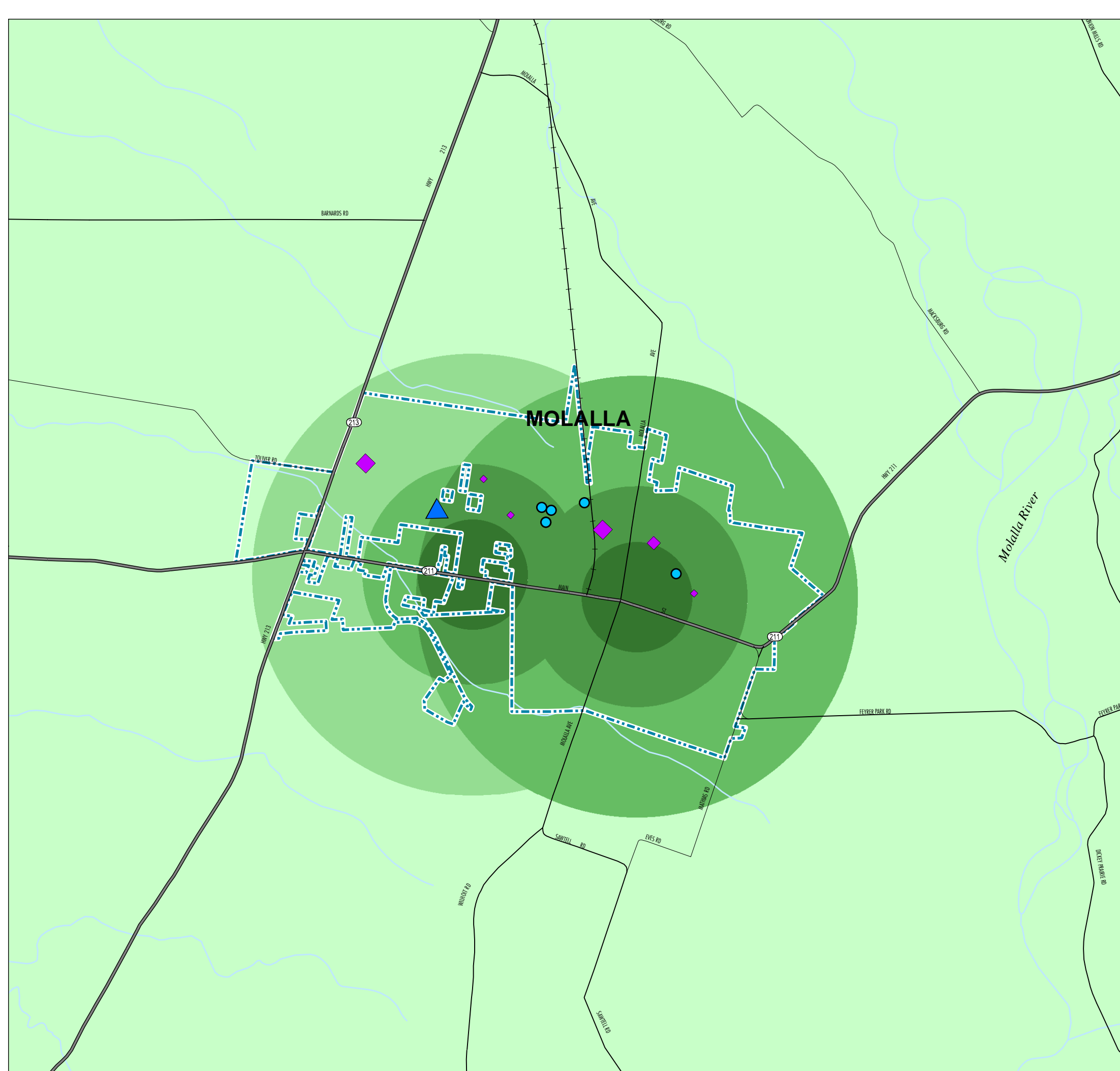
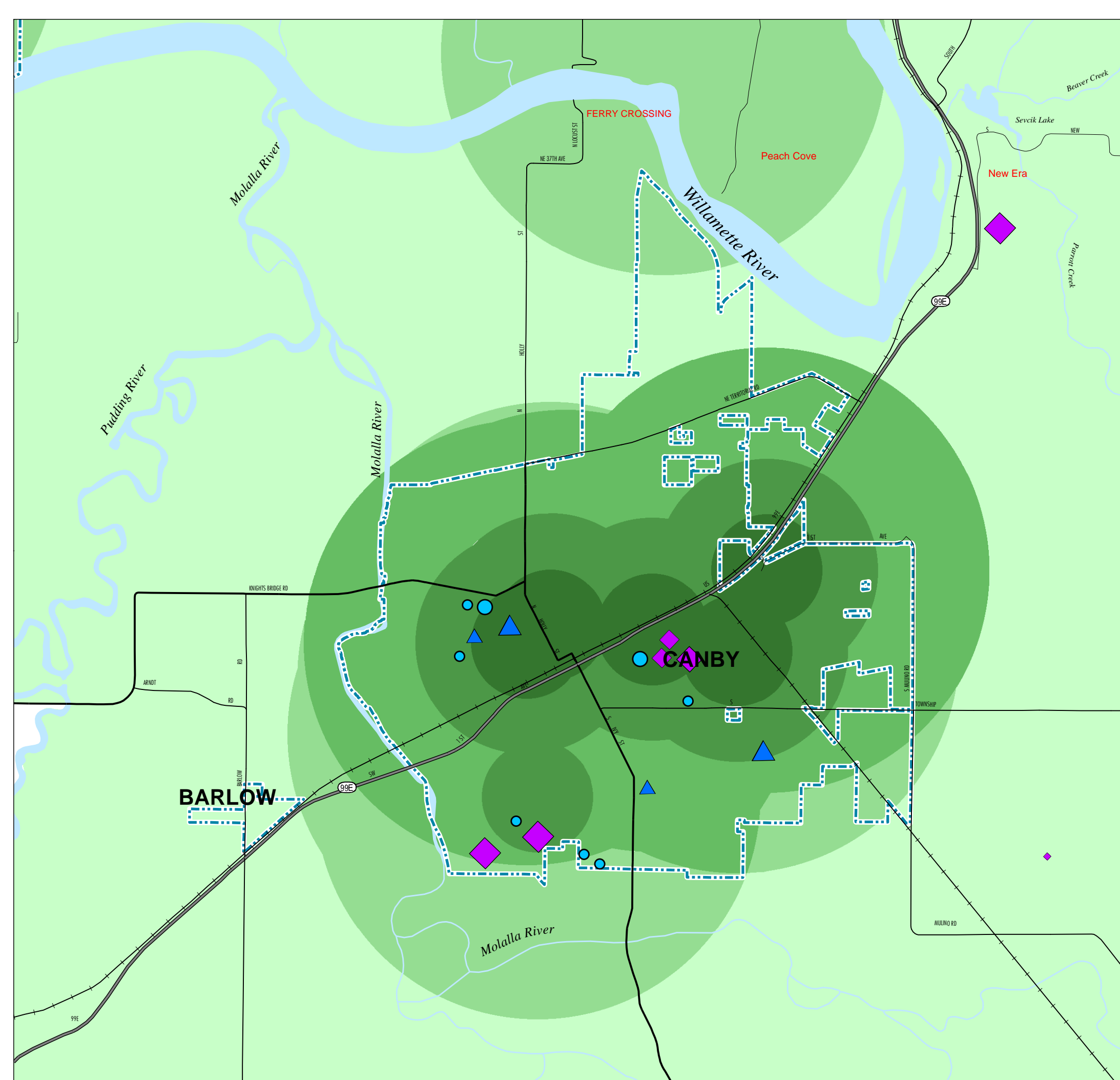
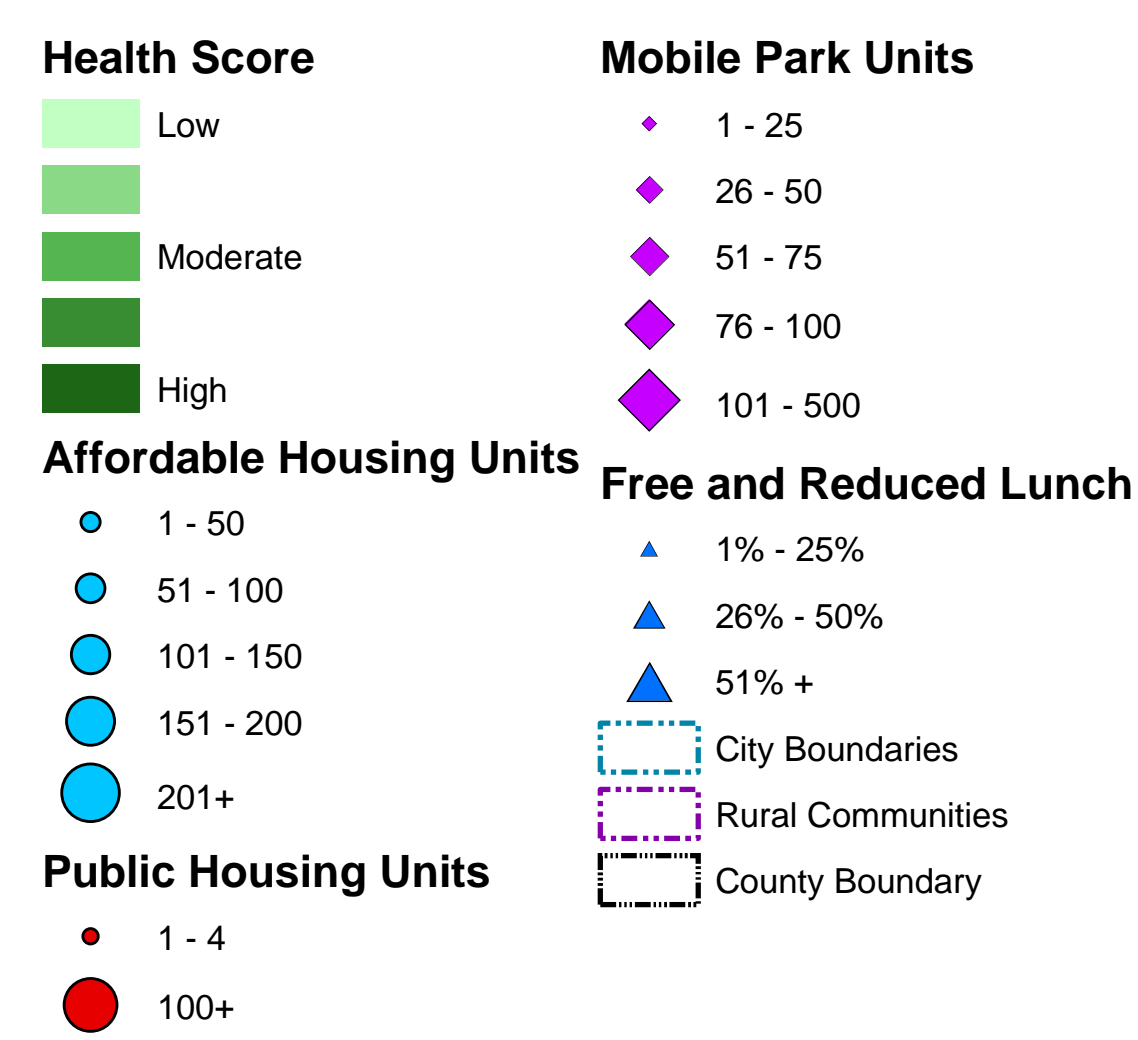
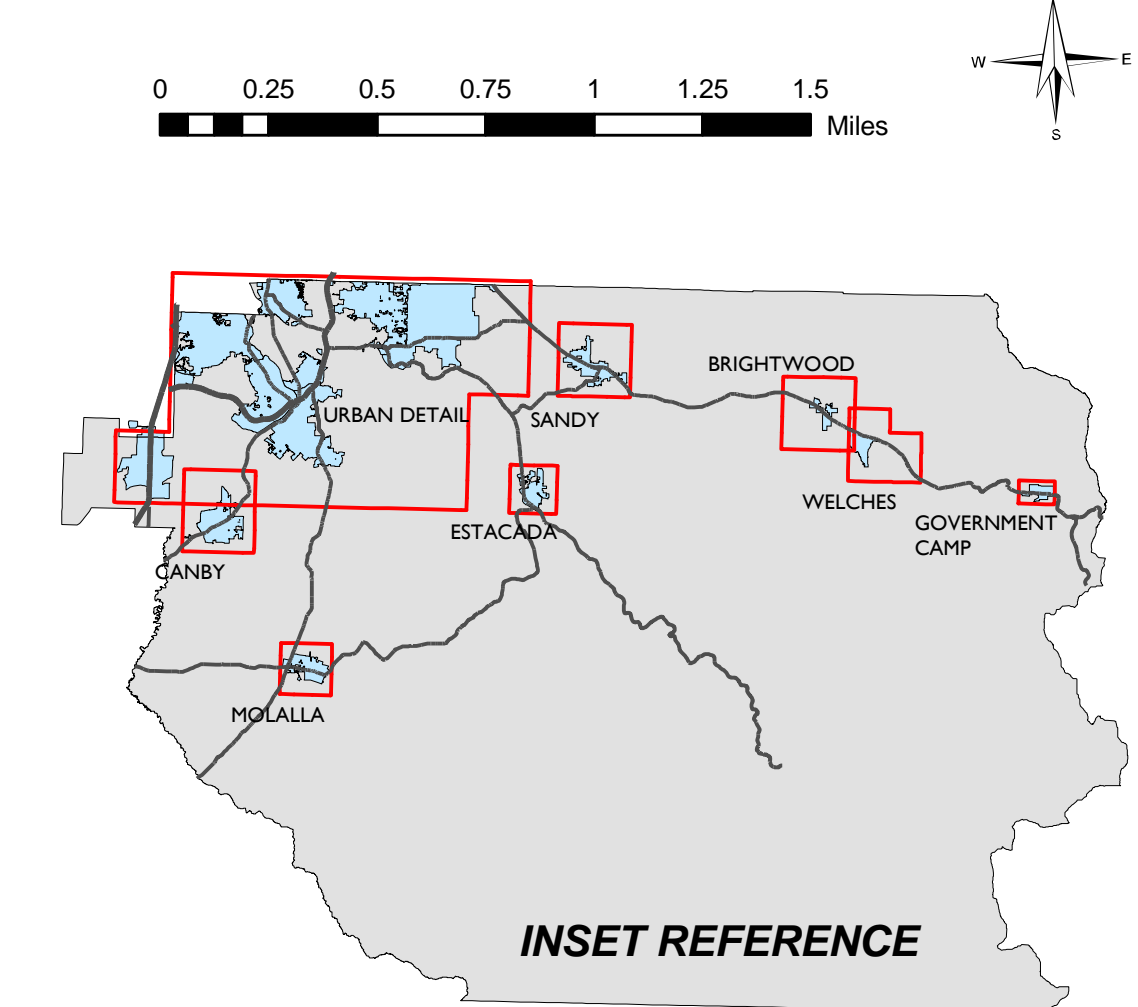
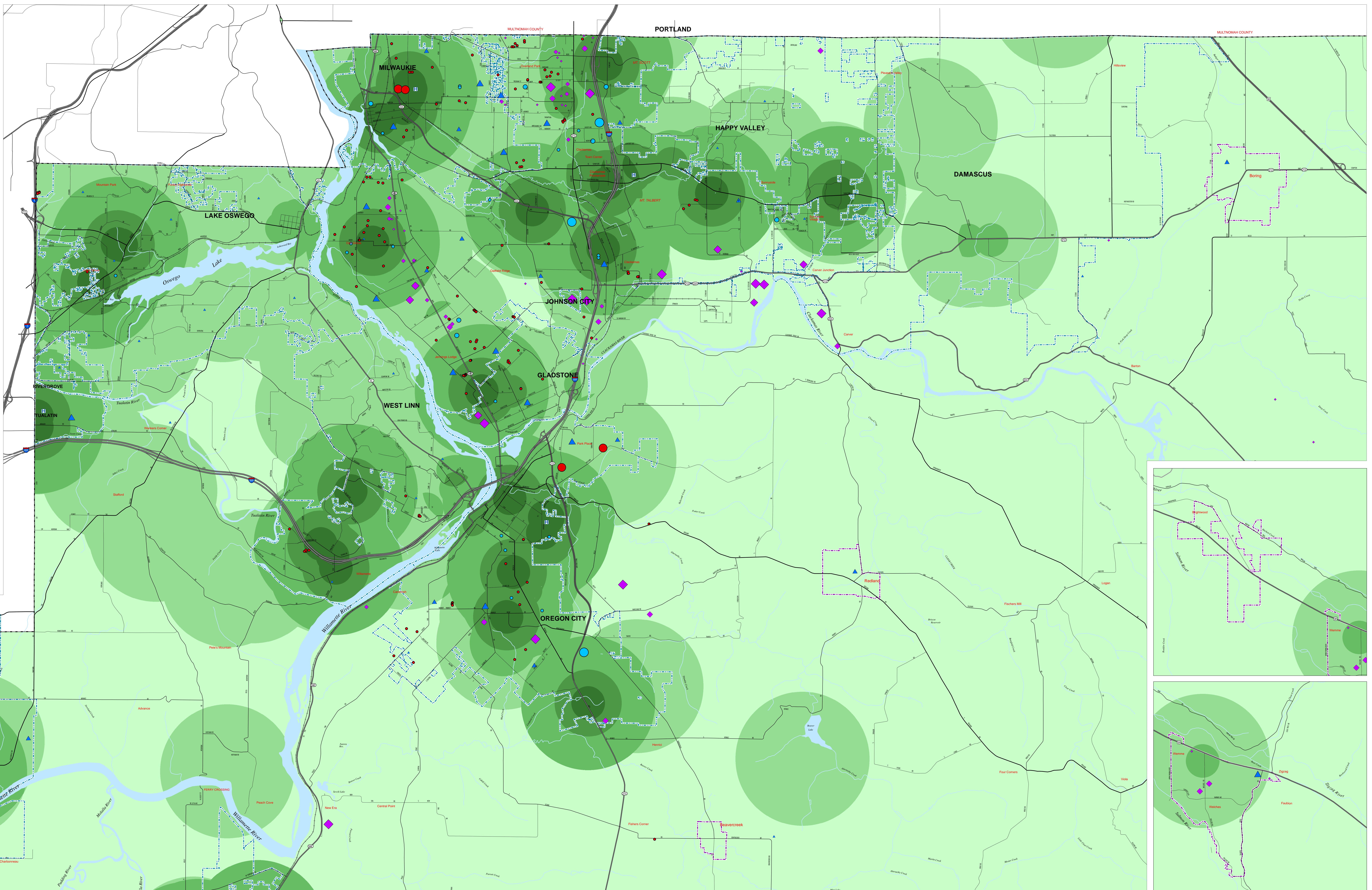


HEALTH OPPORTUNITY MAP CLACKAMAS COUNTY



Clackamas County Opportunity Scores – Methodology

Category	Weight	Indicator
Education	1/5	33% Average ODE Report Card Score (Elementary, Middle, High)
	1/5	33% Proximity to Elementary & Secondary Schools
	1/5	33% Proximity to Adult Education Resources
Economic	60%	Density (by number & size of firms) of higher-wage industries in 1-mile radius
	33%	Density (by number & size of firms) of lower-wage industries in 1-mile radius
Health Care	1/5	100% Proximity to Health Care Providers
	1/5	100% Proximity to Transit
Transportation	1/5	100% Proximity to Food sources (except convenience stores)
	1/5	33% Proximity to other Community Resources
Community	1/5	33% Proximity to Parks
	1/5	33% Proximity to food sources (except convenience stores)



CLACKAMAS COUNTY

DEPARTMENT OF INFORMATION SERVICES/GEOSPATIAL INFORMATION SYSTEMS

1211 LIBRARY COURT, OREGON CITY, OREGON 97033

MAP CREATED OCTOBER 2011

