

CLACKAMAS COUNTY BOARD OF COUNTY COMMISSIONERS

Study Session Worksheet

Presentation Date: December 19, 2017 **Approx. Start Time:** 10:30 am **Approx.**

Length: One Hour.

Presentation Title: Equity Pilot Areas – Investment options

Department: County Administration/H3S

Presenters: Dan Chandler

Other Invitees: Jill Smith, Dawn Emerick, Brenda Durbin

WHAT ACTION ARE YOU REQUESTING FROM THE BOARD?

Pursuant to Board direction in the 2017 Performance Clackamas Update, we are asking the commission to provide direction on selecting equity pilot areas where the County, acting with its partners, will implement a coordinated strategy to reduce poverty and food insecurity.

EXECUTIVE SUMMARY:

Board Goals

In July, 2017 the Board of Commissioners approved a new strategic plan. The Board of Commissioners adopted a set of milestones, community indicators and goals across 5 Areas of Strategic Focus:

- **Build public trust through good government.**
- **Grow a vibrant economy.**
- **Build a strong infrastructure.**
- **Ensure safe, healthy and secure communities.**
- **Honor, utilize, promote and invest in our natural resources.**

Among those goals were the following:

- By September 2017, Clackamas County will identify equity pilot areas where the county will focus efforts to reduce poverty and food insecurity.
- By February of 2018, there will be a coordinated and focused strategy to reduce the poverty rate in each equity pilot area by 10%.
- By February 2018, there will be a focused and coordinated strategy to reduce food insecurity by 10% in each equity pilot area.

Previous Policy Session

In order to assist the commission in identifying equity pilot area, staff did some analysis and had maps prepared showing census tracts in the county that contained the highest combined concentrations of overall poverty, childhood poverty and SNAP benefits. The maps were prepared under contract with the county Public Health Department

The Board of Commissioners reviewed the matter and directed staff to conduct outreach to city officials, and come back with a recommendation on which areas the commission might select.

City Outreach

Because there are potential Equity Pilot Areas in each city, staff have met with officials from the cities of Milwaukie, Canby and Estacada to discuss their level of interest in working with the county. All three cities were strongly interested in participating and each has already shared some local insights.

The significant advantage in working with cities is that the county can combine its expertise and staff resources with expertise and strong local knowledge of city staff and elected officials. Staff recommends designating the potential areas within each city as equity pilot areas.

Next Steps

After the BCC selects the equity pilot areas, staff recommends conducting an outreach effort for each area, involving the community, county departments, city staff and other partners in the government and non-government sectors to begin to develop a plan for each area.

FINANCIAL IMPLICATIONS (current year and ongoing):

Is this item in your current budget? YES X NO

STRATEGIC PLAN ALIGNMENT

- How does this item align with the County's Performance Clackamas goals?

This item is a direct implementation step of the three goals mentioned above.

LEGAL/POLICY REQUIREMENTS:

STAFF RECOMMENDATION:

Poverty and food insecurity are complex issues, with as many variables as there are people experiencing them. Staff knows that every area will require different strategies.

Staff recommends as follows:

1. Designate the following areas as Equity Pilot Areas:
 - U-1 in the City of Milwaukie

- U-16 in the City of Estacada
 - U-14 and U-15 in the City of Canby as a single area.
 - The areas R-1 and R-2 in the rural area outside of Sandy and into Hoodland as a single combined area.
2. The boundaries of each pilot area should be modified based on local conditions and knowledge.
 3. Staff recommends adding the rural areas outside of the City of Sandy (R-1 and R-2) as a single equity pilot area.
 4. Staff suggest that, if interested, a commissioner be designated as a liaison for each equity pilot area.

ATTACHMENTS:

- a. Power Point with maps.
- b. Data tables of selected areas.

SUBMITTED BY:

Division Director/Head Approval _____
Department Director/Head Approval _____
County Administrator Approval _____

For information on this issue or copies of attachments, please contact Dan Chandler @ 503-742-5394

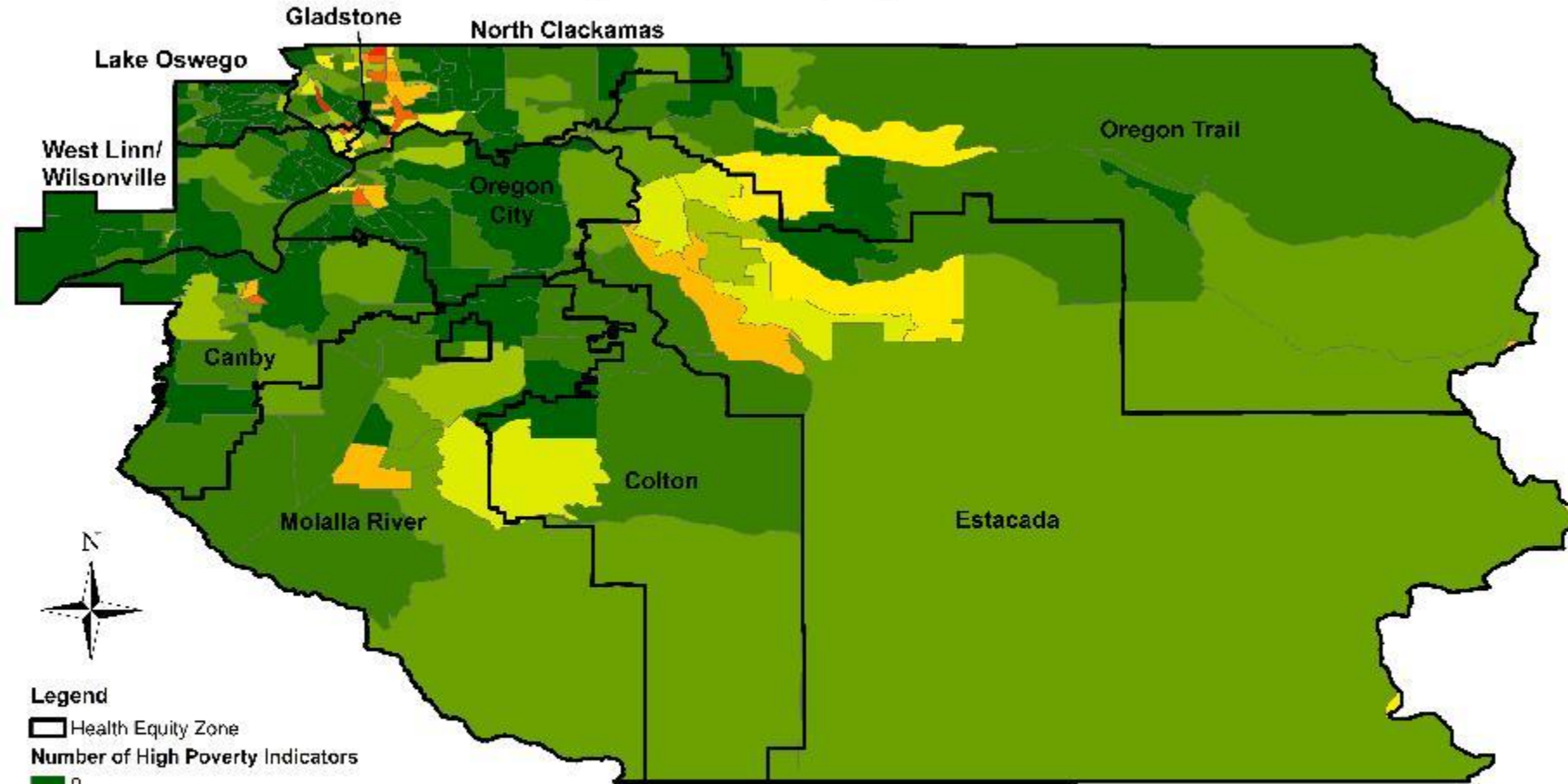
Equity Pilot Areas: Possibilities for Investment



Purpose today

- By September 2017, Clackamas County will identify equity pilot areas where the county will focus efforts to reduce poverty and food insecurity.
- By February of 2018, there will be a coordinated and focused strategy to reduce the poverty rate in each equity pilot area by 10%.²
- By February 2018, there will be a focused and coordinated strategy to reduce food insecurity by 10% in each equity pilot area.

Number of High Poverty Indicators per Census Block Group by Health Equity Zone

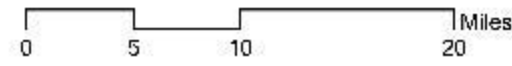
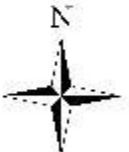


Legend

Health Equity Zone

Number of High Poverty Indicators

- 0
- 1
- 2
- 3
- 4
- 5
- 6
- 7
- 8
- 9



Map 1:
Broad
View of
9 Poverty
Indicators

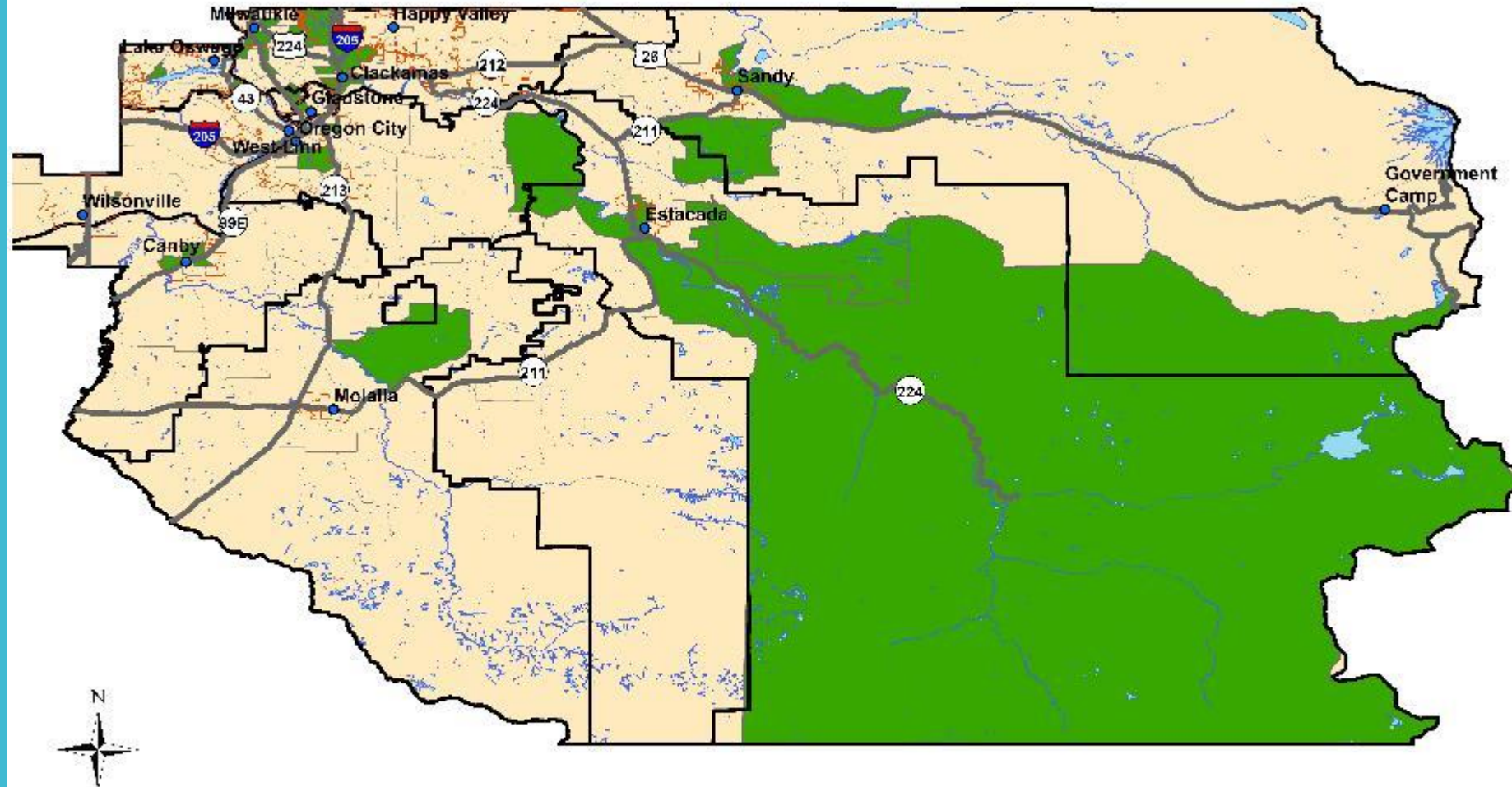
Oregon State University
College of Public Health
and Human Sciences

Health, Housing
& Human Services
CLACKAMAS COUNTY

Public Health
Prevent. Promot. Protect.

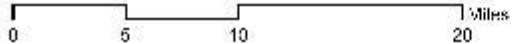
Clackamas County Public Health Department
Data Source: ACS 5-year estimates, 2011-2015 and
Clackamas County Public Health Department
Produced by: OSU Social Health Lab, 5/2017

High Population in Poverty by Health Equity Zone



Legend

- Major Cities
- Major Highways
- City Limits
- ▭ Health Equity Zone
- Water Bodies
- High Poverty



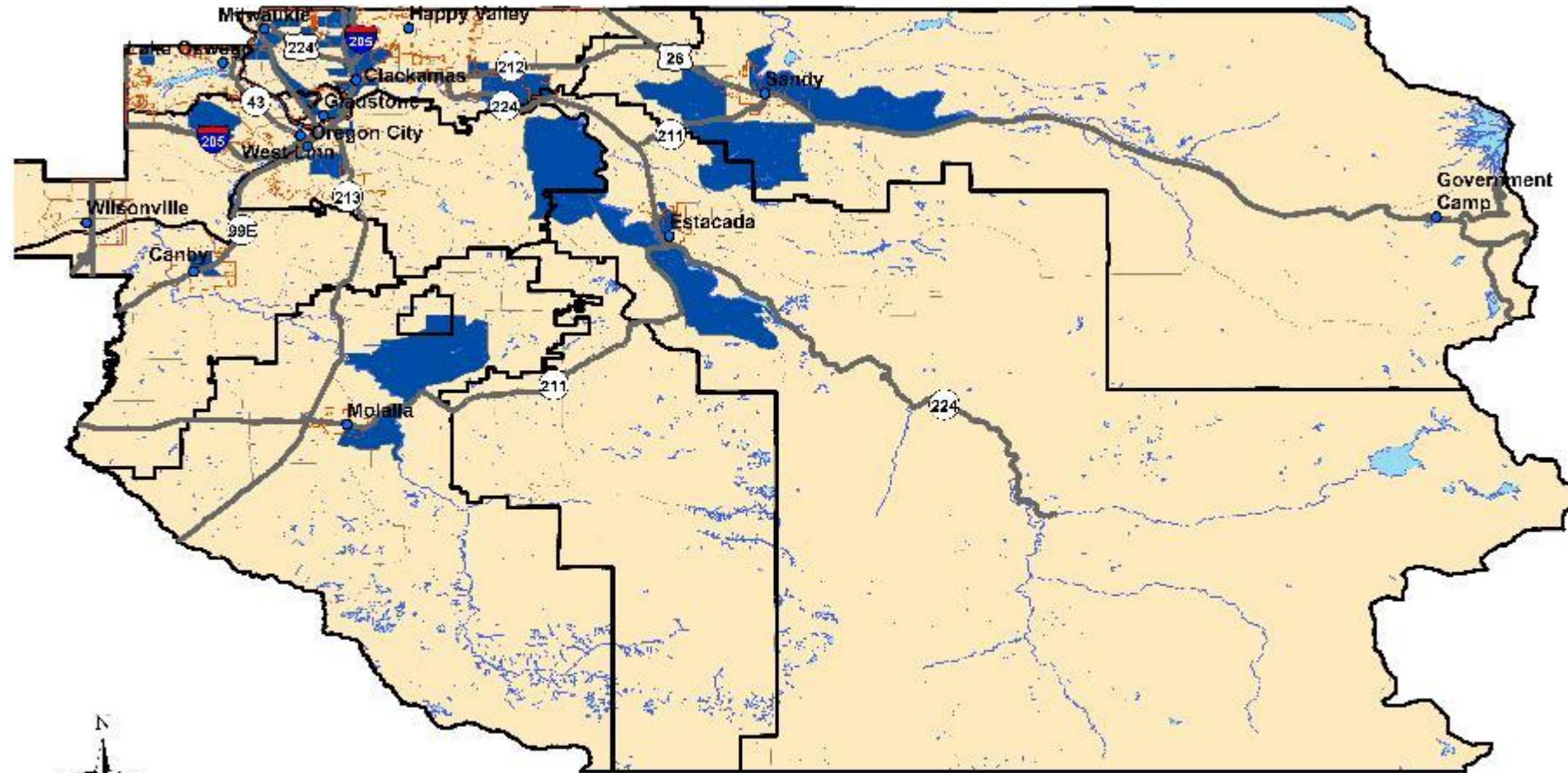
Map 2:
Overall
Poverty



Clackamas County Public Health Department
Produced by: OSU Social Health Lab: 5/2017

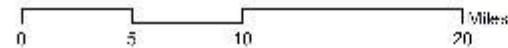
Map 3: Children in Poverty

High Percentage of Children in Poverty by Health Equity Zone



Legend

- Major Cities
- Major Highways
- City Limits
- ▭ Health Equity Zone
- Water Bodies
- High Childhood Poverty



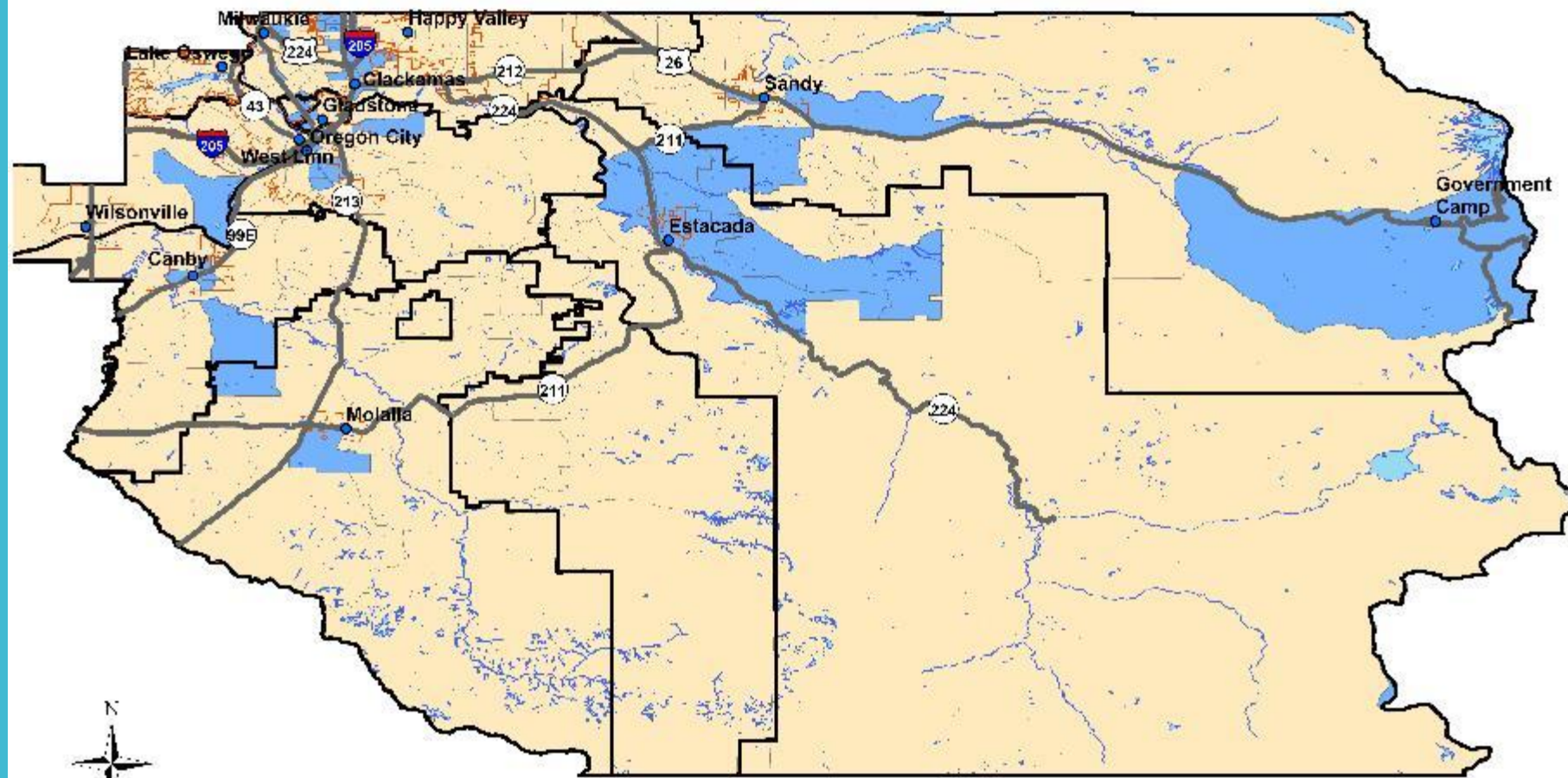
Health, Housing
& Human Services
CLACKAMAS COUNTY



Public Health
CLACKAMAS COUNTY

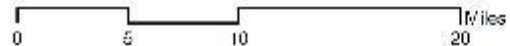
Clackamas County Public Health Department
Producer by: OSU Spatial Health Lab, 10/2017

High Number of Households Receiving SNAP benefits by Health Equity Zone



Legend

- Major Cities
- Major Highways
- | City Limits
- ▭ Health Equity Zone
- Water Bodies
- High SNAP recipients



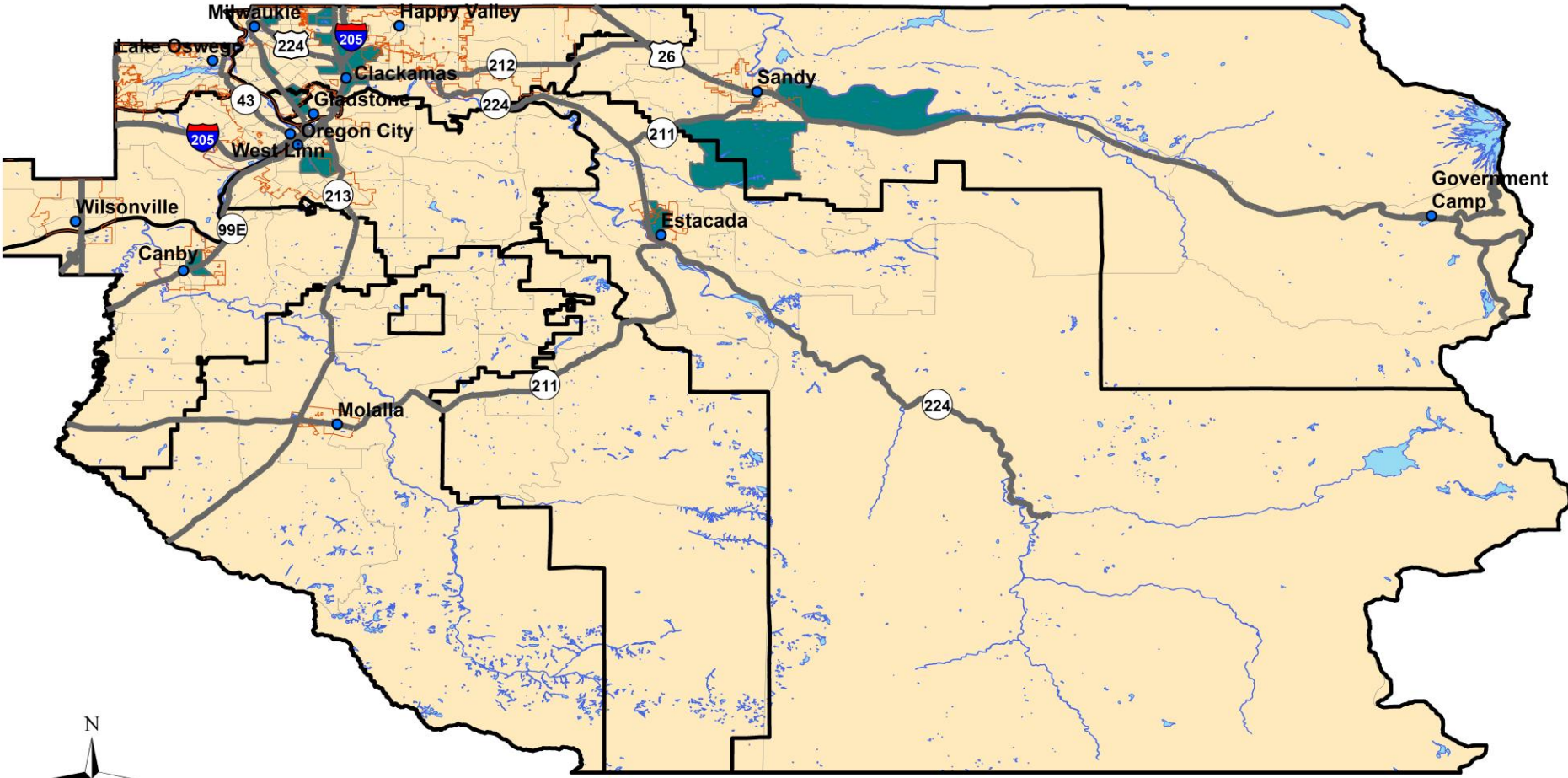
Map 4:
Food
Insecurity
(SNAP)



Clackamas County Public Health Department
 Produced by: OSU Spatial Health Lab: 5/2/17

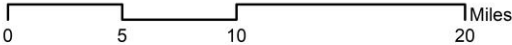
Opportunity Investment Areas by Health Equity Zone

Map 5:
Areas Where
3 Poverty
Indicators
Are Highest



- Legend**
- Major Cities
 - Major Highways
 - City Limits
 - ▭ Health Equity Zone
 - Water Bodies
 - High Poverty Intersection

The blue areas indicate where the highest number of households or population (with the % or # from the source maps of the upper quintile listed respectively) are experiencing overall poverty, childhood poverty and are also receiving SNAP benefits. Data comes from the ACS 2011-2015 5-year estimates

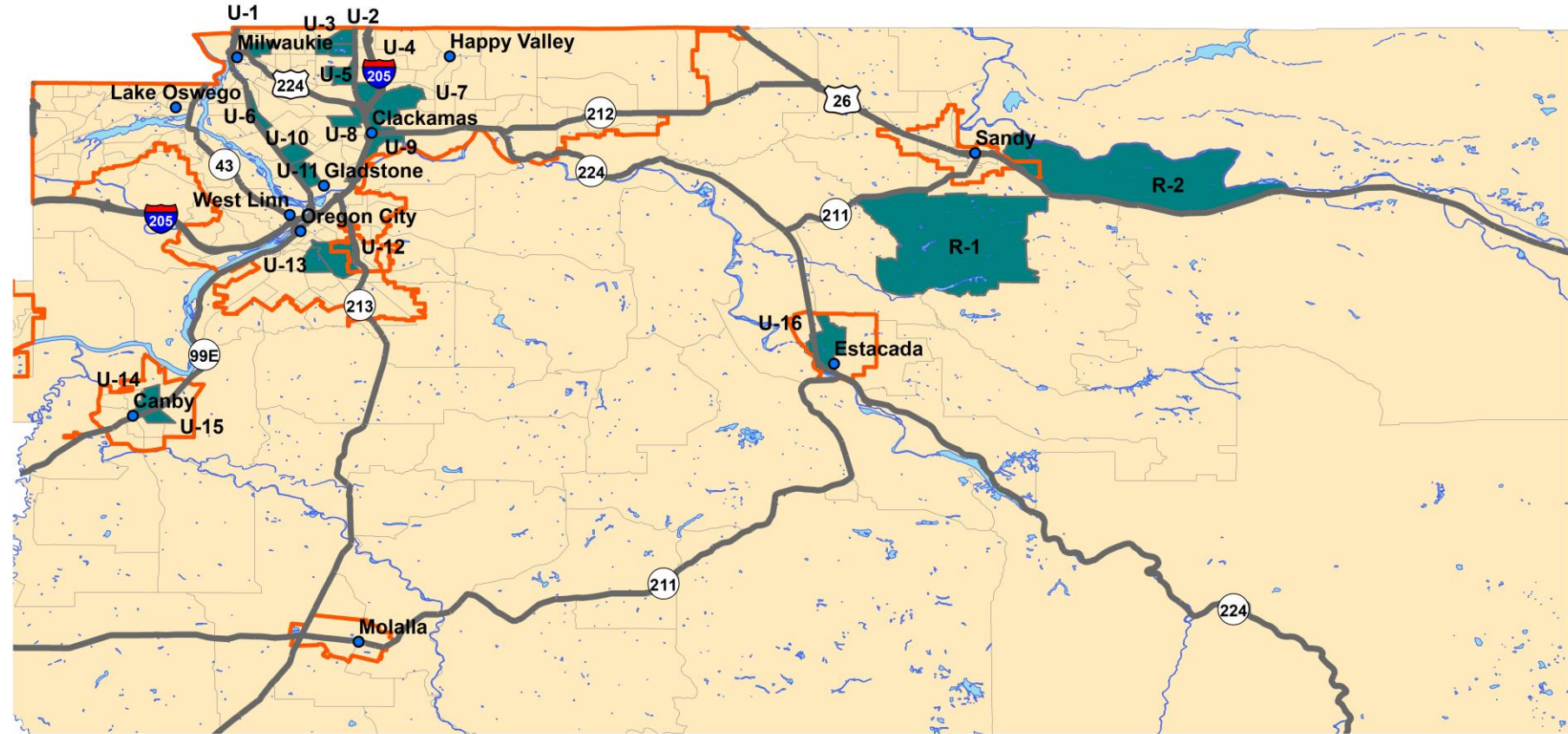


Public Health
Prevent. Promote. Protect.

Clackamas County Public Health Department
Produced by: OSU Spatial Health Lab; 5/2017

Intersection of High Poverty Indicators including Overall Poverty, High Childhood Poverty, and Number of SNAP Recipients

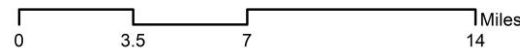
Map 6: Close Up View of Intersection Areas



Legend

- Major Cities
- Major Highways
- Urban Growth Boundary- 2015
- Water Bodies
- High Poverty Intersection

The teal areas indicate the intersection where overall poverty is in the upper 20% for the entire county, childhood poverty is in the upper 20% for the county, and upper 20% of those receiving SNAP benefits.



Public Health
Prevent. Promote. Protect.

Clackamas County Public Health Department
Data Source: ACS 5-year estimates, 2011-2015 and
Clackamas County Public Health Department
Produced by: OSU Spatial Health Lab; 9/2017

THANK YOU!

D. Daniel Chandler, J.D.
Assistant County Administrator
503-742-5394
Dchandler@co.Clackamas.or.us

Tia H. Ho, PhD, MST
Senior Policy Analyst
503-742-5369
tho@co.clackamas.or.us



Equity Areas Descriptors

These areas are census tracts. References to a City refer to a city within which the census tract lies.

Maps provided by Oregon State University through partnership with Clackamas County Public Health Division

ID	Population	Number of Households	% Non English	% in Poverty	% Child Poverty	# of Households Receiving SNAP	% Unemployed	% No HS Diploma	Life Expectancy
Rural Unincorporated									
R-1	1750	601	5.99	23.65	23.01	130	25.45	25.42	70.14
R-2	1854	633	14.38	19.63	13.06	150	13.53	28.01	74.24
Urban Cities									
U-1 (Milwaukie)	1535	770	19.74	19.37	17.78	235	4.42	27	68.69
Urban Unincorporated Areas									
U-2	1137	518	12.55	34.65	29.94	195	15.12	33.72	67.1
U-3	998	427	3.98	17.34	22.75	126	17.78	31.04	71.41
U-4	2955	1036	22.49	37.01	28.7	278	5.44	41.88	69.06
U-5	1907	746	10.45	22.26	25.16	252	17.46	25.65	72.62
U-6	1106	437	27.69	18.98	12.18	142	26.7	37.4	70.83
U-7	2672	952	22.16	18.3	13.23	261	4.78	32.76	58.95
U-8	2275	837	8.48	28.61	26.17	325	10.74	30.9	75.99
U-9	1919	837	15.65	24.86	24.11	322	14.09	35.55	67.78
U-10	2706	1004	16.13	24.84	20.39	403	12.06	34.92	71.6
U-11	2690	1057	12.58	20.79	17.56	271	7.12	38.13	71.24
U-12	2860	1035	8.89	29.56	22.04	368	10.49	29.35	79.28
U-13	2084	674	19.73	22.33	22.92	312	10.65	34.14	74.43
Rural Cities									
U-14 (Canby)	1967	688	16.86	21.91	17.77	201	12.64	29.34	70.19
U-15 (Canby)	2227	743	35.94	36.01	31.25	226	11.13	33.73	72.25
U-16 (Estacada)	1675	690	5.22	28	19.74	258	12.06	45.59	73.57

R= Rural (outside the Urban Growth Boundary)

U= Urban (inside the Urban Growth Boundary)