



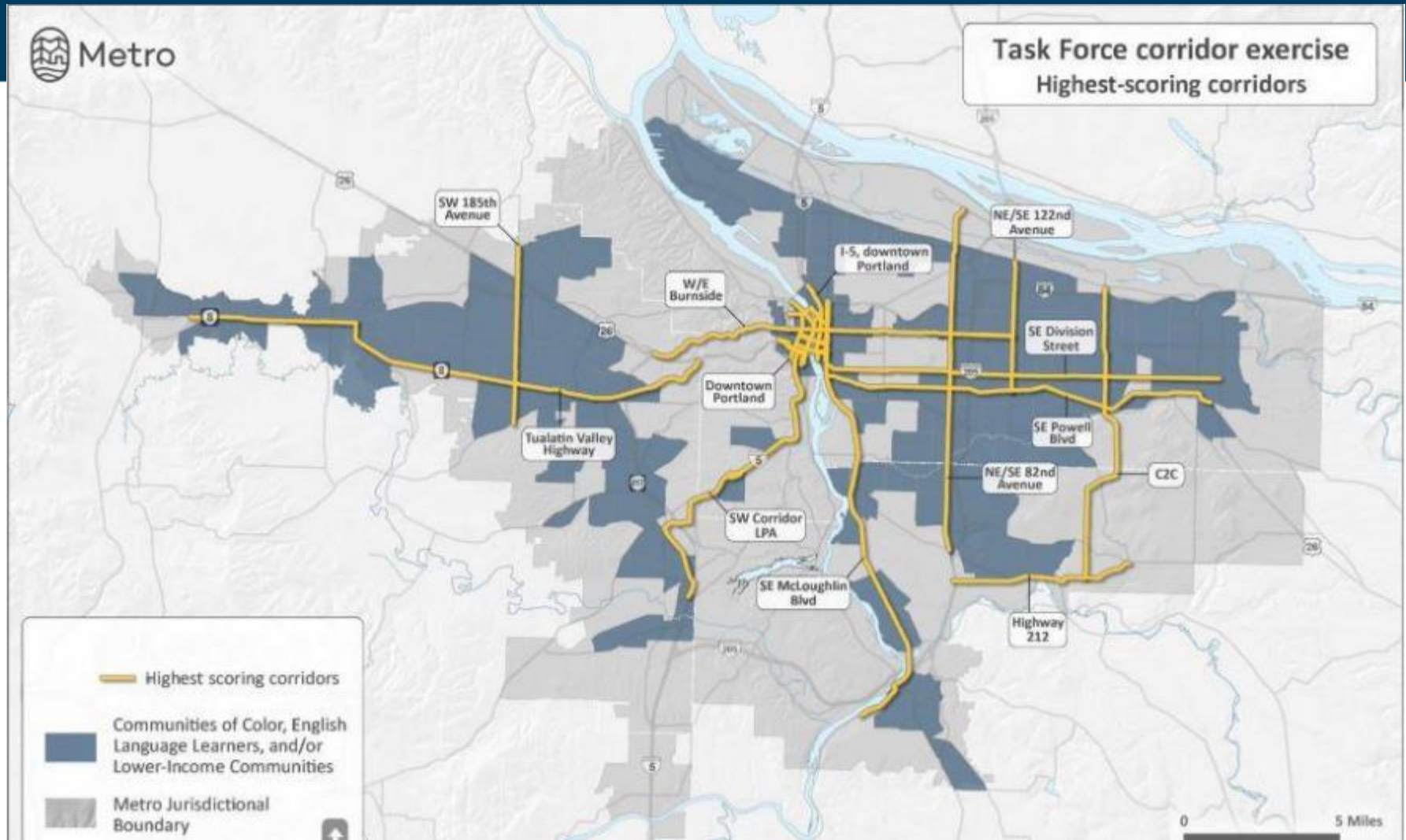
Metro



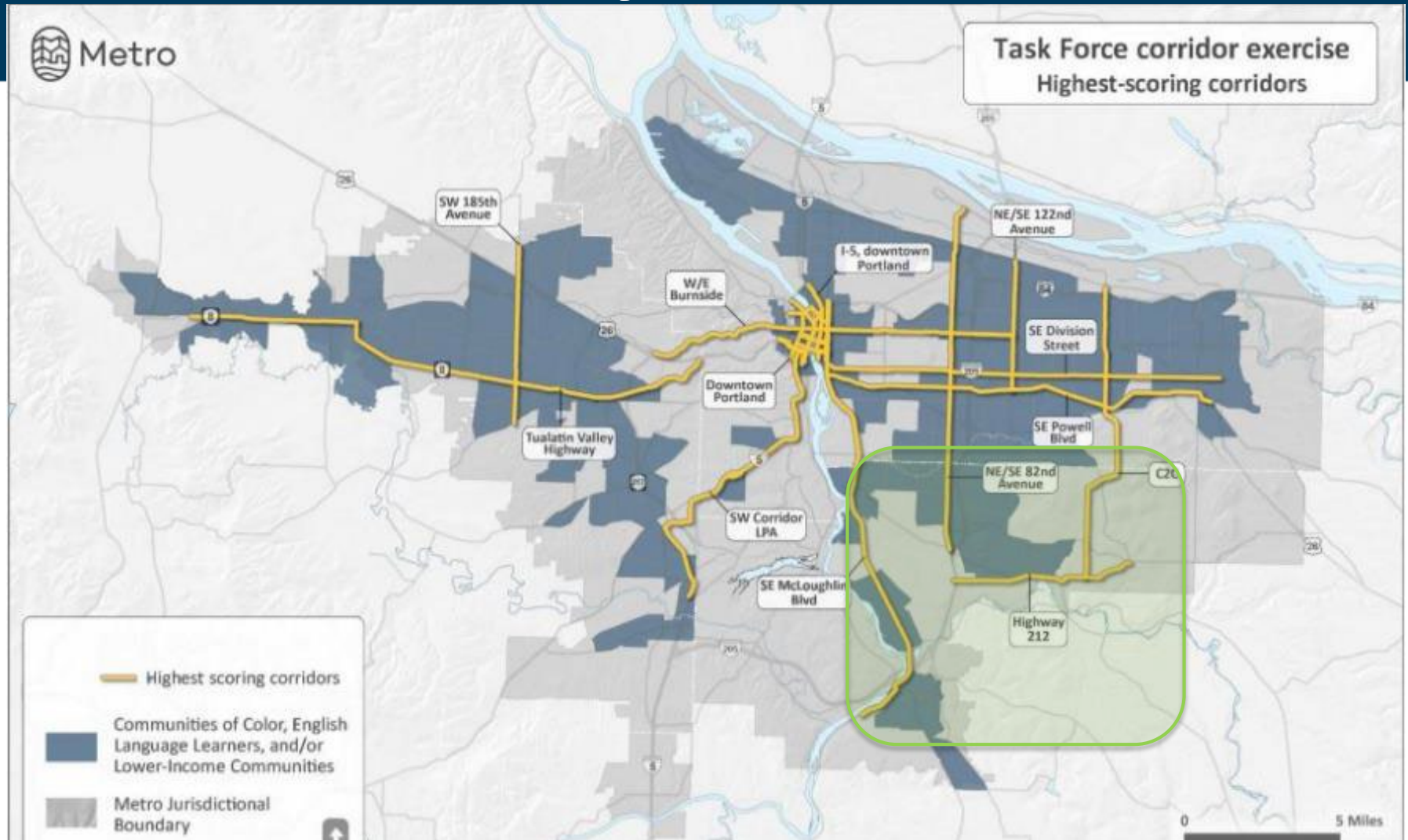
Local Investment Team (LIT) Corridor Tours: Sunrise/Highway 212

Clackamas County
August 13, 2019

Task Force Corridors of Interest



Local Investment Team – Clackamas County



Sunrise/Highway 212

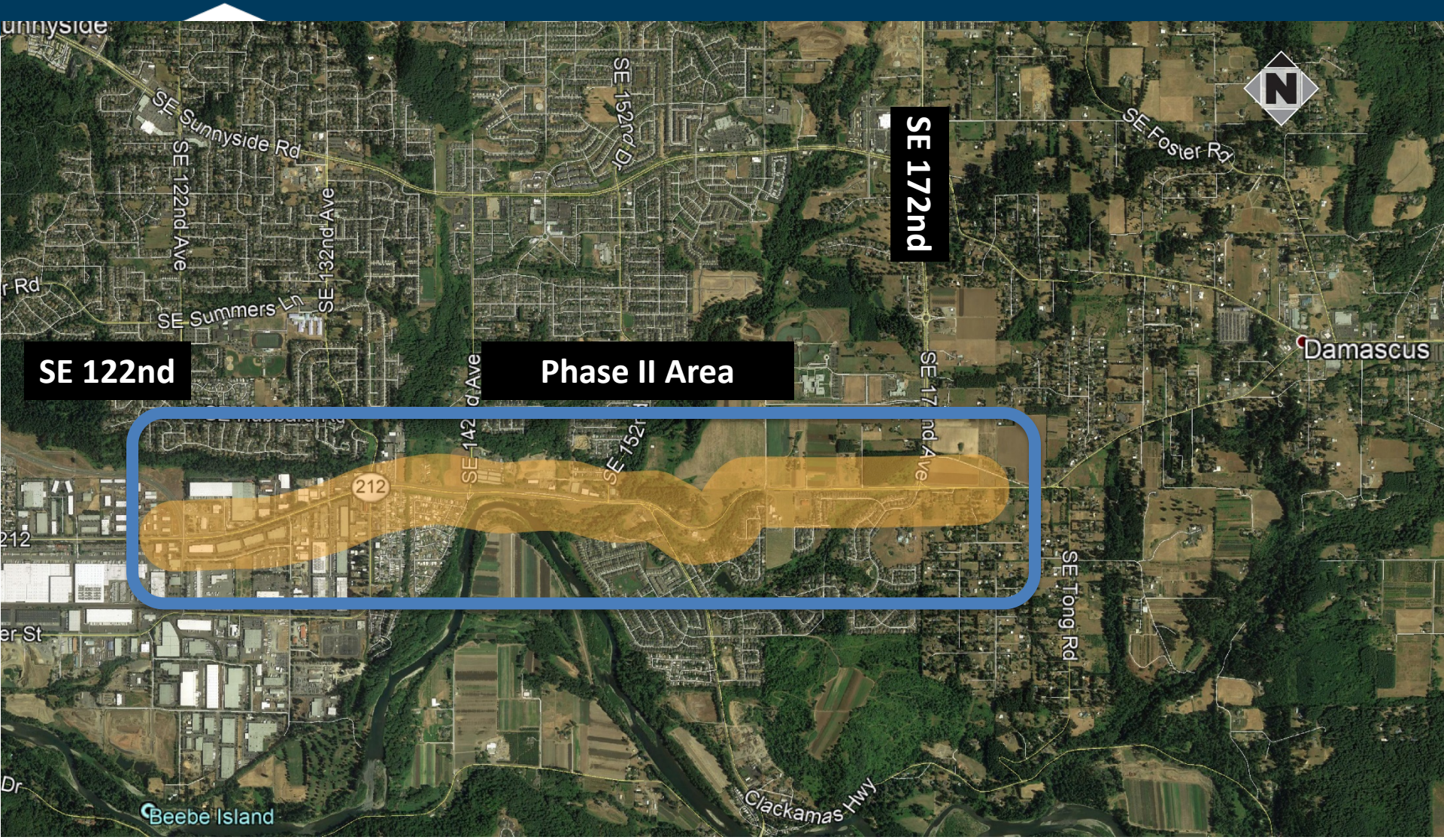
Presentation Outline

- Corridor overview
 - Regional, local
- Projects/opportunities
- Tour follow-up

Highway 212 (Clackamas at I-205 to Damascus)



Highway 212 (Phase II) (122nd Avenue to Damascus)



Regional Role:

- Intended to provide access to jobs (Rock Creek employment center) and affordable housing in Clackamas County
- Connects future residential areas to existing industrial land near I-205
- Serves freight movement from industrial areas to US 26
- Serves a concentration of lower income communities
- Potential future connection to C2C as I-205 alternate
- Provides connections to recreation areas

Local Role:

- Primary access to lower income communities
- Serves access to increasing numbers of residential development
- Primary connection from industrial areas to I-205 and US 26
- Consistent east-west bicycle facility

Presentation Outline

- Corridor overview
 - Regional, local
- Projects/opportunities
- Tour follow-up

Regional Transportation Plan Projects

- Extend Sunrise highway with a multi-use path to 172nd Avenue
- Widen highway 212 to a 5-lane boulevard from 172nd to Damascus

Current Local Opportunities

- Sunrise Phase II – 122nd Avenue to 172nd Avenue
 - Purpose: Sunrise would provide multi-modal commuter mobility, and OR212 will provide local access
 - Project elements:
 - Two- or four-lane motorist cross section
 - Separate multi-use path or separated bicycle facilities and sidewalks
 - Park & ride options
 - Pedestrian and bicycle connectivity and access to parks, services, residential areas, and commuting

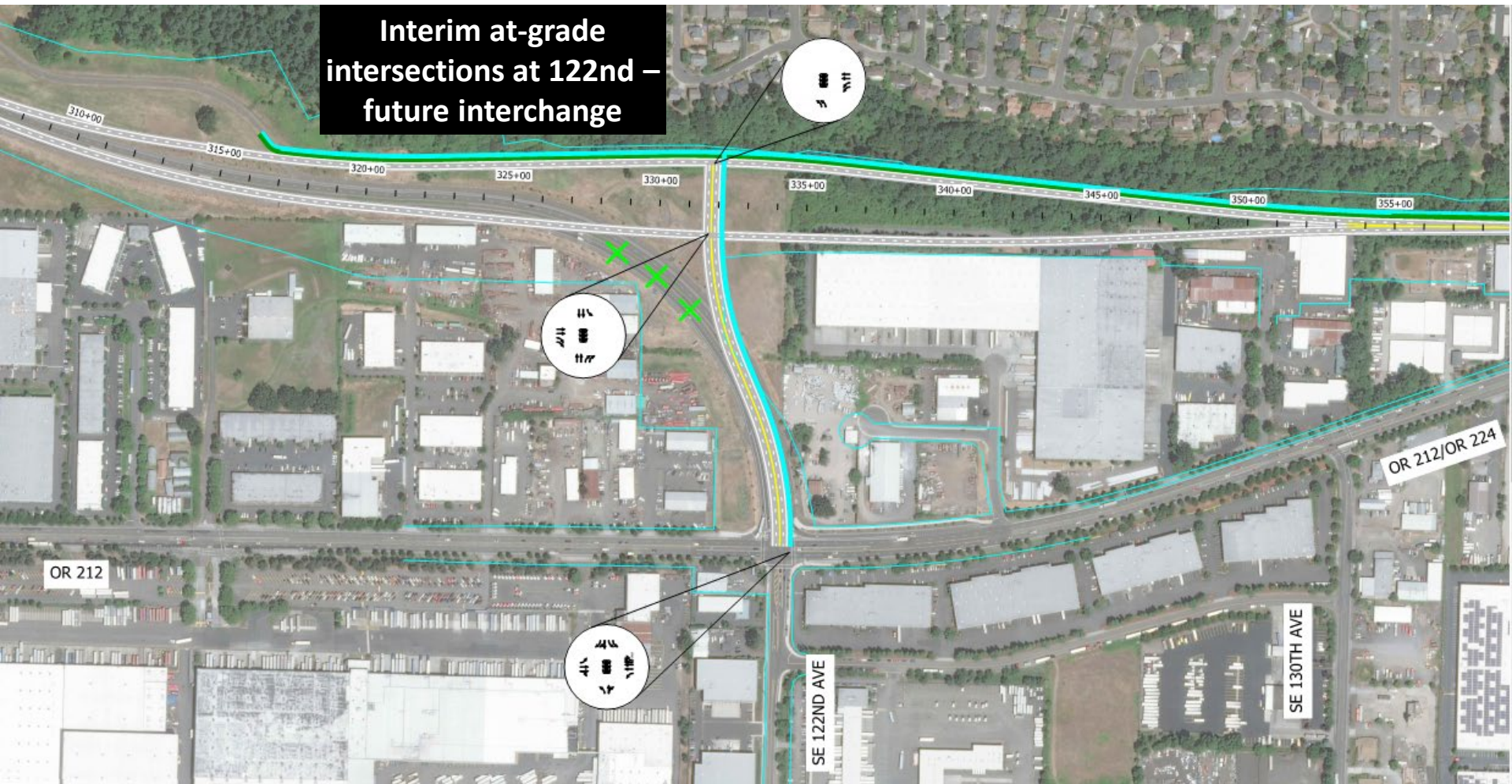
Concept Alignment: Overview

LEGEND

MULTI-USE PATH

POTENTIAL FUTURE MULTI-USE PATH

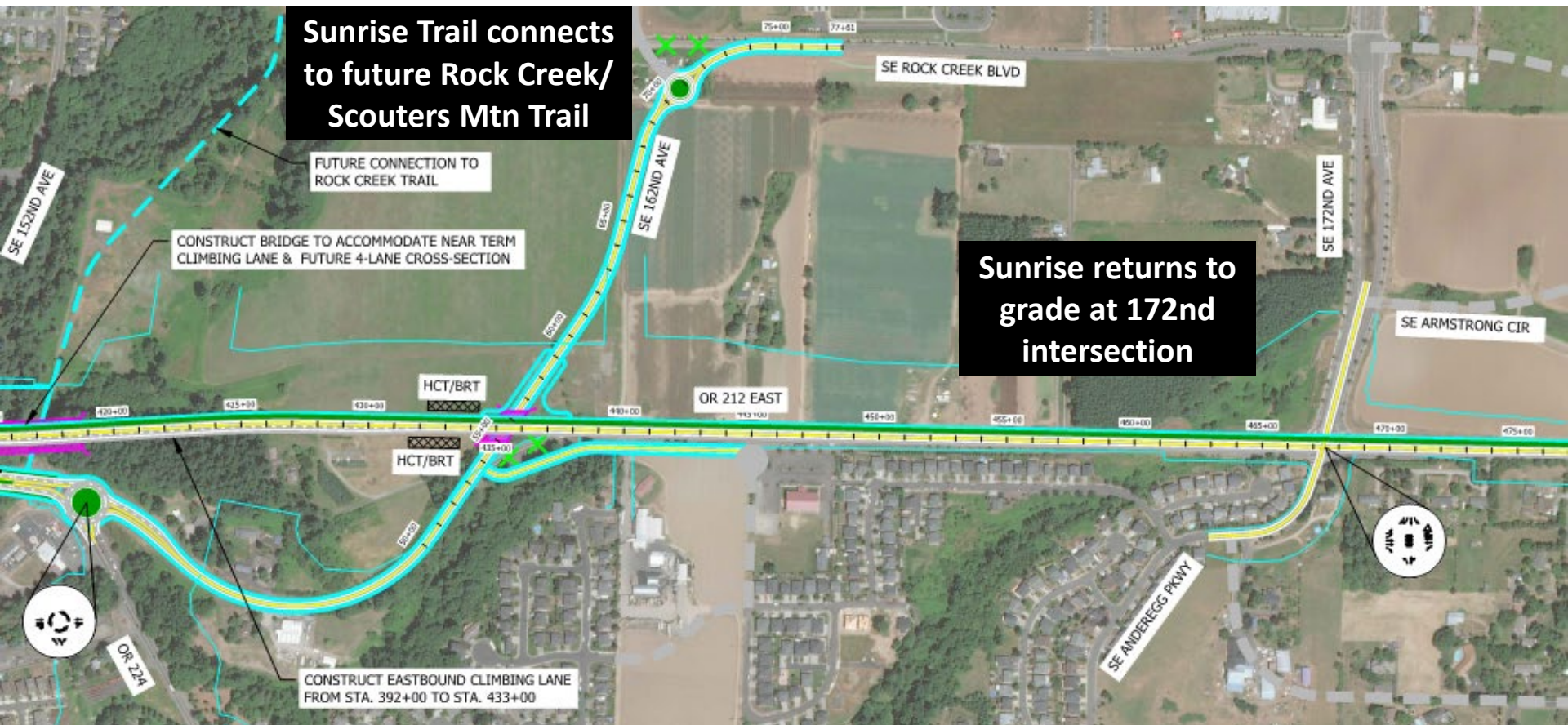
Concept Alignment (1 of 4)



Concept Alignment (2 of 4)



Concept Alignment (3 of 4)

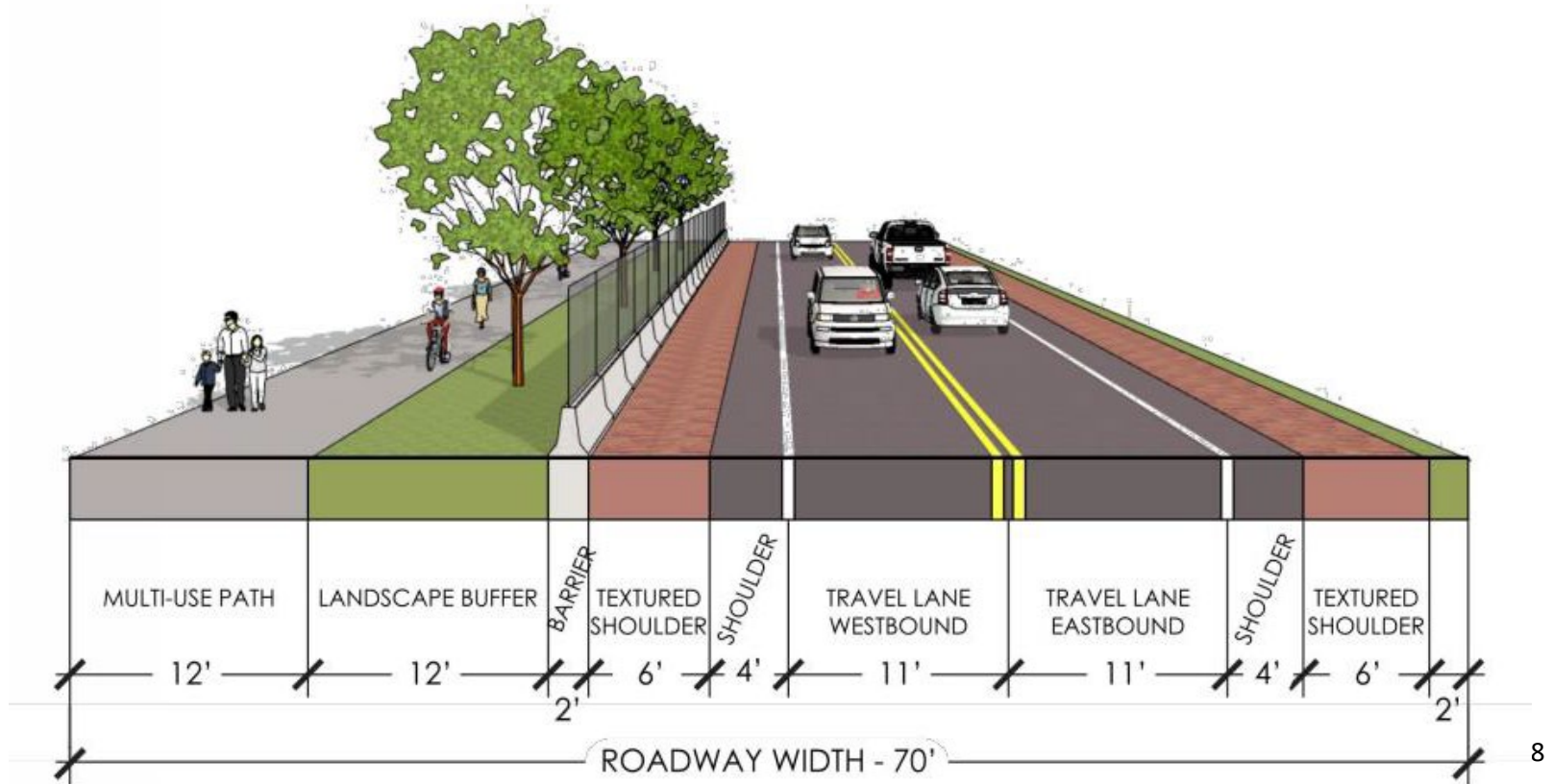


Concept Alignment (4 of 4)



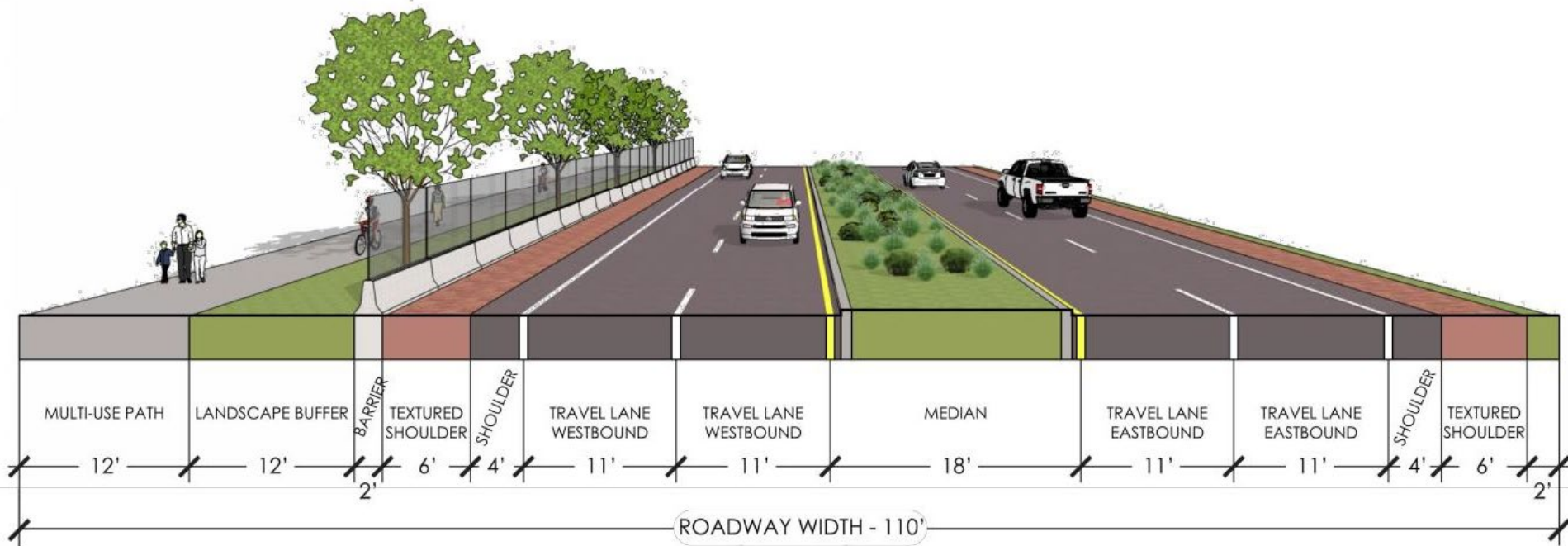
Alternative: 2-Lane with Path

Narrow Travel Lanes with Landscape Buffer - 2-Lane
(Looking East)



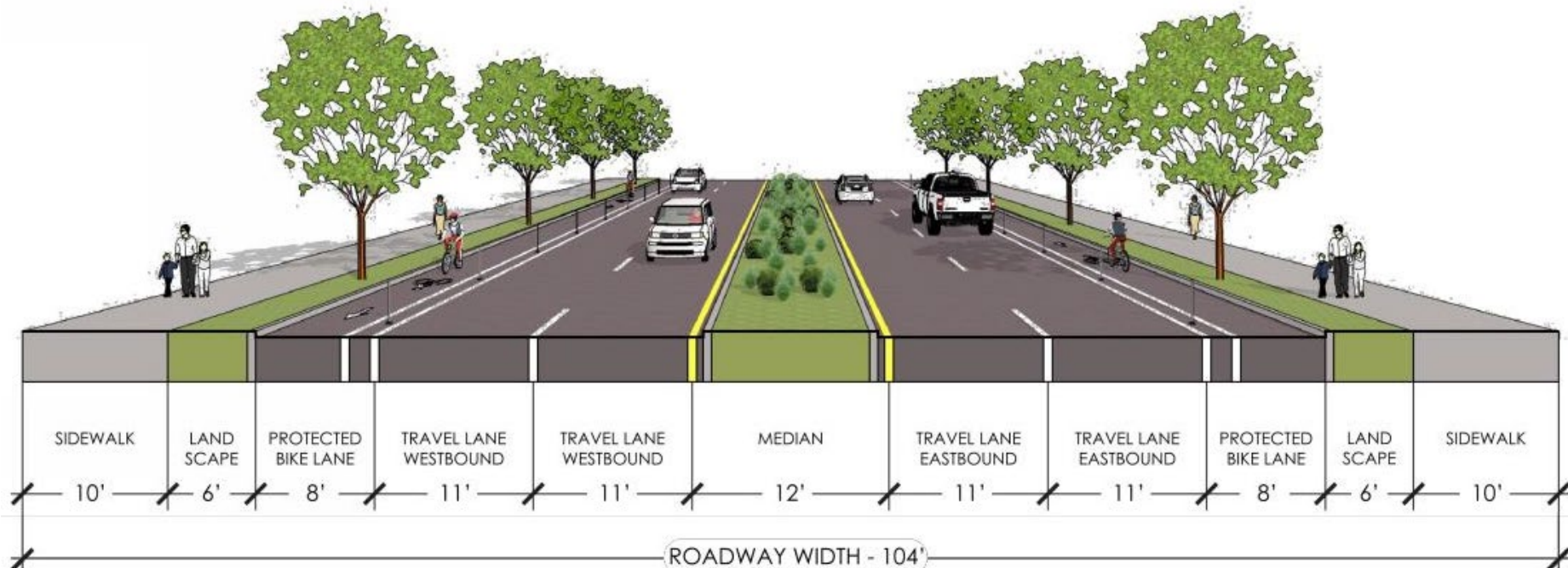
Alternative: 4-Lane with Path

Narrow Travel Lanes with Landscape Buffer - 4-Lane
(Looking East)



Alternative: 4-Lane with Separated Bike Lane and Sidewalk

Regional Street - 4-Lane



Sidepath/Shared Use Path Examples



Identified Issues and Opportunities:

- Existing bottleneck at SE 122nd cause delays to commuters, freight, and recreation travel.
- Existing bottlenecks at Hwy 212/Hwy 224 and SE 172nd limit employment center development.
- Concentration of equity focus areas
- Limited and inconsistent bicycle facilities on Hwy 212

Evaluation Considerations and Themes:

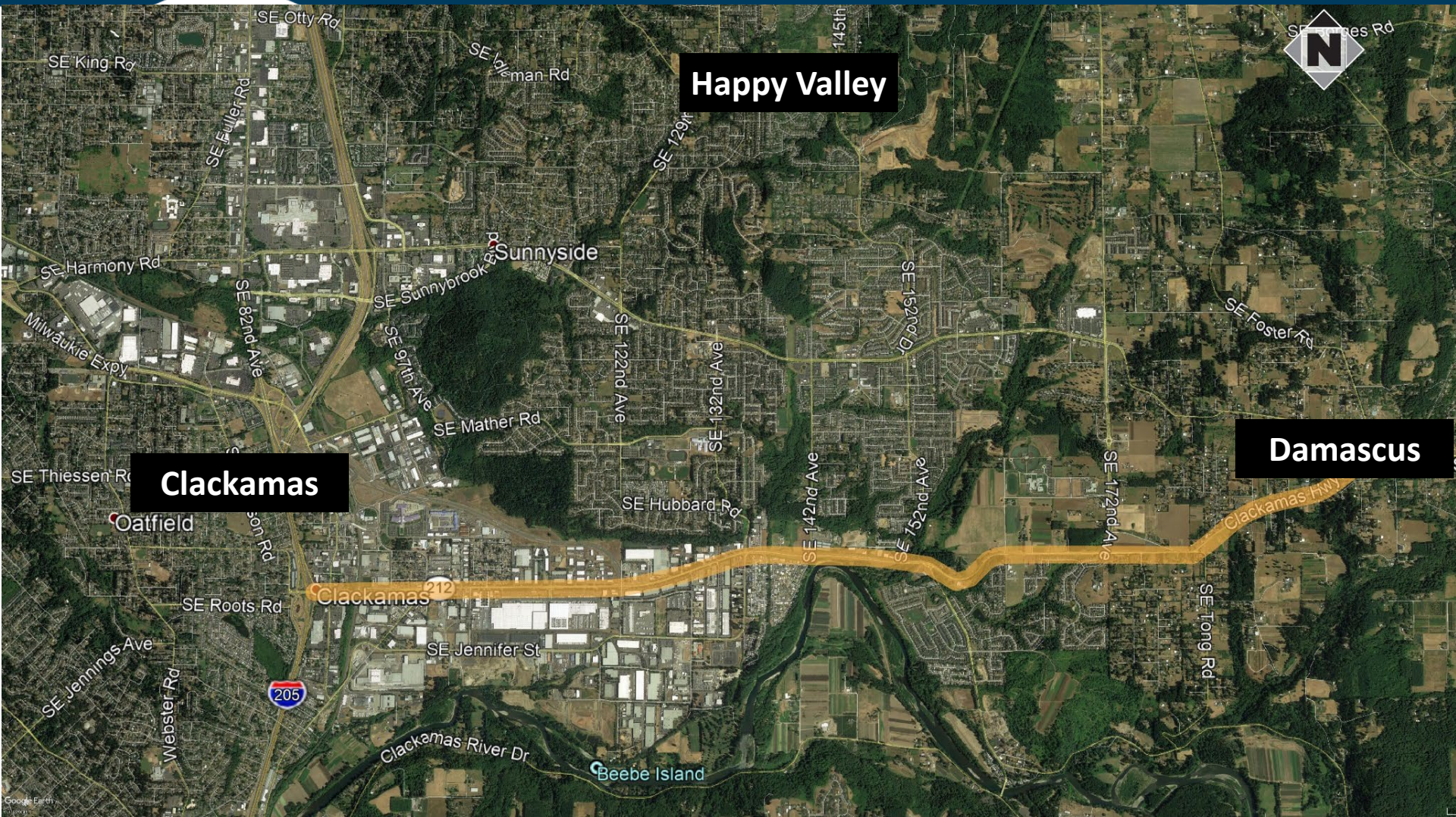
- 2-lane and ultimate 4-lane section to be determined
- Roadway will have limited access to surrounding areas
- Cost and connectivity of at-grade vs elevated roadway were considered in design
- Bike/pedestrian opportunities along and crossing Hwy 212 need to be determined
- Need to determine local street or regional role of old Hwy 212, and its design

Other Projects or Opportunities?

Presentation Outline

- Corridor overview
 - Regional, local
- Projects/opportunities
- Tour follow-up

What else did you notice on the tour?



Key Questions and Considerations

- Should we be building a 2-lane or 4-lane cross-section?
- Use of Sunrise for through trips and the Old Hwy 212 for local access – is this the right approach?
- What should Old Hwy 212 look like after Sunrise is added?
- Do the Sunrise Trail and other ped/bike connections add the right amount of value?

#getmoving2020
getmoving2020.org

