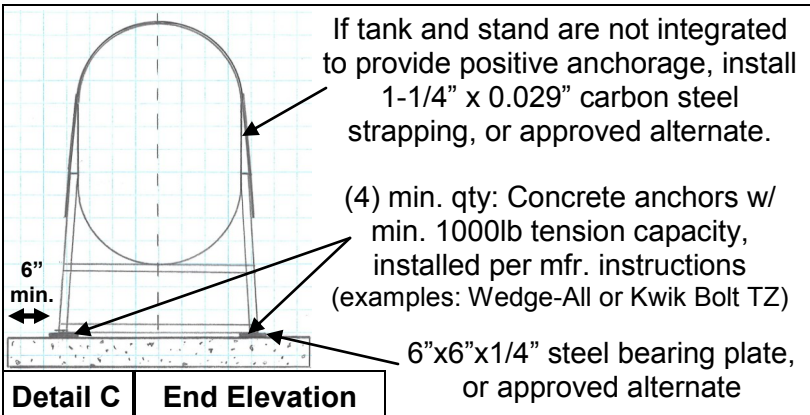
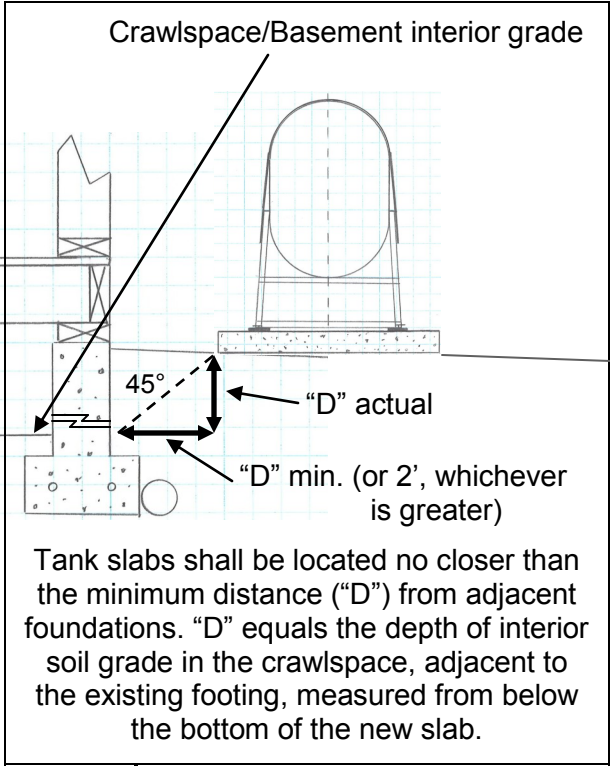
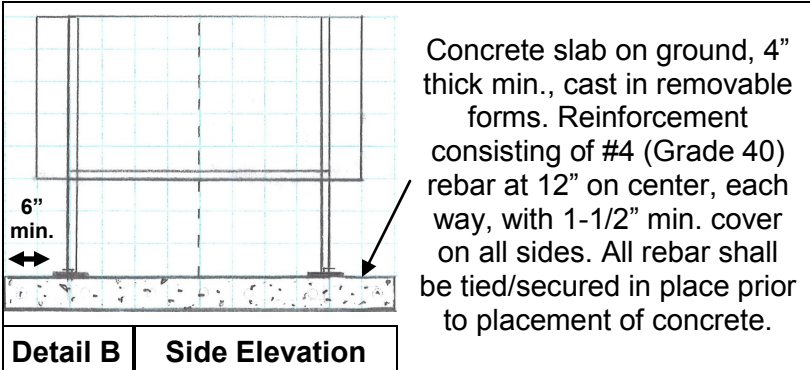
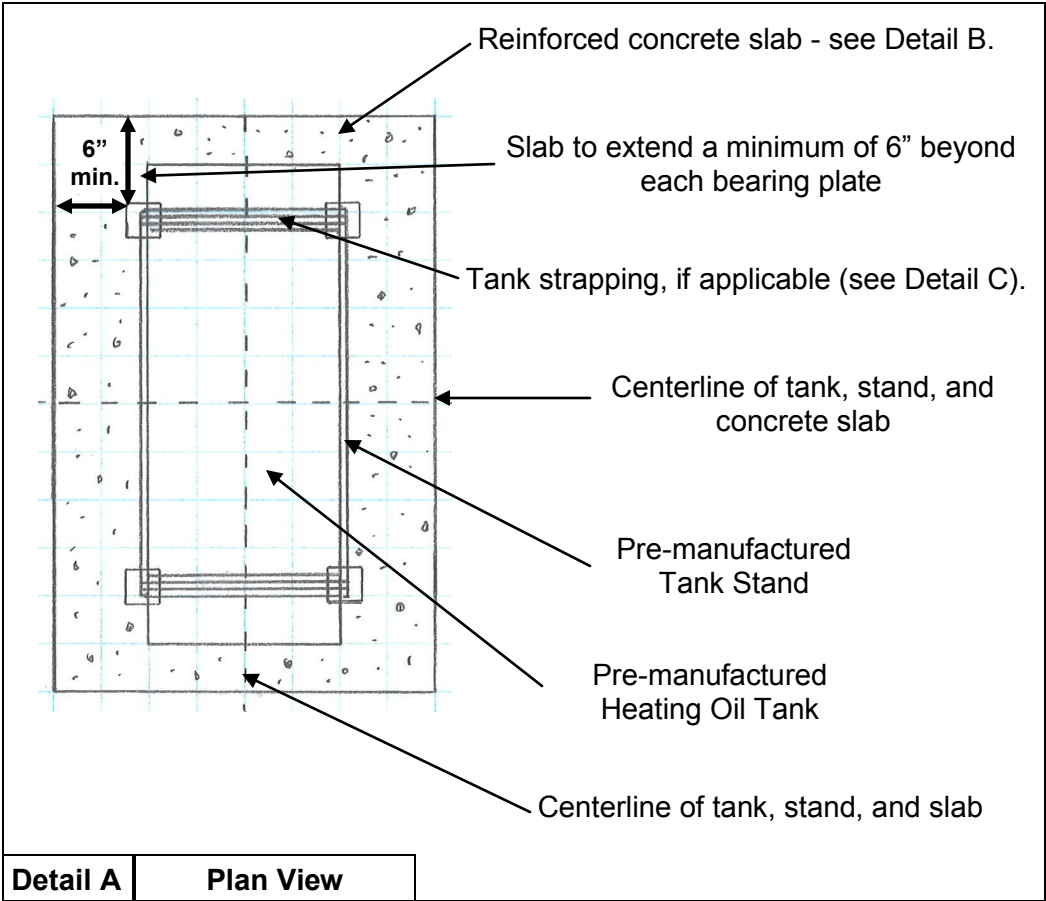


<p>Applicable Codes 2014 OSSC/ORSC 2014 OMSC 2014 OFC</p>
<p>Design Criteria 1500psf Soil Capacity 2500psi Concrete Seismic category D1 120 mph wind, Exposure C</p>
<p>Tank 330 gal. max. capacity 330lb max. tank weight 12 GA , UL Listed</p>
<p>Stand Min. (4) bearing points 6"x6" min. bearing area @ each point Steel Std: ASTM A36 Welding Std: AWS</p>



	<p>S1</p>	<p>Typical Heating Oil Tank (HOT) Installation - Above Ground</p>	<p>V1.2</p>
	<p>Scale: NTS</p>	<p>This typical installation drawing may only be used for approved heating oil tank installations which meet the criteria listed herein. Installations which do not meet these criteria must be designed by an Oregon registered design professional.</p>	<p>6/03/15</p>