



# 2024 ANNUAL REPORT



CLACKAMAS  
WATER  
ENVIRONMENT  
SERVICES

## ..... Message from the Director



I've been fortunate enough to work with Clackamas Water Environment Services for eleven years now, and I still feel incredibly humbled every year when it comes time to develop this report.

Our vision of being a collaborative partner in building a resilient clean water future has been, and continues to be, front and center in every decision we make to deliver reliable services to the people we serve.

2024 was an important year for us to focus on strengthening our ability to serve you through milestone achievements, creative partnerships and innovative approaches, from upgrading and upsizing aging infrastructure, like the Tri-City Water Resource Recovery Facility Outfall Project, to protecting our natural resources and educating the next generation of diverse watershed leaders. Our pursuit of 'clean water for all' is as strong as ever.

In this report, you'll learn how WES' Strategic Plan is at the heart of everything we do – from being stewards of healthy watersheds to upholding our commitment to fiscal responsibility. With the new year on the horizon, we are particularly focused on how energy conservation and generation will play a key role in optimizing our operations to become more efficient with our resources.

Your opinion of our service matters to us, and we would love to hear from you. You can email us at [wescustomerservice@clackamas.us](mailto:wescustomerservice@clackamas.us).

It is our pleasure and privilege to serve you.

Greg Geist  
Director, Clackamas Water Environment Services

## ..... Who We Are

### Mission / Why We're Here

Clackamas Water Environment Services produces clean water, protects water quality and recovers renewable resources. We do this by providing wastewater services, stormwater management, and environmental education. It's our job to protect public health and support the vitality of our communities, natural environment and economy.

### Vision / Where We Are Going

Be a collaborative partner in building a resilient clean water future where all people benefit and rivers thrive.

### Focus Areas / What We Stand For

- Protecting Public Health
- Investment in Our People
- Stewardship of Healthy Watersheds
- Responsive Customer Service
- Fiscal Responsibility
- Water Resource Recovery

## AT A GLANCE

**5**

Water Resource  
Recovery Facilities

**7 Billion**

Gallons per  
year cleaned

**198k**

Estimated  
population served

**23**

Pump stations

**118**

Employees

**359**

Miles of Sanitary  
Sewer Pipes

**10,749**

Surface Water Catch  
Basins

**\$275,940,118**

Budget

# Planning Our Way Forward

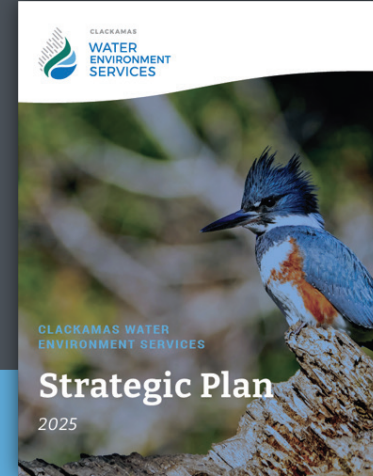
We use four foundational plans to guide our work.

**Our Strategic Plan** focuses our time and resources on those areas and activities that best serve the organization's purpose. It also prioritizes our work in new ways to ensure we meet critical needs, address growing challenges and opportunities, and provide for the district's ongoing, long-term financial requirements.

**Our Capital Improvement Plan (CIP)** is a rolling 5-year plan that identifies and prioritizes wastewater and stormwater construction projects and major equipment purchases.

**Our Annual Budget** reflects the essential resources for the year required to continue producing clean water, protecting water quality, and recovering renewable resources within our service area.

**Our 10-year Financial Plan** combines elements of the CIP, strategic plan, financial policies, and economic assumptions to form a 10-year view of WES's financial position.



## Our Core Strategies

### STRATEGY 1

Workforce Planning and Development

### STRATEGY 2

Utility Operations

### STRATEGY 3

Asset Management

### STRATEGY 4

Capital Planning and Delivery

### STRATEGY 5

Financial Viability

### STRATEGY 6

Customer Satisfaction

### STRATEGY 7

Stakeholder and Community Engagement

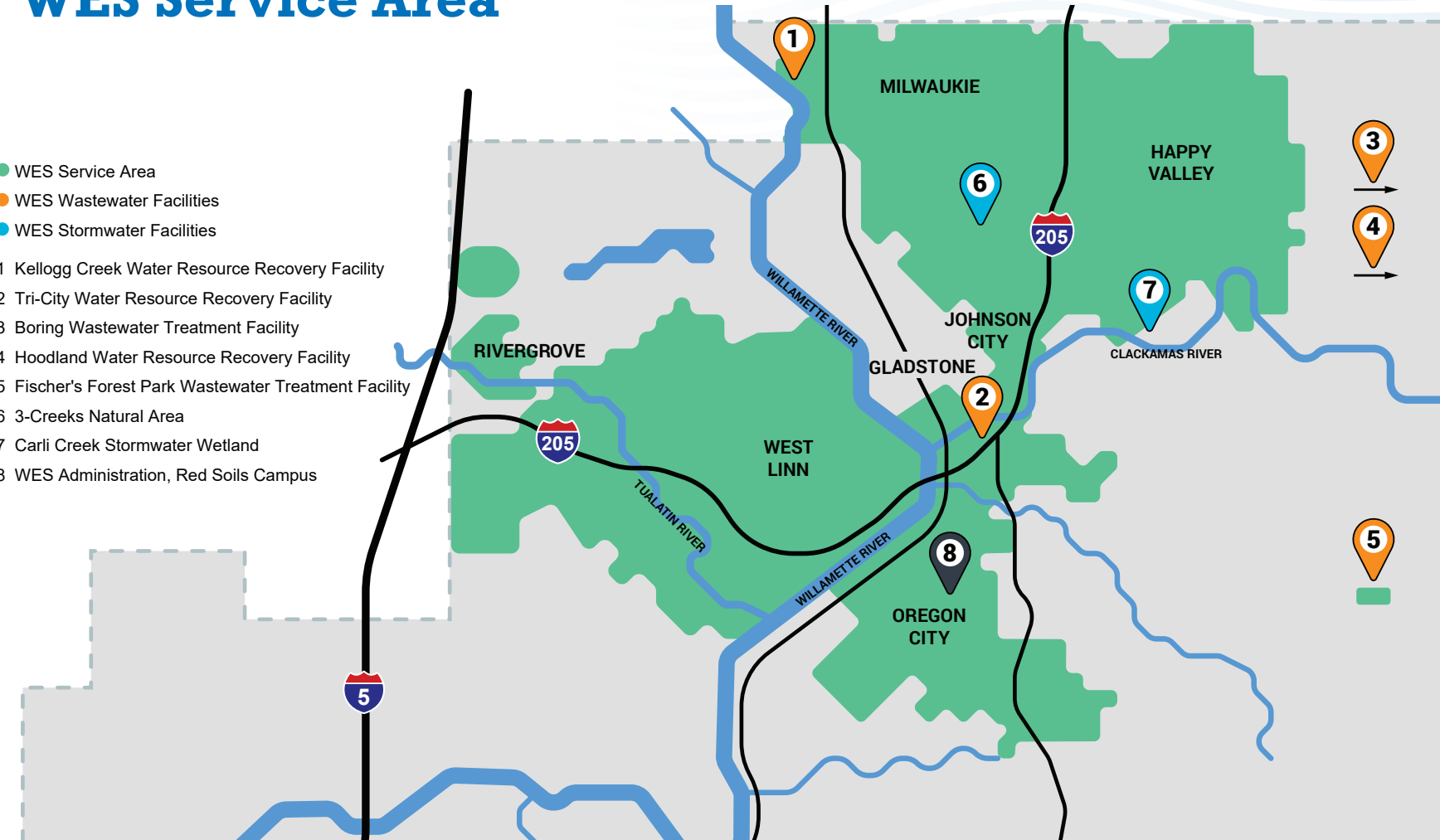


View all our plans at [clackamas.us/wes](https://clackamas.us/wes)

# WES Service Area

- WES Service Area
- WES Wastewater Facilities
- WES Stormwater Facilities

- 1 Kellogg Creek Water Resource Recovery Facility
- 2 Tri-City Water Resource Recovery Facility
- 3 Boring Wastewater Treatment Facility
- 4 Hoodland Water Resource Recovery Facility
- 5 Fischer's Forest Park Wastewater Treatment Facility
- 6 3-Creeks Natural Area
- 7 Carli Creek Stormwater Wetland
- 8 WES Administration, Red Soils Campus



# Planning for the Future



**Jeff Stallard, Capital Program Manager**  
Capital Planning and Delivery

Infrastructure is the backbone of our society and is the thread that connects us all together.

Our Capital Team meticulously plans and executes critical wastewater and surface water infrastructure projects to ensure our region prospers.

Our priorities are guided by our 20-year facility and system plans. These plans leverage population projections, zoning data, and rainfall patterns to shape our future projects. The infrastructure needs and costs are coordinated with our long-term financial plan to refine project delivery timing and ensure long-term stable sewer rate projections for our ratepayers.

We've been busy! On our website, you can follow the progress of several projects, each of which is a critical piece in the broader puzzle we work on every day to provide you with a clean water future.



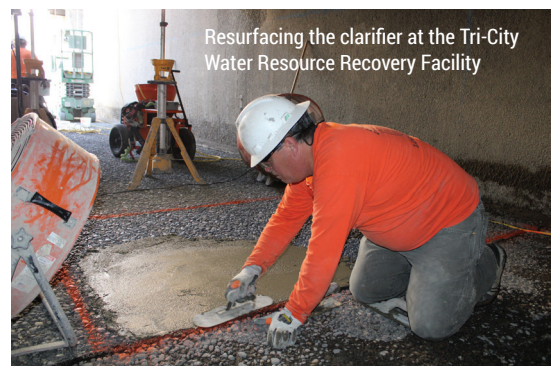
Learn more about our Capital Program:  
[clackamas.us/wes/wes-projects](https://clackamas.us/wes/wes-projects)



Staff in front of the tunnel boring machine "Clack-A-Mole"



Upgrading pumps at the Bolton Pump Station



Resurfacing the clarifier at the Tri-City Water Resource Recovery Facility

# Upgrading and Upsizing Aging Infrastructure

## Capital Planning and Delivery

We clean more than 10 million gallons of wastewater daily at our Tri-City Water Resource Recovery Facility in Oregon City. The treated water, called "effluent," is then sent to the Willamette River. An outfall is the discharge point where the treated water flows into the river.

The current outfall from the Tri-City facility was constructed forty years ago and is nearing capacity during peak wet weather events. To prepare for the increase in flows from projected growth within our communities, a new outfall pipeline is being built at our Tri-City Water Resource Recovery Facility. This new 90-inch outfall pipeline, when paired with our existing outfall, will accommodate anticipated flows to the Tri-City Facility through 2080.



Learn more about the project, and meet Clack-A-Mole, the tunnel boring machine that helped us dig the tunnel and engage with our customers!

[bit.ly/WES-Clackamole](https://bit.ly/WES-Clackamole)



The tunnel boring machine being lowered into the shaft

A segment of the 90-inch pipe



## Quick Wins with Conservation



**Terrance Romaine, Environmental Services Manager**  
Utility Operations

WES staff promotes the fiscally and environmentally responsible use of energy to support the mission of producing clean water, protecting water quality, and recovering renewable resources.

Using electricity, natural gas, and fuel efficiently, WES operations minimize costs and increase resources available to serve the public. In 2024, we committed to implementing a Strategic Energy Management (SEM) program at the Tri-City Water Resource Recovery Facility to identify energy savings projects and ways to maintain reductions indefinitely.

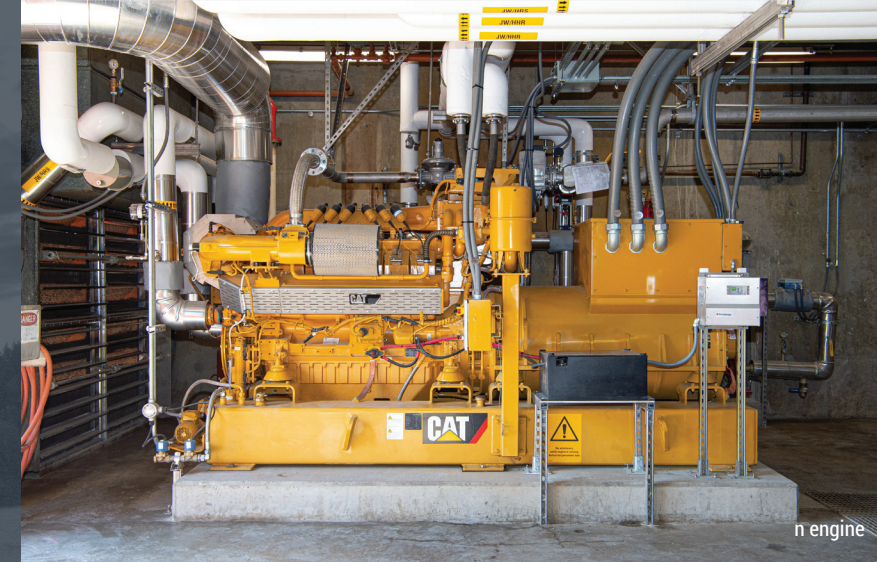
We built a cross-functional energy team that benefits from multiple perspectives. The team's implementation of low and no-cost operational changes led to a significant 4.1% reduction in energy consumption in the facility in the first year. This is just the beginning! Staff are committed to identifying and implementing additional projects, fostering an environment of continuous energy conservation at our facilities.

### Our Seven Quick Wins

- Turn it off
- Tune it up
- Fix the leaks
- Meet the load efficiently
- Question assumptions
- Do it right the first time
- Make it a habit

## Transforming Waste into Energy

### Utility Operations

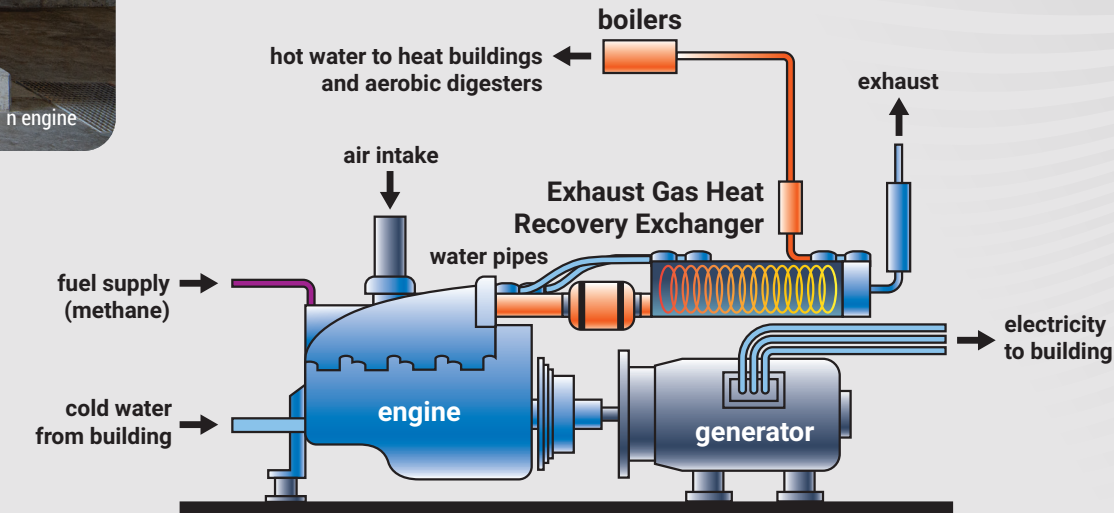


The co-generation system at the Tri-City Water Resource Recovery Facility produces heat for five buildings at the site and generates approximately 4,324 megawatts of electricity each year—enough to offset nearly half of the facility's energy use, worth over \$300,000 annually.

As energy costs continue to rise, our commitment to conserving and generating our own power directly aligns with our goal to better serve our customers. By optimizing our water resource recovery facilities to maximize product quality and reduce resource consumption, we are not only making a positive environmental impact, we are ensuring a more cost-effective future for our operations.

We are as dedicated to generating our own energy as we are to conservation. Our energy source is methane gas, a byproduct of the digestion process that is often wasted through burning or "flaring" in many facilities.

Instead of letting that resource go to waste, we have implemented a system to capture the gas, clean it, and use it to create power and heat with our 600-kilowatt lean-burn engine generator.



The 4,324 megawatts generated is enough to power approximately 400 homes a year!

# ..... Your Frontline Crew

## Field Operations



**Kyle Bean, Field Operations Supervisor**  
*Asset Management, Utility Operations*

Periodically, WES field operations team members may be in your neighborhood.

Our crews respond to 15-20 customer service requests monthly and perform preventive maintenance on nearly 5 miles of sewer mainlines to reduce the risk of service disruptions and wastewater spills. They also inspect and maintain nearly 400 stormwater assets each month, which helps prevent local flooding and improves water quality.

Sometimes, overnight work is conducted on significant projects to minimize daytime traffic impact, and advance notice is provided to affected community members.

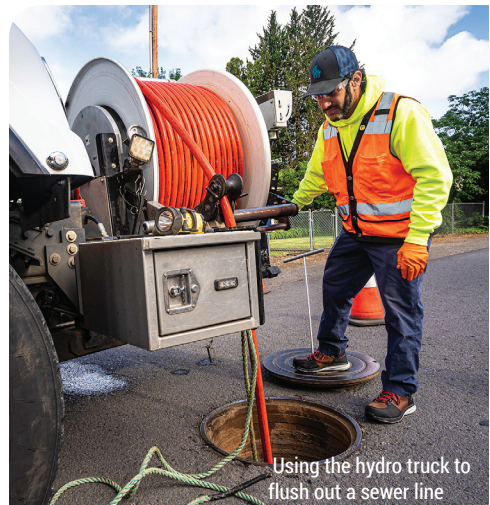
Our field operations crews are crucial in maintaining our shared wastewater and surface water infrastructure, and are your front line crew protecting our water quality.



Learn how you can keep the FOG (fats, oils, and grease) out, and help us protect your plumbing and our shared wastewater system. [clackamas.us/wes/keep-fog-out-of-your-pipes](https://clackamas.us/wes/keep-fog-out-of-your-pipes)



Inspecting a stormwater asset



Using the hydro truck to flush out a sewer line



Tapping into a sewer line

# ..... Serving Your Wastewater Needs

## Facility Operations



**Matt House, Operations Manager**  
*Asset Management, Utility Operations*

At WES, we are devoted to managing our wastewater and stormwater systems to exceed environmental, safety, and public health standards.

We are committed to recovering resources and protecting our watersheds. This year, WES proudly received four Peak Performance Awards from the National Association of Clean Water Agencies (NACWA) for our exceptional wastewater treatment plant operations and permit compliance. Each year, we clean 7 billion gallons of water!

Upgrading and maintaining our shared investment is a high priority for the operations team. An example of our efforts is the work on our primary clarifiers at the Tri-City Facility, which required upgrades to ensure efficient solids removal from wastewater. Four clarifiers have already been successfully rehabilitated, with the remaining two scheduled for upgrades in 2025.



We'd love to show you behind the scenes! Sign up to tour one of our facilities at [clackamas.us/wes/ssewer.html](https://clackamas.us/wes/ssewer.html)



Kellogg Creek Water Resource Recovery Facility



Hoodland Wastewater Treatment Facility



Tri-City Water Resource Recovery Facility

# Preserving Watershed Health



**Rob Livingston, Technical Services Specialist**  
Utility Operations

Our Surface Water Management Program encompasses all the different ways we work with local businesses and commercial property owners to reduce pollution in our local creeks and streams and protect drinking water resources like the Clackamas River.

Our industrial/commercial stormwater inspections get us out in the community to talk about best practices on keeping stormwater clean by inspecting private systems and preventing pollution impacts from materials and products stored outside.

Annually, we perform about 100 inspections of private stormwater systems, and we aren't stopping any time soon. Our goal is to visit as many sites as possible, prioritizing the most opportunistic sites first. That's what we did with our partner and known beverage manufacturer, PepsiCo, for example.



See how WES and PepsiCo's collaboration is helping to build a resilient clean water future.  
[bit.ly/WESStormwaterInspections](https://bit.ly/WESStormwaterInspections)



Inspecting a stormwater facility



The stormwater pond at PepsiCo



A stormwater system inlet

# Building Partnerships



**Alexa Morris, Utility Relations Stakeholder and Community Engagement**

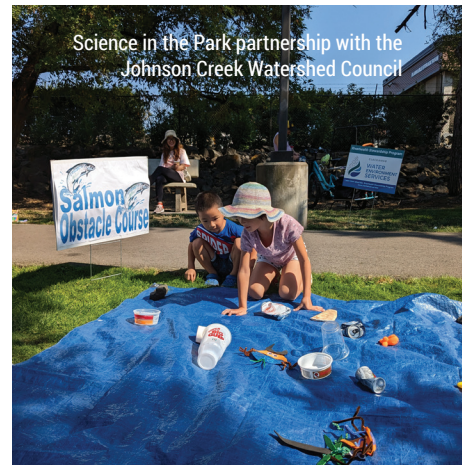
We are committed to building a clean water future for all through community partnerships. In 2024, we awarded \$300,000 in grants through our RiverHealth Stewardship Program to 12 organizations dedicated to protecting and improving the health of our watersheds and educating a future generation of diverse watershed leaders.

The successful partnership between environmental non-profit SOLVE and WES continued in 2024 with the annual Summer Waterway Cleanup Series. With the help of 1,461 volunteers, 28,278 pounds of trash were removed from waterways and natural areas in Clackamas County. SOLVE cleanups mobilize and educate volunteers of all ages about the importance of protecting our shared environment and how we can build a legacy of stewardship.

You can help protect our waterways by joining a volunteer event or learning about our environment at an educational event.



Find opportunities on our event calendar.  
[bit.ly/WES-Events](https://bit.ly/WES-Events)



Science in the Park partnership with the Johnson Creek Watershed Council



The WES-SOLVE cleanup at High Rocks

# Financial Stewardship

Carefully Managing Your Ratepayer Dollars



**Erin Blue, Finance Manager**  
*Financial Viability*

We are committed to responsibly managing the ratepayer dollars our customers provide, ensuring financial security and trust in our services.

Through careful financing planning, and despite rising construction and operating costs, WES is maintaining and building critical wastewater and surface water infrastructure while ensuring reliable service delivery with only minor, predictable rate increases.

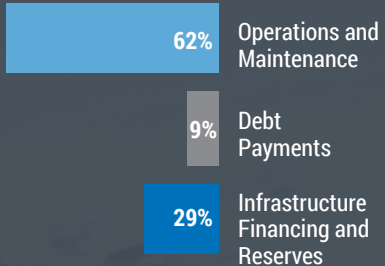
In 2024, WES was honored with the Government Finance Officers Association's Certificate of Achievement for Excellence in Financial Reporting and Distinguished Budget Presentation Awards, a testament to our exceptional financial management.

Our budget and long-term financial plans are more than financial documents; they are a declaration of our commitment to fiscal responsibility and the essential nature of our work. Beyond the numbers, we are delivering meaningful outcomes for the communities we serve and ultimately building a resilient clean water future where all people benefit and rivers thrive.



Review our budget and financial reports:  
[clackamas.us/wes/financial-reports](https://clackamas.us/wes/financial-reports)

## Your Rate Dollars at Work



### Operations and Maintenance

- All wastewater treatment services
- Plant maintenance
- Regulatory compliance, including laboratory
- Collection system maintenance
- All surface water services
- Stormwater infrastructure maintenance
- Restoration and enhancement of riparian areas
- Public education related to water quality
- Watershed planning

### Debt Payments

- Principal and interest on long-term debt used to finance capital projects

### Infrastructure Financing and Reserves

- Construction projects
- Building treatment capacity for future growth
- Reserves for future project needs
- Equipment replacement

# Our Leaders

Board of Directors and Advisory Committee

The Clackamas County Commissioners serve as WES' governing Board of Directors.

Commissioners receive recommendations from the WES Advisory Committee on a variety of issues. The WES Advisory Committee includes ratepayers, environmental representatives, business owners, members of the development community and elected officials.

Members bring experience in wastewater management, watershed health and restoration, economic development and surface water. The committee provides input and makes recommendations to WES and the Board of Directors.



Learn more about the WES Advisory Committee  
[clackamas.us/wes/advisorycommittee](https://clackamas.us/wes/advisorycommittee)



Clackamas County Commissioner and WES Board of Directors member Martha Schrader joins WES staff at the Down the River cleanup

Advisory committee member William Gifford, WES Director Greg Geist, advisory committee chair Greg DiLoreto, Capital Program Manager Jeff Stallard, advisory committee member Rita Baker at the Clack-A-Mole launch event

**“At WES, we all  
serve different  
functions, but  
we fit together to  
solve the clean  
water puzzle.”**

- WES Director Greg Geist



CLACKAMAS

**WATER  
ENVIRONMENT  
SERVICES**

Clackamas Water  
Environment Services  
150 Beaver Creek Road  
#430  
Oregon City, OR 97045

503-742-4567  
wescustomerservice@  
clackamas.us

[clackamas.us/wes](http://clackamas.us/wes)

