

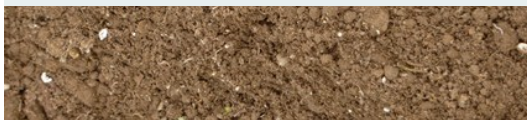


## Growing the growers

Clackamas County is a major breadbasket, providing food, and other agricultural products, for the greater Portland region and beyond.

The agricultural “cluster” of farms and associated business in the County is an economic engine for the region and a vital part of the county’s industrial mix.

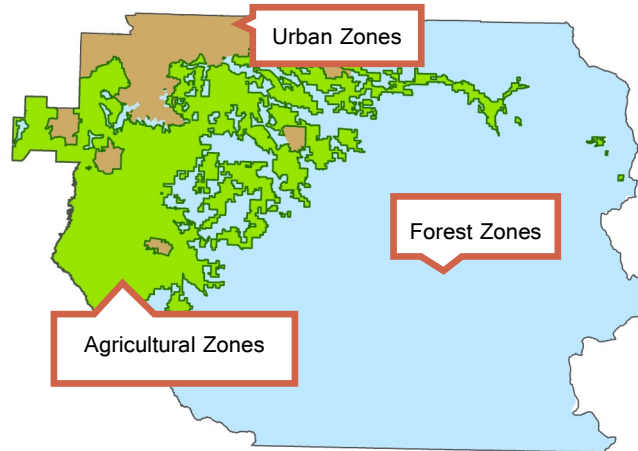
The economic impact of agriculture in Clackamas County has both regional and statewide significance, having the most farms, most organically-certified farms, and consistently ranked among the state’s top counties in farm sales.



## THE WHY, HOW, AND WHAT OF AGRICULTURAL INVESTMENT PLAN:

**Why:** Every year, \$4.8 billion is spent on the consumption of food, and related inputs, from outside the region. 90% of our food is currently imported from outside Clackamas County. Each 10% of food purchases sourced from growers and producers inside Clackamas County will have a \$21 million annual economic benefit.

**How:** Provide support and technical assistance to producers, processors, and distributors; recognize just over 200,000 acres are actively managed for agricultural, food, and nursery products via the ONeStop Farmgate. 21% of all land in the County are designated for Agriculture. These agricultural lands are capable of expanding the economic food system to achieve a 10% import substitution goal.



**What:** The Clackamas County **Agricultural Investment Plan (AIP)** focuses on expanding countywide economic growth by fostering and capturing emergent markets and business opportunities in the County’s agricultural sector.



## CLACKAMAS COUNTY’S AGRICULTURE GOALS:

**Assistance & Training:** We developed the ONeStop webportal, an online directory of agencies, educators, professional services, and non-profits providing assistance to agricultural businesses. [www.clackamasfarmonestop.com](http://www.clackamasfarmonestop.com)



**10% Import substitution:** Identify opportunities for local producers to increase production and sales of local food products within the region. Find opportunities to expand local food consumption.

**Food Processing:** Assist small scale growers to access to food processing operations (either on-farm or off-farm) and provide a value-add function to increase per-unit income. Develop a strategy to attract and grow more food processors.

**New Markets:** Link institutional purchasers and farmers. Develop a program or organization to link large employers and institutions in the County to farmers and local product distributors.

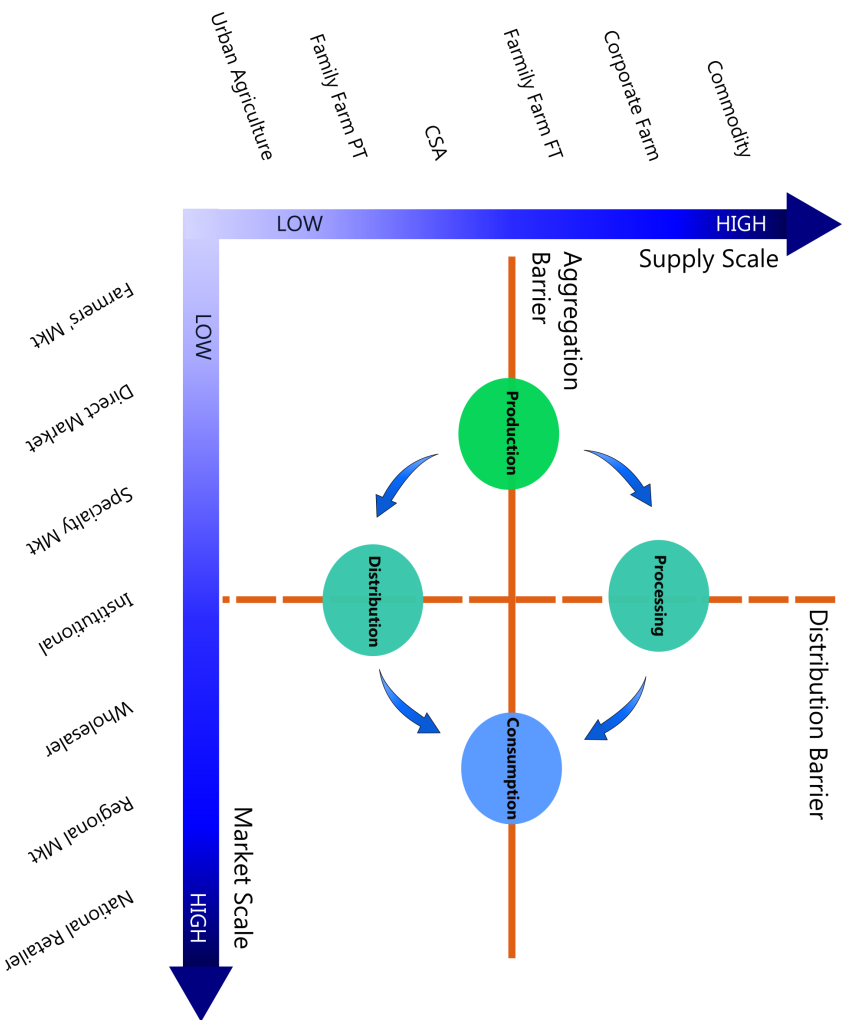


# Clackamas County Agriculture Investment Plan



Cultivating growth and prosperity

## Food System Supply Chain



### Impact and Benefits

#### Barriers to Market

The absence of a comprehensive agricultural infrastructure impedes the growth of a resilient food system that is reliant on imports. Small scale farm operations face barriers of **producing** enough food and **delivering** it to larger scale markets.

#### Building Connections

The ONeStop Farmgate is positioned to help connect food growers to aggregators, processors, and distributors to meet year-round supply of healthier local foods.

Clackamas County - Ag. and Forest Economic Development  
 rignuen@clackamas.us  
 503-742-4344  
 150 Beaver Creek Road