

CLACKAMAS COUNTY BOARD OF COUNTY COMMISSIONERS

Study Session Worksheet

Presentation Date: September 19th, 2017 **Approx. Start Time:** 2:30 pm Approx.

Length: One Hour.

Presentation Title: Equity Pilot Areas – Investment options

Department: County Administration/H3S

Presenters: **Dan Chandler**
 Dr. Tia Ho

Other Invitees: **Richard Swift**

WHAT ACTION ARE YOU REQUESTING FROM THE BOARD?

Pursuant to Board direction in the 2017 Performance Clackamas Update, we are asking the commission to provide direction on selecting equity pilot areas where the County, acting with its partners, will implement a coordinated strategy to reduce poverty and food insecurity.

EXECUTIVE SUMMARY:

In July, 2017 the Board of Commissioners approved a new strategic plan. The Board of Commissioners adopted a set of milestones, community indicators and goals across 5 Areas of Strategic Focus:

- **Build public trust through good government.**
- **Grow a vibrant economy.**
- **Build a strong infrastructure.**
- **Ensure safe, healthy and secure communities.**
- **Honor, utilize, promote and invest in our natural resources.**

Among those goals were the following:

- By September 2017, Clackamas County will identify equity pilot areas where the county will focus efforts to reduce poverty and food insecurity.

- a. Urban City
- b. Rural City
- c. Rural Unincorporated
- d. Urban Unincorporated

ATTACHMENTS:

- a. Power Point with maps.
- b. Data tables of selected areas.

SUBMITTED BY:

Division Director/Head Approval _____

Department Director/Head Approval _____

County Administrator Approval _____

For information on this issue or copies of attachments, please contact Dan Chandler @ 503-742-5394

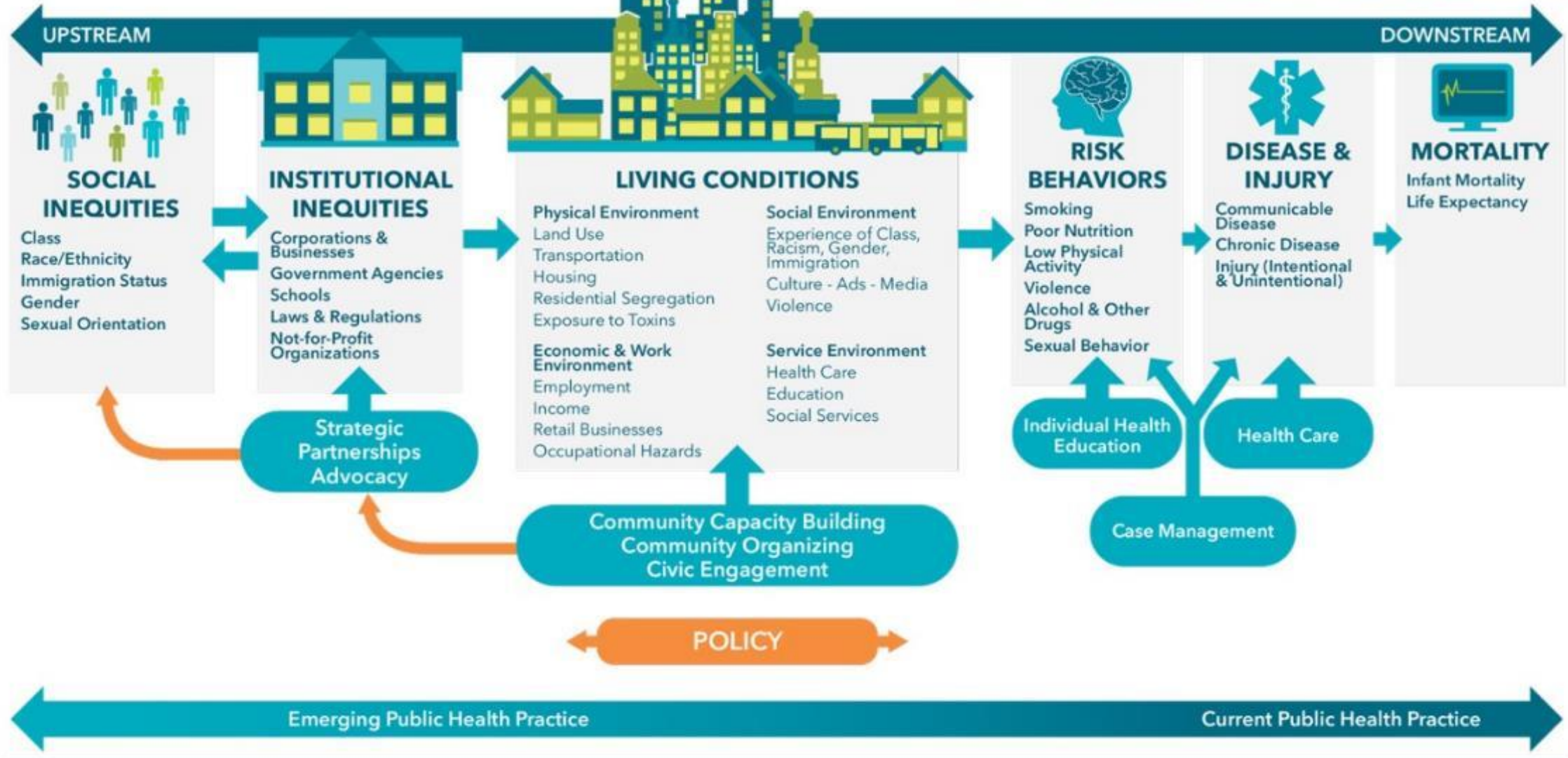
Equity Pilot Areas: Possibilities for Investment



Purpose today

- By September 2017, Clackamas County will identify equity pilot areas where the county will focus efforts to reduce poverty and food insecurity.
- By February of 2018, there will be a coordinated and focused strategy to reduce the poverty rate in each equity pilot area by 10%.²
- By February 2018, there will be a focused and coordinated strategy to reduce food insecurity by 10% in each equity pilot area.

A PUBLIC HEALTH FRAMEWORK FOR REDUCING HEALTH INEQUITIES
 BAY AREA REGIONAL HEALTH INEQUITIES INITIATIVE



Source: Bay Area Regional Health Inequities Initiative

Opportunity Context Matters

“Opportunity” is a situation or condition that places individuals in a position to be more likely to succeed or excel.

Opportunity Structures

- High-quality education
- Healthy and safe environment
- Stable housing
- Food access
- Living wage employment
- Transportation access
- Political empowerment
- Outlets for wealth-building
- Positive social networks

Our opportunity context matters



Some people ride the “Up” escalator to reach opportunity

Others have to run up the “Down” escalator to get there

Clackamas County Strategic Plan

- Build public trust through good government
- Grow a vibrant economy
- Build strong infrastructure
- Ensure safe, healthy & secure communities
- Honor, utilize, promote and invest in our natural resources

Performance Clackamas: Poverty reduction and food security

Areas Are Opportunity for Investment

Examples of Possibilities:

- Support Small Businesses
- Expand Affordable Housing Access
- Innovate for Food Access
- Tailor Education Supports
- Expand Transportation Access



Photo Source: Matthew Warner



Photo Source: Chris Phan

Support Small Businesses

Microenterprise

- Foster, incubate small businesses (<6 staff)
- Small business loans
- Networking
- Training
- Business planning
- Equipment (i.e. commercial kitchens)
- Help generate higher income than service sector jobs alone

Partner for Further Investment

Rural Small Grant Programs (USDA)

- Rural Energy for America Program
- Rural Business Development Grants



Business Incubator Center, CO

Expand Affordable Housing

Community Development Corporations

- Affordable Housing Development
- Education, Training, and Homeowner Assistance
- Economic Development
- Community Development
- Asset and Property Management



Innovate for Food Access

Hood River

- Region wide
- Cross sector partnership
- Multiple investment sources

Veggie Rx Program

- Screening
- Prescription
- Redemption
- Refills



Tailor Education Supports

PreventNet Community Schools

- Coordinated services
- Multi-sector approach
- Multiple providers in Clackamas of PreventNet (NW Family Services, Todos Juntos, others)

Partner with Clackamas Workforce Partnership

Career and Technical Education

- Engaging, relevant classes related to job opportunities
- Required by state law
- Supports current teens in the short term
- Grants for schools



Expand Transportation Access

Transit Agencies

- Canby Area Transit
- Canby Ferry
- CRC-TMA
- Transportation Reaching People (TRP)
- South Metro Area Rapid Transit
- Fearless Sandy Area Metro (SAM)
- South County Transportation District
- Mt. Hood Express

Partner to Seek Support Funds

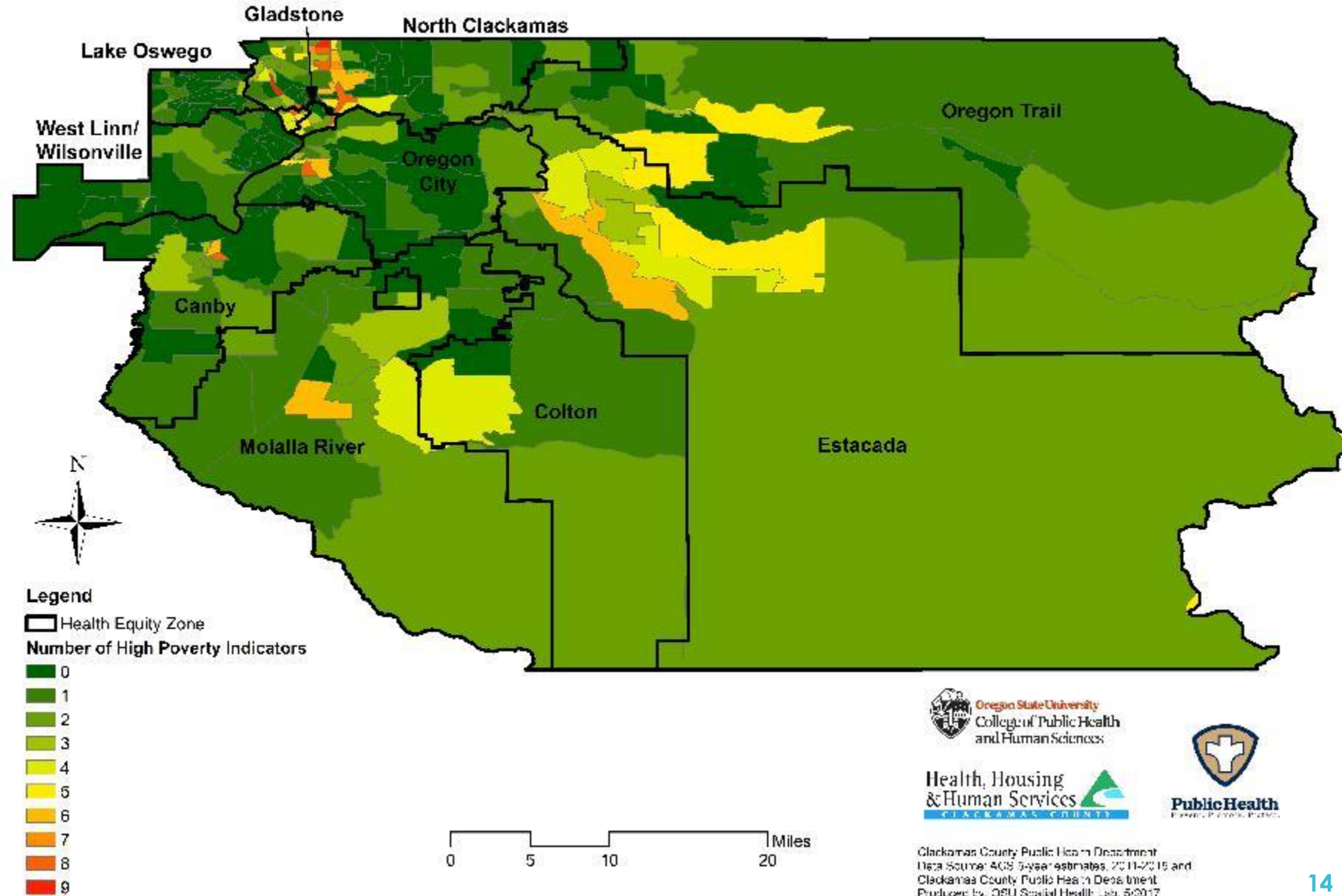
- Assess desire & need by population
- Identify residents not being adequately served
- Trimet fare relief grants example



Summary of Themes

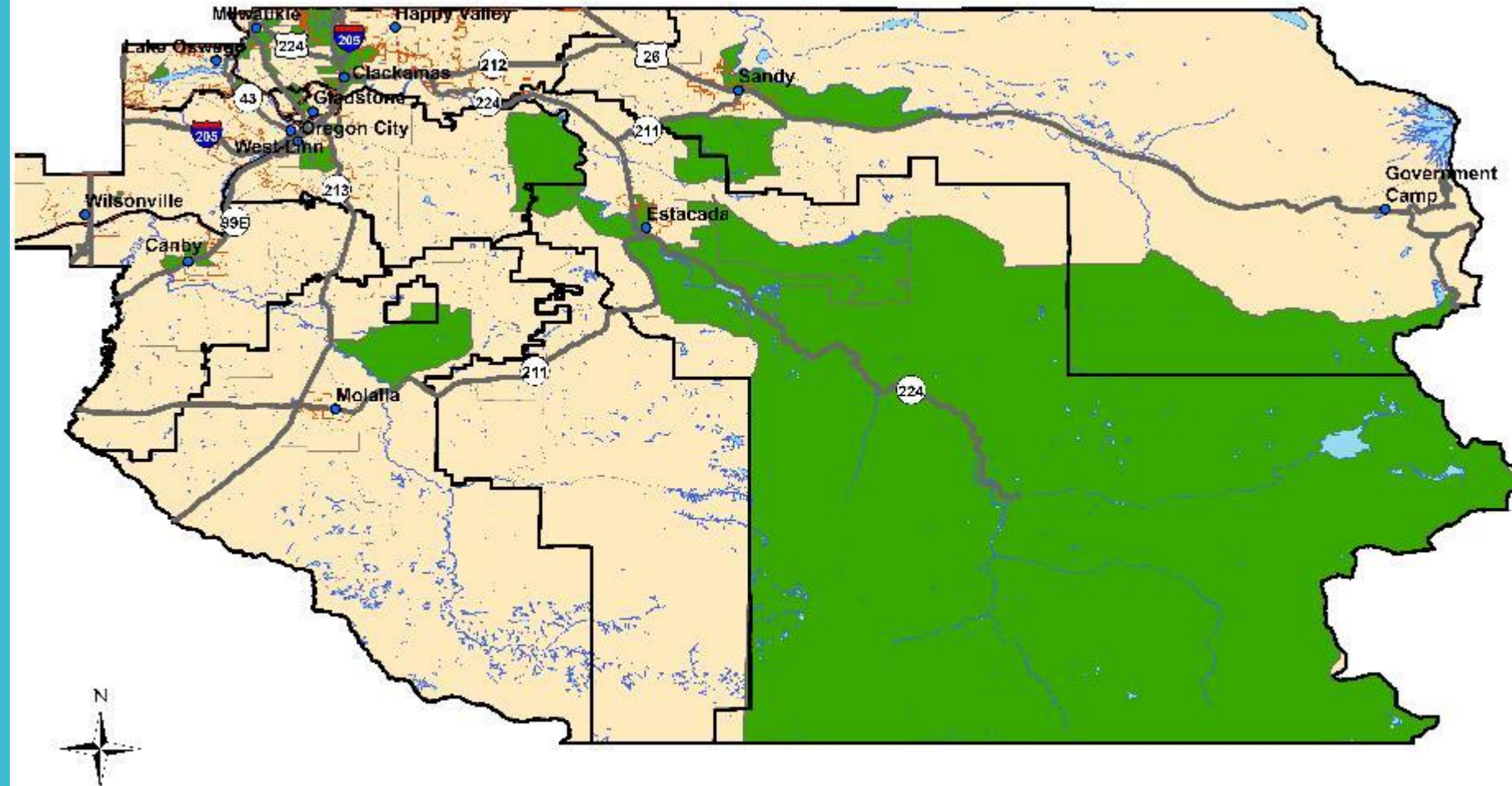
- **Investment** from various sources to extend what is possible (i.e. it's not just government)
- **Leverage** county funding, including county grants
- **Tailored approach** to unique context using data to support making changes
- **Engaged** community members in leadership roles
- **Partnerships** with organizations from multiple sectors, systems and cultures
- **Connected and coordinated** services
- **Persistence**

Number of High Poverty Indicators per Census Block Group by Health Equity Zone



Map 1:
Broad
View of
9 Poverty
Indicators

High Population in Poverty by Health Equity Zone



Legend

- Major Cities
- Major Highways
- City Limits
- ▭ Health Equity Zone
- Water Bodies
- High Poverty

0 5 10 20 Miles

Map 2:
Overall
Poverty



Health, Housing
& Human Services
CLACKAMAS COUNTY

Clackamas County Public Health Department
Produced by: OSU Social Health Lab: 5/2017



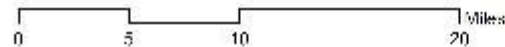
Map 3: Children in Poverty

High Percentage of Children in Poverty by Health Equity Zone



Legend

- Major Cities
- Major Highways
- City Limits
- ▭ Health Equity Zone
- Water Bodies
- High Childhood Poverty



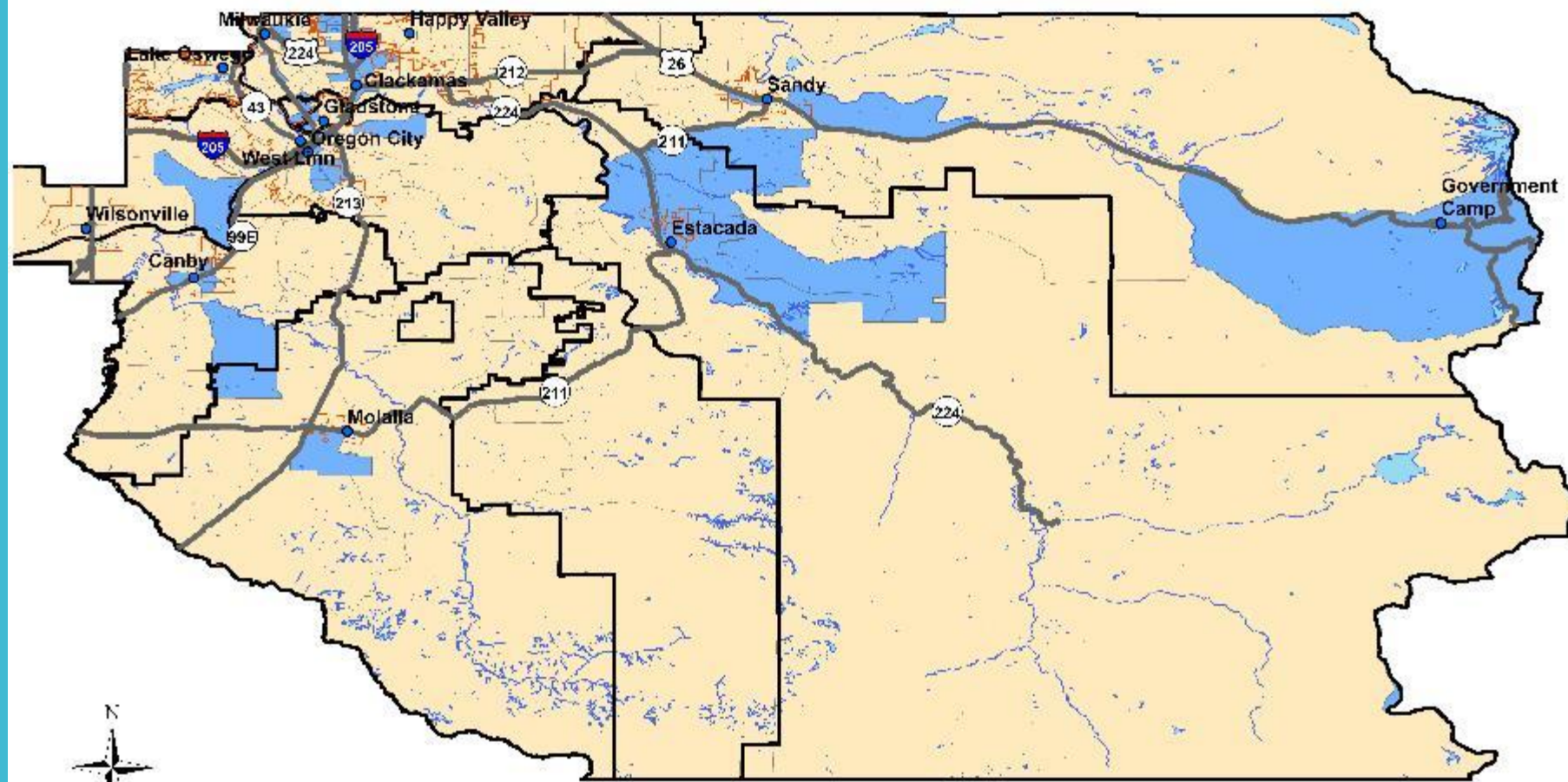
Health, Housing
& Human Services
CLACKAMAS COUNTY



Public Health
Prevent. Promote. Protect.

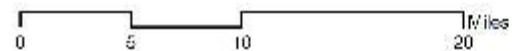
Clackamas County Public Health Department
Producer by OSU Spatial Health Lab, 10/2017

High Number of Households Receiving SNAP benefits by Health Equity Zone



Legend

- Major Cities
- Major Highways
- | City Limits
- ▭ Health Equity Zone
- Water Bodies
- High SNAP recipients



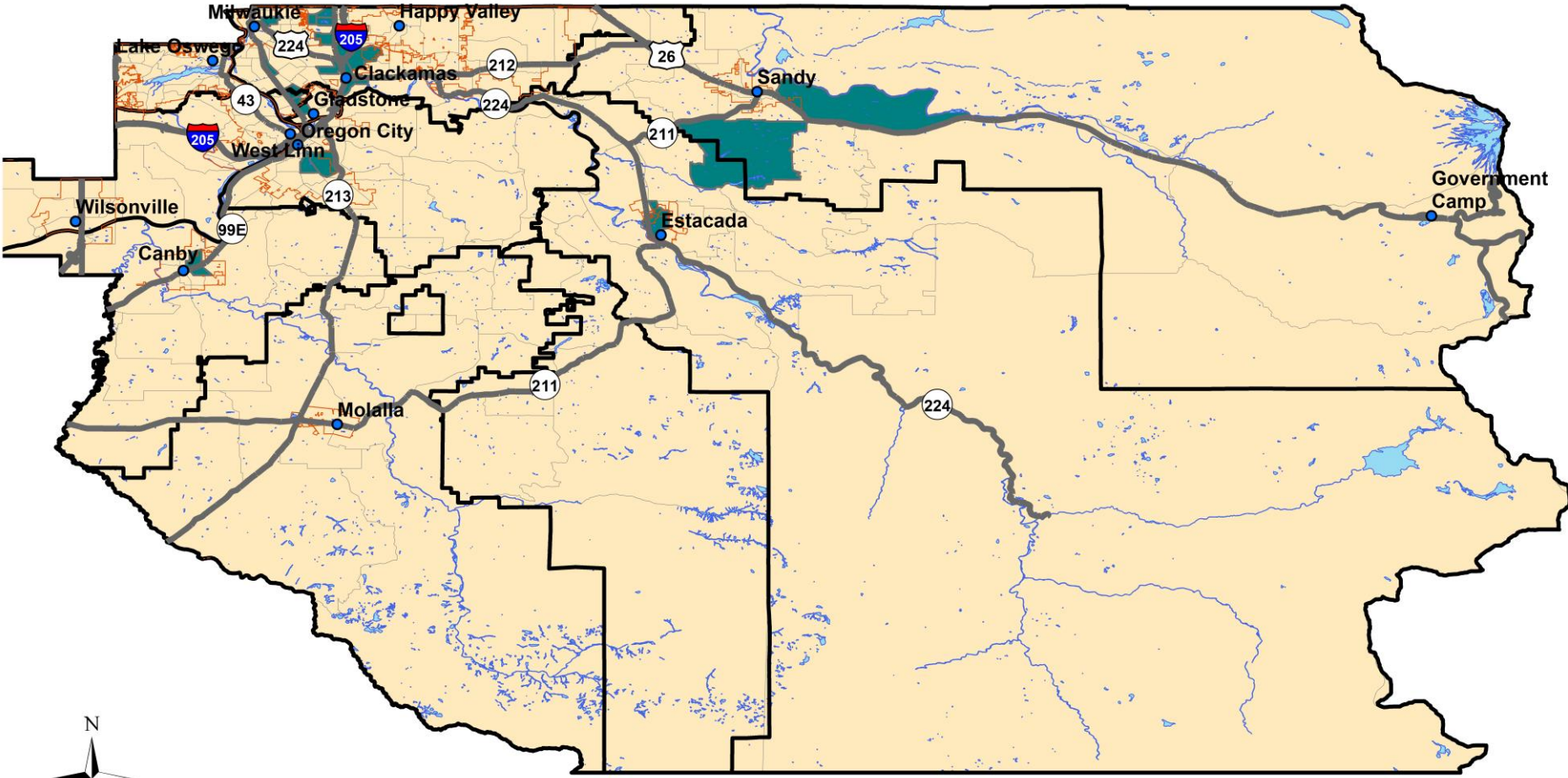
Map 4:
Food
Insecurity
(SNAP)



Clackamas County Public Health Department
Produced by: OSU Spatial Health Lab: 5/2/17

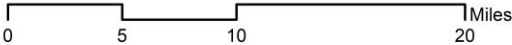
Opportunity Investment Areas by Health Equity Zone

Map 5:
Areas Where
3 Poverty
Indicators
Are Highest



- Legend**
- Major Cities
 - Major Highways
 - City Limits
 - ▭ Health Equity Zone
 - Water Bodies
 - High Poverty Intersection

The blue areas indicate where the highest number of households or population (with the % or # from the source maps of the upper quintile listed respectively) are experiencing overall poverty, childhood poverty and are also receiving SNAP benefits. Data comes from the ACS 2011-2015 5-year estimates

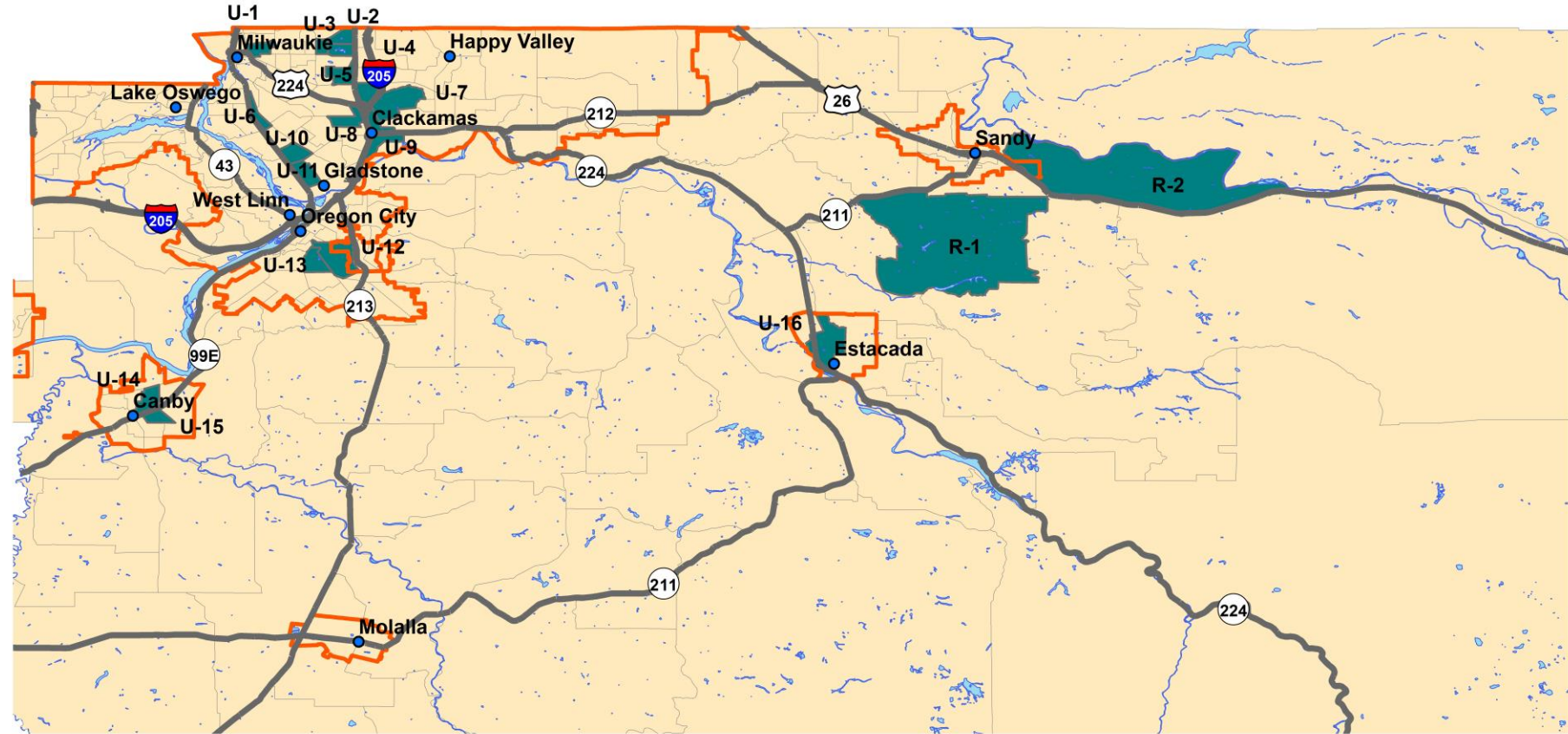


Public Health
Prevent. Promote. Protect.

Clackamas County Public Health Department
Produced by: OSU Spatial Health Lab; 5/2017

Intersection of High Poverty Indicators including Overall Poverty, High Childhood Poverty, and Number of SNAP Recipients

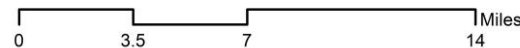
Map 6: Close Up View of Intersection Areas



Legend

- Major Cities
- Major Highways
- Urban Growth Boundary- 2015
- Water Bodies
- High Poverty Intersection

The teal areas indicate the intersection where overall poverty is in the upper 20% for the entire county, childhood poverty is in the upper 20% for the county, and upper 20% of those receiving SNAP benefits.



Public Health
Prevent. Promote. Protect.

Clackamas County Public Health Department
Data Source: ACS 5-year estimates, 2011-2015 and
Clackamas County Public Health Department
Produced by: OSU Spatial Health Lab; 9/2017

THANK YOU!

D. Daniel Chandler, J.D.
Assistant County Administrator
503-742-5394
Dchandler@co.Clackamas.or.us

Tia H. Ho, PhD, MST
Senior Policy Analyst
503-742-5369
tho@co.clackamas.or.us



Equity Areas Descriptors

These areas are census tracts. References to a City refer to a city within which the census tract lies.

Maps provided by Oregon State University through partnership with Clackamas County Public Health Division

ID	Population	Number of Households	% Non English	% in Poverty	% Child Poverty	# of Households Receiving SNAP	% Unemployed	% No HS Diploma	Life Expectancy
Rural Unincorporated									
R-1	1750	601	5.99	23.65	23.01	130	25.45	25.42	70.14
R-2	1854	633	14.38	19.63	13.06	150	13.53	28.01	74.24
Urban Cities									
U-1 (Milwaukie)	1535	770	19.74	19.37	17.78	235	4.42	27	68.69
Urban Unincorporated Areas									
U-2	1137	518	12.55	34.65	29.94	195	15.12	33.72	67.1
U-3	998	427	3.98	17.34	22.75	126	17.78	31.04	71.41
U-4	2955	1036	22.49	37.01	28.7	278	5.44	41.88	69.06
U-5	1907	746	10.45	22.26	25.16	252	17.46	25.65	72.62
U-6	1106	437	27.69	18.98	12.18	142	26.7	37.4	70.83
U-7	2672	952	22.16	18.3	13.23	261	4.78	32.76	58.95
U-8	2275	837	8.48	28.61	26.17	325	10.74	30.9	75.99
U-9	1919	837	15.65	24.86	24.11	322	14.09	35.55	67.78
U-10	2706	1004	16.13	24.84	20.39	403	12.06	34.92	71.6
U-11	2690	1057	12.58	20.79	17.56	271	7.12	38.13	71.24
U-12	2860	1035	8.89	29.56	22.04	368	10.49	29.35	79.28
U-13	2084	674	19.73	22.33	22.92	312	10.65	34.14	74.43
Rural Cities									
U-14 (Canby)	1967	688	16.86	21.91	17.77	201	12.64	29.34	70.19
U-15 (Canby)	2227	743	35.94	36.01	31.25	226	11.13	33.73	72.25
U-16 (Estacada)	1675	690	5.22	28	19.74	258	12.06	45.59	73.57

R= Rural (outside the Urban Growth Boundary)

U= Urban (inside the Urban Growth Boundary)