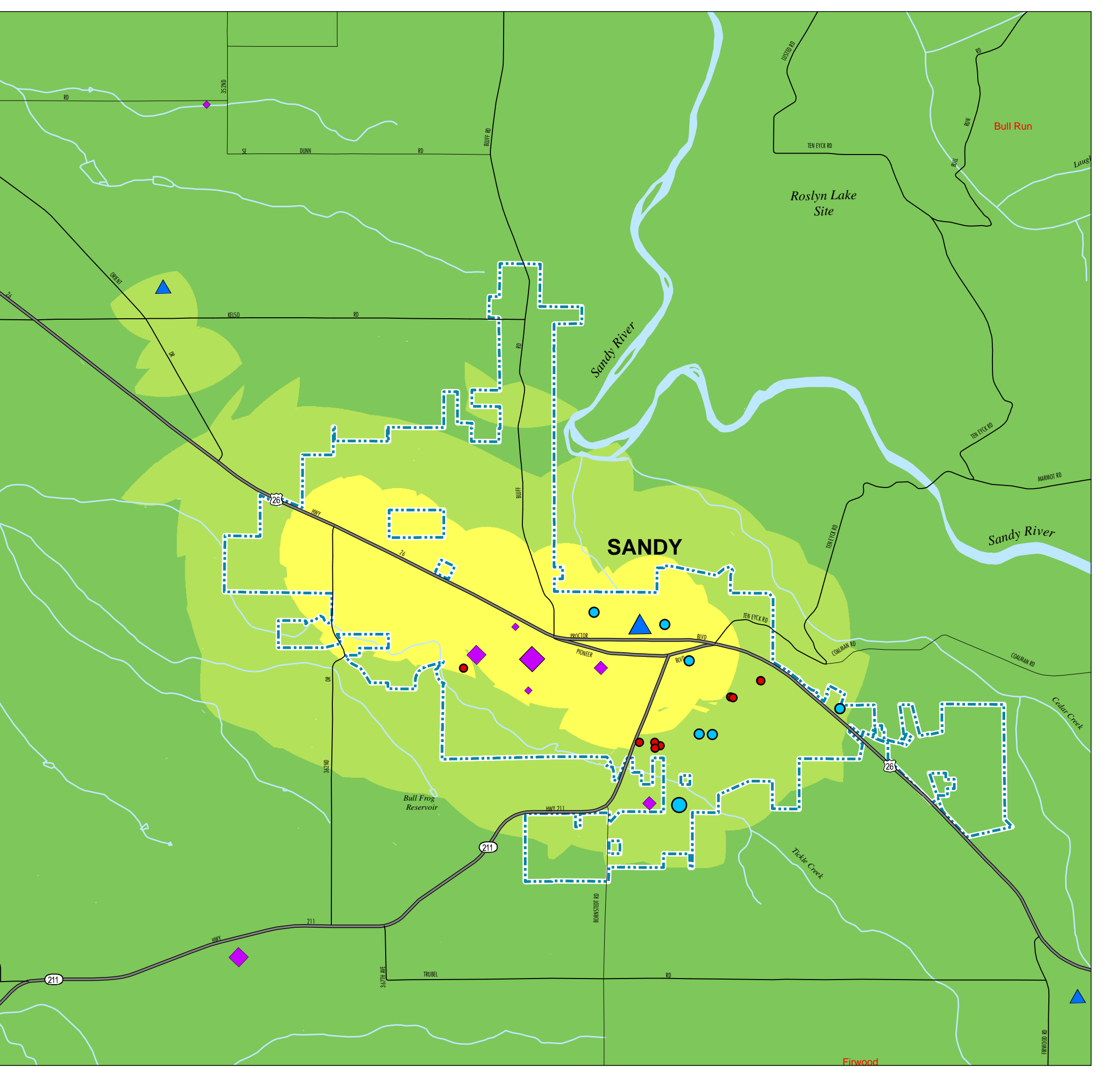
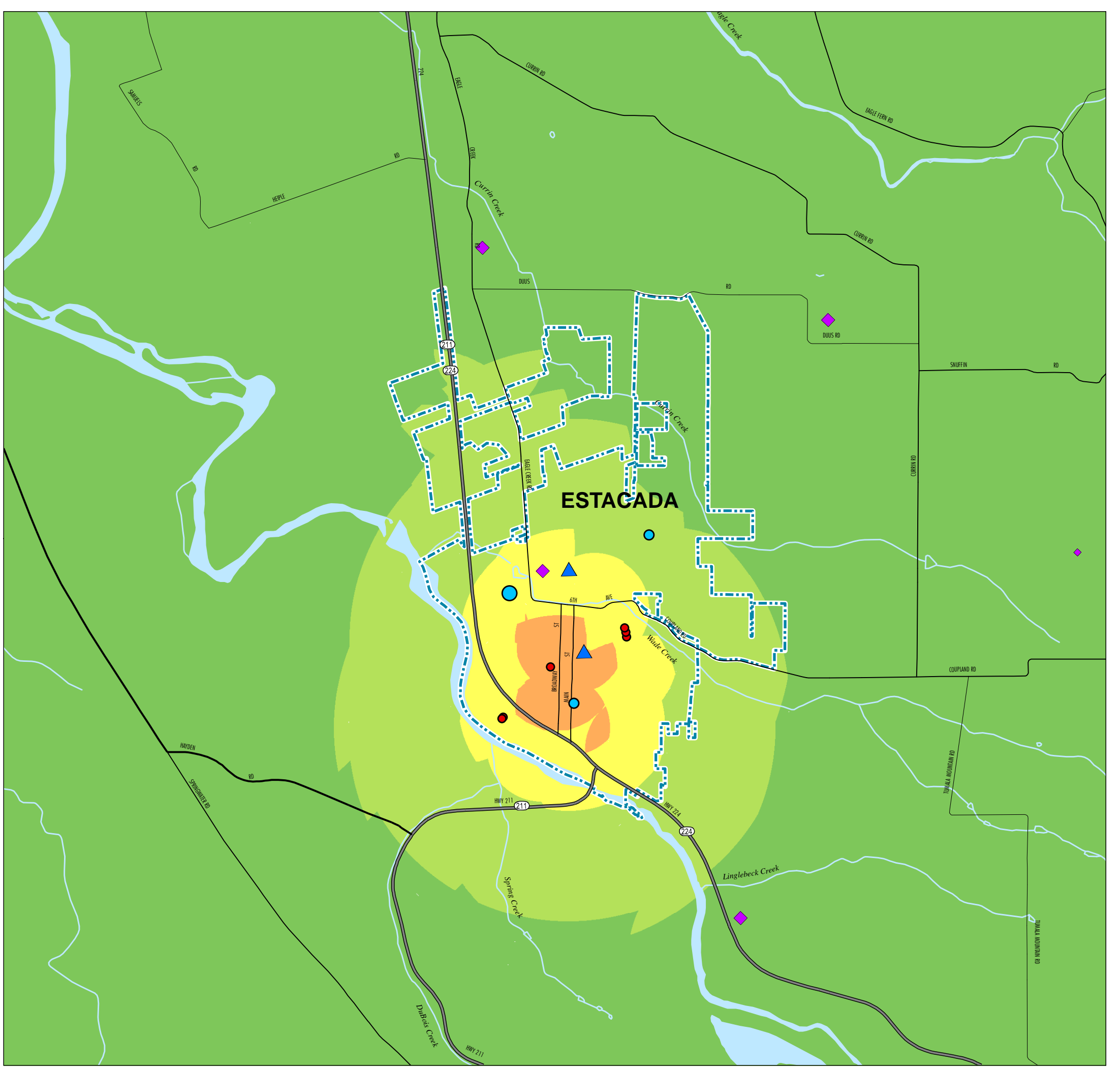
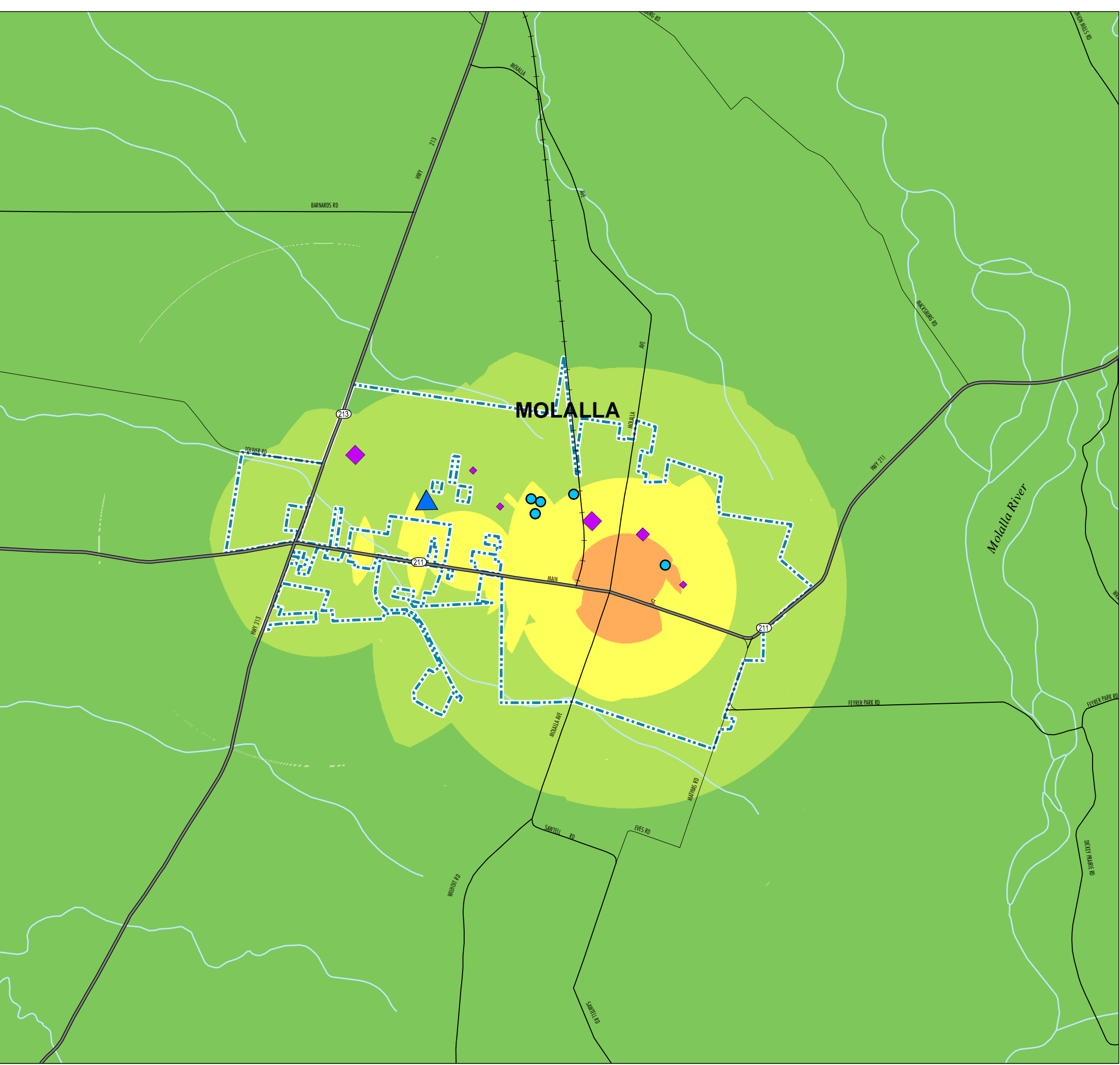
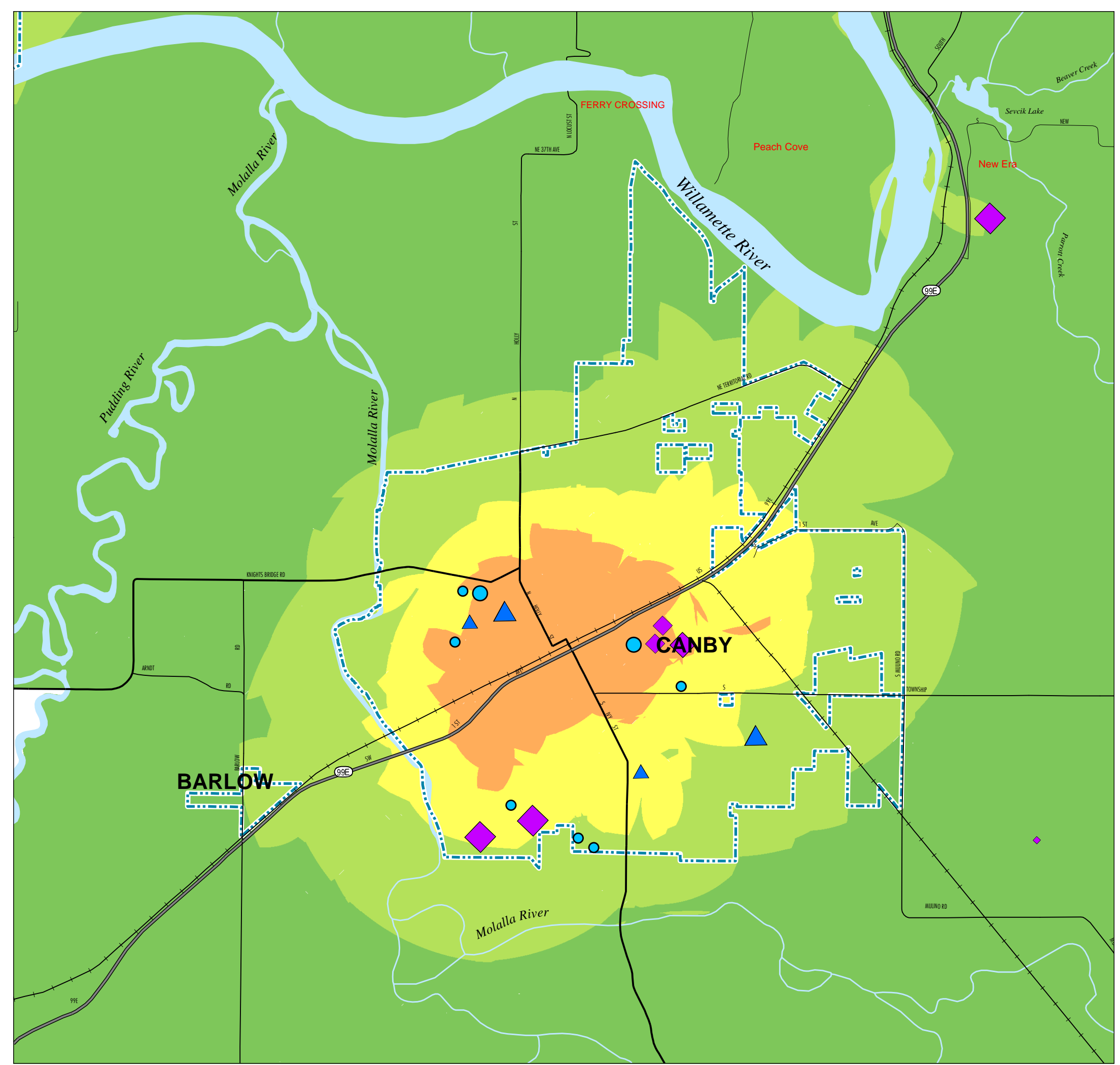
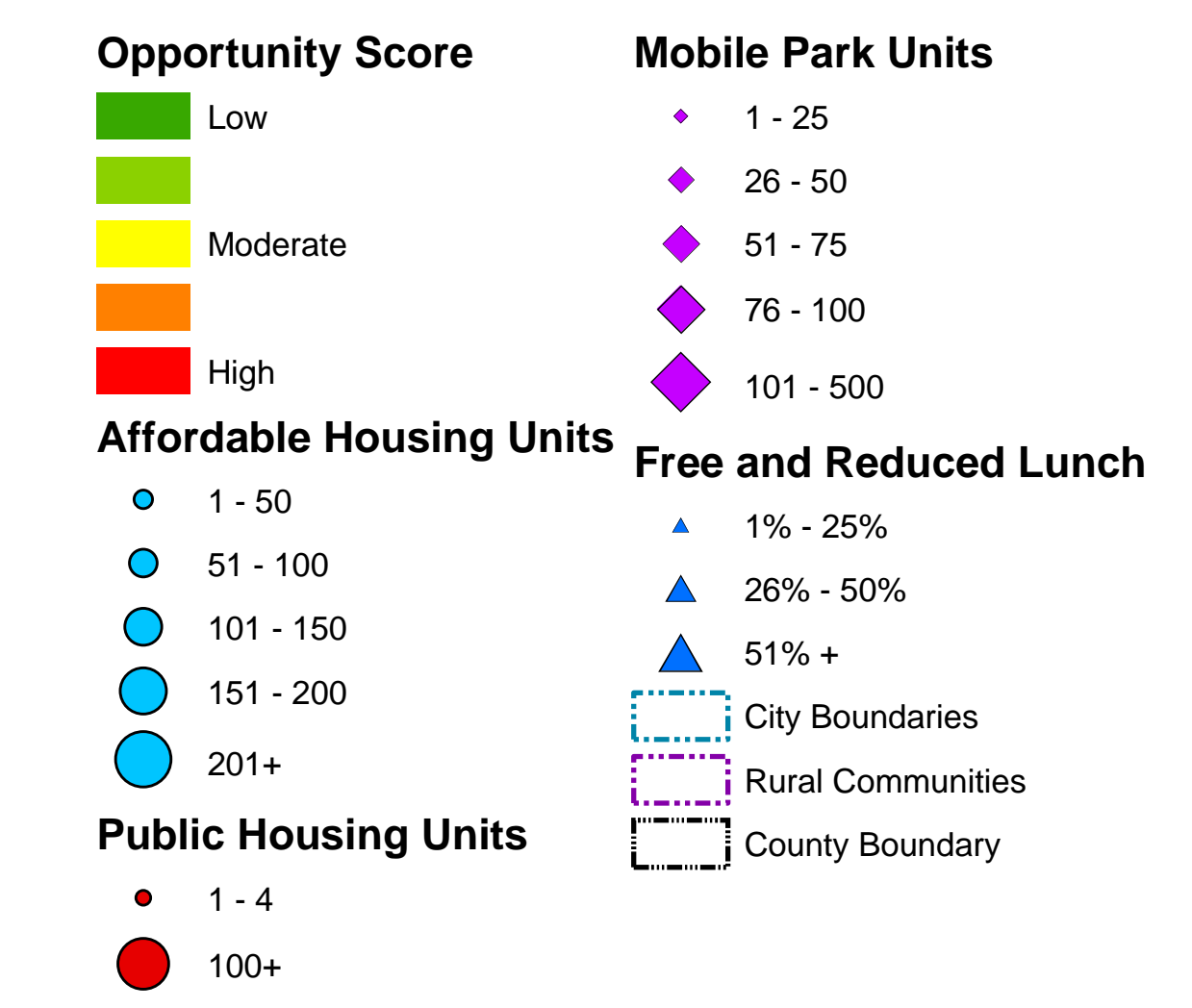


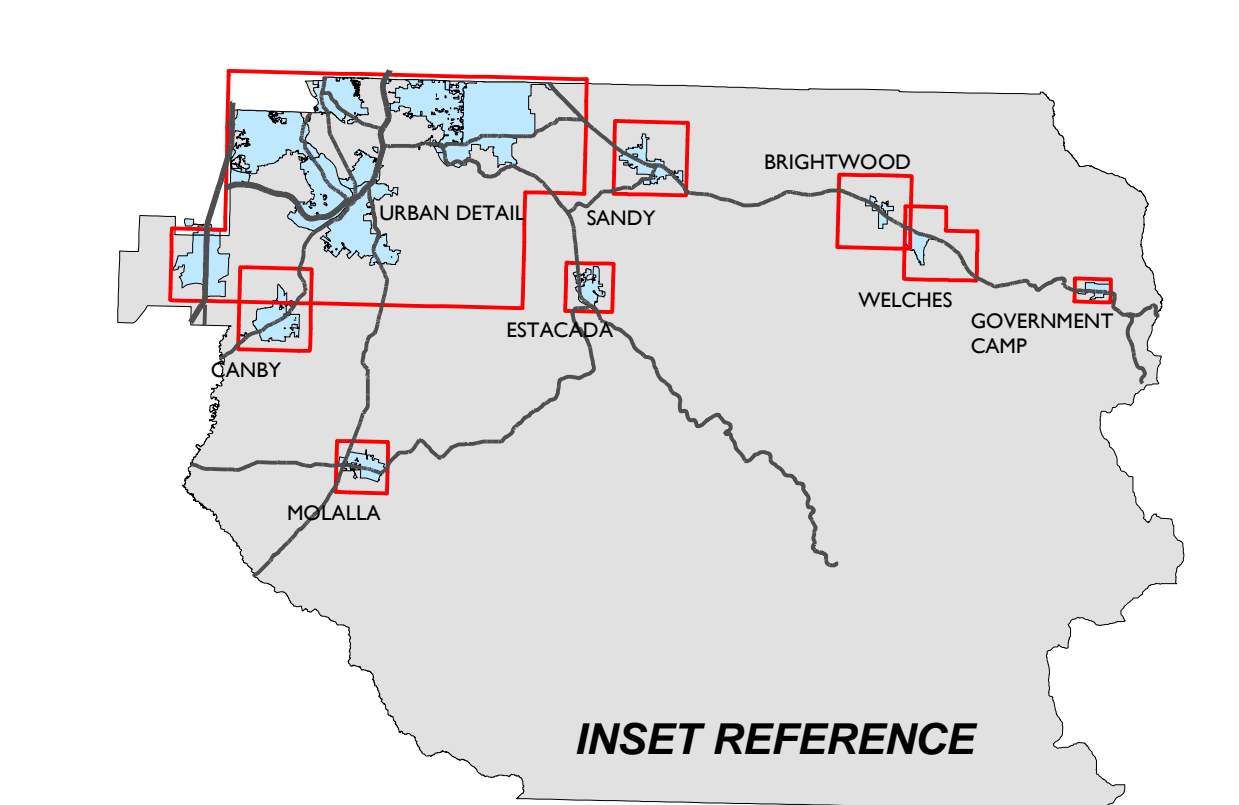
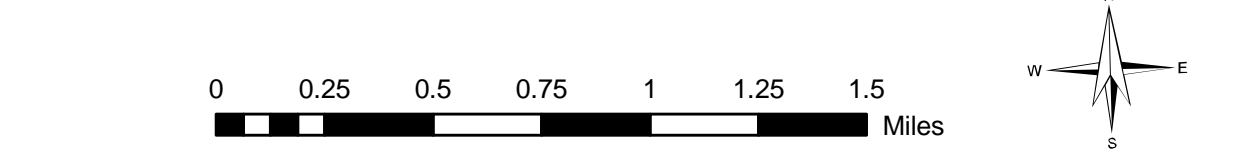
COMPREHENSIVE OPPORTUNITY MAP CLACKAMAS COUNTY



Clackamas County Opportunity Scores - Methodology

Category	Weight	Indicator	Relative Weight
Education	1/5	33% Average ODE Report Card Score (Elementary, Middle, High)	1
		33% Proximity to Elementary & Secondary Schools	
		33% Proximity to Adult Education Resources	
Economic	1/5	66% Density (by number & size of firms) of higher-wage industries in 1-mile radius	1
		33% Density (by number & size of firms) of lower-wage industries in 1-mile radius	
Health Care	1/5	100% Proximity to Health Care Providers	1
		• Primary Care Clinics accepting Oregon Health Plan (OHP)	
		• General Medical and Surgical Hospitals	
Transportation	1/5	100% Proximity to Transit	1
		• Light Rail Stops and Transit Centers	
		• High Service Bus Stops (over 80 buses/day)	
Community	1/5	33% Proximity to Parks	1
		33% Proximity to Food Sources (except convenience stores)	
		33% Proximity to other Community Resources	

Comprehensive Opportunity Scores:
Comprehensive opportunity scores from 1 to 100 were calculated from the average of the five scores.



CLACKAMAS COUNTY
GEOGRAPHIC INFORMATION SYSTEMS
DEPARTMENT OF INFORMATION SERVICES/GEOSPATIAL INFORMATION SYSTEMS
101 LIBRARY COURT
OREGON CITY, OREGON 97143

MAP CREATED OCTOBER 2011

