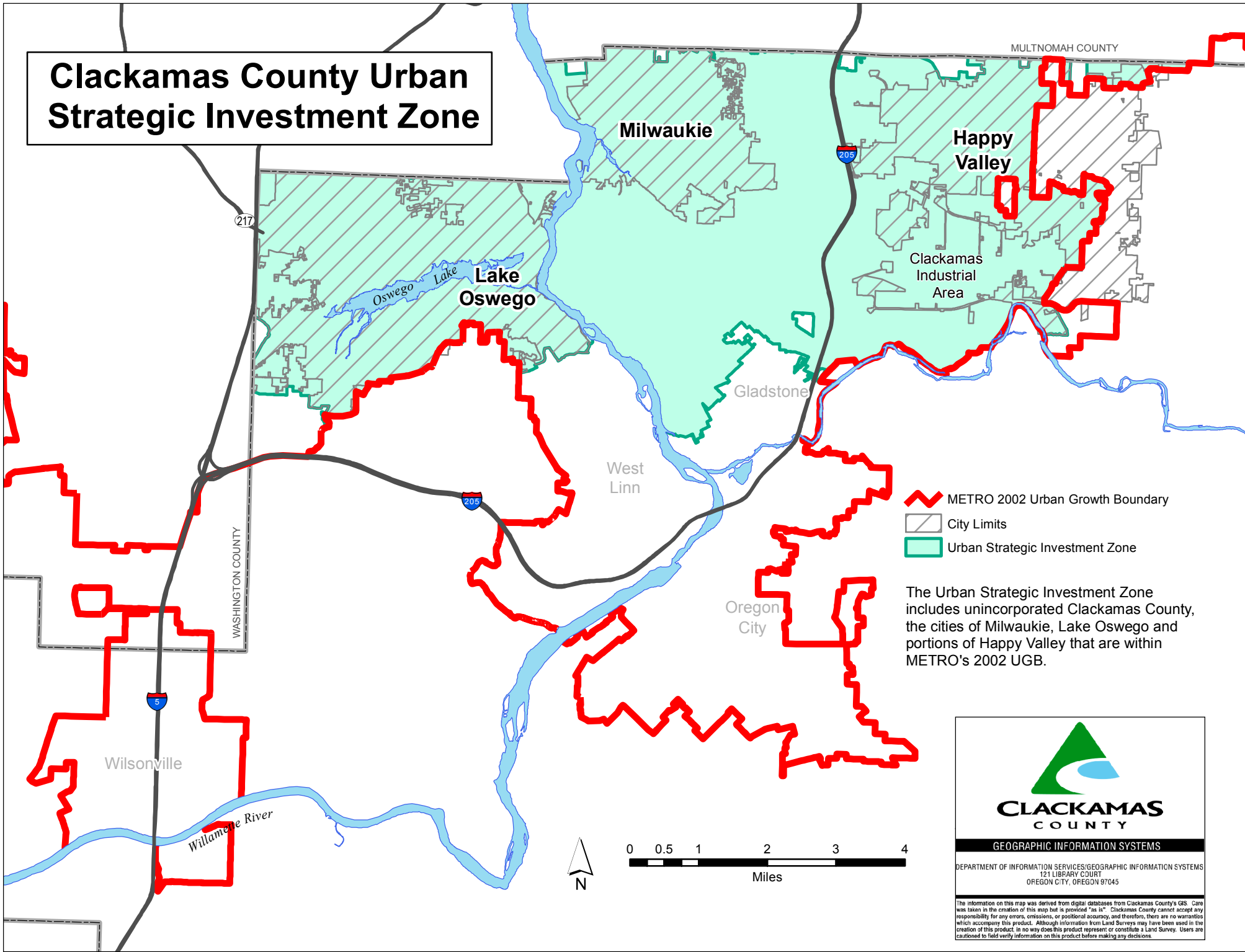






Clackamas County Urban Strategic Investment Zone



-  METRO 2002 Urban Growth Boundary
-  City Limits
-  Urban Strategic Investment Zone

The Urban Strategic Investment Zone includes unincorporated Clackamas County, the cities of Milwaukie, Lake Oswego and portions of Happy Valley that are within METRO's 2002 UGB.



CLACKAMAS COUNTY

GEOGRAPHIC INFORMATION SYSTEMS

DEPARTMENT OF INFORMATION SERVICES/GEOGRAPHIC INFORMATION SYSTEMS
121 LIBRARY COURT
OREGON CITY, OREGON 97045



The information on this map was derived from digital databases from Clackamas County's GIS. Care was taken in the creation of this map but is provided "as is". Clackamas County cannot accept any responsibility for any errors, omissions, or positional accuracy, and therefore, there are no warranties which accompany this product. Although information from Land Surveys may have been used in the creation of this product, in no way does this product represent or constitute a Land Survey. Users are cautioned to field verify information on this product before making any decisions.