

CLACKAMAS COUNTY BOARD OF COUNTY COMMISSIONERS
Study Session Worksheet

Presentation Date: April 7, 2015 **Start Time:** 10:00 am **Approx. Length:** 30 min.

Presentation Title: Port of Portland Update on Terminal 6

Departments: Public & Government Affairs, Business & Community Services

Presenters: Gary Schmidt, Public and Government Affairs; Greg Borossay, Senior Manager, Trade & Cargo Development, the Port of Portland

Other Invitees: Gary Barth, Business and Community Services Director

WHAT ACTION ARE YOU REQUESTING FROM THE BOARD?

None at this time. This is an informational update on Terminal 6 (T-6) service at the Port of Portland and the steps being taken to support Oregon shippers' access to global markets.

EXECUTIVE SUMMARY:

The Port of Portland has been sharing information with the public about the impacts of Hanjin Shipping's withdrawal from the Port's Terminal 6 (T-6) on businesses in Clackamas County, the region, and the state. There are concerns that Hanjin's pullout on March 9, following years of disputes between the International Longshore and Warehouse Union (ILWU) and container-terminal operator ICTSI Oregon, could create devastating, long-term consequences for businesses in the region that rely on import/export services.

In addition to generating \$83 million dollars each year, Hanjin Shipping accounted for nearly 80% of the business at T-6 while moving 1,600 containers per week, including most of Oregon's agricultural exports to Asia. Hanjin also imported goods for many regionally-based companies like Nike and Columbia Sportswear. According to the Port of Portland, Hanjin's business supported approximately 660 jobs that paid out \$33 million in wages every year, which translated to about \$225,000 in longshore pay on a weekly basis.

Without Hanjin's services, international container trade with critical markets must now be routed through other ports, which is already negatively affecting businesses in Clackamas County, like the Fred Meyer Distribution Center in Clackamas and Shimadzu USA in Canby. Attached is a list of businesses in Clackamas, Multnomah and Washington Counties that rely on import/export services.

Today, a representative of the Port will share an update on impacts to the region and steps the Port is taking to support Oregon shippers' access to global markets.

FINANCIAL IMPLICATIONS (current year and ongoing):

N/A

LEGAL/POLICY REQUIREMENTS:

N/A

PUBLIC/GOVERNMENTAL PARTICIPATION:

N/A

OPTIONS:

N/A

RECOMMENDATION:

N/A

ATTACHMENTS:

- Terminal 6 Container Service Power Point
- Data for three-county Metro area on international containerized trade from *The Journal of Commerce, 2014 Port import Export Reporting Service Data*

SUBMITTED BY:

Division Director/Head Approval _____

Department Director/Head Approval ___s/Gary Schmidt___

County Administrator Approval _____

For information on this issue or copies of attachments, please contact Gary Schmidt @ 503-742-5908

Terminal 6 Container Service

Clackamas County Board of Commissioners
April 7, 2015



Marine Terminals – The Region’s Gateway

- 4 marine terminals on the Columbia and Willamette Rivers
- 2 rail lines, upriver barge system, and 2 major interstate highways
- 43-foot channel deepening completed in 2010



Current Situation

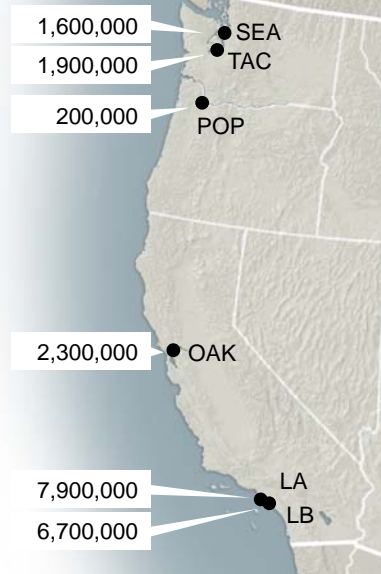
- Over two years of labor-management tension with ILWU and ICTSI (Terminal 6 container operator)
 - Multiple interventions to address reduced productivity
- Hanjin announced withdrawal of Terminal 6 container service effective early March 2015
- West Coast labor agreement reached on February 20, 2015
- ICTSI and the Port are determined to keep remaining container carriers
 - Westwood and Hapag-Lloyd
- Other Port marine terminals are open and active
 - Bulk minerals, grain, autos, and steel



West Coast Market

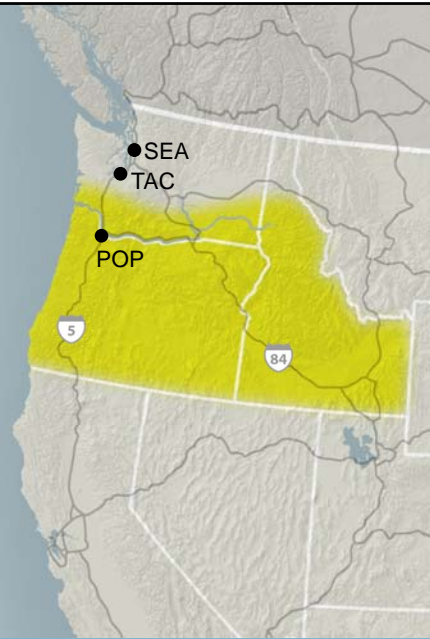
- Over 20 million TEUs moved through the 6 ports that handle containers on the U.S. West Coast
 - \$450 billion in international trade
- Most container trade at West Coast ports links with ports in Asia
 - 80% of Portland's container business is trade with Asia

2013 TEU Total



Portland Cargo Market

- Annual cargo volume in the cargo multi-region capture region is about 350,000 TEUs
 - Currently about half of this volume moves through T-6
 - Most common reason for leakage cargo is lack of direct weekly service capacity to markets such as Japan, S. China, Taiwan, S. Asia, W. Asia and Middle East



Hanjin Service - Asia



- Cosco, K-Line, Yang Ming, Hanjin with Evergreen (2014) (Hanjin operated service since 1993)
- Represents 79% of containers handled at Terminal 6
- Weekly vessel calls

Hapag-Lloyd Service – S. America/Europe



Westwood Service – Asia



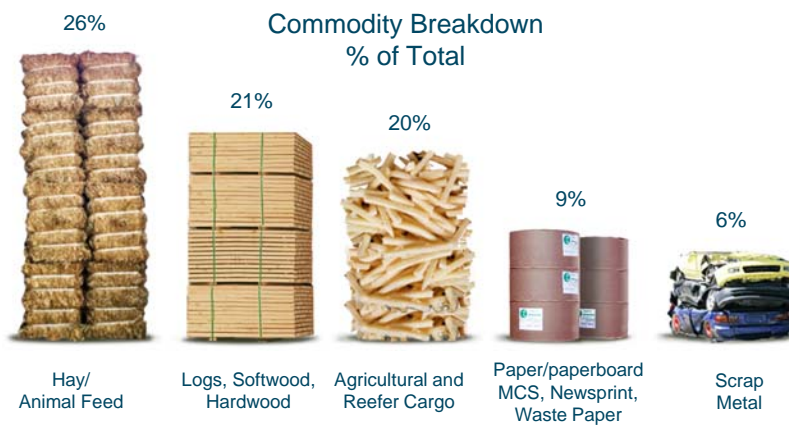
Portland's Asian Containerized Imports

Local Eastbound Commodities, 2013



Portland's Asian Containerized Exports

Local Westbound Commodities, 2013

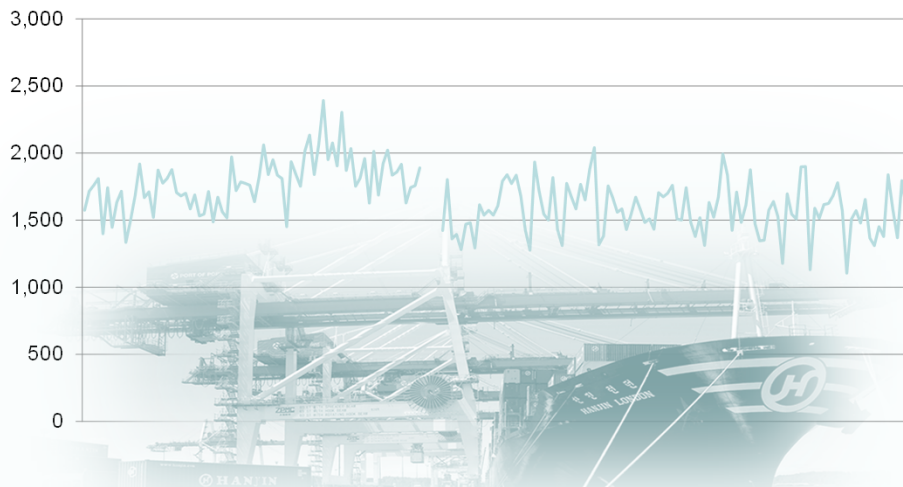


88% of Oregon exporters are small and medium-sized businesses

Metro Region International Containerized Trade

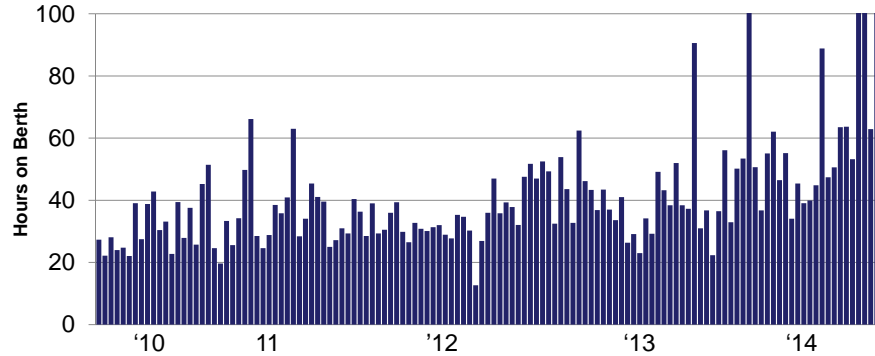
County	Cities	# of Shippers	# of Exports	# of Imports	Total
Clackamas	Canby, Damascus, Estacada, Gladstone, Happy Valley, Lake Oswego, Milwaukie, Molalla, Oregon City, Portland, Tualatin, West Linn, Wilsonville	241	1,110	5,074	6,184
Multnomah	Fairview, Gresham, Portland, Troutdale, Wood Village	767	27,479	19,286	46,765
Washington	Banks, Beaverton, Cornelius, Forest Grove, Hillsboro, North Plains, Tigard	218	2,084	3,605	5,689
TOTAL		1,226	30,673	27,965	58,638

Container Volumes Remain Strong (Hanjin volumes 2011– mid 2013)



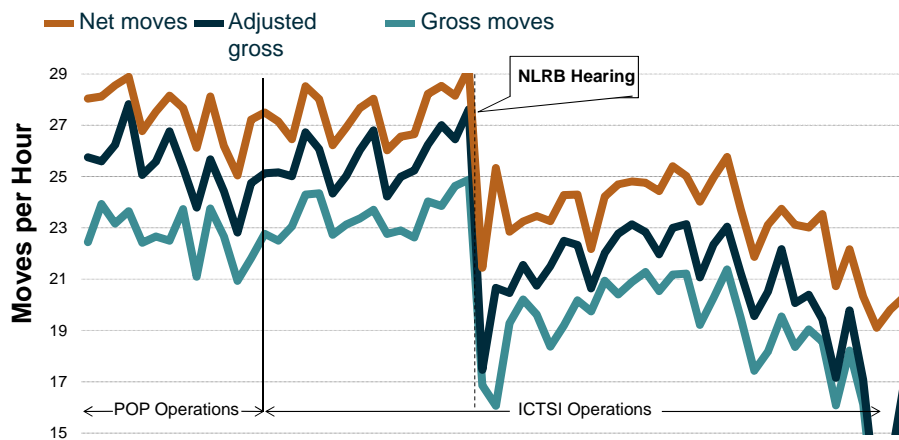
Hanjin Vessel Time in Port (2010-Jan 2015)

- Nearly 250 Hanjin vessel calls in past 5 years
- 2010/2011 avg. time = 36 hours, last 12 months = 66 hours
- Three of last four vessels with berth times over 150 hours



Terminal 6 Average Monthly Crane Productivity

All Vessels, Jan. 2010 – Jan 2015



Two Overlapping Labor Issues

1. Ongoing Labor - Management dispute at Terminal 6
 - Ongoing since mid-2012 between ILWU and ICTSI
 - The issues have been considered in arbitration, in National Labor Relations Board and in federal court.
 - While rulings have gone in the favor of management, nothing has returned to normal.
2. Coastwise contract negotiations
 - ILWU working without a contract since July 1, 2014.
 - Tentative West Coast labor agreement reached February 20, 2015.
 - Lack of grievance procedure and arbitration process has exacerbated tensions at Terminal 6.
 - Up to 3 months to address backlog along the West Coast.

Port Response

- Engaged ILWU – ICTSI – Governor to encourage resolution
- Developed a vessel incentive program in 2012 to induce carriers who had been skipping to come back
- Put rent-rebate program in place in 2013 to reduce terminal rates
- Put a carrier incentive program in place in 2014 and again 2015
- Total package approx. \$14 million



The Challenge – Port and Statewide Concern

- Loss of service and loss of access to international markets
- Significant impacts to shippers and producers in our region
- Threat to the sustainability of remaining services (Hapag-Lloyd, Westwood, Columbia-Snake River Barges)
- Significant impacts to service providers
- Lost wages, business revenue, and taxes to our community
- Erosion of the benefits that have taken years to build-up



Immediate Steps - Port

1. Support existing carriers and service for regional shippers through Terminal 6
 - Carrier incentive program
2. Provide resources and information to shippers to move commodities to market
3. Improve reliability and availability of Terminal 6 equipment for calling carriers
 - Crane maintenance program
4. Collaborate with state and regional economic development partners
 - Interim freight/logistics solutions



Collaborative Strategy

- Demonstrate fundamental strength of cargo market and logistics infrastructure
- Develop interim solutions for large, medium and small size shippers
 - Large shippers – implemented contingency plans
 - Medium and small shippers – reliant on freight logistic providers, additional transport costs burdensome
- Recruit new carriers to serve Asian market
 - Over 40 transpacific services calling the US West Coast
 - Work with the shipper community to develop new cargo commitments and incentives to take to carriers

Questions

Greg Borossay, Trade and Cargo Development
503/415-6012 - greg.borossay@portofportland.com

Rob Smith, Business Development Regional Cargo Marketing
503/415-6218 – rob.smith@portofportland.com

Clackamas County International Containerized Trade by Company

2014 Calendar Year -- In number of containers

Source: Journal of Commerce, 2014 Port Import Export Reporting Service

Note: PIERS data does not include Oregon shippers that requested their names be withheld. Some Oregon businesses ship through third parties (e.g., forwarders, consolidators, distributors, and cooperatives). In these instances, the shippers of record may be from another county than the origin of the product being exported.

Clackamas					
City	Company	# of Shippers	Export	Import	Total
CANBY	GRIZZLY GRILLZ			5	5
	LIQUIDART			1	1
	PACIFIC RIM VENTURES			8	8
	PIONEER PUMP			132	132
	PROACTIVE SPORTS			105	105
	ROSE AGRI SEED			1	1
	S R SMITH			16	16
	SHIMADZU USA MANUFACTURING			45	45
	SMS AUTO FABRICS			3	3
	SWAN ISLAND DAHLIAS			1	1
	TERRA NOVA NURSERIES			13	13
	WESTERN FIREWORKS			6	6
	WILLAMETTE EGG FARMS			43	43
CANBY Total		13		379	379
DAMASCUS	NW AG AND AGENTS			2	2
DAMASCUS Total		1		2	2
ESTACADA	ANTINA S DOLL SUPPLIES			2	2
	DGI WORLDWIDE			1	1
	MPG TRIKES			1	1
ESTACADA Total		3		4	4
GLADSTONE	IQ NATURAL			1	1
	MILKY WAY TEA AND PASTRY			2	2
GLADSTONE Total		2		3	3
HAPPY VALLEY	BUZON USA WEST			2	2
	NW INVESTMENT ENTERPRISE		2		2
	QXAK			2	2
	SUSHIVILLE			1	1
HAPPY VALLEY Total		4	2	5	7
LAKE OSWEGO	AARON JUSTIN BROWN			1	1
	ALLY GLOBAL LOGISTICS		27		27
	ALPHACHEM			2	2
	AOSOM			152	152
	ASIA PACIFIC TRADING		109		109
	AUDIO DEUTCHKRAFT			2	2
	BARKAL JUDY LYNNE			1	1
	BLUESTEEL SERVICES			4	4
	BRAVO INTERNATIONAL			2	2
	BRIGGS FAMILY ENT			1	1
	CASCADE PRODUCTS INTERNATIONAL			7	7
	CASEY SEAN			1	1
	CELLMARK		6		6
	CHINOOK ASIA			61	61
	CRADLEBABY			2	2
	EXILE AUDIO			1	1
	GLM ENTERPRISES			1	1
HALFEN WOOD SPECIALITIES			19	19	

Clackamas County International Containerized Trade by Company
2014 Calendar Year -- In number of containers

Source: Journal of Commerce, 2014 Port Import Export Reporting Service

Note: PERS data does not include Oregon shippers that requested their names be withheld. Some Oregon businesses ship through third parties (e.g., forwarders, consolidators, distributors, and cooperatives). In these instances, the shippers of record may be from another county than the origin of the product being exported.

Clackamas					
City	Company	# of Shippers	Export	Import	Total
	ICTSI OREGON		36		36
	IPT			48	48
	JAE SANG			1	1
	JERED MICHAEL STOEHR			2	2
	JIM SMITH KYWA INTERNATIONAL GROUP			1	1
	KOOLSTOP INTERNATIONAL			2	2
	KYWA INTERNATIONAL GROUP			275	275
	LAKE FOREST PRODUCTS			1	1
	LAKE OSWEGO CARE HOME			2	2
	LD IMPORTS			1	1
	LIGHTSPEED AVIATION			14	14
	MONJE FOREST PRODUCTS		4		4
	MORII FOODS			30	30
	MRS NANCY MARIE MAAG			1	1
	MS KRISTA MARIE BLOVAD			1	1
	NORTHWEST STAPLE SUPPLY			13	13
	OAKCETERA			4	4
	OREGON LUMBER			9	9
	OSWEGO ENTERPRISES			2	2
	PACIFIC WAY			14	14
	PARSONS		4		4
	POPP FOREST PRODUCTS		10	33	43
	POWERLINEEQUIPMENT SPECIALISTS			3	3
	PROSOURCE BAG			11	11
	ROBERT JON TOPOL			1	1
	SIMON JAMES PESTRIDGE			1	1
	SKYLINE NORTHWEST			1	1
	SUMITOMO OF AMERICA			7	7
	SUNSET TRADING		577		577
	TAIWAN GLASS USA SALES			8	8
	TREESMART INDUSTRIES			2	2
	WOOD BROKERAGE INTERNATIONAL			324	324
LAKE OSWEGO Total					
MILWAUKIE		50	793	1051	1844
	ALPINE FOOD DISTRIBUTIVE RESOU			2	2
	AMERICAN WAREHOUSE			4	4
	BAGGALLINI			3	3
	BOB S RED MILL			1	1
	C R BROPHY MACHINE WORKS			24	24
	DARK HORSE COMICS			48	48
	DEVLON NORTHWEST COMPANY			15	15
	DOMETIC			12	12
	GRAND AND BENEDICTS			54	54
	HFT INTERNATIONAL		34	3	37
	HORIZON EXPRESS			1	1
	INFORMAL EDUCATION PRODUCTS			1	1

Clackamas County International Containerized Trade by Company

2014 Calendar Year -- In number of containers

Source: Journal of Commerce, 2014 Port Import Export Reporting Service

Note: PERS data does not include Oregon shippers that requested their names be withheld. Some Oregon businesses ship through third parties (e.g., forwarders, consolidators, distributors, and cooperatives). In these instances, the shippers of record may be from another county than the origin of the product being exported.

Clackamas					
City	Company	# of Shippers	Export	Import	Total
	LOVE ENGRAVING			1	1
	MARY JANE SKELTON			1	1
	MR FLAME			1	1
	MUTUAL WHOLESALE LIQUOR			13	13
	NORTHWEST ELECTRONICS			32	32
	DISTRIBUTING			38	38
	OREGON TRANSFER			3	3
	PCC STRUCTURALS			83	83
	STANLEY HYDRAULIC TOOLS				
MILWAUKIE Total		20	34	340	374
MOLALLA	BRENTWOOD			5	5
	J AND J FOREST PRODUCTS			7	7
	OREGON EVERGREEN INTERNATIONAL		47		47
MOLALLA Total		3	47	12	59
OREGON CITY	BENCHMADE KNIFE			6	6
	EMPIRE PACIFIC			21	21
	ERIK STEVEN HANSON			1	1
	HAOQIAN LIU ADVANCED			1	1
	IKEA			2	2
	J S INTERNATIONAL			16	16
	JINK SYSTEMS			1	1
	LEA JANELLE FORSMAN			1	1
	LIBERTY NATURAL PRODUCTS			6	6
	MR TRUC THANH PHAM			1	1
	SHAUN MAUREEN HOUSTON			1	1
OREGON CITY Total		11		57	57
PORTALND	TRANS PACIFIC TARDING US		14		14
PORTALND Total		1	14		14
TUALATIN	ADVANCED COLOR SYSTEMS		6		6
	ALLOY AND STAINLESS FASTENERS			1	1
	ANA INTERNATIONAL			4	4
	ANTHRO			9	9
	API INTERNATIONAL			14	14
	BALI HOME FURNISHINGS			3	3
	BOUYOUD DISTRIBUTION			3	3
	BRIDGEPORT TIMBER EXPORTS		7		7
	CASSIDA			26	26
	CIU			1	1
	COLUMBIA RIVER KNIFE AND TL			18	18
	CONSIGNED TO PACIFIC CARGO				
	CONTROL			13	13
	CONSTRUCTION EQUIPMENT PARTS			18	18
	COOPERATIONS			4	4
	CREATIVE WASTE SOLUTIONS			19	19
	CUI			280	280

Clackamas County International Containerized Trade by Company
2014 Calendar Year -- In number of containers

Source: Journal of Commerce, 2014 Port Import Export Reporting Service

Note: PIERS data does not include Oregon shippers that requested their names be withheld. Some Oregon businesses ship through third parties (e.g., forwarders, consolidators, distributors, and cooperatives). In these instances, the shippers of record may be from another county than the origin of the product being exported.

Clackamas

City	Company	# of Shippers	Export	Import	Total
	DECOR MANUFACTURING			12	12
	ELEMAR OREGON			128	128
	FUJIMI		8	207	215
	G B II GROUP			12	12
	GRAND NORTHERN PORTLAN WHSA			3	3
	GRIFFITH POLYMERS			2	2
	HARDWOOD INDUSTRIES			7	7
	HARTMAN FORBES			4	4
	HC DISTRIBUTION			1	1
	HOLJERON			21	21
	HOSE AND SUPPLY WAREHOUSE			3	3
	HUNTAIR			3	3
	HYDROPHOTON			9	9
	ICHOR SYSTEMS			22	22
	J K P SPORTS			65	65
	JAE OREGON			42	42
	JAVELIN LOGISTICS			1	1
	JORDAN ENGLAND			2	2
	JUGS			7	7
	KAI USA		1	1	2
	KAYU INTERNATIONAL			12	12
	KEY KNIFE			19	19
	LANE		1		1
	LAZBOY FURNITURE			17	17
	LEAVITT INTERNATIONAL			5	5
	LIGHTSPEED TECHNOLOGIES			1	1
	MARINE LUMBER			52	52
	MR CHEN CHENG YANG			1	1
	MWT FOODS USA		12	3	15
	NORTHWEST FASTENER SALES			21	21
	NWI INTERNATIONAL			8	8
	PACIFIC CARGO CONTROL			147	147
	PACIFIC CORNETA			2	2
	PACIFIC FOODS OF OREGON			1	1
	PACIFIC INDUSTRIES			31	31
	PACIFIC MOTION			60	60
	PARAMOUNT BEDDING			9	9
	PIONEER PACKAGING			10	10
	PORTLAND CHAIN MANUFACTURING			2	2
	POWIN			51	51
	PREMIER LIFT TRUCK			2	2
	PREMIER PAINT ROLLER				
	MANUFACTURING			38	38
	PURR FECTION BY MJC			9	9
	SAWSTOP			7	7
	SHIRTS AND SKINS			13	13

Clackamas County International Containerized Trade by Company
2014 Calendar Year -- In number of containers

Source: Journal of Commerce, 2014 Port Import Export Reporting Service

Note: PERS data does not include Oregon shippers that requested their names be withheld. Some Oregon businesses ship through third parties (e.g., forwarders, consolidators, distributors, and cooperatives). In these instances, the shippers of record may be from another county than the origin of the product being exported.

Clackamas					
City	Company	# of Shippers	Export	Import	Total
	SINGAPOREMATHCOM			23	23
	SOLAR CAPITAL			3	3
	SPRING CREEK SALES			3	3
	STRATEGIC PRINTING AND MANUFACTURIN			2	2
	TEAM MARKETING			1	1
	TUALATIN SLEEP PRODUCTS			17	17
	VERIS INDUSTRIES			28	28
	WADE RAIN			19	19
	WAGNER SMITH EQUIPMENT			1	1
	Y KNOT BRANDED			1	1
TUALATIN Total		73	35	1584	1619
WEST LINN	BIRDHOUSE SPY CAM			1	1
	CHAIRKID NORHT AMERICA			2	2
	MILKY WAY TEA AND PASTRY			5	5
	ONPOINT ILLUMINATION INC			3	3
	WALSH INDUSTRIES			63	63
WEST LINN Total		5	63	11	74
WILSONVILLE	AB MAURI			2	2
	ACCENT MARKETING GROUP			3	3
	ALDIS MANACTURING			28	28
	AUDIX USA			23	23
	AXIA DISTRIUBTION			3	3
	BEDMART			1	1
	BIODEGRADABLE FOOD SERVICE			6	6
	CASCADE FRUIT MARKETING		1	30	31
	COLUMBIA RIVER KNIFE AND TOOL			11	11
	COMEUP USA			3	3
	DAITRON			1	1
	DC INTERNATIONAL			21	21
	EXPERIENCE IN DESIGN			1	1
	FOOD GUYS			32	32
	FUJIMI			2	2
	GRAVITY INTERNATIONAL			3	3
	GW INDUSTRIES			57	57
	HARTUNG GLASS INDUSTRIES			15	15
	HENDRIX NIMAKO		2		2
	HOFFMEYER			23	23
	HOUSTONS			16	16
	INTERCOM PACKAGING USA			36	36
	INTERNATIONAL MILLWORK			17	17
	JACKSON PACIFIC			30	30
	KEYSTONE AUTOMOTIVE INDUSTRIES			8	8
	KIRKLAND ASSOCIATES			1	1
	LIFELINE FIRST AID			66	66
	MS AB MAURI INDIA INDIA PRIVATE			6	6

**Clackamas County International Containerized Trade by Company
2014 Calendar Year -- In number of containers**

Source: Journal of Commerce, 2014 Port Import Export Reporting Service

Note: PIERS data does not include Oregon shippers that requested their names be withheld. Some Oregon businesses ship through third parties (e.g., forwarders, consolidators, distributors, and cooperatives). In these instances, the shippers of record may be from another county than the origin of the product being exported.

Clackamas					
City	Company	# of Shippers	Export	Import	Total
	NTP DISTRIBUTION			1	1
	OFFICE SUPPORT SYSTEMS			1	1
	OREPAC HOLDING COMPANY			50	50
	PARVATHY MANAPADAM				
	SANKARANARAYANAN			1	1
	PINE MEADOW GOLF PRODUCTS			1	1
	PRECISION COUNTERTOPS			23	23
	PRECISION INTERCONNECT			74	74
	RINGOR CLASSICS			9	9
	RITTER CHEMICAL			15	15
	ROCKMORE INTERNATIONAL			21	21
	RON TONKIN GRAN TURISMO			1	1
	SIERRA PACIFIC CRAFTS COOPERATIVE			167	167
	SIXIN NORTH AMERICA			1	1
	SOUTHERN W AND S DIST OF OREGON			21	21
	SSI SHREDDING SYSTEMS			1	1
	SWS OREGON			125	125
	TE CONNECTIVITYMEDICAL BUSINESS			1	1
	THE BETTER BEANS			2	2
	TIGER DECK			10	10
	TRAEGER PELLET GRILLS			448	448
	UPPER COLUMBIA MILL		119		119
	VISION PLASTICS			4	4
	WELLMADE FLOOR			168	168
	WORLDCHEM			2	2
	XEROX OFFICE GROUP			24	24
	XZERES WIND			3	3
	ZEPAK			7	7
WILSONVILLE Total		55	122	1626	1748
Grand Total		241	1110	5074	6184

Washington County International Containerized Trade by Company

2014 Calendar Year -- In number of containers

Source: Journal of Commerce, 2014 Port Import Export Reporting Service

Note: PERS data does not include Oregon shippers that requested their names be withheld. Some Oregon businesses ship through third parties (e.g., forwarders, consolidators, distributors, and cooperatives). In these instances, the shippers of record may be from another county than the origin of the product being exported.

Washington					
City	Name	# of Shippers	Export	Import	Total
BANKS	A Z WEST		2		2
BANKS Total		1	2		2
BEAVERTON	ABOU ELMAJD AND YAHYA TRADING			4	4
	AIR DELIGHTS			1	1
	AMERICAN INTERNATIONAL FOREST PRODU			6	6
	ANDREW THOMAS DILLON			1	1
	ASIA SOURCES			5	5
	BEAVERTON KITCHEN CABINET AND STONE			32	32
	BEGO CANADA			1	1
	BIAMP SYSTEMS			16	16
	BRODIE KLEMM			1	1
	C2F			112	112
	CHANG MENG CHEN			1	1
	CLASSIC CONSTRUCTION			3	3
	CNC			1	1
	COMPUTER TECHNOLOGY LINK			19	19
	DAYLEE FOODS		1		1
	DOUG HYUN CHOO			2	2
	E BUSINESS INTERNATIONAL			2	2
	EARL AND BROWN			14	14
	EARTH CLASS MAIL			2	2
	ELBOWFISH			1	1
	FLORA USA			1	1
	FREDRIC ALGALARRONDO			1	1
	FULFILLMENT AMERICA			1	1
	FURRION			34	34
	GENERIC PARTS SERVICE			5	5
	GLOBAL BUBBLE TEA			1	1
	GM NAMEPLATE			4	4
	GPS			2	2
	GRAPHIC PRODUCTS			16	16
	GUAVAKIDS			2	2
	HAO SEN CALENDAR			1	1
	HAWAIIAN ROYAL TRADING			1	1
	IKE TRADING		400	1	1
	INTEGRITY DIRECT FURNITURE			148	548
	IRENE IMMINK			6	6
	KEY HOME FURNISHING			1	1
	LEES MEASURING AND MACHING			3	3
	LEUPOLD AND STEVENS			2	2
	LOLICH S FAMILY FARM			7	7
	LOLICH S FAMILY FARM			1	1
	MAX GIFT INTERNATIONAL			9	9
	MMEGA			1	1
	MODO			23	23
	MR JUNICHIRO TSUJINO			1	1

Washington County International Containerized Trade by Company

2014 Calendar Year -- In number of containers

Source: Journal of Commerce, 2014 Port Import Export Reporting Service

Note: PERS data does not include Oregon shippers that requested their names be withheld. Some Oregon businesses ship through third parties (e.g., forwarders, consolidators, distributors, and cooperatives). In these instances, the shippers of record may be from another county than the origin of the product being exported.

MR KAWABE KATSUHIKO		1	1
MR KIM JEONGRYUL		2	2
MR KOSHIMIZU KAZUHIKO		1	1
MR KUNIO CHO		1	1
MR MATSUZAKI KOICHI		1	1
MR NAGAMATSU TATSUYA		1	1
MR OKA HIRONORI		1	1
MR TANAKA YOSHIO		1	1
MRTAKENAKA MASASHI		1	1
NIKE USA		44	44
NORTHWEST HARDWOODS	348		348
PACIFIC NORTHWEST	12		12
PANZER NURSERY		6	6
PLANAR SYSTEMS		232	232
PLATT ELECTRIC SUPPLY		3	3
PLUS VISION OF AMERICA		14	14
PRIME FOREST PRODUCTS	15		15
QUALITY COMPONENT SUPPLY AND MANUFA		2	2
REXEL PLATT ELECTRIC SUPPLY		4	4
RHD VEHICLES		7	7
RICE STUDIO SUPPLY		1	1
SAFEGUARD		98	98
SINO AMERICAN IMPORTS AND EXPORTS C		1	1
SIX MOON DESIGNS		2	2
STANDARD MULTIWALL BAG MANUFACTURIN		45	45
STONEGROUNDED		1	1
SUSTAINABLE SOLUTIONS INTERNATIONAL		6	6
SW NIMBUS AVENUE SUITE A	3		3
SWAGAT INDIAN CUISINE		1	1
TAKE FLIGHT		1	1
TECHNICAL SALES SOLUTIONS		1	1
TEKTRONIX CHINA		149	149
TEST PRODUCTS INTERNATIONAL		13	13
TRIAx METAL PRODUCTS		2	2
UNITED PACIFIC COMPANY		2	2
VICKILANE CREATIVE DESIGN		1	1
VIRTUAL SUPPLY EARL AND BROWN		2	2
WEI WEI		1	1
WISH PETS		58	58
WISS		3	3
YAKIMA PRODUCTS		2	2
Z TILE AND STONE		1	1
ZEN RAY OPTICS		2	2
BEAVERTON Total	86	780	1210
CORNELIUS			1990
CHINROSE INTERNATIONAL		7	7

Washington County International Containerized Trade by Company

2014 Calendar Year -- In number of containers

Source: Journal of Commerce, 2014 Port Import Export Reporting Service

Note: PERS data does not include Oregon shippers that requested their names be withheld. Some Oregon businesses ship through third parties (e.g., forwarders, consolidators, distributors, and cooperatives). In these instances, the shippers of record may be from another county than the origin of the product being exported.

	HAZELNUT GROWERS OF OREGON		19		19
	INDUS TRADING			1	1
	ROSE HILL ENTERPRISES			5	5
	SHELDON MANUFACTURING			2	2
CORNELIUS Total		5	19	15	34
FOREST GROVE	CRANE POINT INDUSTRIAL			1	1
	ENGLE DENTAL SYSTEMS			5	5
	GARDIEN SERVICES USA			2	2
	INSERTA FITTINGS			3	3
	NEW SEASON FOODS			2	2
	SAKEONE			33	33
	SEASON HARVEST FOODS			1	1
FOREST GROVE Total		7		47	47
HILLSBORO	AGC ELECTRONICS AMERICA			18	18
	AUTHORITY MEDICAL GROUP			2	2
	AVERNA DUDECK			9	9
	BADRINATH SRINIVASA RAO			1	1
	BEAVERTON FOODS			1	1
	BUDDIPOLE			1	1
	CAROLINE WING YEE LEW WOLF			1	1
	CARTER CUTLERY			1	1
	CASCADE INTERNATIONAL FOODS			1	1
	CASCADE WHOLESALE		19	8	27
	CERUS INDUSTRIAL			1	1
	CHRIS PRODUCTS			1	1
	CLEAREDGE POWER			22	22
	DAVE SHEPARD ENTERPRISES			1	1
	DAVIS TOOL			1	1
	DELTA PRODUCTS			1	1
	DENFELD ORCHARDS			4	4
	DHL GLOBAL FORWARDING		2		2
	EDUARDO JOSE BOLA OS PERALTA			5	5
	EPSON PORTLAND			1	1
	ETOP		134	177	311
	EXPORT GLOBAL			1	1
	FOREST DENTAL PRODUCTS		1		1
	FOUR RIDGE ORCHARDS			15	15
	GENENTECH		1		1
	GERMAN QUESADA GONZALEZ			1	1
	GOLDEN WEST MARKETING			1	1
	HOFFMAN CONSTRUCTION			23	23
	IGNACIO JAVIER ALVAREZ MARTINEZ			1	1
	INABATA AMERICA			1	1
	IT S WELL EXPORT			10	10
	IWASAKI BROTHERS		3		3
	J R FURNITURE HILLSBORO OR			2	2
	JINXIANG LIANG			2	2
	JR FURNITURE USA			1	1
	LAUFER GROUP INTERNATIONAL			9	9
			3		3

Washington County International Containerized Trade by Company

2014 Calendar Year -- In number of containers

Source: Journal of Commerce, 2014 Port Import Export Reporting Service

Note: PERS data does not include Oregon shippers that requested their names be withheld. Some Oregon businesses ship through third parties (e.g., forwarders, consolidators, distributors, and cooperatives). In these instances, the shippers of record may be from another county than the origin of the product being exported.

	LENS LINK		15	15
	LIGMAN LIGHTING USA		33	33
	MARTIN RUBENSTEIN		1	1
	MERCHANDISING TECHNOLOGIES		5	5
	MIDAS NURSERY SOLUTIONS		1	1
	MOBILTECH		27	27
	MODO		2	2
	MONSTER CABLE PRODUCTS		11	11
	MR HIGASHITSUTSUMI SHINJI		1	1
	MR KEI HARA		1	1
	MR MATSUOKA TOMONORI		1	1
	MR NAKAGAWA SEIYA		1	1
	MR TOHNOE KAZUHITO		1	1
	MWT FOODS USA	37		37
	N AND T MOLD ENGINEERING		13	13
	NEXPLANAR		1	1
	NORM THOMPSON		3	3
	ORACLE AMERICA		172	172
	OREGON BERRY PACKING	8		8
	OREGON MEMORIALS		25	25
	PACIFIC BRIDGE INTERNATIONAL TRADING	5		5
	PERFORMANCEPRO PUMPS		2	2
	PLANAR SYSTEMS		71	71
	POLI PRO USA		3	3
	RAPTOR RIDGE		1	1
	REIMERS FURNITURE MANUFACTURING		72	72
	RINCHEM COMPANY		1	1
	RODGERS INSTRUMENTS		18	18
	SAHALIE		1	1
	SANDRA ARACELLI OLAY JARDON	1		1
	SEALINK INTERNATIONAL	6		6
	SOLARWORLD INDUSTRIES AMERICA		903	903
	SOURCE GLOBAL		5	5
	SUMMIT SEMICONDUCTOR		1	1
	TEUFEL PRODUCTS COMPANY		8	8
	TOKAI CARBON		2	2
	TOKYO OHKA KOGYO AMERICA		41	41
	TOOLSTREAM CO CASCADE		2	2
	VOX TRADING USA		1	1
HILLSBORO Total		75	221	1768
NORTH PLAINS	INDUSTRIAL PINE PRODUCTS		1	1
	JEWETTCAMERON TRADING COMPANY	2	258	260
	OREGON CANADIAN FOREST PRODUCTS	42	42	84
	PROTOCO ENTERPRISES		1	1
	VNADYKE GRAIN		5	5
	WILBUR ELLIS		12	12
NORTH PLAINS Total		6	44	319

Washington County International Containerized Trade by Company

2014 Calendar Year -- In number of containers

Source: Journal of Commerce, 2014 Port Import Export Reporting Service

Note: PIERS data does not include Oregon shippers that requested their names be withheld. Some Oregon businesses ship through third parties (e.g., forwarders, consolidators, distributors, and cooperatives). In these instances, the shippers of record may be from another county than the origin of the product being exported.

TIGARD	190110 LACIE USA		10	10
	3 POINT BRAND MANAGEMENT		4	4
	ACM ALLIANCE		1	1
	AG SPECIALTIES		2	2
	AMAX		1	1
	ASCARI DESIGNS		13	13
	BCS BATIMENT		4	4
	BRIDGEPORT DISTRIBUTION		1	1
	BRIDGEWELL RESOURCES	259	15	274
	CALDERA INTERNATIONAL		4	4
	COLPAC		4	4
	CRAIG DODSON WIHTOL		1	1
	DIGITAL INFRASTRUCTURES		2	2
	EASYSYNC		2	2
	FUTURE TECHNOLOGY DEVICES		6	6
	GILL BRIAN DANIEL		1	1
	GREATLAND CLASSIC SALES COMPANY IN		1	1
	GREEN COS	755		755
	IRONWOOD PACIFIC		3	3
	JOSE LUIS CLARAMUNT CASO		1	1
	KAYU INTERNATIONAL		35	35
	L AND L INTERNATIONAL	3		3
	L L TNC	1		1
	LIFELINE FIRST AID		1	1
	MATERIAL FLOW AND CONVEYOR			
	SYSTEMS		2	2
	MCKENZIE BUYING COMPANY		37	37
	MULTICRAFT PLASTICS		4	4
	PACIFIC CROSS INTERNATIONAL		21	21
	PACIFIC RECREATIONAL PRODUCTS		1	1
	PAPE MATERIAL HANDLING		2	2
	PLASTIC METAL TECHNOLOGIES		3	3
	POLYCAST		1	1
	RENEGADE SPORTS SURFACING		1	1
	SCRATCHWIZARD		2	2
	STASH TEA		1	1
	TECHNICAL SERVICES FOR ELECTRONICS		6	6
	WESTERN FAMILY FOODS		30	30
	ZENPORT INDUSTRIES		23	23
TIGARD Total		38	1018	246
Grand Total		218	2084	3605

Multnomah County International Containerized Trade by Company

2014 Calendar Year -- In number of containers

Source: Journal of Commerce, 2014 Port Import Export Reporting Service

Note: PERS data does not include Oregon shippers that requested their names be withheld. Some Oregon businesses ship through third parties (e.g., forwarders, consolidators, distributors, and cooperatives). In these instances, the shippers of record may be from another county than the origin of the product being exported.

Multnomah						
City	Company	# of Shippers	Export	Import	Total	
FAIRVIEW	CASCADE			56	56	
	CASCADE COPORATION			1	1	
	CASCADE PDC			2	2	
	CASCADE PORTLAND			51	51	
	CONNOR MANUFACTURING			2	2	
	EMPEROR MUSHROOM			1	1	
	NACCO MATERIALS HANDLING			6	6	
	NAVISTAR PORTLAND			4	4	
	TOWNSEND FARMS			1	29	30
FAIRVIEW Total		9	1	152	153	
GRESHAM	A AND L LO CONSULTING			3	3	
	AMERICHI INTERNATIONAL MARKETING			4	4	
	ARCH FITTERS			5	5	
	BRIDGETOWN BREW SYSTEMS			1	1	
	DOWSON TECHNOLOGIES			5	5	
	EXPORT		128			128
	EXPORTS INTRNATINAL		6			6
	FURNITURE CITY			2		2
	KEN ONYIMA		3			3
	L EXPORT INTERNATINAL		13			13
	MICROCHIP TECHNOLOGY				10	10
	ODOM SOUTHERN DIST OF OREGON				11	11
	ROYAL GATE				2	2
	SCENIC FRUIT COMPANY		7		4	11
	SESTER FARMS				1	1
	SOUTHERN W AND S DIST OF OREGON				5	5
	SOUTHERN WINE DIST OF OREGON				14	14
	TALON HOLDINGS DEVELOPMENT				1	1
	WINDHORSE				2	2
GRESHAM Total		19	157	70	227	
PORTALND	TRANS PACIFIC TARDING US		14		14	
PORTALND Total		1	14		14	
PORTLAND	141 EYEWEAR			1	1	
	A BOY ELECTRIC AND PLUMBING			1	1	
	A C F WEST			53	53	
	AARON RENTS			7	7	
	AARONS S L			1	1	
	AARONS SALES AND LEASE			134	134	
	ABIGAIL A CROFFIE		1			1
	ACCELERATED DEVELOPMENT			6		6
	ADAM JOSEPH KIVISAARI		4			4
	ADMIRALTY BEVERAGE				11	11
	ADRIANA MONICA ZAIENVOREN				1	1
	ADVANCED DIESEL COMPONENTS				3	3
	AFFORDABLE GRANITE AND MARBLE TOPS				3	3

Multnomah County International Containerized Trade by Company

2014 Calendar Year -- In number of containers

Source: Journal of Commerce, 2014 Port Import Export Reporting Service

Note: PERS data does not include Oregon shippers that requested their names be withheld. Some Oregon businesses ship through third parties (e.g., forwarders, consolidators, distributors, and cooperatives). In these instances, the shippers of record may be from another county than the origin of the product being exported.

AG SPECIALTIES		150	150
AGREX	40		40
AHHA PRODUCTS		11	11
AIMCO PORTLAND OFFICE		11	11
AJINOMOTO FROZEN FOODS USA		404	404
AKINASI SARFO KANTANKA	1		1
AKZO NOBEL COATINGS		1	1
ALASKA TANKER COMPANY		2	2
ALASKAN COPPER AND BRASS		1	1
ALBERTSONS		2	2
ALI LEILA MOHAMED		1	1
ALL ABOUT HEALTH NETWORK		2	2
ALLPORTS INTERNATIONAL		1	1
ALLWOOD IMPORT		44	44
ALPINE BUILDING MATERIALS		1	1
ALWAYS ON TIME USA		1	1
AMBRACH		2	2
AMERICAN CINEMA EQUIPMENT		2	2
AMERICAN TOKYO KASEI		3	3
ANDERSEN HENRIK AHRENTOFT		1	1
ANN SACKS TILE AND STONE	1		1
ANNE SIOBHAN HOAR GREENHOE		1	1
ANNE TOBLER SPANGENBERG		1	1
APERION AUDIO		6	6
APPLE RETAIL STORE		1	1
APW DISTRIBUTING		1	1
ARCHITECTURAL IRON PRODUCTS		1	1
ARENA NORTH AMERICA		6	6
ART VANDELAY		3	3
ASE SUPPLY		14	14
ASEN INTERNATIONAL		25	25
ASIA SOURCES		1	1
ATSUMI MOTOKI MR		1	1
AUSTIN MILLER	3		3
AUTO		3	3
AUTOMOTIVE INDUSTRIAL MARKETING		29	29
AXIOM INDUSTRIES		1	1
B AND B HARDWARE SUPPLY		2	2
BAMBU		1	1
BAREFOOT SOUND		1	1
BATTERY POWER SOLUTIONSL		1	1
BATTERY SYSTEMS		2	2
BAY VALLEY FOODS	3		3
BAZOOKAGOAL		2	2
BC HOLDING		9	9
BCS AMERICA		37	37
BELMONT TRADING		1	1
BEN BRIDGE JEWELER		1	1

Multnomah County International Containerized Trade by Company

2014 Calendar Year -- In number of containers

Source: Journal of Commerce, 2014 Port Import Export Reporting Service

Note: PERS data does not include Oregon shippers that requested their names be withheld. Some Oregon businesses ship through third parties (e.g., forwarders, consolidators, distributors, and cooperatives). In these instances, the shippers of record may be from another county than the origin of the product being exported.

BENSON INDUSTRIES		100	100
BERNARD GAMES		3	3
BEST CABINET AND GRANITE SU		1	1
BEST MANUFACTRERS		1	1
BEST WESTERN INN		1	1
BILLIARDS COM		9	9
BLACKSTONE VENTURES		11	11
BLOUNT		23	23
BODY PORTLAND		3	3
BOEING COMPANY		1	1
BOJITZ	25		25
BOOKPRINTERS NETWORK		2	2
BOYD		27	27
BOYD COFFEE COMPANY		97	97
BRASS AND SILVER TRADITIONS		1	1
BRAZILIAN SPECIALTY COFFEES 1319 N		3	3
BREW CRAFT USA		2	2
BRIDGEPORT BREWING		3	3
BRIDGEPORT FOREST PRODUCTS	24		24
BRIDGESTONE FIRESTONE		50	50
BRIDGEWELL RESOURCES	13	1	14
BUCKEYE PACIFIC		37	37
BUILDWORKS		1	1
BULLSEYE GLASS	6	3	9
BUSHNELLS WAREHOUSING AND TRUCKING		1	1
BUSHWACKER		3	3
CAL SIDE USA		3	3
CALBAG METALS	1040	1	1041
CALBAG NAME AND ADDRESS	1		1
CALBAG STEEL	145		145
CALBEE NORTH AMERICA	46		46
CALEDONIAN ALLOYS		1	1
CALTEC AGRI MARKETING SERVICE		1	1
CANAMERA ENTERPRISES		12	12
CAPSA SOLUTIONS		21	21
CARDINAL TRADING	24		24
CARE MEDICAL EQUIPMENT		5	5
CARGO INTERNATIONAL		3	3
CARL DOUGLAS GREBERT		2	2
CASA BELLA OREGON		41	41
CASA BRUNO		131	131
CASABELLA		1	1
CASCADE		1	1
CASCADE COMPONENT PARTS		27	27
CASCADE PACIFIC FLOOR DISTRIBUTORS	110		110
CASCADE PRODUCTS INTERNATIONAL	1	165	166
CASCADE SHIPPERS ASSOCIATE		1	1

Multnomah County International Containerized Trade by Company

2014 Calendar Year -- In number of containers

Source: Journal of Commerce, 2014 Port Import Export Reporting Service

Note: PERS data does not include Oregon shippers that requested their names be withheld. Some Oregon businesses ship through third parties (e.g., forwarders, consolidators, distributors, and cooperatives). In these instances, the shippers of record may be from another county than the origin of the product being exported.

CAT USED EQUIPMENT SERVICES INTERNA		2	2
CATHEDRAL PARK PLACE		1	1
CATHY RAISMES SWAN		1	1
CCT GLOBAL SOURCING		317	317
CECILIA N BANAHENA	1		1
CELESTICA OREGON		47	47
CESTUSIINE		6	6
CFL COMMERCIAL OFFSHORE		6	6
CGC ENTERPRISES		11	11
CHAMPION HARDWARE		14	14
CHARLOIS COOPERAGE USA		8	8
CHEFS WAREHOUSE PORTLAND		1	1
CHEMICAL DISTRIBUTORS		8	8
CHINA IMPORT EXPORT		5	5
CHINA LI SHIJIE		6	6
CHOO CHOO IMPORTS		6	6
CIARAN THOMAS MURPHY		1	1
CITY LIQUIDATORS		23	23
CITY ROSE TRADE		2	2
CLASSIC EXHIBITS		4	4
CLASSIC HEAT SOURCE		6	6
CLASSIC HONDA USA		2	2
CLEANS ONES		103	103
CLIMAX INTERNATIONAL		2	2
CLIMB X GEAR		1	1
CM TONER		1	1
COAST CUTLERY		5	5
COFFEE BEAN INTERNATIONAL		5	5
COHO DISTRIBUTING		1	1
COLUMBIA DIST OF SEATTLE		1	1
COLUMBIA DISTRIBUTING		50	50
COLUMBIA FOREST PRODUCTS	4		4
COLUMBIA GRAIN INTERNATIONAL	3384	3	3387
COLUMBIA STEEL CASTING	2		2
COLUMBIA WIRE AND IRON	7		7
COMPONENT DESIGN NORTHWEST		17	17
CONSUMER CELLULAR		10	10
CONTINENTAL HOME HARDWARE AND CABIN		49	49
CONTINENTAL POLE AND LIGHTING		16	16
CONTINENTAL WESTERN		64	64
COPPERSMITH GLOBAL LOGISTICS 6135 N		2	2
CORNELL PUMP COMPANY		3	3
COSTA ORO		1	1
CRAB GRAB		1	1
CRISP DESIGNS		3	3
CRUISEWAY LOGISTICS		1	1

Multnomah County International Containerized Trade by Company

2014 Calendar Year -- In number of containers

Source: Journal of Commerce, 2014 Port Import Export Reporting Service

Note: PIERS data does not include Oregon shippers that requested their names be withheld. Some Oregon businesses ship through third parties (e.g., forwarders, consolidators, distributors, and cooperatives). In these instances, the shippers of record may be from another county than the origin of the product being exported.

CSDL		3	3
CUESI USED PARTS STOCK YARD		1	1
CYBER ACOUSTICS		1	1
CYCLE DOG		4	4
CYCLE GEAR		4	4
CYCLONE BICYCLE		44	44
DADIES BOARD SHOP		2	2
DANIEL WESLEY CRIST		1	1
DANNER S		210	210
DARIGOLD		2	2
DAVID RUSNAC		1	1
DAVID SALAS ARGUEDAS		1	1
DEGESCH AMERICA		6	6
DELTICOM NORTH AMERICA		1	1
DEMILEC		2	2
DENCO SALES		5	5
DENNIS UNIFORMPORTLAND PMO		24	24
DESIGN AND DIRECT SOURCE		11	11
DETAIL PLUS		2	2
DEVELOPMENT WORKS		2	2
DIRECTSOURCE INTERNATIONAL		10	10
DIVERSIFIED MARINE INTERNATIONAL		2	2
DNG CHEMICALS		4	4
DOLAN DESIGNS		191	191
DOLAN NORTHWEST		214	214
DORA DARLINGTON	1		1
DOUBLE RIVER FORWARDING	1		1
DR MARTENS LLCFOOTWEAR DISTRIBU		378	378
DS WATERS SIERRA SPRINGS		10	10
DSV AIR AND SEA	67		67
DUA DUA COCONUT PRODUCTS		1	1
DUNAVANT LOGISTICS GROUP	2		2
DVINE WINE DISTRIBUTION		16	16
E AND F MILER		1	1
E E SCHECNK		54	54
EAGLE TEXTILES		2	2
EASY REST		77	77
ECOZOOM		2	2
EDMUND WOO	2		2
ELECTRICAL DISTRIBUTING		27	27
ELECTRO SCIENTIFIC INDUSTRIES		2	2
ELMERS FLAG AND BANNER		1	1
EMERALD PERFORMANCE MATERIALS		6	6
EMOTION THERAPY		1	1
EMPIRE LABORATORY		1	1
ENCORE ENERGY		2	2
ENERCO GROUP		13	13
ENTEGRIS PORTLAND		1	1

Multnomah County International Containerized Trade by Company

2014 Calendar Year -- In number of containers

Source: Journal of Commerce, 2014 Port Import Export Reporting Service

Note: PERS data does not include Oregon shippers that requested their names be withheld. Some Oregon businesses ship through third parties (e.g., forwarders, consolidators, distributors, and cooperatives). In these instances, the shippers of record may be from another county than the origin of the product being exported.

EPN		1	1
ERGO DEPOT		9	9
ESCO CORPROATION		33	33
ESSENTIAL WHOLESALE AND LABS		2	2
ESTELLE IMPORTS		71	71
ETHIC PROMOTIONS		4	4
EVANS METAL FABRICATORS		5	5
EVER GREEN TRADING		22	22
EVERGREEN PLASTIC CONTAINER		64	64
EVP INTERNATIONAL	4		4
EVRAZOREGON STEEL		23	23
EWF MODERN		2	2
EXPEDITORS INTERNATIONAL	586	95	681
EYELEVEL		69	69
FABRIC FOR LESS		1	1
FACTORIES CONNECTION		35	35
FAR EAST SHIP SUPPLY		2	2
FAR WEST FRUIT	4		4
FAXBACK		1	1
FE BENNETT		1	1
FEDEX TRADE NETWORK	20	8	28
FEENAUGHTY MACHINERY		8	8
FINIS		2	2
FISHEL		6	6
FLORAL SERVICES		1	1
FOOD DEPOT INTERNATIONAL	6		6
FOOTWEAR SPECIALTIES INTERNATIONAL		26	26
FRAMERS INVENTORY		2	2
FRANCIUS ESTIL	1		1
FRANK AMATO PUBLICATIONS		5	5
FRED MEYERKROGER		2259	2259
FRIBERF ELECTRIC		1	1
FULCRUM PRODUCTS		26	26
FURNITURE CONNEXION DIRECT CONTAINERS		18	18
GALAXY WINE		59	59
GAMBLIN ARTISTS COLORS		3	3
GDIAPERS		1	1
GEO S BUSH AND COMPANY	31	4	35
GEORGE ALAN ROBUSTI		1	1
GEORGE BUSH		1	1
GEORGIAPACIFIC	759		759
GERBER LEGENDARY BLADES		45	45
GIGANTIC BREWING		1	1
GILMER WOOD COMPANY		2	2
GLACIER TANKS		86	86
GLEN ANCEL RILEY		1	1

Multnomah County International Containerized Trade by Company

2014 Calendar Year -- In number of containers

Source: Journal of Commerce, 2014 Port Import Export Reporting Service

Note: PIERS data does not include Oregon shippers that requested their names be withheld. Some Oregon businesses ship through third parties (e.g., forwarders, consolidators, distributors, and cooperatives). In these instances, the shippers of record may be from another county than the origin of the product being exported.

GLOBAL BUDDHIST WORSHIP ASSOCIATION		1	1
GLOBAL QUARTZ AND QUARRIES		1	1
GLOBAL TRADING RESOURCES	2	1	3
GOLDEN DRAGON TRADING		10	10
GOLDEN WEST BILLIARD MANUFACTURING		5	5
GOW INTERNATIONAL SALES	3		3
GP CONSUMER PRODUCTS NORWEST		1	1
GRAND AND BENEDICTS		5	5
GRAND CENTRAL BAKERY		1	1
GRAND NORTHERN PRODUCTS		3	3
GRAPHIC FLEXIBLE PACKAGING		12	12
GRAPHIC PACKAGING INTERNATIONAL		7	7
GREEN LAYER		11	11
GREEN TRANSFER AND STORAGE		6	6
GREENLAYER SPORTS		1	1
GREENWOOD INTERNATIONAL		2	2
GREG SMITH EQUIPMENT SALES		1	1
GRENADE GLOVES		1	1
GUNDERSON		427	427
GUTTERMANS SUPPLY		2	2
H AND J BROTHERS		1	1
HAMPTON LUMBER SALES		150	150
HAMPTON PT		7	7
HANK LANGFUSS		1	1
HANNA ANDERSSON		14	14
HANNAH KAZAK	1		1
HANNAH SABBAH	1		1
HARMER STEEL PRODUCTS COMPANY		19	19
HEAVY DUTY LIGHTING		5	5
HECTOR ELIAS NINO SALOMON	1		1
HENNINGSSEN COLD STORAGE		3	3
HFT INTERNATIONAL	2		2
HICKORY SPRINGS OF CALIF		1	1
HOFFMAN CONSTRUSCTION		64	64
HOLMANS FUNERAL SERVICE		1	1
HOMESCHOOL SNOWBOARDING		2	2
HORIZON EXPRESS		3	3
HOUSE OF ANTIQUE HARDWARE		27	27
HVAC WHOLESALE		3	3
ICE BREAKER NATURE CLOTHING		21	21
IKEA		179	179
IMAGINE ENERGY		1	1
IN FUGA		1	1
INDEPAK	1		1
INDUSTRIAL TIRE SERVICE		5	5
INFOCUS		2	2

Multnomah County International Containerized Trade by Company

2014 Calendar Year -- In number of containers

Source: Journal of Commerce, 2014 Port Import Export Reporting Service

Note: PERS data does not include Oregon shippers that requested their names be withheld. Some Oregon businesses ship through third parties (e.g., forwarders, consolidators, distributors, and cooperatives). In these instances, the shippers of record may be from another county than the origin of the product being exported.

INSTRUMENT SALES AND SERVICE		126	126
INTERJET OCEAN TRANSPORT	5		5
INTERNATIONAL SYNTHETIC		2	2
INTIBOX		2	2
INTREPID MARBLE AND GRANITE		11	11
ISLABIKES		4	4
IVORY TRADING		21	21
J S WOODHOUSE GENERAL IMPLEM		1	1
JAMES J BOYLE	16		16
JB DESIGNS		1	1
JEFFREY ALLEN		3	3
JELDWEN	1		1
JEWELL ATTACHMENTS	2		2
JFW INDUSTRIES		31	31
JINTHAY TRADING		44	44
JL INDUSTRIES		4	4
JLJ INTERNATIONAL HOLDINGS		14	14
JMS EXPORTS		80	80
JOINT WAY INTERNATIONAL		15	15
JON RAYMOND FELDHAUSEN		1	1
JORGE TORRES MENDOZA	1		1
JUDE ANTHONY CELEDIN		1	1
JUPITER DISTRIBUTORS		2	2
K C INTERNATIONAL	2		2
KANDY MOUNTAIN TREACLE		1	1
KANEMATSU USA	804	33	837
KANEYSU USA	3		3
KANTO		317	317
KEITH KREUZ OREGON DESERT		2	2
KELLER COMERCIAL PORTLAN		1	1
KEYSTONE AUTOMOTIVE INDUSTRIES		1	1
KIM JEUNG MIN		2	2
KINTETSU WORLD EXPRESS		30	30
KIPOR POWER SYSTEMS		6	6
KITCHEN KABOODLE II		7	7
KMB COMPONENTS		6	6
KNS ASSOCIATES		2	2
KORKERS PRODUCTS		20	20
KRUGERS FARM MARKETS		4	4
KTS INTERNATIONAL		9	9
KUEHNE AND NAGEL	133	1	134
KUROTANI NORTH AMERICA	48		48
L D TONGSAGER		9	9
L W O		4	4
LACAMAS LABORATORIES		5	5
LACEYHARMER		1	1
LAGRAND INDUSTRIAL SUPPLY		84	84
LAM RESEARCH INT SARL		6	6

Multnomah County International Containerized Trade by Company

2014 Calendar Year -- In number of containers

Source: Journal of Commerce, 2014 Port Import Export Reporting Service

Note: PERS data does not include Oregon shippers that requested their names be withheld. Some Oregon businesses ship through third parties (e.g., forwarders, consolidators, distributors, and cooperatives). In these instances, the shippers of record may be from another county than the origin of the product being exported.

LANTERN MOON		1	1
LATITUDES		1	1
LAYTON HOME FASHIONS		64	64
LD TONSAGER AND SONS		2	2
LEATHERMAN TOOL GROUP	1	25	26
LED TRAIL		2	2
LEE FANG CHEW		2	2
LEMMA WINE COMPANY		56	56
LENSBABIES		2	2
LIFETIMER INTERNATIONAL		1	1
LIGHTHEARTED PRESS		2	2
LIHUA CABINETS AND GRANITE		16	16
LIN HIN TRADING		51	51
LINDSEY FORWARDERS	5		5
LJ INTERNATIONAL		6	6
LLOYD AMERICA AMERICA	7		7
LOVETEAQ CAROLINA WIDJAJA		1	1
LUCKY DISTRIBUTING		1	1
LUCKY DRAGON IMPORTS		1	1
LVLV ILOVEHANDLES		1	1
MAINFREIGHT PDX	96	1	97
MAKITA OF AMERICA	3		3
MALCOLM JOHN HAWKER		1	1
MALLORY		2	2
MANNING THOMS SCHMIDT		1	1
MARCO PORTLAND		6	6
MARK CHAPMAN		3	3
MARQUEZ		3	3
MARTHA COMPTON		1	1
MARUBENI HOKKAIDO	3		3
MARYS HARVEST FRESH FOODS		1	1
MAYA NATURAL IMPORTS		1	1
MCGUIRE BEARING COMPANY		220	220
MCKENZIE BUYING COMPANY		6	6
MCMENAMINS		1	1
MERCY CORPS GLOBAL HEAD QUARTER		1	1
METRO	1		1
METRO METALS NORTHWEST	820		820
MICAH JOCQUE WALKER		1	1
MICHAEL FINE FURNITURE		21	21
MICKENZIE BUYING		40	40
MICROMETALS	163		163
MID AMERICA OVERSEAS		1	1
MIGHTY LIST		13	13
MILLBANK MATERIALS		109	109
MILLFRUT		15	15
MING FA SUPPLIES		21	21
MINGLEUNG TRADING		12	12

Multnomah County International Containerized Trade by Company

2014 Calendar Year -- In number of containers

Source: Journal of Commerce, 2014 Port Import Export Reporting Service

Note: PERS data does not include Oregon shippers that requested their names be withheld. Some Oregon businesses ship through third parties (e.g., forwarders, consolidators, distributors, and cooperatives). In these instances, the shippers of record may be from another county than the origin of the product being exported.

MITCHELL WINE GROUP		8	8
MODERN SPACES		15	15
MONKEY BUSINESS SPORTS		3	3
MONTE SHELTON		1	1
MOR FURNITURE FOR LESS		33	33
MORASCH MEATS		10	10
MOTION INDUSTRIES		23	23
MOVENTAS		7	7
MR NAKANISHI HOWARD TSUYOSHI		1	1
MR NAOKI UEDA		1	1
MR OTAKE HIROTO		1	1
MR PHILIPPUS MARTHINUS VAN ROOYEN		1	1
MR SECKERSON JOHN		1	1
MR TAMURA MAKOTO		1	1
MR THOMAS CLARK		2	2
MR YONEKAWA TOMOYUKI		1	1
MS STEWART OLYMPIA D		1	1
MS TSUI YEE TWEETY LAM		1	1
MS YAMANOI JOANI MEEHAE		1	1
MULLER WILLIAM GODFREY		1	1
N J LOGISTICS	2		2
NAKAYAMA BUTSUDANS		1	1
NANO INK SPOT		3	3
NATIONAL GLASS		46	46
NAU		2	2
NAZRAELI PRESS		2	2
NEOBRAKE SYSTEMS		4	4
NEWPORT LAYTON HOME FASHIONS		89	89
NEXEO SOLUTIONS		22	22
NICE INTERNATIONAL AMERICA	17	5	22
NICHOLAS JOHN CRAVEN		1	1
NIPPON EXPRESS	26		26
NNR GLOBAL LOGISTICS	151	5	156
NNR GLOBEL EXPRESS	1		1
NORTH AMERICAN WOOD PRODUCTS	10	11	21
NORTH WEST HANDLING SYSTEMS		3	3
NORTH WEST INDUSTRIAL FOUNDRY		2	2
NORTHWEST ASSET SERVICE		1	1
NORTHWEST COOPERAGE		1	1
NORTHWEST PINE SALES		11	11
NORTHWEST SCAFFOLD SERVICES		2	2
NORTHWEST WAREHOUSING		6	6
NORTHWEST WHOLESALE		2	2
NOVA USA WOOD PRODUCTS		9	9
NOVITEC NORTH AMERICA		1	1
NUTCASE		18	18
NW BAMBOO TRIM		2	2
OASIS TISSUE		27	27

Multnomah County International Containerized Trade by Company

2014 Calendar Year -- In number of containers

Source: Journal of Commerce, 2014 Port Import Export Reporting Service

Note: PERS data does not include Oregon shippers that requested their names be withheld. Some Oregon businesses ship through third parties (e.g., forwarders, consolidators, distributors, and cooperatives). In these instances, the shippers of record may be from another county than the origin of the product being exported.

OCCIDENTAL BREWING COMPANY		1	1
OCEAN PACIFIC HK		1	1
ODDBALL SHOES		1	1
OFFSHORE MILLING SERVICES		3	3
OH SHOES		1	1
OHANA DEPOT		69	69
OIA GLOBAL LOGISTICS	58	41	99
OLSHENS PORTLAND		36	36
OPEN MESH MICHAEL BURMEISTER BROWN		3	3
OREGON CRYSTAL TECHNOLOGIES		2	2
OREGON DISPLAY		2	2
OREGON HEALTH AND SCIENCE UNIVERSIT		2	2
OREGON HYUNDAI SUPPLY		9	9
OREGON INTERNATIONAL AIR FREIGHT CO	3		3
OREGON LAMINATIONS COMPANY		2	2
OREGON LIQUOR CONTROL COMMISSION		2	2
OREGON LUMBER		2	2
OREGON TILE AND MARBLE		393	393
ORGANIC PARTNERS INTERNATIONAL		179	179
OTIS ELEVATOR COMPANY		1	1
OTM INTERNATIONAL		2	2
OTTENS PRODUCTS		9	9
P S WINES PHILLIP S SMITH		15	15
PACIFIC BELTING		44	44
PACIFIC INT L IMPORT EXPORT		3	3
PACIFIC MACHINERY AND TOOL STEEL LI		1	1
PACIFIC PACKAGING INDUSTRIES		15	15
PACIFIC PANELS INTERNATIONAL		67	67
PACIFIC RIM INTERNATIONAL		14	14
PADDLE PALACE TABLE TENNIC		3	3
PALADIN BRANDS GROUP		22	22
PAPER PRODUCTS MARKETING	53	288	341
PARKROSE HARDWARE		2	2
PARTSCHANNELPORTLAND		120	120
PASCO OF AMERICA	172		172
PATRICK LUMBER	67	11	78
PATTY MERRILL		3	3
PATTY REED AND ASSOCIATES		6	6
PAUL ALAN GAUDIO		1	1
PAUL STEVEN MANZI		1	1
PCC STRUCTURALS		15	15
PDX NATURALS		1	1
PDX PORTLAND		10	10
PDX WINES		27	27
PEAK AUDIO GROUP		12	12

Multnomah County International Containerized Trade by Company

2014 Calendar Year -- In number of containers

Source: Journal of Commerce, 2014 Port Import Export Reporting Service

Note: PERS data does not include Oregon shippers that requested their names be withheld. Some Oregon businesses ship through third parties (e.g., forwarders, consolidators, distributors, and cooperatives). In these instances, the shippers of record may be from another county than the origin of the product being exported.

PECO		44	44
PENDLETON WOOLEN MILLS		201	201
PENTAL GRANITE AND MARBLE OF OREGON		19	19
PEREGRINE EXPORT		1	1
PERFORMANCE CONTRACTING		2	2
PERUGLOBAL		4	4
PET SPECIALTY MERCHANDISERS		1	1
PETER CHASE VOIGTSBERGER		1	1
PETERSON CAT		1	1
PETIT MONDE WINE MERCHANT		28	28
PHASE ONE ELECTRONICS		11	11
PHILIP GRAHAM WOODMAN		1	1
PIAA		12	12
PIERCEPACIFIC MANUFACTURING		3	3
PINE CREST FABRICS		92	92
PIONEER FLORAL IMPORTS		1	1
PITCH DARK CHOCOLATE		1	1
PITTSBURGH GLASS WORKS		7	7
PIXELWORKS		1	1
PLANAR SYSTEMS		103	103
PLANET X USA		3	3
PLYWOOD TROPICS USA	3		3
POLER WHQ		1	1
POLY FLOW		2	2
POLYMERS CENTER OF EXCELLENCE		1	1
POMEGRANATE COMMUNICATIONS		20	20
PORTLAND BOTTLING CO GENE	2	1	3
PORTLAND CHESS SHOP		2	2
PORTLAND CLOSEOUT		2	2
PORTLAND DESIGN WORKS		19	19
PORTLAND JAPANESE GARDEN		1	1
PORTLAND PACIFIC	2		2
PORTLAND PEDALS		1	1
PORTLAND PRODUCTIONS		17	17
PORTLAND ROASTING HOLDINGS		2	2
PORTLAND WAREHOUSE		2	2
POSTER GARDEN		1	1
POTTERY DISTRIBUTORS		4	4
PRATT AND LARSON CERAMICS		3	3
PRECISE MANUFACTURING		1	1
PRECISION PLUMBING PRODUCTS		13	13
PRINTVISION		2	2
PROJECT PM		137	137
PROTEUS COMMODITIES	249		249
PROVVISTA SPECIALTY FOODS		1	1
PS WINES		2	2
PUJ		4	4

Multnomah County International Containerized Trade by Company

2014 Calendar Year -- In number of containers

Source: Journal of Commerce, 2014 Port Import Export Reporting Service

Note: PERS data does not include Oregon shippers that requested their names be withheld. Some Oregon businesses ship through third parties (e.g., forwarders, consolidators, distributors, and cooperatives). In these instances, the shippers of record may be from another county than the origin of the product being exported.

QIAN TIAN TIAN		1	1
QUALITY HOME BUILDING SUPPLIES		2	2
R G C		2	2
R2M2 REBAR AND STRESSING		5	5
RADIANT GLOBAL LOGISTICS	6		6
RADZ BRANDS		9	9
RAND AND BENEDICTS		57	57
RAVISHANKAR KUPPUSWAMY		1	1
REINHART GLOBAL BRANDS		2	2
REJUVENATION		79	79
RESORT SUPPLY		15	15
RESPECT YOUR UNIVERSE		2	2
RGC COFFEE		36	36
RICHARD MURRAY AND COMPANY 109N		1	1
RICHARDS HOMEWARES		700	700
RICHARDS PACKAGING		220	220
RIO MEDIA PRODUCTIONS		2	2
RIVERGATE SCRAP METALS		5	5
RLB WORLDWIDE C O		1	1
ROBERTO JESUS TORRES DELGADO		1	1
ROBERTSON GRATING PRODUCTS		15	15
ROCKWOOD LITHIUM		4	4
ROGERS MACHINERY COMPANY		20	20
ROLANKA INTERNATIONAL		1	1
ROSE CITY TEXTILES		4	4
ROSE CITY WHOLESALE		2	2
ROXCEL	57		57
RUBBER RESOURCE		9	9
RYAN PERKINS JR		1	1
RYCO SALES AND MKTG		3	3
S I QUAN II	94		94
S L FOLLEN COMPANY	486	17	503
SALVATION ARMY	41		41
SAMUEL SON		12	12
SANDRA STEPHANIE PEARSON		1	1
SANTONG LED SIGN US FACTORY		1	1
SAPA CANADA		1	1
SCHNITZER STEEL INDUSTRIES	2440		2440
SEA HORSE CONTAINER LINES	19		19
SEABRIDGE INTERNATIONAL		2	2
SEKO WORLDWIDE PORTLAND	12		12
SESHADRI SARKAR		1	1
SHAMROCK BUILDING MATERIALS	15		15
SHEDRAIN		156	156
SHELLY LARSON		1	1
SHELTER FOREST INTERNATIONAL		529	529
SHIN SHIN FOODS		3	3
SHOGUNS GALLERY		1	1

Multnomah County International Containerized Trade by Company

2014 Calendar Year -- In number of containers

Source: Journal of Commerce, 2014 Port Import Export Reporting Service

Note: PERS data does not include Oregon shippers that requested their names be withheld. Some Oregon businesses ship through third parties (e.g., forwarders, consolidators, distributors, and cooperatives). In these instances, the shippers of record may be from another county than the origin of the product being exported.

SHOWERS PASS PORLAND		8	8
SILTRONIC		4	4
SILVER EAGLE MANUFACTURING		1	1
SIMON GOLUB AND SONS		1	1
SINOTECH		13	13
SKUTT CERAMIC PRODUCTS		5	5
SL FOLLEN COMPANY	15		15
SMITH TEA MAKER		2	2
SNAPPY CHARLOTTE		1	1
SNOW BRAND SEED USA			
SNOW PEAK	36		36
SNOW PEAK A OF		17	17
SOCK IT TO ME		2	2
SOJITZ OF AMERICAPORTLAND BRANCH		28	28
SOLESTRUCK	753		753
SONETICS		1	1
SPLENDID CYCLES		8	8
ST QUAN II TNC		1	1
STAFFORD TEXTILES	3		3
STELLAR SOUNDS		1	1
STENNO CARBON		2	2
STEPHENY PHILIP WOODSIDE		2	2
STONE AND CABINET OUTLET		1	1
STORABLES		34	34
STREAMLINE LOGISTICS		3	3
STREIMER SHEET METAL WORKS	19	3	22
SULZER PUMPS US		5	5
SUMMIT NW	2	4	6
SUN YING		3	3
SUNSET FOREST PRODUCTS		1	1
SUSTAINABLE		2	2
SUSTAINABLE HARVEST		3	3
		29	29
SUSTAINABLE SOLUTIONS INTERNATIONAL			
SWS OREGON		9	9
SYMPLE FOODS		4	4
SYSTEMS SERVICES OF AMERICA		1	1
T AND A SUPLY PORTLAND	11		11
TAI PAN		2	2
TAO OF TEA		1	1
TARR		8	8
TARR ACQUISITION		1	1
TCI AMERICA		2	2
TEAM TUBE OREGON		1	1
TERI LINGERIE		5	5
TERMINAL TRANSFER		5	5
TEUFEL HOLLY FARMS		21	21
THAEMERT ANDREW ROBERT	2		2
		2	2

Multnomah County International Containerized Trade by Company

2014 Calendar Year -- In number of containers

Source: Journal of Commerce, 2014 Port Import Export Reporting Service

Note: PERS data does not include Oregon shippers that requested their names be withheld. Some Oregon businesses ship through third parties (e.g., forwarders, consolidators, distributors, and cooperatives). In these instances, the shippers of record may be from another county than the origin of the product being exported.

THE CRONN		151	151
THE FURNITURE CONNEXION		311	311
THE HERCULES TIRE AND RUBBER COMPAN		14	14
THE HOFFMAN GROUP		30	30
THE JASMINE PEARL TEA MERCHANTS		1	1
THE LUBRIZOL		2	2
THE SALVATION ARMY ADULT REHABILITA	12		12
THE URBAN REALM		1	1
THE ZYTHOS PROJECT		2	2
THO AN		5	5
TIDAL TRANSPORT AND TRADING USA		4	4
TILLING TIMBER	2823		2823
TIMBER MARKET STRATEGIES		1	1
TIMBER PRESS		38	38
TLR TOTAL LOGISTICS RESOURCES IN	98		98
TONKIN PARTS CENTER		4	4
TOSOH QUARTZ		10	10
TOTAL LOGISTICS RESOURCES	4		4
TOTEM STEEL INTERNATIONAL		147	147
TOUCHSTONE GRANITE AND MARBLE		11	11
TOYOTA TSUSHO AMERICA	71		71
TRAEGER PELLET GRILLS		55	55
TRANS PACIFIC TRADING	4946		4946
TRANSCO PLASTIC INDUSTRIES		1	1
TRANSTAR INDUSTRIS		32	32
TRIAD SPEAKERS		12	12
TRICORBRAUN		2	2
TRILLIUM HOLDINGS		14	14
TRIMAC PANEL PRODUCTS		3	3
TRIQUINT SEMICONDUCTOR		9	9
TROPICAL SALVAGE		8	8
TUMAC LUMBER	362	1696	2058
TURNSTYLE BRANDS		39	39
TYLER PIPE PORTLAND YARD		36	36
TYLER UNION PORTLAND YARD		47	47
TYR WOOD PRODUCTS	7	13	20
U S BANK NATIONAL ASSOCIATION		3	3
U S DISTRIBUTING		3	3
UNION FOUNDRY COMPANY		16	16
UNIQUE RETAIL SOLUTIONS		1	1
UNISOURCE MANUFACTURING		33	33
UNITED TILE PORTLAND		207	207
UNITED WESTERN SUPPLY COMPANY		2	2
UPPER COLUMBIA MILL	643		643
UROBOROS GLASS STUDIOS	1		1
US BANK NATIONAL ASSO		4	4
VANGUARD NATIONAL PARTS		2	2

Multnomah County International Containerized Trade by Company

2014 Calendar Year -- In number of containers

Source: Journal of Commerce, 2014 Port Import Export Reporting Service

Note: PERS data does not include Oregon shippers that requested their names be withheld. Some Oregon businesses ship through third parties (e.g., forwarders, consolidators, distributors, and cooperatives). In these instances, the shippers of record may be from another county than the origin of the product being exported.

VEIT KLEE		1	1
VELENDO		19	19
VELOCITYCARBON		1	1
VELOTECH		2	2
VERSAILLES GARDENS		2	2
VERSE CHORUS PRESS		1	1
VESTASAMERICAN WIND TECHNOLOGY		1	1
VETUS		1	1
VIGOR FAB		2	2
VIN GARDE WINES		58	58
VRA NUCOR STEELSEATTLE		7	7
W DOUGLAS HALL		1	1
W J BYRNES	1		1
WALTER KIDDE PORTABLE EQUIPMENT		2	2
WANKE CASCADE DISTRIBUTION		2	2
WANNALEI		1	1
WARM AND SAFE HEATED GEAR		1	1
WATER TECHNOLOGY RESOURCES		1	1
WENDY ROBIN MASON AUDIE		1	1
WENKE CASCADE		6	6
WEST COAST DRAPE		1	1
WEST COAST SAILING		2	2
WEST COAST WIRE ROPE AND RIGGING		31	31
WESTERN CONTAINER TRANSPORT		18	18
WESTERN PACIFIC BUILDING MATERIALS	17	13	30
WILDA		1	1
WILLAMETTE EXPORTING		2	2
WILLIAMS CONTROLS	5	327	332
WINGMAN ENTERPRISES		1	1
WISH PETS		39	39
WJ BYRNES		1	1
WOODCRAFTERS LUMBER SALES		3	3
WOODENTRACKS COM		6	6
WY EAST PRODUCTS		2	2
XEROX OFFICE GROUP		105	105
XIONGS INTERNATIONAL HOUSEWARES		1	1
XPEDX		264	264
YAHUI LI		2	2
YATES JANE MAUPIN		1	1
YAY WALLET		1	1
YMT	3		3
YOSHIDA FOODS INTERNATIONAL	26		26
YOUNGS COLUMBIA		38	38
ZAK MOSIEUR		4	4
ZANCANELLA IMPORTING		28	28
ZEN NON GRAIN CORPORAON	4864		4864
ZHUO CHENG PLASTIC		20	20
ZIDELL MARINE		2	2

Multnomah County International Containerized Trade by Company

2014 Calendar Year -- In number of containers

Source: Journal of Commerce, 2014 Port Import Export Reporting Service

Note: PIERS data does not include Oregon shippers that requested their names be withheld. Some Oregon businesses ship through third parties (e.g., forwarders, consolidators, distributors, and cooperatives). In these instances, the shippers of record may be from another county than the origin of the product being exported.

	ZION SHANE ARMSTRONG			1	1
PORTLAND Total		721	27206	18696	45902
PORTLAND OR	BEST CABINET GRANITE SUPPLY			5	5
	EGS MEXICO			5	5
	HIGH PURITY WAREHOUSE WAKO CHEM			1	1
	KC PET AIRLINE TRAVEL PRODUCTS			2	2
	MATTHIJS WILLEM VISCH			1	1
	MATTRESS			1	1
	SELLERENGINE SOFTWARE			1	1
PORTLAND OR Total		7		16	16
TROUTDALE	AMERICAN TIRE			64	64
	FLORAL SERVICES			30	30
	GRANSTROM EVERGREENS			1	1
	LETOURNEAU TECHNOLOGIES			3	3
	SCHMILNE			69	69
	SILKCRAFT OF OREGON			129	129
	STREBIN FARMS		101		101
	TOYO TANSO			31	31
TROUTDALE Total		8	101	327	428
WOOD VILLAGE	NURSERY SOURCE			23	23
	STROME ENTERPRISES			2	2
WOOD VILLAGE Total		2		25	25
Total		767	27479	19286	46765

