

**CLACKAMAS COUNTY BOARD OF COUNTY COMMISSIONERS**  
**Sitting/Acting as (if applicable)**  
**Policy Session Worksheet**

**Presentation Date:** May 10, 2016 **Approx. Start Time:** 1:30pm **Approx. Length:** 30 min.

**Presentation Title:** CREEW “Our River” Action Plan Update

**Department:** Business and Community Services (BCS), Dept. of Transportation and Development (DTD); Health, Housing and Human Services (H3S), Clackamas County Sheriff’s Office (CCSO), Public and Government Affairs (PGA).

**Presenters:** Rick Gruen, Parks Manager; Lt. Rob Wurpes, CCSO, Sgt. Steve Thoroughman, CCSO/Marine Patrol

**Other Invitees:** Joe Marek, DTD/Safe Communities; Brian McCrady, H3S/Children, Youth & Families; Ryan Johnson, PGA; Eben Polk, DTD/Sustainability; Cheryl McGinnis, Clackamas River Basin Council; Laura Zentner, BCS Deputy Director; Gary Barth, BCS Director

**WHAT ACTION ARE YOU REQUESTING FROM THE BOARD?**

Continued support and direction from the Board to utilize staff time and resources as available to implement the Clackamas River Enforcement and Ecology Workgroup (CREEW) “Our River” Action Plan objectives.

**EXECUTIVE SUMMARY:**

The 2014 CREEW “Our River” Action Plan was approved by the BCC at its April 15, 2014 study session and rolled out in June, 2014 for the start of the summer park season. Preparation is currently underway for its third season of implementation as part of a five year effort.

Heavy park and river usage during the summer months has resulted in Barton Park and Carver Boat Ramp operating at, or near maximum capacity. The problems of traffic, parking, alcohol use, river safety, littering, and disorderly conduct required a collaborative approach, leading to the formation of CREEW and the 2014 “Our River” Action Plan as a way to find solutions for implementing changes in County parks that will also transform more positive attitudes toward river safety and river health.

The BCC has also recognized that the parks and river issues are a County-wide concern and additional resources for law enforcement are required to maintain the positive impact resulting from the 2013 alcohol policy amendment over the next four to five summer park and river recreation seasons. The BCC has previously allocated \$40,000 to County Parks in 2014 and 2015 respectively, requested through policy level proposals during the budget process, for additional law enforcement services above what County Parks allocates in its annual operating budget for reserve deputy support.

With policy level funding support from the BCC in FY14/15 and 15/16, CREEW has been able to implement a number of health and safety related tasks and services designed to create a more inviting and family-friendly culture for park and river users along the Clackamas River from Barton Park to the Carver Boat Ramp. This effort now aligns with Performance Clackamas goals and

BCS/Parks Managing for Results performance measure outcomes related to customer safety and enhancing the customer experience.

2015 Accomplishments:

- Zero drownings in 2015 (and 2014) on the Clackamas River between Barton and Carver
- Alcohol related citations decreased:
  - Barton - 25, an 80% decrease from 2014
  - Carver – 11, a 65% decrease from 2014
- Rescue donuts installed at Barton and Carver boat ramps.
- Expanded life jacket loaner program between Barton Park and Carver Boat Ramp
- CCSO/Marine Patrol implemented a Personal Flotation Device (PFD) diversion program - 60% participation
- Barton Park Road traffic calming improvements (in progress)
- Installation of Bakers Ferry Bridge fencing (downstream side) to limit river access along embankment
- Installation of Carver Bridge river monitoring camera
- Contracted traffic control crews at Springwater Rd./Hatton Rd. and Carver Bridge/Hwy224

Proposed for 2016:

- Clackamas River Safety Map
- Kipling Rock – Eddy Hazard Sign
- Funding for CCSO/Marine Patrol Unit – low draft boat

CREEW is a collaborative effort of BCS/County Parks; CCSO; H3S/Children, Youth and Family Services; DTD/ Traffic Engineering, Safe Communities and Sustainability; Public and Government Affairs (PGA); Clackamas River Basin Council and other volunteer organizations and private landowners.

FINANCIAL IMPLICATIONS (current year and ongoing):

Is this item in your current budget?  YES  NO

What is the cost? \$40,000                      What is the funding source? Policy Level Proposal  
BCS/Parks has submitted a policy level budget proposal request in the amount of \$40,000 for law enforcement and consideration in the FY 16/17 budget by the Budget Committee. County Parks has also budgeted \$46,000 in FY16/17 to meet the projected \$86,000 total cost for law enforcement services. CREEW partners are also contributing cash and in-kind services consistent with departmental budget objectives or specific grant deliverables to support implementation of the CREEW “Our River” Action Plan objectives.

STRATEGIC PLAN ALIGNMENT:

- How does this item align with your Department’s Strategic Business Plan goals?  
Residents and visitors will experience clean, safe and healthy recreation opportunities
- How does this item align with the County’s Performance Clackamas goals?
- Honor, Utilize, Promote and Invest in our Natural Resources

**LEGAL/POLICY REQUIREMENTS:**

Compliance with current County Parks Ordinance provides specific authority for the CCSO to perform visual inspections of coolers that was adopted in August, 2013. The ordinance requires citizens refusing inspection to be directed to leave the park premises

**PUBLIC/GOVERNMENTAL PARTICIPATION:**

CREEW is a collaborative, interdepartmental task force along with external nonprofit organizations:

- BCS/County Parks
- H3S/Office of Children, Youth and Families
- DTD/Traffic Engineering; Safe Communities; Sustainability
- CCSO and Marine Patrol Unit
- County Counsel
- Public and Government Affairs
- Clackamas River Basin Council

**OPTIONS:**

Informal presentation. No action required.

**RECOMMENDATION:**

The CREEW Team greatly appreciates the ongoing support and direction provided by the BCC for continued implementation of the CREEW Our River Action Plan.

**ATTACHMENTS:**

Attachment 1 – CREW “Our River” Action Plan 2015 Accomplishments/2016 Objectives

**SUBMITTED BY:**

Division Director/Head Approval \_\_\_\_\_

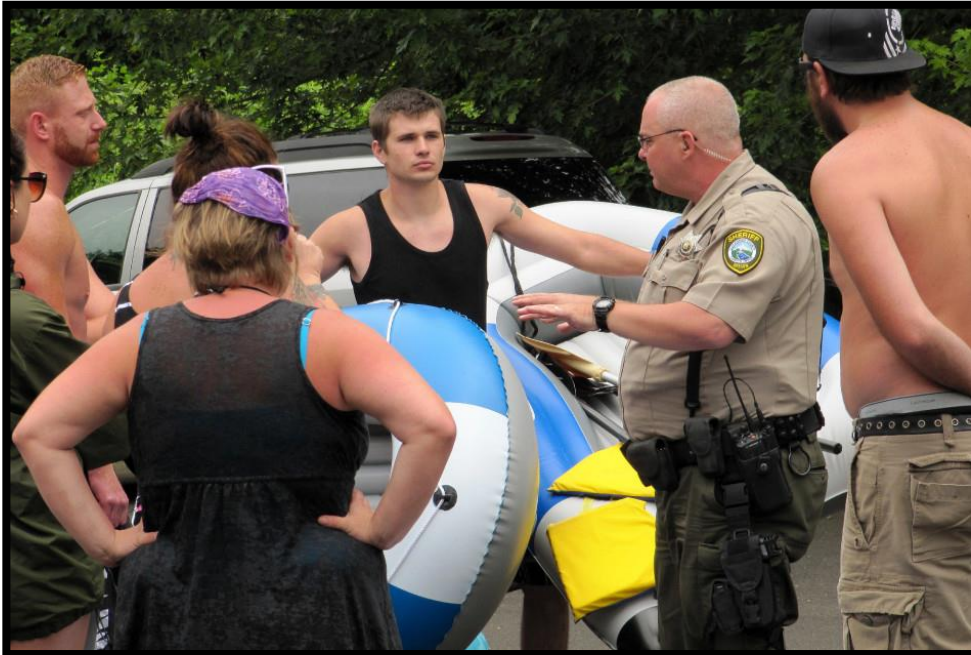
Department Director/Head Approval \_\_\_\_\_

County Administrator Approval \_\_\_\_\_

For information on this issue or copies of attachments, please contact <u>Rick Gruen</u> @ <u>503-742.4345</u>
--

# CREW

**2014 “Our River” Action Plan  
Annual Update to BCC  
May 10, 2016**



## Clackamas County Parks & Forest

A Division of  
Business and  
Community Services

[www.clackamas.us/parks](http://www.clackamas.us/parks)

Gary Barth, BCS Director

Laura Zentner, BCS Deputy Director

Rick Gruen, Parks Manager

**CREEW** is an interdepartmental team that is actively working together, along with local community organizations, to help ensure a safe and healthy experience for the public in our county parks and rivers.

**BCC** approved a four year outreach, education and enforcement effort detailed in the **CREEW 2014 “Our River” Action Plan** following the BCC’s 2013 decision to amend County Code and support enforcement of the **No Alcohol policy** in County parks day use areas.

### **CREEW TASK FORCE:**

- BCS/Clackamas County Parks
- Clackamas County Sheriff's Office (CCSO)
- Public and Government Affairs (PGA)
- Health, Housing and Human Services (H3S)
- DTD/Engineering – Transportation Safety and Safe Communities
- Clackamas River Basin Council (CRBC)

## **CREEW**

### **Clackamas River Enforcement and Ecology Workgroup**



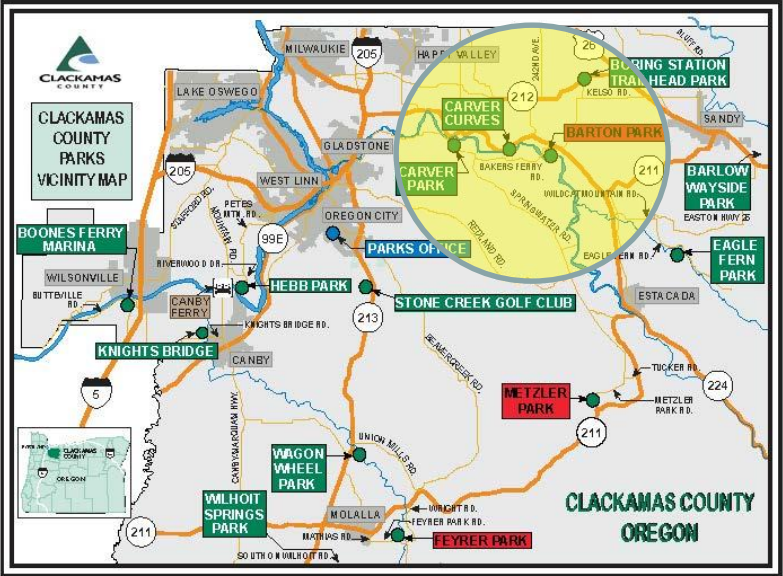
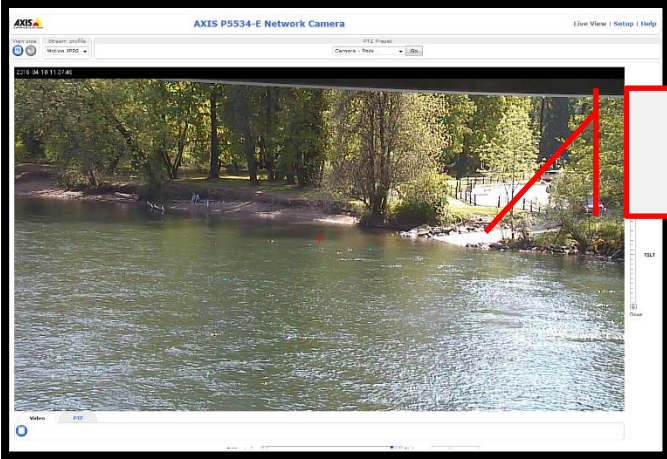
# CREW FOCUS AREA

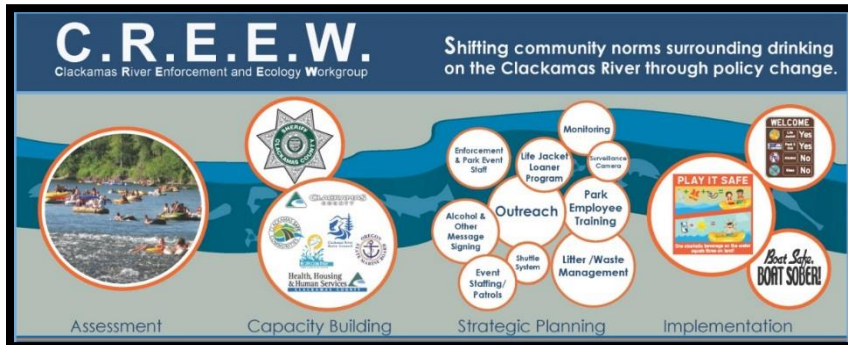
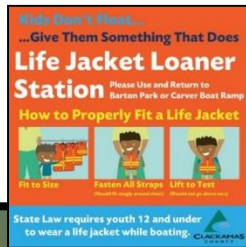


Barton Park  
Boat Ramp



Carver  
Boat Ramp





# CREW

## Goals

1. Enforcement, Education and Outreach in the parks and on the river.
2. Transform attitudes towards river health and safety
3. Decrease use of alcohol in parks and on river while floating and rafting
4. Reduce bottles, cans and garbage left in the river and along the river bank

**County Parks, on half of CREEW, has submitted a \$40,000 policy level budget proposal, a continuation of the current funding level. These critical resources provide additional CCSO deputies for enhanced law enforcement to serve more than 130,000 summer recreation enthusiasts with a safe and healthy park and river experience.**

At a cost of \$0.31 cents per visitor, the CREEW Task Force is making continued progress towards achieving the multi-year goals adopted in the **2014 CREEW Our River Action Plan** to transform attitudes in the parks and on the river for a cleaner, healthier and safer recreation experience.

## **CREEW Policy Level Request**

**The Policy Level Proposal will be combined with \$46,000 allocated by County Parks in its FY16/17 budget to make \$86,000 available for law enforcement.**



# CREW

## 2015 OUTCOMES & ACCOMPLISHMENTS

- **Zero drownings** in 2015 (and 2014) on the Clackamas River between Barton and Carver
- **Alcohol related citations decreased:**
  - Barton - 25, an 80% decrease from 2014
  - Carver – 11, a 65% decrease from 2014
- **Rescue donuts** installed at Barton and Carver boat ramps.
- Expanded **life jacket loaner** program
- CCSO/Marine Patrol implemented a **Personal Flotation Device (PFD) diversion program** - 60% participation
- Barton Park Road **traffic calming improvements** (in progress)
- Installation of **Bakers Ferry Bridge fencing** (downstream side) to limit river access along embankment
- Installation of **Carver Bridge river monitoring camera**
- **Contracted traffic control crews** on Springwater Rd and Carver/Hwy224

**Barton & Carver Parks**  
Memorial Day through Labor Day 2015  
May 25 - September 7, 2015

Type of Citation	Barton Park			Carver Park			Total
	Citation	Written Warning	Barton Total	Citation	Written Warning	Carver Total	
Criminal Trespass			2	2		2	2
MIP	3		3				3
Parks	53		53	143		143	196
Traffic	54	3	57	58	2	60	117
Total:	110	3	113	203	2	205	318

2 Marine Rescue Calls  
5 Marine Patrol Calls  
At or between the two parks

## ONGOING:

- Continue implementation of 2014 CREEW “Our River” Action Plan – 3<sup>rd</sup> Year

## Proposed for 2016:

- Clackamas River Safety Map
- Kipling Rock – Eddy Hazard Sign
- Funding for CCSO Marine Patrol – low draft boat



# CREEW

# 2016 GOALS & OBJECTIVES

**The End !**



**Thank you for your support**



Contact us:



**Business and Community  
Services**

**County Parks & Forest**

**CREW TASK FORCE:**

- BCS/Clackamas County Parks
- Clackamas County Sheriff's Office
- Public and Government Affairs
- Health, Housing and Human Services
- DTD/Engineering, Transportation Safety and Safe Communities
- Clackamas River Basin Council

**[www.clackamas.us/parks](http://www.clackamas.us/parks)**