

# OAK LODGE COMMUNITY PROJECT

## PUBLIC DESIGN WORKSHOP



**NORTH CLACKAMAS**  
PARKS & RECREATION DISTRICT



**opsis**

**PROJECT TEAM**  
**OAK LODGE**  
**COMMUNITY PROJECT**

Architect | **Opsis Architecture**

Jim Kalvelage, Partner

Jennifer Hoffman, Project Manager

Nada Maani, Architect

Library Architect | **Johnston Architects**

Ray Johnston, Partner

Mona Zellers, Architect

Landscape Architect | **Lango Hansen**

Kurt Lango, Partner

Brian Martin, Landscape Architect

Public Engagement | **jla Public Involvement**

Allison Brown, Facilitation

# SITE ANALYSIS

## CONCORD PROPERTY

# EXISTING NCPRD PARKS

## CONCORD PROPERTY

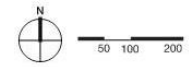


# CIRCULATION CONCORD PROPERTY

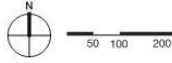


## LEGEND

- pedestrian
- pedestrian, bike
- pedestrian, bus, bike
- bus stop
- vacated right of way



# VIEWS CONCORD PROPERTY

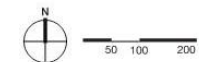


# ZONING CONCORD PROPERTY



## LEGEND

- OSM**  
open space management
- R7 | R8 | R10**  
urban low density residential
- MRI**  
medium density residential
- C3**  
general commercial
- HDR**  
high density residential



# SITE CONTEXT

## CONCORD PROPERTY



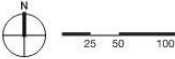


# LANDSCAPE CONCORD PROPERTY

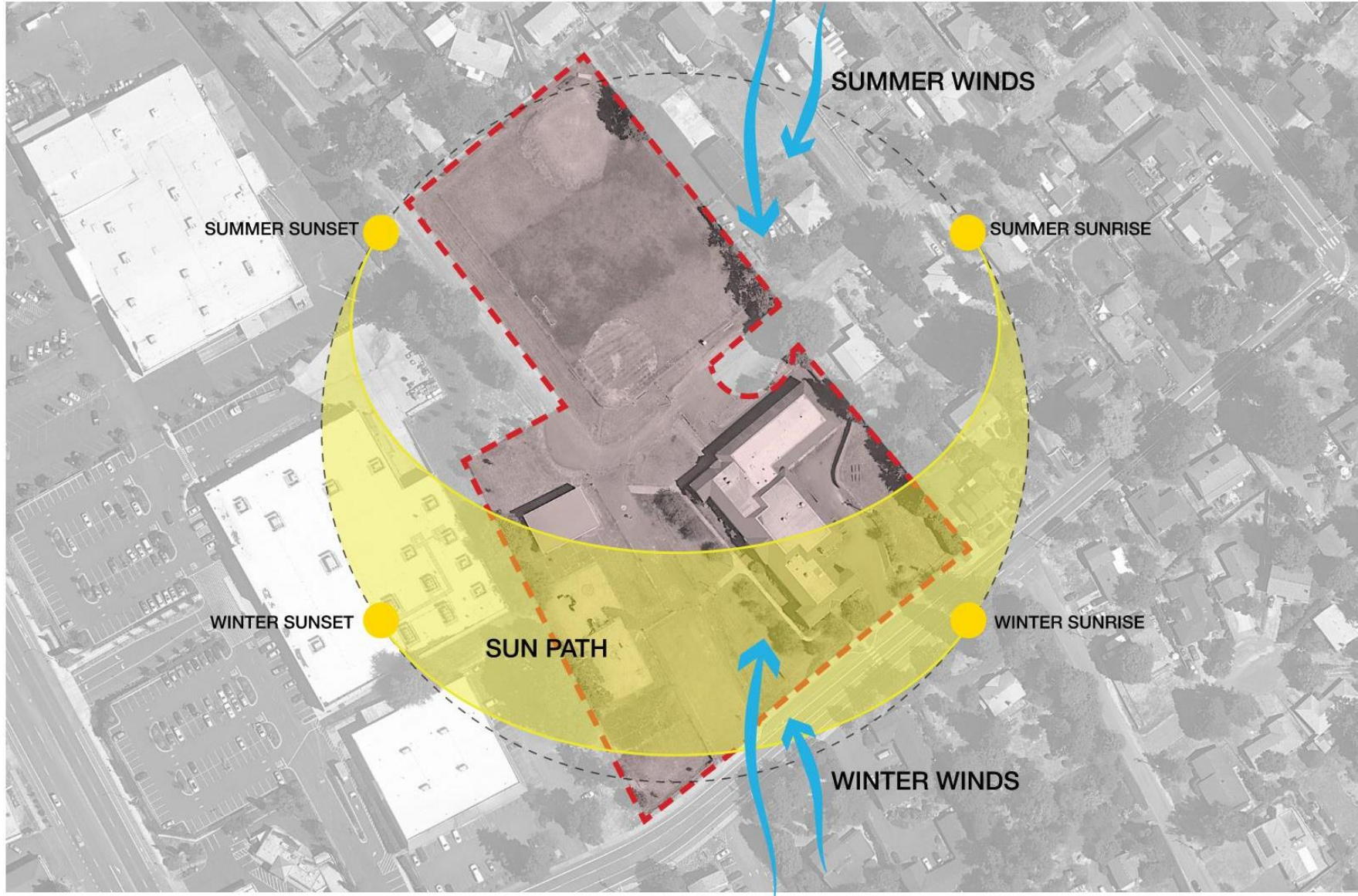


### LEGEND

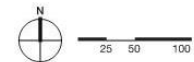
 embankments



# CLIMATE CONCORD PROPERTY



# SITE OPPORTUNITIES CONCORD PROPERTY

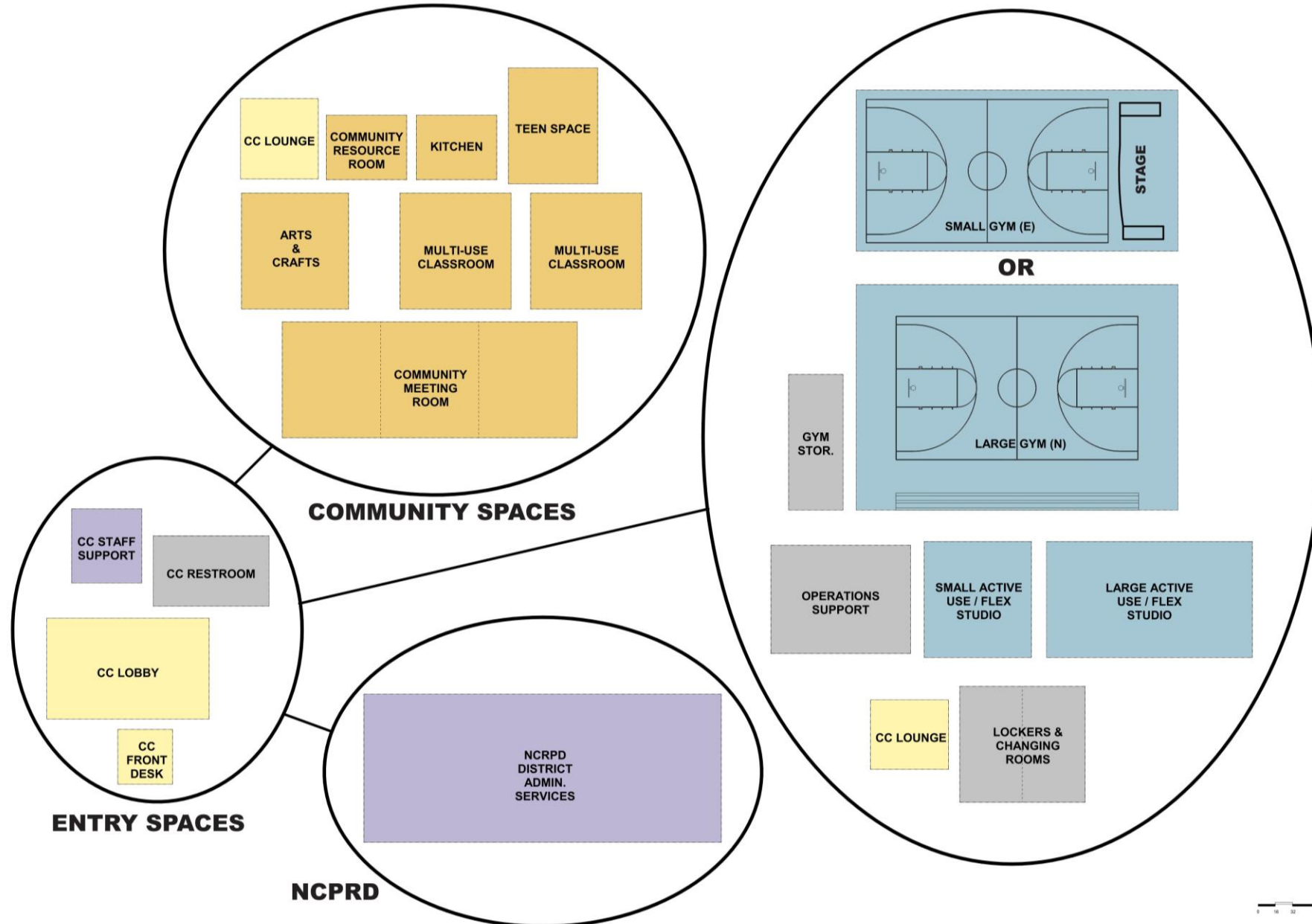


# PROGRAM ANALYSIS

## CONCORD PROPERTY

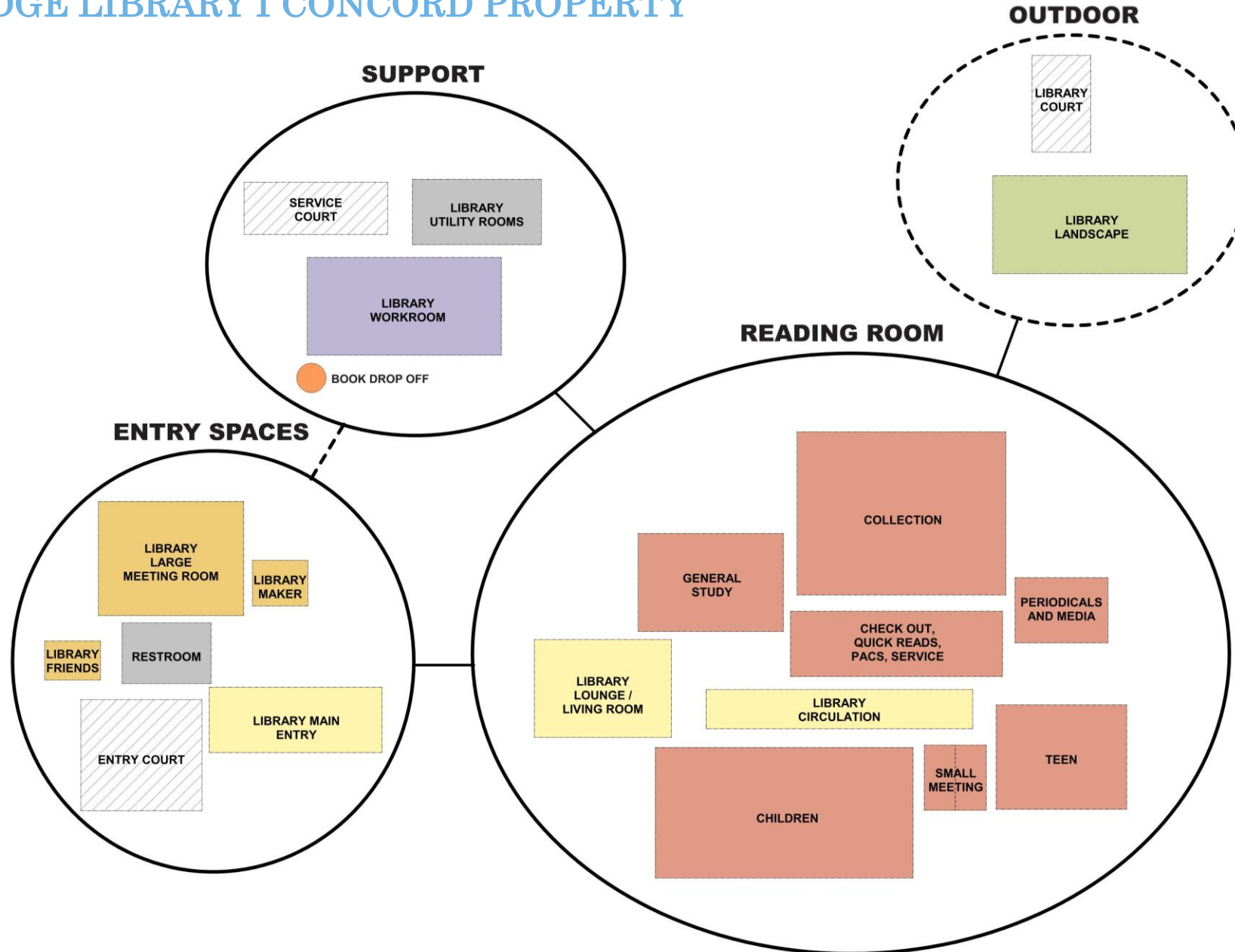
# AFFINITY DIAGRAM

## COMMUNITY CENTER I CONCORD PROPERTY



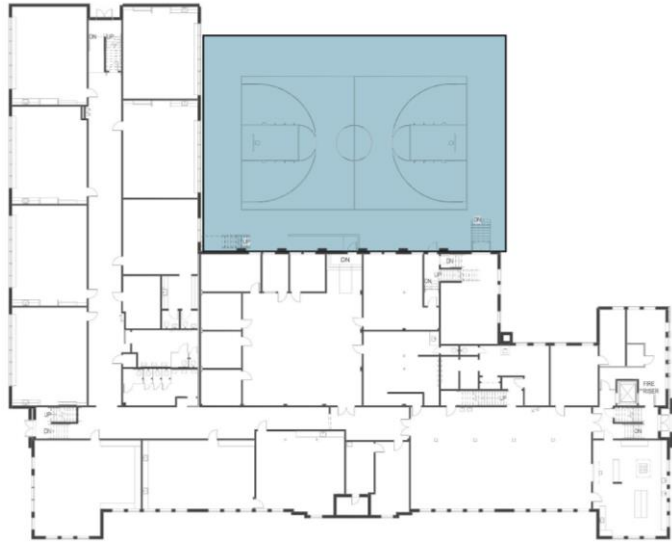
# AFFINITY DIAGRAM

## OAK LODGE LIBRARY I CONCORD PROPERTY

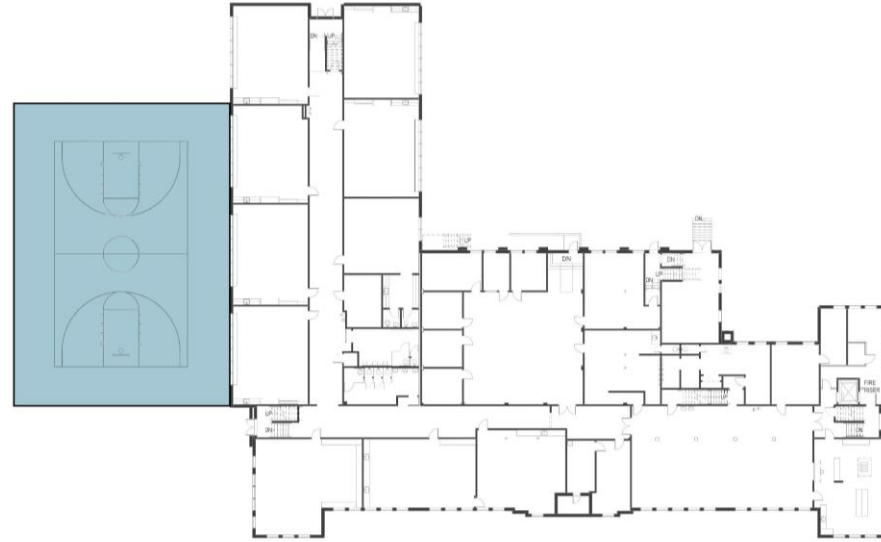


# GYMNASIUM OPTIONS

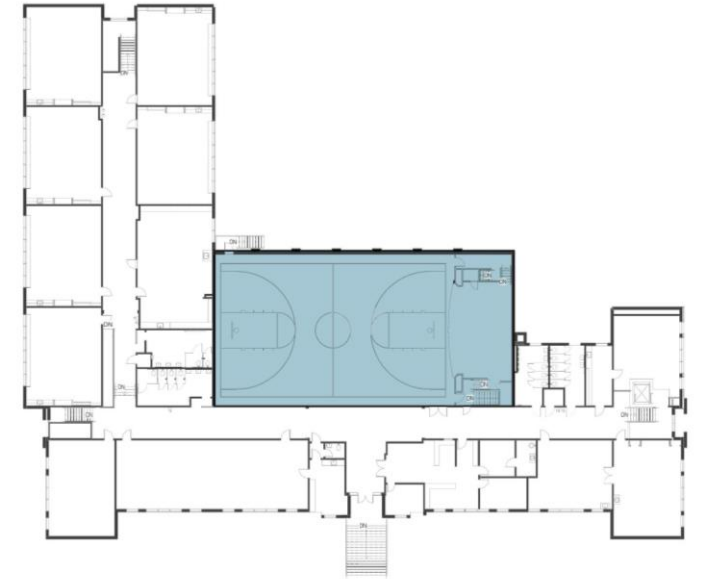
## OAK LODGE LIBRARY I CONCORD PROPERTY



**OPTION 1**  
LOWER LEVEL



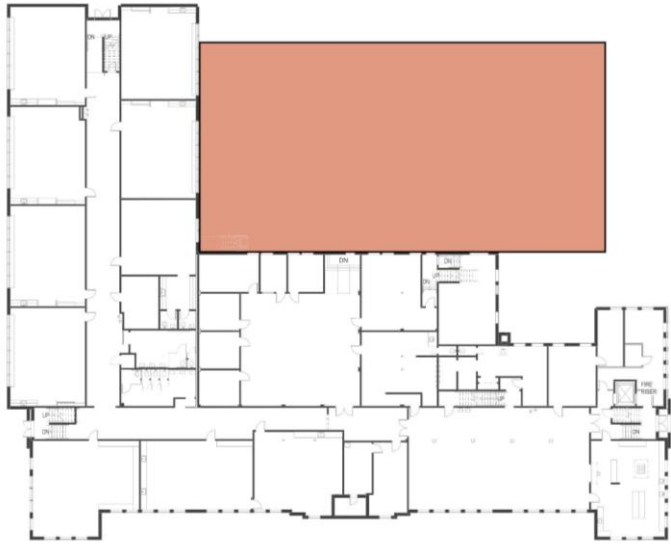
**OPTION 2**  
LOWER LEVEL



**OPTION 3**  
UPPER LEVEL

# LIBRARY READING ROOM OPTIONS

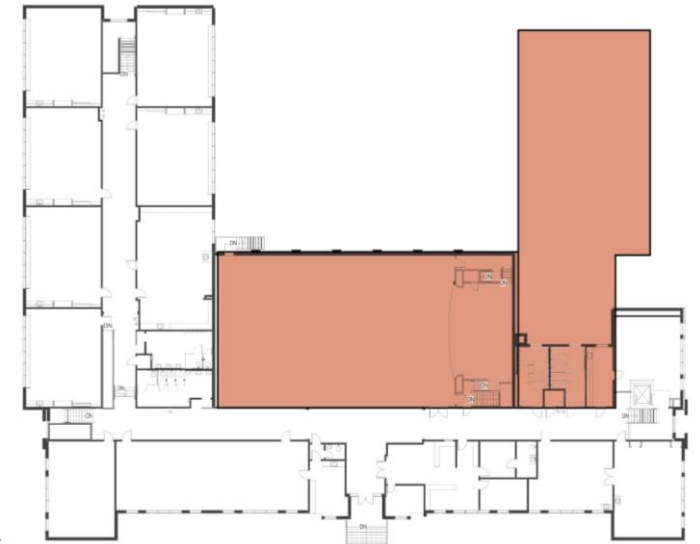
## OAK LODGE LIBRARY I CONCORD PROPERTY



**OPTION 1**  
LOWER LEVEL



**OPTION 2**  
LOWER LEVEL



**OPTION 3**  
UPPER LEVEL