

Performance Clackamas: Clackamas County Strategic Plan

January 2015



CLACKAMAS
COUNTY

AREA OF STRATEGIC FOCUS

Build a Strong Infrastructure

Goal: By 2019, 120 additional miles of county roads will be improved to 'good to excellent' status, a nine percent increase from 2014.

Why this is important:

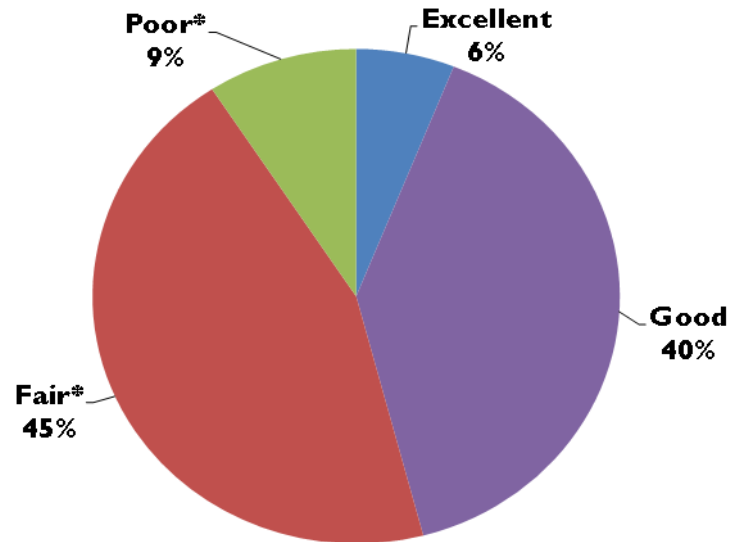
Well-maintained roads support public safety, economic growth and healthy communities, and save money in the long-run for drivers, taxpayers and government agencies.

How much does the County influence this?

Moderate and variable. Funds to maintain County roadways are only available through action of national, state and regional legislative bodies and/or support of local taxpayers. With sufficient funds, the County has the primary influence over maintenance of the roads it owns.

Where are we now:

As of 2014, 644 miles (46 percent) of Clackamas County roads are in 'good to excellent' condition.



AREA OF STRATEGIC FOCUS

Build a Strong Infrastructure

Goal: By 2019, I-205 expansion and Phase II Sunrise will be scheduled for state and regional funding within the next five years.

Why this is important:

These two projects ensure access to markets, ports and airports outside Clackamas County and are essential to the success of businesses in Clackamas County.

How much does the County influence this?

Minimal. Both projects are state projects requiring federal funds and the support of the state and the region in order to be implemented.

Where are we now: The County is working with its partners and legislators to gather support for these important projects.

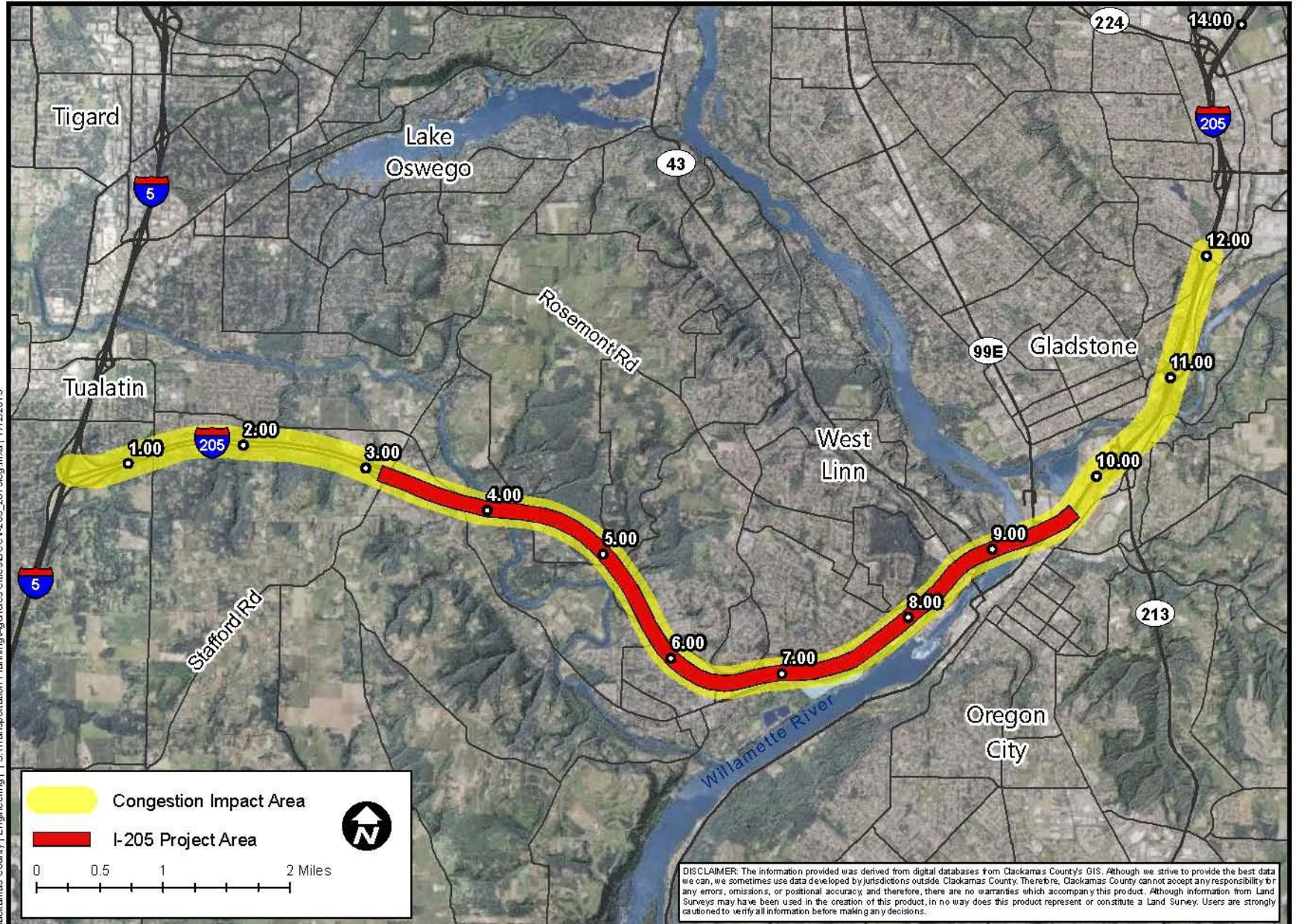
Both I-205 and Sunrise Phase II are:

- Identified by the Federal Highway Administration as a *Project of National and Regional Significance*
- Included in the County's Transportation System Plan (TSP)
- Included in the Regional Transportation Plan (RTP)
- On the County, State and Federal legislative agendas

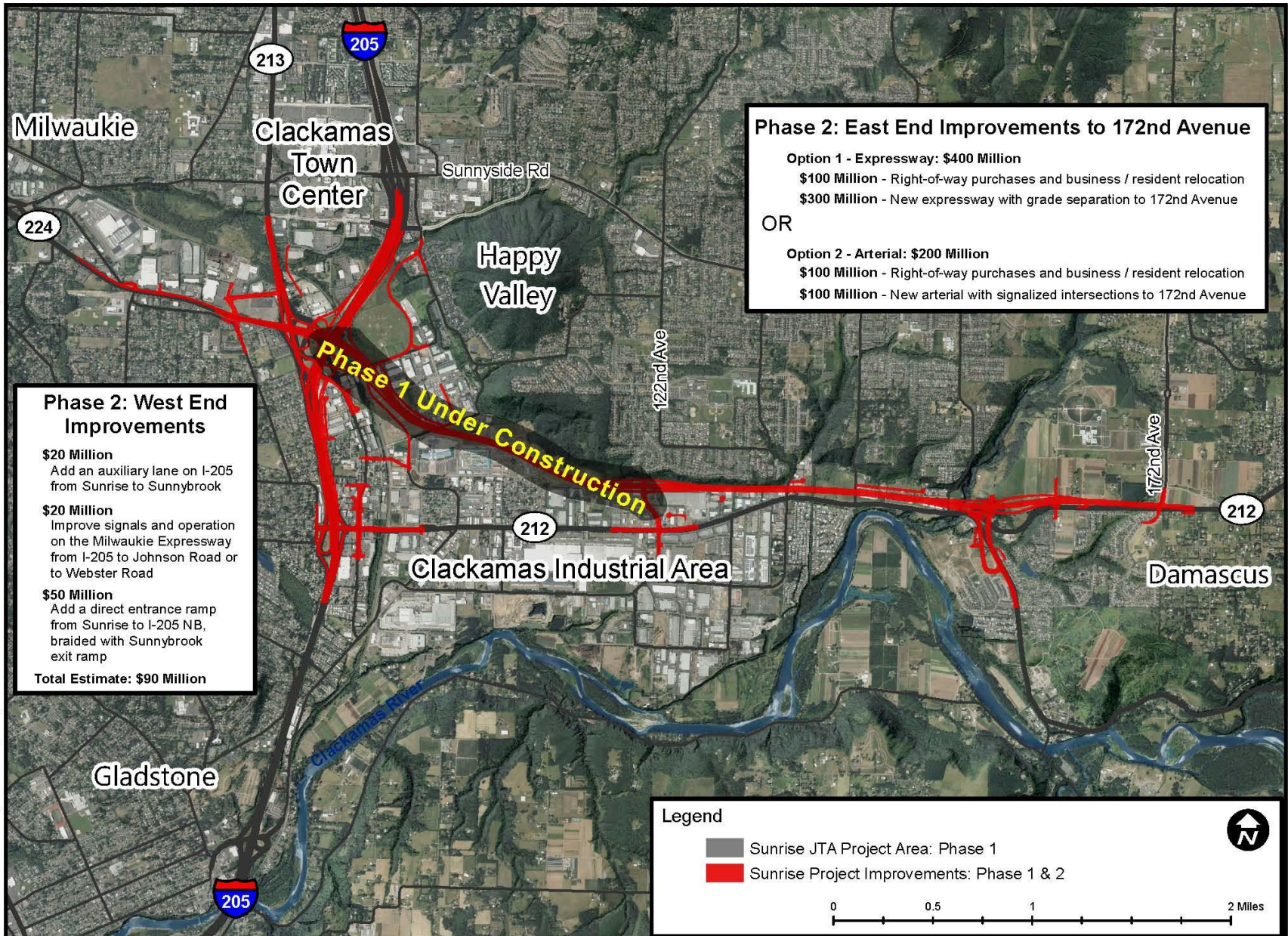
In addition:

- I-205:
 - Highlighted at the Oregon Business Plan Leadership Summit, Jan 6, 2015
- Sunrise Phase II:
 - Work on Sunrise Phase 1 began in 2013 and is expected to be completed in 2016
 - The Federal Highway Administration has signed the Record of Decision for the entire Sunrise Corridor Preferred Alternative

I-205 Operational Enhancements Project



Sunrise Project Improvements - Needed Projects



Phase 2: West End Improvements

- \$20 Million**
Add an auxiliary lane on I-205 from Sunrise to Sunnybrook
- \$20 Million**
Improve signals and operation on the Milwaukie Expressway from I-205 to Johnson Road or to Webster Road
- \$50 Million**
Add a direct entrance ramp from Sunrise to I-205 NB, braided with Sunnybrook exit ramp

Total Estimate: \$90 Million

Phase 2: East End Improvements to 172nd Avenue

Option 1 - Expressway: \$400 Million
 \$100 Million - Right-of-way purchases and business / resident relocation
 \$300 Million - New expressway with grade separation to 172nd Avenue

OR

Option 2 - Arterial: \$200 Million
 \$100 Million - Right-of-way purchases and business / resident relocation
 \$100 Million - New arterial with signalized intersections to 172nd Avenue

Legend

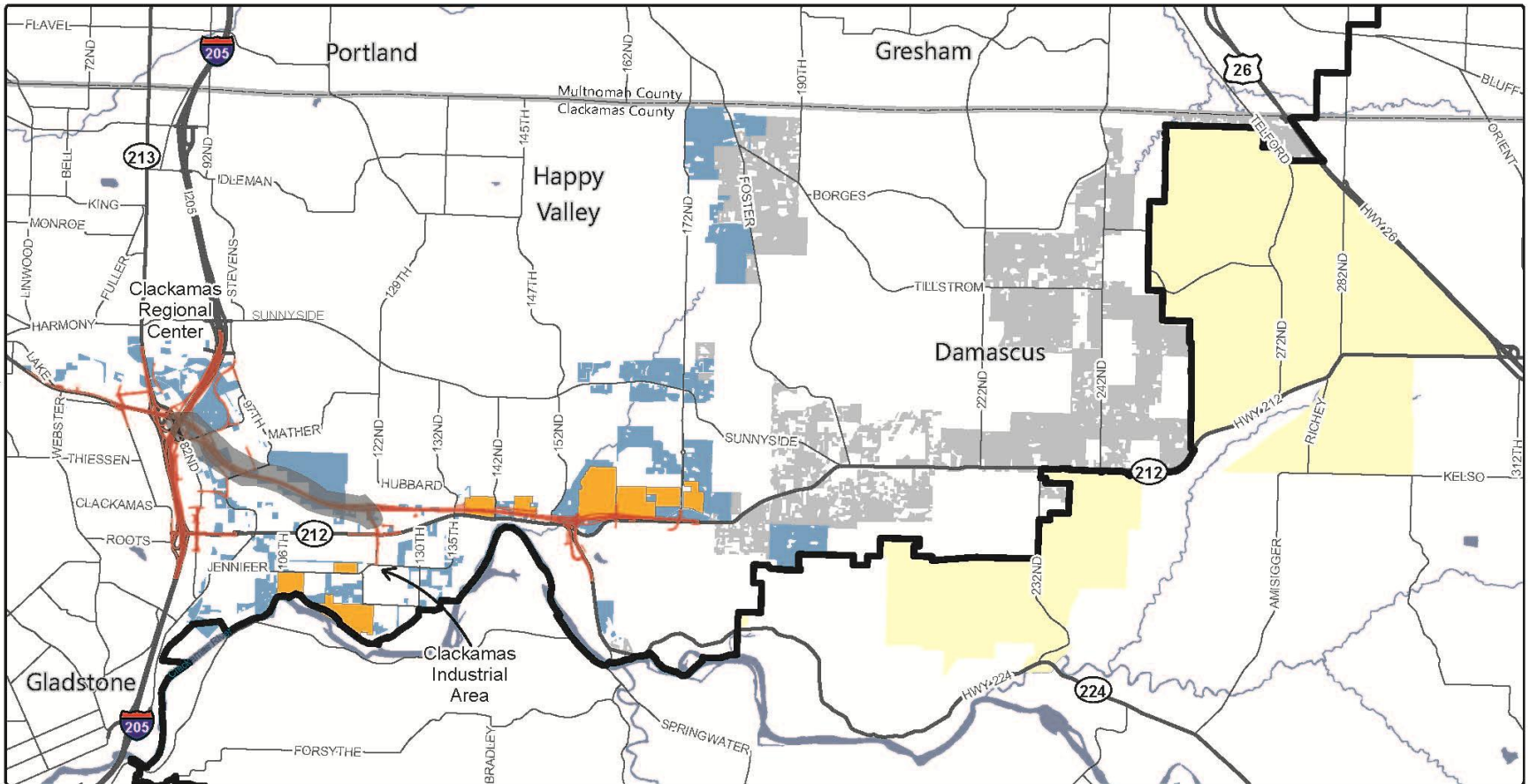
- Sunrise JTA Project Area: Phase 1
- Sunrise Project Improvements: Phase 1 & 2

0 0.5 1 2 Miles

Clackamas County | Engineering | Staff | S:\Transportation\Planning\Agencies\Chies\BCC\Sunrise_Project_Improvements.mxd | 1/28/2015

DISCLAIMER: The information provided was derived from digital databases from Clackamas County's GIS. Although we strive to provide the best data we can, we sometimes use data developed by jurisdictions outside Clackamas County. Therefore, Clackamas County cannot accept any responsibility for any errors, omissions, or positional accuracy, and therefore, there are no warranties which accompany this product. Although information from Land Surveys may have been used in the creation of this product, in no way does this product represent or constitute a Land Survey. Users are strongly cautioned to verify all information before making any decisions.

Sunrise Project Area - Employment Lands



LEGEND

- Development Ready Sites* (325 Gross Acres, 240 Net Acres)
- Vacant Employment Lands** (1,500 Gross Acres)
- Damascus Vacant Employment Lands*** (2,300 Gross Acres)
- Sunrise JTA Project Area: Phase 1
- Sunrise Project Improvements: Phase 1 & 2
- Urban Reserves
- County Boundary
- Urban growth boundary



* "Development Ready" employment lands identified by a Clackamas County Land Development Feasibility Study.

** Vacant Employment Lands data source: Metro RLIS Title 4 Land, Concept Centers and Vacant Land 2013.

*** Lands within the City of Damascus. Comprehensive Plan not yet adopted. Vacant employment lands are conceptual.

AREA OF STRATEGIC FOCUS

Build a Strong Infrastructure

Goal: By 2019, I-5 access to Canby will be placed in the State Transportation Improvement Program (STIP).

Why this is important:

Easy access to Interstate 5 is essential to the economic growth of many businesses in Canby and other areas of southwest Clackamas County, and the development of several shovel-ready industrial sites. Placing the project in the STIP will facilitate this critical connection.

How much does the County influence this?

Moderate. While this project is located in Clackamas County, it requires the support of the state and the region in order to be implemented.

Where are we now: The County is working with its partners and legislators to gather support for providing increased access to I-5 from Canby.

- In December 2014, County staff received a verbal commitment from the Oregon Department of Land Conservation and Development (DLCD) for a technical amendment to administrative rules to allow an exception for an adjusted alignment of the Arndt Road connector.
- In the meantime, Clackamas County will meet with area partners – including the City of Canby, 1000 Friends of Oregon and the Oregon Farm Bureau – to talk about the need for this project.
- The County's Transportation System Plan includes a need for a *Greater Arndt Rd/I-5/Canby Access Feasibility Study*.

AREA OF STRATEGIC FOCUS

Build a Strong Infrastructure

Goal: By June of 2016, Clackamas County will have a plan in place that will achieve sewer improvements and funding to support the expected 20-year growth horizon.

Why this is important:

Reliable, efficient sewer service is crucial to support economic and residential growth as well as healthy communities. Treatment capacity needs to be available in order to accommodate long-term growth in our region.

How much does the County influence this?

Major. Water Environment Services develops the plan and associated rate structure, which is ultimately approved by the Board of County Commissioners

Where are we now: WES is reviewing current treatment capacity and other system elements, identifying needs and initiating a public process to solicit input from key stakeholders.



AREA OF STRATEGIC FOCUS

Build a Strong Infrastructure

Goal: By 2016, the Master Plan for county facilities will be updated, including an assessment of the condition of county buildings and a funding plan.

Why this is important:

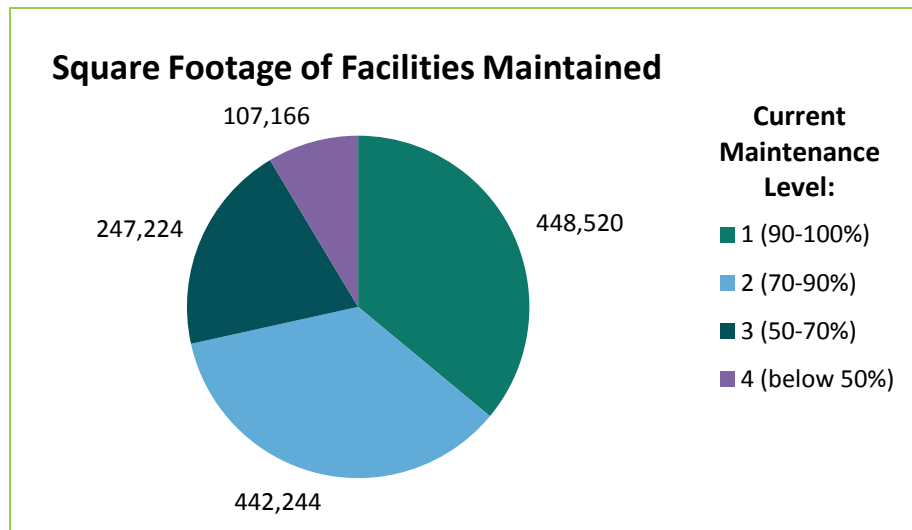
Well built and well maintained facilities are a sign of good stewardship of public resources, and provide a solid base from which to meet the needs of our customers and citizens.

How much does the County influence this?

Major – We are in control of the facilities planning, maintenance, and funding plans, though receiving the funding and implementing the plan will require cooperation and support from various partners.

Where are we now:

A work group is inventorying all County-owned and leased facilities, including those owned or operated by the County's Service Districts. A general conditions report will be forthcoming this summer to be followed by a long-term maintenance plan. County Administration will request initial funding for a facilities maintenance reserve fund in the FY 2015-16 budget.



AREA OF STRATEGIC FOCUS

Honor, Utilize, Promote and Invest in our Natural Resources

Goal: By 2019, federal lands in Clackamas County will produce \$6 million annually for the county.

Why this is important:

For more than 100 years, Counties received a share of federal timber sale receipts as compensation for non-taxable federal lands in the county. 54% of County lands are in federal forest ownership.

Changes in federal forest policies over the past 20 years have reduced federal timber harvests and associated county revenue by more than 75%. Secure Rural School funding offset so me of these losses for a time, but faces an uncertain future.

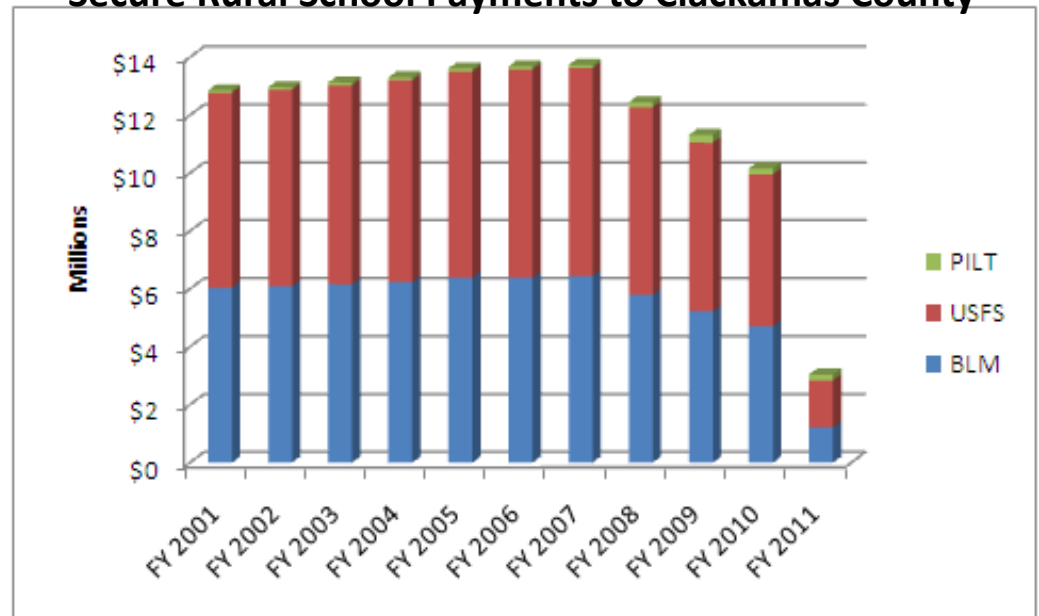
How much does the County influence this?

High. There is a critical need for new federal forestland management that can provide predictable timber harvests and certainty of revenue to counties with federal timberlands.

Clackamas County is one of 18 member O&C counties. Our proximity to the Portland region and a large urban population demonstrates to the congressional delegation that current federal forest practices impact many Oregon counties, not just rural counties.

Where are we now:

Secure Rural School Payments to Clackamas County



AREA OF STRATEGIC FOCUS

Honor, Utilize, Promote and Invest in our Natural Resources

Goal: By 2020, there will be a five percent annual increase in Gross Domestic Product (GDP) from agricultural lands in Clackamas County.

Why this is important:

Simply put, more GDP from agricultural lands means more prosperity in our rural areas.

How much does the County influence this? Moderate. Clackamas County is working to increase its influence through the creation of the Clackamas Food System ONEStop virtual partnership.

Clackamas County ranks in the top five of all Oregon counties for total farm gate sales. There is a growing trend towards buying locally produced food and organic products for all types, which is benefiting the Clackamas County agriculture and food production cluster.

Where are we now:

Census of Agriculture			
Current Stats for Clackamas County:	2012	2007	% Chg
Number of Farms	3,745	3,989	< 6%>
Land in Farms – acres	162,667	182,743	<11%>
Avg. Size of Farm - acres	43	46	< 7%>
Market Value of Products Sold* (Crops/Livestock)	\$325 million	\$397 million	<18%>
Oregon County Ranking (by Sales):	5	NA	NA

Source: US Dept. of Agriculture, 2012 Census of Agriculture

** Product Approach to calculating GDP*

AREA OF STRATEGIC FOCUS

Build a Strong Infrastructure

Goal: By 2020, five new, natural resource-based processors will be located in Clackamas County.

Why this is important:

With its wealth of natural resources, Clackamas County is a logical location for resource-based processors, which will provide more jobs and support economic development, particularly in the rural area and rural cities.

How much does the County influence this?

Moderate. The County can encourage processors to locate here and help identify appropriate sites, but the final decision is up to the processors.

Where are we now:

Current natural resource-based processors in Clackamas County include forest product mills, agricultural-based processors and mining operations. Other types of resource-based processing available includes the production of bio-fuels and primary processing of all types of forest products.

One agricultural -based processor (Lavender Farm) was recently approved by the BCC and at least one new mining application is anticipated in the near future.

The Planning and Zoning Division work program includes annual updates to all three natural resource zoning districts to comply with state law. These updates will provide property owners with permitting opportunities for the broadest range of natural resource-based processing facilities.

AREA OF STRATEGIC FOCUS

Honor, Utilize, Promote and Invest in our Natural Resources

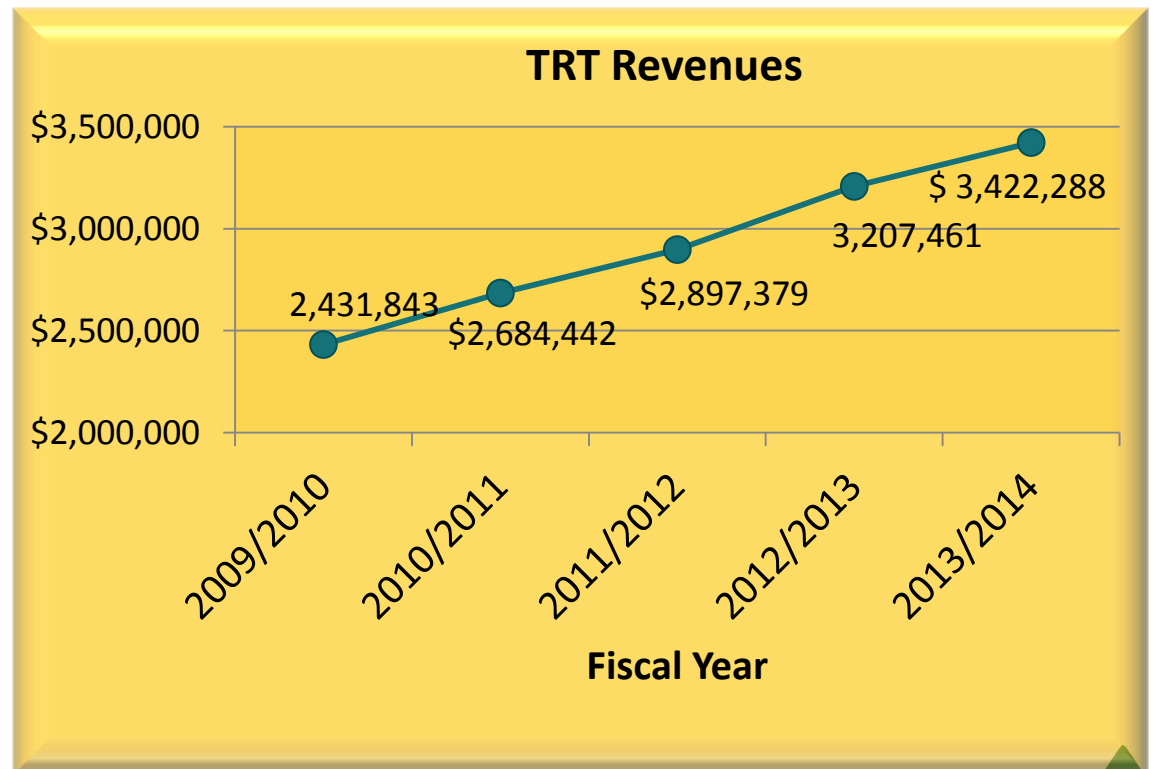
Goal: By 2020, there will be \$20 million in new capital investment in tourism-related facilities in Clackamas County

Why this is important: Tourism dollars bring “outside” money to the County’s economy, providing jobs and revenue. In addition, a vital tourism industry will help attract new industry to the County, as business seek locations that suit active lifestyles. New capital investment is a key sign of private sector interest..

How much does the County influence this?

Moderate. Clackamas County has an active tourism program, which reinvests transient room tax (TRT) dollars in tourism promoting activities.

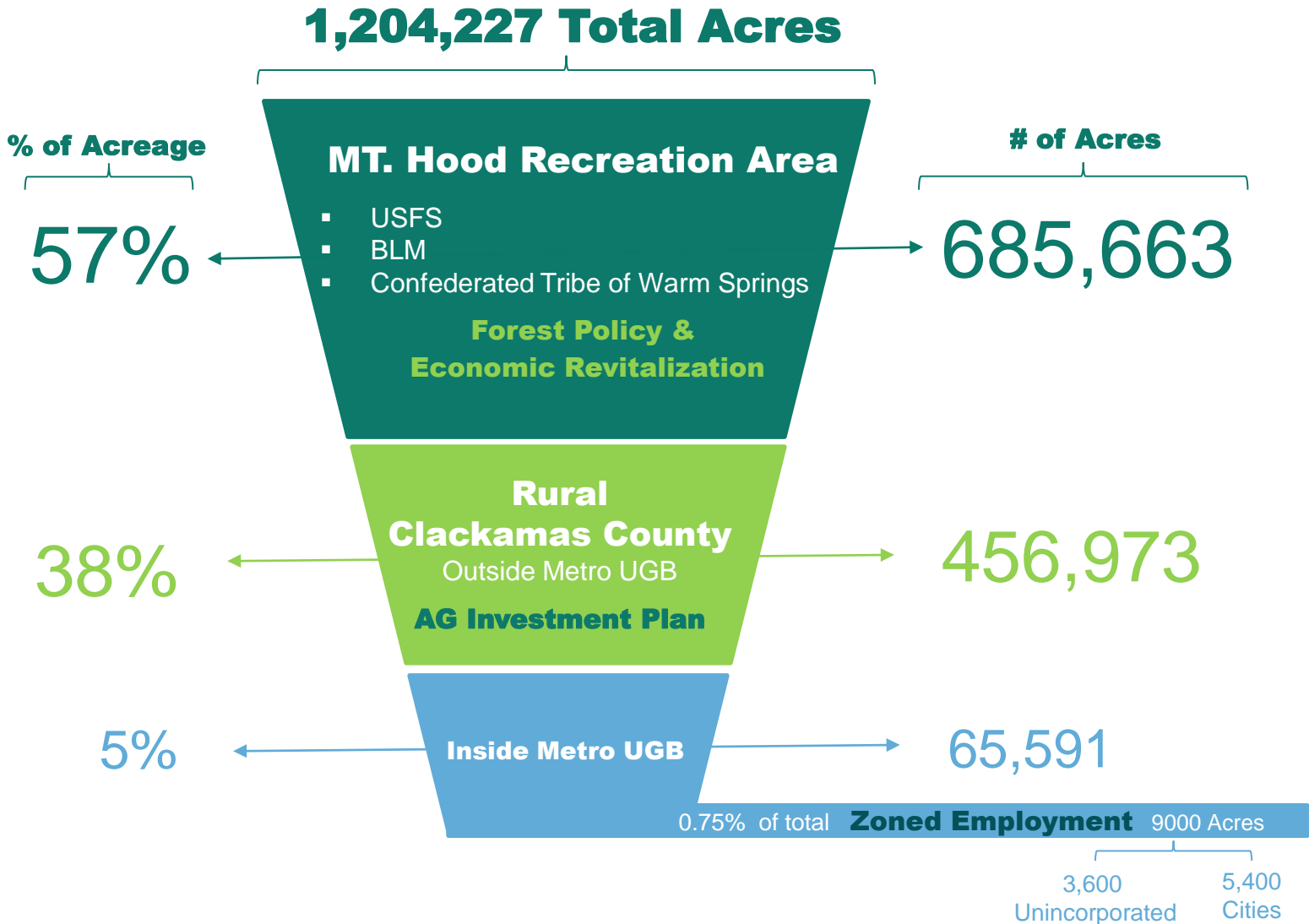
Where are we now:



AREA OF STRATEGIC FOCUS

Honor, Utilize, Promote and Invest in our Natural Resources

Goal:



AREA OF STRATEGIC FOCUS

Ensure Safe, Healthy and Secure Communities

Goal: *By 2018, Clackamas County will achieve a Community Rating System (CRS) score for flood safety of 4, resulting in substantial savings in flood insurance premiums for county residents.*

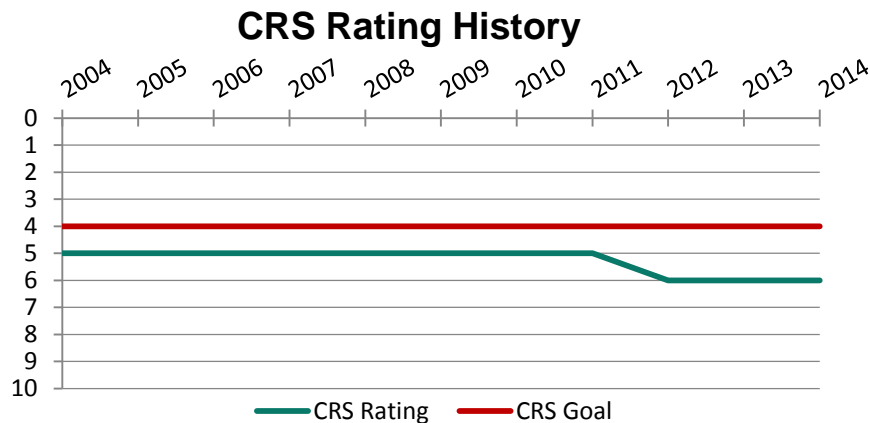
Why this is important:

Clackamas County is susceptible to a variety of natural disasters, including floods. An improved CRS score is a sign that the County, its communities, its businesses and residents are better prepared to cope with and recover from this common threat.

How much does the County influence this?

Moderate. Participation in the CRS program requires intensive efforts by the County, other jurisdictions, special service districts and other agencies.

Where are we now: *As of 2014, Clackamas County has a CRS rating of 6 and will be going through a CRS review in late March 2015. Additionally, we have engaged a consultant to provide a scope of work and cost information for future CRS work toward maintaining and improving the County's CRS rating per this goal.*



Departments Involved:

Transportation & Development, Emergency Management, Water Environment Services, Business & Community Services, Public & Government Affairs, Technology Services & County Administration