

CLACKAMAS COUNTY BOARD OF COUNTY COMMISSIONERS

Sitting/Acting as (if applicable) Policy Session Worksheet

Presentation Date: May 16, 2017 **Approx Start Time:** 10:30 AM **Approx Length:** 20 min

Presentation Title: Board of Health Orientation including Triennial Review Requirements

Department: Health, Housing & Human Services, Public Health

Presenters: Rich Swift and Dawn Emerick

Other Invitees:

WHAT ACTION ARE YOU REQUESTING FROM THE BOARD?

EXECUTIVE SUMMARY: The Health, Housing and Human Services Department's Public Health Division serves as the county's Local Public Health Authority (LPHA). In turn, the Clackamas County Board of County Commissioners serve as the County's Board of Health. The LPHA is contracted with the State of Oregon, specifically the Oregon Health Authority, to administer 10 required public health services to the residents of Clackamas County. This Policy Session is intended to provide an orientation of the responsibilities of the Board of Health and to ensure the understanding of a recent Oregon Health Authority audit on Public Health's 10 required services. The Oregon Health Authority will deliver this audit report to the Board of County Commissioners/Board of Health at the end of May 2017.

FINANCIAL IMPLICATIONS (current year and ongoing):

Is this item in your current budget? YES NO

What is the cost? \$ NA

What is the funding source? NA

STRATEGIC PLAN ALIGNMENT:

- How does this item align with your Department's Strategic Business Plan goals? The Board of County Commissioners, by state law, also serve as the Board of Health. This orientation is necessary to build understanding regarding governance and operations of the county's Local Public Health Authority,
- How does this item align with the County's Performance Clackamas goals? Operating as an informed and effective Board of Health is essential for protecting the health of all residents of Clackamas County.

LEGAL/POLICY REQUIREMENTS: NA

PUBLIC/GOVERNMENTAL PARTICIPATION: NA

OPTIONS: NA

RECOMMENDATION:

ATTACHMENTS:Power Point Presentation

SUBMITTED BY:

Division Director/Head Approval _____

Department Director/Head Approval _____

County Administrator Approval _____

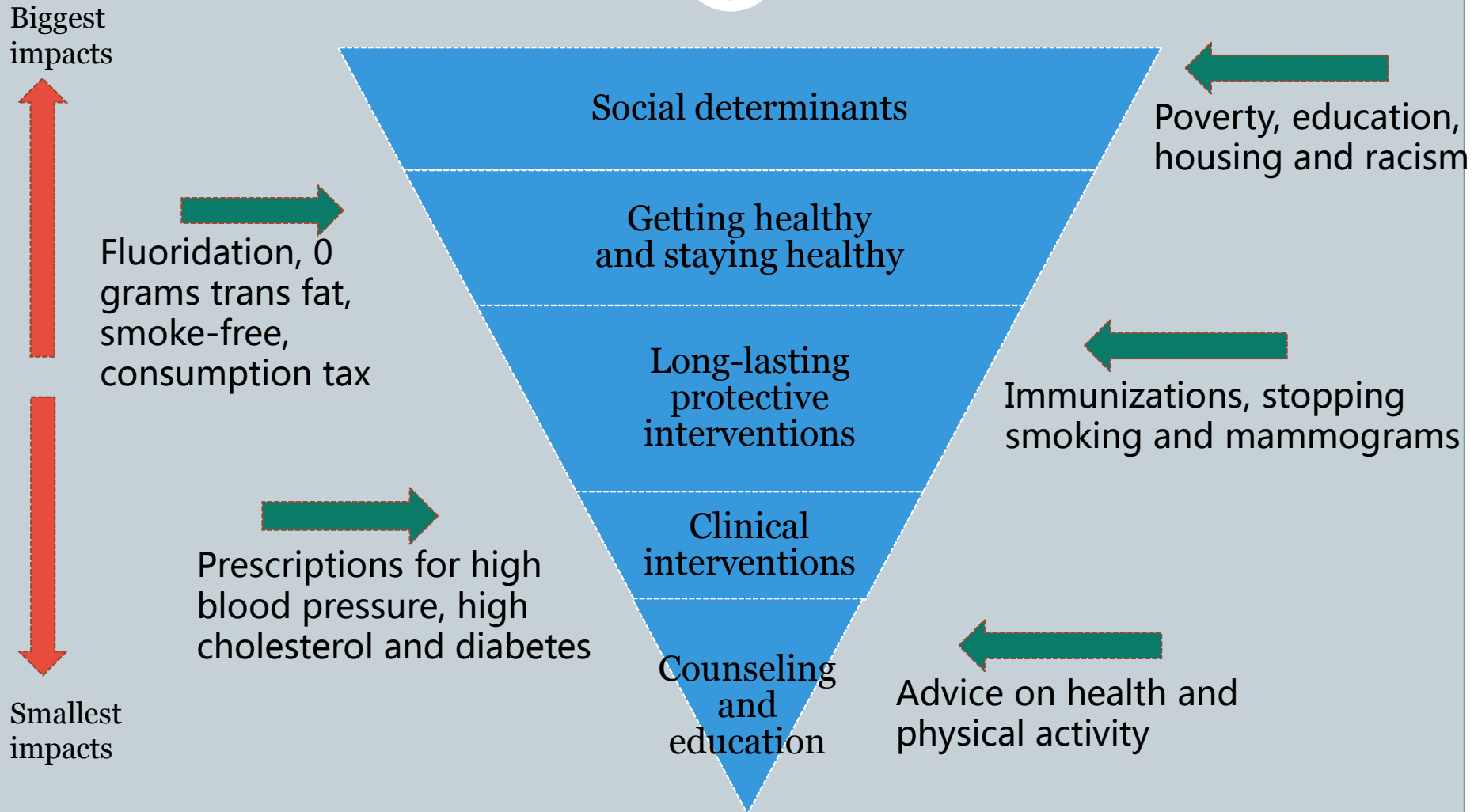
For information on this issue or copies of attachments, please contact Dawn Emerick @ 503-655-8479

Local Public Health Authority and Board of Health Responsibilities



**DAWN EMERICK, DIRECTOR
PUBLIC HEALTH DIVISION**

Factors that affect our health



10 Essential Public Health Services



1. Monitor health status to identify community health problems.
2. Diagnose and investigate health problems and health hazards in the community.
3. Inform, educate and empower people about health issues.
4. Mobilize community partnerships to identify and solve health problems.
5. Develop policies and plans that support individual and community health efforts.

10 Essential Public Health Services



6. Enforce laws and regulations that support individual and community health efforts.
7. Link people to needed personal health services and assure the provision of health care when otherwise unavailable.
8. Assure a competent public health and personal healthcare workforce.
9. Evaluate effectiveness, accessibility, and quality of personal and population-based health services.
10. Research for new insights and innovative solutions to health problems.

Who Has Public Health Authority in Oregon?



- State Public Health Division, Public Health Director
- Boards of Health
- Local Public Health Authorities
- Local Public Health Administrators
- State and local health officers

State Public Health Division Authority



- Direct supervision and authority over public health in Oregon (ORS 431.110)
- Ultimately responsible for enforcing public health laws (ORS 431.120, 431.150, 431.155, 431.170, 432.262)
- Enhanced authority during a public health emergency (ORS 431.264, 433.443)
- Distributes funds to LPHAs (ORS 431.380)

Local Public Health Authority



- On-the-ground provision of public health services. Minimum activities required in law (ORS 431.416):
 - Control of disease
 - Parent and child health services
 - Environmental health services
 - Health information and referral services
 - Collecting and reporting health statistics
- Administering and enforcing state and local public health laws
- Other activities specified in state/LPHA financial services contract

ORS 431.150, 431.157, 431.262, 431.416, 446.425, 448.100, 624.510

Public Health Enforcement Authority



- State and local public health authority have authority to:
 - Investigate possible violations of law
 - Issue subpoenas, orders, civil penalties
 - Seek court orders to enforce public health law
 - Require removal or abatement of toxic substances
 - Refer matters for possible criminal prosecution

Triennial Review



- Comprehensive reviews of local county health departments are conducted every three years
- Assess compliance activities of local health departments, evaluate overall program effectiveness, and recommend modification to programs
- The results of the review are to the Local Public Health Authority and the County Health Administrator