

Clackamas County Climate Action Plan

“Business as Usual” Modelling Results

SSC *whatIf?*



The background of the slide features a light blue sky with white clouds. Overlaid on this are several large, semi-transparent blue geometric shapes, specifically triangles and polygons, which create a complex, layered pattern. A horizontal white band runs across the middle of the slide, serving as a backdrop for the title text.

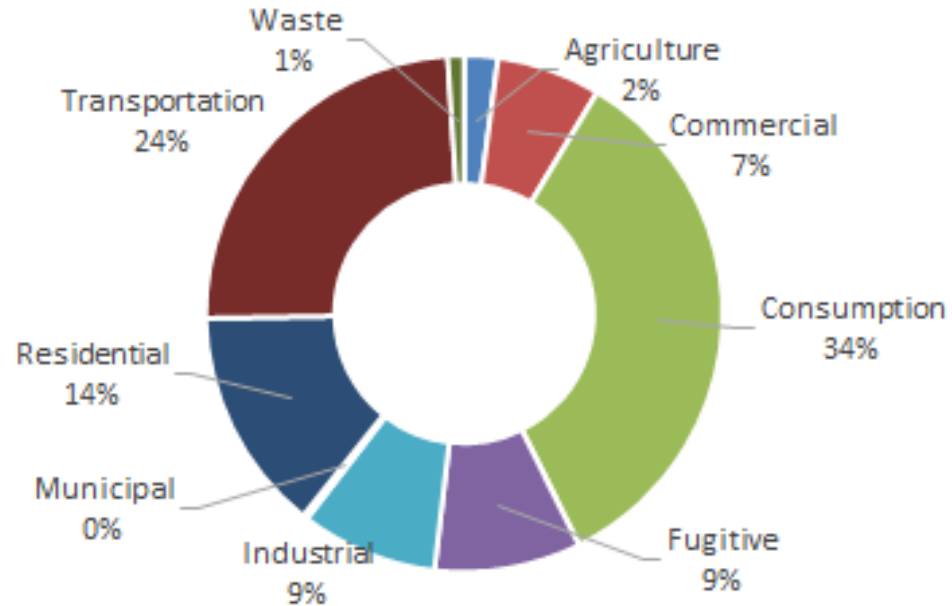
2018 GHG Inventory

Total Emissions by Sector - 2018

Total 2018 Emissions

**7,217,727
Metric tonnes
CO₂e**

2018 Greenhouse Gas Emissions by Sector



Emissions Sources

Sector	Energy-based	Non-energy-based
Stationary Emissions		
Residential, Commercial and Municipal	✓	
Industrial	✓	✓
Transportation	✓	
Agriculture	✓	✓
Waste and Wastewater		✓
Fugitive Emissions		✓
Consumption		✓



Projecting 2018 Emissions Forward: The “Business as Usual” Scenario

What does the “Business as Usual” modelling provide?

- A projection of Clackamas County’s GHG 2018 energy use and emissions forward to 2050...



What is the “Business as Usual” scenario?

- ... adjusted to reflect expected:
 - Demographics
 - Land development and new construction
 - Federal and State regulations such as building and energy efficiency codes
 - Fuel sources for electricity generation
 - County Strategies and Policies
 - Temperature
 - Uptake of new, emissions-free technologies



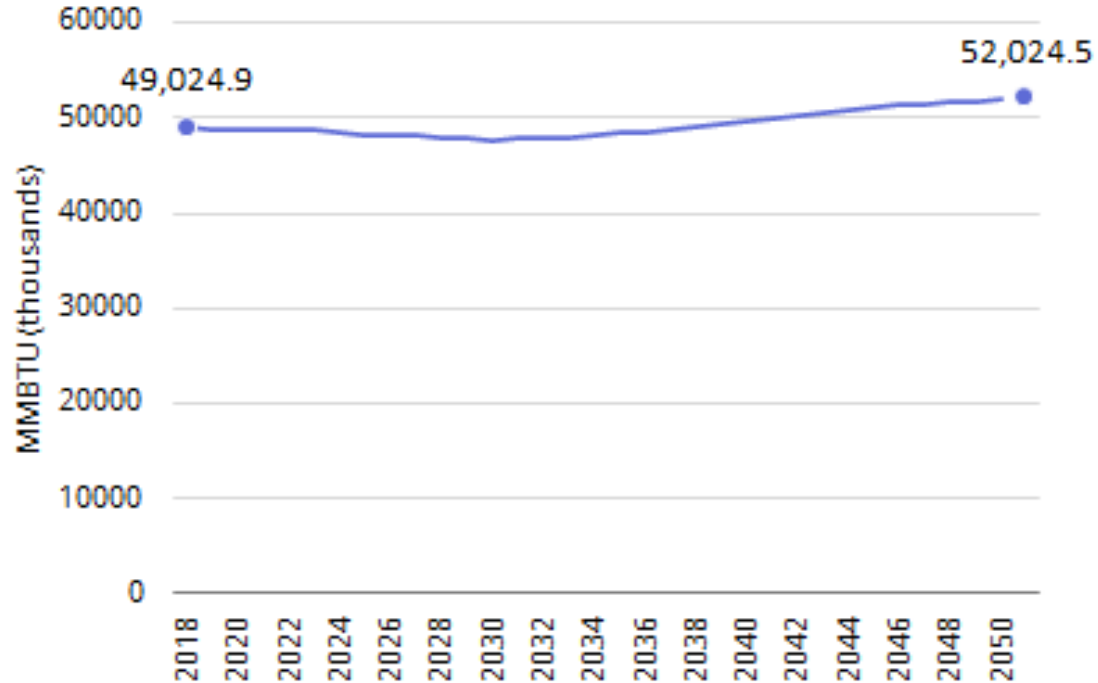
The background of the slide features a light blue sky with soft white clouds. Overlaid on this are several large, semi-transparent geometric shapes in various shades of blue. These shapes are composed of a network of thin, light-blue lines that form a series of interconnected triangles and polygons, creating a complex, crystalline pattern. The overall effect is a modern, tech-oriented aesthetic.

“Business as Usual” Energy Use

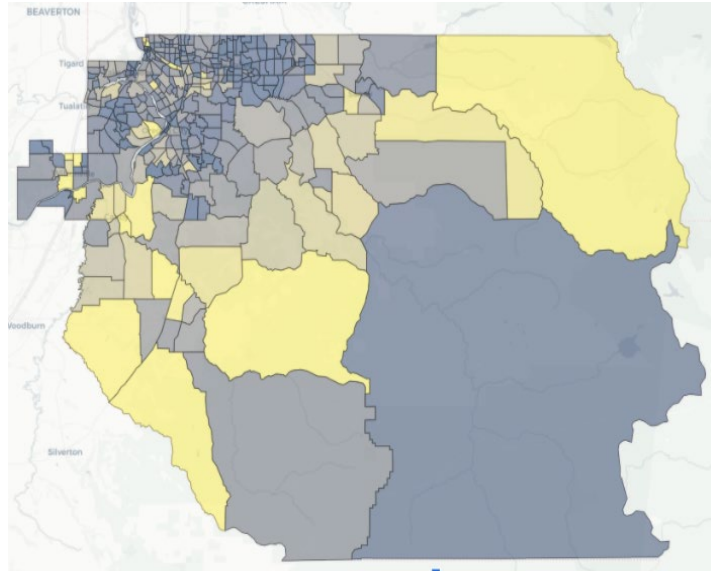
What is Clackamas County's "Business as Usual" energy use?

Total
projected
energy use
(MMBTU)

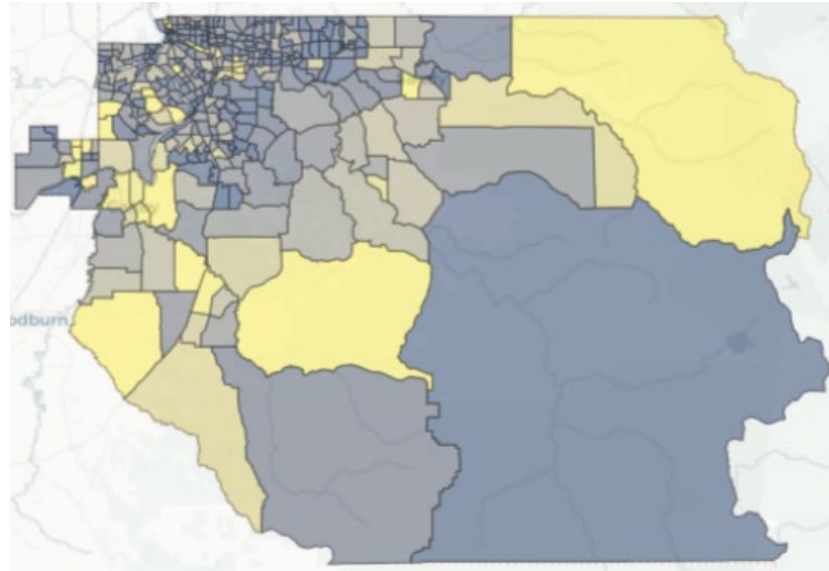
6% increase



Stationary Energy Use



2018



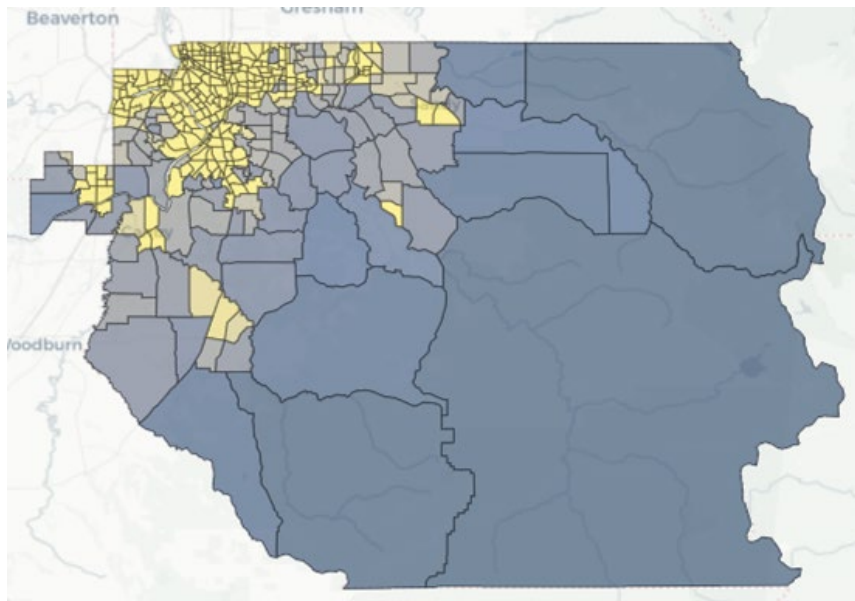
2050

MMBTU

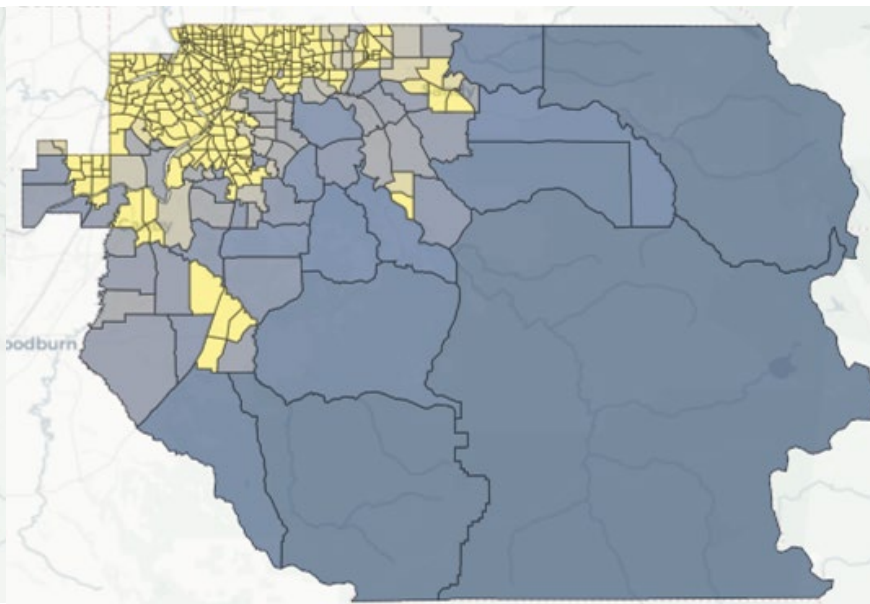


Stationary Energy Use Density

MMBTU/ha



2018



2050



The background of the slide features a light blue sky with soft white clouds. Overlaid on this are several large, semi-transparent geometric shapes in various shades of blue. These shapes are composed of a network of thin, light-blue lines that form a series of interconnected triangles and polygons, creating a complex, crystalline pattern.

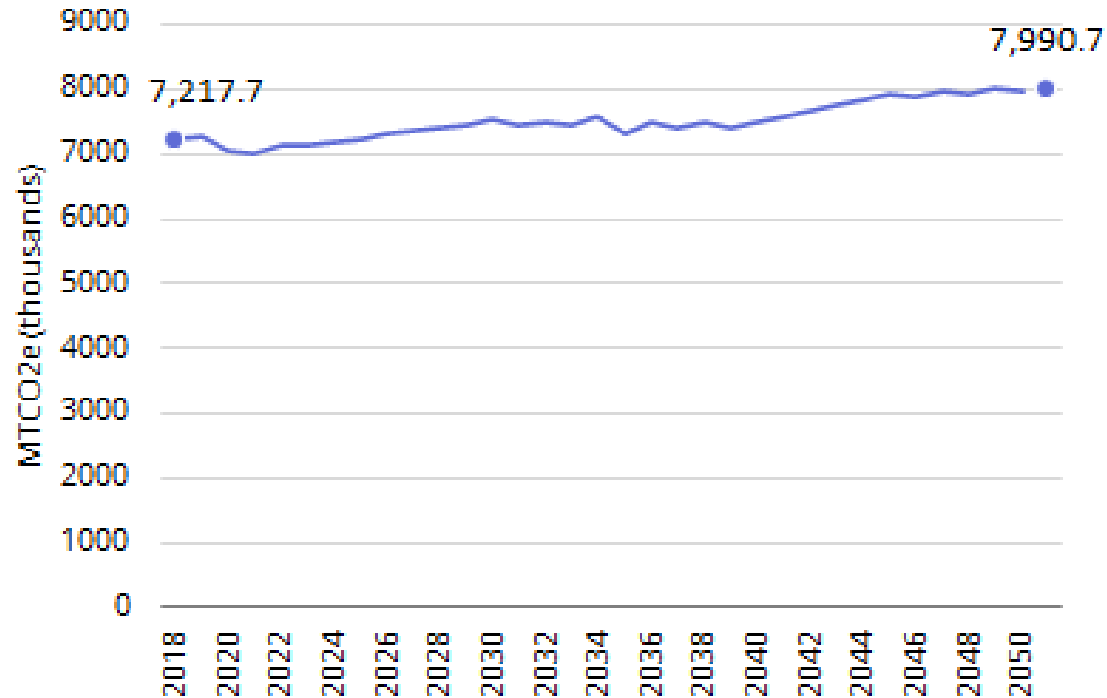
“Business as Usual” Emissions

What are Clackamas County's "Business as Usual" emissions?

Total 2050 Emissions

**7,990,700
metric tonnes
CO₂e**

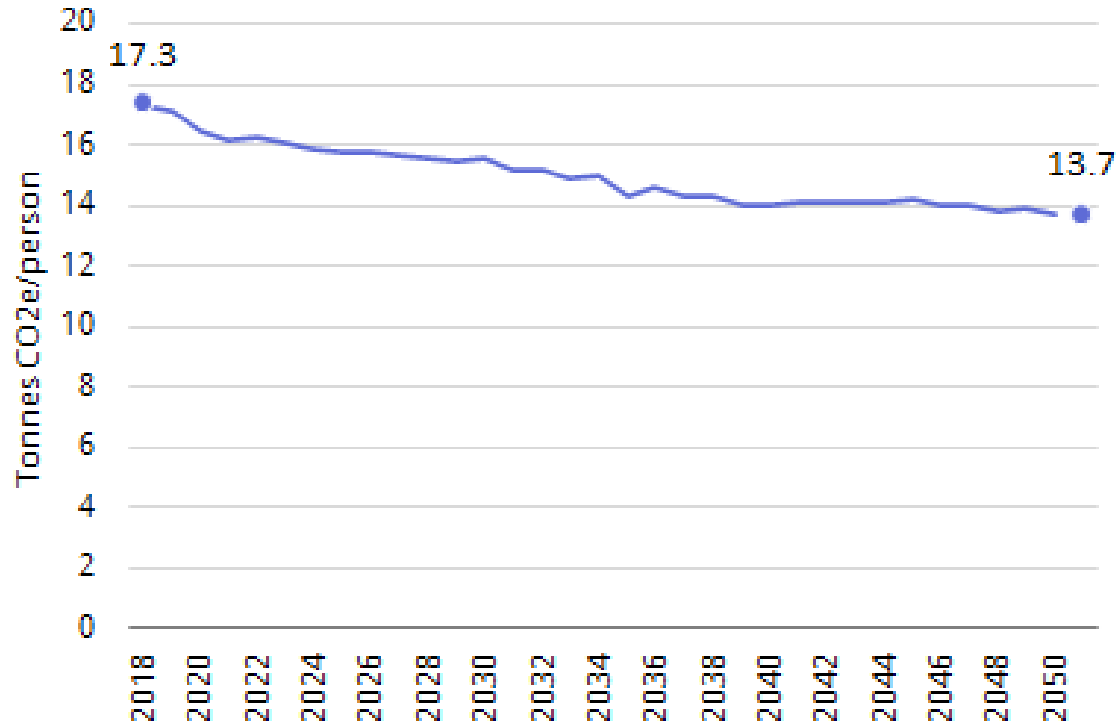
11% increase



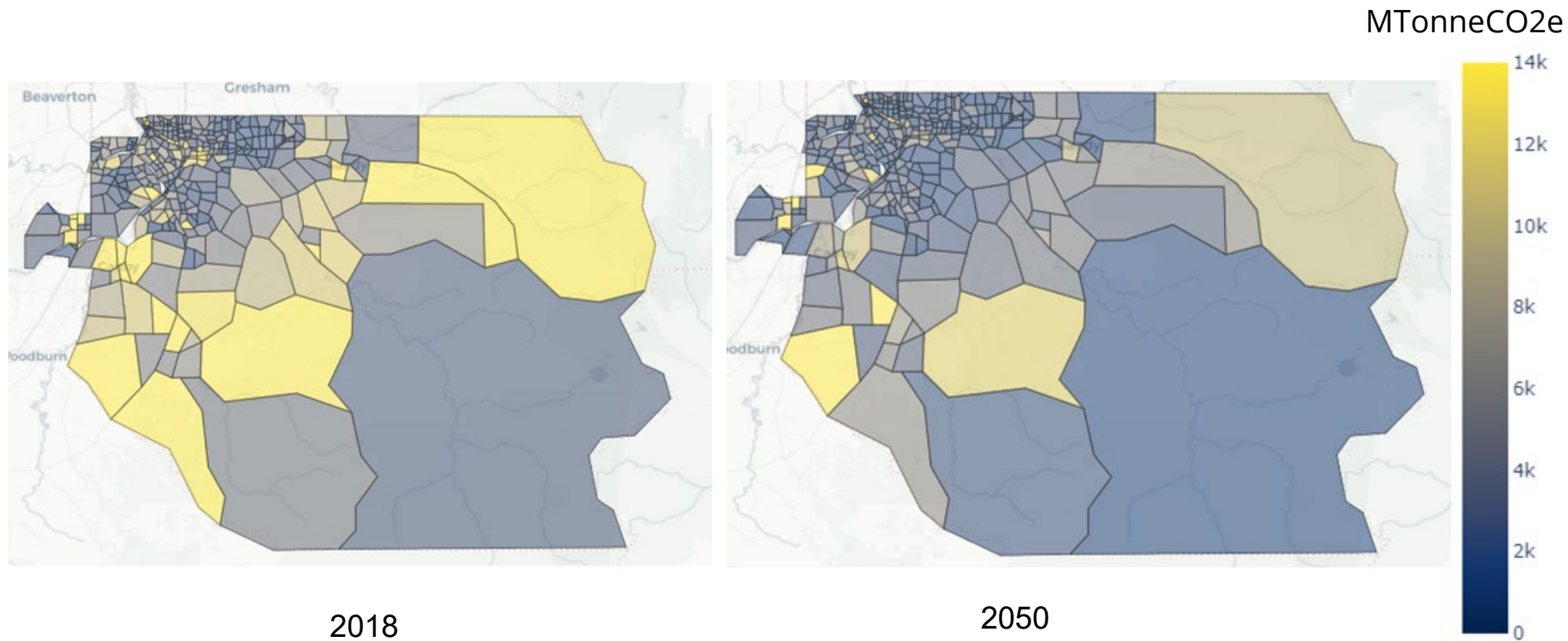
What are Clackamas County's "Business as Usual" emissions?

Per capita
emissions

21% decrease

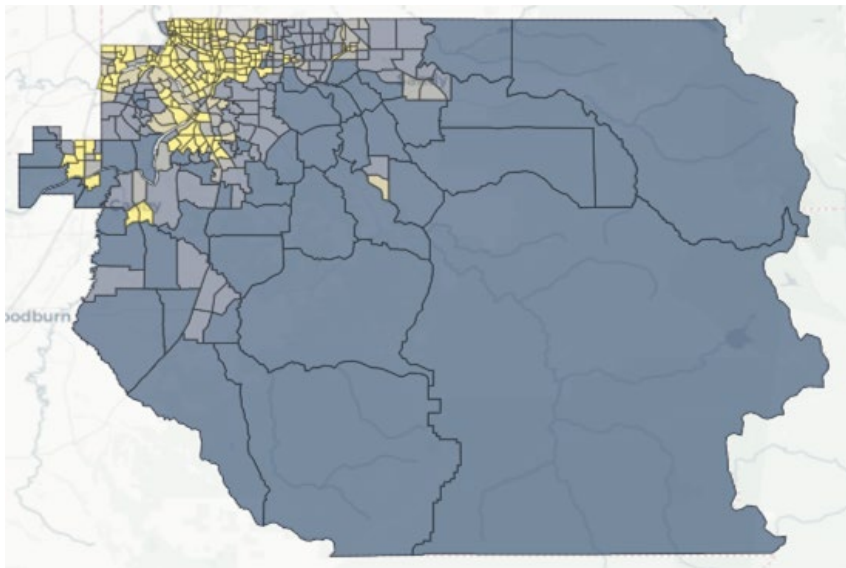


Stationary Emissions

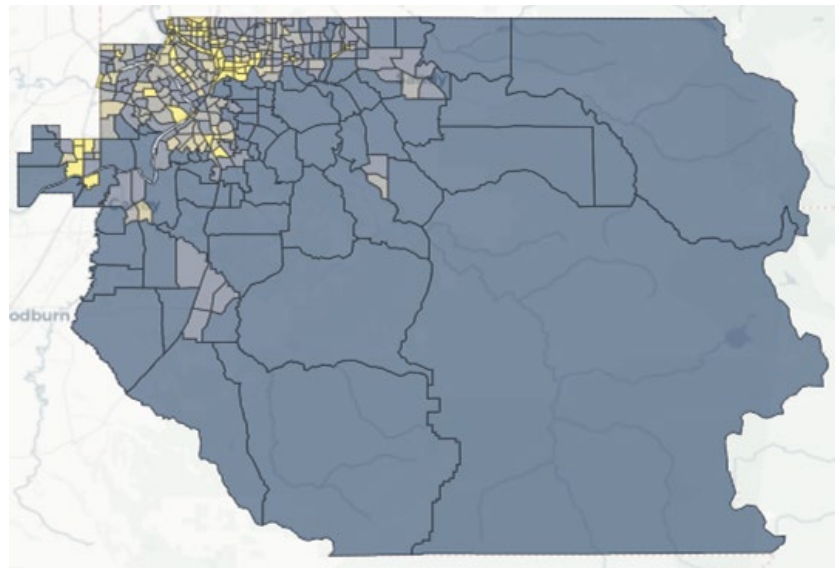


Stationary Emissions Density

MTonne
CO₂e/ha

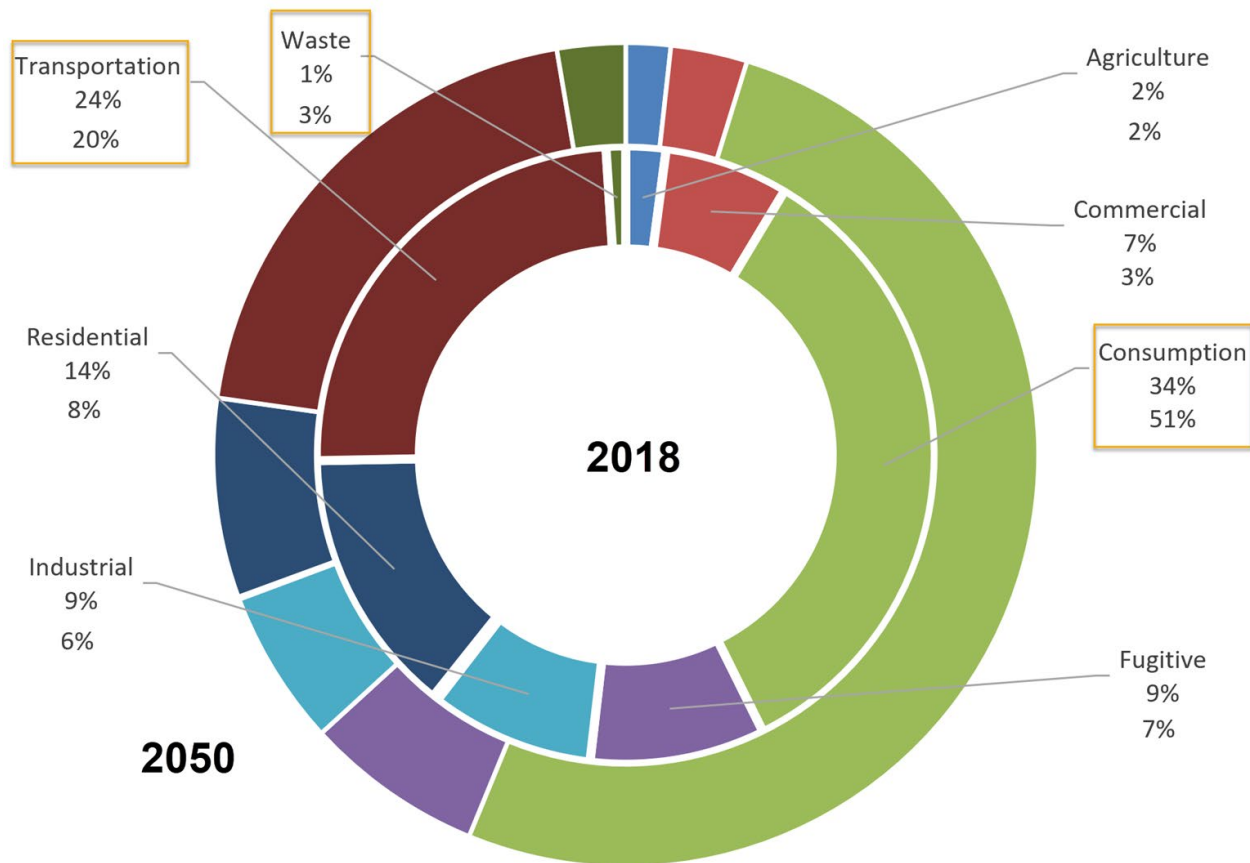


2018

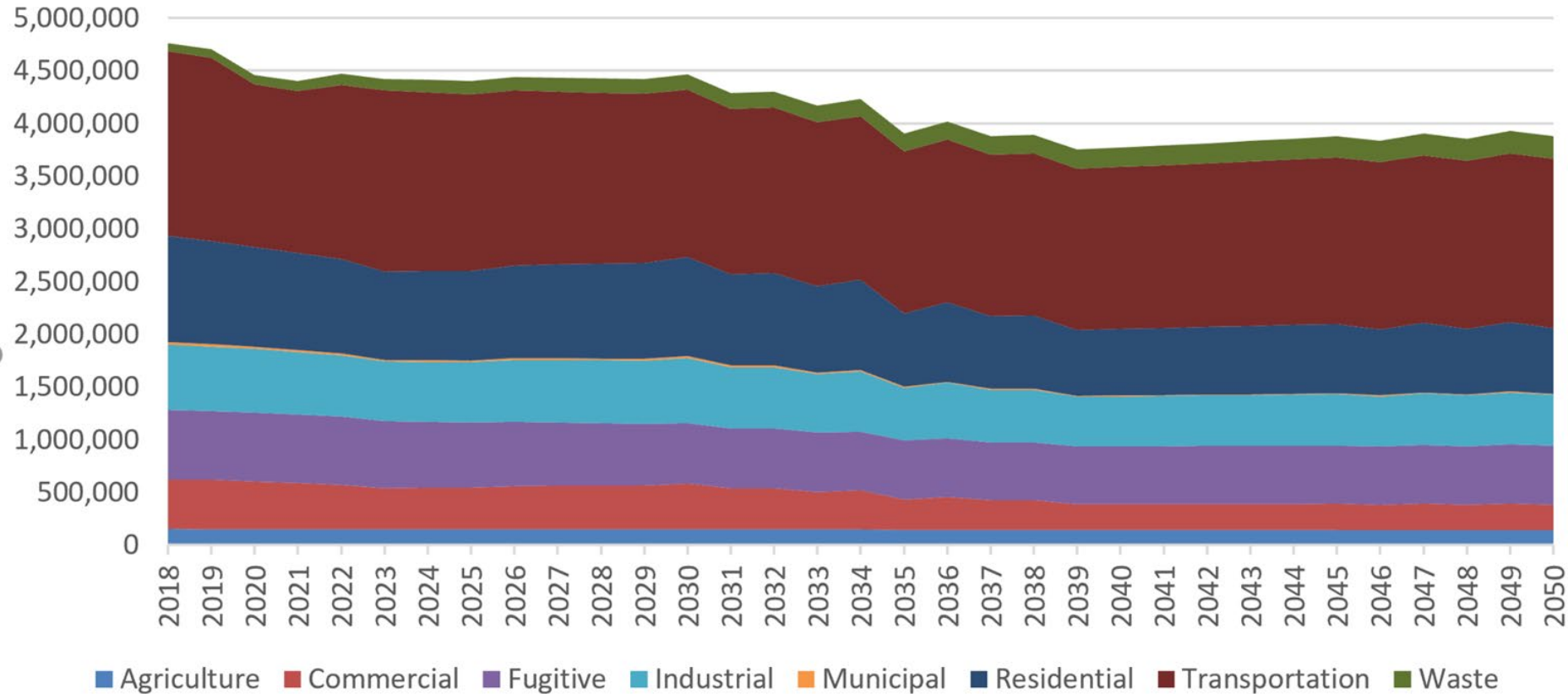


2050

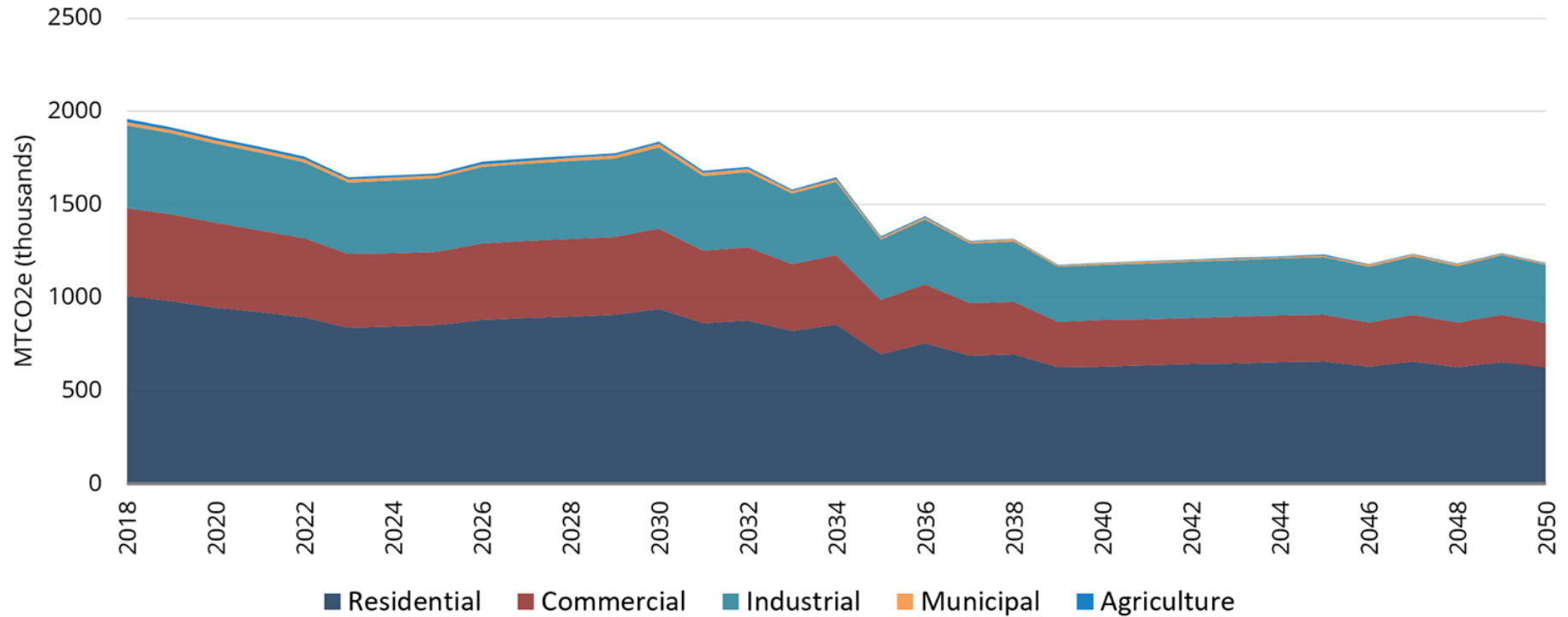
Proportions of Emissions Sources in 2018 vs. 2050



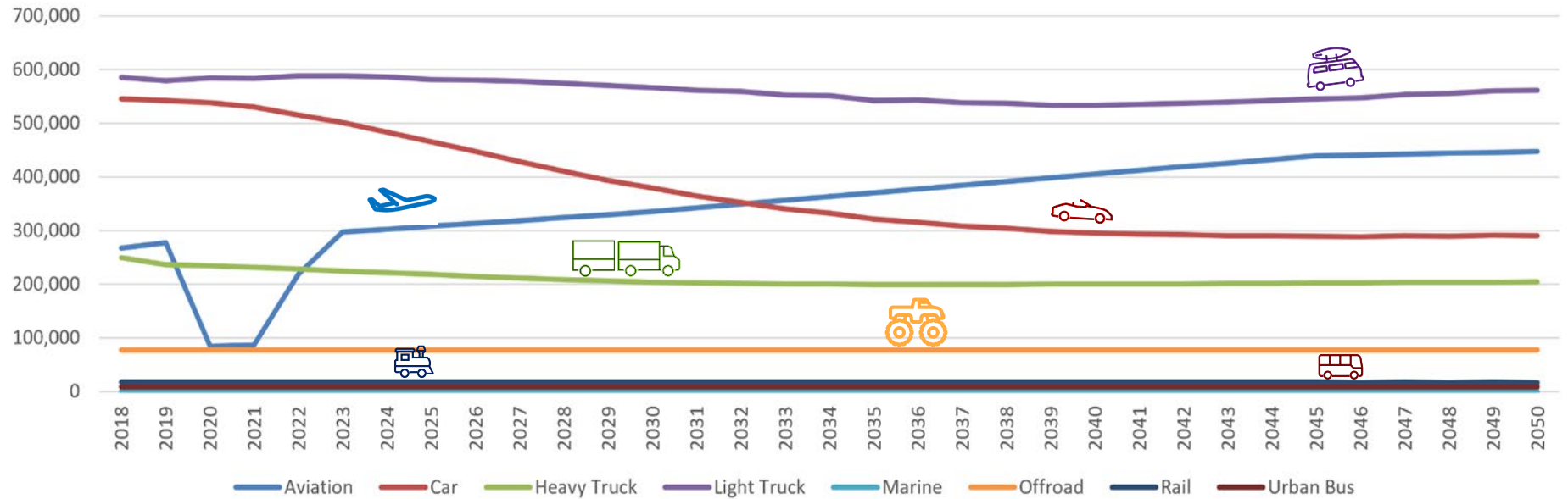
Emissions by Sector over Time - without Consumption Emissions



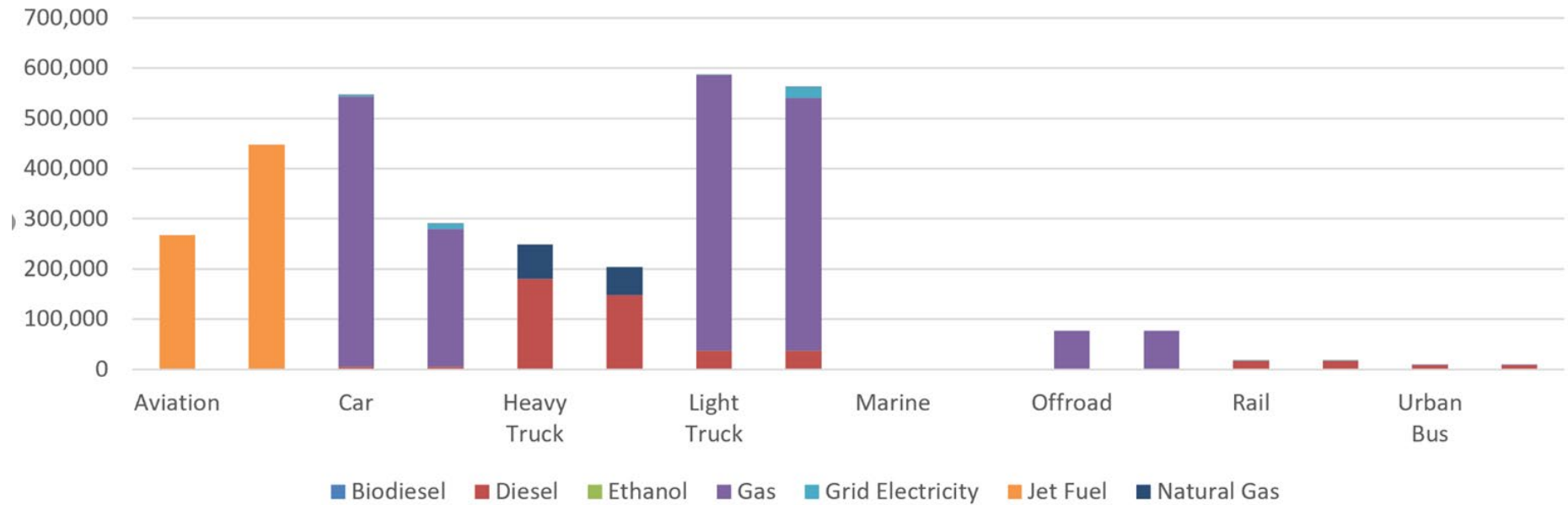
Building Emissions over Time



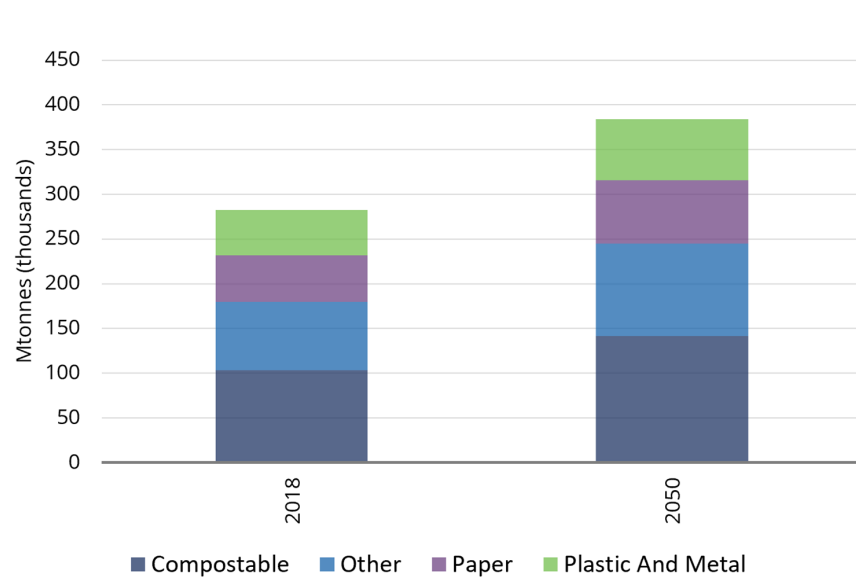
Transportation Emissions by Mode over Time



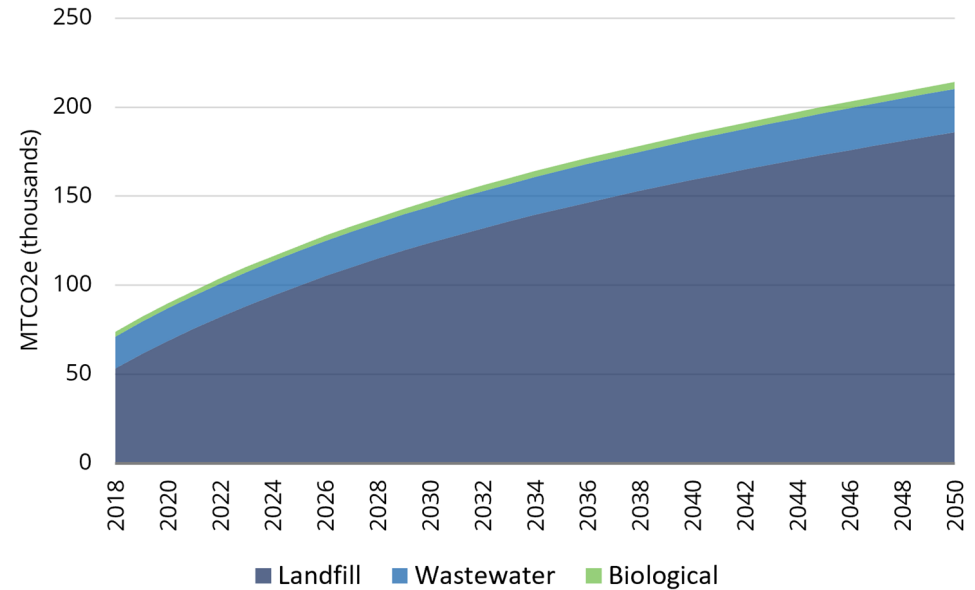
Transportation Emissions by Mode and Fuel over Time



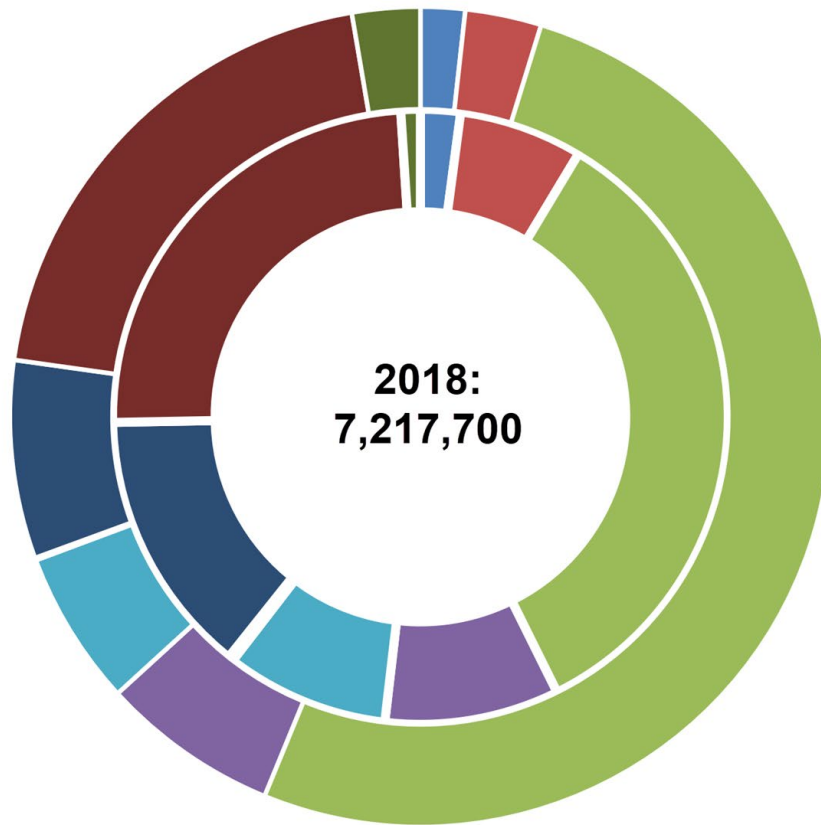
Waste Tonnage and Emissions



MTonnes of Raw Waste



MTonnes of Emissions from Waste



2050:
7,990,700

The background of the slide features a complex pattern of overlapping blue triangles and lines, creating a geometric, crystalline effect. A horizontal band of a real sky image with white clouds is visible through the center of the geometric pattern.

~ Questions ~

