



**ELECTIONS DIVISION**  
825 PORTLAND AVENUE  
GLADSTONE, OR 97027

**JOHN KAUFFMAN**  
COUNTY CLERK

# CLACKAMAS COUNTY VOTERS' PAMPHLET

1, 2, 4

## SPECIAL ELECTION


November 2, 1999



---

**VOTED BALLOTS MUST BE  
RECEIVED IN THE ELECTIONS  
OFFICE OR AT ANY  
DROP SITE LOCATION  
(LISTED ON PAGE 12)  
BY 8:00 P.M. ON TUESDAY,  
NOVEMBER 2, 1999  
TO BE COUNTED.**

---

 Please **RECYCLE** this pamphlet with your newspapers!



# CLACKAMAS COUNTY

Office of the County Clerk

JOHN KAUFFMAN  
CLERK

719 MAIN STREET  
OREGON CITY, OR 97045  
(503) 722-2745  
FAX (503) 650-3563

October, 1999

Dear Clackamas County Voter:

This Voters' Pamphlet contains information designed to assist you in voting. It contains explanatory statements and arguments regarding the Clackamas County Law Enforcement Local Option Tax Measure as well as measures presented by the cities of Canby and West Linn.

Please remember, in order to vote on the city measures you must be a registered voter as well as a resident of the specific city. Your vote-by-mail ballot, therefore, will not contain all of the measures listed in this Voters' Pamphlet.

Your voted ballot must be received in the Elections Office, 825 Portland Avenue, Gladstone, OR, by 8:00 PM on election night to be counted. Postmark does not count. If you prefer, instead of mailing your ballot, you may take it to the Elections Office or to one of the Drop Site Locations listed on page 12 of this pamphlet. Drop boxes will be available at these locations from October 15 through 8 PM on Tuesday, November 2.

If a ballot was delivered to your residence for someone who should no longer be receiving ballots at your address, please write "RETURN" on the envelope and place it back in your mail box. If a ballot was sent to someone who is deceased, please write "DECEASED" on the envelope and place it back in your mailbox.

Information about voter registration is on page 3 of this pamphlet.

The address for Internet access for election results is on page 11.

If you have any questions about this election, or the elections process, please call the Elections Office at (503) 655-8510.

Sincerely,

John Kauffman  
Clackamas County Clerk

BOARD OF PROPERTY TAX APPEALS  
719 MAIN STREET  
OREGON CITY, OR 97045  
(503) 655-8662  
FAX (503) 650-3563

ELECTIONS DIVISION  
825 PORTLAND AVENUE  
GLADSTONE, OR 97027  
(503) 655-8510  
FAX (503) 655-8461

PRINTING DIVISION  
2100 KAEN ROAD  
OREGON CITY, OR 97045  
(503) 655-8337  
FAX (503) 557-5883

RECORDING DIVISION  
807 MAIN STREET - ROOM 104  
OREGON CITY, OR 97045  
(503) 655-8551  
FAX (503) 650-3035

RECORDS MANAGEMENT DIVISION  
999 LIBRARY COURT  
OREGON CITY, OR 97045  
(503) 655-8323  
FAX (503) 655-8195

# M E A S U R E S

	PAGE
County Law Enforcement Local Option Tax (Measure 3-67) .....	4
City of Canby Annexation of 1.45 Acres (Measure 3-65) .....	6
City of Canby Annexation of 1.44 Acres (Measure 3-66) .....	8
City of West Linn Library Bond Authorization (Measure 3-64) .....	10

MEASURE ARGUMENTS PRINTED AS FILED.

# V O T E

## VOTER REGISTRATION INFORMATION

### YOU MAY REGISTER TO VOTE IF:

1. You are a citizen of the United States
2. You will be 18 or older on election day and
3. You are a resident of Oregon.

### YOU MUST UPDATE YOUR REGISTRATION IF:

1. Your residence or mailing address changes
2. Your name changes or
3. You wish to change political affiliation.

To be eligible to vote you must be registered by the close of business on the 21st day before an election.

If you have any questions on registration or updating your registration, contact:

**CLACKAMAS COUNTY ELECTIONS**  
825 PORTLAND AVENUE  
GLADSTONE, OR 97027-2195  
PHONE: (503) 655-8510  
TDD/TTY: (503) 655-1685

Registration cards are located in DMV offices, post offices, libraries and other locations throughout the county. Call (503) 655-8510 for the location nearest you.

# CLACKAMAS COUNTY

## Measure No. 3-67

### BALLOT TITLE

#### FOUR YEAR LAW ENFORCEMENT LOCAL OPTION TAX

**QUESTION:** Shall Clackamas County levy \$.41 per \$1000 assessed value, beginning 2000-2001, for capital projects and operations for law enforcement services?

This rate would be imposed for four years. This measure may cause property taxes to increase more than three percent.

**SUMMARY:** This measure may be passed only at an election with at least a 50 percent voter turnout.

If this measure is approved it would provide an estimated \$35,501,148 over a four year period for law enforcement. The money would go to the Sheriff's office, District Attorney's office, Community Corrections and Juvenile Department. Planned expenditures include additional staff and programs for each of those offices. The primary uses of this levy are to improve the county-wide corrections capacities and programs for adult and juvenile offenders. The Juvenile Department will be able to specifically address the 11% of juvenile offenders responsible for 75% of juvenile crime. The jail capacity will be expanded to accommodate the growth of the County and eliminate the need for early release of people charged with serious crimes. The District Attorney and Community Corrections Department will initiate or expand programs to serve victims of crime and develop community based corrections programs. By law, money raised by this levy can only be used for law enforcement purposes.

It is estimated the proposed rate will raise \$8,115,260 in 2000-2001, \$8,602,176 in 2001-2002, \$9,118,306 in 2002-2003, and \$9,665,405 in 2003-2004.

If this measure is not approved, there would be reductions in personnel and services provided by the Sheriff's Office and related criminal justice programs. Passage of this measure would allow criminal justice programs to keep pace with increasing service demands.

(This information submitted by the  
Board of County Commissioners of Clackamas County.)

### EXPLANATORY STATEMENT

Passage of this measure would allow Clackamas County to levy taxes outside the current tax base for four fiscal years, 2000-01, 2001-02, 2002-03, and 2003-04. The local option tax would be limited to those four years, and any additional local option tax would be subject to approval by the voters. By law the money raised by this measure could only be used for law enforcement purposes as stated in the ballot title.

The Sheriff's Office, the District Attorney's Office, the Juvenile Department, and Community Corrections are funded by a permanent tax rate. Previously these agencies were funded by way of a renewable three-year serial levy.

This measure will supplement declining funding for the Sheriff's Office, District Attorney, Juvenile Department, and Community Corrections. Supplemental funding is needed in order to maintain current levels of services, and meet anticipated future impacts on law enforcement delivery among the Sheriff's Office, District Attorney, Juvenile Department, and Community Corrections.

The money raised by this measure will be used to handle current and anticipated increases in jail population, and increased demand for investigative services within the Sheriff's Office. Remaining money raised by this measure will be used to fund increased demands for prosecution of criminals through the District Attorney's Office, and funding of Juvenile Court and prevention and abuse programs aimed at preventing crime. The rate for the local option tax would be 41 cents per \$1000 assessed value. The rate would be the same over the four years. The local option is expected to raise \$8,115,260 in 2000-2001, \$8,602,176 in 2001-2002, \$9,118,306 in 2002-2003, and \$9,665,405 in 2003-2004.

## CLACKAMAS COUNTY

**Measure No. 3-67****ARGUMENT IN FAVOR**

In the past 5 years, Clackamas County prosecutors, police, corrections officers and courts have coordinated efforts in ways that make sense and produce results. The levy will continue this progress.

In January 2000, Clackamas County will begin treating drug users through a treatment-required Drug Court. Funding court-monitored drug treatment will reduce property crime by eradicating a major reason for theft. Levy funds will support a facility for treatment of child abuse and neglect victims and property crime prosecutions will continue at the current zero-tolerance level.

Urbanization and city crime has not destroyed county livability because county law enforcement is technically up-to-date and capable of protecting people and property. We cannot afford to let down our guard as growth pushes Clackamas County's limits. 1998 saw the county death rate due to drunk driving plummet as the rates in other counties soared. Juvenile crime is being counteracted as never before. Crime victims receive round-the-clock services and higher financial compensation for their losses. Law enforcement agencies have consolidated efforts to avoid duplication and there is less passing the buck from agency to agency than has been the case historically. Cost effective ideas have been implemented and are working.

Passage of the levy will not mean pay raises for police, prosecutors or jailers. The levy's purpose is to maintain the balanced law enforcement system we have and allow the system to provide incarceration, drug and alcohol treatment, and child abuse intervention services for those who need and deserve them. As one who is responsible for maintaining a credible law enforcement system, I am asking for your support to maintain Clackamas County's livability as a safe place to live, work and recreate - a place where all provable crimes are prosecuted and innocent people are protected.

(This information submitted by  
Terry Gustafson, Clackamas County District Attorney.)

The printing of this argument does not constitute an endorsement by Clackamas County, nor does the county warrant the accuracy or truth of any statement made in the argument.

**ARGUMENT IN FAVOR**

The Sheriff's Office, District Attorney, Juvenile Department, and portions of Community Corrections are funded by permanent tax rates. However, growth in Clackamas County has created a greater need for services, and this need has surpassed the dollars available to fund essential criminal justice services.

On November 2, 1999, you the voter will have an opportunity to provide for the continuation of professional law enforcement services in Clackamas County.

A vote for the Four Year Law Enforcement Local Option Tax will provide additional jail capacity and eliminate the need for early release of persons charged serious crimes. The Juvenile Department will be able to specifically address the 11% of juvenile offenders responsible for 75% of juvenile crime. The District Attorney and Community Corrections Department will initiate or expand programs to service victims of crime and develop community based corrections programs.

Passage of the measure will ensure citizens, who live, work and recreate in Clackamas County will continue to receive professional law enforcement services.

This year the Sheriff's Office will book approximately 16,000 persons into the Jail. As the County continues to grow this number will rise. A vote for this measure will allow for jail expansion into facilities currently occupied by the Department of Corrections, but will soon be turned over to the County. Staying ahead of the need for jail space will help keep serious offenders locked up, and out of our communities.

Over the years you have made a sound investment in the Sheriff's Office and the County's criminal justice system. Please help in protecting your investment by voting **YES** on the Four Year Law Enforcement Local Option Tax.

(This information submitted by Larry A. Wright,  
Citizen's for Effective Law Enforcement.)

The printing of this argument does not constitute an endorsement by Clackamas County, nor does the county warrant the accuracy or truth of any statement made in the argument.

# CLACKAMAS COUNTY

# CITY OF CANBY

## Measure No. 3-67

## Measure No. 3-65

### ARGUMENT IN FAVOR

As your Sheriff, there have been a couple of very important priorities for my office. These priorities are shared with the District Attorney, Juvenile Department and Community Corrections Department.

One of those priorities has been to create a cost-effective and coordinated system of law enforcement and public safety for Clackamas County.

The other has been to develop that system so that it is ready to meet the increasing demands that the growth of the region have created. Our belief is that preparation for new demands is far more effective and much less costly than having to react to problems after they become ingrained in our communities.

It is evident to me that the people of Clackamas County share these priorities. You have had the opportunity to help guide the direction and development of this system through input to our offices and by voicing your support at the ballot box. Citizens of this County have approved dedicated law enforcement funding measures for many years. The results of that support are evident in the level of public safety and neighborhood quality of life we continue to enjoy.

I am asking Clackamas County voters to support our continued efforts. On your November, 1999 ballot is measure 3-67, a four-year dedicated law enforcement local option tax measure. If approved, this measure will allow us to operate 160 additional Jail beds that the County is acquiring from the State at no cost to local taxpayers. It will expand programs to address major crime, property crimes and drugs. It will allow the intense supervision of those 11% of juvenile offenders who commit 75% of juvenile crime. It will increase the supervision and treatment of adults on parole or probation. And, it will improve services to victims of crime.

These steps are necessary to maintain our priorities I have described. Please continue your support for a safe community with a "yes" vote for measure 3-67. Thank You.

(This information submitted by Ris Bradshaw, Sheriff.)

**NO ARGUMENTS IN OPPOSITION TO THIS MEASURE WERE FILED.**

The printing of this argument does not constitute an endorsement by Clackamas County, nor does the county warrant the accuracy or truth of any statement made in the argument.

### BALLOT TITLE

#### MEASURE APPROVING ANNEXATION OF 1.45 ACRES INTO CITY OF CANBY

**QUESTION:** Shall 1.45 acres located on the Southeast corner of NE 22nd Avenue and N. Locust Street be annexed into the Canby City limits?

**SUMMARY:** Annexation is the legal process to bring property inside the City limits. Bud and JoAnn Fawver, as applicants, have asked the City to bring 1.45 acres of land into the City limits. The legal description of the property is Tax Lot 402 of Tax Map 3-1E-28DB. It is located on the southeast corner of NE 22nd Avenue and N. Locust Street. Properties to the south and east of the site are inside the City and are designated low density residential. Property to the west is not within the City but is within the Urban Growth Boundary (UGB). Property to the north is both outside the City and the UGB. This application has previously been approved by the Planning Commission and City Council. The proposal could allow development of the property for low density residential use. Future development requires City review and must comply with land use laws.

### EXPLANATORY STATEMENT

This measure would approve the annexation of 1.45 acres into the city limits of the City of Canby. The property which would be included within the City boundaries is known as Tax Lot 402 of Tax Map 3-1E-28DB and is located on the southeast corner of NE 22nd Avenue and N. Locust. Tax lot 402 is currently zoned RFFF5 (Rural Residential Farm and Forest - 5 acre Minimum Lot Size). If annexation into the City is approved by the voters, the property would be zoned Low Density Residential as required under the City's Comprehensive Land Use Plan (Comp Plan). Currently, the property contains three residences and other outbuildings.

Bud and JoAnn Fawver, as owners and applicants, applied to the City of Canby for approval of their annexation request as allowed by Oregon law. The City, following its Charter, has put this matter before the voters for approval.

Under the City of Canby's Comp Plan, the zoning for this property, should it be annexed, is low density residential. The maximum number of single-family homes that could be built on this property is a total of seven (7). However, annexation alone does not set the future uses to be built on the property. Any development would have to comply with state and local land use laws and would be subject to public review.

The Canby Comp Plan also designates properties for annexation as Priority "A", "B" or "C". Priority "A" properties shall generally be annexed prior to those areas shown as Priority "B" which, in turn, shall generally be annexed prior to those areas shown as Priority "C". The proposed annexation by the Fawvers is designated Priority "A" property. The Canby Planning Commission approved this annexation application by a 7-0 vote and the City Council approved the application by a 5-0 vote.

(This information submitted by Chaunee Seifried, Canby City Recorder-Pro tem.)

**NO ARGUMENTS IN FAVOR OF OR IN OPPOSITION TO THIS MEASURE WERE FILED.**

# City of Canby Measure 3-65



CONTINUED



CITY OF CANBY

## Measure No. 3-66

### BALLOT TITLE

#### MEASURE APPROVING ANNEXATION OF 1.44 ACRES INTO CITY OF CANBY

**QUESTION:** Shall 1.44 acres located on the Southwest Corner of NE Territorial Road and N. Redwood Street be annexed into the Canby City limits?

**SUMMARY:** Annexation is the legal process to bring property inside the City limits. Asset Development Group, as the applicant, and Dick and Joan Hawley as owners, have asked the City to bring 1.44 acres of land into the City limits. The legal description of the property is Tax Lot 1700 of Tax Map 3-1E-27CB. It is located on the southwest corner of NE Territorial Road and N. Redwood Street. Properties to the south and west are not within the City, but are within the Urban Growth Boundary (UGB). Those properties are designated high density residential should they be annexed into the City at some future time. Property to the north is inside the City and zoned low density residential. Properties to the east are inside the City with portions along Territorial Road designated high density residential and the rest low density residential. This application has previously been approved by the Planning Commission and City Council. The proposal could allow development of the property for high density residential use. Future development requires City review and must comply with land use laws.

### EXPLANATORY STATEMENT

This measure would approve the annexation of 1.44 acres into the city limits of the City of Canby. The property which would be included within the City boundaries is known as Tax Lot 1700 of Tax Map 3-1E-27 CB and is located on the southwest corner of NE Territorial Road and N. Redwood Street. Tax lot 1700 is currently zoned RRRF5 (Rural Residential Farm and Forest - 5 acre Minimum Lot Size). If annexation into the City is approved by the voters, the property would be zoned High Density Residential as required under the City's Comprehensive Land Use Plan (Comp Plan). Currently, the property contains one residence and detached garage. The property owners reside at that location.

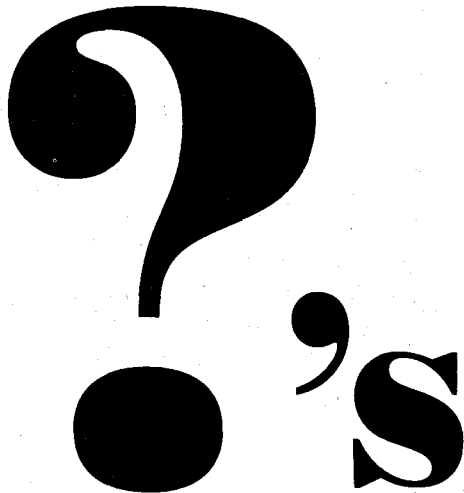
Asset Development Group, as the applicant, and Dick and Joan Hawley as owners, applied to the City of Canby for approval of their annexation request as allowed by Oregon law. The City, following its Charter, has put this matter before the voters for approval.

Under the City of Canby's Comp Plan, the zoning for this property, should it be annexed, is high density residential. The maximum number of multifamily units that could be built on this property is approximately twenty (20). However, annexation alone does not set the future uses to be built on the property. Any development would have to comply with state and local land use laws and would be subject to public review.

The Canby Comp Plan also designates properties for annexation as Priority "A", "B" or "C". Priority "A" properties shall generally be annexed prior to those areas shown as Priority "B" which, in turn, shall generally be annexed prior to those areas shown as Priority "C". The proposed annexation by the Asset Development Group is designated Priority "A" property. The Canby Planning Commission approved this annexation application by a 7-0 vote and the City Council approved the application by a 6-0 vote.

(This information submitted by Chaunee Seifried,  
Canby City Recorder-Pro tem.)

**NO ARGUMENTS IN FAVOR OF OR IN  
OPPOSITION TO THIS MEASURE WERE FILED.**



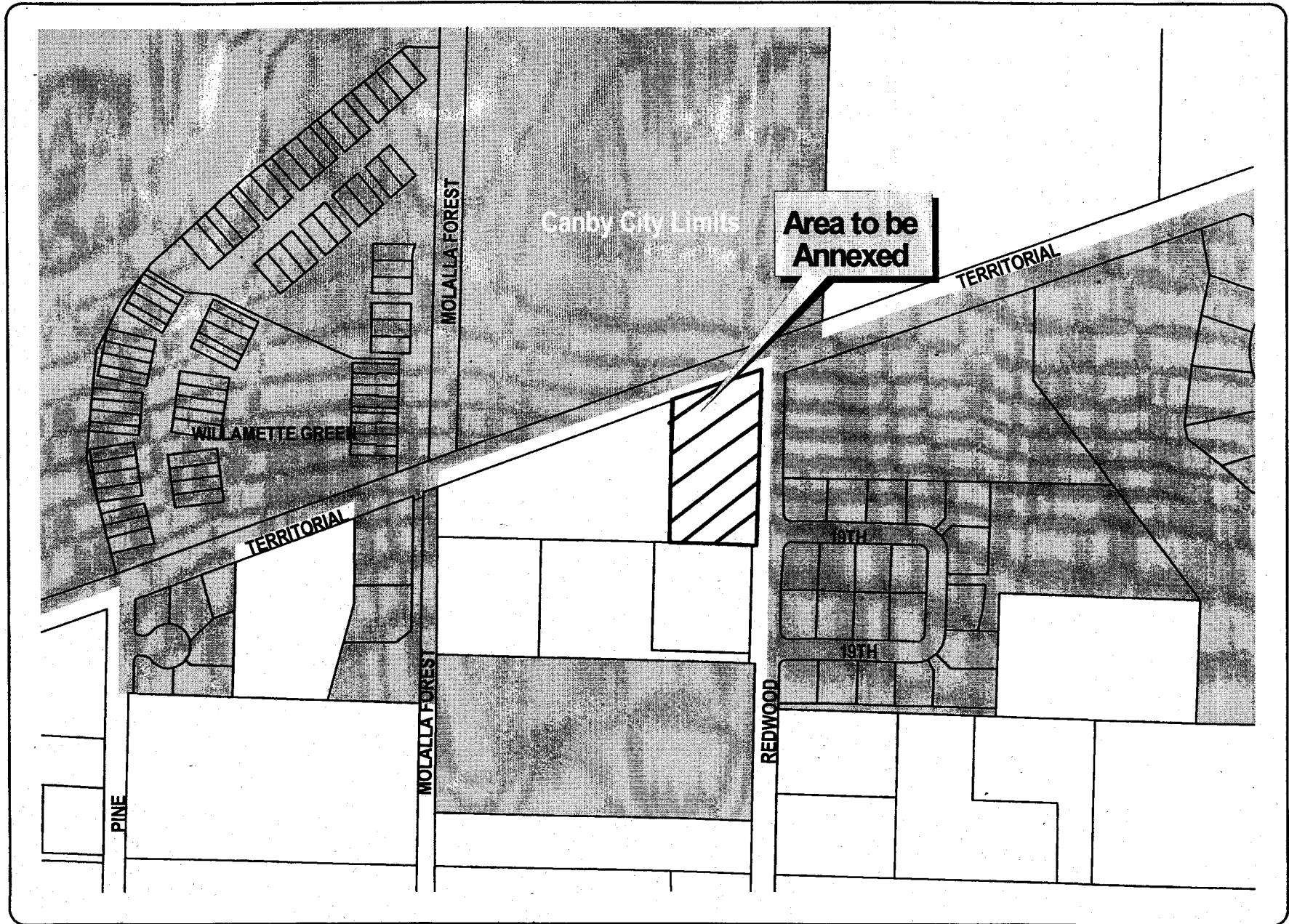
**Call Clackamas  
County Elections  
(503) 655-8510**

**Hearing impaired TDD/TTY  
(503) 655-1685**



# City of Canby Measure 3-66

6



# CITY OF WEST LINN

## Measure No. 3-64

### BALLOT TITLE

#### GENERAL OBLIGATION LIBRARY BOND AUTHORIZATION

**QUESTION:** Shall the City be authorized to contract a general obligation bonded indebtedness in an amount not to exceed \$3,900,000? If the bonds are approved, they will be payable from taxes on property or property ownership that are not subject to the limits of Section 11 and 11b of Article XI of the Oregon Constitution.

**SUMMARY:** This measure may be passed only at an election with at least a 50 percent voter turnout. This measure authorizes the City to issue general obligation bonds of not to exceed \$3,900,000, to expand, remodel, improve and furnish the City library and to pay all costs incidental thereto. Bonds would mature over a period of 25 years.

### EXPLANATORY STATEMENT

Approval of this measure by the voters would allow the City of West Linn to issue up to \$3.9 million in general obligation bonds to expand, remodel, improve and furnish the City library.

The estimated tax rate would be 14 cents for each \$1,000 of assessed property value. The bond would be paid off within a time period not to exceed 25 years from taxes on property within the City of West Linn.

The City Council referred this measure to the voters based upon the work of citizens' committees and reports that have outlined West Linn's need for a bigger library. A space needs assessment was completed in 1996. It confirmed that the library's space needs justify pursuing an expansion. The Library Board, the West Linn Library Future's Committee and the Library Building Task Force concluded after two additional years of study that the expansion is needed.

The expansion plan calls for the building's public area to be more than twice the size of the present 12,000-square-foot facility. A two-story structure would be added to the back of the library. The children's area and audio-visual space would triple. More space would be added to accommodate computers and new technology. Additional conference and study areas would be available. The open book stack areas would be increased by approximately 2,700 square feet. Exterior patios would be added. Each service area of the library would be increased to allow continuation of the services the library has offered in the past and allow for future additions.

Construction is anticipated to begin in August 2000 with voter approval of this bond measure.

(This information submitted by Scott Burgess, City of West Linn.)

### ARGUMENT IN FAVOR

In order to continue the high level of library service we now enjoy in West Linn, our library **MUST** be expanded. This can be accomplished at an estimated tax rate of 14 cents for each \$1,000 of assessed property value.

Since the library's opening in 1989:

- The book collection has tripled in size.
- Circulation of library materials has increased over 300%.
- The number of library card holders has grown from 4,000 to 20,000.
- There are now over 300 special programs for adults and children each year (including school visitations).

The library building has become so crowded that:

- For every book that is added, one must be removed from the shelves.
- Space now used for special programs will soon be needed to house library materials.
- The staff has outgrown its original work area.

In addition, the introduction of computers and other types of new technology has placed new demands on space, equipment, and staff.

For the people of West Linn, our library has become a community treasure and we want it to stay that way. We need your "YES" vote to assure that our library can successfully meet the future needs of our community.

**A MINIMUM OF 50% OF THE REGISTERED VOTERS OF WEST LINN MUST RETURN THEIR BALLOTS IN ORDER FOR THE VOTE ON THIS BOND MEASURE TO BE VALID. A BALLOT NOT RETURNED BECOMES A "NO" VOTE.**

#### VOTE "YES" FOR THE WEST LINN LIBRARY

This information submitted by **Friends of the West Linn Library:**

Lynn Allmeyer	Raymond W. Howard
Helene Felder Callagan	Alan G. Lewis
Michael W. Callagan	Elsie M. Lewis
Susan E. Carley	Chris McKay
James Claxton	Jacque McKay
Veronika G. Claxton	Maurine B. Otos
Gregory S. DiLoreto	William C. Otos
Barbara E. Eastman	Alexander Rattray
Edward R. Eastman	Ann Dixon Rattray
Kathryne Elliot	Helen Marie Sprague
John A. Elliot	William B. Sprague Jr.
Susan H. Elliott	John H. Steele
William D. Elliott	Mary Jo Steele
Duane H. Funk	Phyllis J. Swank
Jeanne A. Glaspey	Janet Taylor
David E. Gaines	
Virginia L. Gaines	
Jenny Hamamura	
Loretta K. Howard	

The printing of this argument does not constitute an endorsement by Clackamas County, nor does the county warrant the accuracy or truth of any statement made in the argument.

## CITY OF WEST LINN

# Measure No. 3-64

### ARGUMENT IN FAVOR

The beautiful West Linn Library is bursting at the seams. Since its construction in 1989 the library has increased its book collection three times over. (Remember the empty shelves when we first moved in? They aren't empty any more!)

Currently for a new book to be placed on the shelf; one must be retired to the basement to make room.

In ten years the technology revolution has blossomed and our library needs to house computers, software, manuals and workstations.

Twenty three staff people work in space designed for five.

That the West Linn Library serves a growing and knowledge thirsty community is made evident with the fact that in 1989 we checked out 100,000 items; ten years later, this year, we will check out 350,000. West Linn itself has almost doubled in population.

It's like our kids growing out of perfectly serviceable clothes - we just need more space to accommodate a "growing body" of patrons and materials!

Two volunteer citizen's committees looked at the situation long and hard. They recommend that the library be remodeled and expanded.

This ballot measure provides the funding for that expansion. For approximately the cost of one book a year, we can take care of the library that is a lively and vital focal point of our town.

This is a bricks and mortar measure; no operating costs are involved.

We are a committee of West Linn residents and library users gathered together to work for passage of this ballot measure.

Because of the voting law changes, your vote is critical. For the election to be valid, fifty percent of the registered voters must return ballots.

We will vote YES for the West Linn Library on the mail in ballot. We strongly urge you to do so too.

Lynn Allmeyer	Jenny Hamamura
Elsie Lewis	Alan Lewis
Alex Rattray	Jill Sherman
Janet Taylor	

(This information submitted by Janet Taylor,  
Vote Library Committee.)

**NO ARGUMENTS IN OPPOSITION  
TO THIS MEASURE WERE FILED.**

The printing of this argument does not constitute an endorsement by Clackamas County, nor does the county warrant the accuracy or truth of any statement made in the argument.

### ELECTION RESULTS ON THE INTERNET November 2, 1999

<http://www.co.clackamas.or.us/elections>

When you connect to the above web site, you will be at the Clackamas County Clerk's Elections home page. You will be presented with several choices, including Election Results, which will allow you to navigate to current results for the November 2, 1999 election. These results will be updated as we continue to process ballots during the evening.

While you are on the Election Results page, you may also review results from past elections.

Back on the Elections home page, you have the opportunity to connect to other Oregon counties which also post election results. Also available are connections to other election related sites, including the Secretary of State.

You may also send an email message directly to the Clackamas County Clerk. Please feel free to comment on the web site or ask any election related question.

## BALLOT DROP SITE LOCATIONS

Ballots for the November 2, 1999 special election may be deposited at any of the following locations **beginning Friday, October 15 through Tuesday, November 2**. Current hours (as of publication) are listed below. Phone numbers are provided in case you wish to confirm the hours.

### Canby Public Library

Phone: 266-3394

M-Th 12:00 pm - 8:00 pm  
F, Sat 10:00 am - 5:00 pm  
Sun 1:00 pm - 5:00 pm

### Molalla Public Library

Phone: 829-2593

M-Th 10:00 am - 8:00 pm  
Fri 10:00 am - 6:00 pm  
Sat 10:00 am - 5:00 pm  
Sun 2:00 pm - 6:00 pm

### Clackamas Corner (County)

Phone: 652-2640

Mon CLOSED  
T-Th 10:00 am - 9:00 pm  
F, Sat 10:00 am - 5:00 pm  
Sun 12:00 pm - 5:00 pm

### Oak Lodge Library (County)

Phone: 655-8543

Mon CLOSED  
T-Th 10:00 am - 9:00 pm  
F, Sat 10:00 am - 5:00 pm  
Sun 12:00 pm - 5:00 pm

### Estacada Public Library

Phone: 630-8273

M-Th 10:00 am - 8:00 pm  
Fri 10:00 am - 6:00 pm  
Sat 10:00 am - 5:00 pm  
Sun 1:00 pm - 5:00 pm

### Oregon City Library

Phone: 657-8269

M-Th 11:00 am - 8:00 pm  
F, Sat 11:00 am - 6:00 pm  
Sun 1:00 pm - 6:00 pm

### Gladstone Public Library

Phone: 656-2411

M-Th 11:00 am - 9:00 pm  
F, Sat 11:00 am - 5:30 pm  
Sun CLOSED

### Sandy Public Library

Phone: 668-5537

M-W 10:00 am - 8:00 pm  
Th, F 10:00 am - 6:00 pm  
Sat 10:00 am - 5:00 pm  
Sun 1:00 pm - 5:00 pm

### Lake Oswego Public Library

Phone: 636-7628

M-Th 10:30 am - 9:00 pm  
F, Sat 10:30 am - 5:30 pm  
Sun 12:30 pm - 5:30 pm

### West Linn Public Library

Phone: 656-7853

M-Th 10:00 am - 8:00 pm  
F, Sat 10:00 am - 5:00 pm  
Sun 1:00 pm - 5:00 pm

### Ledding Library of Milwaukie

Phone: 786-7580

M-Th 12:00 pm - 9:00 pm  
F, Sat 12:00 pm - 5:30 pm  
Sun 1:00 pm - 5:00 pm

### Wilsonville Public Library

Phone: 682-2744

M-Th 10:00 am - 9:00 pm  
F, Sat 10:00 am - 5:30 pm  
Sun 1:30 pm - 5:00 pm

In addition, the Clackamas County Elections Division, 825 Portland Avenue, Gladstone is available for ballot deposit. Daily office hours are 8:30 a.m. to 5:00 p.m. Monday through Friday; or you may utilize the front door drop slot during hours closed. Election day office hours are 7:00 a.m. to 8:00 p.m.



**ELECTIONS DIVISION**  
825 PORTLAND AVENUE  
GLADSTONE, OR 97027

**JOHN KAUFFMAN**  
COUNTY CLERK

# CLACKAMAS COUNTY VOTERS' PAMPHLET

3

## SPECIAL ELECTION

November 2, 1999



---

**VOTED BALLOTS MUST BE  
RECEIVED IN THE ELECTIONS  
OFFICE OR AT ANY  
DROP SITE LOCATION  
(LISTED ON PAGE 12)  
BY 8:00 P.M. ON TUESDAY,  
NOVEMBER 2, 1999  
TO BE COUNTED.**

---



Please **RECYCLE** this pamphlet with your newspapers!



# CLACKAMAS COUNTY

Office of the County Clerk

JOHN KAUFFMAN  
CLERK

719 MAIN STREET  
OREGON CITY, OR 97045  
(503) 722-2745  
FAX (503) 650-3563

October, 1999

Dear Clackamas County Voter:

This Voters' Pamphlet contains information designed to assist you in voting. It contains explanatory statements and arguments regarding the Clackamas County Law Enforcement Local Option Tax Measure as well as three annexation measures presented by the city of Oregon City.

Your voted ballot must be received in the Elections Office, 825 Portland Avenue, Gladstone, OR, by 8:00 PM on election night to be counted. Postmark does not count. If you prefer, instead of mailing your ballot, you may take it to the Elections Office or to one of the Drop Site Locations listed on page 12 of this pamphlet. Drop boxes will be available at these locations from October 15 through 8 PM on Tuesday, November 2.

If a ballot was delivered to your residence for someone who should no longer be receiving ballots at your address, please write "RETURN" on the envelope and place it back in your mail box. If a ballot was sent to someone who is deceased, please write "DECEASED" on the envelope and place it back in your mailbox.

Information about voter registration is on page 7 of this pamphlet.

The address for Internet access for election results is on page 9.

If you have any questions about this election, or the elections process, please call the Elections Office at (503) 655-8510.

Sincerely,

John Kauffman  
Clackamas County Clerk

BOARD OF PROPERTY TAX APPEALS  
719 MAIN STREET  
OREGON CITY, OR 97045  
(503) 655-8662  
FAX (503) 650-3563

ELECTIONS DIVISION  
825 PORTLAND AVENUE  
GLADSTONE, OR 97027  
(503) 655-8510  
FAX (503) 655-8461

PRINTING DIVISION  
2100 KAEN ROAD  
OREGON CITY, OR 97045  
(503) 655-8337  
FAX (503) 557-5883

RECORDING DIVISION  
807 MAIN STREET - ROOM 104  
OREGON CITY, OR 97045  
(503) 655-8551  
FAX (503) 650-3035

RECORDS MANAGEMENT DIVISION  
999 LIBRARY COURT  
OREGON CITY, OR 97045  
(503) 655-8323  
FAX (503) 655-8195



## CLACKAMAS COUNTY

**Measure No. 3-67****BALLOT TITLE****FOUR YEAR LAW ENFORCEMENT LOCAL OPTION TAX**

**QUESTION:** Shall Clackamas County levy \$.41 per \$1000 assessed value, beginning 2000-2001, for capital projects and operations for law enforcement services?

This rate would be imposed for four years. This measure may cause property taxes to increase more than three percent.

**SUMMARY:** This measure may be passed only at an election with at least a 50 percent voter turnout.

If this measure is approved it would provide an estimated \$35,501,148 over a four year period for law enforcement. The money would go to the Sheriff's office, District Attorney's office, Community Corrections and Juvenile Department. Planned expenditures include additional staff and programs for each of those offices. The primary uses of this levy are to improve the county-wide corrections capacities and programs for adult and juvenile offenders. The Juvenile Department will be able to specifically address the 11% of juvenile offenders responsible for 75% of juvenile crime. The jail capacity will be expanded to accommodate the growth of the County and eliminate the need for early release of people charged with serious crimes. The District Attorney and Community Corrections Department will initiate or expand programs to serve victims of crime and develop community based corrections programs. By law, money raised by this levy can only be used for law enforcement purposes.

It is estimated the proposed rate will raise \$8,115,260 in 2000-2001, \$8,602,176 in 2001-2002, \$9,118,306 in 2002-2003, and \$9,665,405 in 2003-2004.

**EXPLANATORY STATEMENT**

Passage of this measure would allow Clackamas County to levy taxes outside the current tax base for four fiscal years, 2000-01, 2001-02, 2002-03, and 2003-04. The local option tax would be limited to those four years, and any additional local option tax would be subject to approval by the voters. By law the money raised by this measure could only be used for law enforcement purposes as stated in the ballot title.

The Sheriff's Office, the District Attorney's Office, the Juvenile Department, and Community Corrections are funded by a permanent tax rate. Previously these agencies were funded by way of a renewable three-year serial levy.

This measure will supplement declining funding for the Sheriff's Office, District Attorney, Juvenile Department, and Community Corrections. Supplemental funding is needed in order to maintain current levels of services, and meet anticipated future impacts on law enforcement delivery among the Sheriff's Office, District Attorney, Juvenile Department, and Community Corrections.

The money raised by this measure will be used to handle current and anticipated increases in jail population, and increased demand for investigative services within the Sheriff's Office. Remaining money raised by this measure will be used to fund increased demands for prosecution of criminals through the District Attorney's Office, and funding of Juvenile Court and prevention and abuse programs aimed at preventing crime. The rate for the local option tax would be 41 cents per \$1000 assessed value. The rate would be the same over the four years. The local option is expected to raise \$8,115,260 in 2000-2001, \$8,602,176 in 2001-2002, \$9,118,306 in 2002-2003, and \$9,665,405 in 2003-2004.

If this measure is not approved, there would be reductions in personnel and services provided by the Sheriff's Office and related criminal justice programs. Passage of this measure would allow criminal justice programs to keep pace with increasing service demands.

(This information submitted by the  
Board of County Commissioners of Clackamas County.)



# CLACKAMAS COUNTY

## Measure No. 3-67

### ARGUMENT IN FAVOR

In the past 5 years, Clackamas County prosecutors, police, corrections officers and courts have coordinated efforts in ways that make sense and produce results. The levy will continue this progress.

In January 2000, Clackamas County will begin treating drug users through a treatment-required Drug Court. Funding court-monitored drug treatment will reduce property crime by eradicating a major reason for theft. Levy funds will support a facility for treatment of child abuse and neglect victims and property crime prosecutions will continue at the current zero-tolerance level.

Urbanization and city crime has not destroyed county livability because county law enforcement is technically up-to-date and capable of protecting people and property. We cannot afford to let down our guard as growth pushes Clackamas County's limits. 1998 saw the county death rate due to drunk driving plummet as the rates in other counties soared. Juvenile crime is being counteracted as never before. Crime victims receive round-the-clock services and higher financial compensation for their losses. Law enforcement agencies have consolidated efforts to avoid duplication and there is less passing the buck from agency to agency than has been the case historically. Cost effective ideas have been implemented and are working.

Passage of the levy will not mean pay raises for police, prosecutors or jailers. The levy's purpose is to maintain the balanced law enforcement system we have and allow the system to provide incarceration, drug and alcohol treatment, and child abuse intervention services for those who need and deserve them. As one who is responsible for maintaining a credible law enforcement system, I am asking for your support to maintain Clackamas County's livability as a safe place to live, work and recreate - a place where all provable crimes are prosecuted and innocent people are protected.

(This information submitted by  
Terry Gustafson, Clackamas County District Attorney.)

The printing of this argument does not constitute an endorsement by Clackamas County, nor does the county warrant the accuracy or truth of any statement made in the argument.

### ARGUMENT IN FAVOR

The Sheriff's Office, District Attorney, Juvenile Department, and portions of Community Corrections are funded by permanent tax rates. However, growth in Clackamas County has created a greater need for services, and this need has surpassed the dollars available to fund essential criminal justice services.

On November 2, 1999, you the voter will have an opportunity to provide for the continuation of professional law enforcement services in Clackamas County.

A vote for the Four Year Law Enforcement Local Option Tax will provide additional jail capacity and eliminate the need for early release of persons charged serious crimes. The Juvenile Department will be able to specifically address the 11% of juvenile offenders responsible for 75% of juvenile crime. The District Attorney and Community Corrections Department will initiate or expand programs to service victims of crime and develop community based corrections programs.

Passage of the measure will ensure citizens, who live, work and recreate in Clackamas County will continue to receive professional law enforcement services.

This year the Sheriff's Office will book approximately 16,000 persons into the Jail. As the County continues to grow this number will rise. A vote for this measure will allow for jail expansion into facilities currently occupied by the Department of Corrections, but will soon be turned over to the County. Staying ahead of the need for jail space will help keep serious offenders locked up, and out of our communities.

Over the years you have made a sound investment in the Sheriff's Office and the County's criminal justice system. Please help in protecting your investment by voting **YES** on the Four Year Law Enforcement Local Option Tax.

(This information submitted by Larry A. Wright,  
Citizen's for Effective Law Enforcement.)

The printing of this argument does not constitute an endorsement by Clackamas County, nor does the county warrant the accuracy or truth of any statement made in the argument.

## CLACKAMAS COUNTY

## CITY OF OREGON CITY

**Measure No. 3-67****Measure No. 3-61****ARGUMENT IN FAVOR**

As your Sheriff, there have been a couple of very important priorities for my office. These priorities are shared with the District Attorney, Juvenile Department and Community Corrections Department.

One of those priorities has been to create a cost-effective and coordinated system of law enforcement and public safety for Clackamas County.

The other has been to develop that system so that it is ready to meet the increasing demands that the growth of the region have created. Our belief is that preparation for new demands is far more effective and much less costly than having to react to problems after they become ingrained in our communities.

It is evident to me that the people of Clackamas County share these priorities. You have had the opportunity to help guide the direction and development of this system through input to our offices and by voicing your support at the ballot box. Citizens of this County have approved dedicated law enforcement funding measures for many years. The results of that support are evident in the level of public safety and neighborhood quality of life we continue to enjoy.

I am asking Clackamas County voters to support our continued efforts. On your November, 1999 ballot is measure 3-67, a four-year dedicated law enforcement local option tax measure. If approved, this measure will allow us to operate 160 additional Jail beds that the County is acquiring from the State at no cost to local taxpayers. It will expand programs to address major crime, property crimes and drugs. It will allow the intense supervision of those 11% of juvenile offenders who commit 75% of juvenile crime. It will increase the supervision and treatment of adults on parole or probation. And, it will improve services to victims of crime.

These steps are necessary to maintain our priorities I have described. Please continue your support for a safe community with a "yes" vote for measure 3-67. Thank You.

(This information submitted by Ris Bradshaw, Sheriff.)

**NO ARGUMENTS IN OPPOSITION TO THIS MEASURE WERE FILED.**

The printing of this argument does not constitute an endorsement by Clackamas County, nor does the county warrant the accuracy or truth of any statement made in the argument.

**BALLOT TITLE****EXPANDS CITY BOUNDARIES TO INCLUDE ADDITIONAL LAND**

**QUESTION:** Shall the City's boundaries be expanded to include additional land on the south side of the city?

**SUMMARY:** This measure would expand the City's boundaries by approximately 7.19 acres by including within the City the following property:

Tax lots 2400, 2500 and 2600, Map 3-2E-7B, on the south side of the City, on the north edge of Pease Road, northeast of McCord Road, containing approximately 7.19 acres.

This property is proposed for annexation to obtain City services to facilitate possible future development, although no specific development is currently proposed for the property. The property meets all state and City requirements for annexation into the City and services can be adequately provided to the property. The property is currently zoned FU-10 (future urbanizable with a 10-acre minimum lot size) and is located within the City's urban growth boundary.

**EXPLANATORY STATEMENT**

This measure would approve the annexation of 7.19 acres into the city limits of the City of Oregon City. The property which would be included within the City boundaries is known as Tax Lots 2400, 2500 and 2600 of Tax Map 3-2E-7B and is located on the south side of the City, on the north edge of Pease Road, northeast of McCord Road. The property contains three single family residences and an estimated population of six. Currently, the property is zoned FU-10 (future urbanizable with a 10 acre minimum lot size).

Dwaine and Linda Lausche (Tax Lot 2500), Leslie and Linda Streight (Tax Lot 2400), and Patrick and Lauri Ryan (Tax Lot 2600), as owners and applicants, applied to the City of Oregon City for approval of this annexation request as allowed by Oregon law. The City, following its Charter, has put this matter before the voters for approval.

The property owners/applicants have no specific development plans. However, any development would have to comply with state and local land use laws and would be subject to public review. Oregon City has three zones that may be applied to the County's Low Density Residential plan designation: R-10, R-8 and R-6. These zones require a minimum lot size of 10,000, 8,000 and 6,000 square feet and a minimum density of 4.4, 5.5 and 7.3 units per acre respectively.

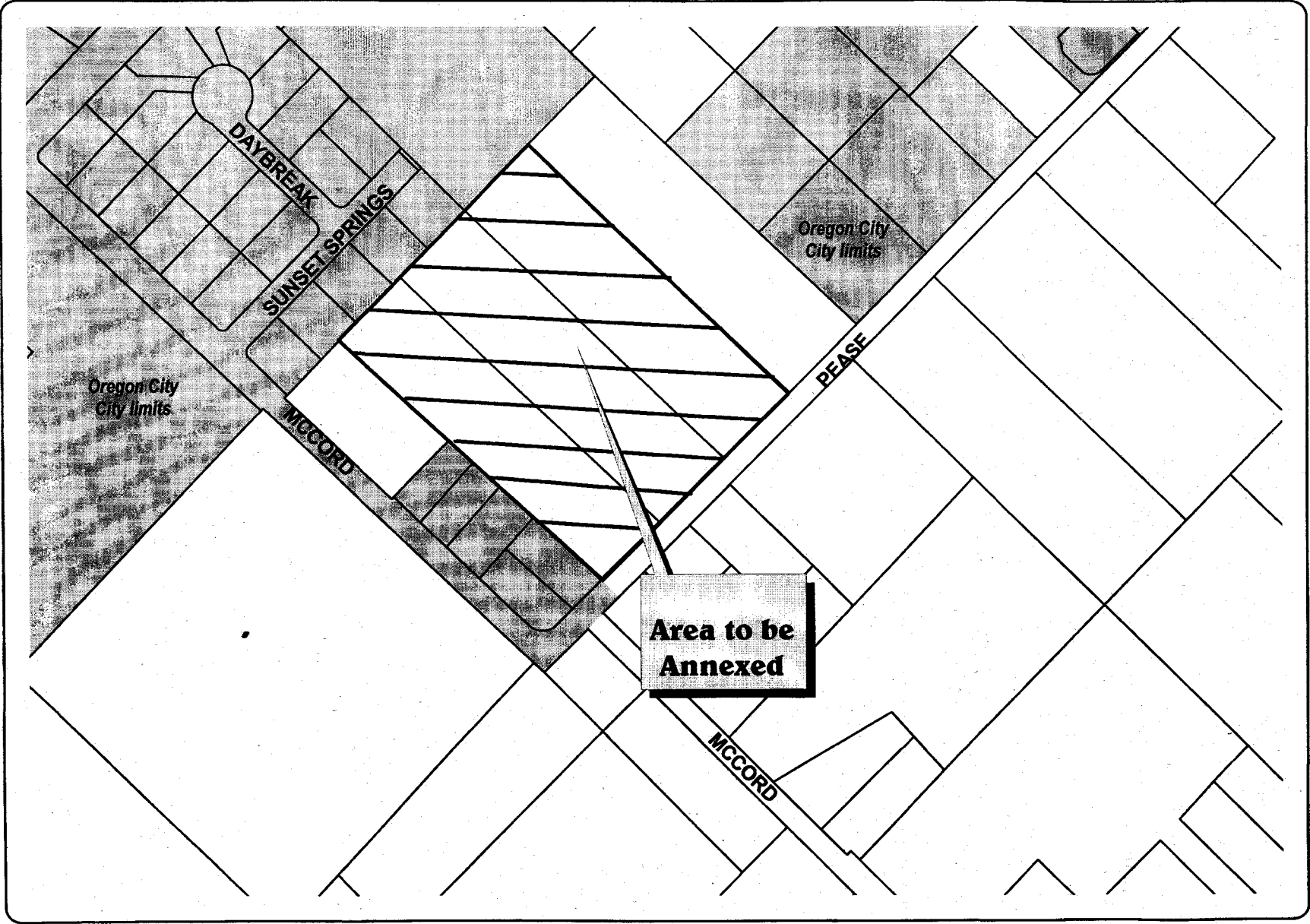
The City provides sanitary sewer collector service with a 10-inch line in Pease Road immediately adjacent to the properties. The City has a 12-inch water line in Pease Road one tax lot to the north of the properties. Regarding storm sewer facilities, the City is scheduled to begin a Central Point Basin Study in the near future to determine a course of action. As properties develop, this plan will be implemented. Typically, larger scale residential subdivisions require the installation of on-site storm detention facilities in addition to a piped overflow to a City system. The tract of land lies within the territory of Clackamas County Rural Fire Protection District No. 1 and the Clackamas County Service District for Enhanced Law Enforcement. Upon annexation, City fire, police, planning, building inspection and permits will be available to the territory.

The Oregon City Commission conducted a public hearing and approved this application by a 5-0 vote and set the date of election for November 2, 1999.

(This information submitted by Jean K. Elliott, Recorder, City of Oregon City.)

**NO ARGUMENTS IN FAVOR OF OR IN OPPOSITION TO THIS MEASURE WERE FILED.**

# City of Oregon City Measure 3-61



# City of Canby Measure 3-65



CONTINUED ↓

CITY OF CANBY

# Measure No. 3-66

## BALLOT TITLE

### MEASURE APPROVING ANNEXATION OF 1.44 ACRES INTO CITY OF CANBY

**QUESTION:** Shall 1.44 acres located on the Southwest Corner of NE Territorial Road and N. Redwood Street be annexed into the Canby City limits?

**SUMMARY:** Annexation is the legal process to bring property inside the City limits. Asset Development Group, as the applicant, and Dick and Joan Hawley as owners, have asked the City to bring 1.44 acres of land into the City limits. The legal description of the property is Tax Lot 1700 of Tax Map 3-1E-27CB. It is located on the southwest corner of NE Territorial Road and N. Redwood Street. Properties to the south and west are not within the City, but are within the Urban Growth Boundary (UGB). Those properties are designated high density residential should they be annexed into the City at some future time. Property to the north is inside the City and zoned low density residential. Properties to the east are inside the City with portions along Territorial Road designated high density residential and the rest low density residential. This application has previously been approved by the Planning Commission and City Council. The proposal could allow development of the property for high density residential use. Future development requires City review and must comply with land use laws.

## EXPLANATORY STATEMENT

This measure would approve the annexation of 1.44 acres into the city limits of the City of Canby. The property which would be included within the City boundaries is known as Tax Lot 1700 of Tax Map 3-1E-27 CB and is located on the southwest corner of NE Territorial Road and N. Redwood Street. Tax lot 1700 is currently zoned RRF5 (Rural Residential Farm and Forest - 5 acre Minimum Lot Size). If annexation into the City is approved by the voters, the property would be zoned High Density Residential as required under the City's Comprehensive Land Use Plan (Comp Plan). Currently, the property contains one residence and detached garage. The property owners reside at that location.

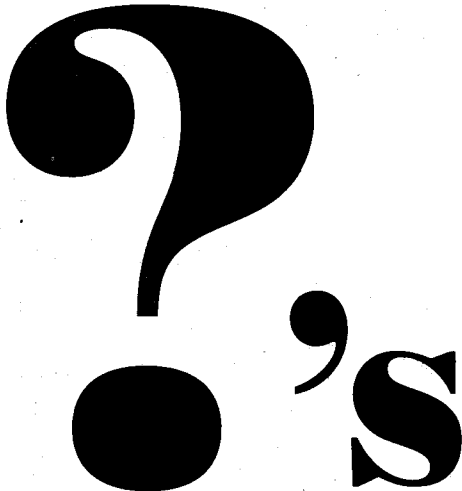
Asset Development Group, as the applicant, and Dick and Joan Hawley as owners, applied to the City of Canby for approval of their annexation request as allowed by Oregon law. The City, following its Charter, has put this matter before the voters for approval.

Under the City of Canby's Comp Plan, the zoning for this property, should it be annexed, is high density residential. The maximum number of multifamily units that could be built on this property is approximately twenty (20). However, annexation alone does not set the future uses to be built on the property. Any development would have to comply with state and local land use laws and would be subject to public review.

The Canby Comp Plan also designates properties for annexation as Priority "A", "B" or "C". Priority "A" properties shall generally be annexed prior to those areas shown as Priority "B" which, in turn, shall generally be annexed prior to those areas shown as Priority "C". The proposed annexation by the Asset Development Group is designated Priority "A" property. The Canby Planning Commission approved this annexation application by a 7-0 vote and the City Council approved the application by a 6-0 vote.

(This information submitted by Chaunee Seifried,  
Canby City Recorder-Pro tem.)

**NO ARGUMENTS IN FAVOR OF OR IN  
OPPOSITION TO THIS MEASURE WERE FILED.**

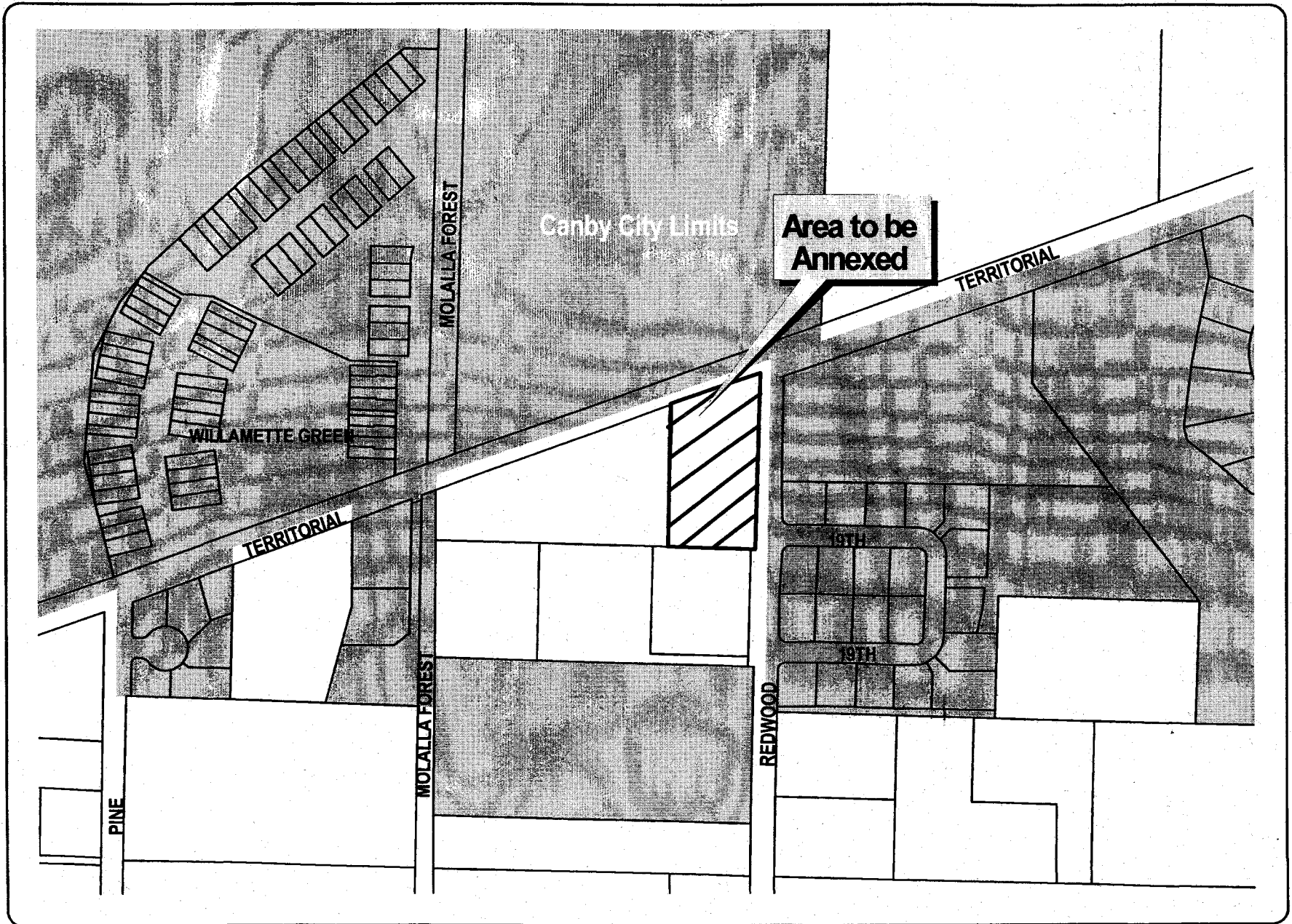


**Call Clackamas  
County Elections  
(503) 655-8510**

**Hearing impaired TDD/TTY  
(503) 655-1685**

# City of Canby Measure 3-66

6





# CITY OF WEST LINN

## Measure No. 3-64

### BALLOT TITLE

#### GENERAL OBLIGATION LIBRARY BOND AUTHORIZATION

**QUESTION:** Shall the City be authorized to contract a general obligation bonded indebtedness in an amount not to exceed \$3,900,000? If the bonds are approved, they will be payable from taxes on property or property ownership that are not subject to the limits of Section 11 and 11b of Article XI of the Oregon Constitution.

**SUMMARY:** This measure may be passed only at an election with at least a 50 percent voter turnout. This measure authorizes the City to issue general obligation bonds of not to exceed \$3,900,000, to expand, remodel, improve and furnish the City library and to pay all costs incidental thereto. Bonds would mature over a period of 25 years.

### EXPLANATORY STATEMENT

Approval of this measure by the voters would allow the City of West Linn to issue up to \$3.9 million in general obligation bonds to expand, remodel, improve and furnish the City library.

The estimated tax rate would be 14 cents for each \$1,000 of assessed property value. The bond would be paid off within a time period not to exceed 25 years from taxes on property within the City of West Linn.

The City Council referred this measure to the voters based upon the work of citizens' committees and reports that have outlined West Linn's need for a bigger library. A space needs assessment was completed in 1996. It confirmed that the library's space needs justify pursuing an expansion. The Library Board, the West Linn Library Future's Committee and the Library Building Task Force concluded after two additional years of study that the expansion is needed.

The expansion plan calls for the building's public area to be more than twice the size of the present 12,000-square-foot facility. A two-story structure would be added to the back of the library. The children's area and audio-visual space would triple. More space would be added to accommodate computers and new technology. Additional conference and study areas would be available. The open book stack areas would be increased by approximately 2,700 square feet. Exterior patios would be added. Each service area of the library would be increased to allow continuation of the services the library has offered in the past and allow for future additions.

Construction is anticipated to begin in August 2000 with voter approval of this bond measure.

(This information submitted by Scott Burgess, City of West Linn.)

### ARGUMENT IN FAVOR

In order to continue the high level of library service we now enjoy in West Linn, our library **MUST** be expanded. This can be accomplished at an estimated tax rate of 14 cents for each \$1,000 of assessed property value.

Since the library's opening in 1989:

- The book collection has tripled in size.
- Circulation of library materials has increased over 300%.
- The number of library card holders has grown from 4,000 to 20,000.
- There are now over 300 special programs for adults and children each year (including school visitations).

The library building has become so crowded that:

- For every book that is added, one must be removed from the shelves.
- Space now used for special programs will soon be needed to house library materials.
- The staff has outgrown its original work area.

In addition, the introduction of computers and other types of new technology has placed new demands on space, equipment, and staff.

For the people of West Linn, our library has become a community treasure and we want it to stay that way. We need your "YES" vote to assure that our library can successfully meet the future needs of our community.

**A MINIMUM OF 50% OF THE REGISTERED VOTERS OF WEST LINN MUST RETURN THEIR BALLOTS IN ORDER FOR THE VOTE ON THIS BOND MEASURE TO BE VALID. A BALLOT NOT RETURNED BECOMES A "NO" VOTE.**

#### VOTE "YES" FOR THE WEST LINN LIBRARY

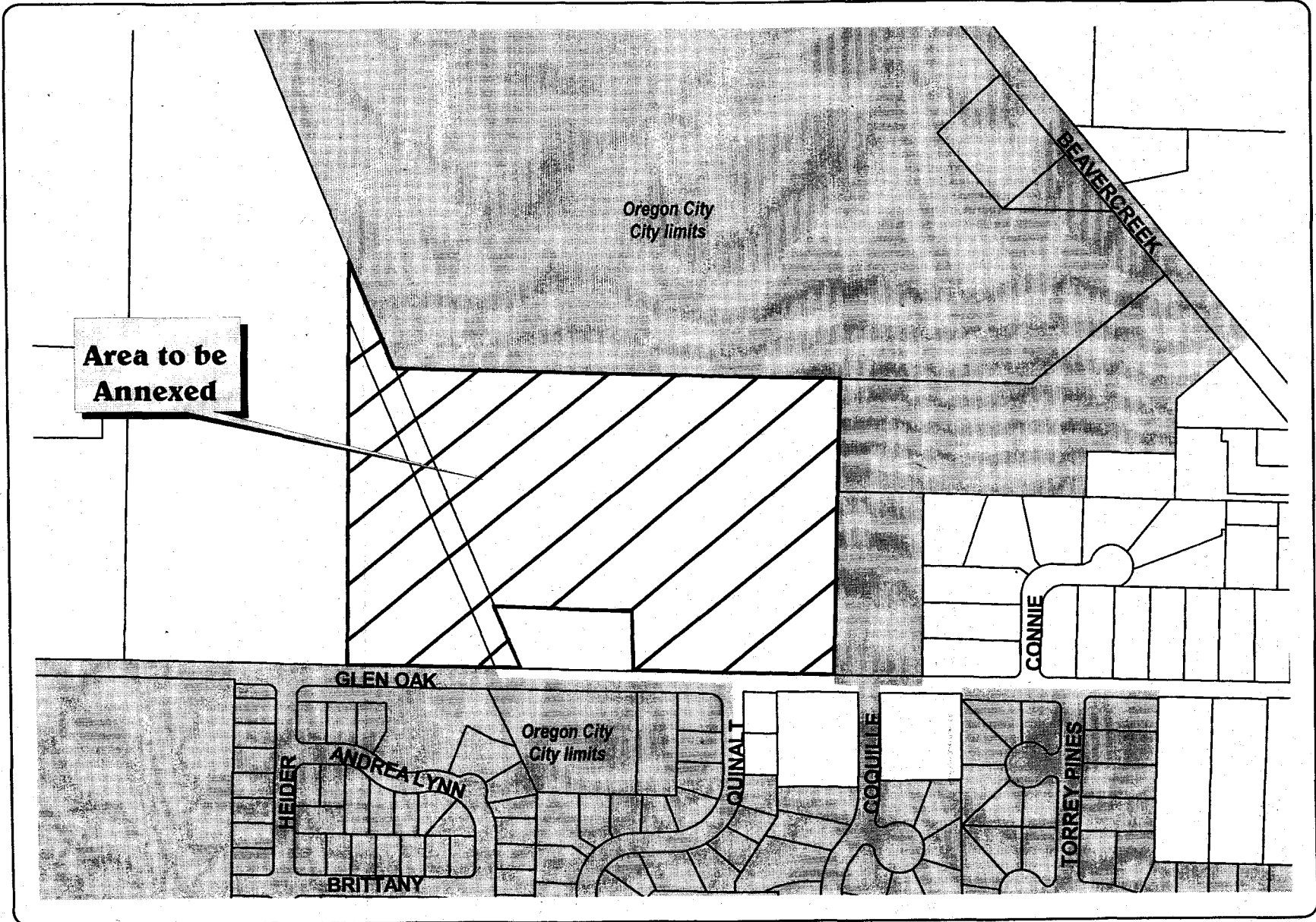
This information submitted by **Friends of the West Linn Library:**

Lynn Allmeyer	Raymond W. Howard
Helene Felder Callagan	Alan G. Lewis
Michael W. Callagan	Elsie M. Lewis
Susan E. Carley	Chris McKay
James Claxton	Jacque McKay
Veronika G. Claxton	Maurine B. Otos
Gregory S. DiLoreto	William C. Otos
Barbara E. Eastman	Alexander Rattray
Edward R. Eastman	Ann Dixon Rattray
Kathryne Elliot	Helen Marie Sprague
John A. Elliot	William B. Sprague Jr.
Susan H. Elliott	John H. Steele
William D. Elliott	Mary Jo Steele
Duane H. Funk	Phyllis J. Swank
Jeanne A. Glaspey	Janet Taylor
David E. Gaines	
Virginia L. Gaines	
Jenny Hamamura	
Loretta K. Howard	

The printing of this argument does not constitute an endorsement by Clackamas County, nor does the county warrant the accuracy or truth of any statement made in the argument.



# City of Oregon City Measure 3-63



## BALLOT DROP SITE LOCATIONS

Ballots for the November 2, 1999 special election may be deposited at any of the following locations **beginning Friday, October 15 through Tuesday, November 2**. Current hours (as of publication) are listed below. Phone numbers are provided in case you wish to confirm the hours.

### Canby Public Library

Phone: 266-3394

M-Th 12:00 pm - 8:00 pm  
 F, Sat 10:00 am - 5:00 pm  
 Sun 1:00 pm - 5:00 pm

### Molalla Public Library

Phone: 829-2593

M-Th 10:00 am - 8:00 pm  
 Fri 10:00 am - 6:00 pm  
 Sat 10:00 am - 5:00 pm  
 Sun 2:00 pm - 6:00 pm

### Clackamas Corner (County)

Phone: ~~652-2640~~ 722-6222

*New #7*  
 Mon CLOSED  
 T-Th 10:00 am - 9:00 pm  
 F, Sat 10:00 am - 5:00 pm  
 Sun 12:00 pm - 5:00 pm

### Oak Lodge Library (County)

Phone: 655-8543

Mon CLOSED  
 T-Th 10:00 am - 9:00 pm  
 F, Sat 10:00 am - 5:00 pm  
 Sun 12:00 pm - 5:00 pm

### Estacada Public Library

Phone: 630-8273

M-Th 10:00 am - 8:00 pm  
 Fri 10:00 am - 6:00 pm  
 Sat 10:00 am - 5:00 pm  
 Sun 1:00 pm - 5:00 pm

### Oregon City Library

Phone: 657-8269

M-Th 11:00 am - 8:00 pm  
 F, Sat 11:00 am - 6:00 pm  
 Sun 1:00 pm - 6:00 pm

### Gladstone Public Library

Phone: 656-2411

M-Th 11:00 am - 9:00 pm  
 F, Sat 11:00 am - 5:30 pm  
 Sun CLOSED

### Sandy Public Library

Phone: 668-5537

M-W 10:00 am - 8:00 pm  
 Th, F 10:00 am - 6:00 pm  
 Sat 10:00 am - 5:00 pm  
 Sun 1:00 pm - 5:00 pm

### Lake Oswego Public Library

Phone: 636-7628

M-Th 10:30 am - 9:00 pm  
 F, Sat 10:30 am - 5:30 pm  
 Sun 12:30 pm - 5:30 pm

### West Linn Public Library

Phone: 656-7853

M-Th 10:00 am - 8:00 pm  
 F, Sat 10:00 am - 5:00 pm  
 Sun 1:00 pm - 5:00 pm

### Ledding Library of Milwaukie

Phone: 786-7580

M-Th 12:00 pm - 9:00 pm  
 F, Sat 12:00 pm - 5:30 pm  
 Sun 1:00 pm - 5:00 pm

### Wilsonville Public Library

Phone: 682-2744

M-Th 10:00 am - 9:00 pm  
 F, Sat 10:00 am - 5:30 pm  
 Sun 1:30 pm - 5:00 pm

In addition, the Clackamas County Elections Division, 825 Portland Avenue, Gladstone is available for ballot deposit. Daily office hours are 8:30 a.m. to 5:00 p.m. Monday through Friday; or you may utilize the front door drop slot during hours closed. Election day office hours are 7:00 a.m. to 8:00 p.m.