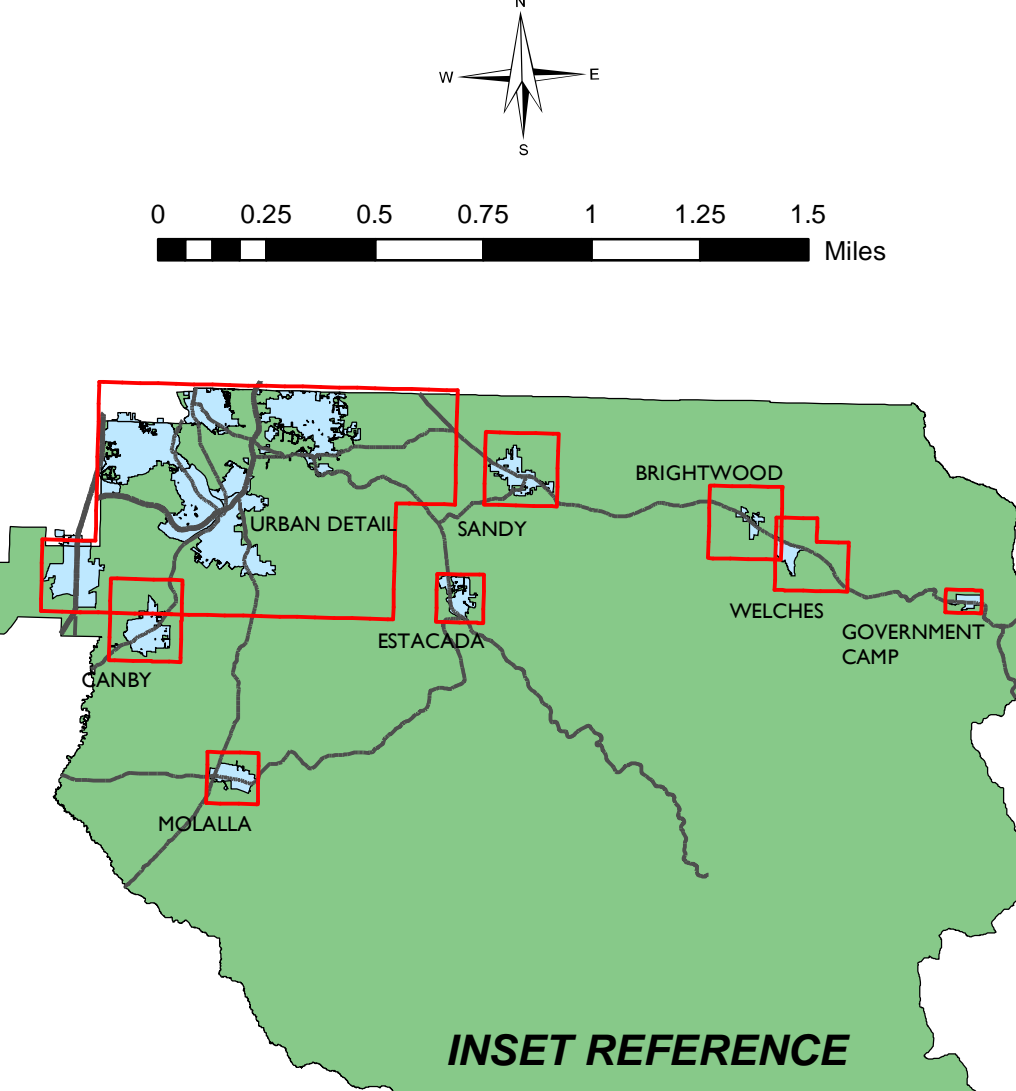


- MAP DESCRIPTION**
- Interstate Highway
 - U.S. Highway
 - State Highway
 - Exits
 - Freeway
 - Expressway/State Highway
 - Major Arterial/State Highway
 - Minor Arterial
 - Collector
 - Connector
 - Local
 - Private Street with Address
 - Private Street without Address
 - Railroad
 - Freeway Ramps
 - County Courthouse
 - City Hall
 - Hospital
 - Fire Stations
 - Police Stations
 - Library
 - Airport
 - Schools
Names Not Show for Elementary
 - Park / Recreation
 - Golf Course
 - Boat Launch
 - Swimming
 - Oregon Trail Interpretive Center
 - Recreation Areas
 - Mt. Hood National Forest



CLACKAMAS COUNTY
 GEOGRAPHIC INFORMATION SYSTEMS
 DEPARTMENT OF INFORMATION SERVICES
 DATA SHOWN CURRENT AS OF NOVEMBER 2021

