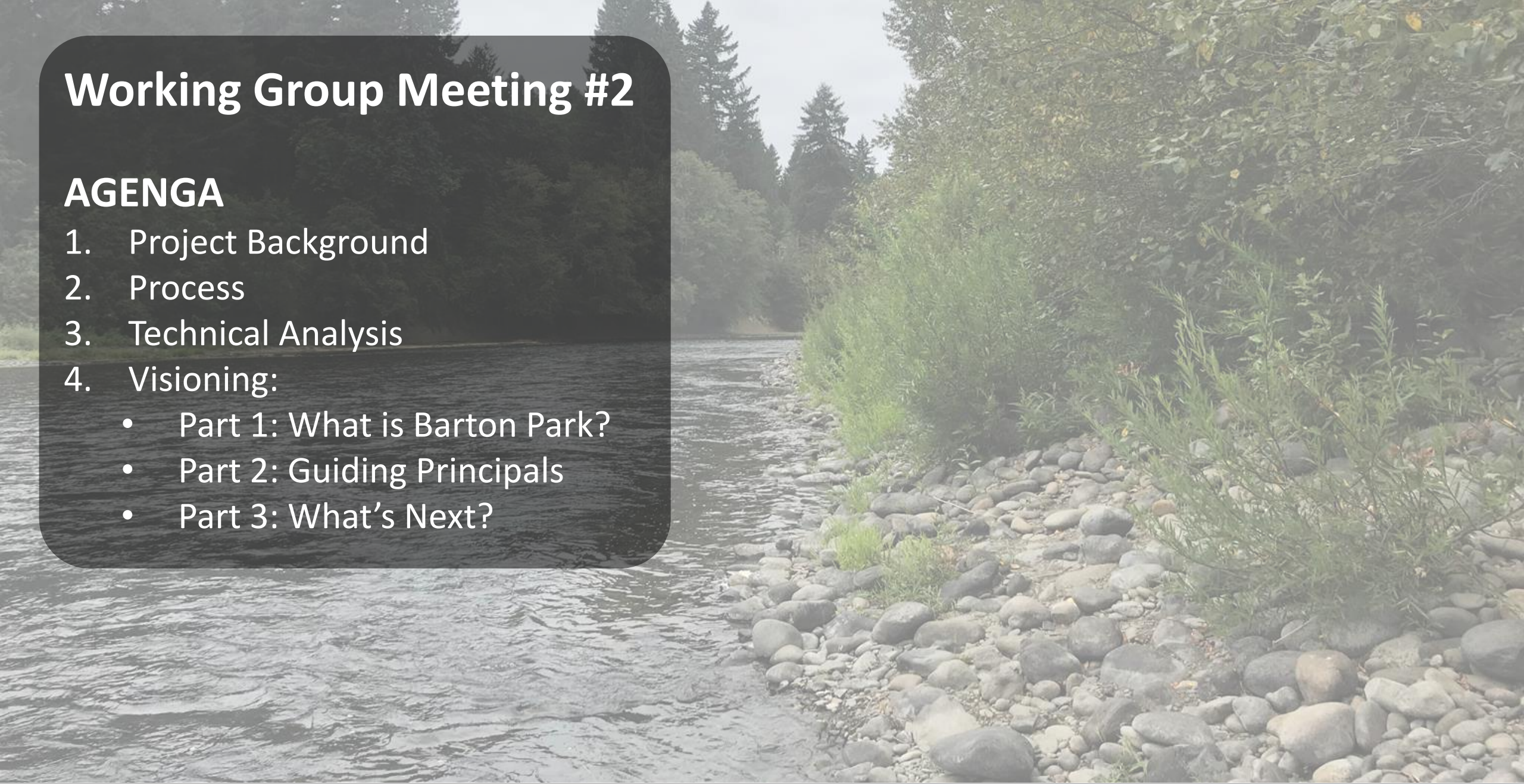
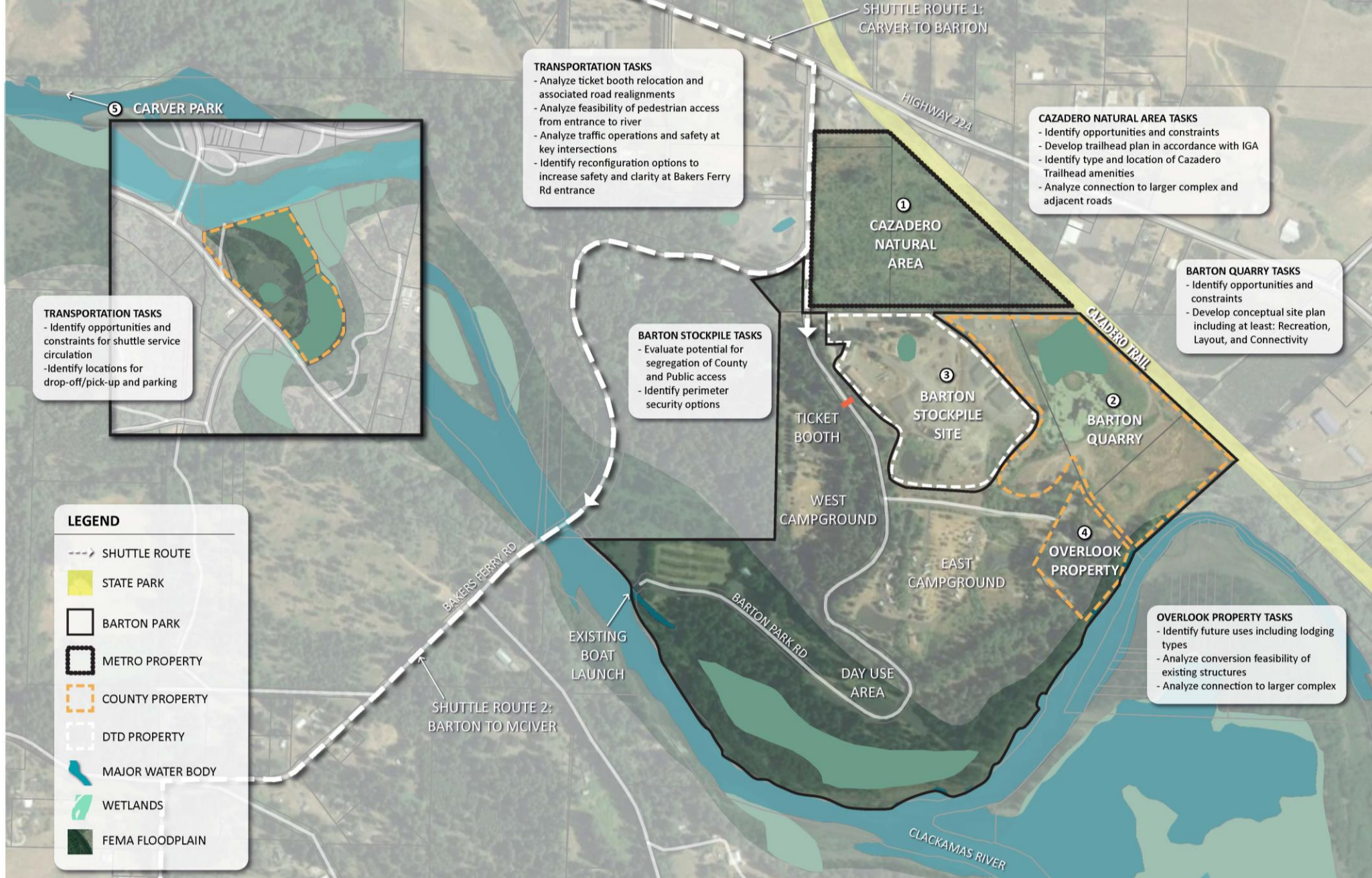


Working Group Meeting #2

AGENDA

1. Project Background
2. Process
3. Technical Analysis
4. Visioning:
 - Part 1: What is Barton Park?
 - Part 2: Guiding Principals
 - Part 3: What's Next?





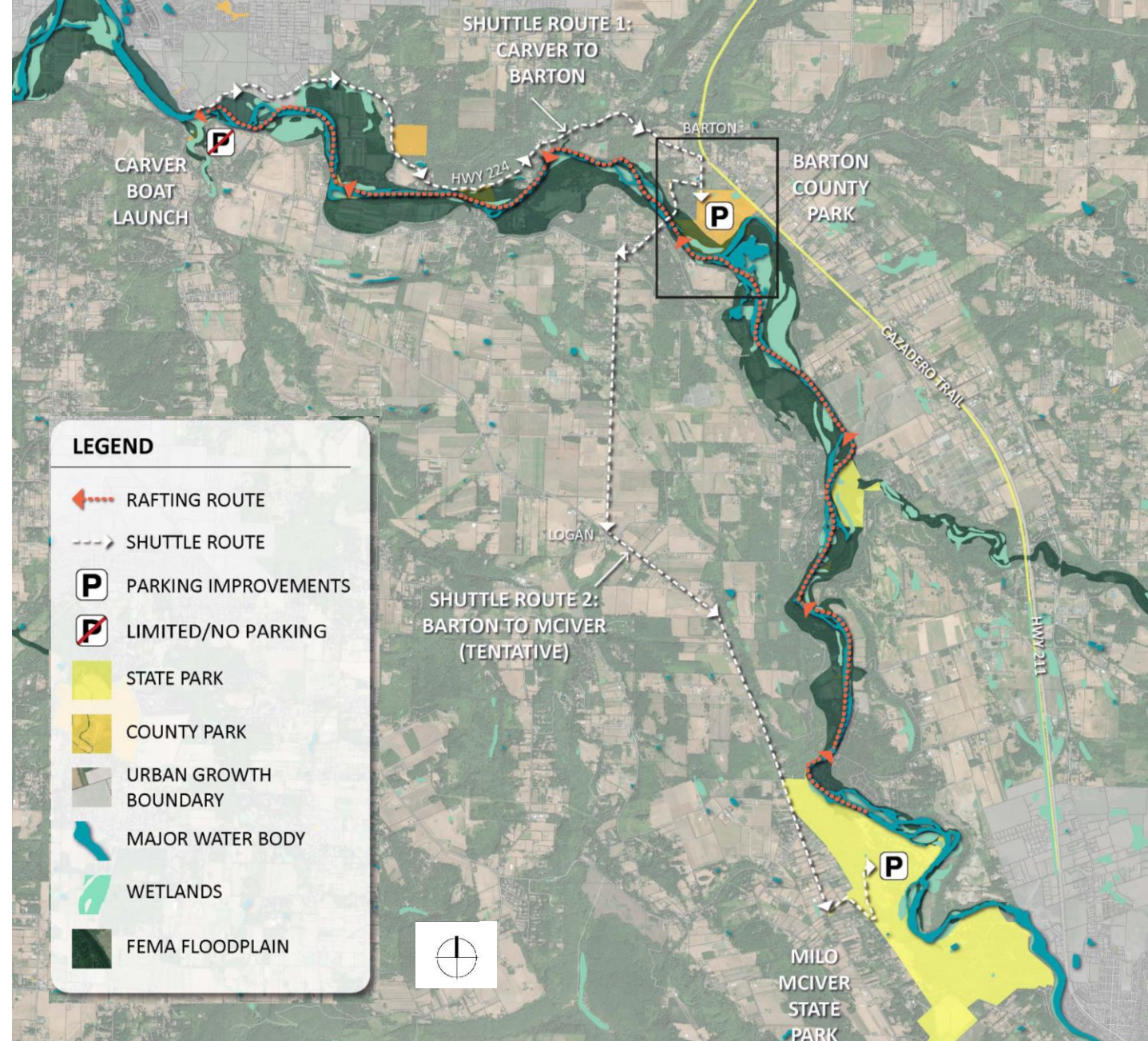
Project Background: Scope of Work

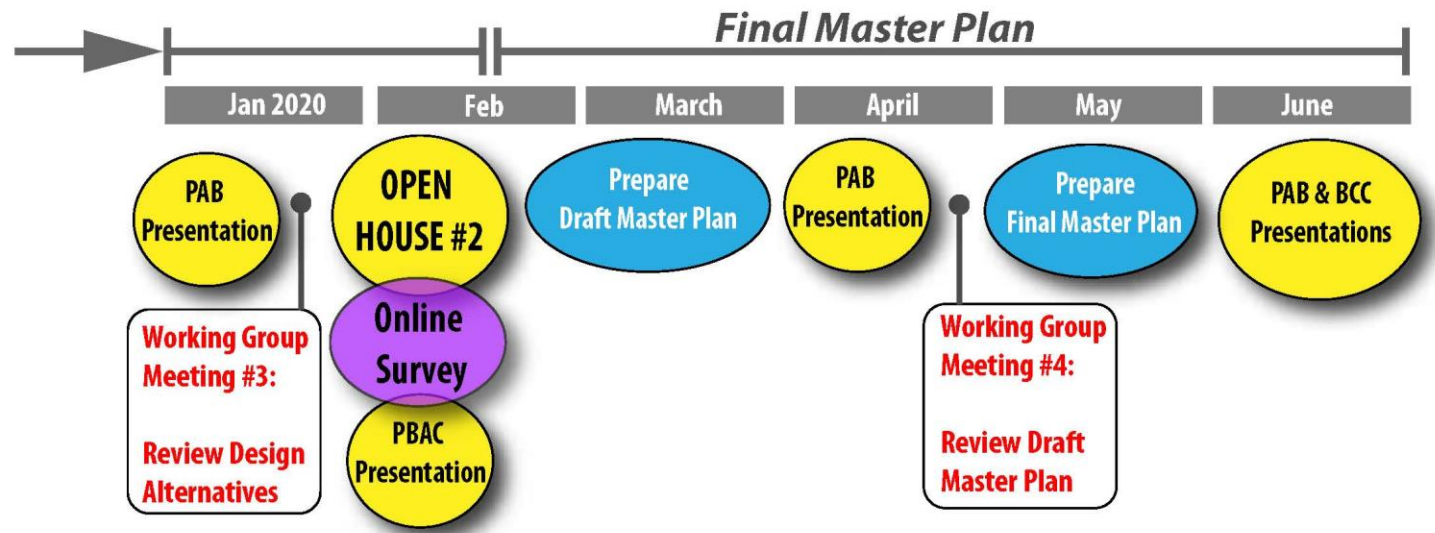
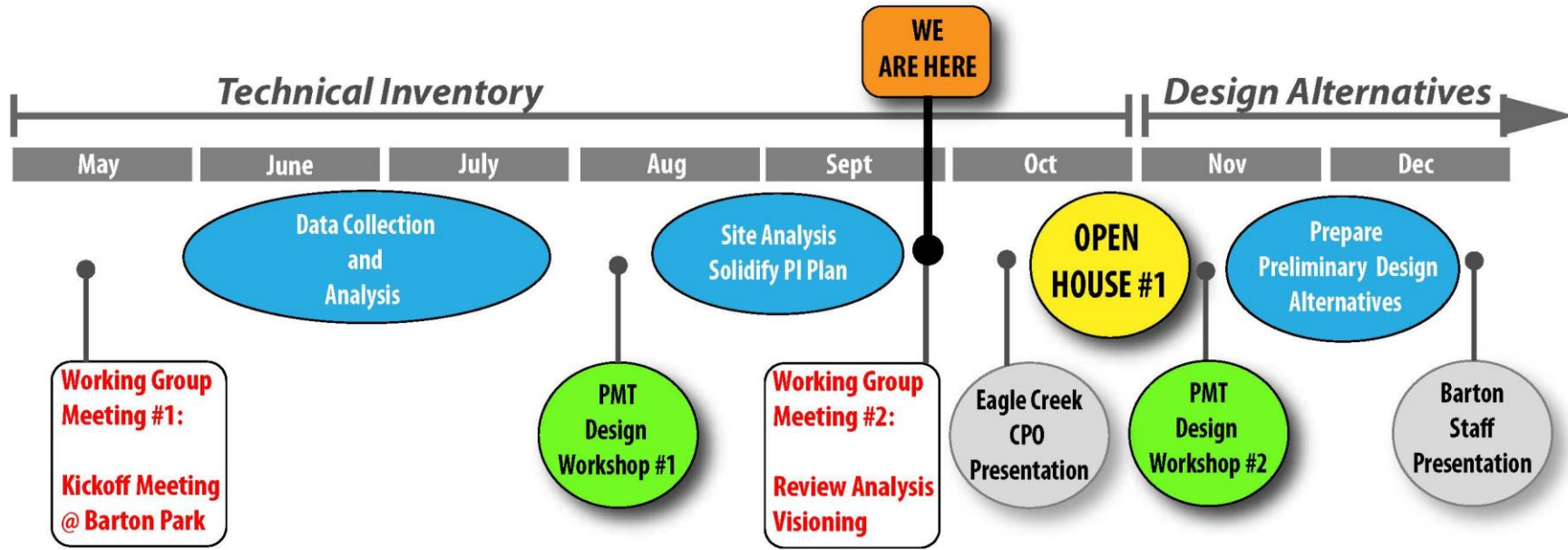
Goal of Shuttle Analysis:

- *Understand options for implementing a floater-shuttle*
- *Reduce negative impacts on Barton and Carver Parks*

Methods:

- *Analyze several options for a shuttle system between Barton and Carver parks*
- *Rank each option by selected criteria:*
 - *Revenue production,*
 - *Impacts to park operations,*
 - *Spatial effects on park facilities*

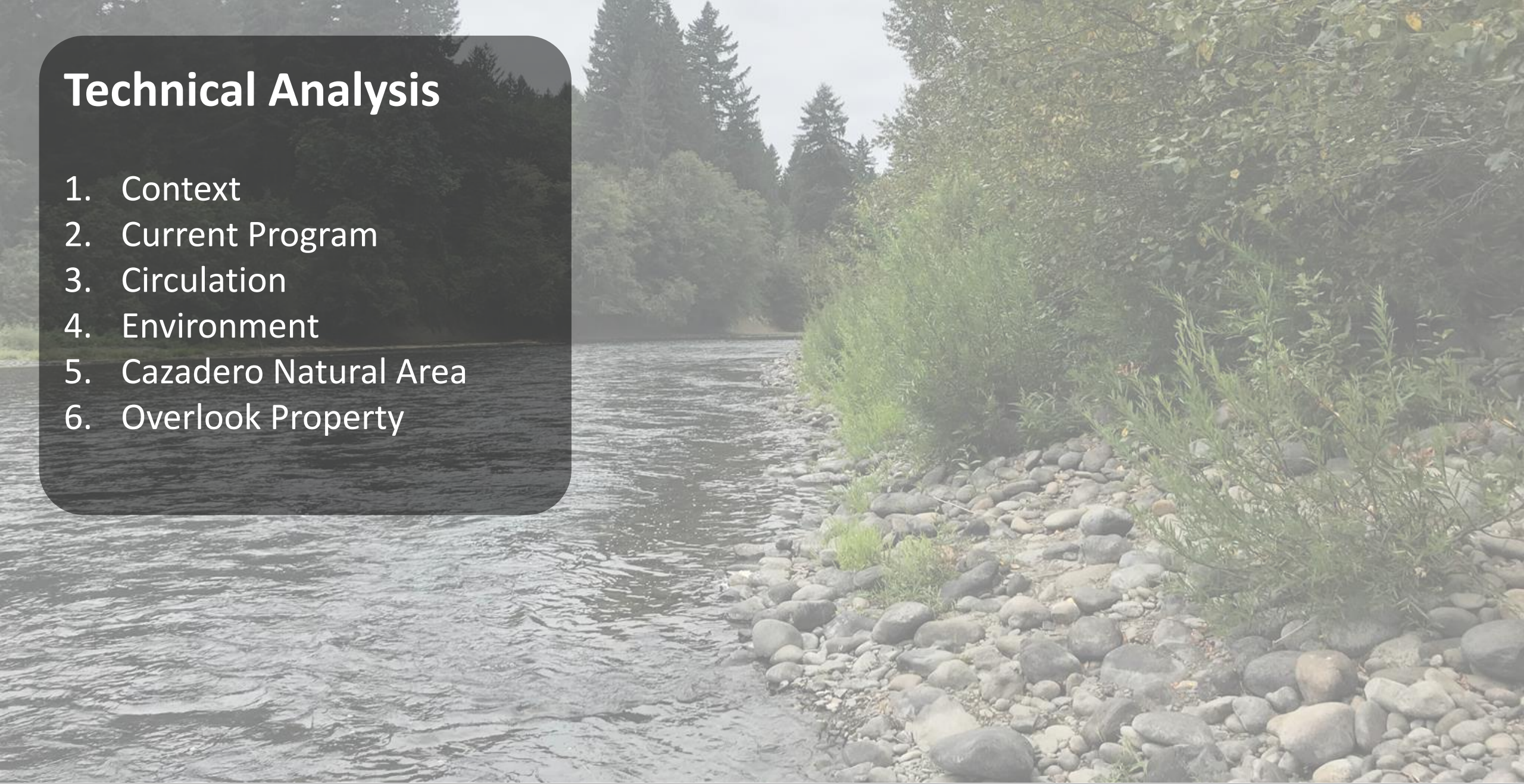




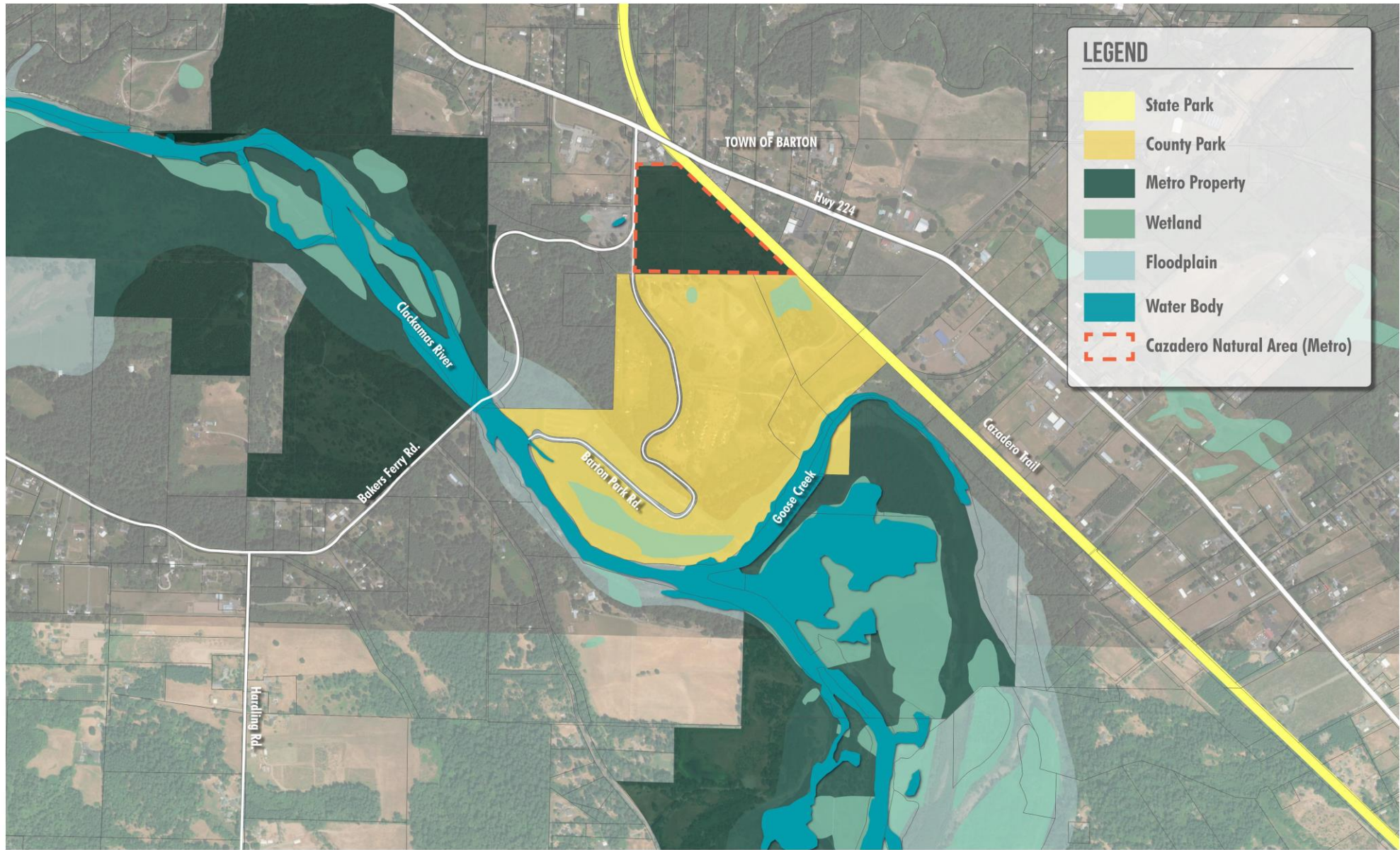
PMT: Project Management Team
 CPO: Community Planning Org.
 PAB: Parks Advisory Board
 PBAC: Ped. and Bike Advisory Committee
 BCC: Board of County Commissioners

Technical Analysis

1. Context
2. Current Program
3. Circulation
4. Environment
5. Cazadero Natural Area
6. Overlook Property









- ### SITE KEY
- 1 Cazadero Natural Area (Metro)
 - 2 Barton Stockpile (DTD)
 - 3 Overlook Property
 - 4 RV Camping (37 spots)
 - 5 RV/Tent Camping (64 spots)
 - 6 Barton Quarry Site
 - 7 Day Use Area

- ### PROGRAM KEY
- Restrooms
 - Reservable Picnic Shelter
 - Reservable Picnic Table
 - P Parking (400 stalls)
 - P Overflow Parking (400 stalls)
 - RV Dump Station
 - Boat Ramp
 - Primitive Camping (7 spots)
 - Play Area
 - Camp Host
 - Ticket Booth
 - Caretaker
 - Ranger Station
 - Event Pavilion
 - Volleyball
 - Ball Field
 - Cabin
 - Group Camping

- ### LEGEND
- Floodplain
 - Ponds
 - Property Boundary
 - County Road
 - Park Road
 - Camp Road
 - Walking Trail
 - Stream
 - Seasonal Side Channel
 - 10' Contours





- ### SITE KEY
- 1 Cazadero Natural Area (Metro)
 - 2 Barton Stockpile (DTD)
 - 3 Overlook Property
 - 4 RV Camping (37 spots)
 - 5 RV/Tent Camping (64 spots)
 - 6 Barton Quarry Site
 - 7 Day Use Area

- ### PROGRAM KEY
- P** Parking (400 stalls)
 - P** Overflow Parking (400 stalls)

- ### LEGEND
- Floodplain
 - Ponds
 - Property Boundary
 - County Road
 - Park Road
 - Camp Road
 - Walking Trail
 - Stream
 - Seasonal Side Channel
 - 10' Contours





- ### SITE KEY
- 1 Cazadero Natural Area (Metro)
 - 2 Barton Stockpile (DTD)
 - 3 Overlook Property
 - 4 RV Camping (37 spots)
 - 5 RV/Tent Camping (64 spots)
 - 6 Barton Quarry Site
 - 7 Day Use Area

- ### PROGRAM KEY
- Caretaker
 - Ranger Station
 - Ticket Booth
 - RV Dump Station

- ### LEGEND
- Floodplain
 - Ponds
 - Property Boundary
 - County Road
 - Park Road
 - Camp Road
 - Walking Trail
 - Stream
 - Seasonal Side Channel
 - 10' Contours



- ### SITE KEY
- 1 Cazadero Natural Area (Metro)
 - 2 Barton Stockpile (DTD)
 - 3 Overlook Property
 - 4 RV Camping (37 spots)
 - 5 RV/Tent Camping (64 spots)
 - 6 Barton Quarry Site
 - 7 Day Use Area

- ### PROGRAM KEY
- P Parking (400 stalls)
 - P Overflow Parking (400 stalls)
 - Restrooms
 - Reservable Picnic Shelter
 - Reservable Picnic Table
 - Boat Ramp
 - Play Area
 - Event Pavilion
 - Volleyball
 - Ball Field

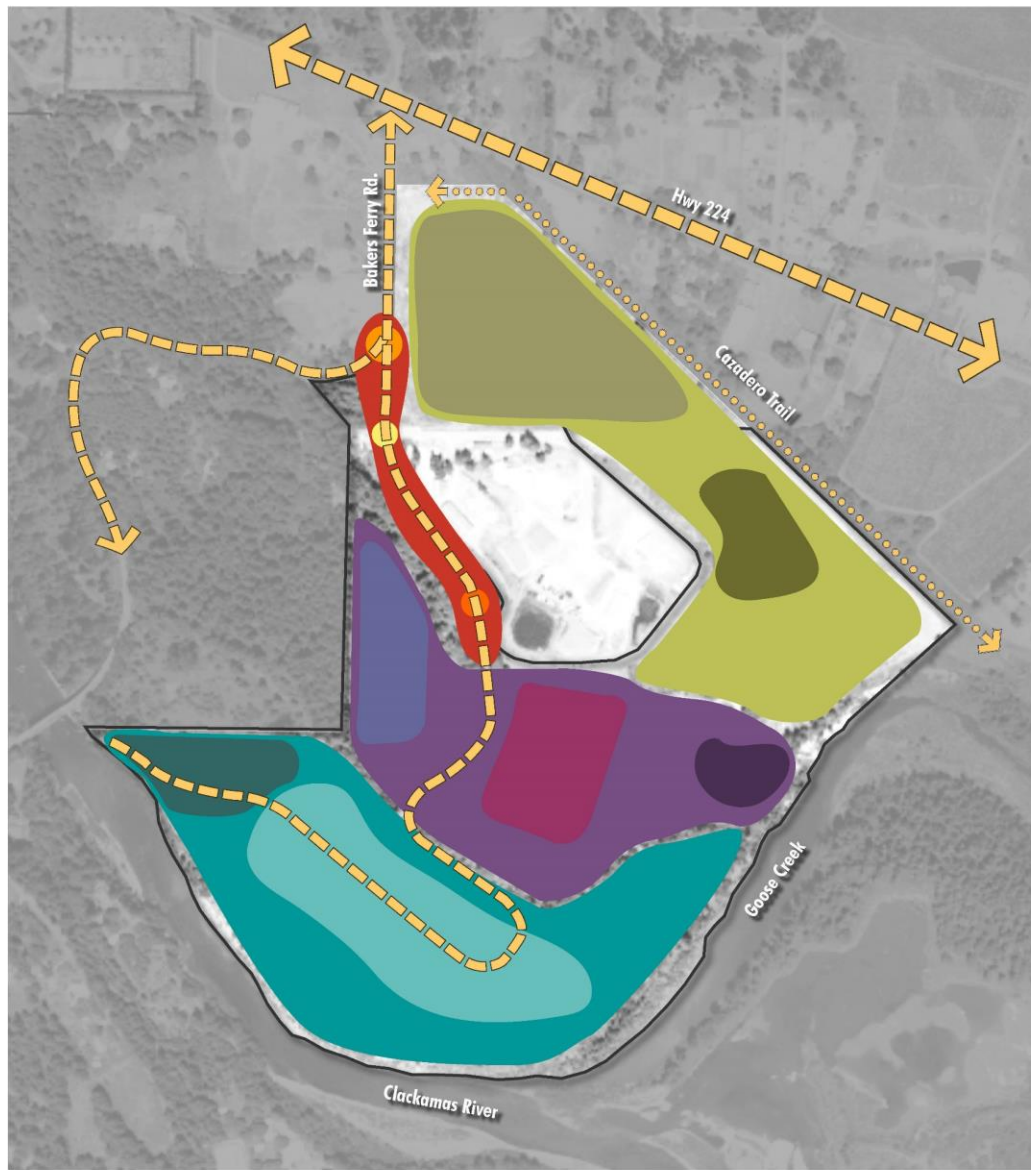
- ### LEGEND
- Floodplain
 - Ponds
 - Property Boundary
 - County Road
 - Park Road
 - Camp Road
 - Walking Trail
 - Stream
 - Seasonal Side Channel
 - 10' Contours



- ### SITE KEY
- 1 Cazadero Natural Area (Metro)
 - 2 Barton Stockpile (DTD)
 - 3 Overlook Property
 - 4 RV Camping (37 spots)
 - 5 RV/Tent Camping (64 spots)
 - 6 Barton Quarry Site
 - 7 Day Use Area

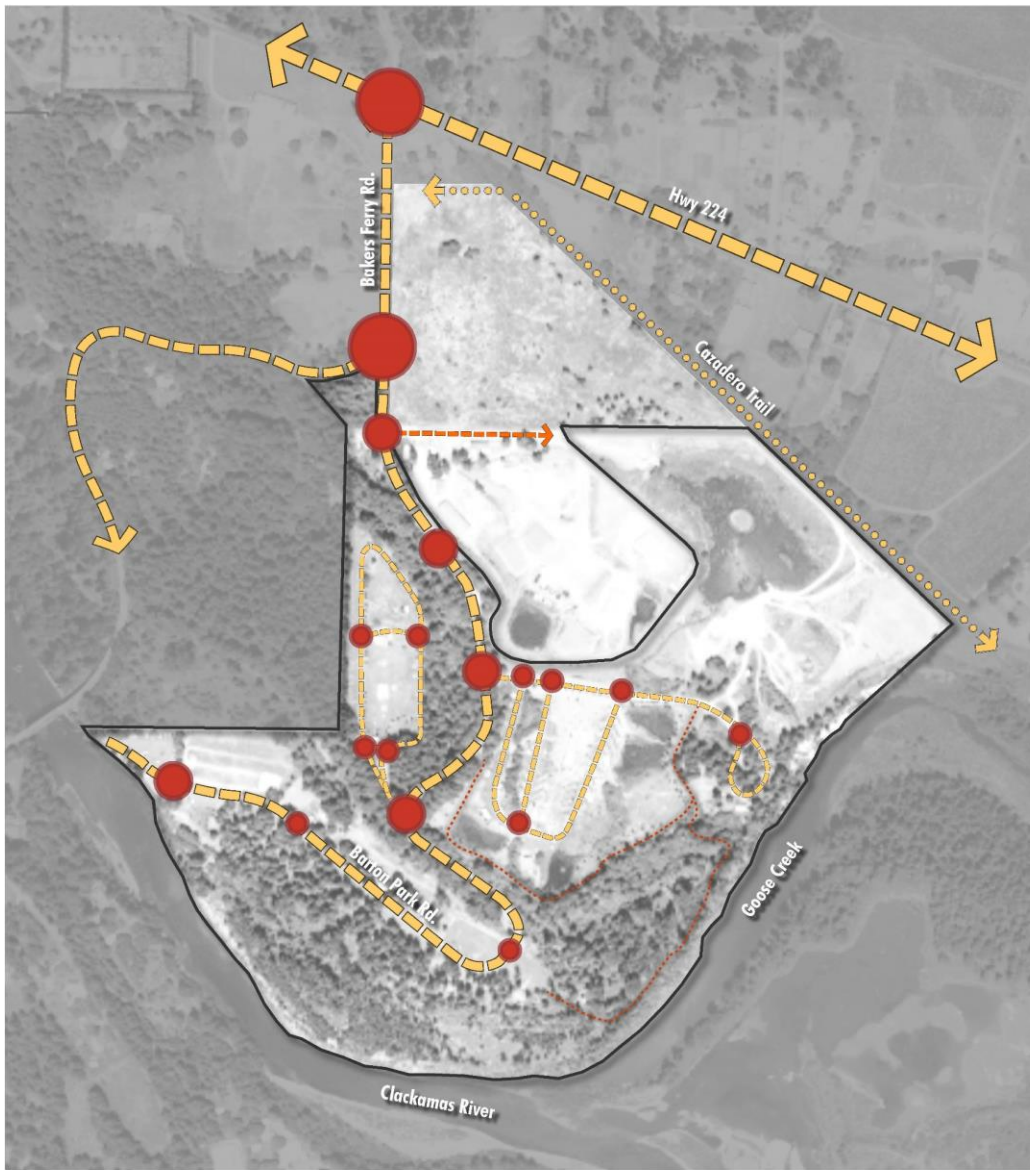
- ### PROGRAM KEY
- Restrooms
 - Reservable Picnic Shelter
 - Play Area
 - Primitive Camping (7 spots)
 - Camp Host
 - Cabin
 - Group Camping

- ### LEGEND
- Floodplain
 - Ponds
 - Property Boundary
 - County Road
 - Park Road
 - Camp Road
 - Walking Trail
 - Stream
 - Seasonal Side Channel
 - 10' Contours



LEGEND

- Primary Vehicular Circulation
- Bicycle, Pedestrian and Equestrian Circulation
- Entry Zone**
 - Entry Intersection
 - Ranger Station
 - Ticket Booth
- Overnight Zone**
 - Tent/RV Campground
 - RV Campground
 - Overlook Property
- Day Use Zone**
 - Picnic and Parking
 - River Access
- Upper Plateau Zone**
 - Cazadero Natural Area
 - Quarry Pond



LEGEND

- Vehicular Circulation
- Barton Stockpile Vehicular Circulation (Not Public)
- Bicycle, Pedestrian, Equestrian Circulation
- Pedestrian Circulation
- High Impact Decision Making Moment
- Medium Impact Decision Making Moment
- Low Impact Decision Making Moment

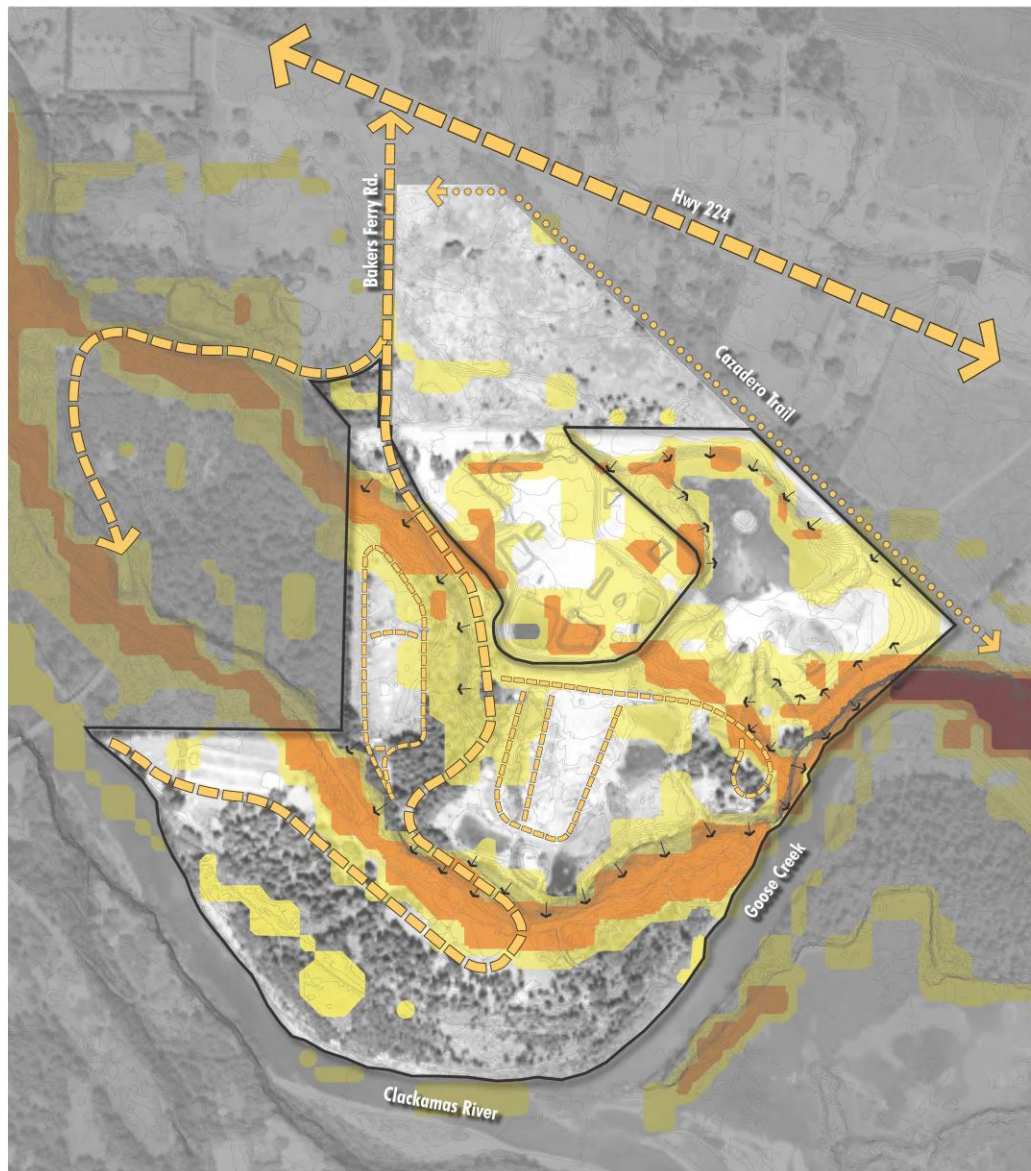




Environmental Analysis: Local Context





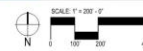
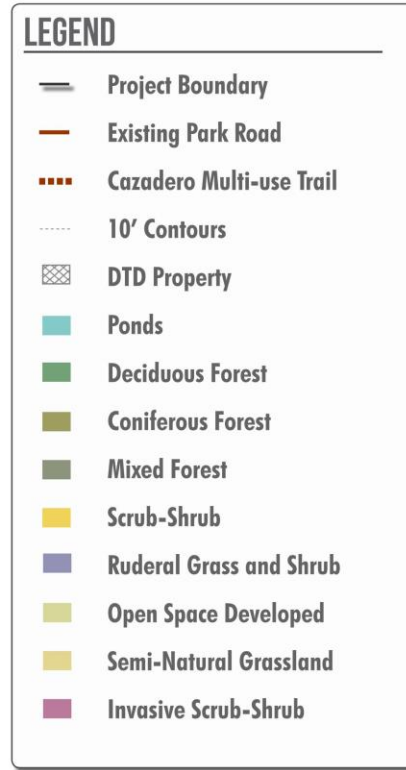
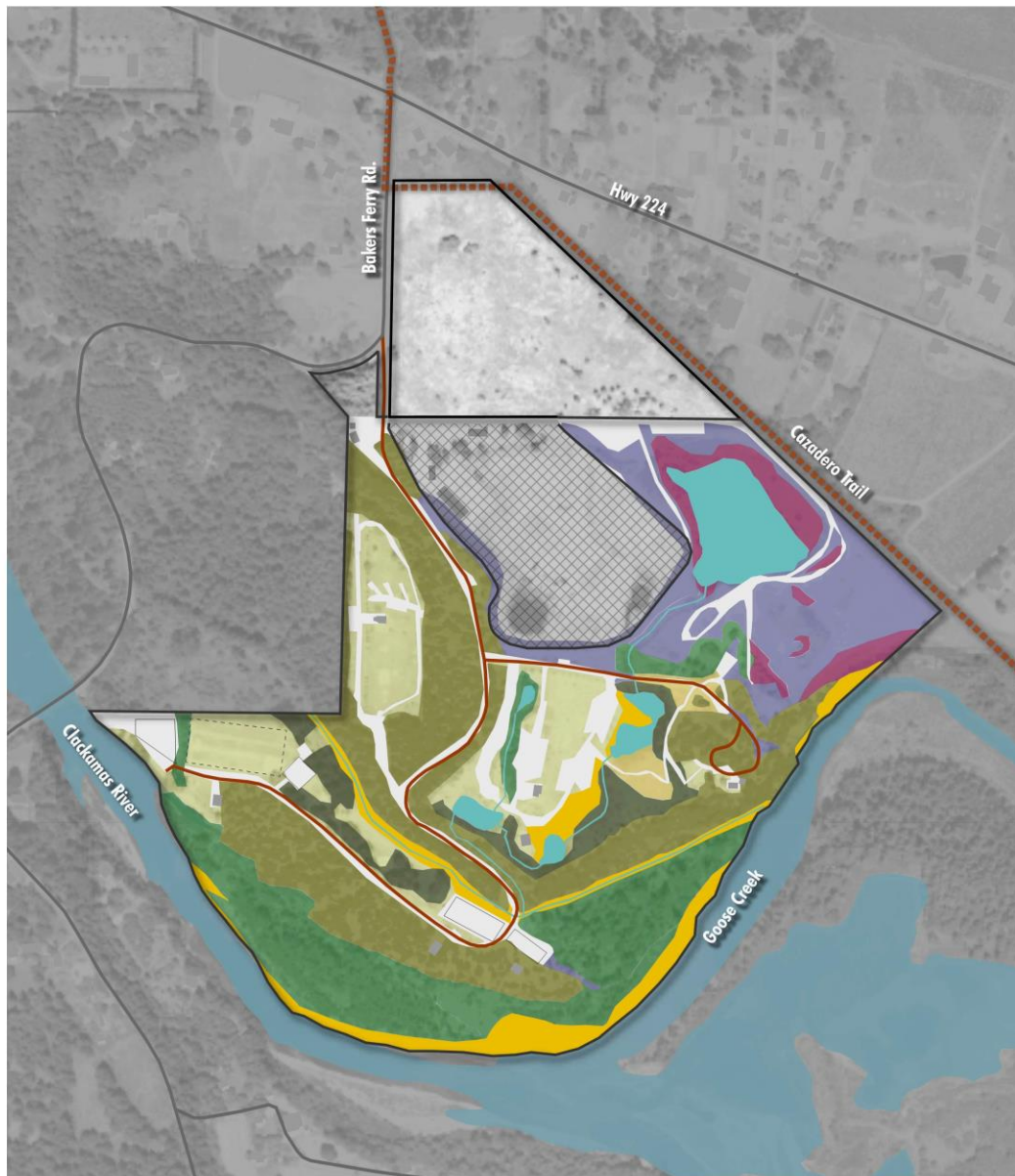


Sources: Clackamas County, DOGAMI, Metro RLIS



LEGEND

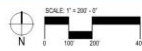
- Vehicular Circulation
- Bicycle, Pedestrian and Equestrian Circulation
- Slope Direction
- Landslide Possible
- Landslide Likely
- Existing Landslide





LEGEND

- Project Boundary
- Existing Park Road
- Cazadero Multi-use Trail
- 10' Contours
- Existing Fence
- DTD Property
- Ponds
- Floodplain
- Wetlands
- Riparian Forest
- Forest - Deciduous, Coniferous, Mixed
- Restored Mixed Forest (Metro)
- Revegetation/Reforestation Opportunity
- Pond Bank Restoration Opportunity
- River/Stream Bank Restoration Opportunity
- Seasonal Streams
- Potential Habitat Connectivity





Existing Conditions

- Upland forest: mix of deciduous and conifer tree species
- Shrub and herbaceous layers: native and non-native species
- No identified sensitive areas or unique/rare plant or wildlife species

Considerations for Future Development

- Maintain a core habitat patch for wildlife
- Promote wildlife connectivity
- Retain mature trees

Potential Projects

- Invasive weed treatment
- Pre-commercial thinning
- Modify existing fence lines to promote wildlife connectivity

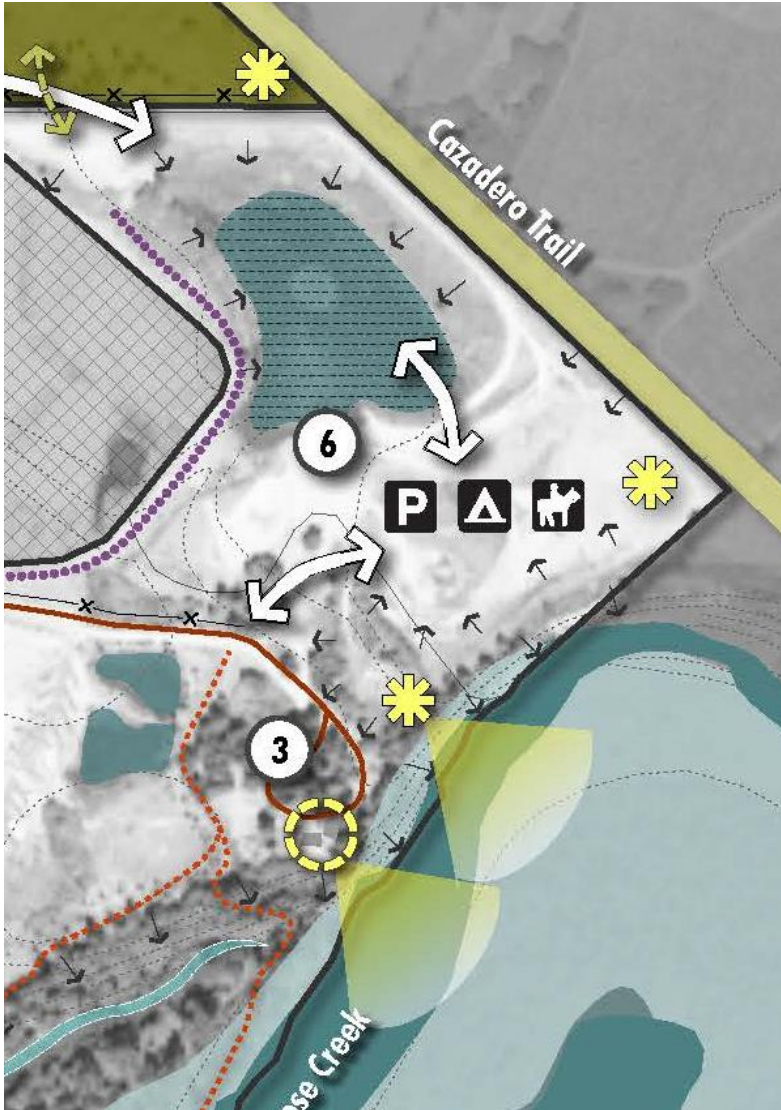
Overlook Property

Opportunities

- Renovate Fandrich house for large group rentals (events, school groups, etc.)
- Potential for adding campsites (primitive, cabins, yurts)
- Good views of Goose Creek and River Island from house and site
- Potential for unique facility to draw different users at existing overlook “mound”

Constraints

- House needs significant interior renovation and infrastructure investment
- More intense uses would require additional utility infrastructure



LEGEND	
	Project Boundary
	Existing Park Road
	Existing Walking Trail
	10' Contours
	Auto Congestion at Peak Hours
	Vehicular Noise and Speed
	Security Fence
	Trail Extension and Connection
	Wildlife Connectivity
	Potential Connection
	Improve or Redesign Circulation
	Improve Existing Amenity
	Potential Trail or River Amenity
	Wildlife Habitat
	DTD Property
	Water Recreation
	Water
	Floodplain
	Wetlands
	Views



Quarry Site

Opportunities

- Alternative site for amenities to serve and connection to Cazadero Trail (trailhead, parking lot, hiker-biker campsites)
- Maintain pond for recreational uses (swimming, fly casting, warmwater fishing, boardwalk, non-motorized boating)
- Potential overflow parking area for floaters or shuttle
- Provide parking for any new recreational areas
- Potential recreational programming include campsites (equestrian, primitive, cabins, yurts), educational overlooks and nodes, picnic areas and shelters
- Provide trail connection to day use area along the river
- Good views of Goose Creek/River Island from bluff

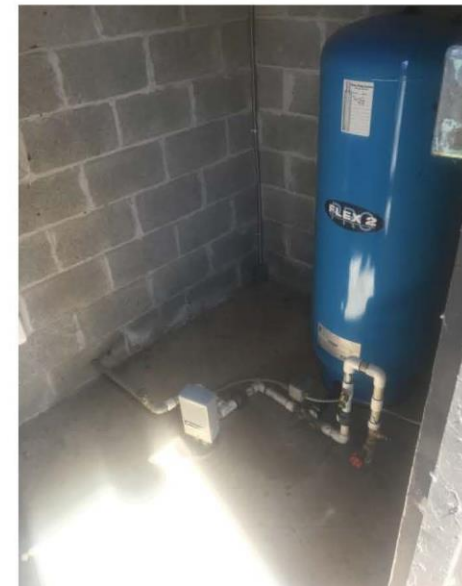
Constraints

- Significant grade change at pond and property boundaries
- Vehicular access and circulation through DTD and/or Metro properties (need to minimize overlap with park user traffic) or via East Campground road (need to minimize impacts to campground user experience)
- Intensive use would require additional utility infrastructure
- Exposed site; minimal canopy coverage
- Views of DTD Stockpile site are out of character for park setting













Barton Park - Current Funding Picture

- Barton Park is funded through the global budget of the Clackamas County Parks Department.
- Primary sources of existing revenue include:
 - Parking fees
 - Timber sales
 - Golf course related fees
 - Concession sales

Barton Park - Current Funding Picture

- Clackamas County Parks major costs include
 - Personnel (5.64 FTE)
 - Capital outlay for
 - Land improvements, acquisitions, construction, operating equipment expenditures.

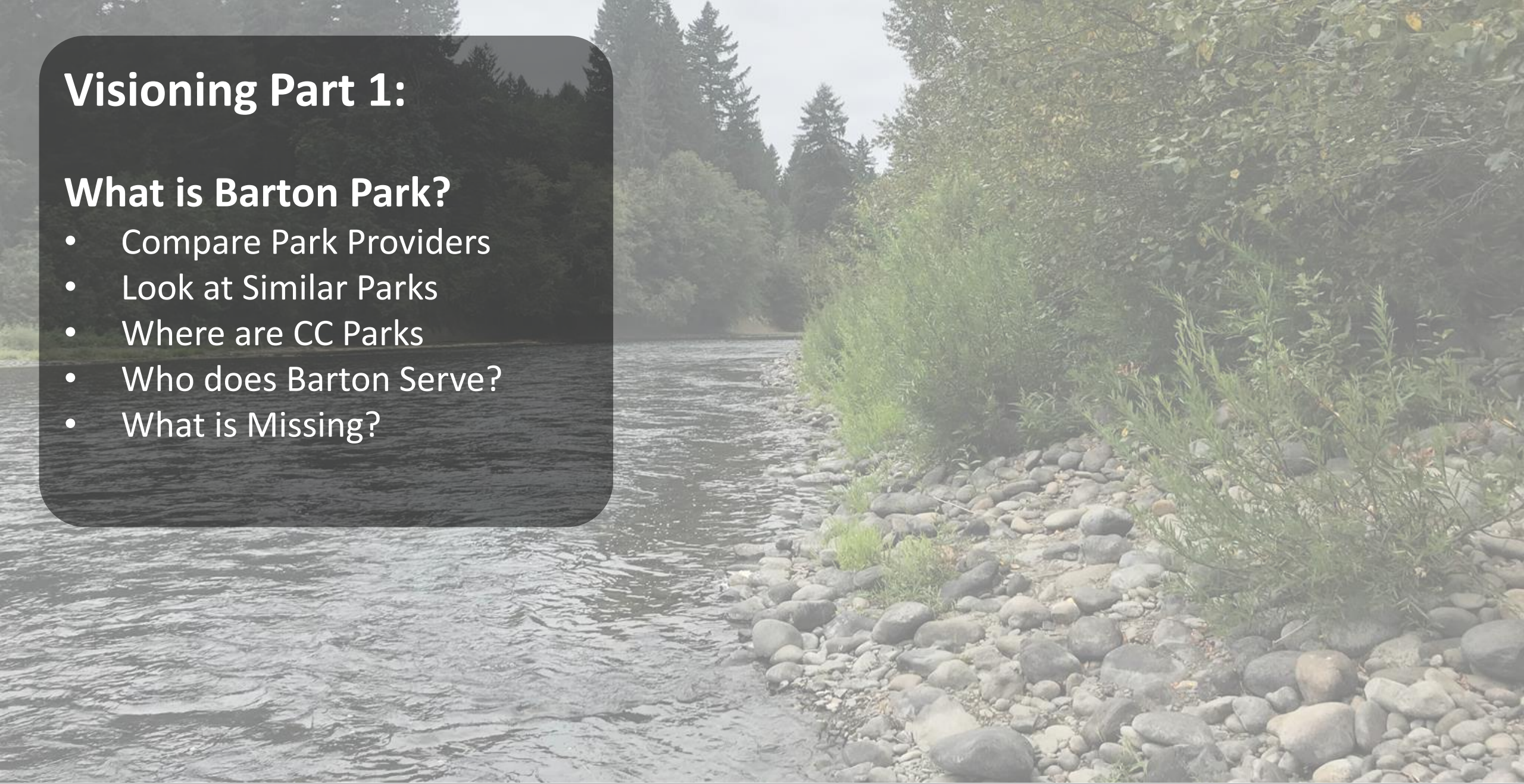
Barton Park - Current Funding Takeaways

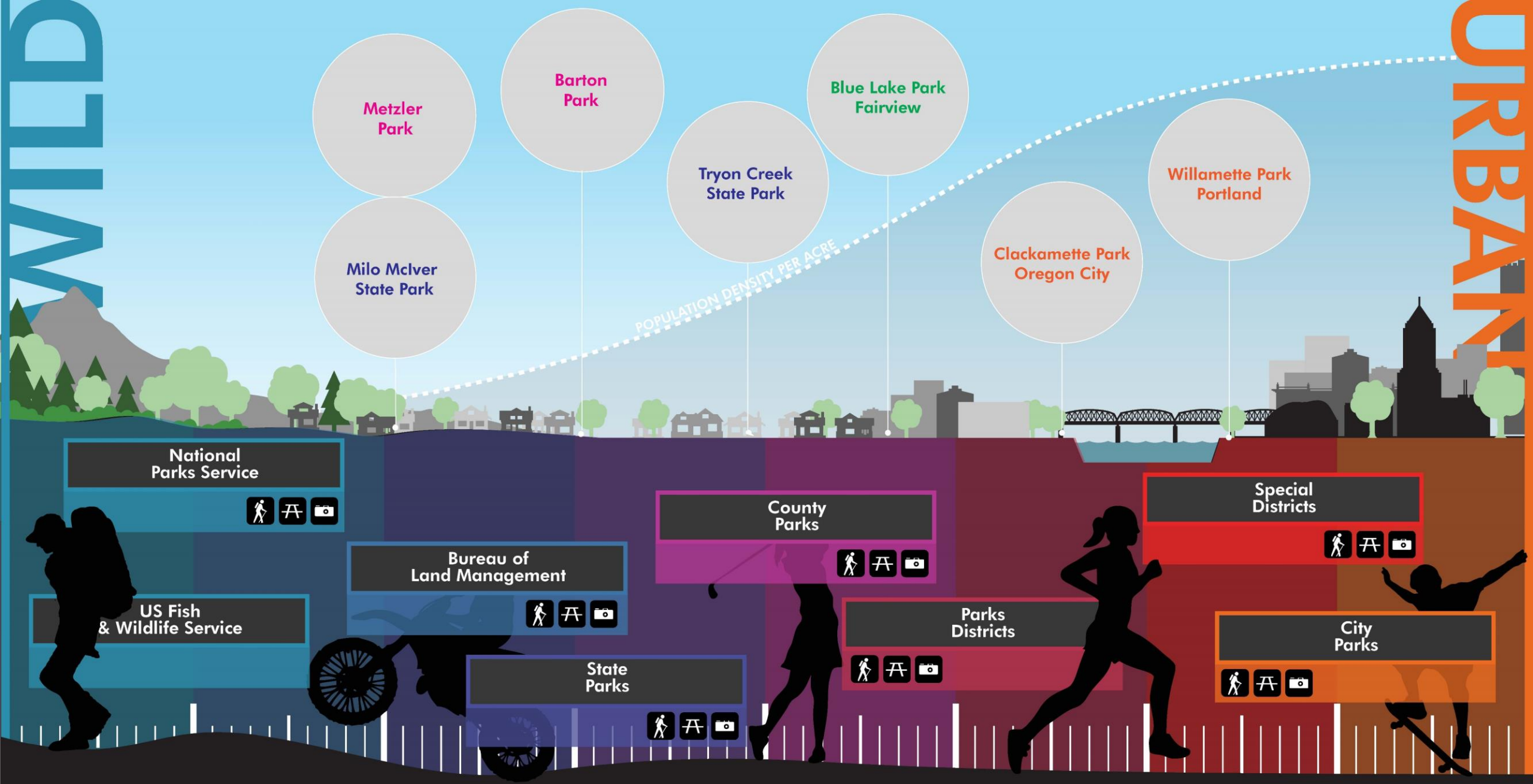
- The Parks budget is for the most part kept separate from the County's general budget.
 - Pro: insulated from budget cuts
 - Con: Inability to get GF funds
- Most current revenue comes from
 - Reservations (54%)
 - Parking Fees (34%)
- Opportunities for future funding
 - More fee services/amenities
 - Increased fees
 - Disposition of properties to fund core projects

Visioning Part 1:

What is Barton Park?

- Compare Park Providers
- Look at Similar Parks
- Where are CC Parks
- Who does Barton Serve?
- What is Missing?





Parks Comparison

City Parks:



WILLAMETTE PARK

- Portland, OR
- Portland Parks Owned and operated
- 26 acres
- Boat Launch, Fishing, Picnic Areas, Picnic Shelters, Restrooms, Walking Paths, Playground, Soccer, Tennis, Dog Park



CLACKAMETTE PARK

- Oregon City, OR
- City of Oregon City Parks owned and operated
- 25 acres
- Boat Launch, Fishing, Picnic Area, Picnic Shelter Skatepark, RV Camping, Restrooms, Playground, Walking Paths, Horseshoes

County Parks:



BARTON PARK

- Barton, OR **35 Min Drive from Portland**
- Clackamas County Parks owned and operated
- 150 acres
- Boat Launch, Fishing, Picnic Areas, (3) Picnic Shelters, Event Pavilion, Restrooms, 112 Campsites, Hiking Trails, Play Areas, Volleyball, Horseshoes, Ball Field, Hiking Trails (1.5 miles)



METZLER PARK

- Clackamas County, OR **45 Min Drive from Portland**
- Clackamas County Parks owned and operated
- 131 acres
- 75 Campsites, Picnic Area, (2) Picnic Shelters, Restrooms, Softball, Volleyball, Horseshoe, Playground, Fishing, Hiking (2.5 miles)

Metro Parks:



MILO MCIVER PARK

- Clackamas County, OR **45 Min Drive from Portland**
- Oregon State Parks owned and operated
- 952 acres
- Boat Launch, Fishing, Picnic Areas, Hiking Trails, Restrooms, Showers Wildlife Viewing, River Access, Hiker/Biker Camping, Tent Camping, Group Camping, Equestrian Trails, Disk Golf



TRYON CREEK STATE PARK

- Portland, OR
- Oregon State Parks owned and operated
- 658 acres
- Hiking, Biking, Equestrian, Wildlife Viewing, Visitor/Nature Center, Summer Camps, Picnic Shelter

State Parks:



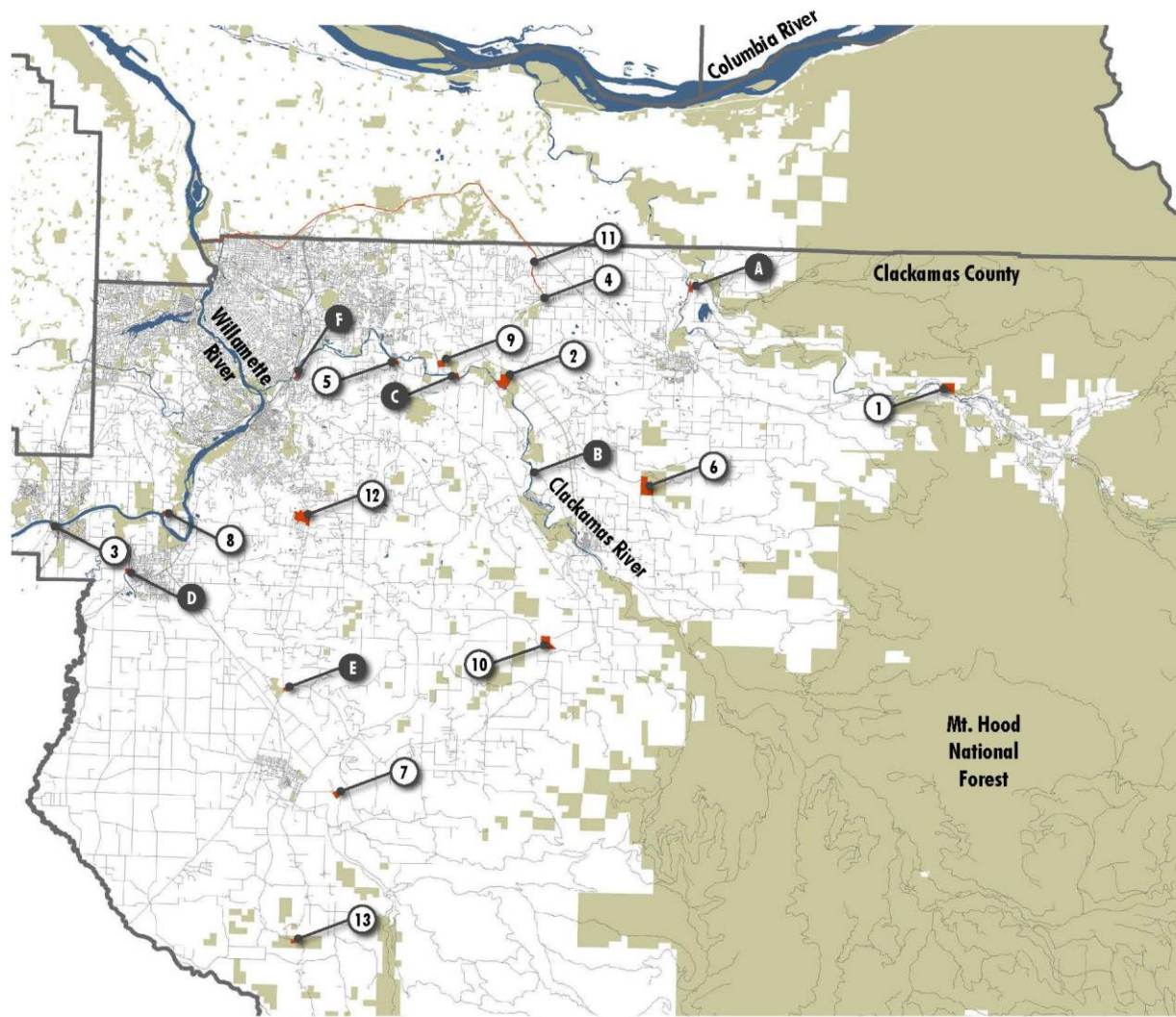
OXBOW REGIONAL PARK

- Gresham, OR **50 Min Drive from Portland**
- Metro owned and operated
- 1,000 acres
- Boat Launch, Fishing, Picnic Areas, Hiking Trails, Restrooms, Wildlife Viewing, River Access, Picnic Shelters, Play Areas, Amphitheater, Tent Camping, RV Camping, Free Life Jackets



BLUE LAKE PARK

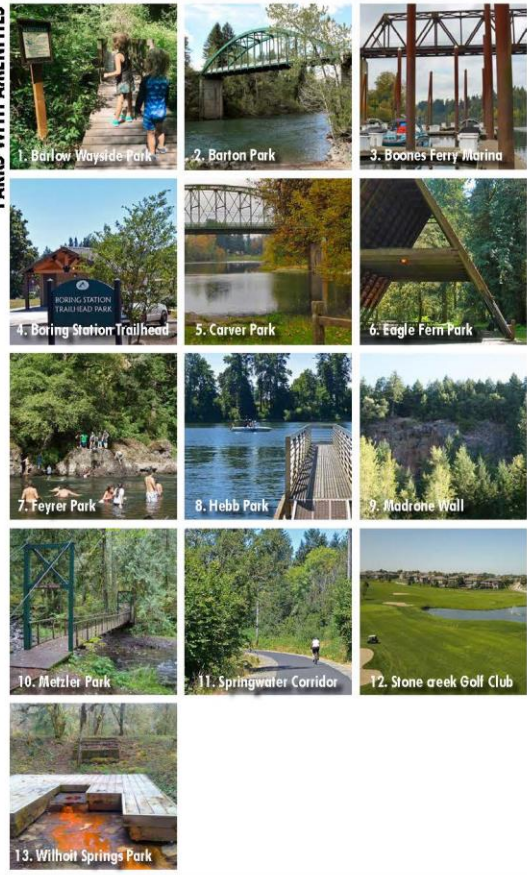
- Fairview, OR **20 Min Drive from Portland**
- Metro owned and operated
- 185 acres
- Fishing, Boat Rentals, Swimming, Picnic Areas, Picnic Shelters, Walking Paths, Restrooms, Wildlife Viewing, Spray pad, Playgrounds, Natural Discovery Garden, Horseshoes, Soccer, Basketball, Volleyball, Softball



LEGEND

- Parks, Natural Areas, Golf Courses
- County Properties
- Water
- Roads

PARKS WITH AMENITIES



PARKS WITHOUT AMENITIES



Camping

112 Campsites
103 w/ water and elect.
7 primitive, 1 group site
1 bunkhouse



Picnicking

3 Shelters
4 Uncovered
1 Pavillion



River Access

Boating, Fishing
Rafting, Wildlife
Viewing

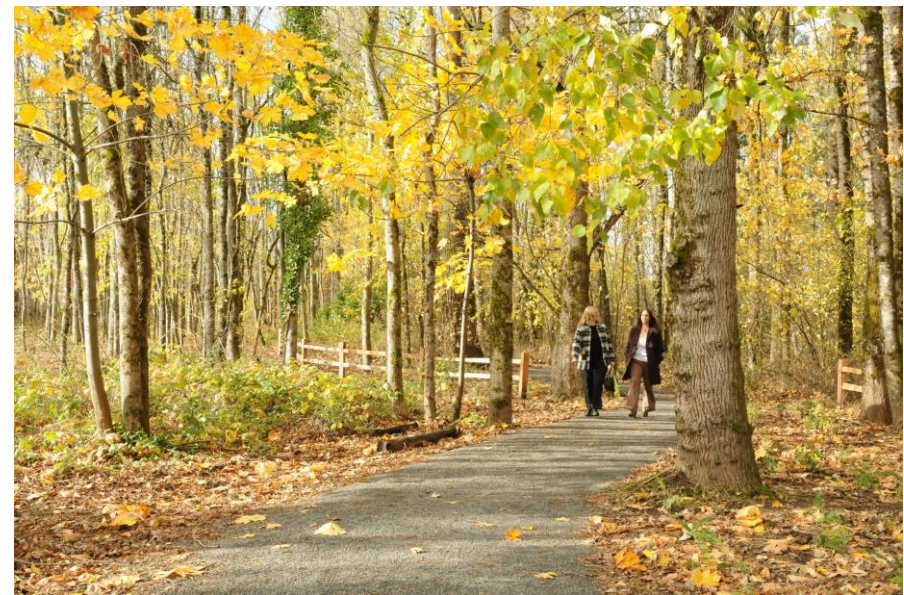


Hiking Trails

1.5 Miles

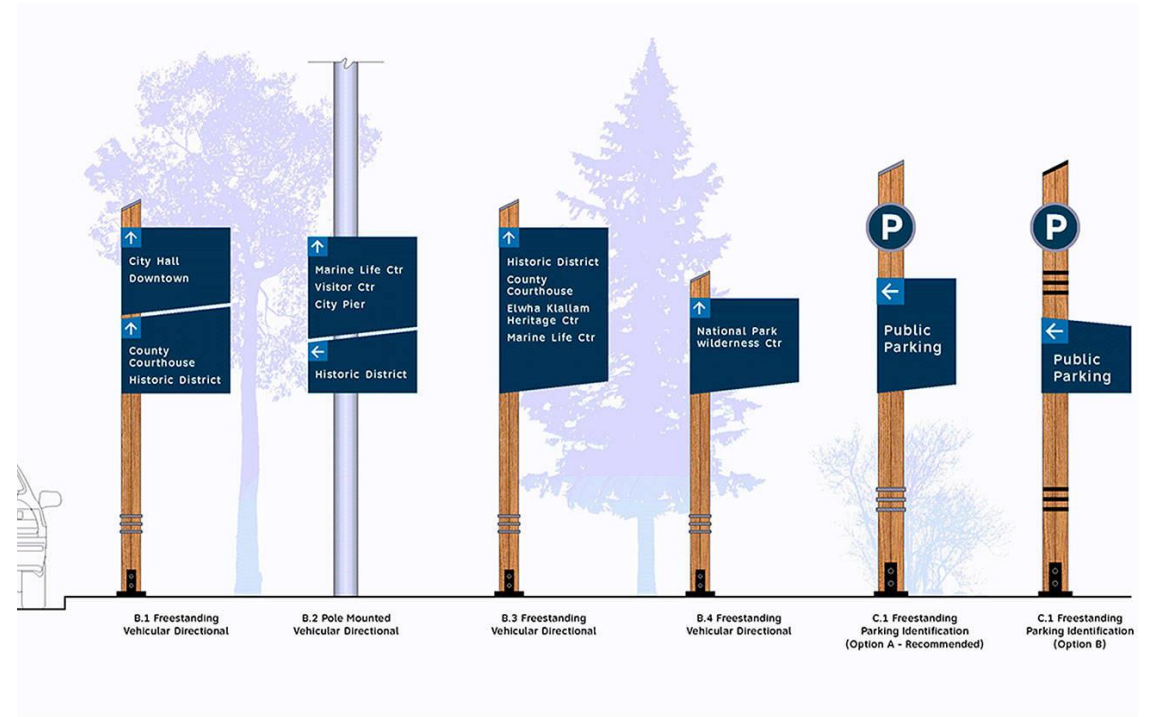
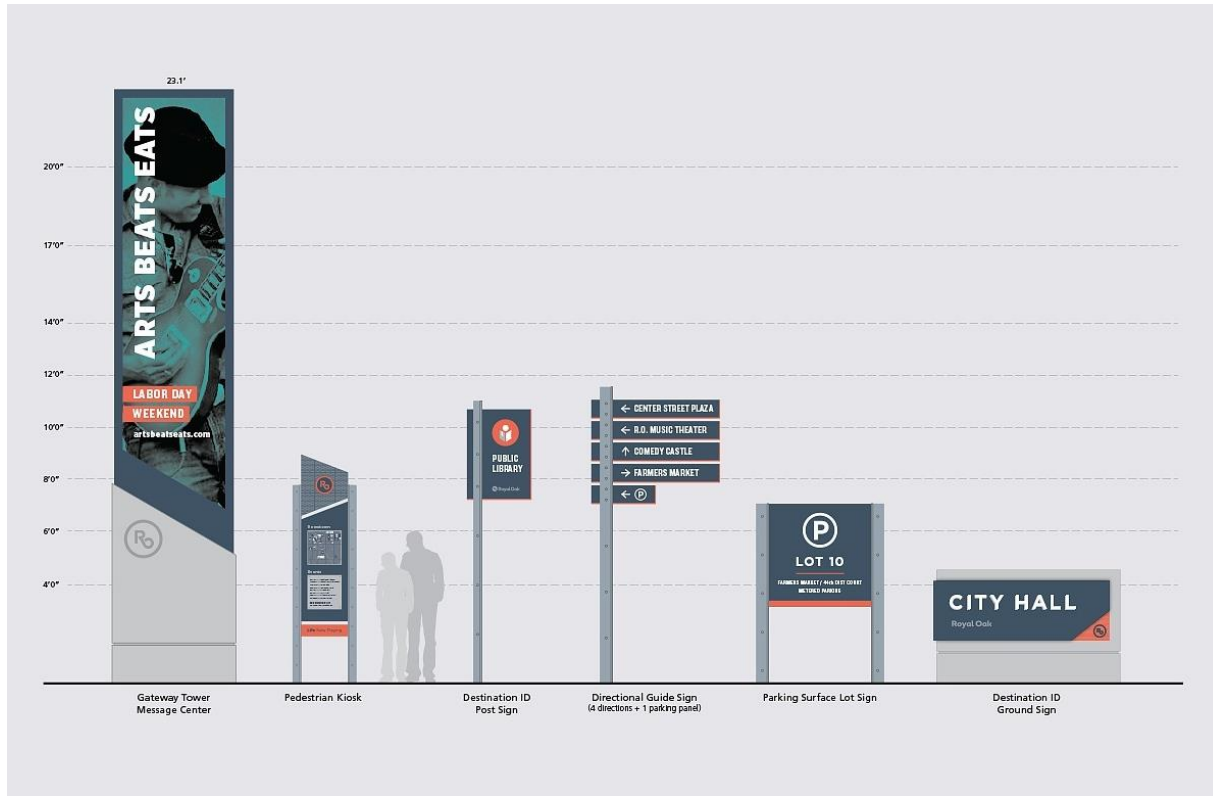








What is Missing?





Visioning Part 2: Guiding Principals

- Traffic/Safety
- User Experience
- Ecology/Environment
- Funding and Operations

1. Traffic and Safety

1. Removes Pedestrians from roads
2. Reduces Neighborhood Impacts
3. Improves Internal Vehicular Circulation
4. Minimizes Impact to DTD Stockpile Site

2. User Experience

1. Improves User Experience
2. Addresses Carrying Capacity Issues
3. Provides Diverse Recreational Options
4. Embraces the Unique Features of the Site

3. Ecology / Environment

1. Enhances Wildlife Connectivity
2. Considers Larger Scale Connectivity
3. Appropriate Locations and Scales of Development
4. Use of Green Infrastructure to Mitigate Impacts

4. Funding and Operations

1. Generates Revenue with a Balance of Uses
2. Identifies Feasible Projects
3. Streamlines Park Operations
4. Considers Potential Infrastructure Needs
5. Accomplishes IGA Between Metro and County

1. TRAFFIC AND SAFETY

1.1 Removes pedestrians from roads

- Provides safe pathway and trail system throughout park
- Reduces auto and non-auto conflicts (including pedestrians, bicycles, RVs, and trailers), especially when park is at capacity
- Considers opportunities for pedestrian access from park entrance to the river

1.2 Reduces neighborhood impacts

- Eliminates illegal parking along Baker's Ferry Rd.
- Reduces congestion at intersection of Baker's Ferry Road and Barton Park Rd.
- Reduces congestion at entry to Carver Boat Launch along Springwater Rd.

1.3 Improves internal vehicular circulation

- Redesign or reconfigures roads for more efficient flow of traffic
- Fewer decision points with opportunities for clear and consistent wayfinding
- Considers opportunities for pedestrian access from park entrance to the river

1.4 Minimizes impact to DTD Stockpile site

- Entry sequence from intersection to stockpile is clear and adequate for DTD operations
- Entry into stockpile is not impeded by new uses

2. USER EXPERIENCE

2.1 Improves park user experience

- Considers aesthetics and user's desires for accessing nature
- Provides safe and convenient access to and navigation within the park
- Considers the County's ability to maintain desired/proposed facilities and amenities
- Considers compatibility between different user groups when siting facilities and amenities
- Considers potential nuisance uses and activities when siting facilities and amenities
- Compliments and/or enhances existing uses in Barton Park

2.2 Addresses carrying capacity issues

- Right sizes facilities and amenities to balance available resources, such as parking, with number of users

2.3 Provides diverse recreation options

- Appeals to a wide variety of users, from single visitors to groups, able-bodied to disabled users, multi-generational, and including underserved populations
- Provides positive recreational experiences

2.4 Embraces Unique Features of the Site

- Enhances and allows access to natural features for the enjoyment of park users
- Embraces the Clackamas River as key amenity for park users

3. ECOLOGY/ENVIRONMENT

3.1 Enhances/promotes wildlife connectivity

- Site facilities, roads, and other amenities to avoid or minimize impacts to habitat size, fragmentation, and edge effects.
- Protect existing corridors and provide new connections where possible
- Restore degraded habitat areas where possible
- Consider resident and migratory species, especially protected or endangered species.

3.2 Considers Larger Scale Connectivity

- Recognizes and respond to adjacent natural resources – local context
- Recognizes and respond to regional natural resources – watershed context
- Considers urban growth trends and provides greenspace for future generations
- Considers clean air and water

3.3 Appropriate Location and Scales of Development

- Prioritizes flood resistant facilities in floodplain
- Avoids or limits development in sensitive areas, including wetlands, streams, and unstable areas
- Prioritize development in areas with existing disturbance over high value resources

3.4 Use of Green Infrastructure to mitigate ecological impacts

- manage stormwater to prevent runoff into and erosion along waterways

4. PARK FUNDING AND OPERATIONS

4.1 Generates revenue with a balance of uses

- Considers revenue generation of proposed facilities and amenities
- Considers additional operational costs

4.2 Identifies feasible projects

- Identifies priorities for phased implementation
- Consider cost and constructability for feasible projects

4.3 Streamlines park operations to better handle peak use

- Minimize need for increase in staffing
- New facilities are not complicating or difficult to maintain
- Peak use staffing demands are simplified

4.4 Accomplishes IGA between Metro and County

- Adheres to current IGA
- Provides a basis/plan for Metro and County to successfully move forward with developing trailhead amenities in the Cazadero Natural Area

4.5 Considers potential additional infrastructure needs

- Improves current water, sewer, and stormwater systems

1. Traffic and Safety

1. Removes Pedestrians from roads
2. Reduces Neighborhood Impacts
3. Improves Internal Vehicular Circulation
4. Minimizes Impact to DTD Stockpile Site

2. User Experience

1. Improves User Experience
2. Addresses Carrying Capacity Issues
3. Provides Diverse Recreational Options
4. Embraces the Unique Features of the Site

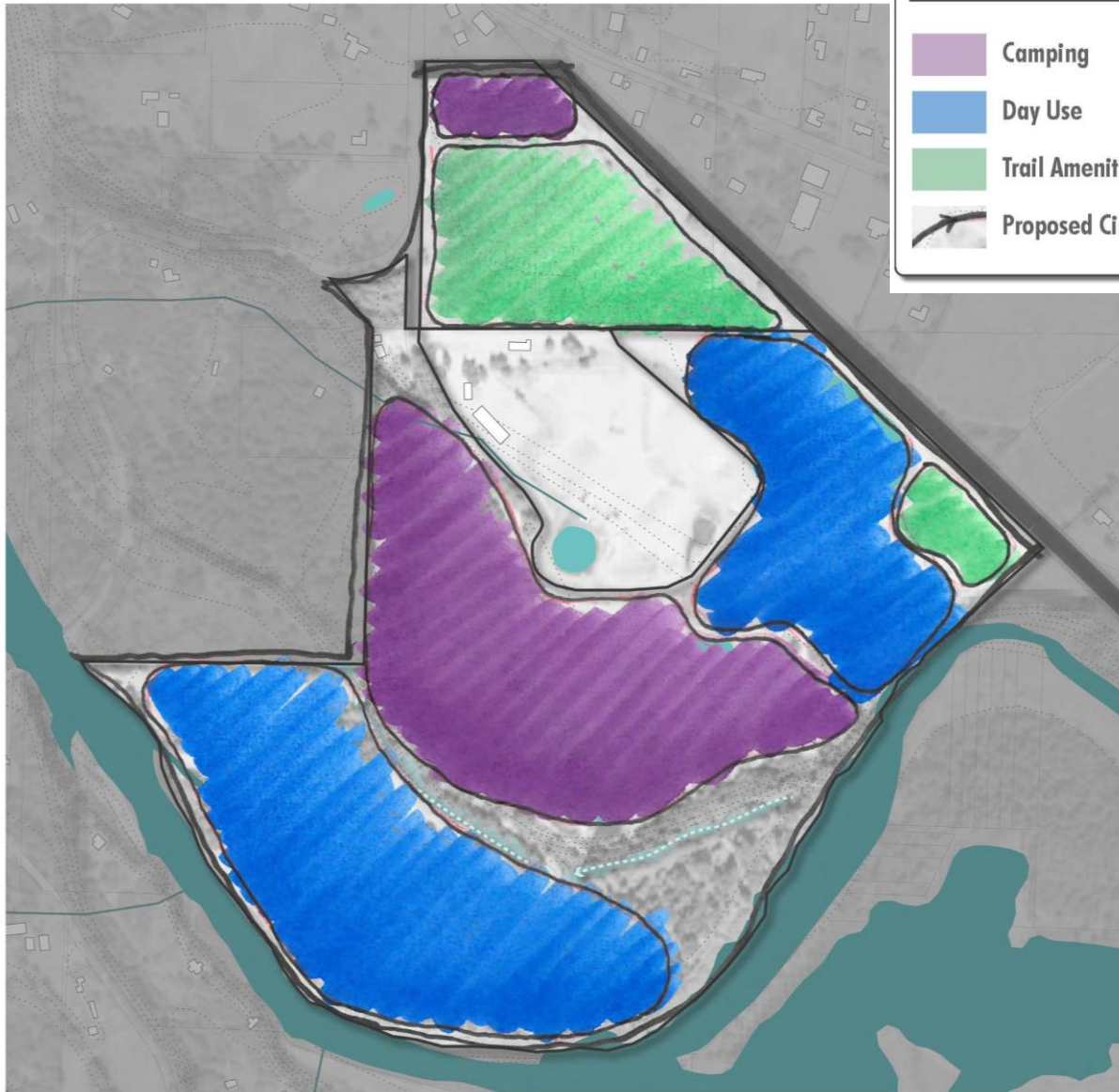
3. Ecology / Environment

1. Enhances Wildlife Connectivity
2. Considers Larger Scale Connectivity
3. Appropriate Locations and Scales of Development
4. Use of Green Infrastructure to Mitigate Impacts

4. Funding and Operations

1. Generates Revenue with a Balance of Uses
2. Identifies Feasible Projects
3. Streamlines Park Operations
4. Considers Potential Infrastructure Needs
5. Accomplishes IGA Between Metro and County





LEGEND

- Camping
- Day Use
- Trail Amenities
- Proposed Circulation

Overlook Property

- Increased group camping
- Add cabins and yurts
- Improve house for group camping
- Access quarry site amenities

Quarry Site

- Increase pond size for recreational use
- Trailhead for Cazadero Trail
- Pavilion for events overlooking Goose Creek

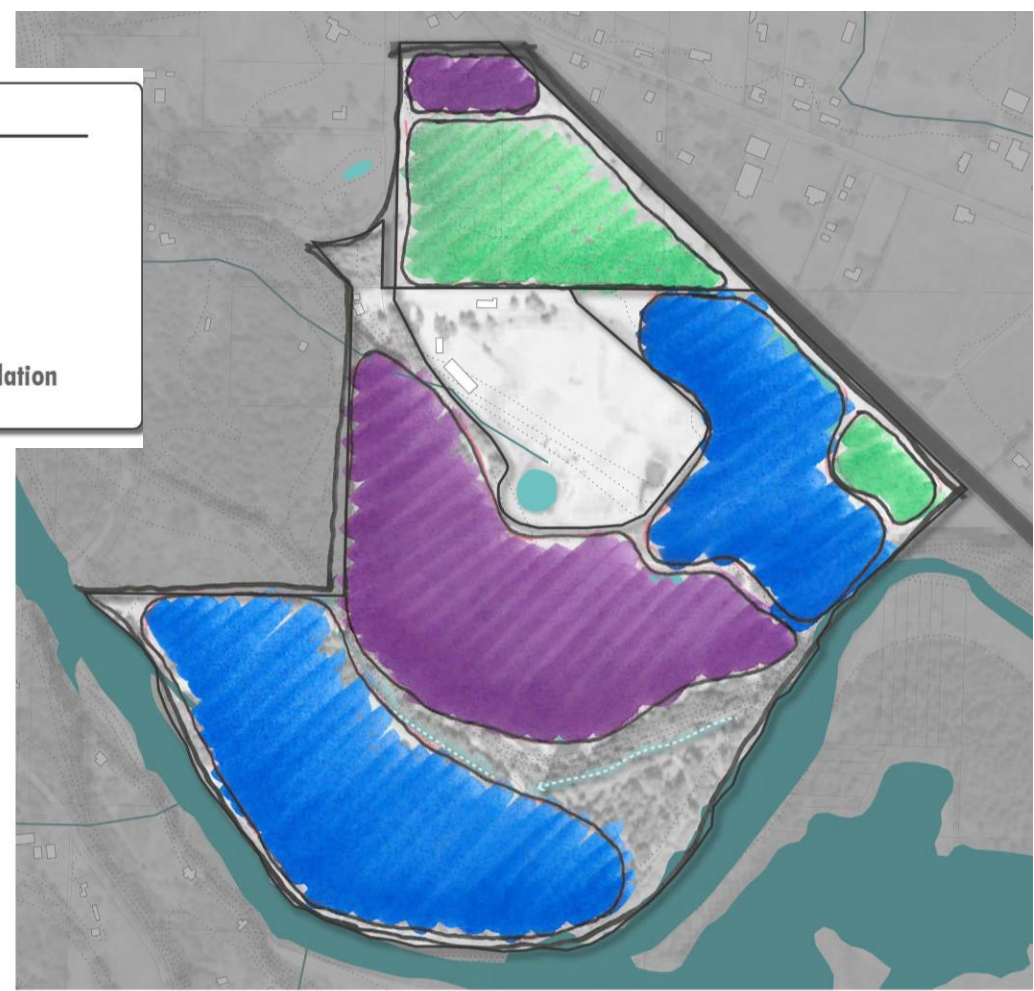
Cazadero Natural Area

- Hiker/Biker camp in north corner away from DTD
- Contiguous restoration



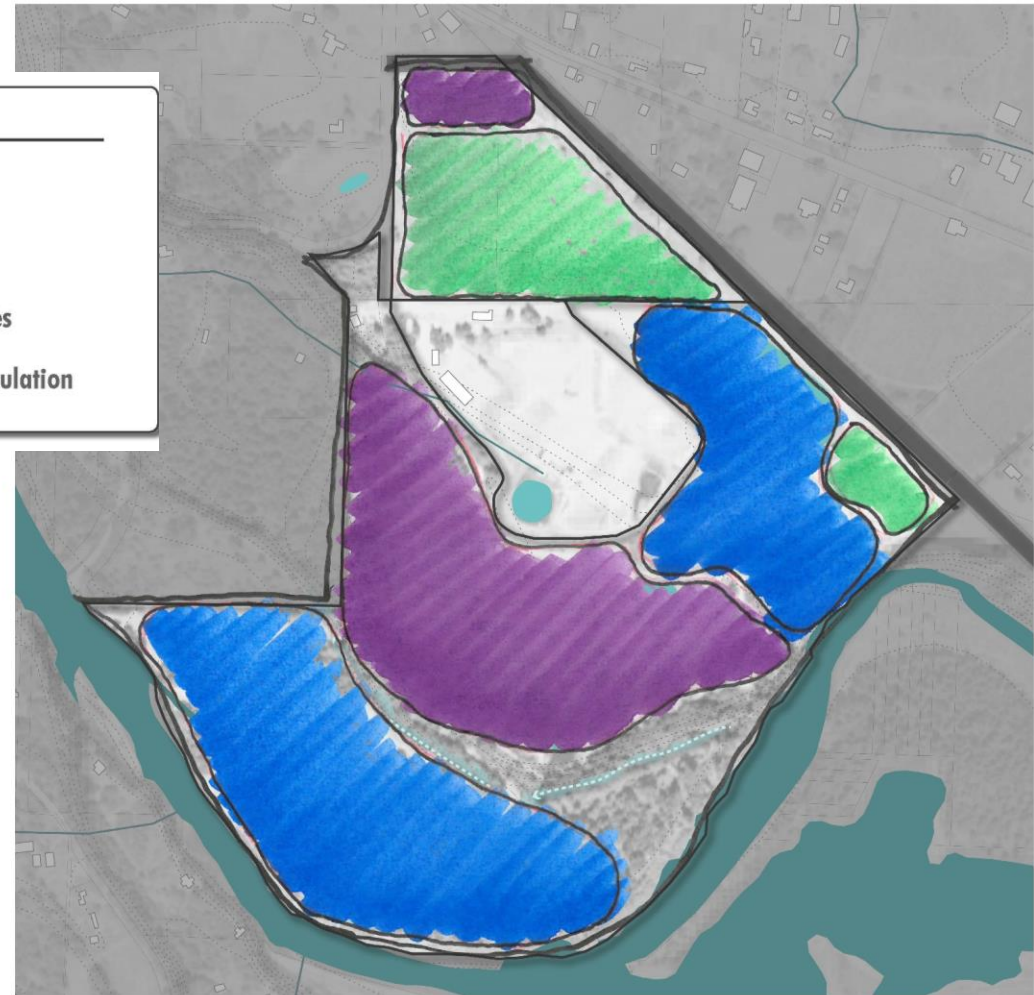
LEGEND

- Camping
- Day Use
- Trail Amenities
- Proposed Circulation



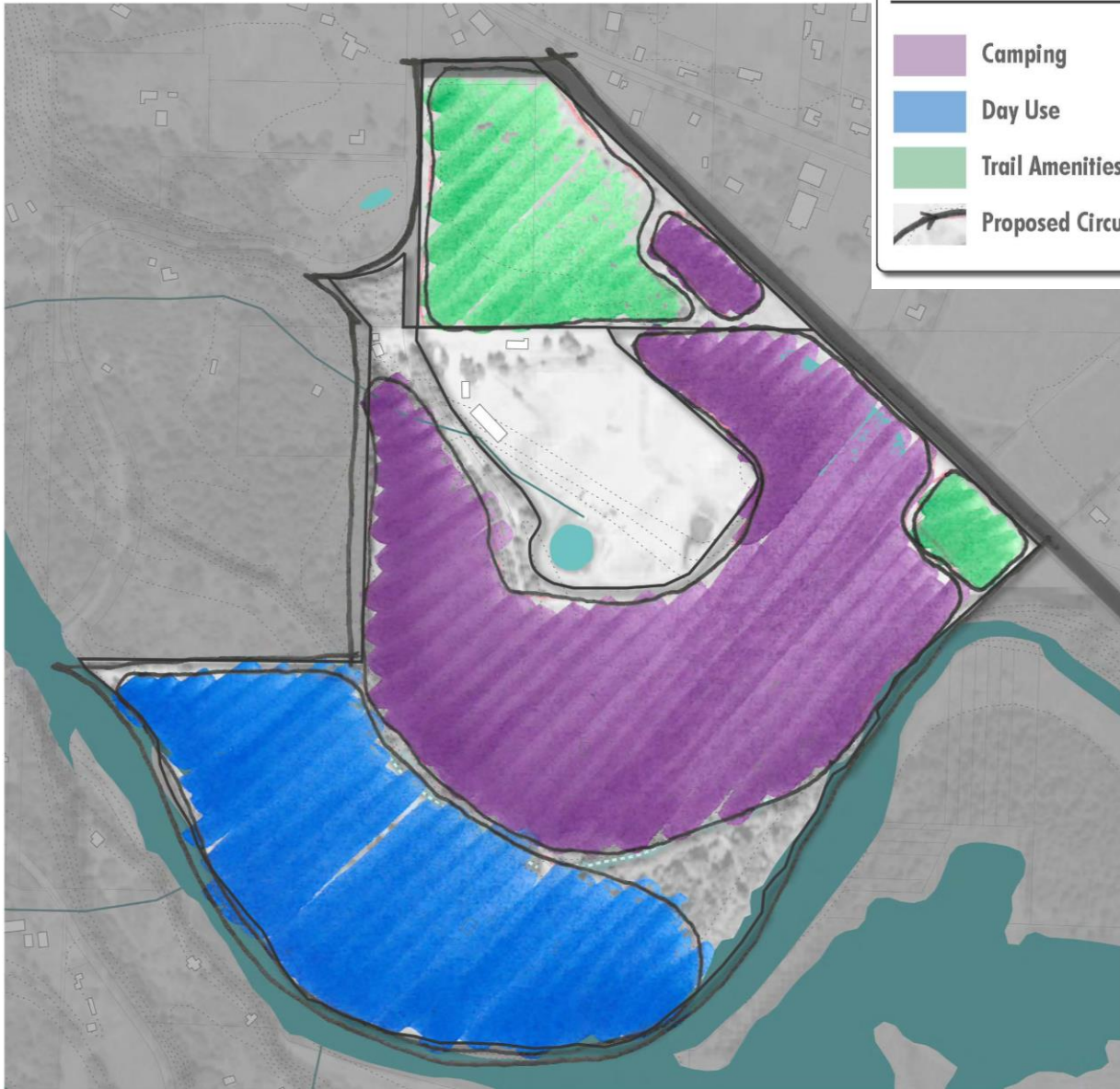
Transportation

- Improve Bakers Ferry – Barton Rd. Intersection
- Reduce decision points with roundabout
- Exit only from day use north of DTD
- Adjust lower road at Area 1 and Area 2 Parking



Transportation

- Improve Bakers Ferry – Barton Rd. Intersection
- Reduce decision points with roundabout
- Adjust lower road at Area 1 and Area 2 Parking



LEGEND

- Camping
- Day Use
- Trail Amenities
- Proposed Circulation

Overlook Property

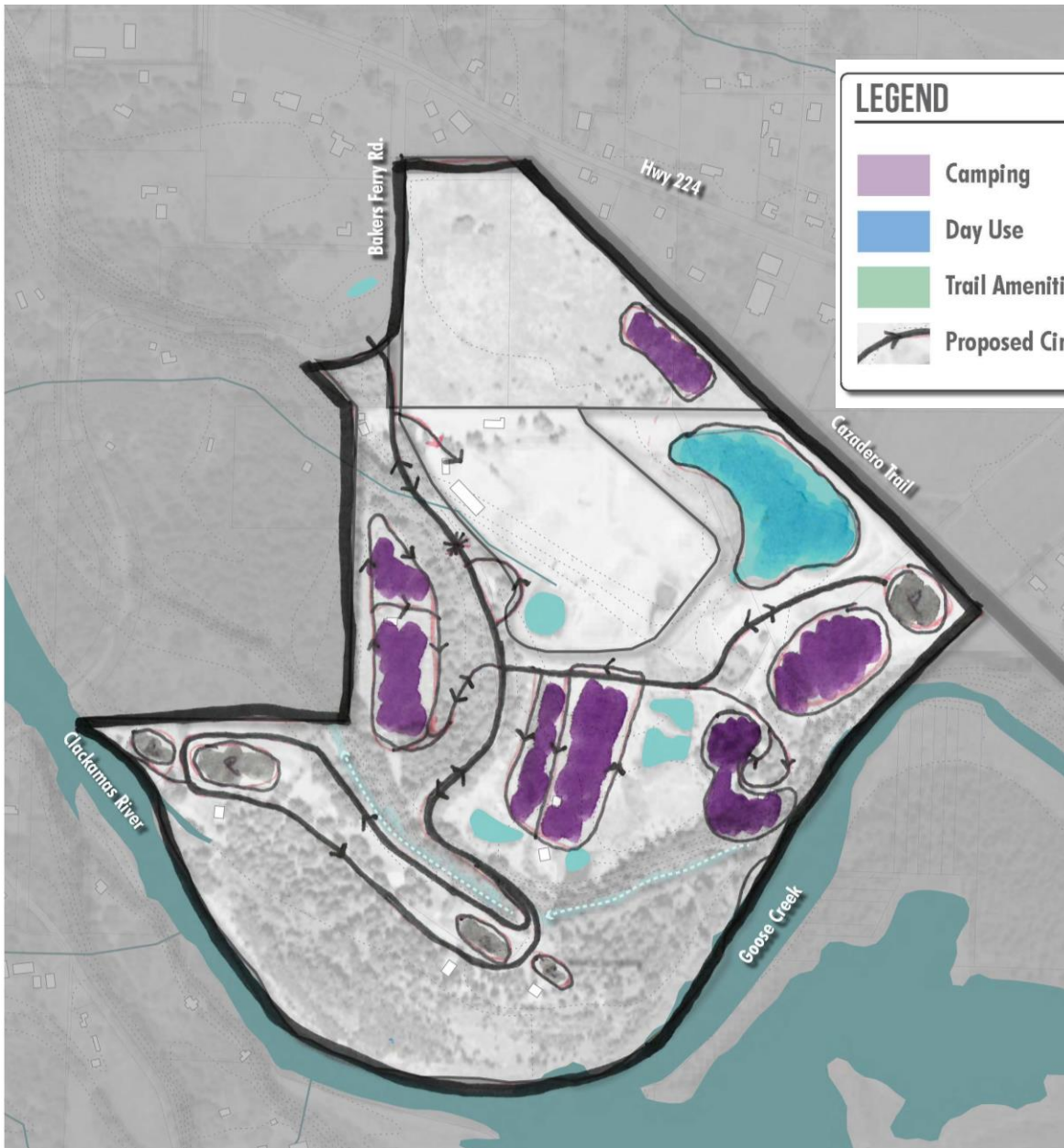
- Increased group camping
- Add cabins and yurts
- Connect to East Campground for shared amenities
- Connect to Quarry Site for shared amenities

Quarry Site

- Increase camping capacity
- Increase pond size for camping amenity
- Trailhead for Cazadero Trail

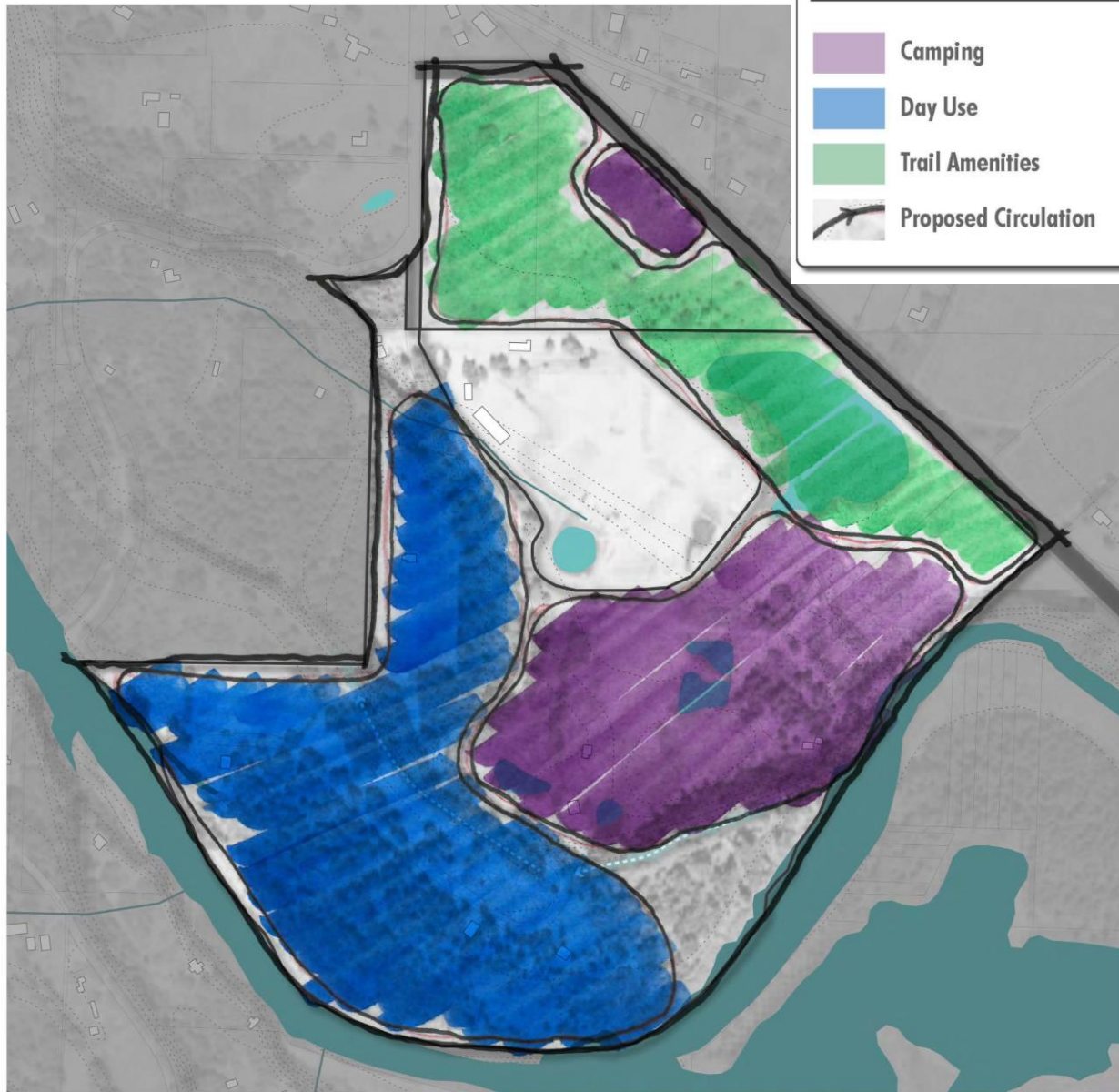
Cazadero Natural Area

- Hiker/Biker camp close to Quarry Site
- Contiguous restoration



Transportation

- Improve Bakers Ferry – Barton Rd. Intersection
- Increases Dump size for turning
- Access to Overlook and Quarry from East Camp Road
- One-way loop in lower day use area



LEGEND

- Camping
- Day Use
- Trail Amenities
- Proposed Circulation

Day Use

- Convert West Campground to Day Use, Shuttle Parking
- Provide trail connections down to the river

Overlook Property

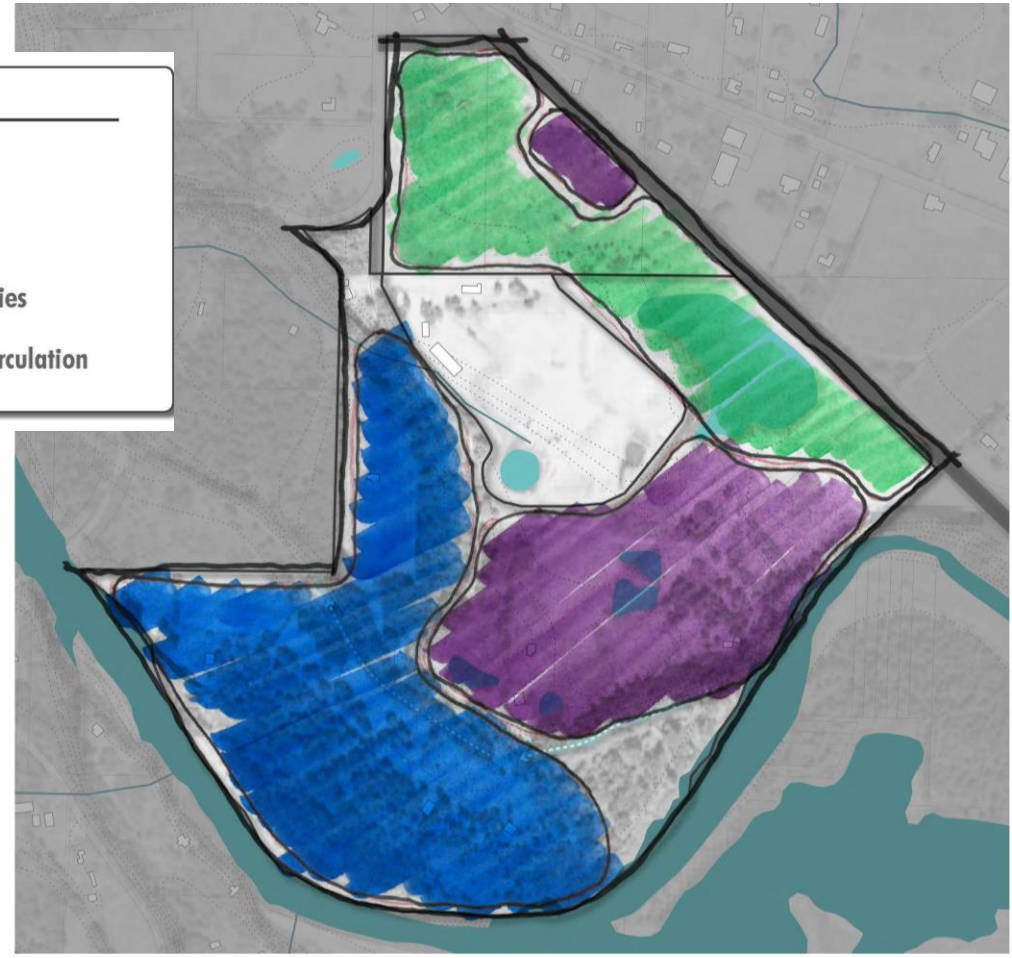
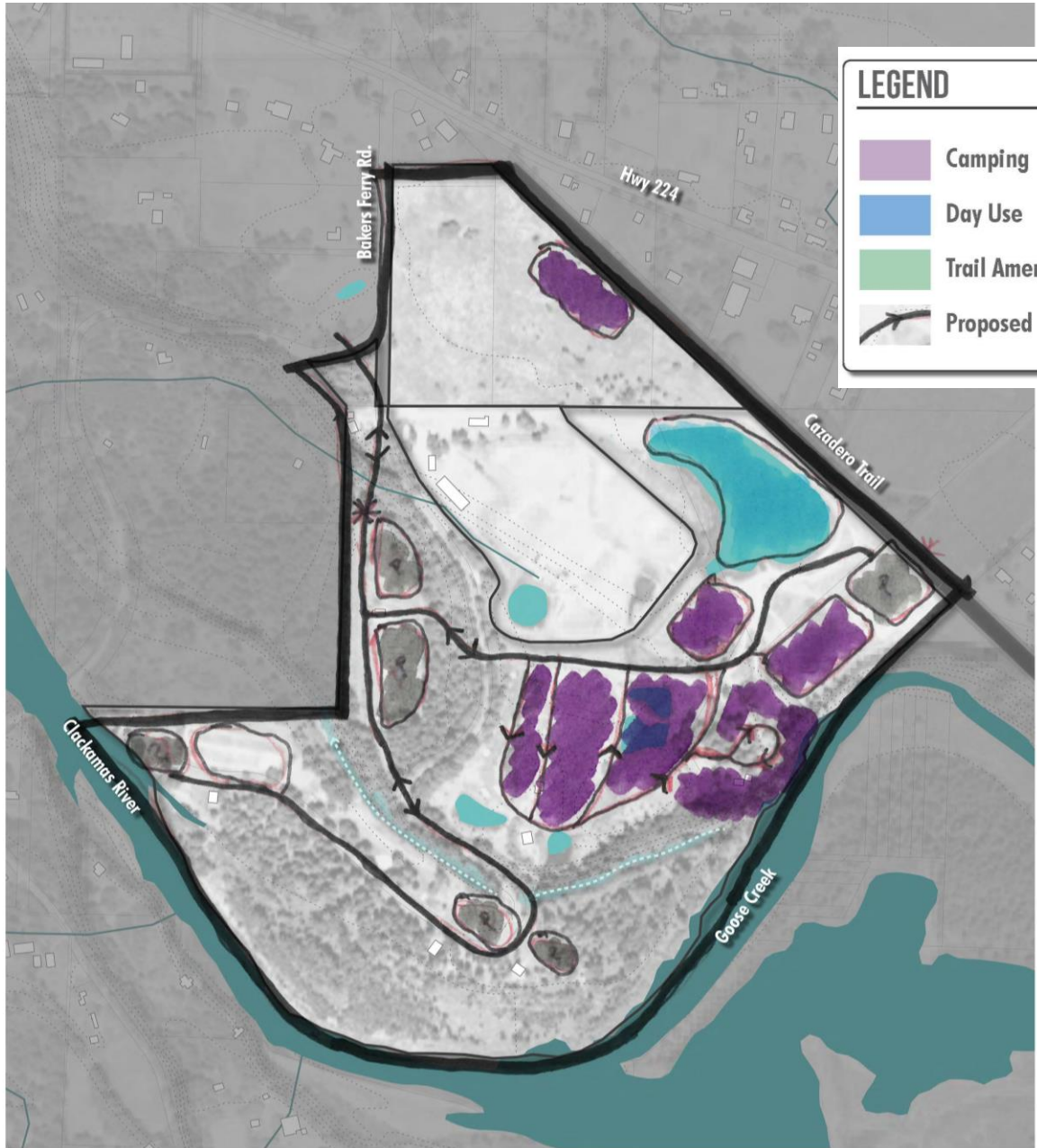
- Increased group camping
- Add cabins and yurts
- Access quarry site amenities

Quarry Site

- Connect environmental corridor from Goose Creek to Cazadero Site
- Trailhead for Cazadero Trail
- Provide camping south of pond connected to Overlook Property

Cazadero Natural Area

- Hiker/Biker camp centered along trail
- Contiguous restoration



Transportation

- Improve Bakers Ferry – Barton Rd. Intersection
- Move Barton Rd. to west side of park
- Road no longer bisects camping