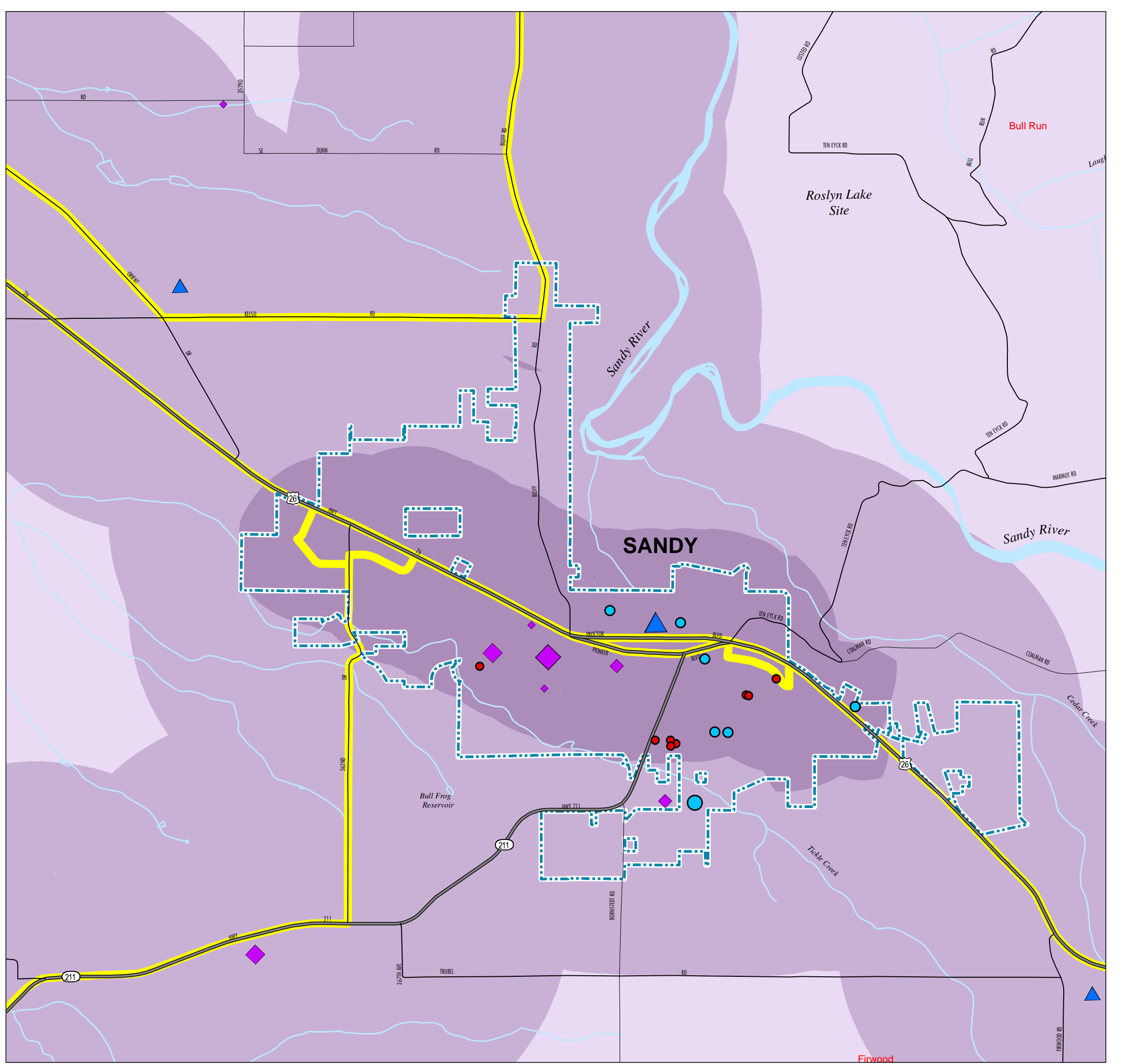
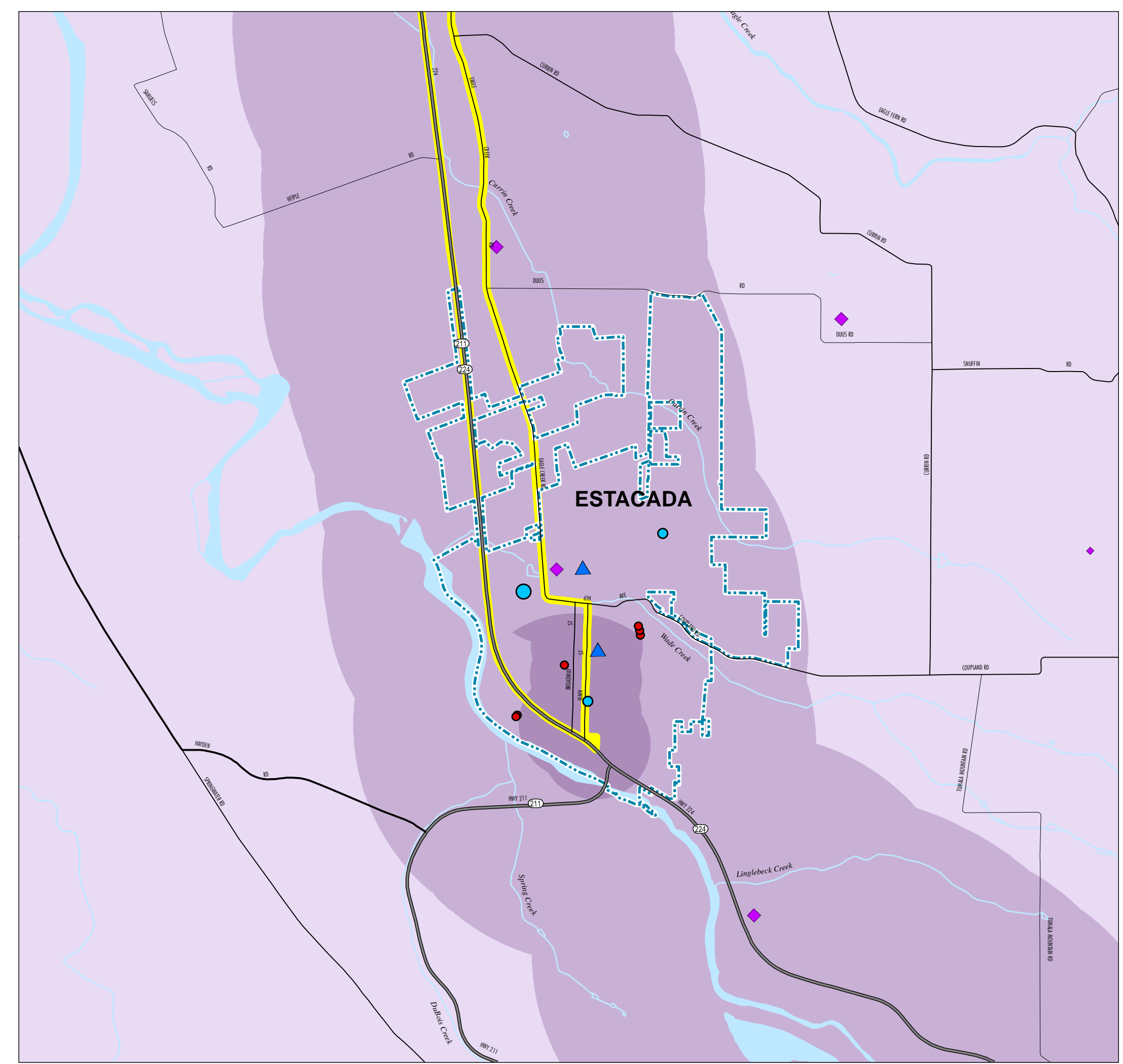
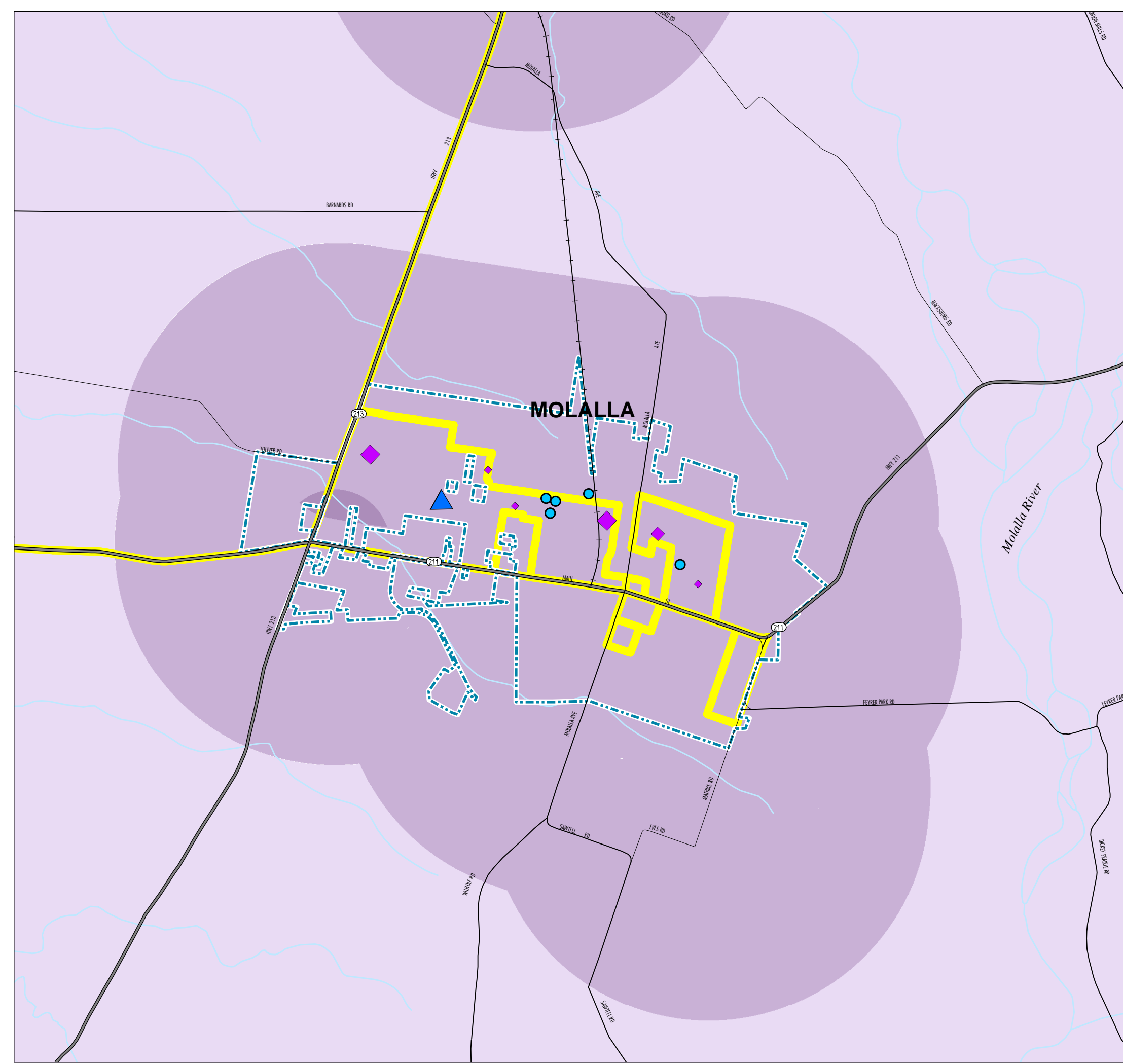
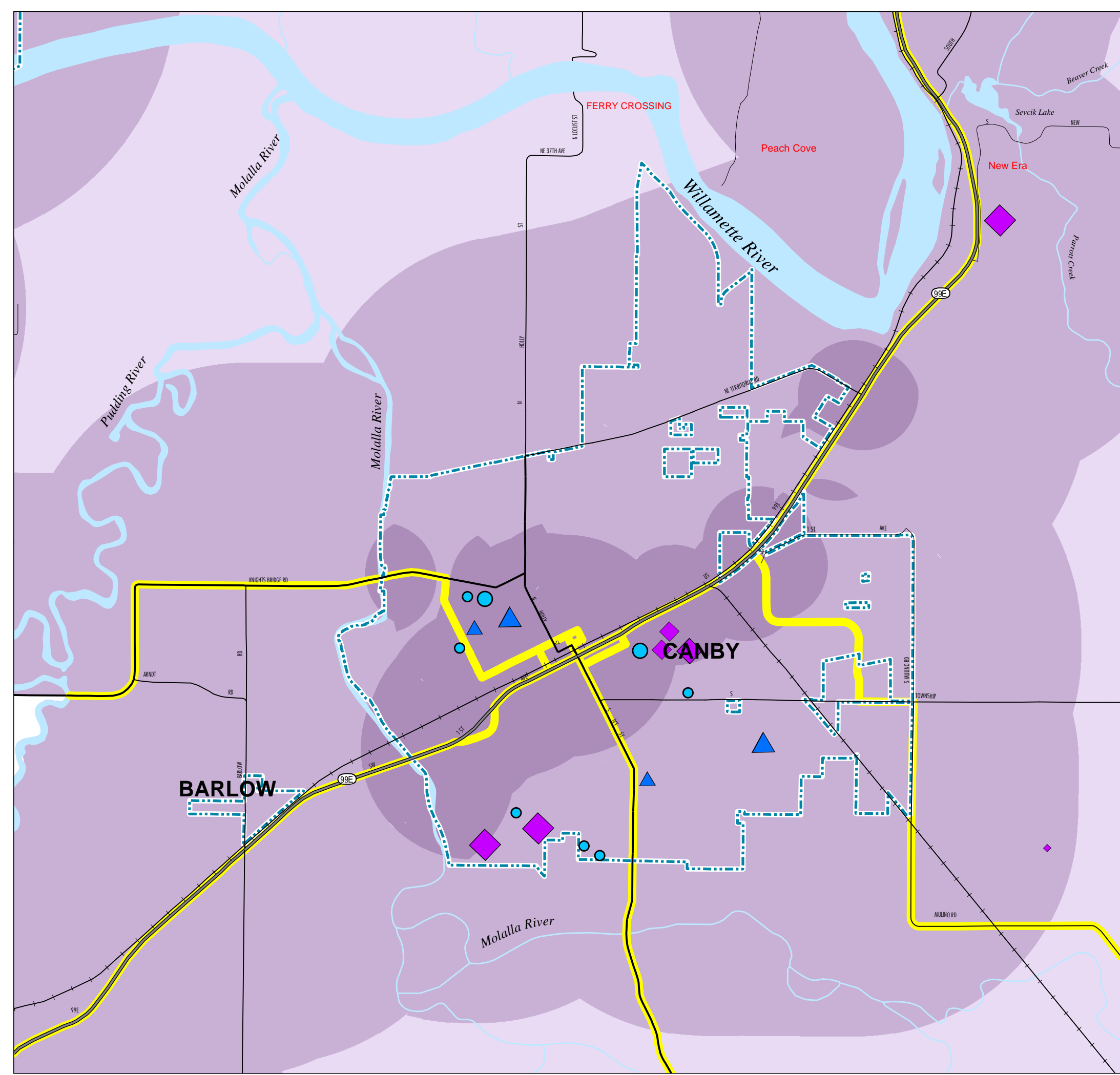
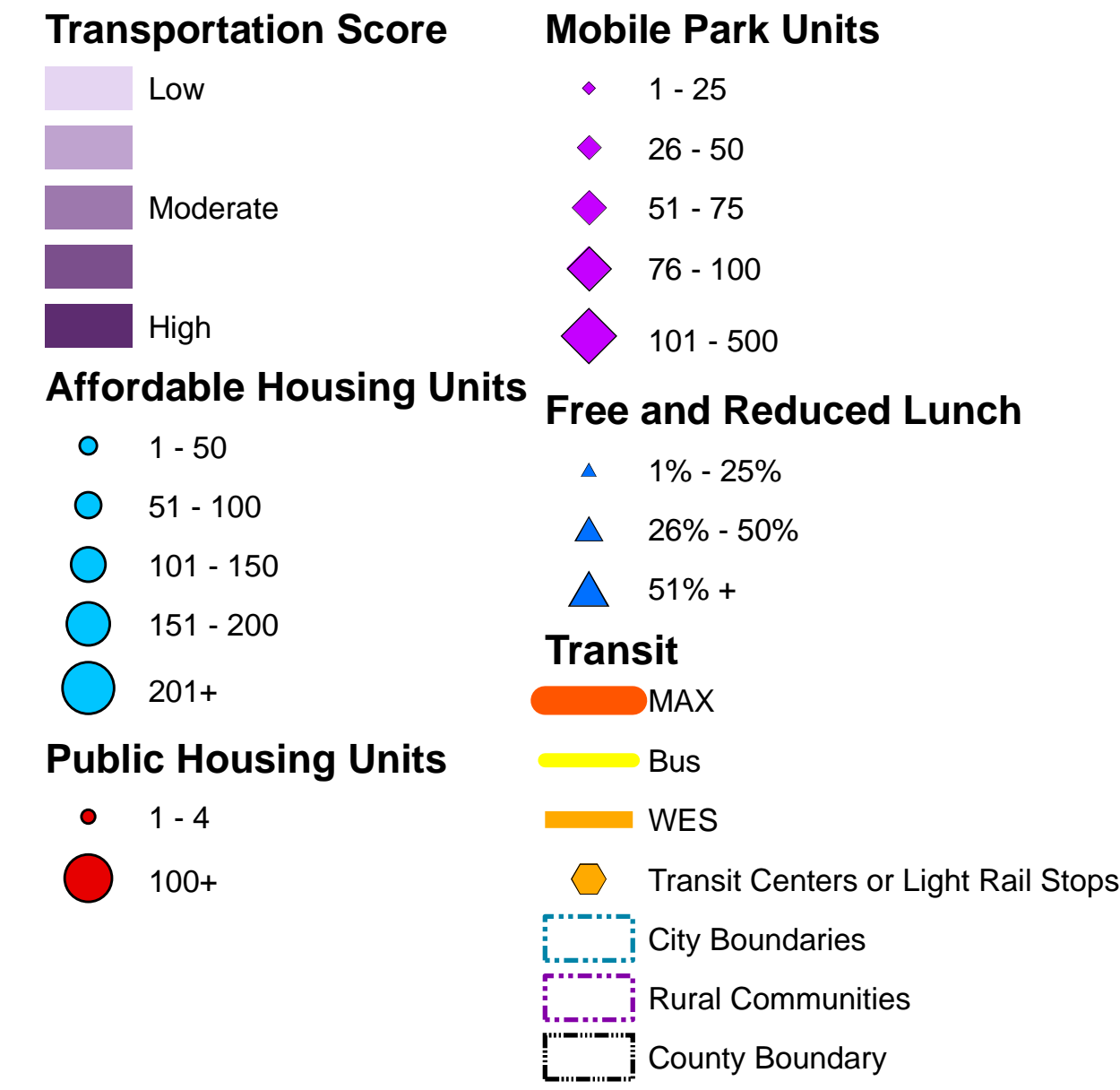
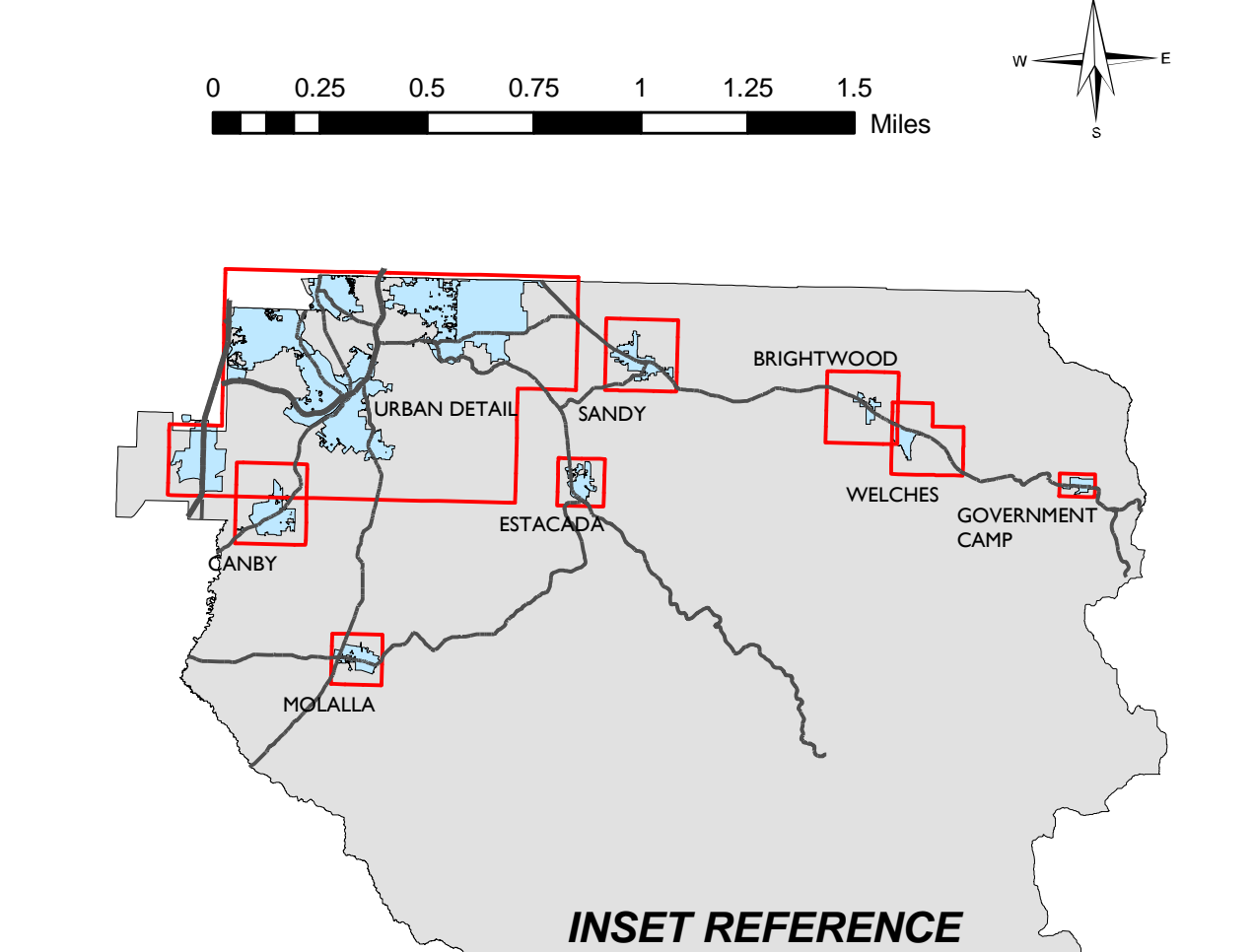
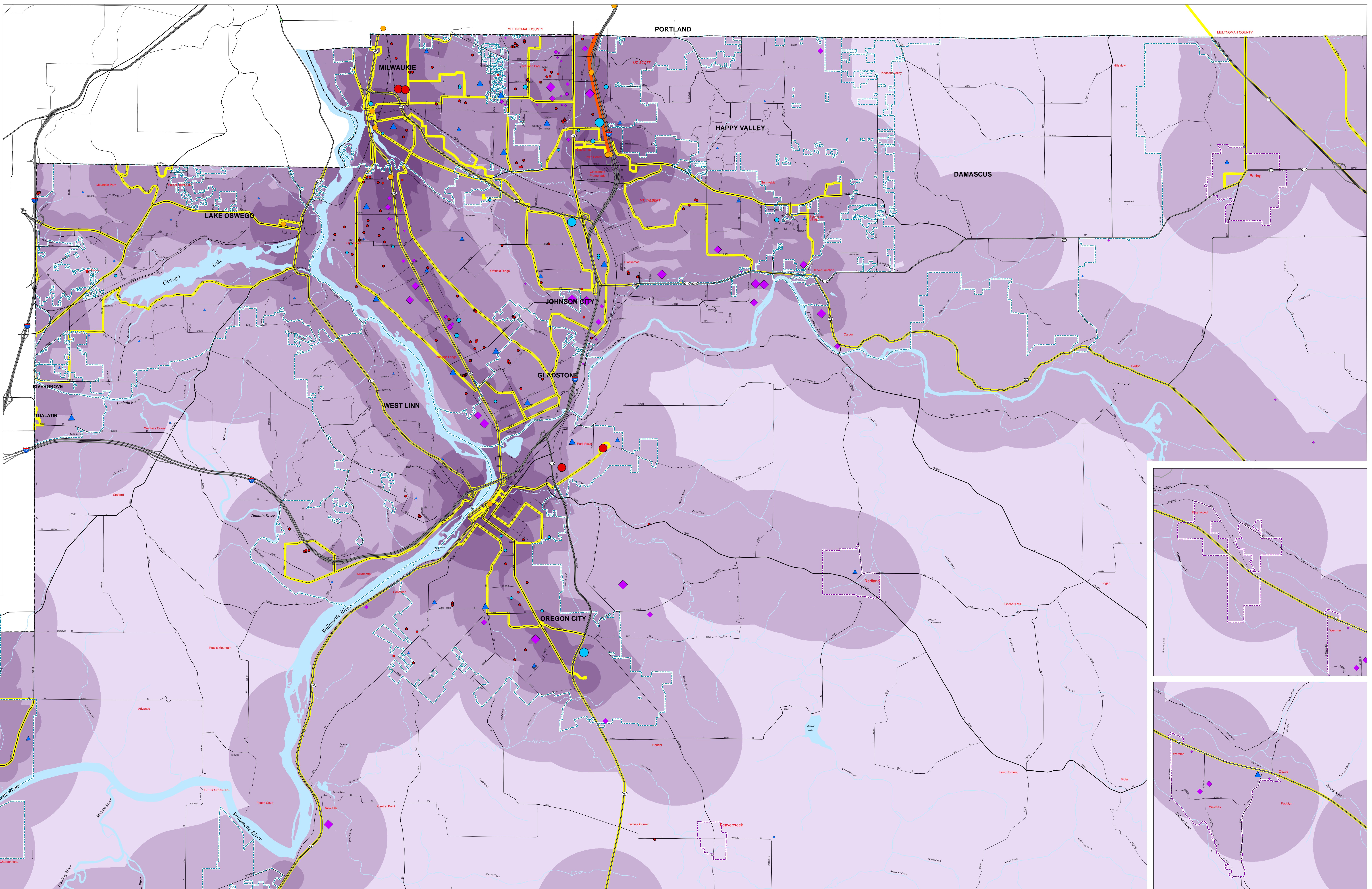


TRANSPORTATION OPPORTUNITY MAP CLACKAMAS COUNTY



Clackamas County Opportunity Scores - Methodology

Category	Weight	Indicator
Education 1/5	33%	Average ODE Report Card Score (Elementary, Middle, High)
	33%	Outstanding - 3 points; Satisfactory - 2 points; In Need of Improvement - 1 point
	33%	Proximity to Elementary & Secondary Schools 1/2 mile - 3 points; 3/4 mile - 2 points; 1 mile - 1 point
Economic	66%	Density (by number & size of firms) of higher-wage industries in 1-mile radius Includes all sectors (excluding 100+ "Young Worker" - 1500 or above)
	33%	Density (by number & size of firms) of lower-wage industries in 1-mile radius Retail, wholesaler/wholesale trade, and accommodation/food services
	33%	Proximity to Health Care Providers 1/2 mile - 3 points; 3/4 mile - 2 points; 1 mile - 1 point
Health Care 1/5	100%	Proximity to Health Care Providers Primary Care Clinics accepting Oregon Health Plan (OHP) -> 4 Offices of Physicians (Including Mental Health) accepting OHP -> 2 General Medical and Surgical Hospitals -> 1 Other Health Providers -> 1
	100%	Proximity to Transit Light Rail Stops and Transit Centers -> 4 High Service Bus Stops (over 20 buses/day) -> 3 Medium Service Bus Stops (15 - 20 buses/day) -> 2 Low Service Bus Stops (5 or less buses/day) -> 1 Bike Lanes -> 1
	100%	Proximity to Parks 1/2 mile - 3 points; 3/4 mile - 2 points; 1 mile - 1 point
Community 1/5	33%	Proximity to Food Sources (except convenience stores) 1/2 mile - 3 points; 3/4 mile - 2 points; 1 mile - 1 point
	33%	Proximity to Other Community Resources Includes Grocery Stores, Supermarkets, Farmer's Markets Child Care Services and other Child and Youth Services Commercial Banking, Credit Unions and Saving Institutions Community Food Services and Emergency and Other Relief Services Employment Placement Agencies and Temporary Help Services Libraries and Archives Other Individual and Family Services and Services for Elderly/Disabled Pharmacies and Drug Stores Religious Organizations
	33%	Proximity to Public Housing 1/2 mile - 3 points; 3/4 mile - 2 points; 1 mile - 1 point



CLACKAMAS
GEOGRAPHIC INFORMATION SYSTEMS
DEPARTMENT OF INFORMATION SERVICES/GEOSPATIAL INFORMATION SYSTEMS
101 LIBRARY COURT
OREGON CITY, OREGON 97133

MAP CREATED OCTOBER 2011

