

Oak Lodge Public Meeting: Library and Community Spaces



Rex Putnam School
January 29, 2018 6:00-7:30 p.m.



Oak Lodge and Gladstone Libraries



Planning and engaging the Oak Lodge and Gladstone communities to build new and improved libraries

Library Agreement: Key Points

Agreement between Clackamas County and City of Gladstone resulted in a joint plan to provide:

- **Two new libraries for approximately 50,000 county residents:**
 - Downtown Gladstone (on City-owned land) ~ 6,000 sq. ft.
 - Oak Lodge area **estimated** ~ 19,500 sq. ft.
- **Gladstone Library:**
 - Will be managed by Clackamas County. (Two buildings, one library. Modeled after Sandy's two-branch system.)
 - Library staff become county employees.



Robust Public Engagement

Both Clackamas County and Gladstone are participating in a robust public feedback campaign.

- Feedback will be incorporated into many library plan details, including location, size, services and amenities.
- Public engagement will specifically include key groups, stakeholders, library users, and the general public.

Where will the Oak Lodge Library be located?

- The library will be located within the Oak Lodge service area; **all options** within that area **are on the table**.
- We are **gathering public input** on location and access needs.
- The **community will be involved in selecting the library location**.

How much will it cost to build the Oak Lodge Library?

- Construction costs **depend on the library location and design that the public wants.**
- At a conceptual level, a 19,500-square-foot building could be built for an estimated **\$5.9 million.**
- Actual cost could be very different, and **cannot be known until we are further along** in planning.

A library is more than a place to house books...



A place where kids can develop a love of reading



Community space for programs and enrichment

A library is more than a place to house books...



A place to create and design



A place to meet



A place for other languages



A place to research



What's your
library vision?

Give us your ideas and help
shape Oak Lodge Library!



NCPRD and North Clackamas School District Strategic Partnership

A partnership that brings new amenities and community spaces to residents in the North Clackamas Parks and Recreation District and North Clackamas School District areas.

NCPRD and North Clackamas School District Strategic Partnership

Details of proposed agreement:

- School District purchases Hood View Park from NCPRD for \$18.7M
- Parks District receives:
 - Concord Elementary School (\$1.59M value)
 - Wichita Elementary School (\$1.37M value)
 - Clackamas Elementary School (\$1.7M value) and
 - Approximately \$14M cash



NCPRD and North Clackamas School District Strategic Partnership

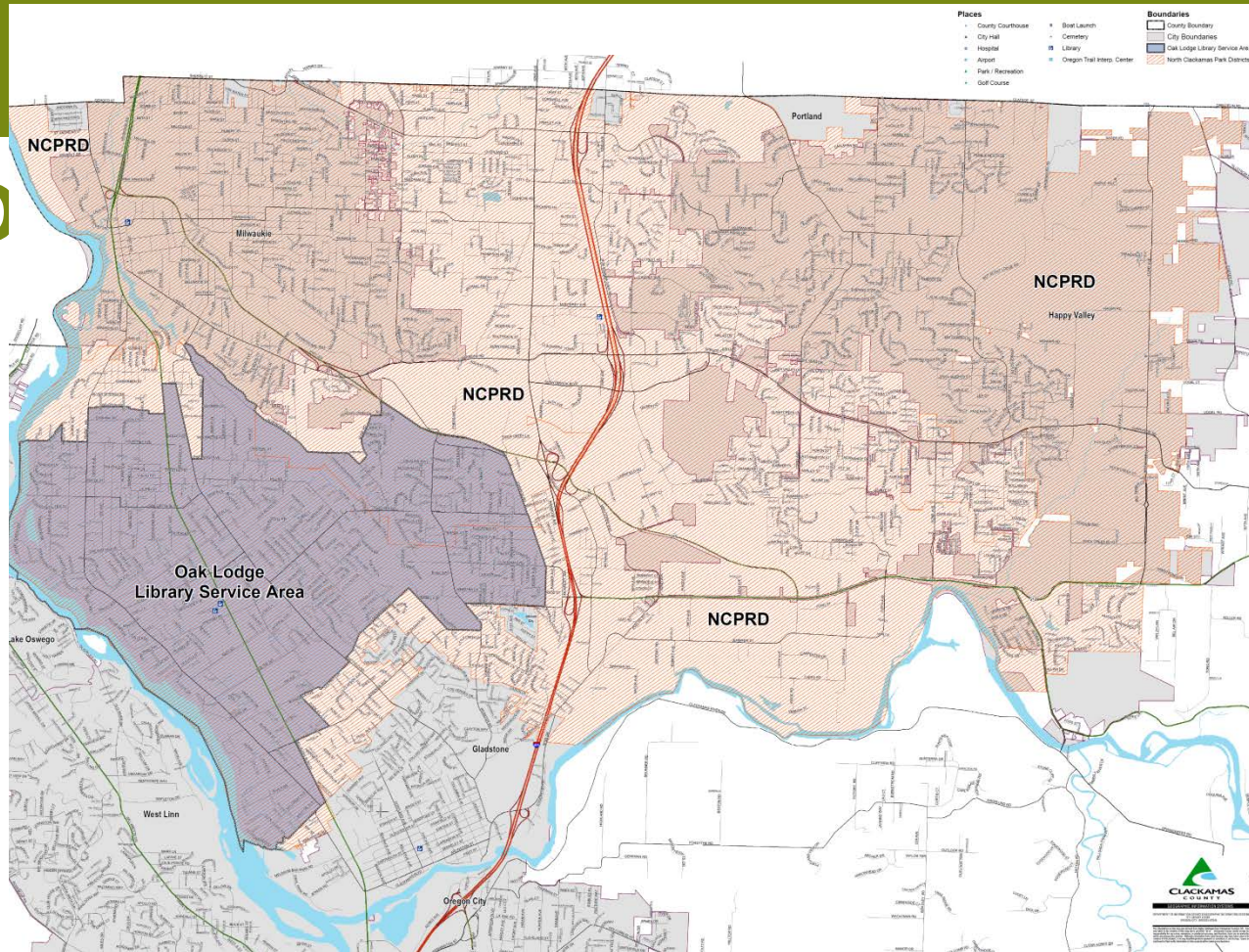
Benefits of the partnership:

- Provides School District with needed **sports fields** for the planned development of a new high school
- **Hood View Park** stays in the community to provide athletic fields and venue for sports programming
- Frees up capital to allow for **more investment in underserved areas** throughout the NCPRD area
- Opportunity for **Concord Elementary School, Wichita Elementary School and Clackamas Elementary School** to be revitalized and repurposed for public uses



NCPRD and North Clackamas School District

NCPRD



120,000 residents make up the NCPRD Service District.

NCPRD and North Clackamas School District Strategic Partnership

Community Engagement:

- NCPRD and NCSD are dedicated to a thorough, inclusive and transparent **public engagement process** for the development of new parks and facilities.
- **Look for future opportunities to provide input** on what you'd like to see happen with these new community spaces:

ncprd.com/partnership



N CPRD and North Clackamas School District Strategic Partnership

About the Concord Elementary School property:

- Closing date for the property is expected for **mid-March 2018**.
- Public involvement on future use of the Concord property will include **outreach to the 120,000 residents that make up the N CPRD service district**.



Concord Community Stakeholders

The Concord Community Stakeholders (CCS) is an assemblage of local community groups who are joining forces to envision a brighter future at the Concord property. **The 16 activated groups that make up the CCS include:**

1. The Concord Partnership (TCP)
2. Friends of Concord
3. Friends of Oak Lodge Public Library (FOLPL)
4. Jennings Lodge CPO (JLCPO)
5. McLoughlin Area Plan Implementation Team (MAP-IT)
6. Milwaukie Center and Friends of Milwaukie Center
7. Neighborhood Livability Project
8. North Clackamas Parks and Recreation District / District Advisory Board
9. Oak Grove Community Council (OGCC)
10. Oak Lodge Community Library Advocates (OLCLA)
11. Historic Downtown Oak Grove (HDOG)
12. Oak Lodge History Detectives (OLHD)
13. Oak Lodge Legacy (OLL)
14. Oak Lodge Library Board of Trustees
15. Restore Oregon
16. Urban Green

Pick up the CCS handouts to learn more and get involved.