

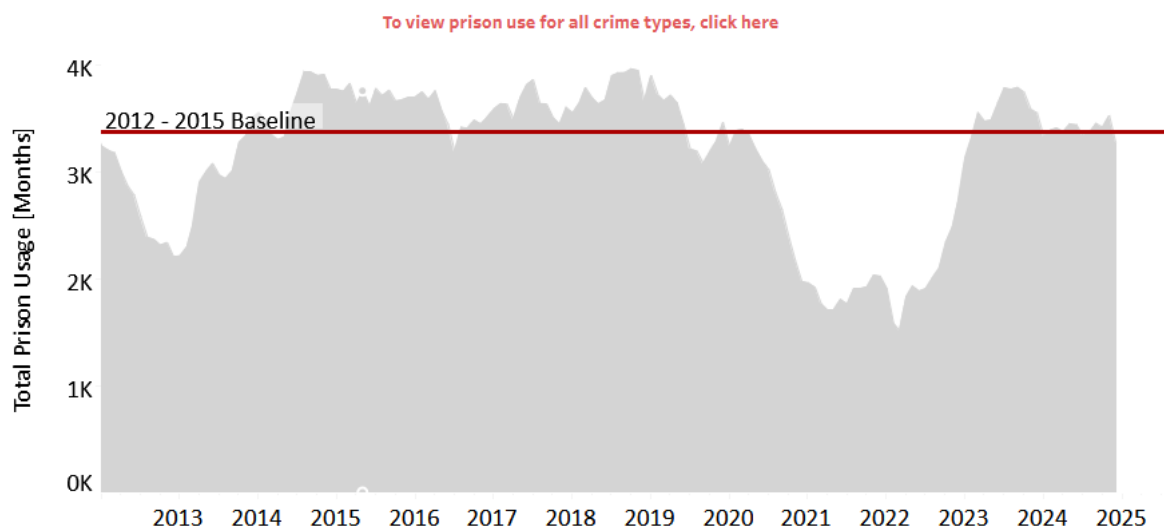
## Consultation of Data Dashboards

### 1. Prison Use Dashboard – Prison Use Dashboard

**Has your county's prison usage increased over the past 12 months or exceeded your historic baseline? If yes, please identify local factors contributing to this trend.**

#### How is prison use for JRP-eligible crimes changing over time?

A primary goal of the JRP program is to reduce Oregon's prison population and avoid the costs associated with building and staffing new prison facilities. Each county contributes to this goal by seeking to reduce their prison usage for JRP (nonviolent) crimes through targeted interventions as shown on the **JRP County Programs** page.



**Chart: Total Prison Usage**

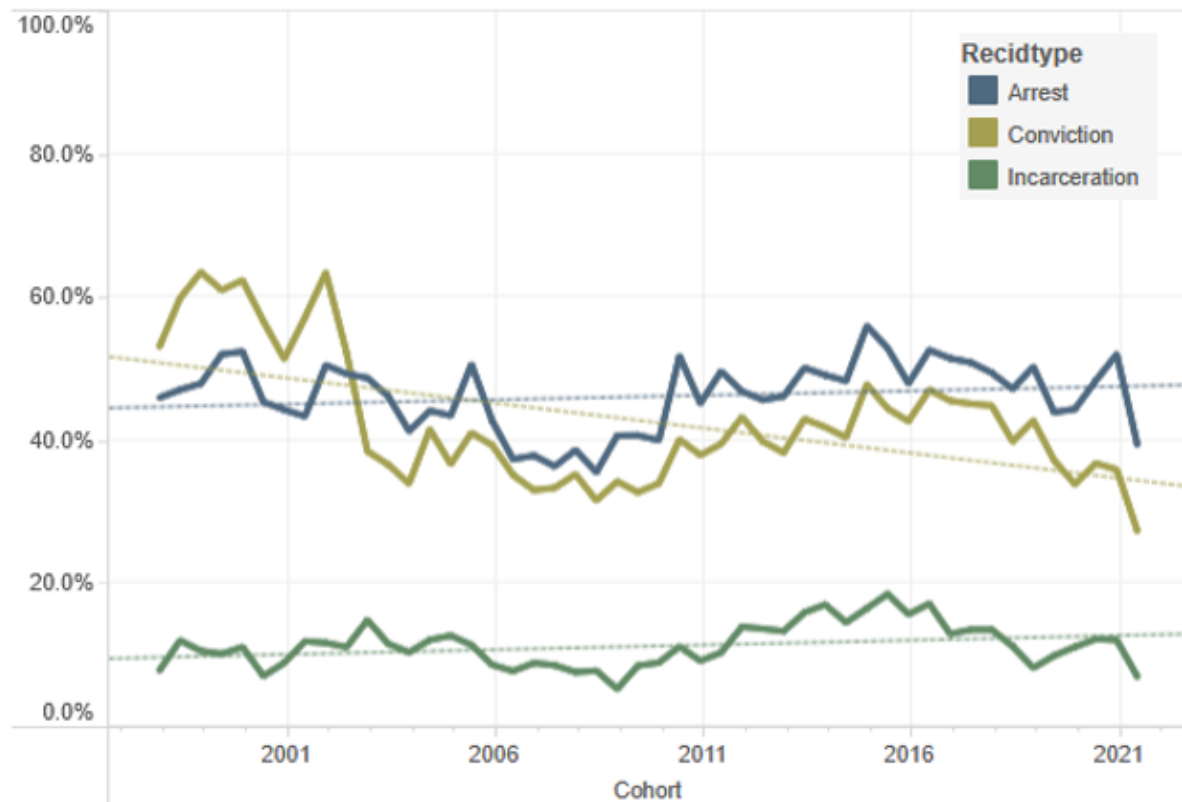
CJC measures prison use primarily in terms of total months of incarceration or length of stay (LOS). The chart above shows a one year rolling sum of LOS over time. The data is limited to the last full month reported by the Department of Corrections. The 2012 - 2015 Baseline represents the average prison usage for the three years prior to the implementation of the JRI program and is provided for comparison.

In the past year, Clackamas County has seen a decline in prison usage and intake rates, returning to baseline levels from 2012-2015 after a post-pandemic surge. While arrests rose for individuals completing supervision in the second half of 2020, the arrest rate for those finishing in the first half of 2021 fell below baseline. Conviction and incarceration rates have remained at or below baseline levels, and recidivism is lower than in the 2013 cohort. Over the past 12 months, efforts to improve communication and information sharing between CCSO and the DA's Office regarding JRP cases have been successful. Cases are now screened pre-adjudication, and individuals are further evaluated in the Jail Program before recommendations are made to the Court at sentencing. This collaboration has led to more informed decision-making on JRP-eligible cases.

## 2. Recidivism Dashboard – Recidivism Dashboard

**Has three-year incarceration recidivism increased in your county in the latest data year or since 2013? If yes, please explain local factors contributing to this trend.**

Clackamas County



Three-year recidivism metrics in Clackamas County have improved, with rates declining after a post-pandemic surge and returning to baseline levels from 2012-2015. While arrests rose for individuals completing supervision in the second half of 2020, those completing supervision in the first half of 2021 saw reduced arrest rates, falling below baseline. Conviction and incarceration rates have remained at or below baseline levels, with recidivism measures lower than in the 2013 cohort. Parole and probation officers use risk assessments to guide decision-making and refer clients to treatment programs like the Clackamas Substance Abuse Program (CSAP). These programs are critical in promoting behavior change and reducing recidivism. Targeted interventions, such as CSAP, help individuals engage in rehabilitation, fostering positive long-term outcomes and reducing repeat offenses, even amid post-pandemic challenges.

### 3. Racial Disparity Tool – Racial Disparity Tool (Sentencing)

How does your Justice Reinvestment-funded programming address racial disparities or other disparities in historically underserved communities?

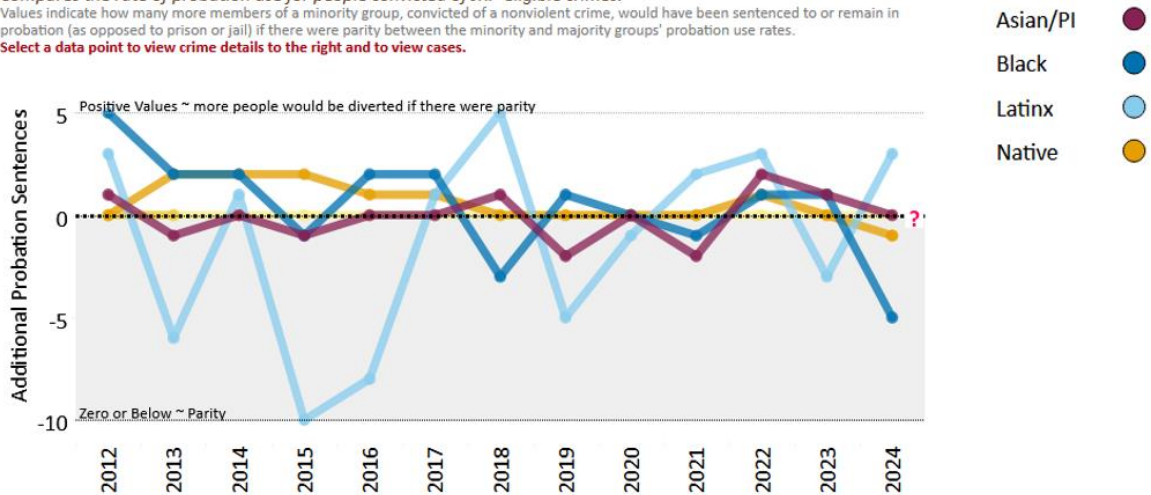
#### Men's Racial Disparity Tool

##### Probation Racial Disparity Tool

*Compares the rate of probation use for people convicted of JRP-eligible crimes.*

Values indicate how many more members of a minority group, convicted of a nonviolent crime, would have been sentenced to or remain in probation (as opposed to prison or jail) if there were parity between the minority and majority groups' probation use rates.

Select a data point to view crime details to the right and to view cases.



#### Women's Racial Disparity Tool

##### Probation Racial Disparity Tool

*Compares the rate of probation use for people convicted of JRP-eligible crimes.*

Values indicate how many more members of a minority group, convicted of a nonviolent crime, would have been sentenced to or remain in probation (as opposed to prison or jail) if there were parity between the minority and majority groups' probation use rates.

Select a data point to view crime details to the right and to view cases.



Local data shows that in 2023, there was a significant drop in disparate sentencing for Latinx men in Clackamas County, but the rate rose again in 2024, with JRP-eligible convictions increasing from 32 in 2023 to 47 in 2024. Sentencing for men in other racial minority groups was on par with white men in 2024, and women from all racial minority groups received sentencing on par with white women.

Clackamas County Justice Reinvestment Programs offers responsive services at multiple levels. Our STTL residential program expands eligibility to individuals without a private residence and creates individualized transition plans from incarceration to the community. PPOs are completing equity and bias training to improve risk/need assessments and culturally responsive case plans. Our Jail Program engages individuals while in custody to address concerns and build better transition plans and pathways to treatment. CSAP fosters inclusion, connecting participants to culturally relevant resources and driving engagement.

## Proposed Grant Program One

Program Name

Clackamas Substance Abuse Program (CSAP)

Was this program a part your county's Justice Reinvestment-funded programming in 2023-2025?

Yes

What type of program is this?

Drug and Alcohol Treatment

Provide a summary of the program's purpose and key activities.

Example: "The Mental Health Diversion Program diverts individuals with mental health disorders away from incarceration and into treatment. Participants receive comprehensive case management, psychiatric care, and wraparound support. The program's goal is to reduce recidivism and address untreated mental health conditions contributing to criminal behavior."

The Clackamas Substance Abuse Program (CSAP) is a high-dosage residential program designed for justice-involved individuals at higher risk of reoffending and

returning to substance use. CSAP provides personalized treatment based on criminogenic risks, needs, and responsivity.

CSAP prioritizes services for individuals at the highest risk of absconding, engaging in new criminal activity, or having their supervision revoked. Without intervention, these individuals face an increased risk of reincarceration. The program aims to help clients stay out of jail or prison by providing tools for success, including accountability, treatment, and community support.

Through cognitive-behavioral programming, therapy, and skill building, CSAP reduces recidivism and helps clients regain control of their lives, fostering successful reintegration into society. By addressing both substance use and criminogenic needs, the program creates a foundation for long-term success and stability. Ultimately, CSAP supports individuals in the justice system, helping them overcome barriers to rehabilitation and reducing the likelihood of reoffending.

Which of the goals of the Justice Reinvestment Grant Program does this program meet?

Responses Selected:

Reduce prison usage while protecting public safety and holding individuals accountable

Reduce recidivism while protecting public safety and holding individuals accountable

If it reduces prison usage, briefly describe how below.

Example: "Reduce prison usage by diverting eligible individuals into mental health treatment, the program prevents incarceration for non-violent offenses and reduces reliance on prison beds."

The Clackamas Substance Abuse Program (CSAP) is a high-dosage residential program that supports justice involved individuals and reduces prison usage by providing a safe and more effective alternative to prison for eligible individuals. CSAP provides a structured environment that promotes long-term recovery within the community. This steady dose of interventions and therapy helps individuals avoid reoffending, reducing our reliance on prison and fostering safer communities.

If it reduces recidivism, briefly describe how below.

Example: "The program provides evidence-based mental health treatment and continuous support, reducing the likelihood of reoffending by addressing the root causes of participants' behavior."

The program provides evidence-based services to address the drivers of criminal behavior while meeting individual needs. Validated assessments guide case decisions, and treatment plans are tailored to each participant's needs and stage of change. Cognitive-behavioral interventions are offered to medium- and high-risk participants to

reduce criminal thinking and behavior. This structured approach ensures clients receive targeted support to interrupt cycles of reoffending, build healthier coping strategies, and foster long-term rehabilitation, ultimately reducing the likelihood of reincarceration.

## Target Population

Identify the target population(s) this program serves, including underserved groups as defined in HB 3064 (2019) (e.g., racial and ethnic minorities, women, LGBTQIA+ individuals).

### Gender Identity

**Responses Selected:**

Men

Women

Non-binary

Race/Ethnicity *(If it is a general eligibility program, select "all")*

**Responses Selected:**

All

### Other Historically Underserved Communities

**Responses Selected:**

LGBTQIA+

### Risk Level

**Responses Selected:**

High

Medium

### Which crime types does this program serve?

**Responses Selected:**

Driving Offenses (generally ORS chapters 811, 813)

Property Offenses (generally ORS chapters 164, 165)

Drug Offenses (generally ORS chapters 471, 475)

### Which, if any, assessments do this program use?

**Responses Selected:**

PSC

LS/CMI

WRNA

Briefly describe how the above assessments are used in your program.

Example: "The PSC is used as an initial triaging tool to determine whether or not a candidate for our downward departure program will receive a more detailed assessment (WRNA or LS/CMI) later."

The PSC assessment is used as an initial triage tool to identify clients' risk. Adults on supervision undergo a more comprehensive assessment to determine individualized case plans. Male clients must score 16 or higher (Med/High) on the Level of Service Case Management Inventory (LSCMI), while female clients must score 22 or higher (Med/High) on the Women's Risk Needs Assessment (WRNA). Participants must meet the criteria for American Society of Addiction Medicine (ASAM) level of care, as defined by the ASAM diagnostic criteria, to ensure appropriate treatment.

Has this program received a Corrections Program Checklist or the George Mason University Risk-Need-Responsivity Evaluation in the last 10 years?

Yes

If yes, when was the most recent review conducted?

August 2022

If yes, briefly describe the outcome of the most recent review and any steps taken to address the findings of the assessment.

The CSAP program received an overall score of 74% on the evaluation, which is high enough to avoid requiring a CPC. The program will be reassessed in 2027.

The main priorities recommended by evaluators were:

1. Grouping clients by risk level and offering a higher-dosage program for higher-risk clients.
2. Focusing treatment on one primary target behavior for each client, with secondary services supporting the primary goal.
3. Determining focus through diagnostic criteria or a validated needs assessment.

How does your program meet the legal definition of culturally responsive services as defined in SB 1510 (2022)?

("Culturally responsive service" means a service that is respectful of, and relevant to, the beliefs, practices, cultures and linguistic needs of diverse consumer or client populations and communities whose members identify as having particular cultural or linguistic



affiliations by virtue of their place of birth, ancestry or ethnic origin, religion, preferred language or language spoken at home. A culturally responsive service has the capacity to respond to the issues of diverse communities and require knowledge and capacity at systemic, organizational, professional and individual levels of intervention.)

Provide specific examples of how your program addresses the cultural or linguistic needs of historically underserved communities. Include how staff are trained, services are tailored, and systemic or organizational efforts are made to ensure responsiveness.

Example: “Our program partners with culturally specific organizations to deliver trauma-informed peer mentorship for Indigenous participants. Staff receive annual training on culturally responsive practices, and program materials are translated into the primary languages of the populations we serve.”

By connecting clients to culturally relevant resources and incorporating cultural practices into treatment, the CSAP Program ensures services are effective, respectful, and aligned with the cultural values of the communities we serve. Each client undergoes a thorough risk assessment, ASAM, and mental health evaluations to ensure a holistic approach to treatment. Case planning is tailored to individual needs, with treatment plans incorporating culturally competent interventions. Our diverse and culturally competent staff play a vital role in providing personalized care that respects each client’s background. This approach reflects our commitment to culturally responsive care, fostering an environment that improves outcomes and supports successful reintegration into society. By prioritizing cultural competency and individualized care, CSAP works to reduce disparities and promote equitable access to services for all clients.

## Proposed Grant Program Two

Program Name

Clackamas County Jail Program (CCJP)

Was this program a part your county's Justice Reinvestment-funded programming in 2023-2025?

Yes

What type of program is this?

Cognitive-Behavioral Intervention Program

Provide a summary of the program's purpose and key activities.

Example: “The Mental Health Diversion Program diverts individuals with mental health disorders away from incarceration and into treatment. Participants receive comprehensive



case management, psychiatric care, and wraparound support. The program's goal is to reduce recidivism and address untreated mental health conditions contributing to criminal behavior."

CCJP is a cognitive-behavioral intervention program developed for individuals incarcerated at the Clackamas County Jail. The low barrier program is designed to serve Adults In Custody (AIC) while they serve a jail sentence or sanction. Individuals assessed as higher risk to reoffend are prioritized, as determined by offense history and available risk assessment. This program serves as a critical component in preparing individuals for transition into CSAP (Clackamas Substance Abuse Program) and subsequent community supervision. CCJP operates within a community jail dorm setting, focusing on increasing readiness to change, structured skill-building, and cognitive restructuring. The program integrates Medication-Assisted Treatment (MAT) for individuals with substance abuse and utilizes thinking reports in group settings to address thinking patterns that led to incarceration. This structured approach ensures participants are prepared to successfully engage in treatment and supervision, ultimately improving long-term outcomes and reducing recidivism.

Which of the goals of the Justice Reinvestment Grant Program does this program meet?

**Responses Selected:**

Reduce prison usage while protecting public safety and holding individuals accountable

Reduce recidivism while protecting public safety and holding individuals accountable

If it reduces prison usage, briefly describe how below.

Example: "Reduce prison usage by diverting eligible individuals into mental health treatment, the program prevents incarceration for non-violent offenses and reduces reliance on prison beds."

CCJP helps reduce prison usage by creating early assessment and intervention while individuals are incarcerated, culminating in a real-time assessment of progress for participants pending sentencing on prison eligible cases. Using evidence-based practices like Medication-Assisted Treatment (MAT), cognitive restructuring, and skill-building, the program stabilizes individuals in jail, minimizing the need for extended incarceration. CCJP staff attend sentencing for participants and inform the court on treatment and transition plans when cases are eligible for a downward departure sentence. As individuals transition to community programs like CSAP and probation, they continue to receive support, maintain sobriety, and address criminogenic risk factors.

If it reduces recidivism, briefly describe how below.

Example: "The program provides evidence-based mental health treatment and continuous support, reducing the likelihood of reoffending by addressing the root causes of participants' behavior."

CCJP reduces recidivism by addressing readiness for change and increasing motivation to engage in community programming to further address substance abuse and other criminogenic needs. The program provides Medication-Assisted Treatment (MAT), cognitive restructuring, and skill-building to help participants better understand their patterns of behavior and develop healthier coping strategies. Preparing individuals for engagement in community programming, CCJP supports a seamless transition to community-based programs like CSAP and probation, which continues support to reduce the likelihood of recidivism.

## Target Population

Identify the target population(s) this program serves, including underserved groups as defined in HB 3064 (2019) (e.g., racial and ethnic minorities, women, LGBTQIA+ individuals).

### Gender Identity

Responses Selected:

Men

Race/Ethnicity (*If it is a general eligibility program, select "all"*)

Responses Selected:

All

### Other Historically Underserved Communities

Responses Selected:

LGBTQIA+

### Risk Level

Responses Selected:

High

Medium

Which crime types does this program serve?

Responses Selected:

Driving Offenses (generally ORS chapters 811, 813)

Property Offenses (generally ORS chapters 164, 165)

Drug Offenses (generally ORS chapters 471, 475)

Which, if any, assessments do this program use?

**Responses Selected:**

PSC

LS/CMI

WRNA

Briefly describe how the above assessments are used in your program.

Example: "The PSC is used as an initial triaging tool to determine whether or not a candidate for our downward departure program will receive a more detailed assessment (WRNA or LS/CMI) later."

The PSC assessment is used as an initial triage tool to identify clients' risk.

Has this program received a Corrections Program Checklist or the George Mason University Risk-Need-Responsivity Evaluation in the last 10 years?

No

How does your program meet the legal definition of culturally responsive services as defined in SB 1510 (2022)?

("Culturally responsive service" means a service that is respectful of, and relevant to, the beliefs, practices, cultures and linguistic needs of diverse consumer or client populations and communities whose members identify as having particular cultural or linguistic affiliations by virtue of their place of birth, ancestry or ethnic origin, religion, preferred language or language spoken at home. A culturally responsive service has the capacity to respond to the issues of diverse communities and require knowledge and capacity at systemic, organizational, professional and individual levels of intervention.)

Provide specific examples of how your program addresses the cultural or linguistic needs of historically underserved communities. Include how staff are trained, services are tailored, and systemic or organizational efforts are made to ensure responsiveness.

Example: "Our program partners with culturally specific organizations to deliver trauma-informed peer mentorship for Indigenous participants. Staff receive annual training on culturally responsive practices, and program materials are translated into the primary languages of the populations we serve."

CCJP strives to foster an environment in a jail setting where all participants feel respected, understood, and supported by developing group norms and dorm rules that support open communication and inclusion. The dorm itself is organized in a unique manner compared to the rest of jail as it provides a therapeutic environment and comfortable furnishings to incentivize participation and engagement. Counselors and group facilitators complete equity and bias training to better recognize individual barriers

and needs of participants. Program materials are translated as needed and facilitators are trained to adjust their approach in accordance with any recognized cultural issue.

## Proposed Grant Program Three

Program Name

Clackamas Short-Term Transitional Leave

Was this program a part your county's Justice Reinvestment-funded programming in 2023-2025?

Yes

What type of program is this?

Reentry

Provide a summary of the program's purpose and key activities.

Example: "The Mental Health Diversion Program diverts individuals with mental health disorders away from incarceration and into treatment. Participants receive comprehensive case management, psychiatric care, and wraparound support. The program's goal is to reduce recidivism and address untreated mental health conditions contributing to criminal behavior."

The Short-Term Transitional Leave (STTL) program allows individuals to reintegrate into their communities up to 120 days earlier than their original release date from the state prison system. The program's primary goal is to support a successful transition from prison to community life, helping participants maintain a crime-free lifestyle after release.

Participants without a private residence initially reside at the Clackamas County Sheriff's Office Residential Program. During this time, they collaborate with a specially assigned Parole and Probation Officer (PPO), who completes a risk and need assessment before developing an individualized behavior change plan.

Participants are supported in finding employment and transitioning into community-based sober housing. The STTL PPO and residential staff provide interventions and referrals for additional services. The goal is to reduce prison usage by expanding STTL eligibility to individuals without housing, while improving transitions to the community in a safe and responsive manner.

Which of the goals of the Justice Reinvestment Grant Program does this program meet?

Responses Selected:

Reduce prison usage while protecting public safety and holding individuals accountable

Reduce recidivism while protecting public safety and holding individuals accountable

If it reduces prison usage, briefly describe how below.

Example: "Reduce prison usage by diverting eligible individuals into mental health treatment, the program prevents incarceration for non-violent offenses and reduces reliance on prison beds."

STTL is a program that allows people to reintegrate into their communities upon early exit from their prison sentence. As a person reaches the end of their prison stay, they move into short-term supportive housing. STTL staff focus on prosocial needs while helping to mitigate anti-social or criminogenic behaviors and addressing substance abuse and physical or mental health needs.

If it reduces recidivism, briefly describe how below.

Example: "The program provides evidence-based mental health treatment and continuous support, reducing the likelihood of reoffending by addressing the root causes of participants' behavior."

STTL addresses criminogenic, education, and employment needs. Participants have access to assessments and treatment to meet their needs at the earliest intervention stages. As participants are on leave status from the DOC, the PPO maximizes engagement in supervision strategies. The PPO also assists clients in transitioning to clean, sober, and stable housing. The program helps participants transition from prison back into the community, ensuring success, accountability, and public safety, with a focus on breaking the cycle of incarceration.

## Target Population

Identify the target population(s) this program serves, including underserved groups as defined in HB 3064 (2019) (e.g., racial and ethnic minorities, women, LGBTQIA+ individuals).

## Gender Identity

**Responses Selected:**

Men

Women

Non-binary

*Race/Ethnicity (If it is a general eligibility program, select "all")*

**Responses Selected:**

All

## Other Historically Underserved Communities

Responses Selected:

LGBTQIA+

Risk Level

Responses Selected:

High

Medium

Which crime types does this program serve?

Responses Selected:

Driving Offenses (generally ORS chapters 811, 813)

Property Offenses (generally ORS chapters 164, 165)

Drug Offenses (generally ORS chapters 471, 475)

Which, if any, assessments do this program use?

Responses Selected:

PSC

LS/CMI

WRNA

Briefly describe how the above assessments are used in your program.

Example: "The PSC is used as an initial triaging tool to determine whether or not a candidate for our downward departure program will receive a more detailed assessment (WRNA or LS/CMI) later."

The PSC assessment serves as an initial triage tool to identify clients' needs. Adults on supervision then undergo a more comprehensive assessment (LSCMI for males and WRNA for females) to develop individualized treatment plans.

Has this program received a Corrections Program Checklist or the George Mason University Risk-Need-Responsivity Evaluation in the last 10 years?

No

If yes, when was the most recent review conducted?

If yes, briefly describe the outcome of the most recent review and any steps taken to address the findings of the assessment.

How does your program meet the legal definition of culturally responsive services as defined in SB 1510 (2022)?

("Culturally responsive service" means a service that is respectful of, and relevant to, the beliefs, practices, cultures and linguistic needs of diverse consumer or client populations and communities whose members identify as having particular cultural or linguistic affiliations by virtue of their place of birth, ancestry or ethnic origin, religion, preferred language or language spoken at home. A culturally responsive service has the capacity to respond to the issues of diverse communities and require knowledge and capacity at systemic, organizational, professional and individual levels of intervention.)

Provide specific examples of how your program addresses the cultural or linguistic needs of historically underserved communities. Include how staff are trained, services are tailored, and systemic or organizational efforts are made to ensure responsiveness.

Example: "Our program partners with culturally specific organizations to deliver trauma-informed peer mentorship for Indigenous participants. Staff receive annual training on culturally responsive practices, and program materials are translated into the primary languages of the populations we serve."

The Clackamas STTL program expands the opportunity for adults serving prison sentences to become eligible for an early release even if they do not have access to a private residence. STTL participants receive housing, treatment referrals, and additional services based on an individualized case plan designed to be culturally, trauma, and gender responsive by their STTL PPO. The STTL PPO and residential staff have completed bias and equity training to better understand disparities in the community and within the justice system. The residential program is designed to be culturally responsive with accommodations made for any participant in respect to needs they may have, including translation, religious practice, or cultural customs they request access to.

## Proposed Grant Program Four

Program Name

Clackamas Downward Departure Program

Was this program a part your county's Justice Reinvestment-funded programming in 2023-2025?

No

What type of program is this?

Downward Departure



Provide a summary of the program's purpose and key activities.

Example: “The Mental Health Diversion Program diverts individuals with mental health disorders away from incarceration and into treatment. Participants receive comprehensive case management, psychiatric care, and wraparound support. The program’s goal is to reduce recidivism and address untreated mental health conditions contributing to criminal behavior.”

The Clackamas County Downward Departure Program is an intensive supervision and treatment initiative for adults on supervision (AOS) with felony convictions and downward departure sentences. The program aims to divert high- and medium-risk justice-involved individuals (JIIs) from prison by offering evidence-based treatment approaches within the community that address risk factors contributing to recidivism and promote rehabilitation.

The program operates through a collaborative, team-based approach, bringing together multiple community partners to meet the unique risks and needs of participants. The core team will consist of: • Two Clackamas County Parole and Probation Officers • One Clackamas County Patrol Deputy • One treatment provider from Clackamas County Behavioral Health • One Peer Specialist Staff Member

This team will meet weekly to assess participant progress, ensuring effective communication and individualized support. They will evaluate engagement in supervision and treatment programs and tailor wraparound services to participant needs.

Supervision decisions will be guided by validated risk assessments. The program will employ swift and sure incentives, sanctions, and behavioral interventions to enhance engagement and improve outcomes.

Which of the goals of the Justice Reinvestment Grant Program does this program meet?

**Responses Selected:**

Reduce prison usage while protecting public safety and holding individuals accountable

Reduce recidivism while protecting public safety and holding individuals accountable

If it reduces prison usage, briefly describe how below.

Example: “Reduce prison usage by diverting eligible individuals into mental health treatment, the program prevents incarceration for non-violent offenses and reduces reliance on prison beds.”

The Clackamas County Downward Departure Program provides intensive supervision and treatment for adults with felony convictions serving downward departure sentences. Its goal is to divert high- and medium-risk Justice-Involved Individuals (JIIs) from prison by offering evidence-based community services that address recidivism and criminal

behavior. Using a multidisciplinary team, the program collaborates with community partners to provide tailored interventions for participants' unique needs. By focusing on rehabilitation, accountability, and support, the program aims to reduce prison sentences, enhance community safety, and improve outcomes for high-risk individuals.

If it reduces recidivism, briefly describe how below.

Example: "The program provides evidence-based mental health treatment and continuous support, reducing the likelihood of reoffending by addressing the root causes of participants' behavior."

The Clackamas County Downward Departure Program reduces recidivism by offering intensive supervision and treatment for high- and medium-risk adults serving downward departure sentences. The program provides evidence-based, community-based services that address criminal behavior causes such as substance abuse, mental health, and criminogenic thinking. Cognitive interventions promote long-term behavior change. A patrol deputy, trained in crisis intervention, supports mental health needs, increasing accountability and reducing absconding time. Probation officers use Motivational Interviewing and swift sanctions to reinforce accountability. This multidisciplinary approach helps reduce reoffending, improve rehabilitation, and enhance community safety.

## Target Population

Identify the target population(s) this program serves, including underserved groups as defined in HB 3064 (2019) (e.g., racial and ethnic minorities, women, LGBTQIA+ individuals).

### Gender Identity

Responses Selected:

Men

Women

Non-binary

Race/Ethnicity *(If it is a general eligibility program, select "all")*

Responses Selected:

All

### Other Historically Underserved Communities

Responses Selected:

LGBTQIA+

### Risk Level

Responses Selected:

High

Medium

Which crime types does this program serve?

Responses Selected:

Driving Offenses (generally ORS chapters 811, 813)

Property Offenses (generally ORS chapters 164, 165)

Drug Offenses (generally ORS chapters 471, 475)

Which, if any, assessments do this program use?

Responses Selected:

PSC

LS/CMI

WRNA

Briefly describe how the above assessments are used in your program.

Example: "The PSC is used as an initial triaging tool to determine whether or not a candidate for our downward departure program will receive a more detailed assessment (WRNA or LS/CMI) later."

The PSC is used as an initial triage tool to assess eligibility for the Downward Departure Program. For male participants, the LSCMI is used, while the WRNA is used for female participants. These validated, gender-specific assessments are completed within 30 days of supervision start, which is 30 days earlier than standard supervision. This ensures that evidence-based risk assessments guide decisions, allowing for appropriate, responsive, individualized treatment and case plans that align with the participant's specific risks and needs.

Has this program received a Corrections Program Checklist or the George Mason University Risk-Need-Responsivity Evaluation in the last 10 years?

No

How does your program meet the legal definition of culturally responsive services as defined in SB 1510 (2022)?

("Culturally responsive service" means a service that is respectful of, and relevant to, the beliefs, practices, cultures and linguistic needs of diverse consumer or client populations and communities whose members identify as having particular cultural or linguistic affiliations by virtue of their place of birth, ancestry or ethnic origin, religion, preferred

language or language spoken at home. A culturally responsive service has the capacity to respond to the issues of diverse communities and require knowledge and capacity at systemic, organizational, professional and individual levels of intervention.)

Provide specific examples of how your program addresses the cultural or linguistic needs of historically underserved communities. Include how staff are trained, services are tailored, and systemic or organizational efforts are made to ensure responsiveness.

Example: “Our program partners with culturally specific organizations to deliver trauma-informed peer mentorship for Indigenous participants. Staff receive annual training on culturally responsive practices, and program materials are translated into the primary languages of the populations we serve.”

The Clackamas County Downward Departure Program meets the legal definition of culturally responsive services as outlined in SB 1510 (2022) by prioritizing individualized, culturally sensitive approaches that address the diverse needs of justice-involved individuals. The program uses a multidisciplinary team approach, collaborating with community partners who specialize in providing culturally relevant treatment and resources, including those tailored to specific racial, ethnic, and cultural groups. Validated assessments guide personalized treatment plans, considering each participant’s cultural background, criminogenic risks, and stage of change. The program also ensures that culturally responsive practices are integrated into treatment, connecting participants to culturally relevant support and fostering inclusive environments. By promoting cultural competence in both treatment and supervision, the program supports positive rehabilitation outcomes and reduces disparities in the criminal justice system.

## **Planning and Implementation**

Describe the partnerships that will support your county's efforts to achieve Justice Reinvestment goals.

Example: “The county collaborates with local victim service providers, housing agencies, and mental health organizations to provide comprehensive support to program participants.”

Community partnerships are essential to the success of the Clackamas County Justice Reinvestment Program, which aims to reduce prison usage and improve recidivism outcomes. A multidisciplinary approach to supervising downward departure sentences, including parole and probation officers, treatment providers, a peer mentor, and a patrol deputy, ensures individuals receive appropriate supervision and treatment in the community. The CCJP provides a continuation of interventions and support when individuals are in custody. The Clackamas Substance Abuse Program (CSAP) provides

housing and treatment for high-risk individuals, addressing criminogenic factors and fostering long-term behavior change. The Short-Term Transitional Leave (STTL) program helps individuals reintegrate by allowing early release with supervision and treatment. This collaborative approach, integrating cognitive behavioral interventions, reduces incarceration and supports community reintegration. In response to the fentanyl crisis and mental health challenges, the Justice Reinvestment Program offers a holistic strategy to improve community safety and rehabilitation.

How does your county incorporate input from historically underserved communities and community partners in the design, implementation, and review of Justice Reinvestment programs?

Describe specific strategies or methods for collecting input and how this feedback influences program decisions.

Example: “We hold quarterly advisory board meetings with representatives from Black, Hispanic, and LGBTQIA+ communities to review program data and discuss areas for improvement. Feedback from these meetings informed the creation of a reentry housing program tailored to the needs of formerly incarcerated LGBTQIA+ individuals.”

Clackamas County prioritizes ongoing collaboration with community partners, including local organizations, treatment providers, the Sheriff’s Office, and behavioral health services. This ensures that programs are responsive to individuals' needs, especially those from underserved communities. The Local Public Safety Coordinating Council (LPSCC), with representatives from local agencies and community groups, plays a key role in decision-making and ensures community input is central.

The LPSCC provides continuous oversight, refining programs based on realistic outcomes and community feedback. This collaborative approach allows for real-time adjustments to ensure effectiveness and equity. By engaging diverse voices, Clackamas County ensures the program addresses high-risk individuals' needs, improves rehabilitation outcomes, reduces recidivism, and fosters successful reintegration into the community.

How will the county select which community-based victim service providers will be awarded funds? Will the county run a competitive process?

You can find a list of community-based service providers on the CJC website here.

Yes

If the county will run a competitive process, please briefly describe the process below.

We will establish clear, detailed evaluation criteria and issue a Request for Proposals (RFP). A review committee will carefully assess the written proposals based on the provider's experience, service quality, ability to meet community needs, and cultural competence. The committee will ensure that each provider's strengths align with the objectives of the program, ultimately selecting the most qualified organization(s) to receive funding. This process ensures a fair and transparent decision-making approach.

## Evaluation Plan

How will your county meet the evaluation requirement for this proposal?

Note: the application for the Evaluation Plan is scheduled for release in June.

Remit 3% of awarded funds to the CJC's statewide evaluation budget.

What is your suggested research topic for the CJC to study?

Effective treatment interventions and supervision practices for women that score Moderate on the WRNA

## 2025-2027 Competitive Grant

House Bill 3078 (2017) established a competitive grant to support downward departure prison diversion programs. Funding details for this grant will be announced once the legislature has finalized appropriations.

At this stage, we only need to know if your county will apply for the grant.

Note: The application for the Competitive Grant is scheduled for release in June.

Would you like to "opt-in" for the Competitive Grant?

Opt-in: Opting in means you intend to apply and be considered for funding.