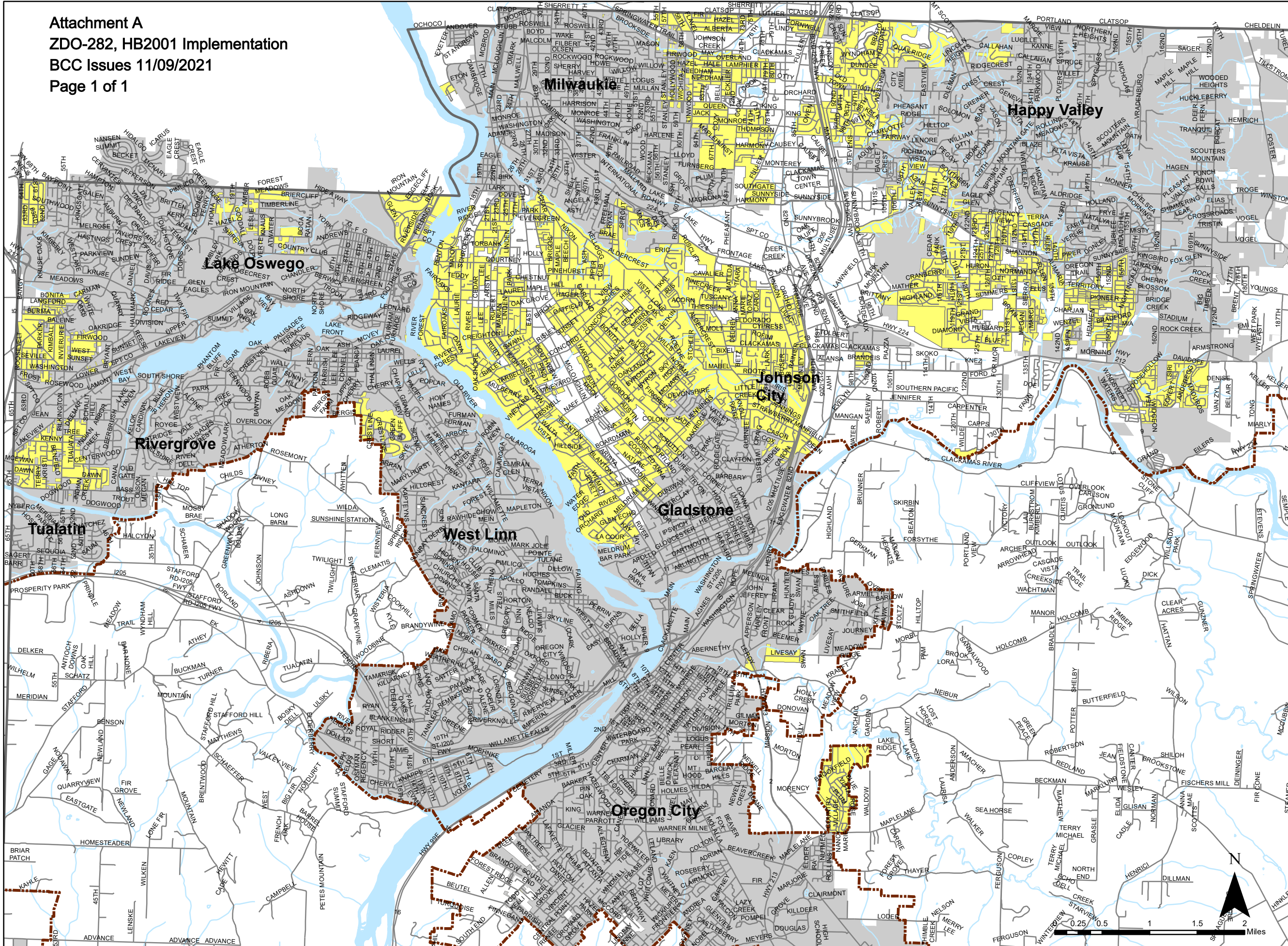







Areas Affected by House Bill 2001 (HB2001) Middle Housing Requirements



-  County line
-  Urban growth boundary (UGB)
-  Taxlots
-  Cities
-  Urban properties zoned for single-family homes



The information provided was derived from digital databases from Clackamas County's GIS. Although we strive to provide the best data we can, we sometimes use data developed by jurisdictions outside Clackamas County. Therefore, Clackamas County cannot accept any responsibility for any errors, omissions, or positional accuracy, and therefore, there are no warranties which accompany this product. Although information from Land Surveys may have been used in the creation of this product, in no way does this product represent or constitute a Land Survey. Users are strongly cautioned to verify all information before making any decisions.

