

CLACKAMAS COUNTY BOARD OF COUNTY COMMISSIONERS

Policy Session Worksheet

Presentation Date: 11/5/2019 **Approx. Start Time:** 1:30 p.m. **Approx. Length:** 30 mins.

Presentation Title: Bureau of Land Management (BLM) Northwest Oregon District Update

Department: Business and Community Services (BCS)

Presenters: Jose Linares, District Manager, BLM Northwest Oregon District
 John Huston, Cascade Field Office Manager, BLM Northwest Oregon District
 Rick Gruen, Manager, BCS County Parks & Forest

Other Invitees: Jennifer Valdez, Public Affairs Officer, BLM Northwest Oregon District
 Laura Zentner, Director, Business and Community Services

WHAT ACTION ARE YOU REQUESTING FROM THE BOARD?

N/A – The BLM Northwest Oregon District leadership team will be providing information and updates to the Board.

EXECUTIVE SUMMARY:

Clackamas County and the Bureau of Land Management (BLM) have a long history of collaboration, having partnered on many forest and recreation projects including Molalla River Corridor Recreation Area, Wilhoit Springs Park, Sandy Ridge Trail System, Powerline timberland property, Barlow Wayside Park, Boulder Creek land exchange, and Dump Stoppers (Title II funding).

During this Policy Session, the BLM Northwest Oregon District leadership team will provide the Board with updates on several topics and projects, including:

- Continued Implementation of the Western Oregon Resource Management Plan (RMP)
- Northwest Oregon District Timber Target for FY2019
- Implementation of the Western Oregon Tribal Fairness Act
- River restoration projects – Sandy, Salmon and Clackamas Rivers
- Recreation projects
- Illegal dumping and cleanup efforts
- Other items of interest

Additional background

The Oregon and California Railroad Revested Lands, known as the O&C Lands, lie in a checkerboard pattern through eighteen counties of western Oregon. These lands contain more than 2.1 million acres of forests with a diversity of plant and animal species, recreation areas, mining claims, grazing lands, cultural and historical resources, scenic areas, wild and scenic rivers, and wilderness.

The O&C Lands Sustained Yield Management Act of 1937 put the O&C lands under the jurisdiction of the U.S. Department of the Interior (BLM). The lands were classified as timberlands to be managed for permanent forest production, and the timber was to be sold, cut, and removed in conformity with the principle of sustained yield for the purpose of providing a permanent source of timber supply. The Act also provided for protecting watersheds, regulating stream flow,

contributing to the economic stability of local communities and industries, and providing recreational facilities.

Clackamas County, which is one of the 18 western Oregon O&C counties and is part of the BLM Northwest Oregon District, contains approximately 90,000 acres of BLM managed O&C forestlands.

FINANCIAL IMPLICATIONS (current year and ongoing):

Is this item in your current budget? N/A YES NO

What is the cost? N/A

What are the funding sources? N/A

STRATEGIC PLAN ALIGNMENT:

- **How does this item align with your Department's Strategic Business Plan goals?**
This informational update aligns with key results of several BCS programs by providing policymakers with information needed to make informed decisions regarding County-owned timberlands and ensure that forest health is preserved and enhanced for future generations.
- **How does this item align with the County's Performance Clackamas goals?**
This informational update aligns with the Board's strategic priority of *Honoring, Utilizing, Promoting and Investing in our Natural Resources*.

LEGAL/POLICY REQUIREMENTS:

N/A

PUBLIC/GOVERNMENTAL PARTICIPATION:

BCS County Parks & Forest and BLM have a long-standing partnership to promote and enhance forest resources and outdoor recreation on forest lands in Clackamas County. Clackamas County is one of 18 O&C Counties and a member of the Association of O&C Counties.

OPTIONS:

N/A

RECOMMENDATION:

N/A

ATTACHMENTS:

- Bureau of Land Management Northwest Oregon District Elected Officials Semi Annual Update (Spring 2019)

SUBMITTED BY:

Division Director/Head Approval _____

Department Director/Head Approval _____

County Administrator Approval _____



For information on this issue or copies of attachments,
please contact Rick Gruen @ 503-742-4345

Bureau of Land Management Northwest Oregon District Elected Officials Semi Annual Update



Welcome to the 2019 Spring issue of the BLM’s Northwest Oregon District Elected Officials Update. Significant updates include:

- **Continued implementation of the Western Oregon Resource Management Plan (RMP)/Final Environmental Impact Statement (EIS):** The RMP determines how the BLM manages 2.5 million acres of land to further the recovery of threatened and endangered species, provide clean water, restore fire-adapted ecosystems, produce a sustained yield of timber products, coordinate management of lands surrounding the Coquille Forest with the Coquille Tribe, and provide recreation opportunities. These lands provide numerous multiple use benefits across a “checkerboard” pattern of federal lands. The RMP is available at <http://www.blm.gov/or/plans/rmpswesternoregon/>.
- **Northwest Oregon District Timber Target for FY2019:** The District has successfully offered and sold three timber sales to date, totaling 20.3 million board feet over 471 acres. Nineteen sales remain to be offered for the second half of FY2019 totaling over 124 million board feet across 3,924 acres.
- **Implementation of the Western Oregon Tribal Fairness Act (WOTFA):** The Northwest Oregon District continues to play a large role in the implementation of WOTFA, a bill signed into law on January 8, 2018. This legislation directs the BLM to transfer over 32,000 acres of land to two Western Oregon Tribes, the Cow Creek Band of Umpqua Tribe of Indians and the Confederated Tribes of the Coos, Lower Umpqua, and Siuslaw Indians. These lands are in trust for the benefit of the tribes in perpetuity, and BLM is working with the tribes and BIA to ensure that key facets of the O&C timber program, such as the Reciprocal Rights-of-Way, benefit the tribes and other longstanding rights-holders across Western Oregon. The Act also directs the BLM to redesignate Public Domain lands in Western Oregon as O&C Lands to ensure that the land transfer does not negatively affect the counties of Western Oregon who are entitled to a certain percentage of timber receipts from O&C Lands. This redesignation process is in the early stages and is required to be complete by January 8, 2020. More information is available at: <https://www.blm.gov/oregon-washington/serving-america/western-oregon-tribal-fairness-act>

You are always welcome to visit District lands with us! We would be happy to arrange tours at your request. If you have questions or would like more information, contact Public Affairs Officer Jennifer Velez at (541) 222-9241 or jvelez@blm.gov.

Jose L. Linares
Northwest Oregon District Manager

Cascades Field Office

John Huston, Field Manager; 503-315-5969

Counties: Clackamas (76,711 acres), Multnomah (4,130 acres), Marion (21,015 acres),
Linn (86,967)

River Restoration

Lower Sandy - Oxbow Project

The Oxbow Restoration Project was completed in summer of 2018 on BLM lands, which are part of Oxbow Regional Park. The project includes construction of a wood jam on an outside bend of the Sandy River and construction of several large wood habitat structures on the margin of the river floodplain. This effort provides cover for juvenile salmon, and reconnects river flows to a 0.5 mile long side channel to provide rearing habitat for juvenile salmon and steelhead. City of Portland/Metro was the project lead and funded the restoration work, including contracting the construction for the restoration actions.

North Fork Clackamas River Aquatic Restoration Project

The North Fork Clackamas River Restoration Project (Phase II), implemented in the summer of 2018 on BLM lands along the lower North Fork of the Clackamas River, provides eight side channels totaling 3,825 feet of restored side channel habitat and 8.2 acres of reconnected floodplain, via the construction of wood jams at ten project sites on a 0.8-mile-long reach of the North Fork of the Clackamas River.



The North Fork Clackamas River Restoration Project wood jams provide cover and better water quality to help reconnect flows to historic side channels.

The Clackamas Watershed Council and BLM partnered on the project, with the Watershed Council contributing more than \$100,000 in competitively awarded conservation grants for contracting the construction of the restoration actions. BLM contributed in-kind time for the design and supervision of the project, NEPA and ESA permitting work, as well as 50 trees needed to construct the wood jams.

Salmon River Restoration Project

BLM in partnership with The Freshwater Trust and the Sandy River Basin Partners recently restored 0.5 mile of the Salmon River near Welches, Oregon. Habitat restoration actions included the construction of three main channel wood jams to restore instream complexity and cover for adult and juvenile salmon and steelhead, and connecting river flows to two side channels, a ten acre wetland, and a 0.5 acre off-channel pond that provide high quality rearing habitat for juvenile salmon. The partners also restored habitat complexity to four main channel riffle habitats with addition of large boulders, and restored habitat complexity of an additional tributary stream and side-channel with the addition of trees and logs. The partners contributed \$400,000 in competitively awarded conservation grants to fund the restoration work. BLM contributed \$80,000 in restoration funding as well as in-kind time for project supervision, monitoring, NEPA, and ESA permitting work.



Example of off-channel pond and wetland habitat connected to the Salmon River flows, restoration work completed in 2018.

Recreation Updates

Fishbender Bended Salvage II Project

Fishermen's Bend Recreation Site, one of the most popular recreation sites on BLM land in the Cascades Field Office, had experienced unprecedented tree mortality with the death and removal of over 1000 hazard trees in the last three years. The field office is preparing another salvage sale to maintain visitor safety in the park. The value of the fallen hazard trees pays for the highly technical tree falling and debris cleanup that would otherwise cost taxpayers over hundreds of thousands of dollars to clean up. Last year, staff completed the salvage project timely to ensure the park opened on time, with no loss of visitor services. Staff are working on a long-term vegetation management plan for the transition from a conifer to a hardwood dominated forest while

maintaining as much of the original character setting as possible. In the meantime, visitors will be treated to all the same great service and amenities they have traditionally experienced.



Fishbender Salvage Project I completed in spring 2018.

Johnny Ryall Trail Development

In August 2018, the BLM signed the Decision Record for the Johnny Ryall Trail Development Project EA. The project involves the construction of 1.9 miles of mountain bike trail to allow for additional egress from the existing Sandy Ridge Trail System. The new trail provides an alternate exit from the trail system that separates advanced riders from intermediate riders as they exit the system. This increases safety at a place that was once known as a bottleneck for riders. Construction of the Johnny Ryall Trail concluded in September 2018.



Johnny Ryall trail features



Fig. 1.

Fig. 2.

Cleanup Efforts

A highly successful public volunteer cleanup of the Quartzville River corridor occurred December 1, 2018. Approximately 50 volunteers participated with Linn County Recreation, Linn County Law Enforcement, and BLM staff to clean up recreation sections managed by BLM, USFS and portions of Linn County. The group of volunteers from the local areas of Sweet Home, Lebanon, Albany and elsewhere in the mid-Willamette Valley are very motivated to help keep the Quartzville River corridor clean for all to enjoy. The BLM is excited to coordinate with this group on future cleanup plans.



One of many sites cleaned up in the Quartzville River Corridor.

Partnerships

2018 Soil Moisture Regime Investigation

On May 30, 2018, USDA-Natural Resources Conservation Service staff, in partnership with the University of Idaho and BLM installed a soil moisture monitoring station on BLM land. Soil moisture sensing and soil temperature probes were also installed. The probes will remain for two to four years collecting data to verify or update the moisture/temperature regime. This data will be used to generate more accurate Soil Survey mapping, which is used by the field office to inform land management decisions, specifically on future timber sales.



Jason Martin, Soil Survey Office, checking moisture probe readings.

Willamette Valley Tree Mortality Study

As previously mentioned the field office experienced dramatic tree die-off at Fishermen's Bend, and have noticed significant tree health issues at other low elevation locations along the Willamette Valley. As a result, the field office has collaborated with researchers from the Forest Service - Pacific Northwest Research Station and Oregon State University to study the factors causing the mortality at Fishermen's Bend and other state and local government-run parks in the area. Field office personnel collected samples during the summer of 2018 from dead trees that were felled as part of hazard tree mitigation operations. The samples will be processed by the partners and the data will be analyzed to help inform management decisions on overall park health. The overall goal of the partnership is to help predict future forest health issues on public land and efficiently use staff time to manage public safety in parks.

Telecommunications

The field office continues to collaborate with Clackamas County's C800 group to establish a network of emergency cell communication towers. The C800 group currently has two applications being assessed, one located at Crutcher Bench and the second located near Welches above Sandy Ridge Mountain Bike park. Both locations would benefit Clackamas County's emergency response system by increasing their communication coverage in remote areas. The C800 group has notified us of a third location they are considering and plan to submit a third application for consideration in the near future.

Forest Management

The Cascades Field Office continues to provide large volumes of sustained yield wood products to local economies and has several timber sales in the queue, both active and sold.

The field office released the Groovy Tunes Timber Management Environmental Assessment (EA) for public review in spring of 2018. This was the first EA for the office using the new 2016 Northwestern and Coastal Oregon Record of Decision and Resource Management Plan (ROD/RMP). The first sale, Watchtower, was protested. The protest was denied and there were no subsequent actions. The sale is expected to produce approx. 9.1 MMbf of timber for local economies. Three additional timber sales will be offered in the 2019 sale year, totaling approximately 34 MMbf of Allowable Sale Quantity (ASQ) timber volume.

The Bi-County Timber Management EA will be available for public review in the spring of 2019; proposing ASQ timber harvest on approximately 580-600 acres of timberland in Clackamas County.

2019 Proposed and Active Forest Management Projects

Name	County	Est. Volume (mbf)	Status	Planned Offer Date
Hole in the Road	Clackamas	4,380	Active	Sold
Belly Twister	Linn	4,444	Active	Sold
Bent Beekman	Linn	5,152	Active	Sold
Chuck Wagon	Clackamas	1,000	Active	Sold
Roaring Toads	Linn	8,813	Active	Sold
Outer Limits	Linn	3,500	Active	Sold
Jungle Gem	Marion	1,000	Active	Sold
Fawn Two	Marion	3,500	Active	Sold
Watchtower	Linn	9100	Authorized	Sold
Purple Hazen	Linn	10,902	Dec. Rec Issued	Auction Date 3/20/2019

Marys Peak Field Office

Paul Tigan, Field Manager – 503-315-5968

Counties: Polk (40,114 acres), Benton (57,845 acres), Lincoln (20,175 acres)

Timber Sales & Management

The Marys Peak Field Office maintains an active portfolio of ongoing timber sales and planned offerings for Fiscal Year 2019 and beyond. Active timber sales in Polk County include the Rowell Creek Timber Sale (13.7 MMBF), Cedar Ridge Timber Sale (6.2 MMBF), and the Blue Mule Timber Sale (5.6 MMBF). In Benton County, our active sales include the Rainbow Ridge Timber Sale (3.8 MMBF), South Beaver Timber Sale (2.3 MMBF), Tender Rail (12.2 MMBF), and the Greasy Bot Timber Sale (3.0 MMBF). The field office will re-offer the Lucky Rowell Timber Sale (Polk County, 4.12 MMBF) in March 2019 after it went no bid in 2018. The field office will meet its Annual Sale Quantity (ASQ) Commitment in April 2019 if it offers Flight Path (16.7 MMBF) from the Wild Goose Timber Sale EA. Future timber sale planning includes projects in both Polk and Benton Counties.

Wild Goose Timber Sale EA

The field office will release the Wild Goose Timber Sale EA this year, following the process of public scoping and our internal analysis. This is the field office's first environmental analysis for timber sales under the new Northwestern and Coastal Oregon Resource Management Plan (RMP). The project area will provide the National Environmental Policy Act (NEPA) analysis for Harvest-Land Base timber sales between 2019 and 2022. The timber sale EA will provide alternatives for achieving timber program objectives identified in the RMP, including timber production through regeneration harvests.

This planning area is also within the boundaries of the Gooseneck Extensive Recreation Management Area, which has been the subject of interest as public use in the area increases. The Gooseneck is a publicly accessible area of approximately 7,000 acres of land northwest of Dallas, about 45 minutes from Salem. There is a long-standing management challenge in this area with unsafe recreating, dumping of household trash, and target trash left by the public. The field office has long-term plans to complete a Recreation Area Management Plan (RAMP) in order to address the recreation management issues at the site.



A typical overstocked stand in the Wild Goose planning area.

National Public Lands Day

The Marys Peak Field Office hosted three National Public Lands Day (NPLD) events the weekend of September 22-23, 2018 – one in each county of the field office. In Polk County, Marys Peak staff partnered with the Polk County Sheriff’s Office and the Polk County Dump Stoppers program to host the inaugural “Buckets of Brass” shooting site cleanup in the Gooseneck Extensive Recreation Management Area. We had over 70 volunteers cleanup 2,000 pounds of shooting trash and other litter. That number doesn’t include the 1970 Volkswagen Beetle that some ingenious Dallas High School students managed to yard into the back of their pickup. We look forward to continuing this event on an annual basis.



Polk County Dump Stoppers support NPLD cleanup.

In Benton County, Marys Peak partnered with the Benton County Sheriff’s Office and TrashNoLand.org, an advocacy group that seeks to educate recreational shooters on the proper way to engage in shooting sports on public lands. They specifically focus on shooting trash responsibility and fire safety. We welcomed over 60 volunteers to the Marys Peak quarry, a popular site for shooting on BLM land in Benton County. The volunteers filled a 30-yard dumpster of shooting trash, weighing in over 4,000 pounds.



Volunteers collect over 4,000 pounds of trash at local quarry for NPLD.

In Lincoln County, the Yaquina Head staff welcomed over 25 volunteers to do end-of-summer maintenance in the historic light keeper’s garden and the trails system throughout the 100-acre site. Yaquina Head has held a National Public Lands Day event every year since the event was first conceived 25 years ago.



Local volunteers support clean-up efforts at Yaquina Head ONA for NPLD.

Yaquina Head Staircase & Lighthouse Overlook Redesign

Staff from the field office, Yaquina Head Outstanding Natural Area, and Northwest Oregon District are working with contractor SEH, Inc. to redesign the Cobble Beach Staircase and Lighthouse Observation Deck through the BLM’s deferred maintenance program. The decks, which are over 25 years old, are showing their wear and tear from being in a salt, wind, and water-driven environment. The redesign and rebuild of the facilities will span three phases and hopefully get underway in September of 2019. We engaged in a public process to hone in the design of both the stairs and lighthouse observation area, with the intent to better blend into the surrounding environment and last longer in the punishing coast weather patterns.



Cobble Beach staircase rendering.



Lighthouse Observation Deck.

Fall Creek Fire

2018 was a relatively quiet year for fire in the Marys Peak Field Office. Early in the year we had two neighboring pile burns escape and come onto BLM managed lands. We monitored those sites throughout the year and determined that neither caused any resource damage. On July 30, 2018, a fire that started in a Weyerhaeuser operation near Fall Creek escaped into a 20-year old plantation stand and into a section of BLM managed timber. Working with ODF through the new agreement and Northwest Oregon Interagency Fire, the fire was contained in one operational period. Field Manager Paul Tigan visited the fire on the night of July 30th and toured the fire the next day with Fire Management Officer Ed Hiatt, Deputy FMO Dan Eddy, and West Oregon ODF Forester Mike Totey. The fire was contained through the good work of over 80 state, private, and federal personnel and three aircraft. The fire burned approximately 9 acres of BLM managed land.



Fall Creek Fire.

Siuslaw Field Office

Cheryl Adcock, Field Manager; 541-683-6145

Counties: Lane (147,643 acres), Benton (219 acres) and Douglas (14,500 acres)

Salmon Watch

In collaboration with the McKenzie Watershed Council, Oregon Department of Fish and Wildlife (ODFW), and Eugene Water and Electric Board 2018 was the 25th annual Salmon watch program. On average 1,200 middle and high school students from approximately 15 different schools in Lane County participate in the program. This program provides an opportunity for students to see salmon in stream as they return home to spawn. The majority of students utilize the BLM Whittaker Creek Campground to view salmon, while the remaining venture up the McKenzie River. Six BLM employees from the Siuslaw field office contributed more than 100 hours to make this event a success.

Special Forest Products

The Siuslaw Field Office has stayed busy selling Special Forest Product permits for forest items in the south zone of the Northwest Oregon District. The program saw a great increase in total revenue this past year; revenue totals increased from \$57,604.25 in fiscal year 2017 to \$74,004.14 in fiscal year 2018. The average annual sales of Special Forest Products from 2013-2018 was \$63,787.55 and the annual average number permits sold was 1,062. The most common products permitted are boughs and salal, which are commonly collected for greenery to be used in wreaths and floral decorations, and the deliciously edible Chanterelle mushrooms.



Highly sought after Chanterelle mushroom.

West Eugene Wetlands Burning

Burning enhances rare Willamette Valley prairie ecosystem and supports prairie dependent species by providing habitat for several federally listed or special status species, such as Fenders Blue Butterfly, Willamette Daisy, and ground nesting birds. Additionally, burning improves habitat while reducing treatment impact to soil, water and cultural resources relative to other methods such as mowing, disking, and herbicide application. Burning also reduces the risk of wildfire to the public, thereby saving time in labor and resources.

In 2018, there was a 56% increase in acres burned for habitat restoration, from 2017, at the West Eugene Wetlands. BLM participated in burning a record 702 acres at the West Eugene Wetlands during the fiscal year. Between 1986 and 2018, 4,903 acres of burning occurred to improve habitat restoration for all threatened and endangered species present at the wetlands.

Burning at the Wetlands occurs in partnership with US Fish and Wildlife Service, The Nature Conservancy, City of Eugene Parks and Open Spaces, Springfield/Eugene Fire Department, US Army Corps of Engineers, The Nature Conservancy, US Army Corps of Engineers, Lane County Parks and Recreation, Friends of Buford Park and Mt Pisgah, Oregon Department of Fish and Wildlife, Oregon Department of Forestry, and the Junction City Fire Department. We thank our partners for supporting the work of habitat restoration and protection of species in this unique environment.



Prescribed burning enhances habitat restoration.

Tillamook Field Office

Karen Schank, Field Manager; 503-815-1127

Counties: Tillamook (48,468 acres), Columbia (10,842 acres), Washington (11,527 acres), Yamhill (32,590 acres), Clatsop (39 acres)

Timber Management

Active / Planned Timber Sales for 2019

The Tillamook Field Office maintains an active portfolio of ongoing timber sales and planned offerings for FY 2019. Active timber sales in Columbia County include the Three Rivers Timber Sale (3.5 MMBF), the Quarry 5 Timber Sale (7.6 MMBF), the 33 Mystery Timber Sale (3.8 MMBF), the Dutch Treat Timber Sale (10.1 MMBF), and the Snaggletooth Timber Sale (6.2 MMBF). In Washington County, the Baker's Dozen Timber Sale (4.9 MMBF) and the Number 4 Timber Sale (4.2 MMBF) are both active. In Tillamook County, active sales include the Bell Tower Timber Sale (10.1 MMBF), the Super Cooper Timber Sale (8.4 MMBF), and the Night Walker Timber Sale (6.1 MMBF). Portions of both the Super Cooper Timber Sale and the Night Walker Timber Sale are located in Yamhill County. The field office anticipates selling the Lookout Below, Silver Lining, and Moore's Meadow Timber Sales in FY 2019, all of which are located in Yamhill County.

Timber Management Projects - North Yamhill and Coast Creek

The field office Interdisciplinary staff will complete analysis on the North Yamhill Timber Management Project in June 2019. The BLM is proposing forest management actions, including timber harvest, on approximately 1,893 acres of BLM-administered lands in the Upper North Yamhill drainage of the North Yamhill River watershed. Forest management treatments consist of both commercial and non-commercial treatments in Harvest Land Base (HLB) and Riparian Reserve (RR) land use allocations, and include regeneration harvest, commercial thinning, riparian commercial thinning and tree felling, slash reduction treatments, gap planting and riparian under planting. The BLM is also proposing transportation management actions to facilitate harvest actions, including temporary and permanent road construction, road improvement, road renovation, timber haul, road decommissioning (long-term closure), rock quarry development, and rock processing for road use. The various forest management treatments will be accomplished through a combination of 5-7 commercial timber sale contracts and service contracts.

Beginning in August 2019, staff will begin scoping on the Coast Creek Timber Management Project. The project will look at commercial timber harvest on approximately 1,200 acres of forest stands in both the Harvest Land Base and Riparian Reserve land use allocations. Associated work includes road construction, renovation and maintenance, culvert replacement and installation, rock processing for road use, and site preparation and tree planting. Preliminary work in support of this project is underway or completed, including wildlife and botany surveys, stream inception surveys and forest stand exams. This project is expected to result in 3-5 commercial timber sales offered in 2020 and beyond.

Nestucca National Back Country Byway Project

This project is located on 41 miles of BLM controlled Nestucca, Bald Mountain and Bible Creek access roads in Tillamook and Yamhill Counties. It includes widening and paving the 2.7 mile gravel portion of the Nestucca Access Road, replacing undersized and/or failing culverts, installing additional cross-drain culverts, chip sealing paved road segments, repainting fog lines and center lines, repairing multiple road slump areas, paving several existing turnouts and constructing additional turnouts or strategically widening identified stretches along Bible Creek and Bald Mountain Access Roads, installing traffic and informational signs, and rehabilitating an old asphalt waste site into a day use area along the river. A decision and a finding of No Significant Impact were issued in February 2017.

The project will be implemented in phases through multiple years. Project 1 includes widening and paving, replacement of several large culverts along the gravel section, upgrading turnouts on Bible Creek and Bald Mountain Access Roads, as well as installation of new signage and safety features. Project 1 began in May 2018 and is being implemented through an agreement with the Federal Highways Administration. It is expected to be completed in September 2019. Project 2 includes the replacement of the Fairdale Culvert which is currently a partial barrier to fish passage and a priority for the Salmon SuperHwy. Project 2 will be implemented through a service contract in the summer of 2019.

The Nestucca National Back Country Byway Project is funded through a variety of sources including the BLM's Deferred Maintenance and Capital Improvement funds, Western Oregon Transportation and Facilities Operation and Annual Maintenance funds, Western Oregon Recreation Management funds, Western Oregon Forest Management funds, and primarily by Federal Lands Transportation Program (FLTP) funds.



Nestucca Back Country Byway Road Network.

Upper Willamette Field Office

Becca Brooke, Field Manager; 541-683-6287

Counties: Lane (140,592 acres), Linn (87,084 acres)

Recreation Updates

Thurston Hills Non-Motorized Trails and Forest Management Project

BLM awarded the Pedal Power timber sale associated with the Thurston Hills non-motorized trail and forest management project to Seneca Sawmill Co. on February 1, 2019. This approximately 92-acre regeneration harvest located near Springfield, Oregon, will occur over the next two years. Hundreds of green trees will be left throughout the cut area. The harvest will be complete by spring of 2021, at which point the BLM will work with partners to re-plant the area and construct approximately 8.5 miles of new biking and hiking trails, connecting to the existing trails at Willamalane's Thurston Hills Natural Area.

Row River Trail Improvements EA

The BLM is currently making improvements on the BLM's portion of the Row River Trail east of Cottage Grove, Oregon in order to prolong the life of this popular recreational facility. Six culverts were replaced in the fall 2018 with larger culverts designed to accommodate 100-year floods, and edge repairs, crack sealing, and pavement repairs are ongoing. Weather permitting, project grading is anticipated to be completed by April 30, and paving by June. During these upgrades, sections of the trail will be closed during weekdays, but will remain open on weekends.

Timber Sale Management

Summary of past and planned Timber Sales – April 2019 through September 2019

Name of Timber Sale	County	Est. Volume (mbf)	Status	Planned Offer Date
Finn Again	Lane	2,471	Active	Sold
Lonesome Second Fiddle	Lane	9,345	Active	Sold
Mid Indian	Lane	8,012	Active	Sold
Missing Links	Lane	4,349	Active	Sold
What's Bruin	Lane	3,941	Active	Sold
Wild and Wooly	Lane	1,570	Active	Sold
Garoutte Road	Lane	2,917	Awarded	Sold

Table For 22	Lane	7,794	Awarded	Sold
Ratified	Lane	9,619	NEPA Complete	4-25-19
London Road	Lane	8,284	Planning Phase (NEPA)	6-27-19
High Roller	Linn	8,085	Planning Phase (NEPA)	7-25-19
Crooked Roller	Lane/Linn	5,000	Planning Phase (NEPA)	8-22-19

Shotcash Timber Harvest EA

The field office is preparing the Shotcash EA to analyze regeneration harvest (and associated retention), commercial thinning, snag creation, roadwork (construction, renovation, improvement, and decommissioning), slash reduction, reforestation, and Off Highway Vehicle (OHV) trail reconstruction in the Marcola area north of Springfield, Oregon. The EA will analyze 3 to 5 timber sales in both Linn and Lane Counties with an estimated harvest volume of 55 million board feet of timber removal. The EA is planned for public release in spring 2019 with the first timber sale being offered in August of this year.

London Road Timber Management Project EA

The field office has prepared the London Road EA to analyze regeneration harvest (and associated retention), commercial thinning, snag creation, road work (construction, renovation, improvement, and decommissioning), slash reduction, and reforestation, in the London vicinity south of Cottage Grove, Oregon. The EA will analyzed one timber sale in Lane County with an estimated harvest volume of 8.2 million board feet of timber removal. The EA was out for public comment in November/December 2018, with two comments received. The IDT is responding to those public comments and the EA is being finalized, with a planned decision record and timber sale auction in June of this year.

King Mosby Timber Management Project EA

The field office has begun planning efforts for the King Mosby Project EA to analyze regeneration harvest (and associated retention), commercial thinning, snag creation, roadwork (construction, renovation, improvement, and decommissioning), slash reduction, and reforestation, in the Mosby creek vicinity southeast of Cottage Grove, Oregon. The EA will analyzed multiple timber sales in Lane County with an estimated harvest volume of 24 million board feet of timber removal. The planning area is in the Low Intensity Timber Area (LITA), which required higher levels of retention. The LITA Land Use Allocation overlaps with Northern Spotted Owl Critical Habitat. Public scoping was completed in January 2019, with the release of the EA for public comment planned for this fall.

Restoration Projects

Smith Creek Tributary - Restoration Project

The Smith Creek Tributary Culvert-to-Bridge Restoration Project will be implemented on BLM lands this summer. The project will remove a metal culvert that is a fish barrier and replace it with a concrete bridge to provide complex rearing and hiding cover for adult and juvenile cutthroat trout. Construction of several large wood habitat structures in-stream and on the margin of the floodplain provide cover for juvenile fish and recovering connectivity of approximately 1 mile of fish habitat. This project is in conjunction with two concrete bridge installations that Weyerhaeuser Company completed.



Smith Creek Restoration Project.

Large Woody Debris In-stream Restoration Projects

The Upper Willamette Field Office plans to implement two in-stream restoration projects this summer. The Shotgun Creek Restoration Project will improve fish habitat for approximately 2 miles of stream through wood placement to enhance pool habitat for fish and other aquatic organisms. This will help route and store sediment, and protect banks from excessive erosion. This project is located through the Shotgun Creek Recreation Park near Marcola. The Garoutte Creek Instream Habitat Enhancement project will use trees removed for road construction and renovation of the London Road Timber Sale in a similar manner.

Partnering with Community Groups and Schools in Watershed Restoration

The field office plans to donate approximately 500 trees from BLM managed riparian reserves to the McKenzie River Trust for multiple restoration projects on the McKenzie River, east of Finn Rock. The office partners with watershed councils and local schools to provide education in riparian monitoring and restoration for high school students. Local students from Springfield, Oregon assisted with post-restoration channel monitoring and help take stream measurements.

Prairie Restoration

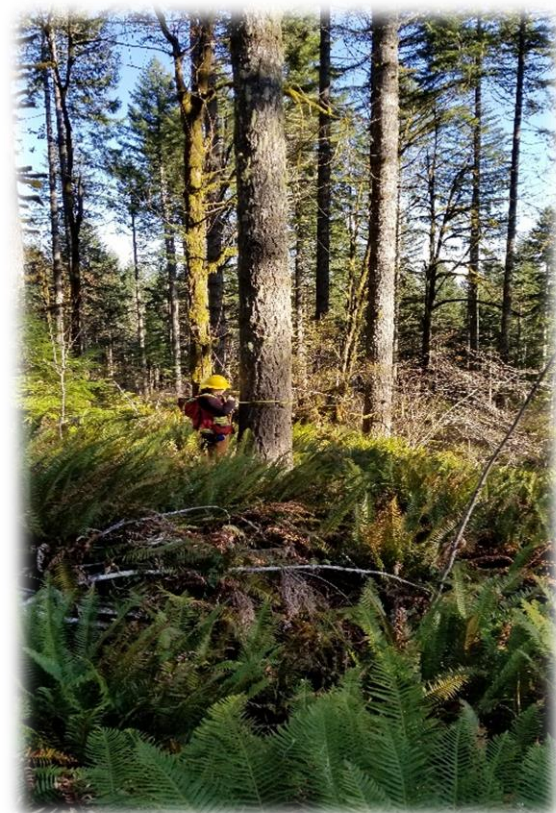
There are several prairie restoration sites in the field office. Oak Basin may be one of the largest prairie sites where restoration work has occurred for several years. Other sites include Lost Creek, Dorena, Garoutte, McGowan, Horse Rock Ridge and Twin Prairie. Restoration actions such as weed control, native seed collection, removal of woody vegetation, mowing, placement of shade cloth, and seeding occur at appropriate times.

Monitoring of species listed under the Endangered Species Act (ESA) such as Kincaid’s Lupine and Fender’s Blue Butterflies are carried out at regular intervals. This work is largely coordinated with strong partnerships developed over several years with Institute of Applied Ecology and The Nature Conservancy. Prairie restoration will continue through 2019.



Oak Basin Prairie Restoration Project.

Silviculture Treatments



Silviculture Treatment example.

Silviculture treatments are implemented by the BLM using a centralized approach for the Upper Willamette and Siuslaw Field Offices. Approximately 36 acres will be re-planted after timber harvest in both field offices during the Spring of 2019. Species to be planted include a mix of Douglas Fir, Western Red Cedar, Ponderosa Pine and Western Hemlock. Weed treatments will be initiated on about 100 acres of roads and forest lands. Weed treatments are implemented through contracting and assistance agreements with Looking Glass Youth Crews. Pruning will be initiated on about 700 acres of stands that were pre-commercially thinned and are in locations where there is higher risk of fire in the Wildland Urban Interface (WUI). Stands needing pre-commercial thinning were completed on 383 acres in 2018, in 2019 about 78 acres of stands will be pre-commercially thinned. Stand exams which provide data about stand conditions, will be completed through contract on several acres.

BLM Northwest Oregon District Background Information

The Northwest Oregon District manages 800,578 acres of public land spread across fourteen counties in northwestern Oregon. These lands are managed for timber production, recreation, special forest products, wildlife and fisheries habitat and much more. Sightseeing, camping, hiking, boating, hunting, fishing, mountain biking, and collecting mushrooms are just a few of the activities Oregonians enjoy on Northwest Oregon BLM lands. Approximately 78% of Oregon's population lives within the boundaries of the District, posing urban interface challenges and opportunities that the NWO engages with partnerships for collaborative solutions.

Some of the more well-known recreation sites in the Northwest Oregon District available for public enjoyment include: the West Eugene Wetlands, Yaquina Head Outstanding Natural Area north of Newport, the Molalla River Recreation Area and Table Rock Wilderness just northeast of the City of Molalla, the Sandy Ridge Mountain Bike Trail System and Cascade Streamwatch at Wildwood Recreation Site west of Mt. Hood, the Shotgun Creek OHV Trail system, and the Alsea Falls Trail System southwest of Corvallis.