

## **Chapter 8: Structural Ignitability Policies and Programs**

---

### **Structural Ignitability Policies and Programs**

Structural Ignitability deals with the home itself and its immediate surroundings; also known as the “Home Ignition Zone.” The Home Ignition Zone includes the home and an area surrounding the home within 100-200 feet. Important factors that either deter or promote Structural Ignitability include:

- **The Structure Itself:** roofing, roofing assembly, building materials and building setbacks on slopes
- **Defensible Space:** Distances 30-100 feet or more of fire resistant vegetation around homes
- **Fire Access:** Road, driveway and bridge width and condition

### **Structural Ignitability Objectives**

- I. Review rules/laws/guidance pertaining to wildfire planning, prevention, protection, and develop recommendations for improvements.
- II. Coordinate and facilitate communication between County Planning and Building and the fire districts.
- III. Identify incentives for property owners to participate in fire prevention activities, including maintenance of defensible space, use of fire-resistant building materials, etc.
- IV. Inform public about codes and ordinances related to wildfire prevention and solicit feedback from the public regarding recommended improvements.

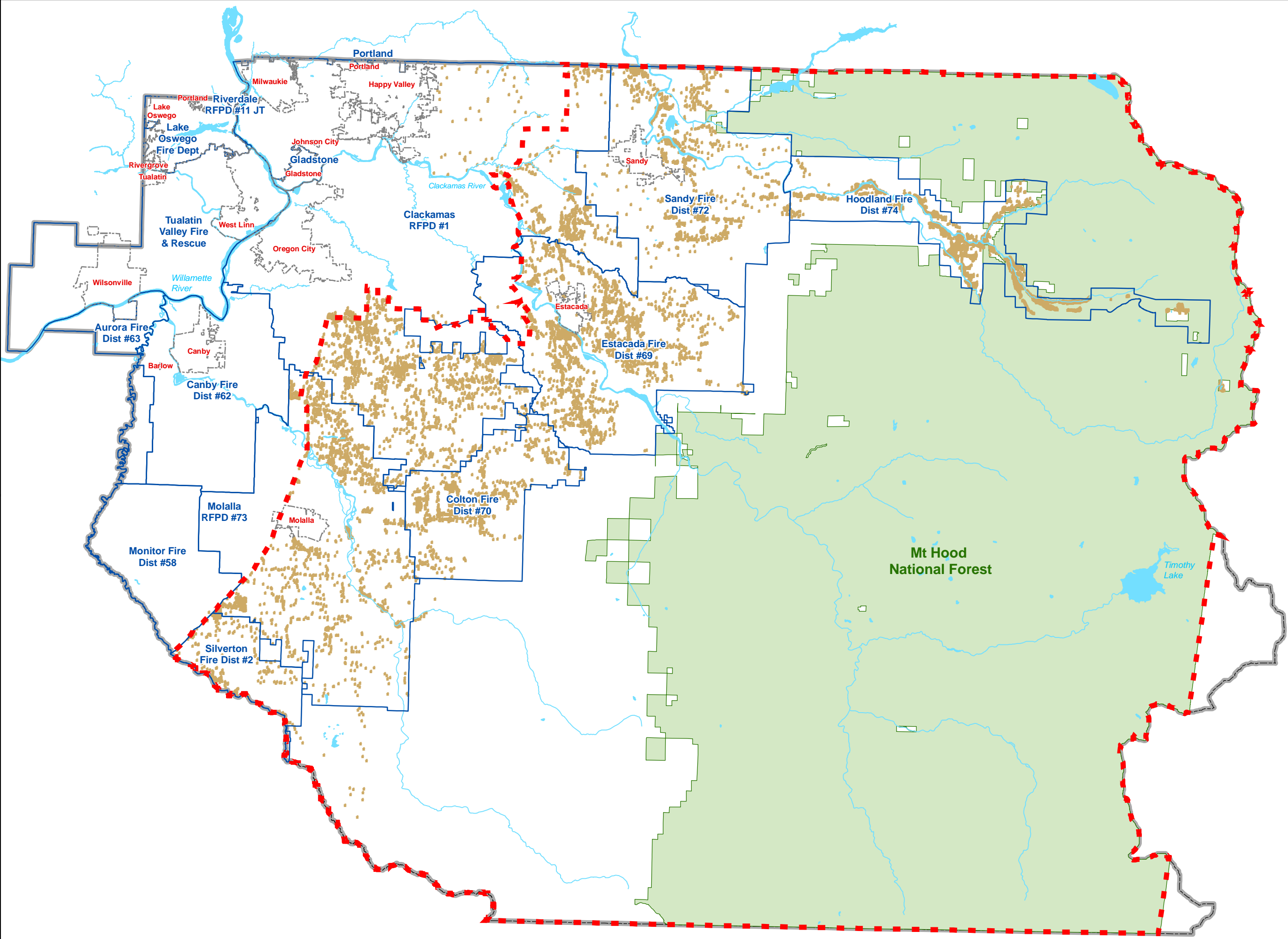
### **Structural Ignitability Action Items**

In order to effectively reduce structural ignitability, there must be coordination and communication between fire professionals and regulatory agencies including the State Fire Marshal’s Office, the Clackamas County Land Use Planning Division and the Clackamas County Building Division. The 2012 CWPP included a series of Structural Ignitability Action Items designed to provide direction and facilitate improved coordination among these agencies. Since 2012, a great deal of progress has been made to strengthen these relationships, which has resulted in more effective implementation of the Oregon Fire Code. For a complete listing of progress made since 2012, please see Table.1-1. CWPP 2012 Action Plan. The 2017 CWPP Update process identified the following priorities for implementation:

- 1) Identify a DTD representative for the WFPEC.
- 2) Improve coordination with Rural Fire Agencies.
- 3) Integrate WUI into Plan Map and include a public outreach strategy.

### **Data Collection and Assessment of Structural Ignitability (Map #7)**

In 2005, ODF used Title III funds to purchase Global Positioning System (GPS) units equipped with structural triage software in an effort to improve the mapping of structures and other features important for wildland firefighting within the ODF Protection District. Over 10,000 homes have been assessed. In 2016 ODF acquired new GPS units, and continues the ongoing effort of improving structural triage data.

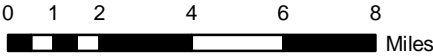
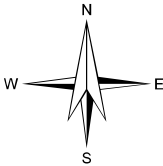


**Clackamas County  
Structural Triage  
Inventory  
2017**

- Triaged Structures since 2004
- Fire Districts
- Oregon Department of Forestry
- Mt Hood National Forest
- City Boundaries

Structural triage data was captured by multiple fire agencies and Clackamas County from 2004-2011. ODF and others used GPS units equipped with structural triage software to improve the mapping of structures and other features important for wildland firefighting predominantly within the ODF Protection District. Over 10,000 homes have been assessed. This structure data needs to be revisited. Only the boundary data was updated in 2017.

**Map #7**



**GEOGRAPHIC INFORMATION SYSTEMS**

DEPARTMENT OF INFORMATION SERVICES/GEOGRAPHIC INFORMATION SYSTEMS  
121 LIBRARY COURT  
OREGON CITY, OREGON 97045

The information on this map was derived from digital databases from Clackamas County's GIS. Care was taken in the creation of this map but is provided "as is". Clackamas County cannot accept any responsibility for any errors, omissions, or positional accuracy, and therefore, there are no warranties which accompany this product. Although information from Land Surveys may have been used in the creation of this product, in no way does this product represent or constitute a Land Survey. Users are cautioned to field verify information on this product before making any decisions.