

EROSION PREVENTION AND SEDIMENT CONTROL PERMIT GUIDE

For Single Family Residential

(A) Erosion Prevention & Sedimentation Control Plan (Provide 2 copies)

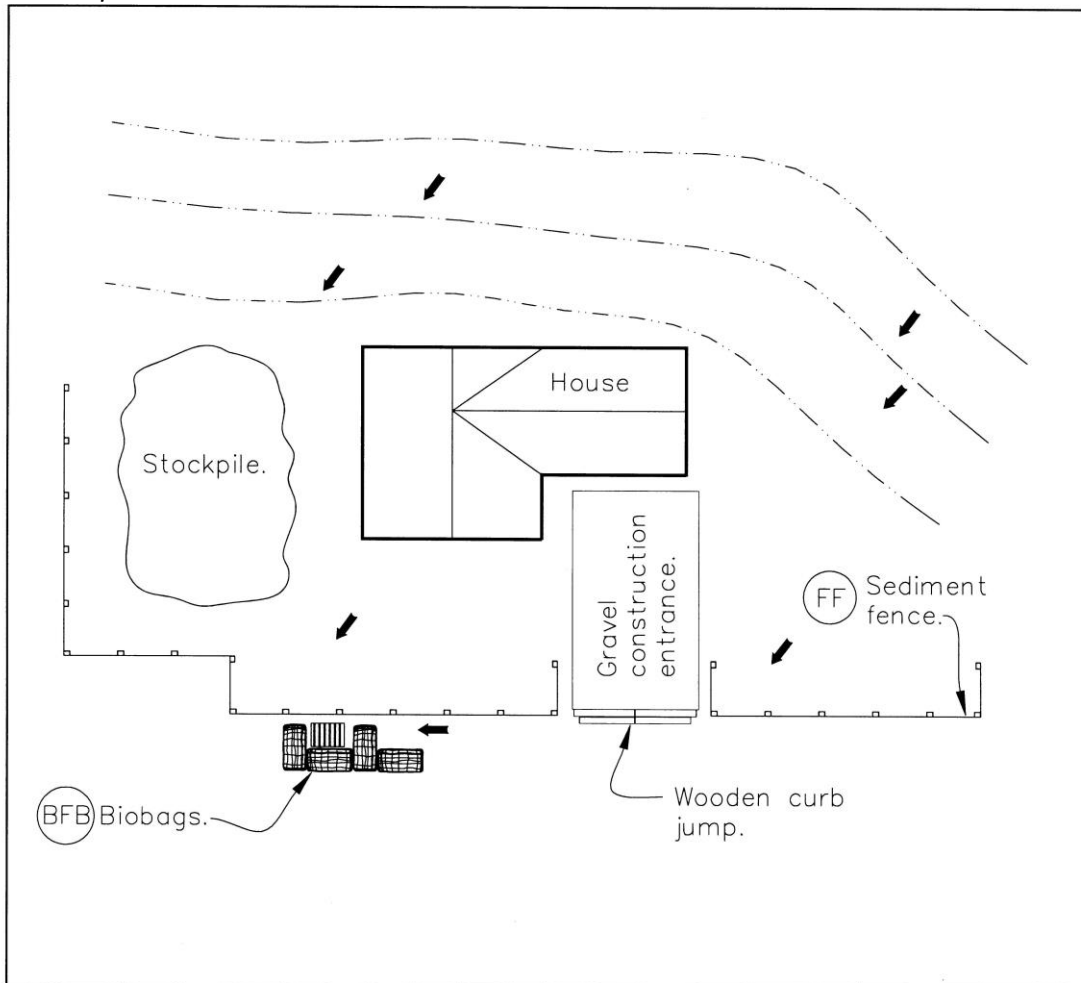
Refer to current WES *Erosion Prevention and Sediment Control Planning and Design Manual* for additional information:

- Gravel Construction Entrance Section 4.3.2
- Inlet Protection Section 4.3.5
- Temporary Sediment Fence Section 4.3.10
- Pollution Prevention/Const. Debris Section 5

Wet Weather measures (Oct 1st – May 31st)

- Straw Mulch Covering (exposed soil) Section 4.1.4
- Stockpile protection Section 4.1.7

Example Plan



Construction Site

(B) Maintenance Plan

EROSION CONTROL MAINTENANCE PLAN (Provide 2 copies)

Maintenance measures required (Initial applicable measures)

_____ Gravel construction entrance

Maintain a minimum depth of 8 inches of gravel. Cut curb or use wooden curb jump.

_____ Temporary sediment fence or alternate measures

Inspect daily when runoff is occurring. Clean sediment build up daily during prolonged rainfall and when accumulation is 2" or greater behind bio-bags or other similar barriers. Sediment from behind sediment fence must be removed when it reaches 1/3 the height of the above ground portion of fence.

_____ Stormdrain/Inlet protection

Storm drain inserts or alternate measures. Remove debris when accumulation is 2" or greater behind bio-bags or other similar barriers. Empty inserts when full and replace as needed.

_____ Exposed soils covered during wet weather season

Soils exposed for 14 days or more must be covered (Oct 1 – May 31).

_____ Provide area for cement trucks and concrete workers to clean their equipment

Cleaning and washing out cement trucks, equipment or tools in (or where it can reach) street areas, catch basins or drainage ways is a violation and not allowed.

_____ Provide area for disposal and storage of construction debris

Designate and use an area on the site to contain construction debris and protect it from rain and runoff. Pollutants such as, but not limited to, fuels, lubricants, paints, adhesives, drywall mud, raw sewage and other harmful materials shall not be discharged into rivers, wetlands, streams, impoundments, undisturbed buffers or any storm drainage system, or at such proximity that the pollutants flow to these watercourses.