

Stafford Road: Pattulo Way to Rosemont Road



Improving traffic safety and flow for all

Stafford Hamlet

Nov. 8, 2022

Schedule Update



- **Aug.-Sept. 2021:** Public feedback on intersection improvement options at virtual open house
- **January 2022:** 60% design documents completed, reflect public input
- **Summer 2022-23:** Refine design, utility coordination with PGE and Water Environment Services
- **Now-2023:** Begin right of way phase, consultant to coordinate with impacted property owners
- **2024-25:** Construction including utility relocation and road work

What we'll be doing



Improve safety and capacity

Realign Johnson Road

- Reduce steep grades on Johnson, eliminate road skew and increase sight distance
- Dedicated southbound left-turn lane
- Right-in, right-out (no left turn onto Stafford Road)

Construct roundabout at Childs Road

- Increase intersection safety
- Replace culvert with fish-friendly culvert

What we'll be doing: Stafford bike lanes



Add 6-ft paved bike lanes between Pattulo Way and Rosemont Road

- Widening primarily east side of road due to proximity to Pecan Creek
- Symmetrical widening north of Childs Road
- Steep cut slopes on east side; guardrail on west side
- Improved cross slope (super elevation) of roadway for a smoother ride

Traffic Impacts During Construction



Two-season construction

- Complexity of project
- Utility pole relocation
- Constrained corridor
- Maximize road access during construction

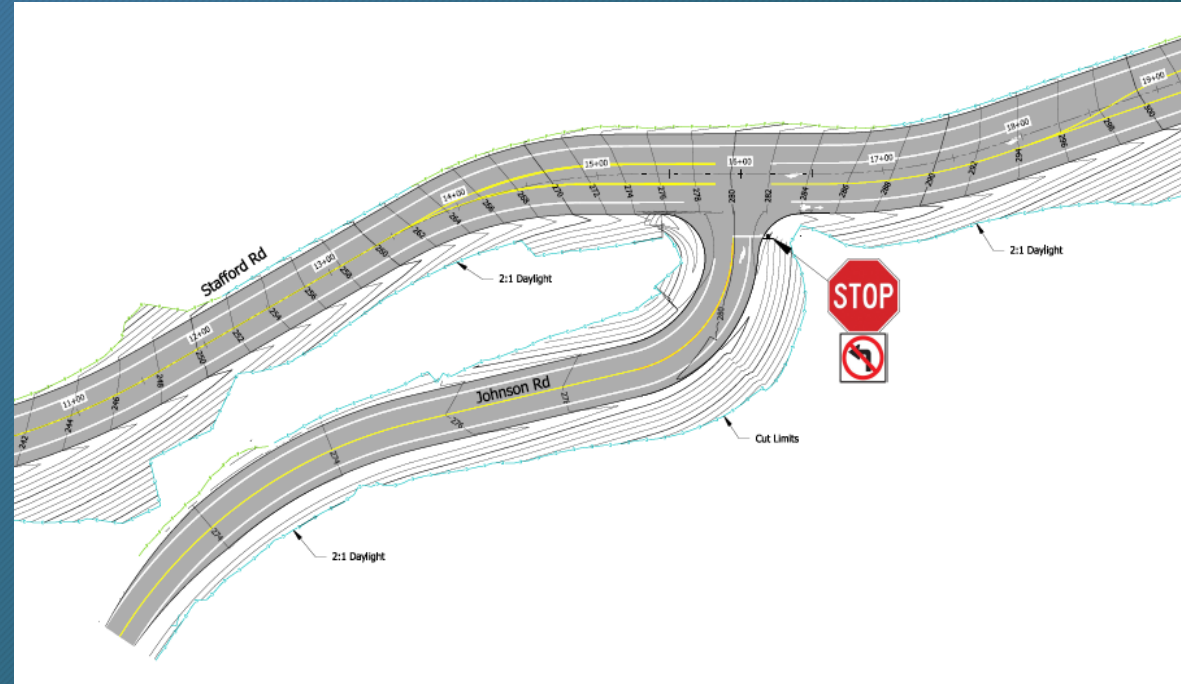


Traffic Impacts During Construction



Hypothetical first season:

- Closure of Childs Road and Johnson Road
- Replace culvert
- Grading and realignment
- Temporary Street Connections
- Utility pole relocation

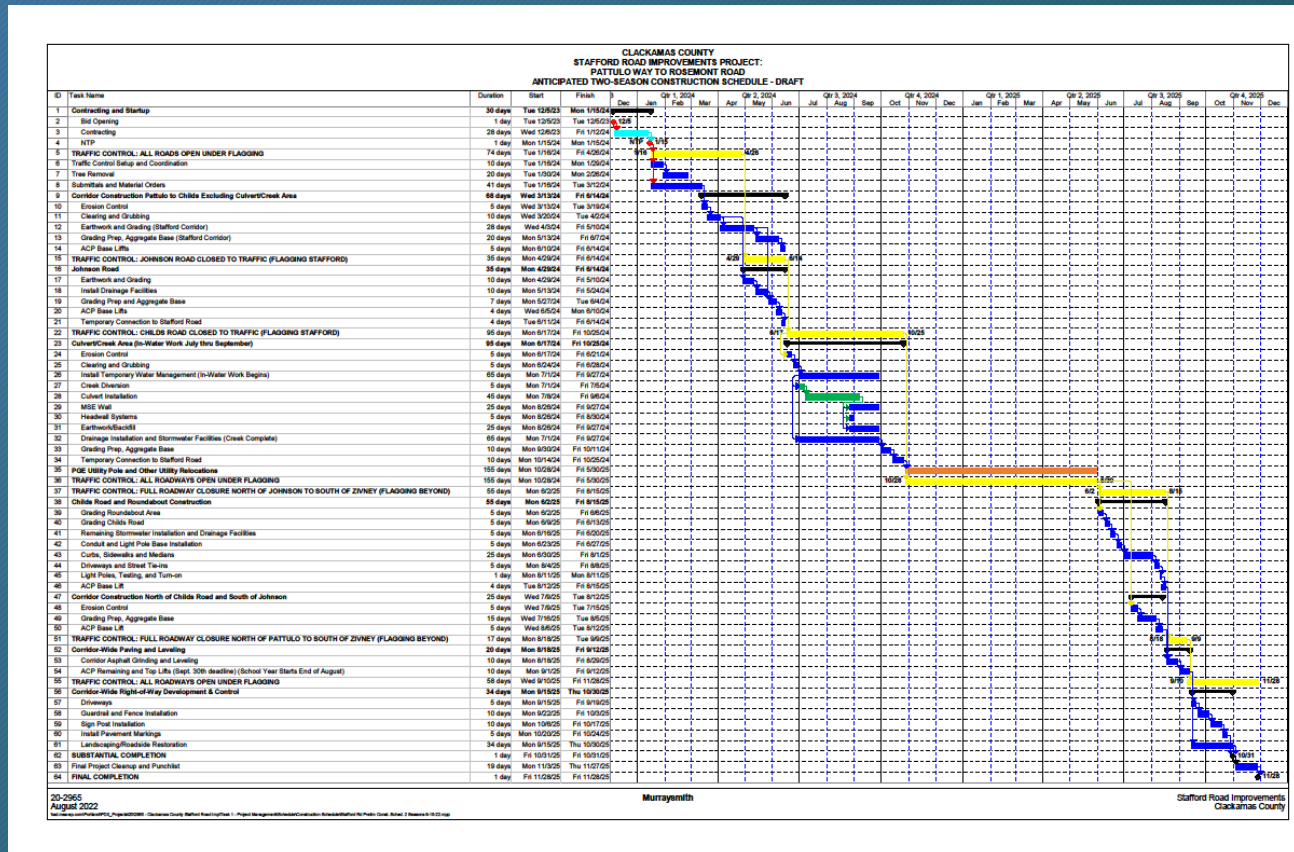


Traffic Impacts During Construction



Hypothetical second season:

- Closure of Stafford Road between Johnson Road and Zivney Lane
- Construct roundabout
- Road paving
- Substantial completion expected by end of 2025



You might like to know that we...



1. Eliminated driveway for Stevens Farmstead Park west of Stafford/Childs
2. Included future Lake Oswego developments (i.e., pool, rec. center at upgraded golf course, Luscher Farm in city limits) in traffic forecasts for roundabout configuration
3. Are analyzing construction staging to balance:
 - safety of travelers
 - length of construction time
 - accessibility
 - feasibility of construction under traffic

Community outreach



We will share information...

- Website
- Updates at Hamlet/CPO meetings
- Updates on social media
- Email interested parties
- Mail notices to area residents and stakeholders
- Open house(s)
- Contacts with property owners

We ask you to...

- Join the interested parties list
- Contact us with questions and concerns
- Spread the word to others
- Let us know what's working well and what isn't

Funding: \$12.6 million



1. Community Road Fund: \$8.2 million

Projects to increase safety, relieve congestion and maintain local roads

- \$30/year vehicle registration fee
- Consistent source of local, countywide revenue to complete projects most important to our residents and businesses
- Can only be used for road projects in Clackamas County

2. System Development Charges: \$4.4 million

Nearby CRF projects

- Congestion:
 - Barlow Road Intersections Improvement Study (2022)
 - Canby-Marquam Hwy at Lone Elder Road Intersection Improvements (2023)
- Paving:
 - Oak Grove: McLoughlin, Arista and Webster areas (2022)
 - Oatfield: Theissen area (2021)
 - East Canby area (TBD)

Thank you!



Stafford Road: Pattulo Way to Rosemont Road

www.clackamas.us/engineering/st-rd-improvements

Jonathan Hangartner, PE, *Project Manager*, 971-804-2825 jhangartner@clackamas.us

