

Sunrise Corridor Community Visioning

Steering Committee Meeting #1

January 31, 2024



Clackamas County



Happy Valley



Metro



ODOT



Meeting logistics

- The meeting will be broadcast via Zoom. Public participants will be able to listen to meeting content and participate in small group discussions.
- We'll need to have zoom attendees muted.
- If you have comments, please add them in the chat.



Project Video

<https://vimeo.com/899358994>



Land Acknowledgement

There are many Indigenous communities that have a historical, cultural and spiritual connection to what is now Clackamas County. The Willamette Valley and surrounding areas - from the mountain range to the ocean – were honored by Indigenous groups for its diversity, beauty, and abundance. This is what drew people here for generations prior to colonization. We will never be able to name every tribe that visited or lived upon this land because these communities frequently traveled for trade and other reasons. The Indigenous people lived, traded and navigated along great rivers and tributaries presently named the Clackamas, Molalla, Pudding, Sandy, and Willamette. Many of the original inhabitants of this land died from disease, brought on by early European settlers and French fur trappers. Those that survived fatal diseases and other conflicts were forcibly removed and relocated by the United States Government because of the land's value. Today, descendants live on, carrying on traditions and cultures, honoring their ancestors.

We honor the Native American people of Clackamas County as a vibrant, foundational and integral part of our community here today. We respectfully acknowledge Wy'east, also known as Mount Hood, and Hyas Tyee Tumwata, also known as Willamette Falls, as sacred sites for many Native Americans. We thank those who have connection to this land and serve as stewards, working to ensure our ecosystem stays balanced and healthy.

Acknowledging the original people of the land is a simple, powerful practice that demonstrates respect by making Indigenous people's history and culture visible. It is also a small step along the path toward reconciliation and repair. Please join us in taking this opportunity to thank and honor the original caretakers of this land.



Welcome & Introductions



Agenda

- Welcome
- Introductions
- Project Overview
 - Where we've been & Where we're going
- Committee Charter
- Area Overview
 - Get to know the area
- Group discussions
- Your hopes for this project
- Public comments
- Next steps

Today's Objectives:

- *Get to know each other*
- *Learn about the project*
- *Talk and share your experience in the area*
- *Share hopes for the project*



Introductions

Committee members (in-person and online)

- Share your name (and pronouns used)
- Your organization or interest in the Sunrise Corridor Community

Project team members

- Share your name (and pronouns used)
- Your organization



Meeting Agreements

Ground rules

- Have an open mind.
- Come prepared to participate.
- Listen to and recognize the diverse concerns and interests of other members.
- Share discussion time, encouraging everyone to participate fully.
- One person speaks at a time.
- Ask questions of each other to gain clarity and understanding.
- Avoid speaking on behalf of others or the group.
- Treat each other with mutual respect.

Expectations

- Patience with today's tech.
- Our meeting will start and end on time.
- Members and facilitator will work to hold to the agenda.
- If a topic is not on the agenda, we'll put it on a list for future discussion.

We'll check in on these before the next meeting.

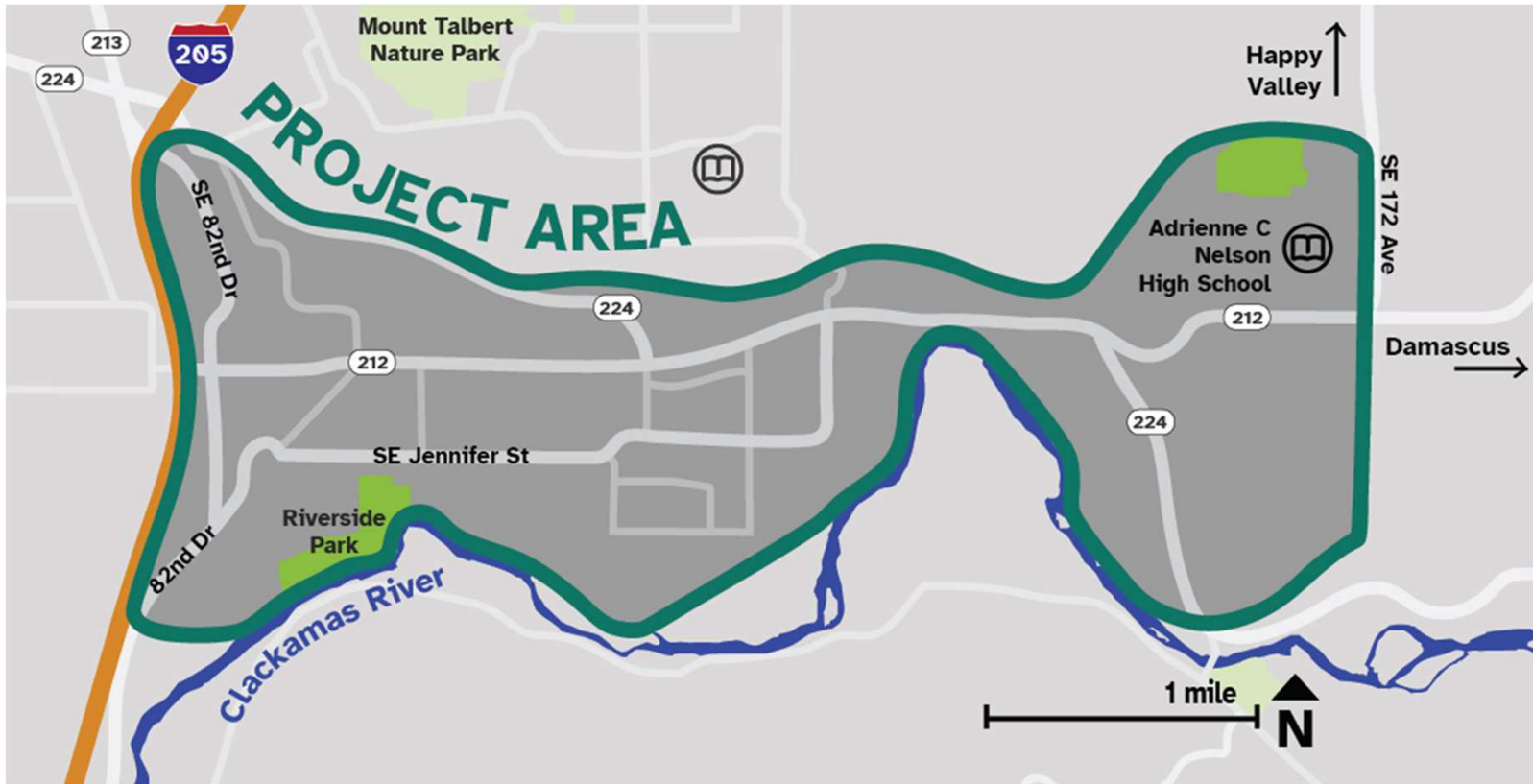


Project Overview

Where we've been and where we're going



Project Area



History of the Corridor Community

- Before 1800, forests covered most of the watershed and streams supported large populations of salmon, steelhead, and other fish.
- Settled lands in the visioning area were largely farmland, often subsistence farming, through the 1940s, until roads open the land to new development and industry.



View of the Clackamas River.



Chinook Salmon



Aerial Timelapse of Sunrise Corridor Community from 1937-2000



Cultural History

Prehistory

Before 18th century

Native American tribes, including the Clackamas, Multnomah, Wasco, Molalla, and Kalapuya inhabit the region now known as Clackamas County.

American Colonization

Early to mid 19th century

The establishment of fur trading posts and settlements by Euro-American colonizers leads to increased interactions and trade with Native American tribes in the region.

Black Exclusion Laws

Mid to late 19th century

The racial makeup of Oregon has been largely influenced by a series of exclusion laws passed in the mid-1800s. Exclusion laws made it illegal for free Black people to settle in Oregon and were successful in discouraging Black people from moving to Oregon during the Great Migration.

Native American Assimilation

Late 19th century

The U.S. government enacts policies aimed at assimilating Native Americans into mainstream American society, leading to the forced removal of Native American children to boarding schools and other efforts to suppress native languages and cultures.

Forced Ejection of Chinese Settlers

Late 19th century

A broad wave of anti-Chinese sentiment following the completion of the Transcontinental Railroad. As a result of forced ejection, violence, and federally mandated exclusion, Oregon's Cantonese population declined from about 10,390 in 1900 to 2,102 in 1950.

Present Day

21st century

Native American Tribes, and Black and Chinese communities of the Clackamas County region continue to preserve and revitalize their languages, cultures, and traditions.

Exploration & Early Contact

18th century

Initial contact with Native American tribes occurs during this period. European explorers, traders, and fur trappers from Spain, Great Britain, France, and the United States, explore the Pacific Northwest. Missionaries come to Oregon. Disease devastates the Pacific Northwest. New towns established.

Treaties & Land Cessions

Mid to late 19th century

The U.S. government negotiates treaties with various tribes in the region, resulting in the cession of land and the forced removal of some tribes to reservations. These treaties significantly alter the tribal territories and way of life.

Chinese Exclusion Period

Mid to late 19th century

The number of Chinese in Oregon grew dramatically after the mid-1860s and would continue to increase to around 10,000 in 1900. The period of 1882 to 1943 is known as the Exclusion Period. During this time, both the United States federal government and the Oregon state government passed discriminatory laws that led to violence against and decline of Oregon's Chinese population.

Discrimination Against Black Settlers

Late 19th century

Despite the racist laws excluding Black people from living in Oregon, many Black American settlers still came to Clackamas County. Black people often arrived in Oregon City, the terminus of the Oregon trail and the territorial capitol. Many settlers later left due to the discrimination of Oregon's Black exclusion laws.

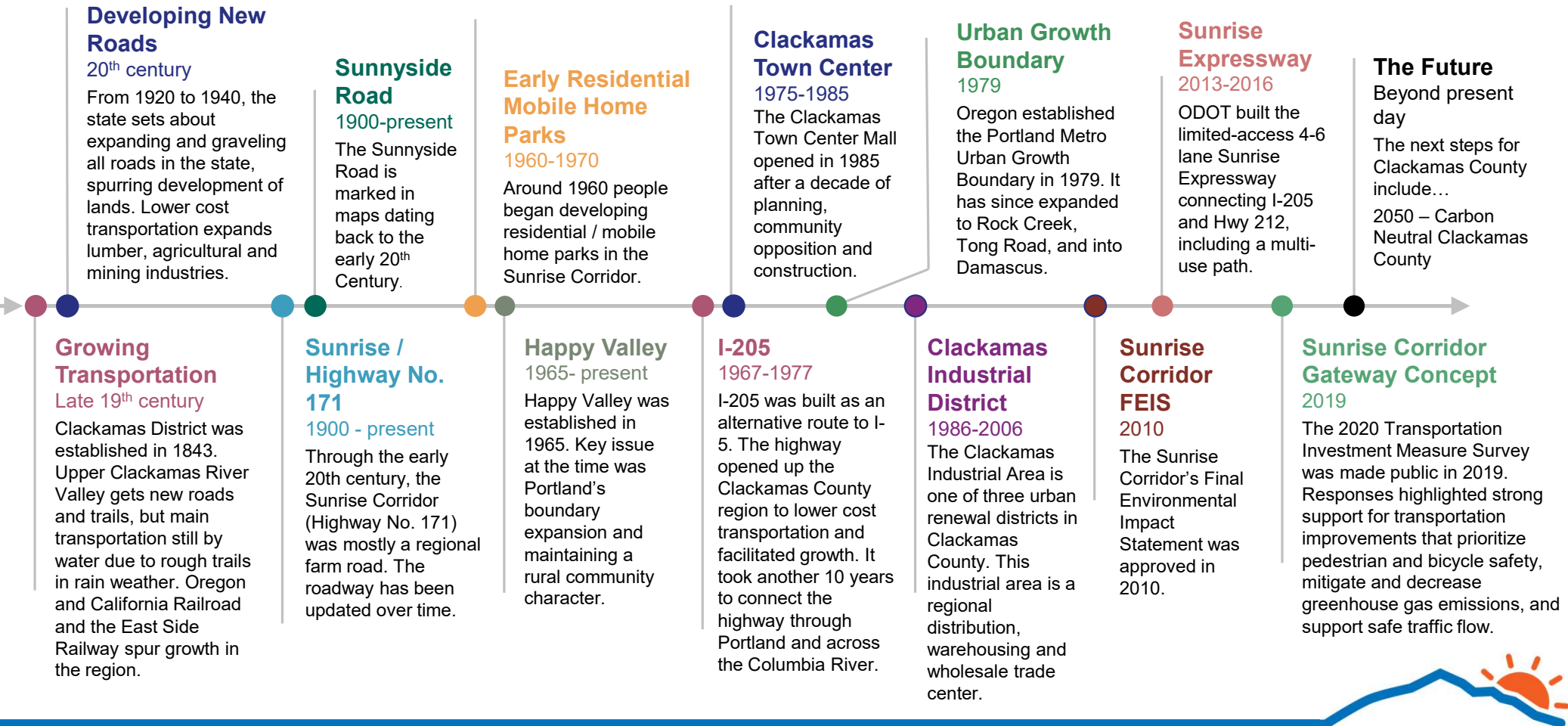
Results of the Termination Era

20th century

Native American tribes, and Black and Chinese communities in the Clackamas County region, like many others across the United States, experience challenges due to exclusion laws, cultural suppression, and economic difficulties.



Transportation and Economic History



Visioning Overview

This work will build meaningful partnerships with people who live, work and visit the area to develop an equitable, community-supported vision for the future of the Sunrise Corridor Community.

Visioning efforts will:

- Center community voices, cultural history, and identify community values.
- Analyze health impacts, economic opportunities, and accessible, safe infrastructure for the area within an equitable framework.
- Collaborate with partners at the City of Happy Valley, ODOT, and Metro to build momentum towards implementation of the vision.



Transportation Outcomes from Past Work

- The County and partner agencies recognize that previous studies didn't provide the right answer for the corridor and today's surrounding community.
- Future transportation outcomes need to learn from past work and collaborate with community members to:
 - Right-size infrastructure improvements
 - Focus on community needs
 - Provide equitable access



Sunrise Phase 1 construction event



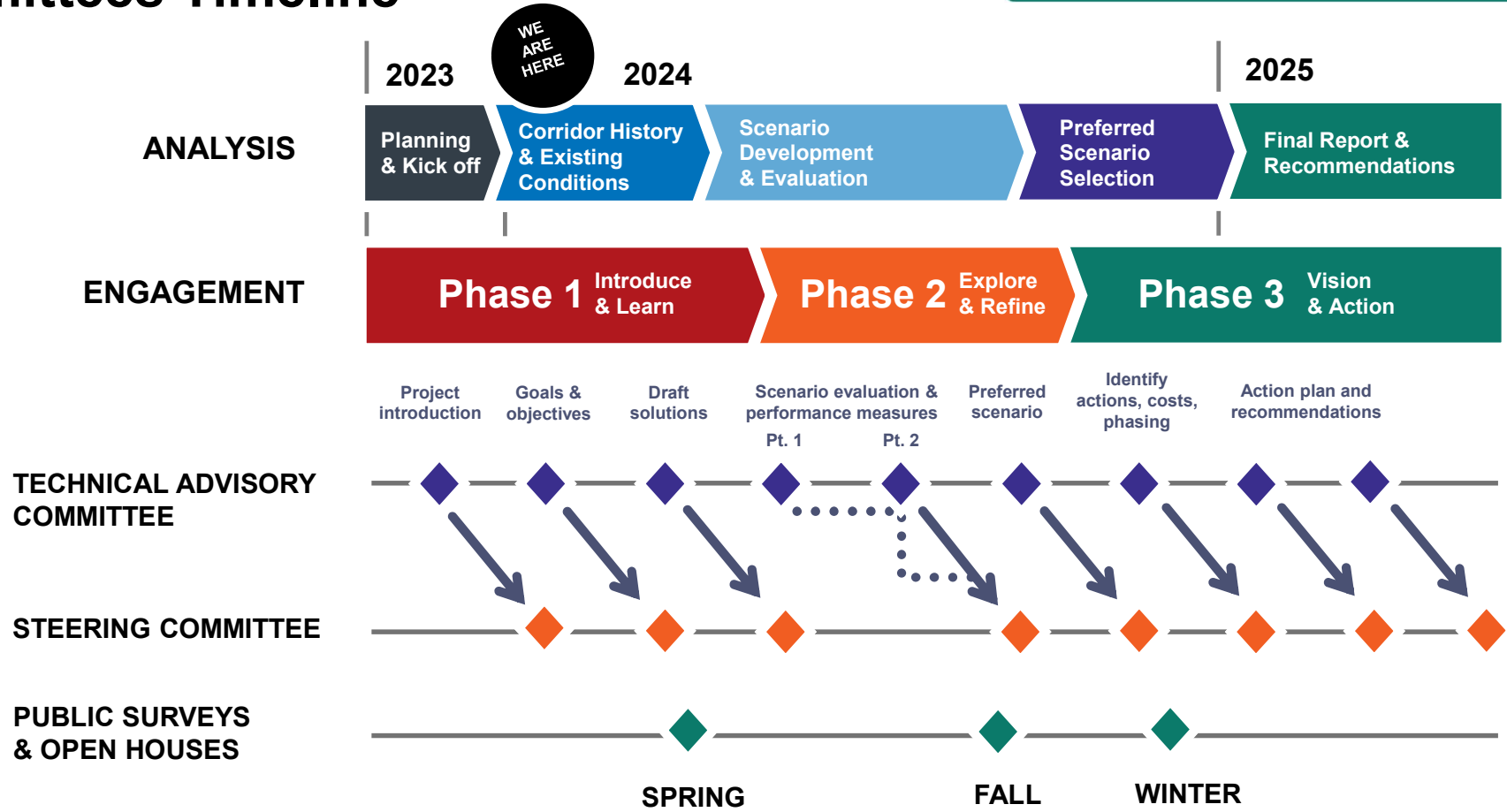
Themes

- Access & Accessibility
 - Access to multimodal facilities
- Anti-Displacement
- Climate & Environment
 - Resilience
 - Sustainability
- Economic Development
- Equitable Community Engagement
- Health
- Land Use & Housing
- Mobility & Safety
 - Multi-modal (transit, bike, pedestrian, all vehicles)
 - Highway
 - Safety crossings for highway and other modals access to the highway
- Livability
- Sense of Place
- Culture – Cohesion – Social Connections
- Partnerships – coordination and communication among entities
- Enhance community
- Reuse existing assets



Committees Timeline

Sunrise Corridor Community Visioning



Community Engagement: Introduction and Learning Phase

What	When	Purpose
Stakeholder conversations	Fall 2023 - Ongoing	Brief interviews with residents, employers, employees, and visitors to learn more about area history and how it works today.
Pop-up chats on Clackamas County Shuttle	January 25, 2024	Drop-in conversations scheduled throughout the area to meet with community members to learn more about their experiences.
First Steering Committee meeting	January 31, 2024	Introduce Steering Committee members to the project and next steps for key activities.
Equitable Engagement workshops	February 2024	Workshops to identify how equitable engagement can be integrated into the final vision and will include recommendations to guide future decision-making.
Pop-up chats with local businesses	February 2024	Drop-in conversations scheduled throughout the area to meet with businesses to learn more about their experiences.
Open house	Spring 2024	Learn more from the community about what's working well today and what can be improved in the future.
Online feedback survey	Spring 2024	Learn more from the community about what's working well today and what can be improved in the future.



Questions?



Draft Steering Committee Charter

- What is in the charter?
 - Purpose
 - Membership
 - Roles and responsibilities
 - Other procedures
- Take what you've learned today to review the draft charter
- Email your feedback by February 16; we'll finalize the charter with you at the next meeting.



Project Area Overview: Getting to Know the Area



Data collection, maps, and more

The technical team is collecting data and mapping existing conditions.

Topic areas include:

- Jobs and economy
- Land use and resources
- Housing and Community
- Community Health
- Mobility and Safety

The following is a preview of this work.

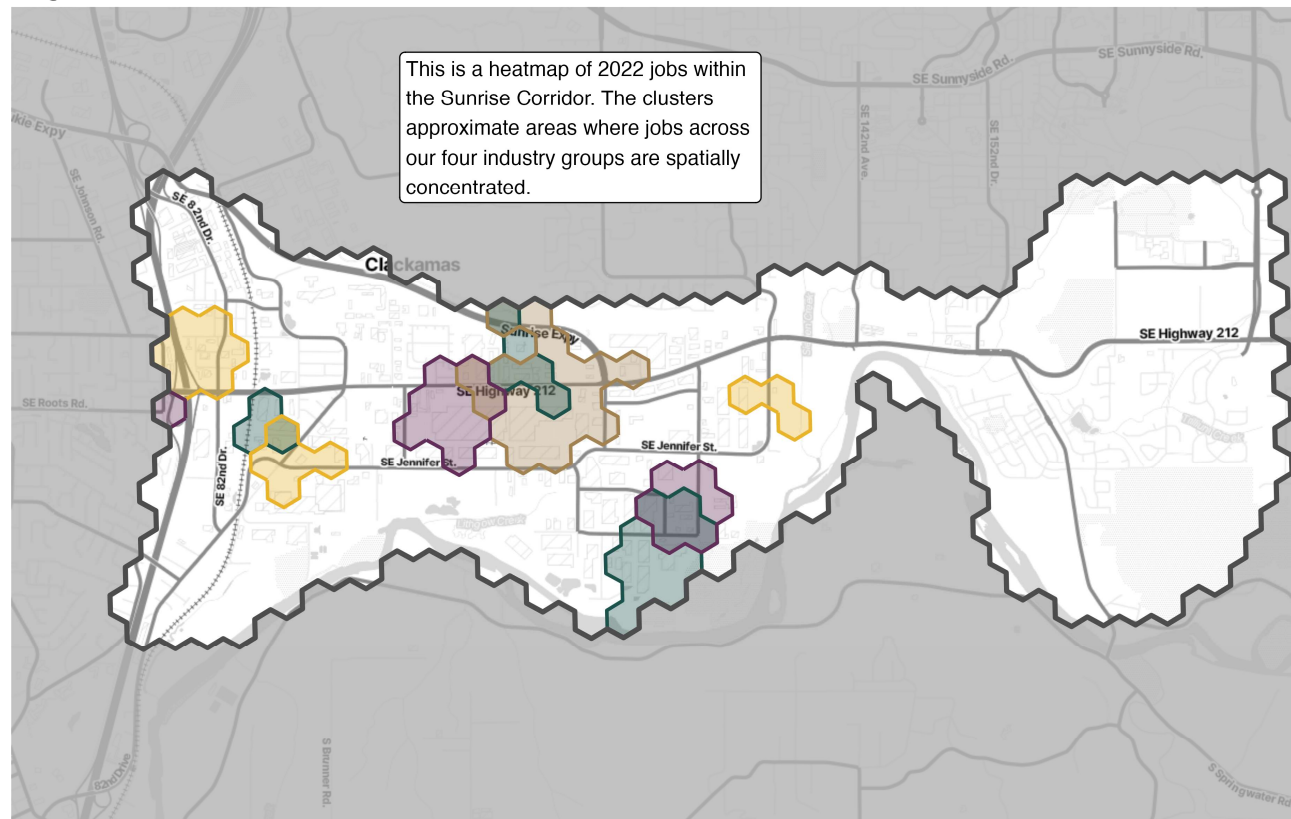
There will be more shared at the next meeting.



Jobs and Economy

Industrial areas have increased employment for the last 10 years.

- 14,000 jobs in the study area
- Study area and regional unemployment only 2%
- There are fewer professional and office employers in the area yet there has been growth in that area also.



Manufacturing Non-Production Industrial Professional and Office Trade



Community

Much of the project area is used for industrial lands and employment. There is a relatively small population living in the project area, though the population around the area is growing rapidly.

- Population growth higher surrounding study area (2011 to 2021)
 - Study area: **+40% population growth** 5,400 to 7,600 people
 - Happy Valley: **+80% population growth** 13,000 to 23,400
 - County, region, state: **~12% population growth**
- Race/ethnicity similar to county, region, and state
- Median household income up 53% over the last 10 years, however it is lower than surrounding communities.



Housing

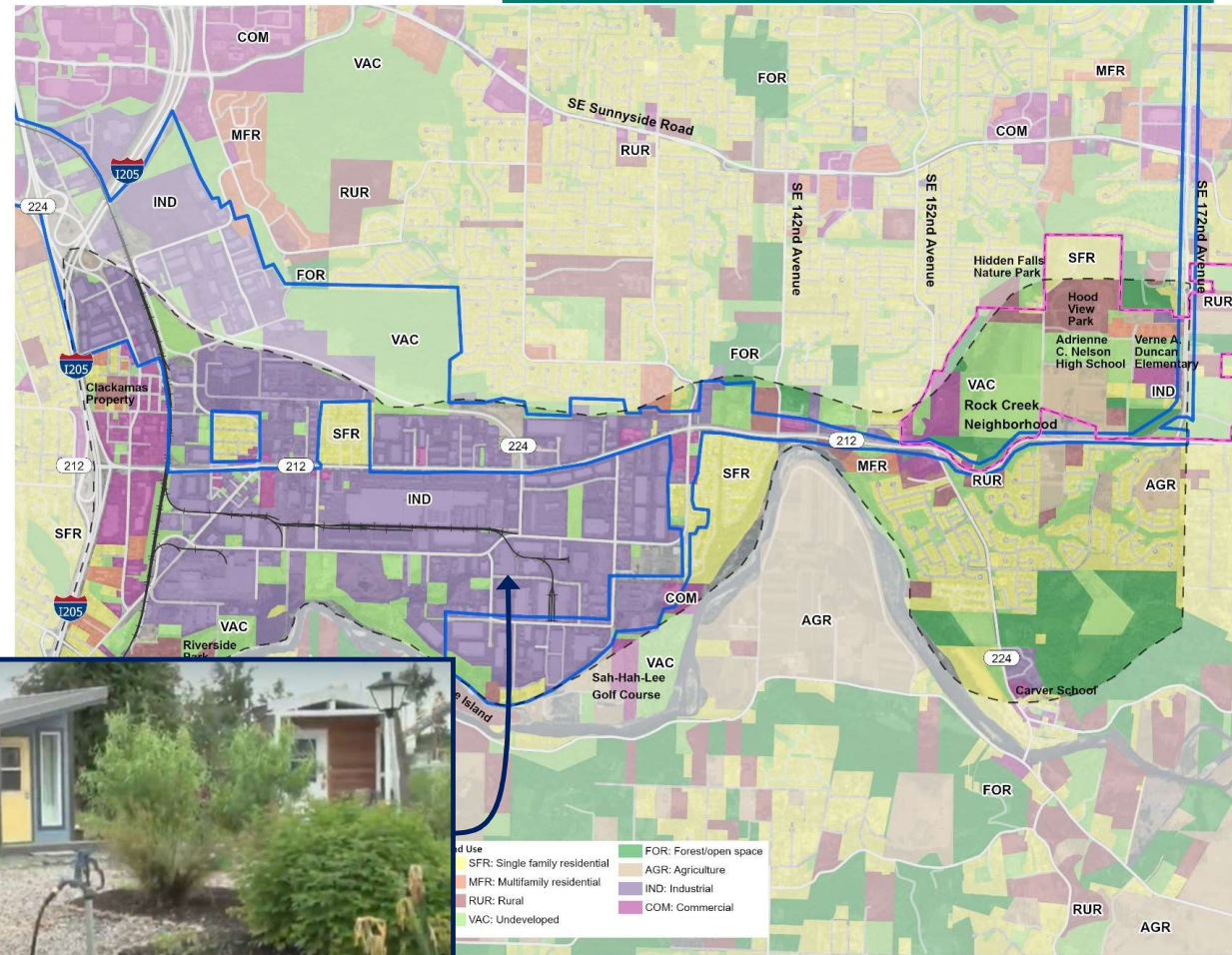
Relatively low amount of housing in the study area.

The housing available is more affordable than surrounding areas.

- Several manufactured home communities
- Newer housing developments east side of study area (single family/ town homes)
- Unique housing
 - a transitional residential community for veterans (15 units)



Sunrise Corridor Community Visioning



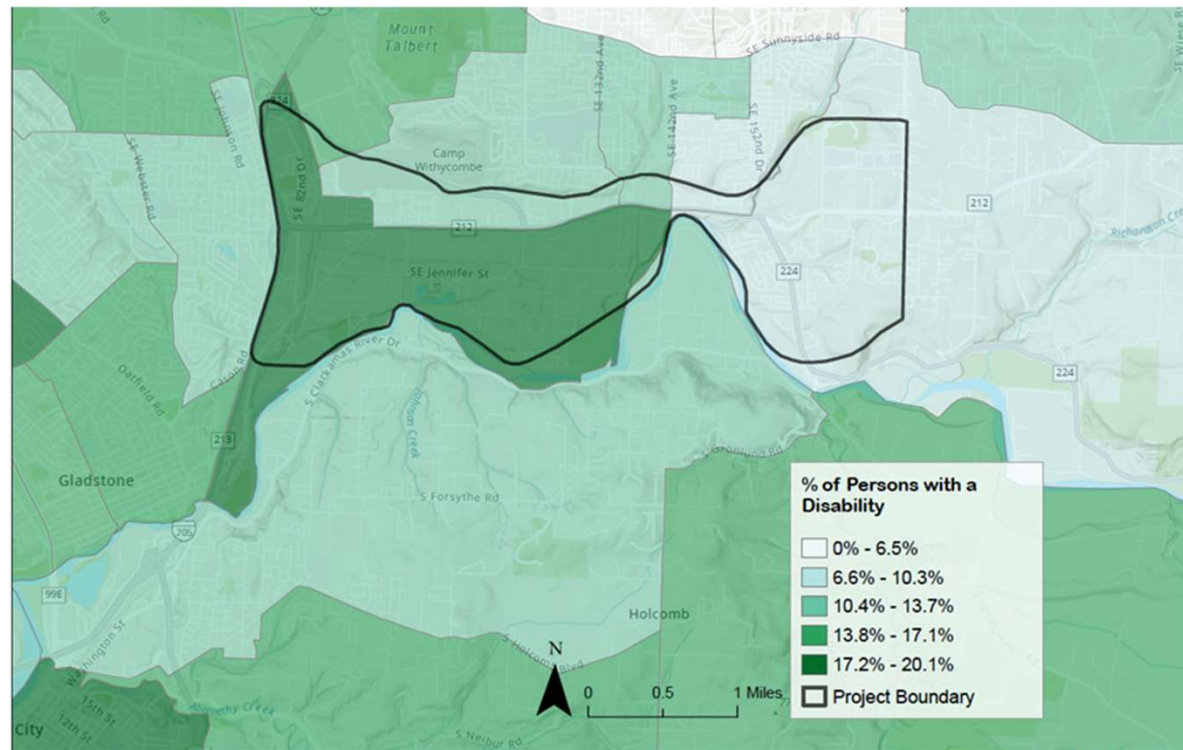
Community Health

The area has a higher percentage of people who are "transportation disadvantaged," meaning they have less access to transportation (not evenly distributed across area).

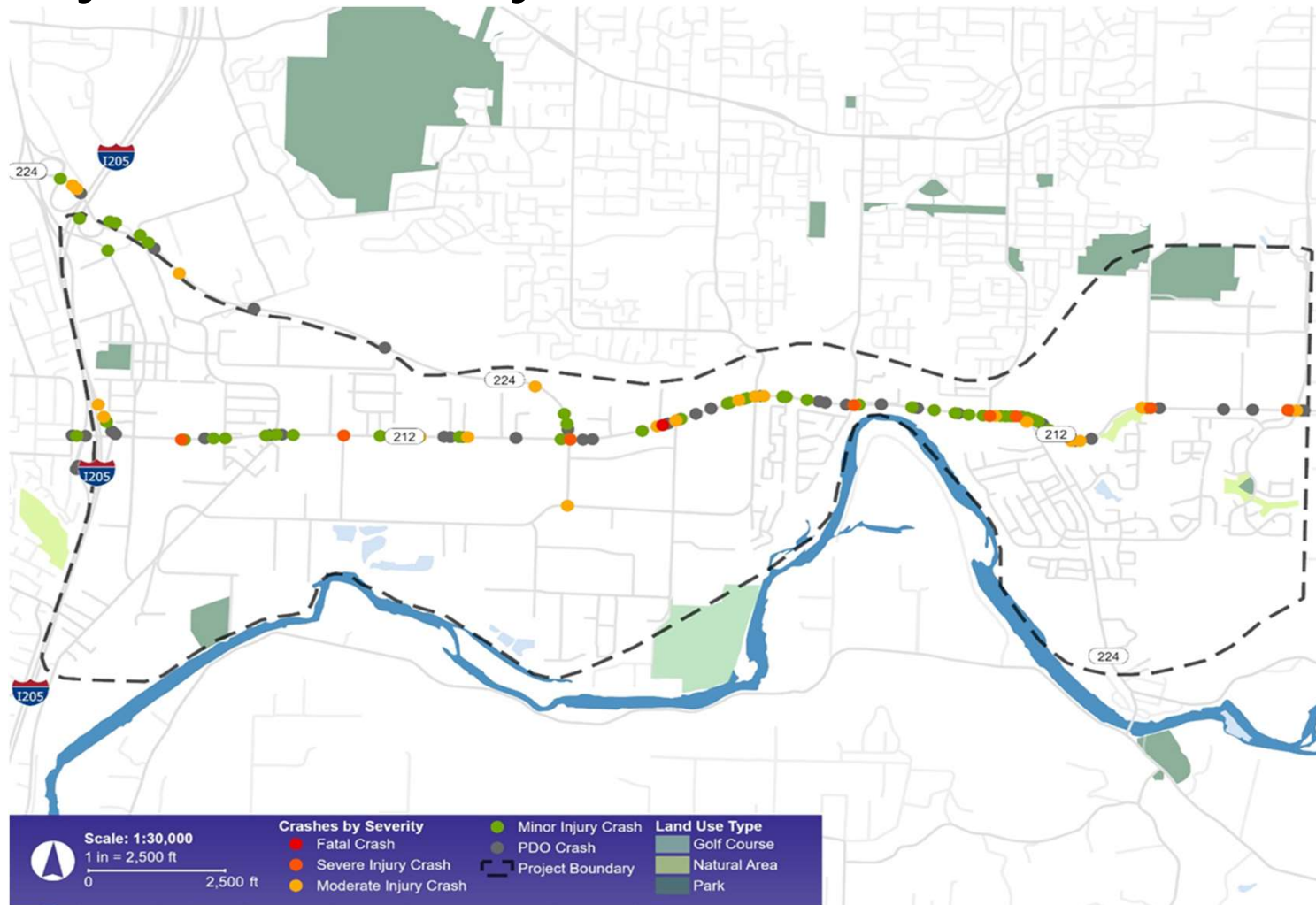
This can prevent access to health care, employment, education, shopping, social activities and other quality of life needs.

Transportation disadvantaged communities:

- Lower income communities
- Communities of color
- People without a car
- Seniors
- People with disabilities



Mobility and Safety



Share your Experience and Knowledge



Break-out discussion groups

What is working in the corridor?

What is not working in the corridor?

What specific issues need to be addressed in this visioning process?

Who is missing from the conversation that we need to reach out to?



Share your hopes



Share!

All committee members:

What is your hope for this project
or
for the corridor



Public Comment

Public attendees:

- Thank you for coming.
- Anything you'd like to share about the project or project area?

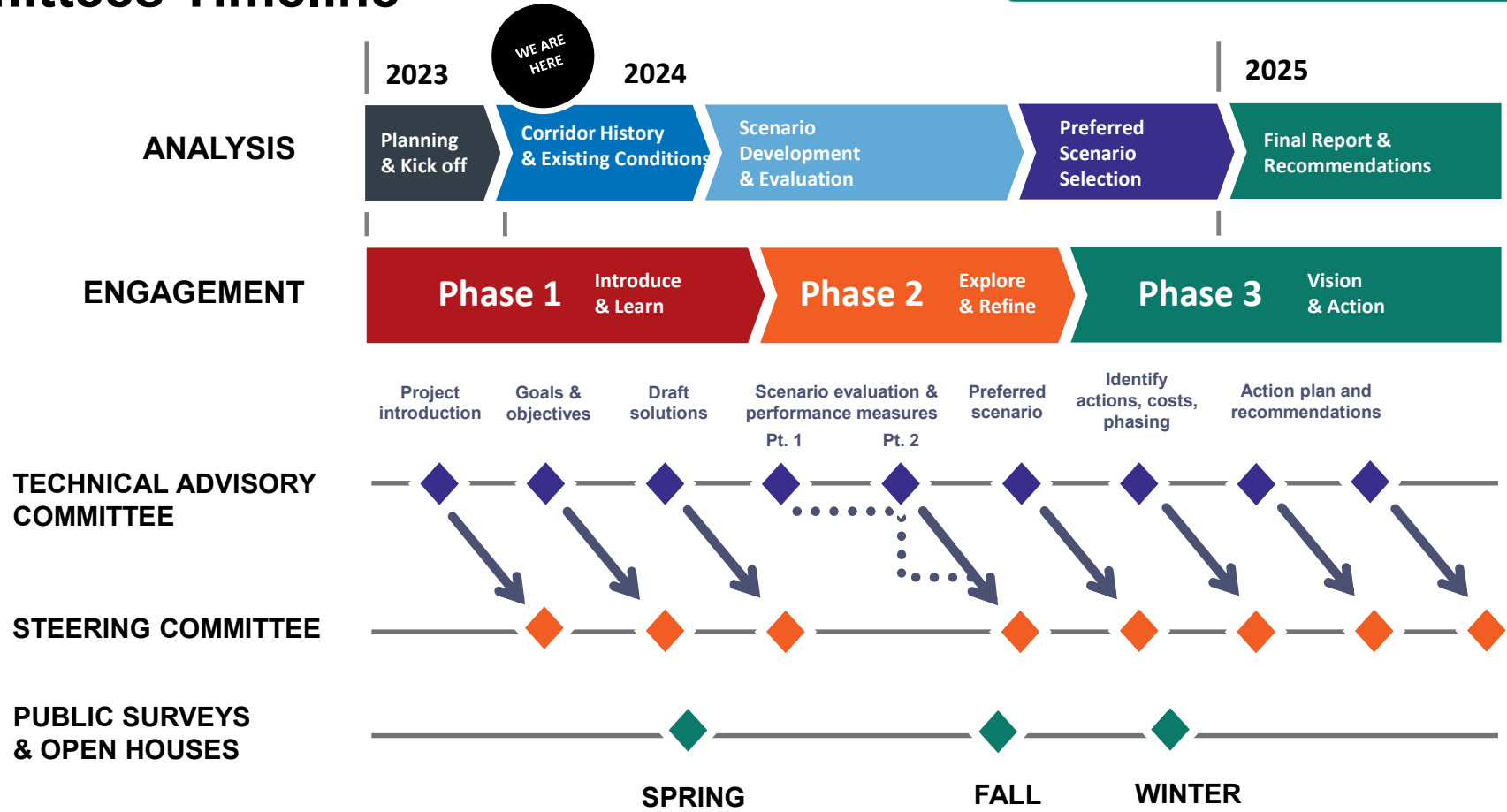


Next Steps



Committees Timeline

Sunrise Corridor Community Visioning



Next Steering Committee Meeting

Check schedules.

We would like to hold dates.

- March 20? (week before spring break)
- ~~April 29?~~ [at meeting corrected this to proposing May 29]

Virtual or hybrid? Thoughts?

If you have comments or feedback on Steering Committee Meetings please send them to kristen@jla.us.com





Thank you!

<http://www.clackamas.us/sunrise>



Clackamas County



Happy Valley



Metro



ODOT

