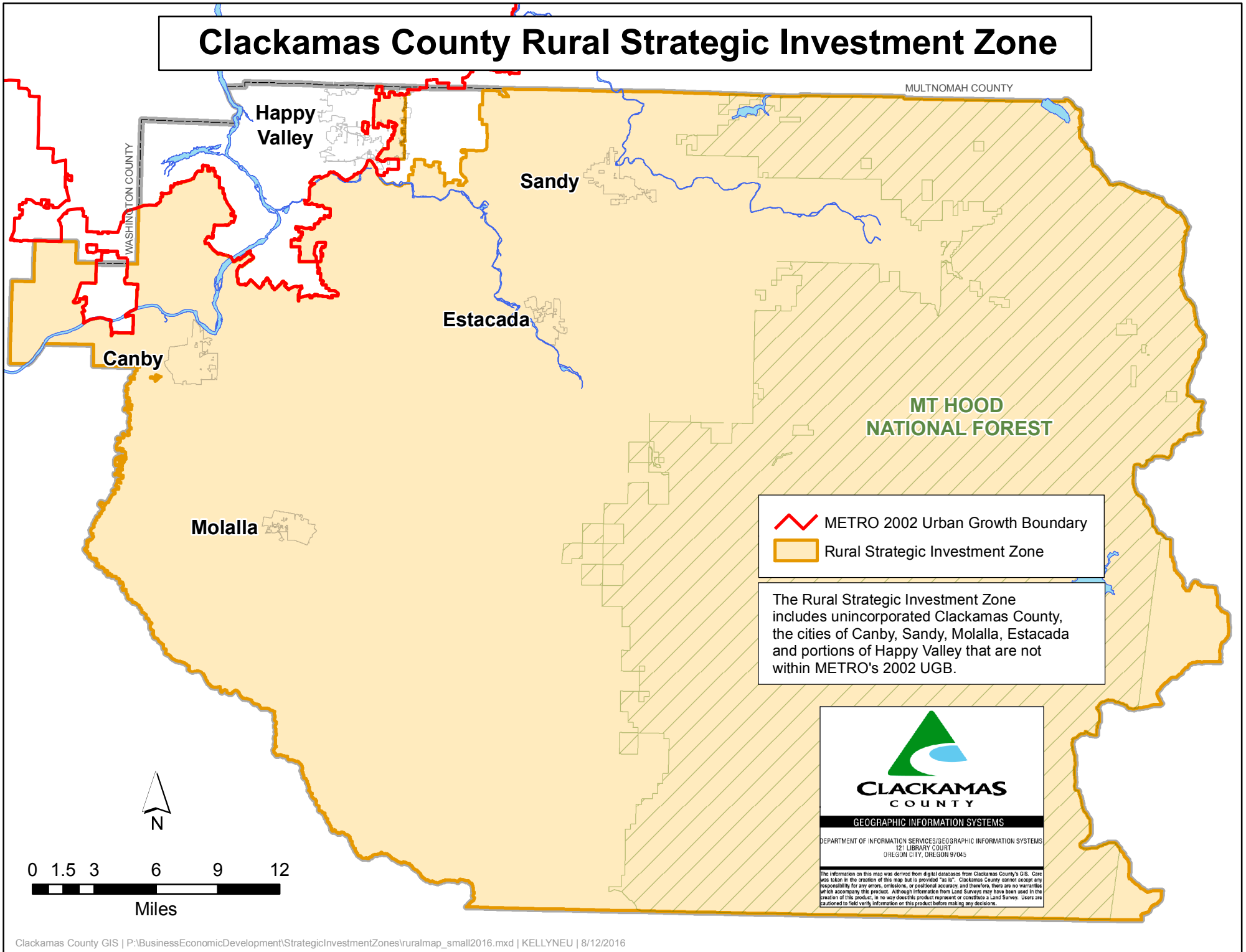





# Clackamas County Rural Strategic Investment Zone



-  METRO 2022 Urban Growth Boundary
-  Rural Strategic Investment Zone

The Rural Strategic Investment Zone includes unincorporated Clackamas County, the cities of Canby, Sandy, Molalla, Estacada and portions of Happy Valley that are not within METRO's 2002 UGB.



**CLACKAMAS COUNTY**  
 GEOGRAPHIC INFORMATION SYSTEMS  
 DEPARTMENT OF INFORMATION SERVICES/GEOGRAPHIC INFORMATION SYSTEMS  
 121 LIBRARY COURT  
 OREGON CITY, OREGON 97045

The information on this map was derived from digital databases from Clackamas County's GIS. Care was taken in the creation of this map but is provided "as is". Clackamas County cannot accept any responsibility for any errors, omissions, or positional accuracy, and therefore, there are no warranties which accompany this product. Although information from Land Surveys may have been used in the creation of this product, in no way does this product represent or constitute a Land Survey. Users are cautioned to field verify information on this product before making any decisions.

