

Snow Plow Routes

Winter 2022 / 2023

for Clackamas County
Transportation Maintenance

Plow Routes 2023

Plow Response Priority

- 1 - High
- 2 - Medium
- 3 - Low

PlowTurnaround_SnowPole_2020 Events

- Snow Plow Turnaround
- Snow Poles

Emergency Transportation Routes

- ★ ★ PRIMARY
- ● SECONDARY
- ○ ALTERNATE

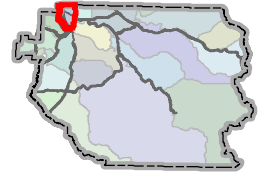
Stockpile Sites

- ▲ No Winter Sand
- ▲ Winter Sand
- ▲ Reporting Location

Response Zones

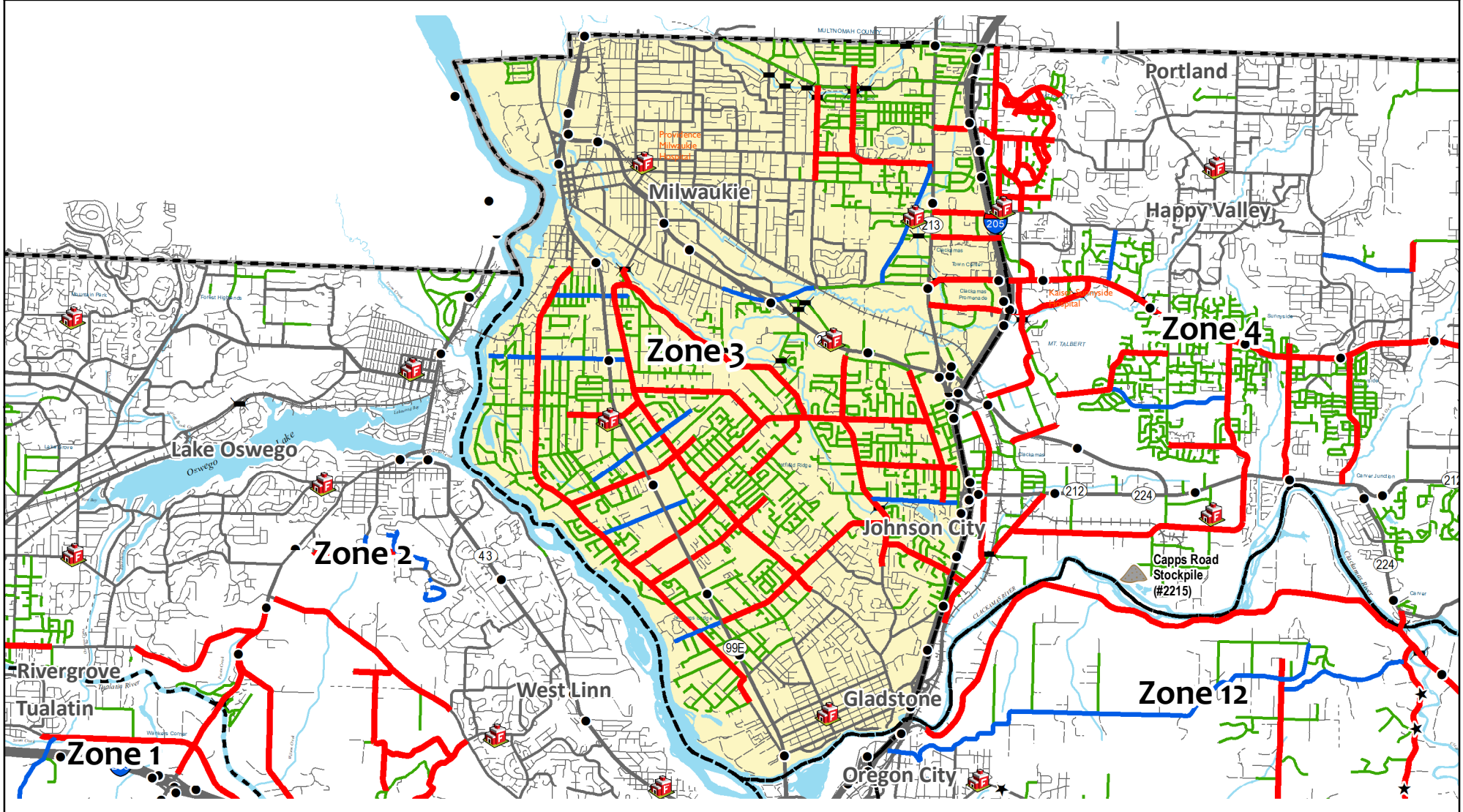
- Response Zones
- County Maintained Bridge
- 🚒 Fire Station

Response Zones



1 in = 1.16 miles

North - Zone 3



Snow Plow Routes

Winter 2022 / 2023

for Clackamas County
Transportation Maintenance

Plow Routes 2023

Plow Response Priority

- 1 - High
- 2 - Medium
- 3 - Low

PlowTurnaround_SnowPole_2020 Events

- Snow Plow Turnaround
- Snow Poles

Emergency Transportation Routes

- ★ ★ PRIMARY
- ● SECONDARY
- ○ ALTERNATE

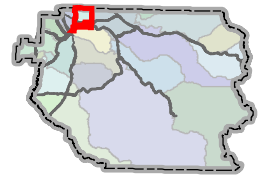
Stockpile Sites

- ▲ No Winter Sand
- ▲ Winter Sand
- ▲ Reporting Location

Response Zones

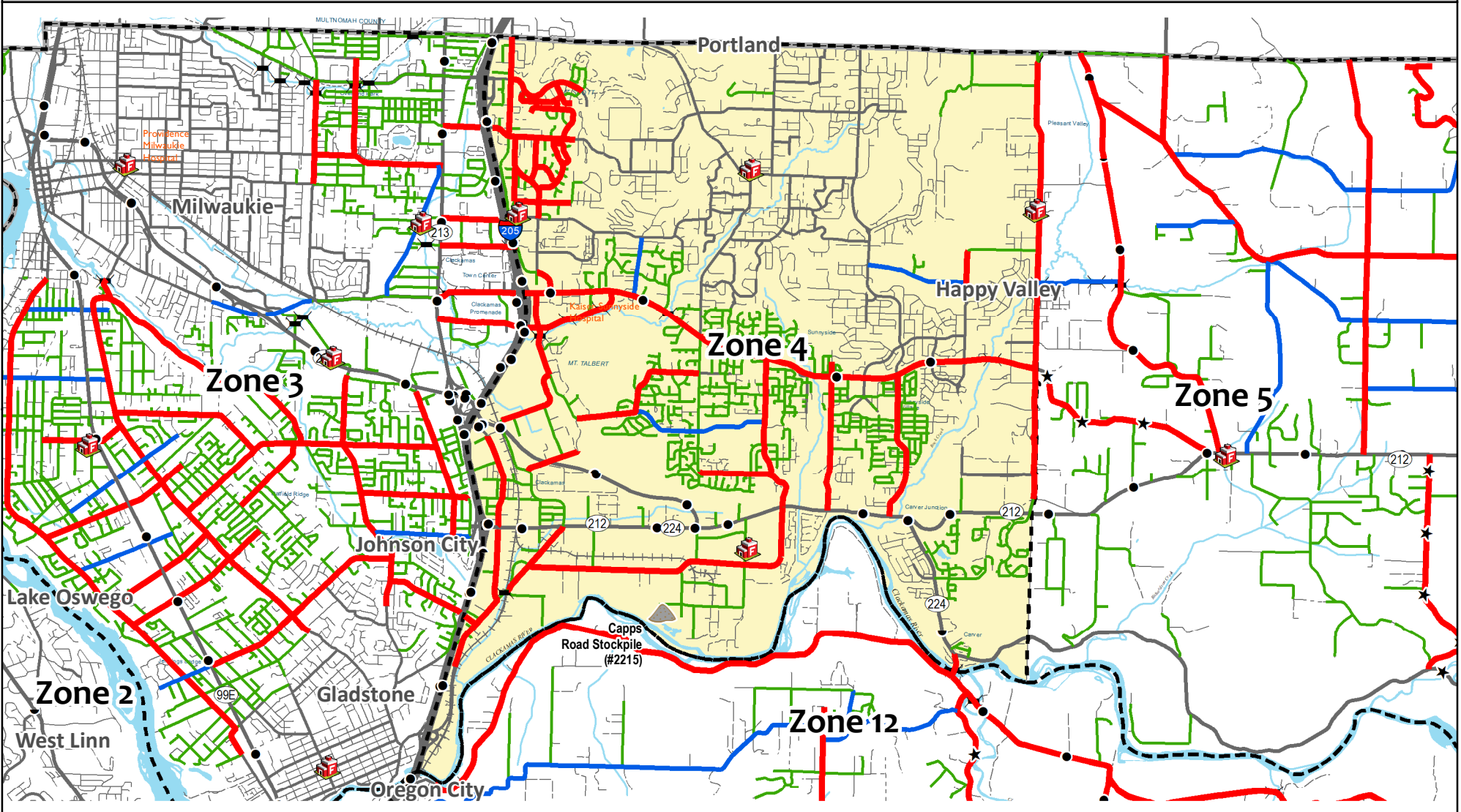
- Response Zones
- County Maintained Bridge
- Fire Station

Response Zones



1 in = 1.07 miles

North - Zone 4



Snow Plow Routes

Winter 2022 / 2023

for Clackamas County
Transportation Maintenance

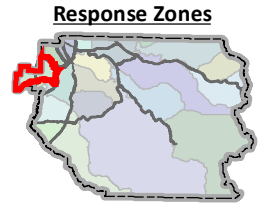
Plow Routes 2023
Plow Response Priority
 1 - High
 2 - Medium
 3 - Low

PlowTurnaround_SnowPole_2020 Events
 ● Snow Plow Turnaround
 ● Snow Poles

Emergency Transportation Routes
 ★ PRIMARY
 ● SECONDARY
 ○ ALTERNATE

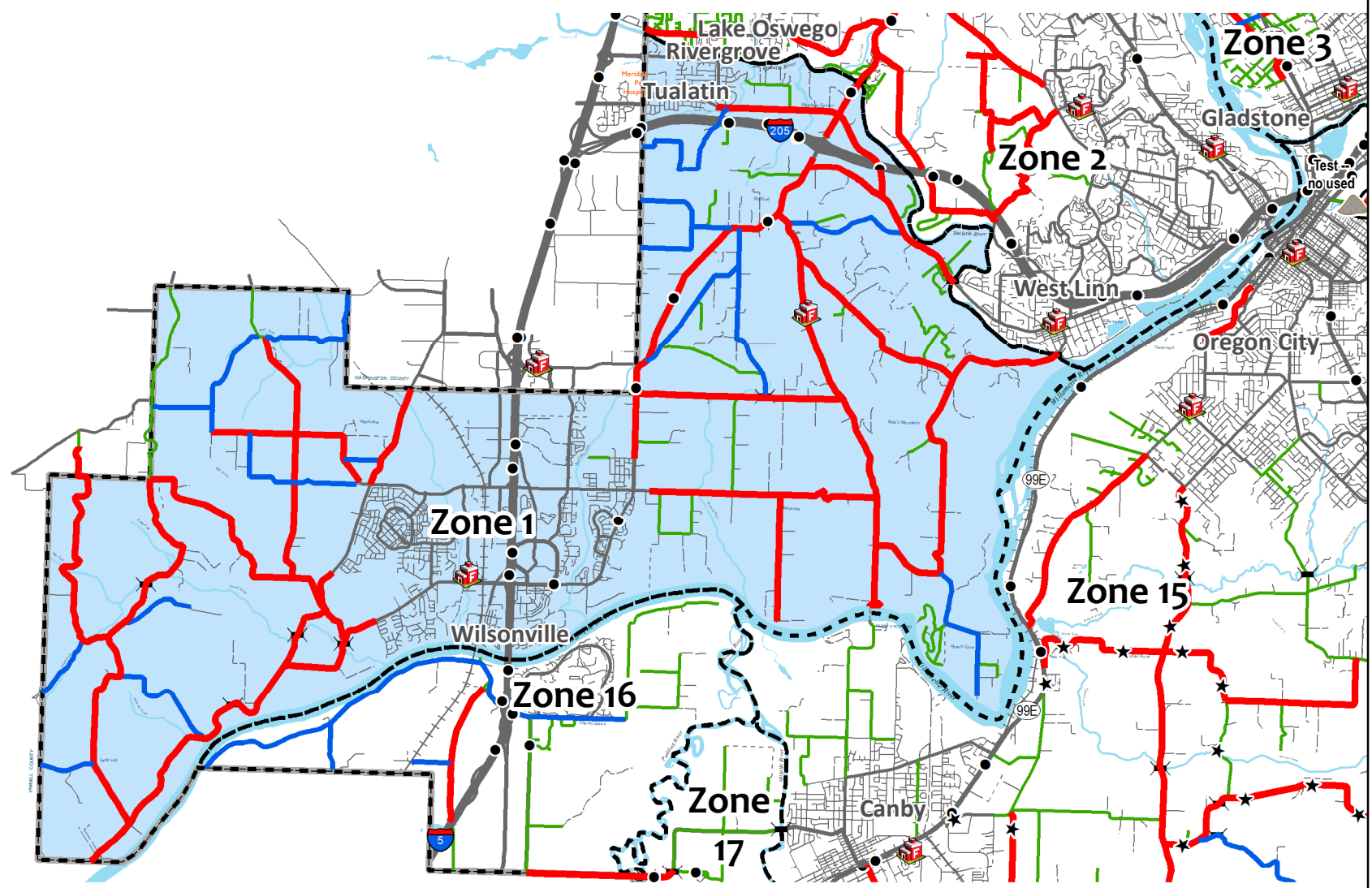
Stockpile Sites
 ▲ No Winter Sand
 ▲ Winter Sand
 ▲ Reporting Location

Response Zones
 - - - Response Zones
 - - - County Maintained Bridge
 🚒 Fire Station



1 in = 1.61 miles

West - Zone 1



Snow Plow Routes Winter 2022 / 2023

for Clackamas County
Transportation Maintenance

Plow Routes 2023

Plow Response Priority

- 1 - High
- 2 - Medium
- 3 - Low

PlowTurnaround_SnowPole_2020 Events

- Snow Plow Turnaround
- Snow Poles

Emergency Transportation Routes

- ★ ★ PRIMARY
- ● SECONDARY
- ○ ALTERNATE

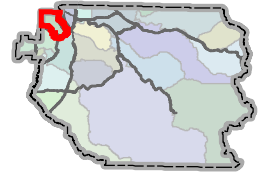
Stockpile Sites

- ▲ No Winter Sand
- ▲ Winter Sand
- ▲ Reporting Location

Response Zones

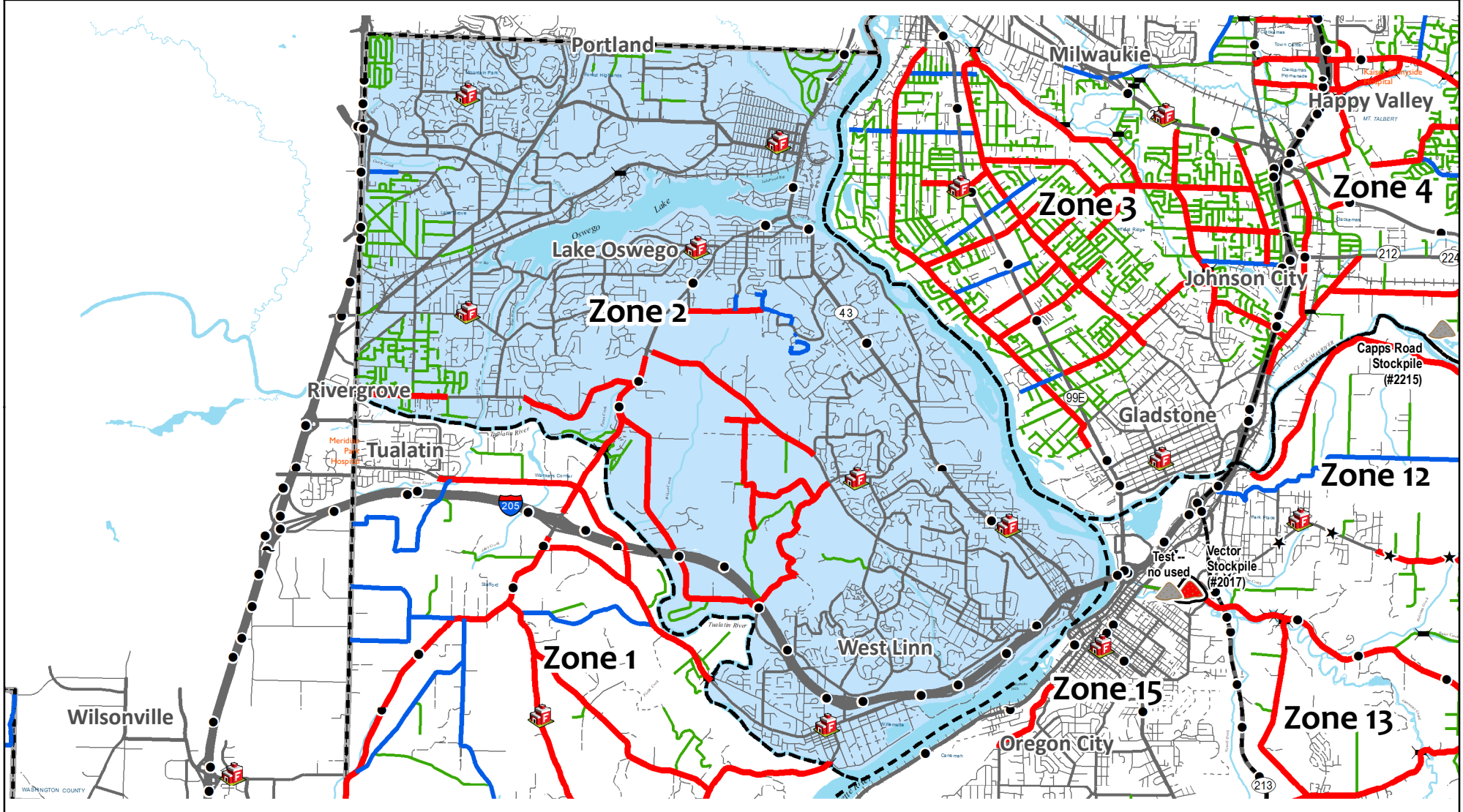
- Response Zones
- County Maintained Bridge
- Fire Station

Response Zones



1 in = 1.27 miles

West - Zone 2



Snow Plow Routes

Winter 2022 / 2023

for Clackamas County
Transportation Maintenance

Plow Routes 2023

Plow Response Priority

- 1 - High
- 2 - Medium
- 3 - Low

PlowTurnaround_SnowPole_2020 Events

- Snow Plow Turnaround
- Snow Poles

Emergency Transportation Routes

- ★ ★ PRIMARY
- ● SECONDARY
- ○ ALTERNATE

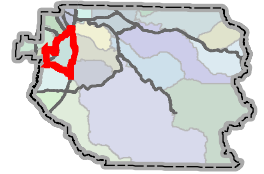
Stockpile Sites

- ▲ No Winter Sand
- ▲ Winter Sand
- ▲ Reporting Location

Response Zones

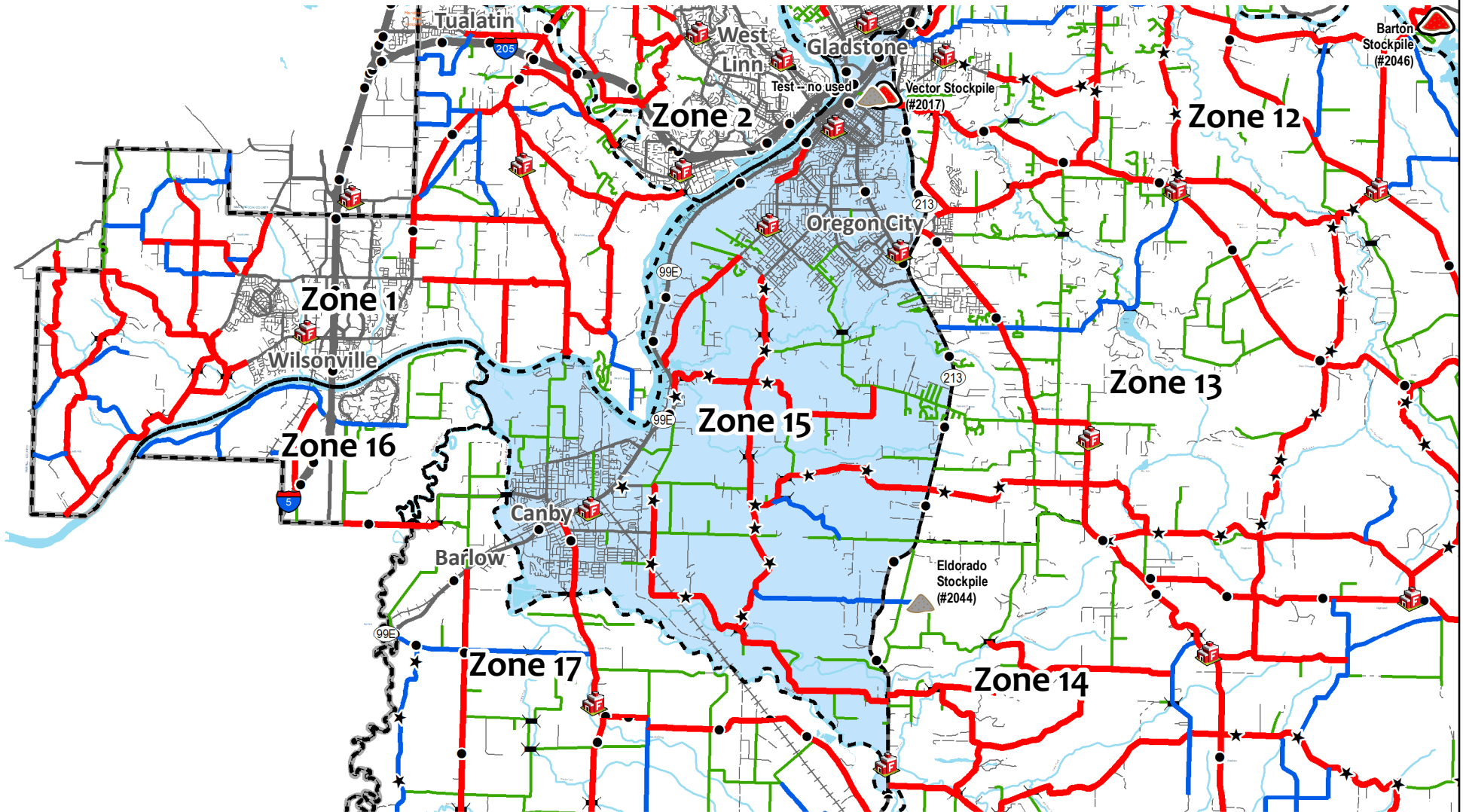
- Response Zones
- County Maintained Bridge
- Fire Station

Response Zones



1 in = 2.34 miles

West - Zone 15



Snow Plow Routes

Winter 2022 / 2023

for Clackamas County
Transportation Maintenance

Plow Routes 2023
Plow Response Priority
 1 - High
 2 - Medium
 3 - Low

PlowTurnaround_SnowPole_2020 Events
 ● Snow Plow Turnaround
 ● Snow Poles

Emergency Transportation Routes
 ★ PRIMARY
 ● SECONDARY
 ○ ALTERNATE

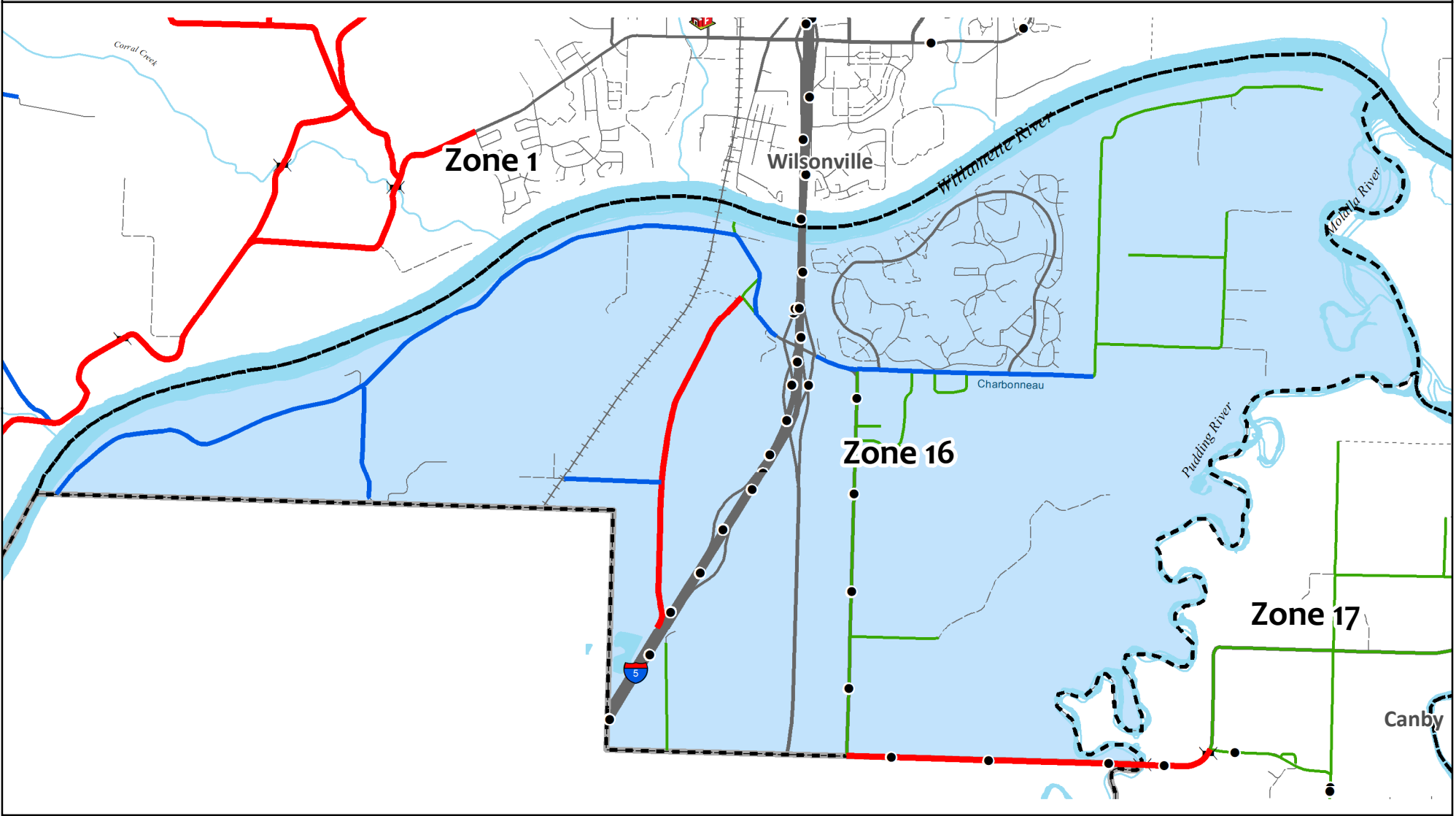
Stockpile Sites
 ▲ No Winter Sand
 ▲ Winter Sand
 ▲ Reporting Location

Response Zones
 - - - - - Response Zones
 X County Maintained Bridge
 🚒 Fire Station



1 in = 0.59 miles

West - Zone 16



Snow Plow Routes

Winter 2022 / 2023

for Clackamas County
Transportation Maintenance

Plow Routes 2023

Plow Response Priority

- 1 - High
- 2 - Medium
- 3 - Low

PlowTurnaround_SnowPole_2020 Events

- Snow Plow Turnaround
- Snow Poles

Emergency Transportation Routes

- ★ ★ PRIMARY
- ● SECONDARY
- ○ ALTERNATE

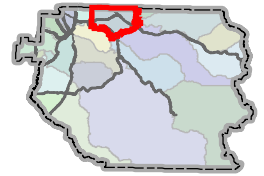
Stockpile Sites

- ▲ No Winter Sand
- ▲ Winter Sand
- ▲ Reporting Location

Response Zones

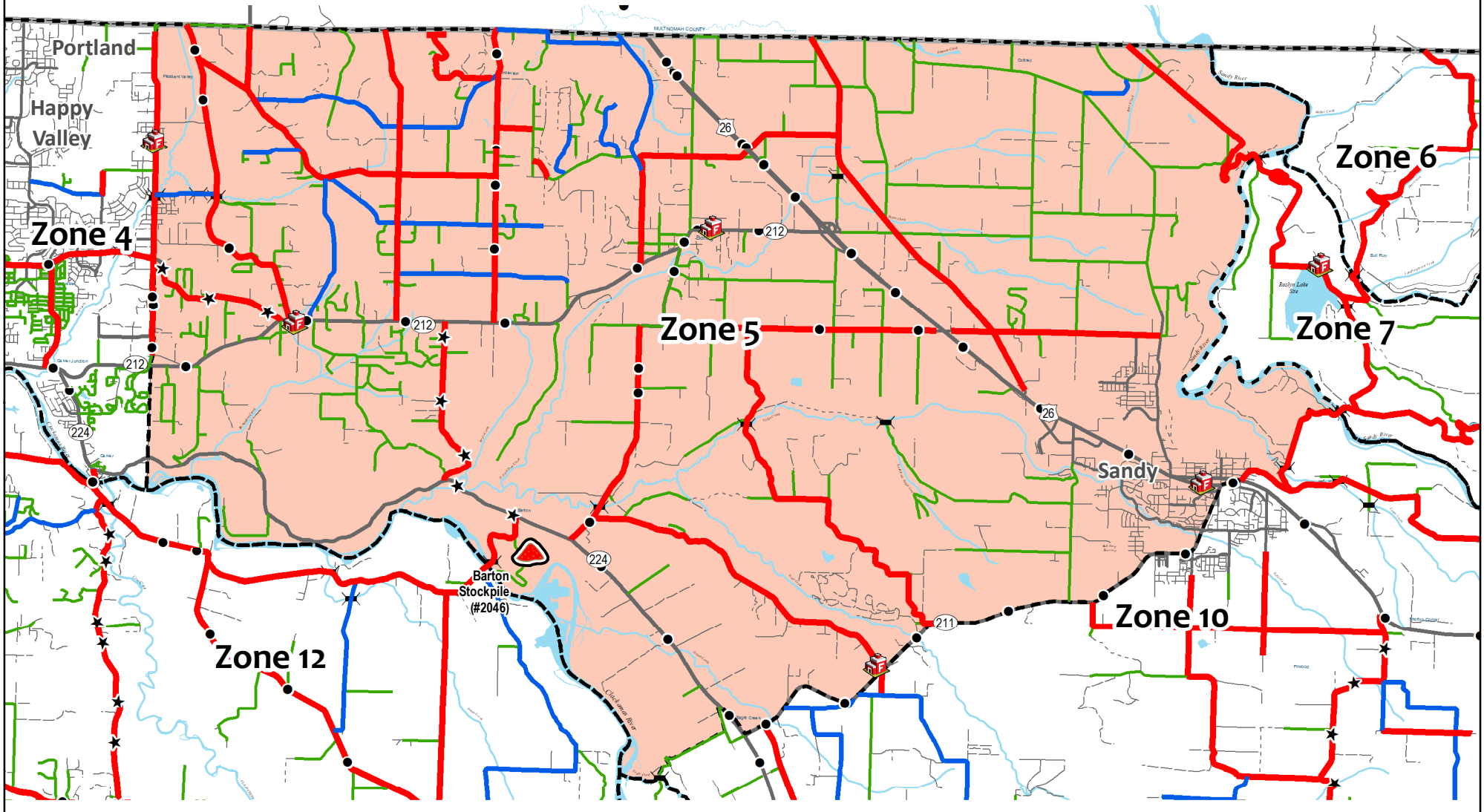
- Response Zones
- County Maintained Bridge
- 🚒 Fire Station

Response Zones



1 in = 1.46 miles

East - Zone 5



Snow Plow Routes

Winter 2022 / 2023

for Clackamas County
Transportation Maintenance

Plow Routes 2023
Plow Response Priority
— 1 - High
— 2 - Medium
— 3 - Low

PlowTurnaround_SnowPole_2020 Events
● Snow Plow Turnaround
● Snow Poles

Emergency Transportation Routes
★ ★ PRIMARY
● ● SECONDARY
○ ○ ALTERNATE

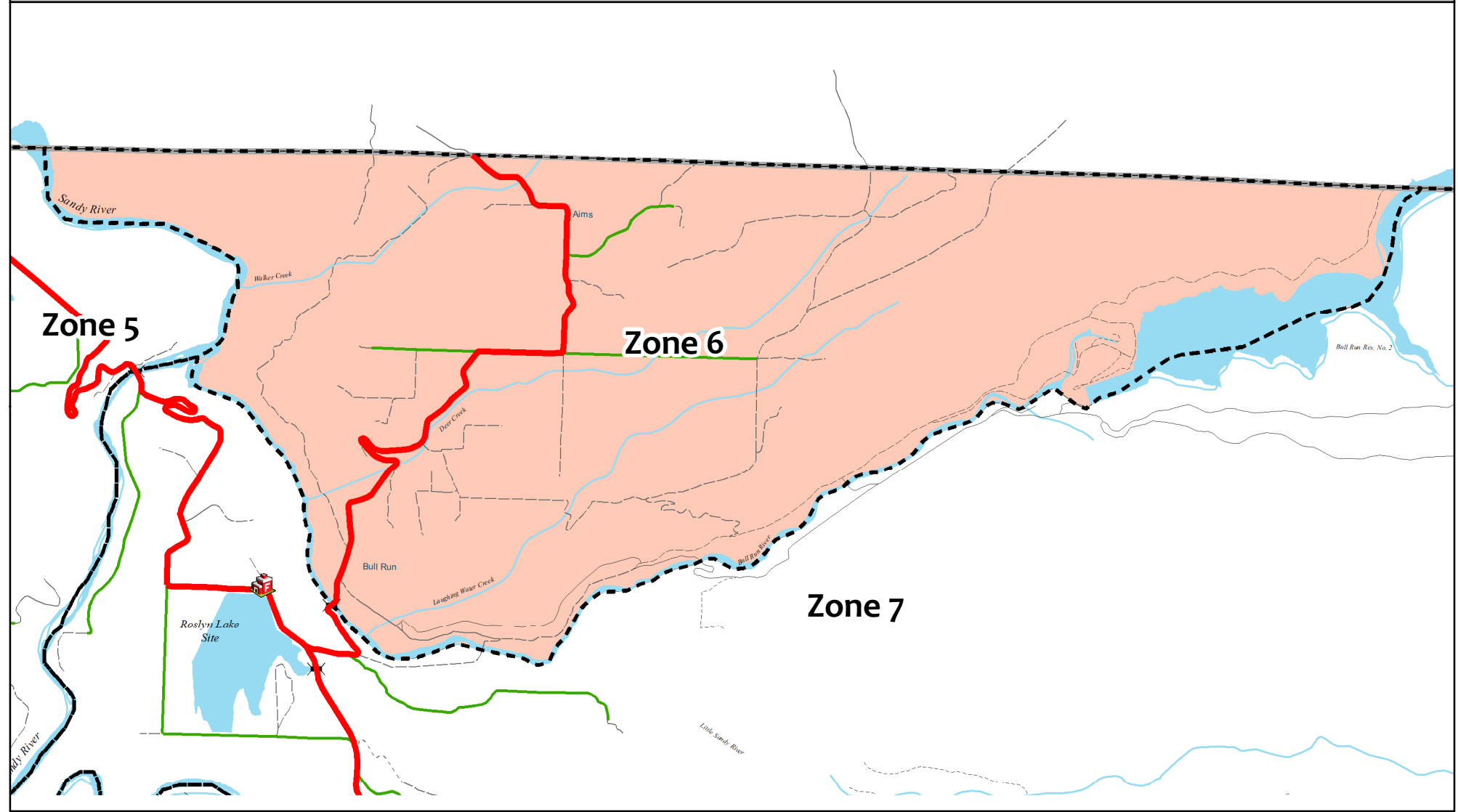
Stockpile Sites
▲ No Winter Sand
▲ Winter Sand
▲ Reporting Location

Response Zones
 Response Zones
 County Maintained Bridge
■ Fire Station



1 in = 0.71 miles

East - Zone 6



Snow Plow Routes

Winter 2022 / 2023

for Clackamas County
Transportation Maintenance

Plow Routes 2023

Plow Response Priority

- 1 - High
- 2 - Medium
- 3 - Low

PlowTurnaround_SnowPole_2020 Events

- Snow Plow Turnaround
- Snow Poles

Emergency Transportation Routes

- ★ ★ PRIMARY
- ● SECONDARY
- ○ ALTERNATE

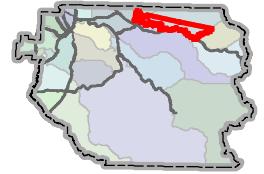
Stockpile Sites

- ▲ No Winter Sand
- ▲ Winter Sand
- ▲ Reporting Location

Response Zones

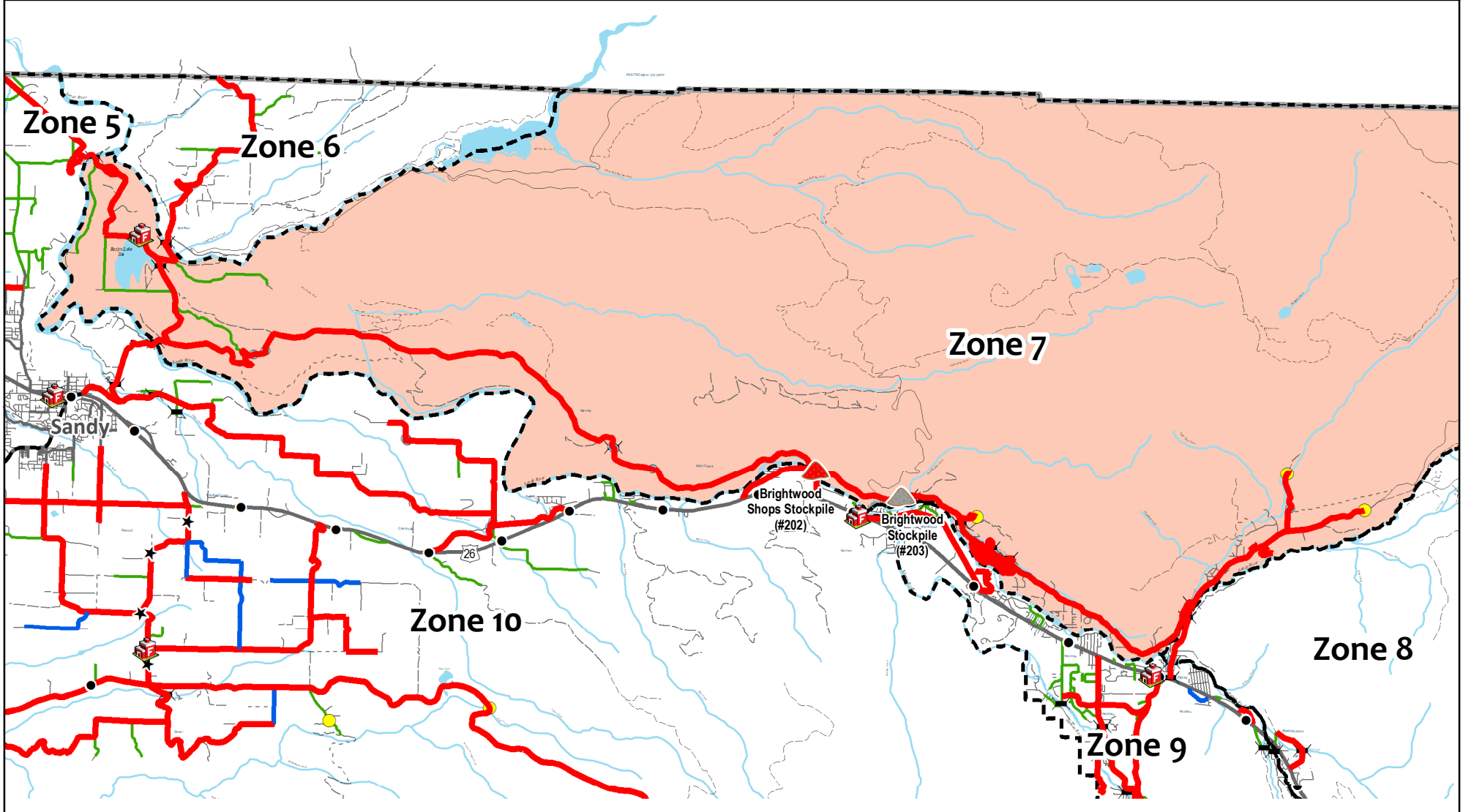
- Response Zones
- County Maintained Bridge
- Fire Station

Response Zones



1 in = 1.96 miles

East - Zone 7



Snow Plow Routes

Winter 2022 / 2023

for Clackamas County
Transportation Maintenance

Plow Routes 2023

Plow Response Priority

- 1 - High
- 2 - Medium
- 3 - Low

PlowTurnaround_SnowPole_2020 Events

- Snow Plow Turnaround
- Snow Poles

Emergency Transportation Routes

- ★ ★ PRIMARY
- ● SECONDARY
- ○ ALTERNATE

Stockpile Sites

- ▲ No Winter Sand
- ▲ Winter Sand
- ▲ Reporting Location

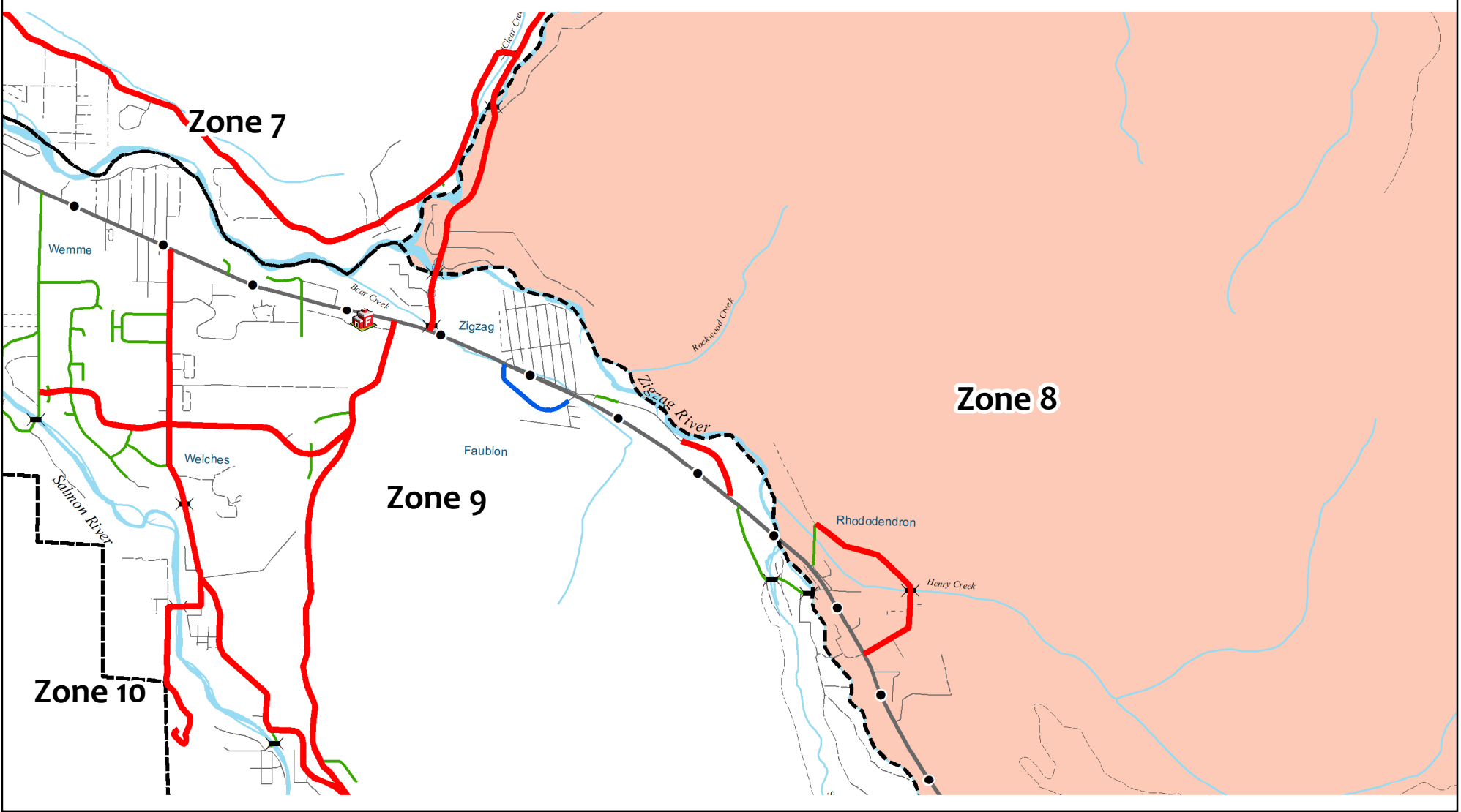
Response Zones

- Response Zones
- County Maintained Bridge
- Fire Station



1 in = 0.54 miles

East - Zone 8



Snow Plow Routes

Winter 2022 / 2023

for Clackamas County
Transportation Maintenance

Plow Routes 2023
Plow Response Priority
 1 - High
 2 - Medium
 3 - Low

PlowTurnaround_SnowPole_2020 Events
 ● Snow Plow Turnaround
 ● Snow Poles

Emergency Transportation Routes
 ★ ★ PRIMARY
 ● ● SECONDARY
 ○ ○ ALTERNATE

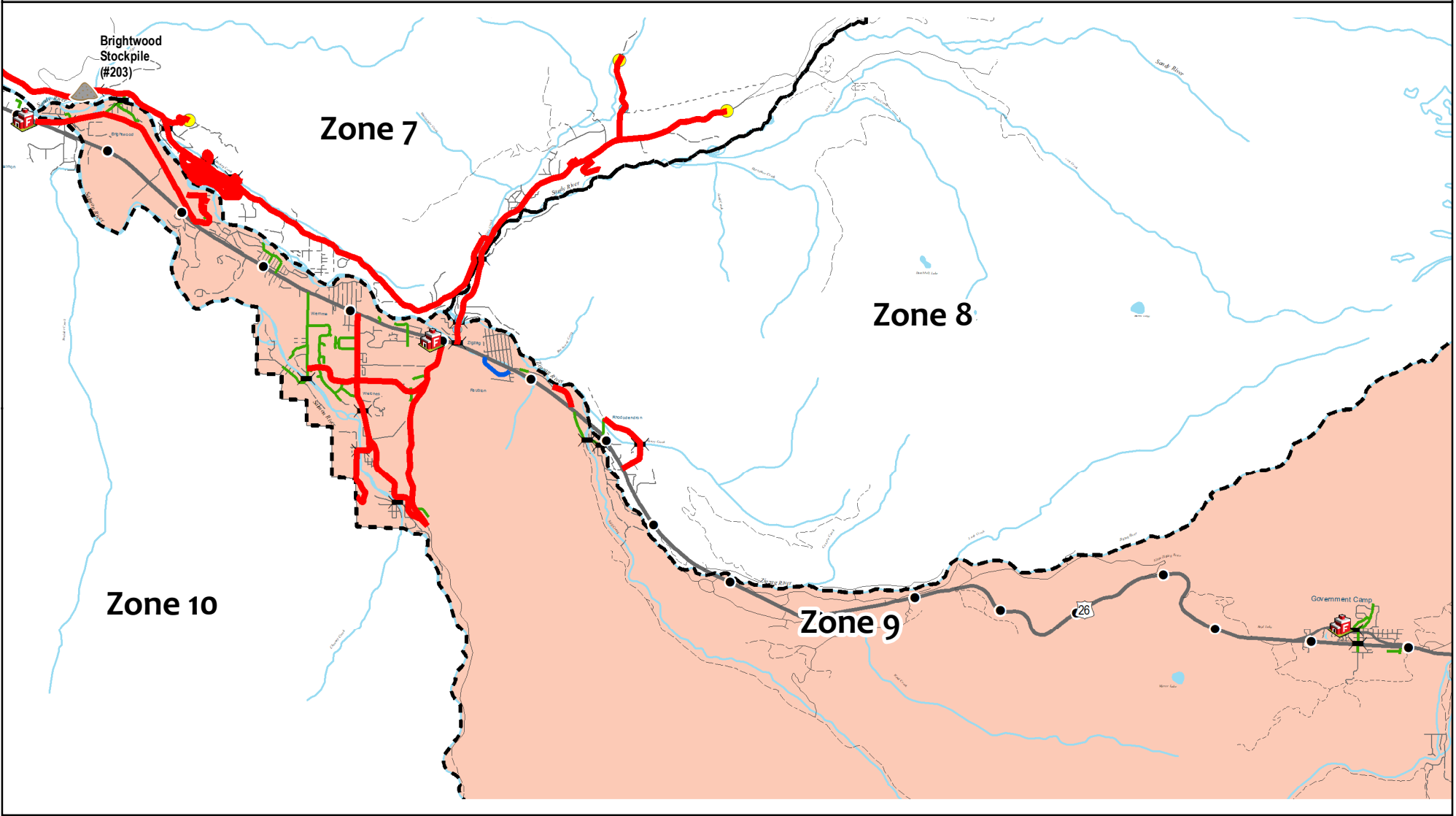
Stockpile Sites
 ▲ No Winter Sand
 ▲ Winter Sand
 ▲ Reporting Location

Response Zones
 - - - - - Response Zones
 - - - - - County Maintained Bridge
 🚒 Fire Station



1 in = 1.41 miles

East - Zone 9



Snow Plow Routes

Winter 2022 / 2023

for Clackamas County
Transportation Maintenance

Plow Routes 2023
Plow Response Priority
 1 - High
 2 - Medium
 3 - Low

PlowTurnaround_SnowPole_2020 Events
 ● Snow Plow Turnaround
 ● Snow Poles

Emergency Transportation Routes
 ★ PRIMARY
 ● SECONDARY
 ○ ALTERNATE

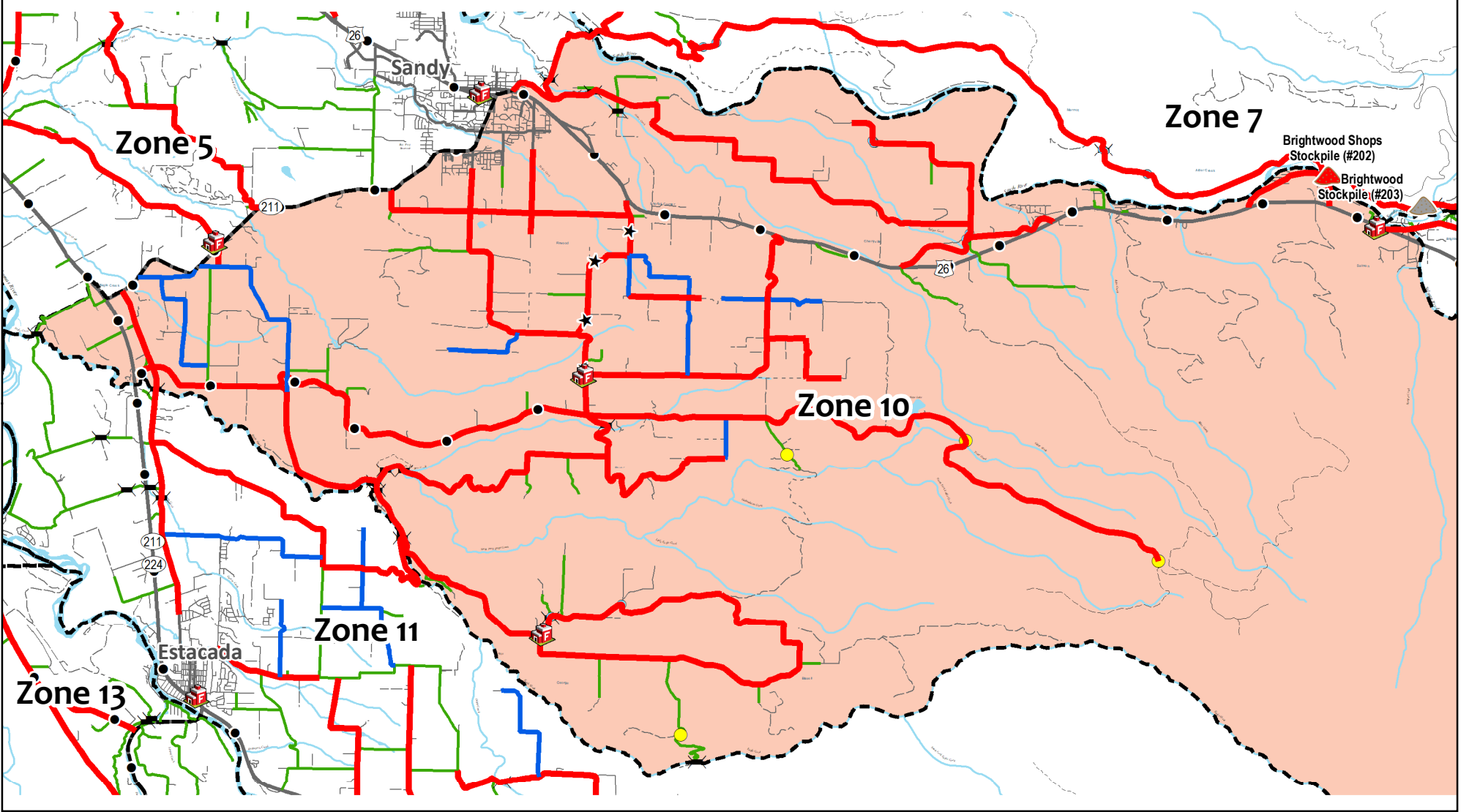
Stockpile Sites
 ▲ No Winter Sand
 ▲ Winter Sand
 ▲ Reporting Location

Response Zones
 - - - Response Zones
 - County Maintained Bridge
 - Fire Station



1 in = 1.76 miles

East - Zone 10



Snow Plow Routes

Winter 2022 / 2023

for Clackamas County
Transportation Maintenance

Plow Routes 2023

Plow Response Priority

- 1 - High
- 2 - Medium
- 3 - Low

PlowTurnaround_SnowPole_2020 Events

- Snow Plow Turnaround
- Snow Poles

Emergency Transportation Routes

- ★ ★ PRIMARY
- ● SECONDARY
- ○ ALTERNATE

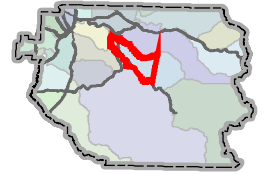
Stockpile Sites

- ▲ No Winter Sand
- ▲ Winter Sand
- ▲ Reporting Location

Response Zones

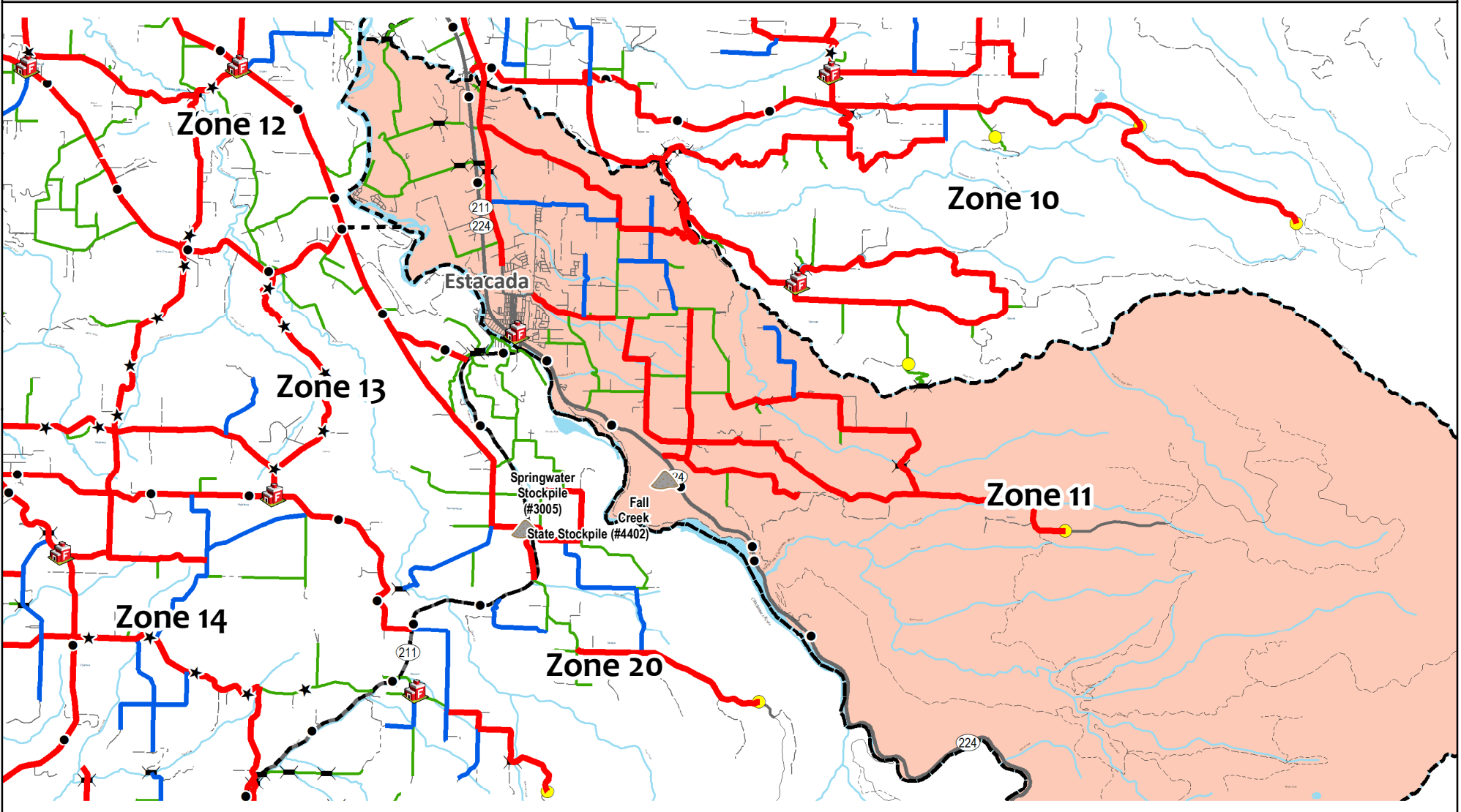
- Response Zones
- County Maintained Bridge
- Fire Station

Response Zones



1 in = 2.17 miles

East - Zone 11



Snow Plow Routes

Winter 2022 / 2023

for Clackamas County
Transportation Maintenance

Plow Routes 2023

Plow Response Priority

- 1 - High
- 2 - Medium
- 3 - Low

PlowTurnaround_SnowPole_2020 Events

- Snow Plow Turnaround
- Snow Poles

Emergency Transportation Routes

- ★ ★ PRIMARY
- ● SECONDARY
- ○ ALTERNATE

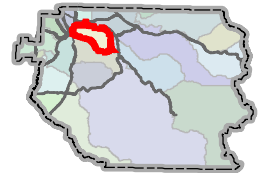
Stockpile Sites

- ▲ No Winter Sand
- ▲ Winter Sand
- ▲ Reporting Location

Response Zones

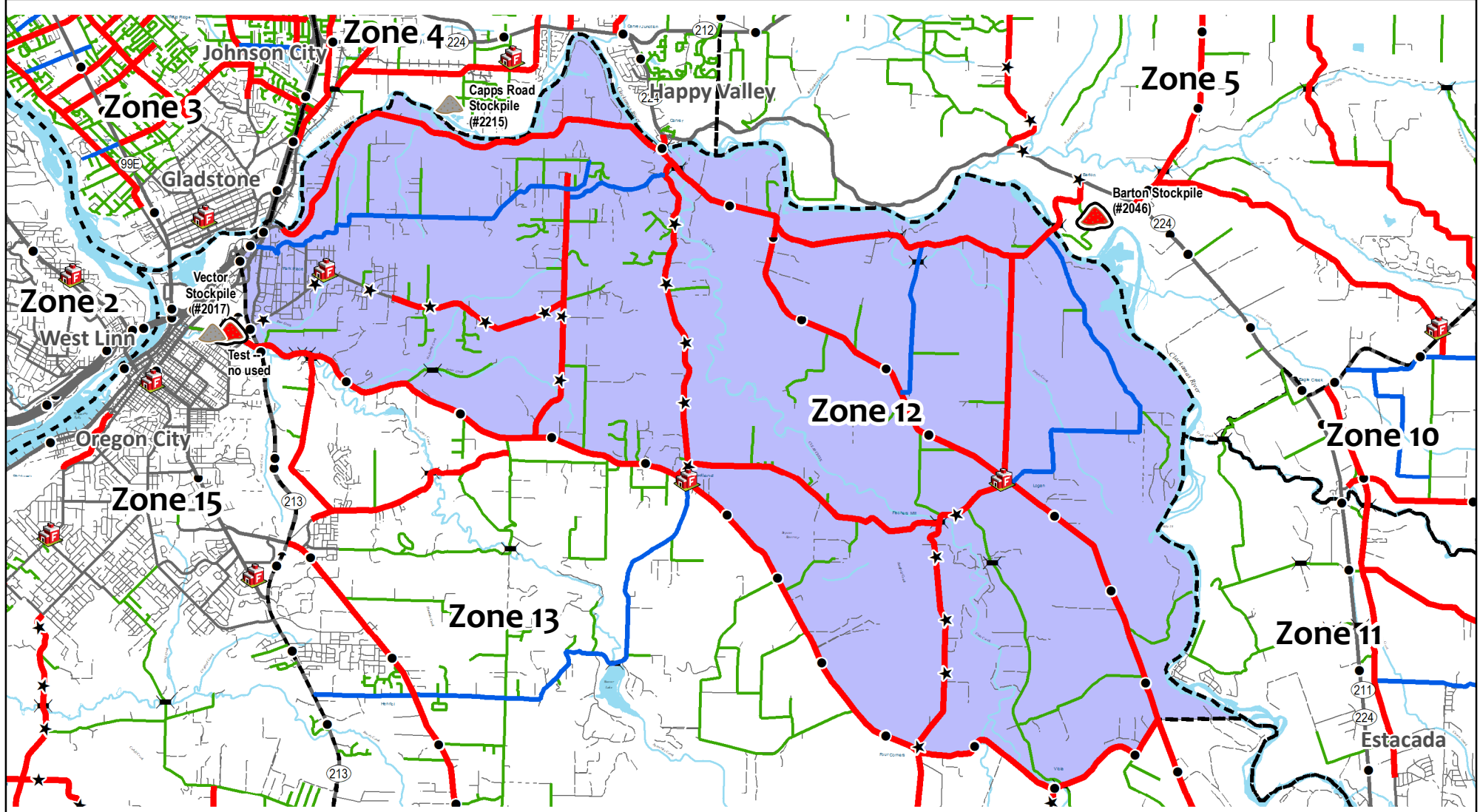
- Response Zones
- County Maintained Bridge
- Fire Station

Response Zones



1 in = 1.47 miles

Central - Zone 12



Snow Plow Routes Winter 2022 / 2023

for Clackamas County
Transportation Maintenance

Plow Routes 2023

Plow Response Priority

- 1 - High
- 2 - Medium
- 3 - Low

PlowTurnaround_SnowPole_2020 Events

- Snow Plow Turnaround
- Snow Poles

Emergency Transportation Routes

- ★ ★ PRIMARY
- ● SECONDARY
- ○ ALTERNATE

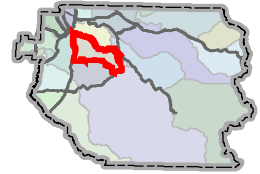
Stockpile Sites

- ▲ No Winter Sand
- ▲ Winter Sand
- ▲ Reporting Location

Response Zones

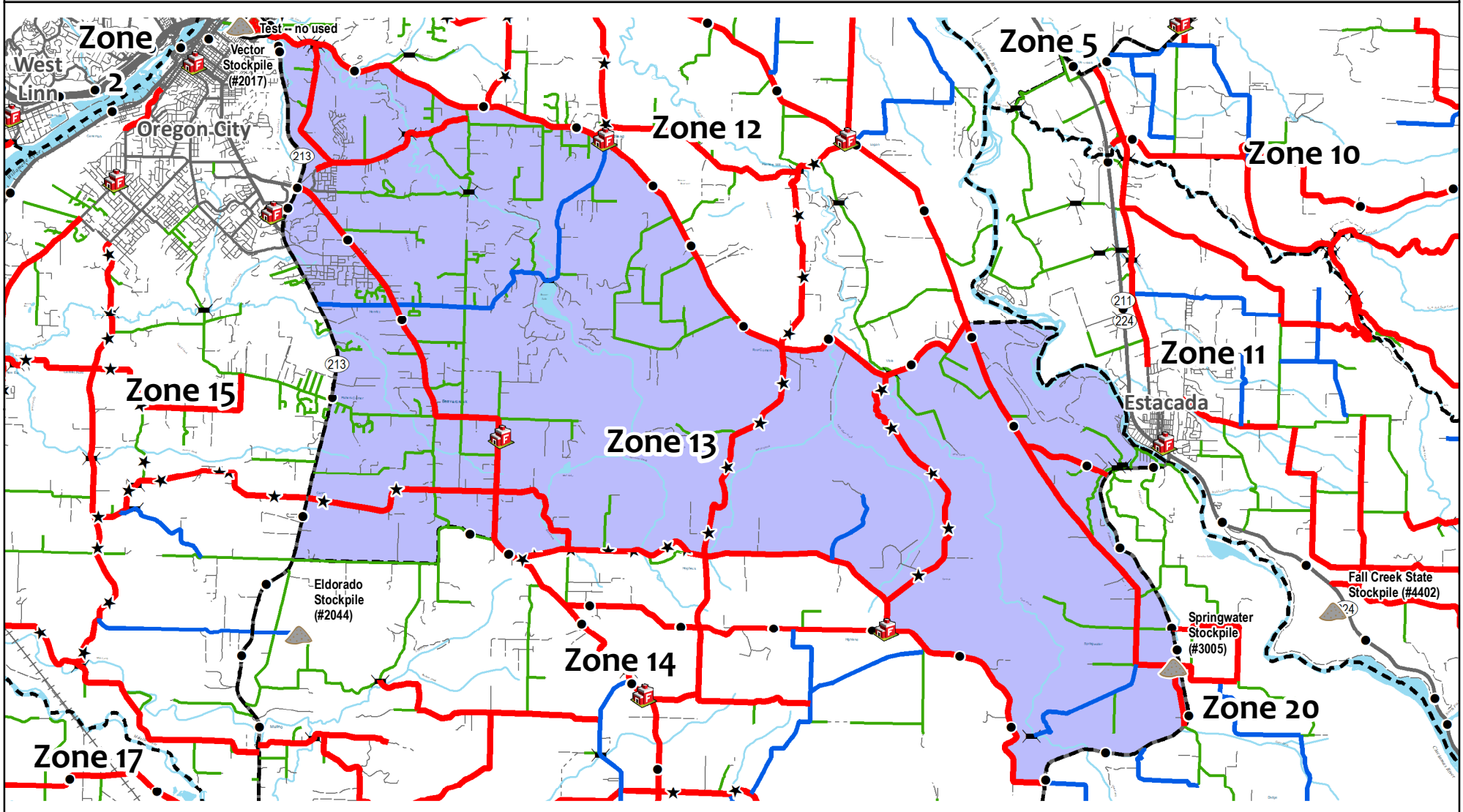
- Response Zones
- County Maintained Bridge
- 🚒 Fire Station

Response Zones



1 in = 1.9 miles

Central - Zone 13



Snow Plow Routes

Winter 2022 / 2023

for Clackamas County
Transportation Maintenance

Plow Routes 2023

Plow Response Priority

- 1 - High
- 2 - Medium
- 3 - Low

PlowTurnaround_SnowPole_2020 Events

- Snow Plow Turnaround
- Snow Poles

Emergency Transportation Routes

- ★ ★ PRIMARY
- ● SECONDARY
- ○ ALTERNATE

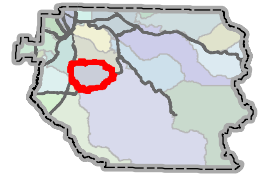
Stockpile Sites

- ▲ No Winter Sand
- ▲ Winter Sand
- ▲ Reporting Location

Response Zones

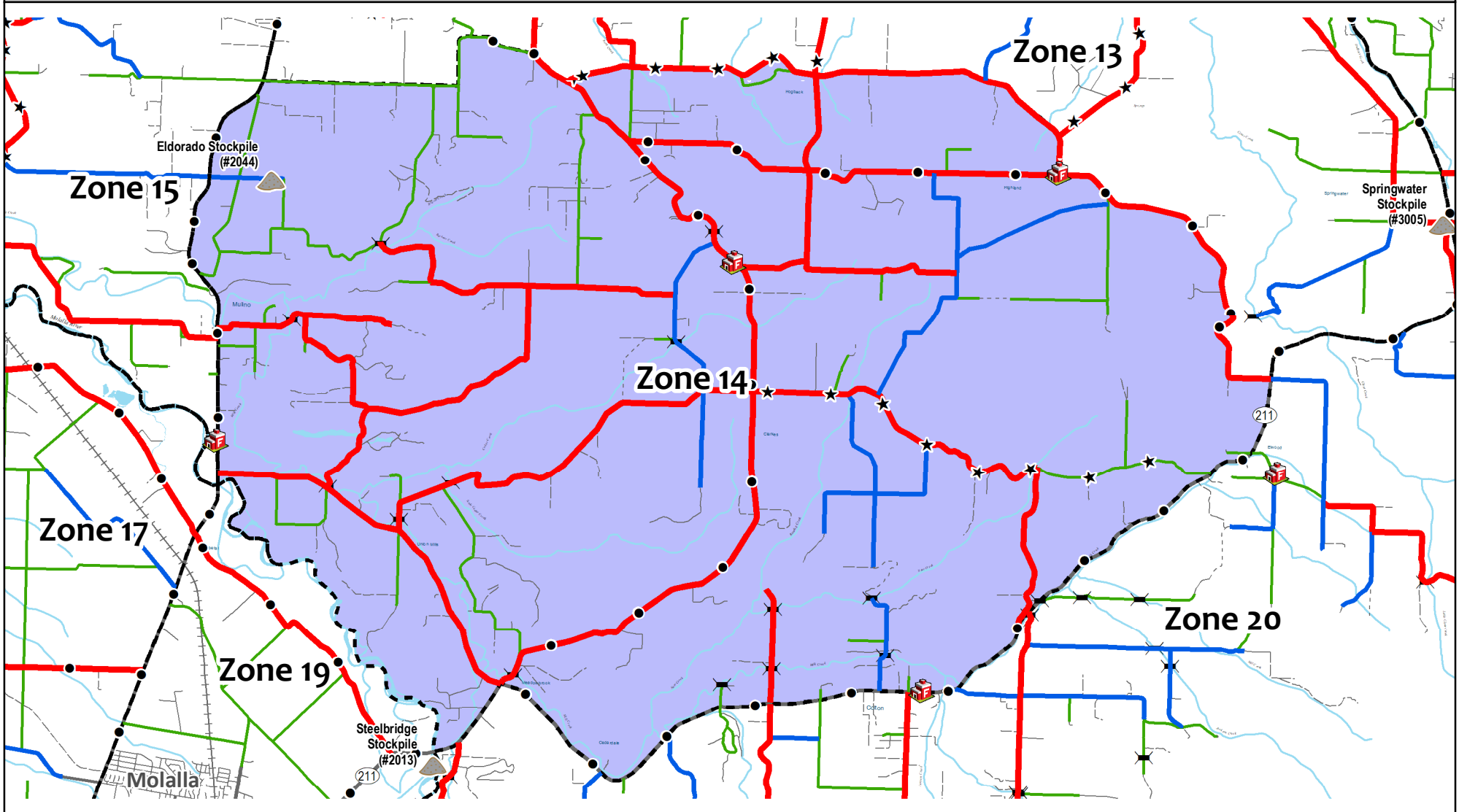
- Response Zones
- County Maintained Bridge
- Fire Station

Response Zones



1 in = 1.41 miles

Central - Zone 14



Snow Plow Routes

Winter 2022 / 2023

for Clackamas County
Transportation Maintenance

Plow Routes 2023

Plow Response Priority

- 1 - High
- 2 - Medium
- 3 - Low

PlowTurnaround_SnowPole_2020 Events

- Snow Plow Turnaround
- Snow Poles

Emergency Transportation Routes

- ★ ★ PRIMARY
- ● SECONDARY
- ○ ALTERNATE

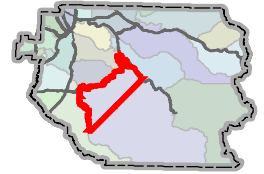
Stockpile Sites

- ▲ No Winter Sand
- ▲ Winter Sand
- ▲ Reporting Location

Response Zones

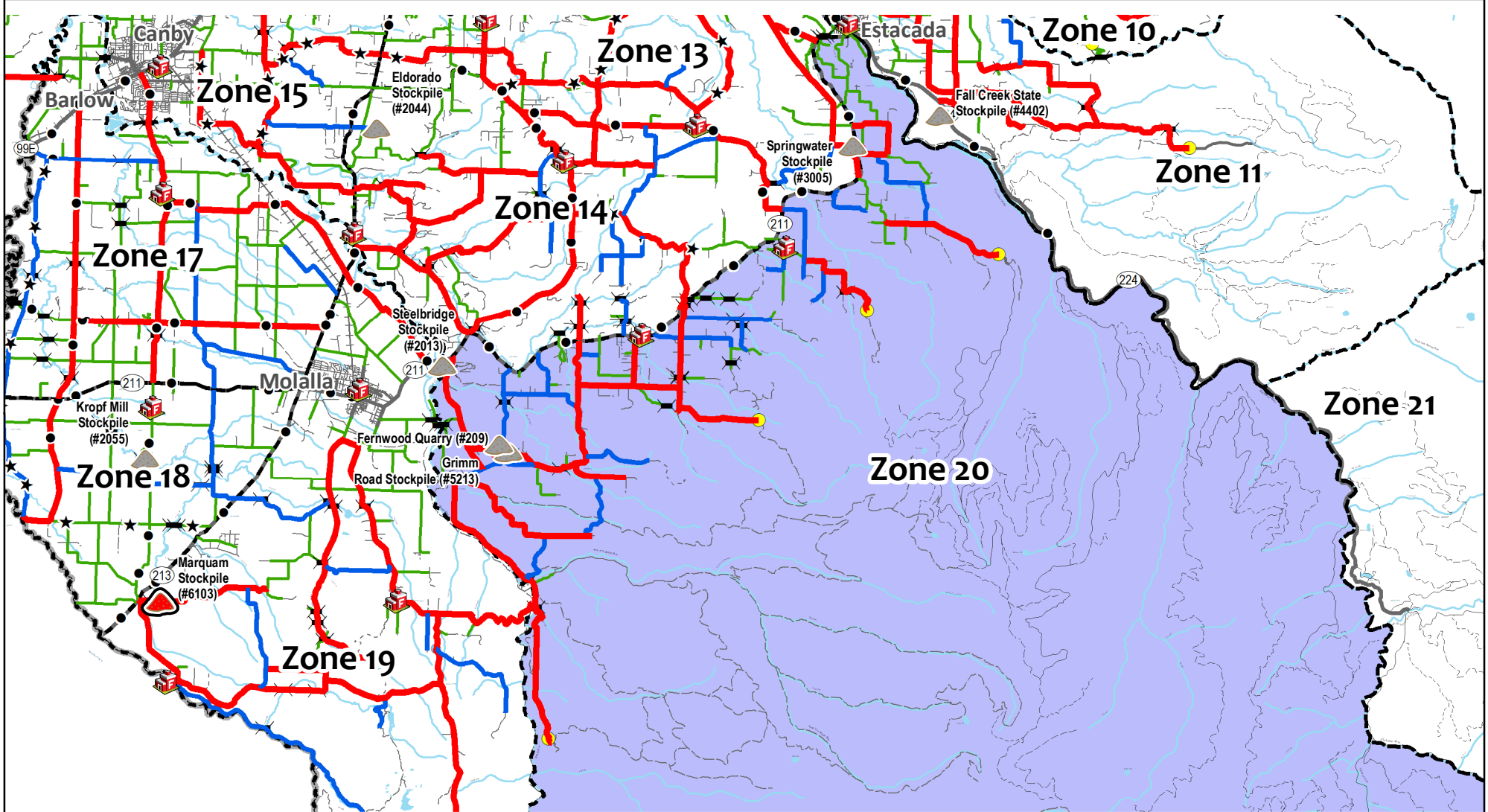
- Response Zones
- County Maintained Bridge
- Fire Station

Response Zones



1 in = 3.54 miles

Central - Zone 20



Snow Plow Routes

Winter 2022 / 2023

for Clackamas County
Transportation Maintenance

Plow Routes 2023

Plow Response Priority

- 1 - High
- 2 - Medium
- 3 - Low

PlowTurnaround_SnowPole_2020 Events

- Snow Plow Turnaround
- Snow Poles

Emergency Transportation Routes

- ★ ★ PRIMARY
- ● SECONDARY
- ○ ALTERNATE

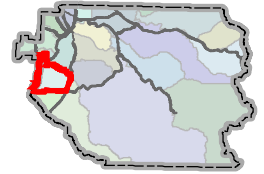
Stockpile Sites

- ▲ No Winter Sand
- ▲ Winter Sand
- ▲ Reporting Location

Response Zones

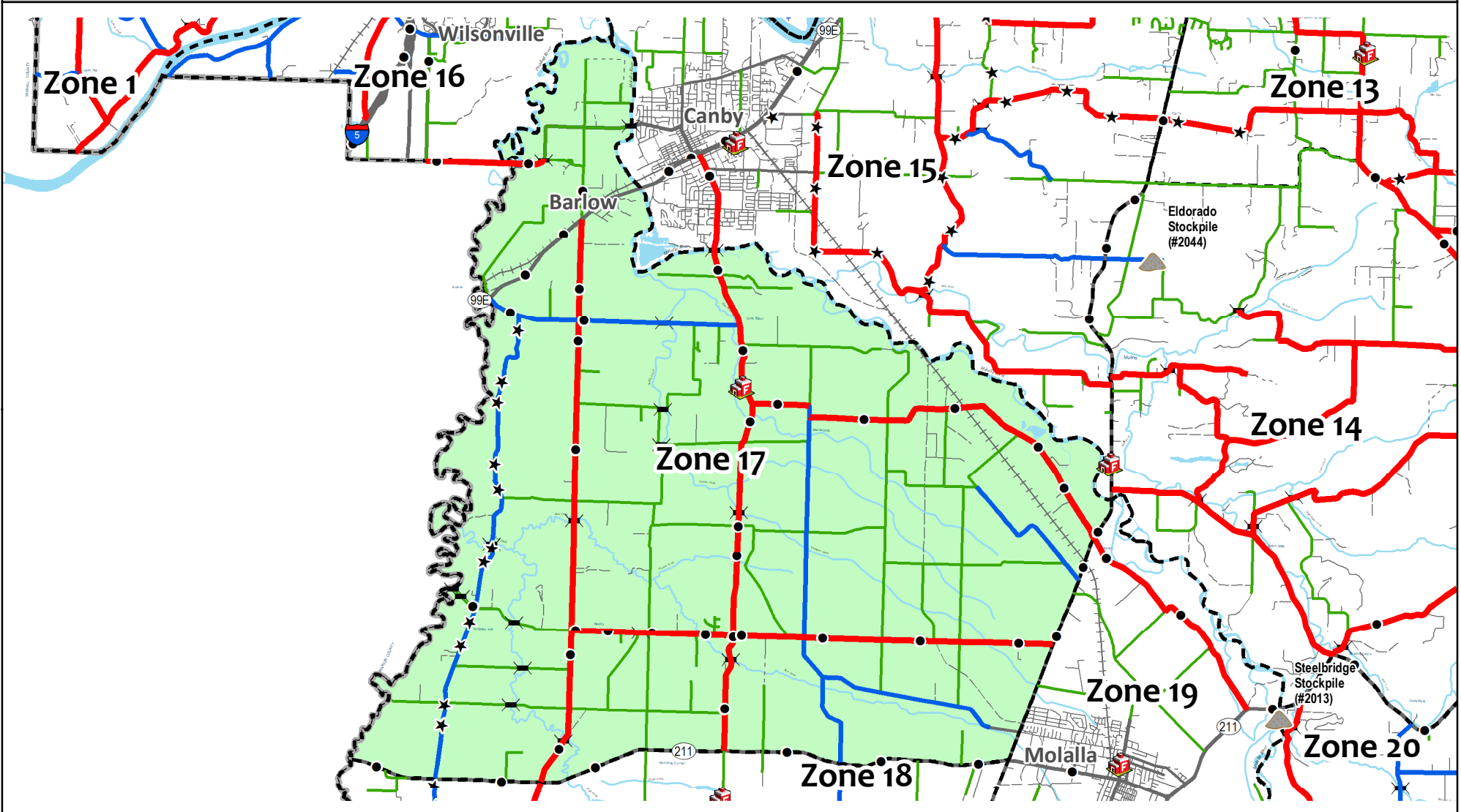
- Response Zones
- County Maintained Bridge
- Fire Station

Response Zones



1 in = 1.81 miles

South - Zone 17



Snow Plow Routes

Winter 2022 / 2023

for Clackamas County
Transportation Maintenance

Plow Routes 2023

Plow Response Priority

- 1 - High
- 2 - Medium
- 3 - Low

PlowTurnaround_SnowPole_2020 Events

- Snow Plow Turnaround
- Snow Poles

Emergency Transportation Routes

- ★ ★ PRIMARY
- ● SECONDARY
- ○ ALTERNATE

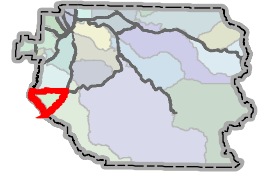
Stockpile Sites

- ▲ No Winter Sand
- ▲ Winter Sand
- ▲ Reporting Location

Response Zones

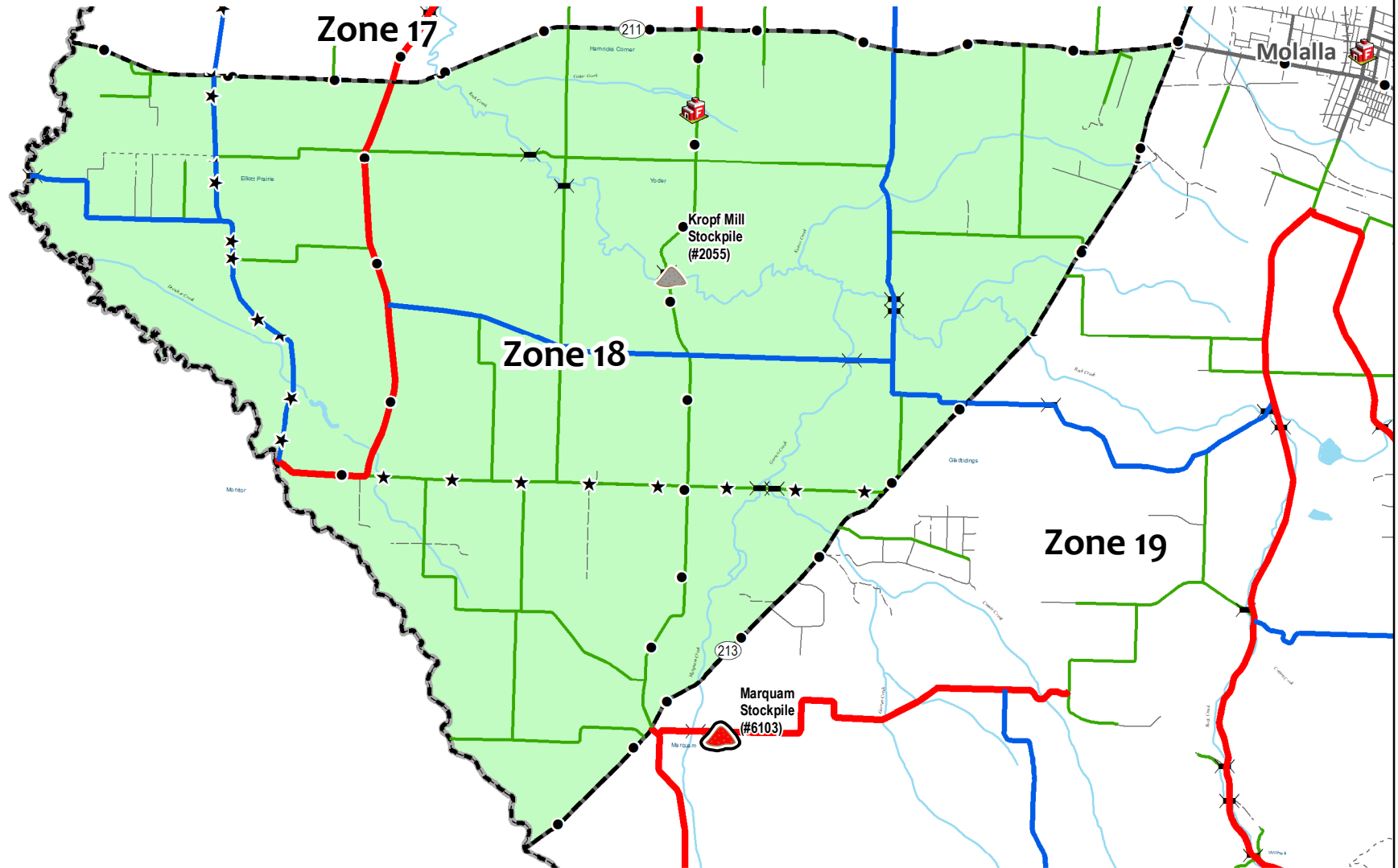
- Response Zones
- County Maintained Bridge
- Fire Station

Response Zones



1 in = 1.19 miles

South - Zone 18



Snow Plow Routes

Winter 2022 / 2023

for Clackamas County
Transportation Maintenance

Plow Routes 2023

Plow Response Priority

- 1 - High
- 2 - Medium
- 3 - Low

PlowTurnaround_SnowPole_2020 Events

- Snow Plow Turnaround
- Snow Poles

Emergency Transportation Routes

- ★ ★ PRIMARY
- ● SECONDARY
- ○ ALTERNATE

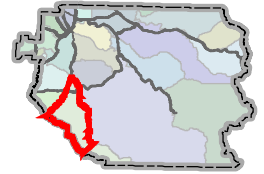
Stockpile Sites

- ▲ No Winter Sand
- ▲ Winter Sand
- ▲ Reporting Location

Response Zones

- Response Zones
- County Maintained Bridge
- 🚒 Fire Station

Response Zones



1 in = 3.59 miles

South - Zone 19

