

CLACKAMAS COUNTY BOARD OF COUNTY COMMISSIONERS

Study Session Worksheet

Presentation Date: 09/22/2015 **Approx Start Time:** 11:00 am **Approx Length:** 60 minutes

Presentation Title: Presentation from TriMet on Draft SE Service Enhancement Plan Vision

Department: Department of Transportation and Development (DTD) - Engineering Division

Presenters: Karen Buehrig, Transportation Planning Supervisor; Alan Lehto, Director of the TriMet Planning and Policy Department and Vanessa Vissar, TriMet Planner

Other Invitees: Dan Chandler, Strategic Policy Administrator; Lori Mastrantonio, Senior Planner

WHAT ACTION ARE YOU REQUESTING FROM THE BOARD? Would the Board like to submit comments to TriMet about its Draft SE Service Enhancement Plan Vision?

EXECUTIVE SUMMARY: TriMet is taking comments on its Draft SE Service Enhancement Plan Vision (SE SEP). At this study session TriMet staff will present the plan vision to the Board and ask for feedback on the long-term vision for transit service in the areas of Clackamas County that are within the TriMet service district.

The Draft SE SEP, attached, describes specific actions that should be made in the future to enhance transit service. It identifies:

- Specific routes where better service (more frequent or longer) should be implemented;
- Location for new bus service; and
- Including the need for Community/Jobs Connector Shuttles.

The Draft SE SEP proposal to provide new service from Oregon City to Happy Valley via Jennings Ave and Highway 212 addresses some of the areas that had not been served before and builds needed east-west connections. The changes made to transit service in conjunction with the opening of the Orange Line also improve east-west service.

The inclusion of Community/Jobs Connector Shuttles in the Draft SE SEP is significant. The vision includes two focus areas for the shuttle -- the Clackamas Regional Center/Industrial Area and south of Oregon City. It is unclear how the shuttles will become a reality, but it is encouraging that TriMet has acknowledged the need for this type of service.

The Clackamas County Transportation System Plan (TSP) includes a variety of policies applicable to TriMet service enhancement planning, including the following:

Policy 5.T.1. Work with transit agencies to identify existing transit deficiencies in the County, needed improvements, and additional park-and-ride lots needed to increase the accessibility of transit services to all potential users.

Policy 5.T.3. Encourage transit providers to restructure transit service to efficiently serve local as well as regional needs.

Policy 5.T.4 Emphasize transit improvements that improve east-west connections; improve service between the County's industrial and commercial areas and neighborhoods; and best meet the needs of all County residents, employees and employers, regardless of race, age, ability, income level and geographic location.

In addition, the TSP existing conditions report identifies several areas in the McLoughlin corridor and the Clackamas Regional Center / Industrial Area that lack transit service where there are sufficient densities of population to support transit.

FINANCIAL IMPLICATIONS: None.

LEGAL/POLICY REQUIREMENTS: None.

PUBLIC/GOVERNMENTAL PARTICIPATION: TriMet is conducting public outreach to collect comments from community members, staff and local governments. They have requested that comments be submitted by October 1, 2015.

OPTIONS:


1. Submit a letter to TriMet with comments on the Draft SE Service Enhancement Plan Vision.
2. Do not submit a letter to TriMet regarding the Draft SE Service Enhancement Plan Vision.

RECOMMENDATION: Develop a letter that reflects the BCC discussion at the September 22 Policy Session and submit it to TriMet by October 1, 2015.

ATTACHMENTS:

- 1) PowerPoint presentation to be given by TriMet staff
- 2) Draft SE Service Enhancement Plan Vision
- 3) Fall Service Change Brochure

SUBMITTED BY:

Division Director/Head Approval  _____

Department Director/Head Approval _____

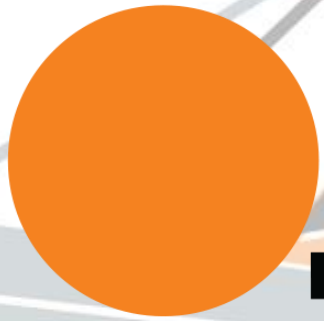
County Administrator Approval _____



**Presentation to the Clackamas County Board of County Commissioners
September 22, 2015**



Catch
the





Schedule

Westside:	Completed in 2014
Southwest:	Completed in 2015
Eastside:	Completion in 2016
Southeast:	Completion in 2016
North/Central:	Completion in 2016

Annual Service Plan

Maintain

Capacity &
Reliability

Schedule & detail
tweaks

Optimize & Restore

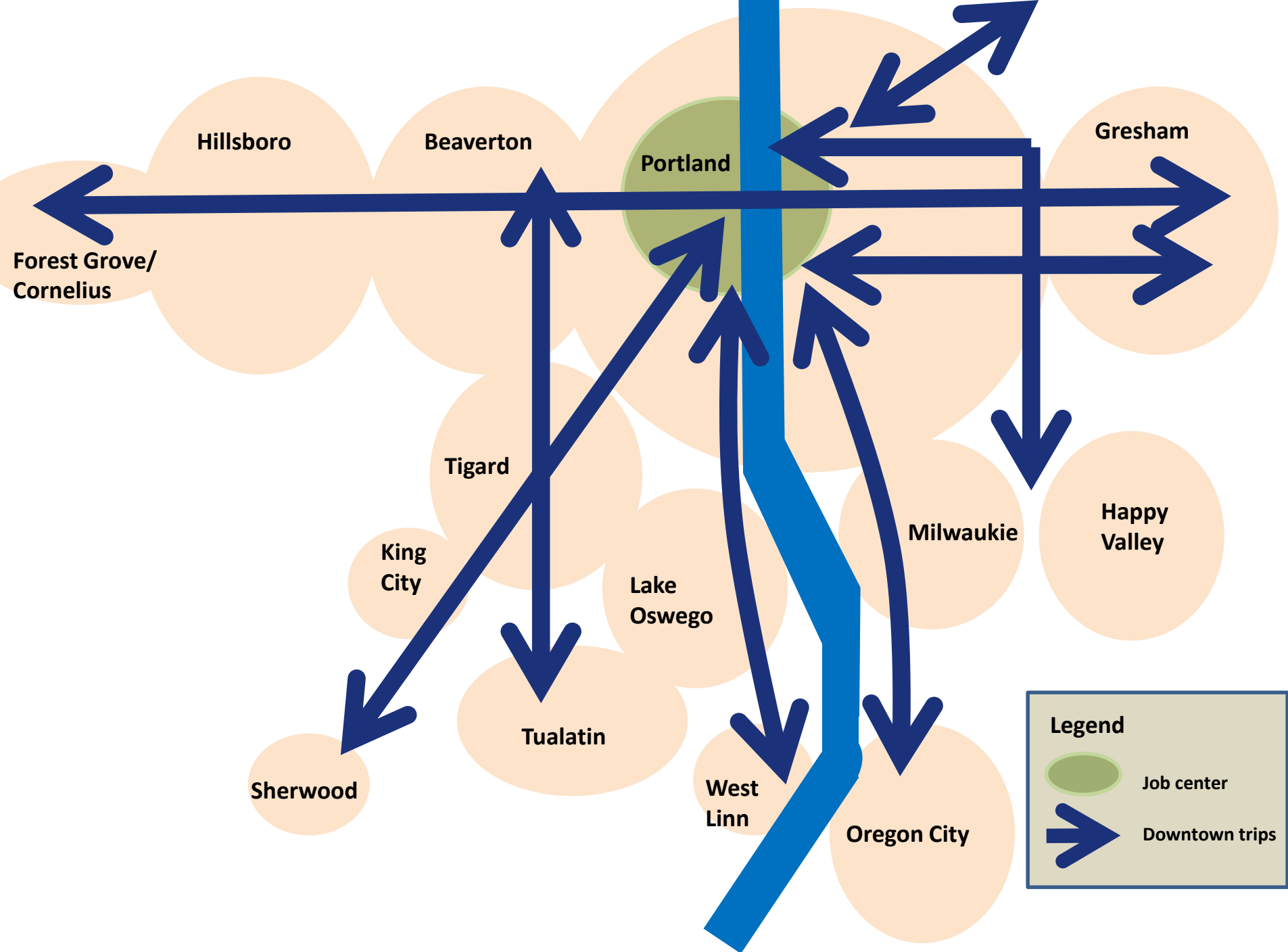
Restore Frequent
Service Levels

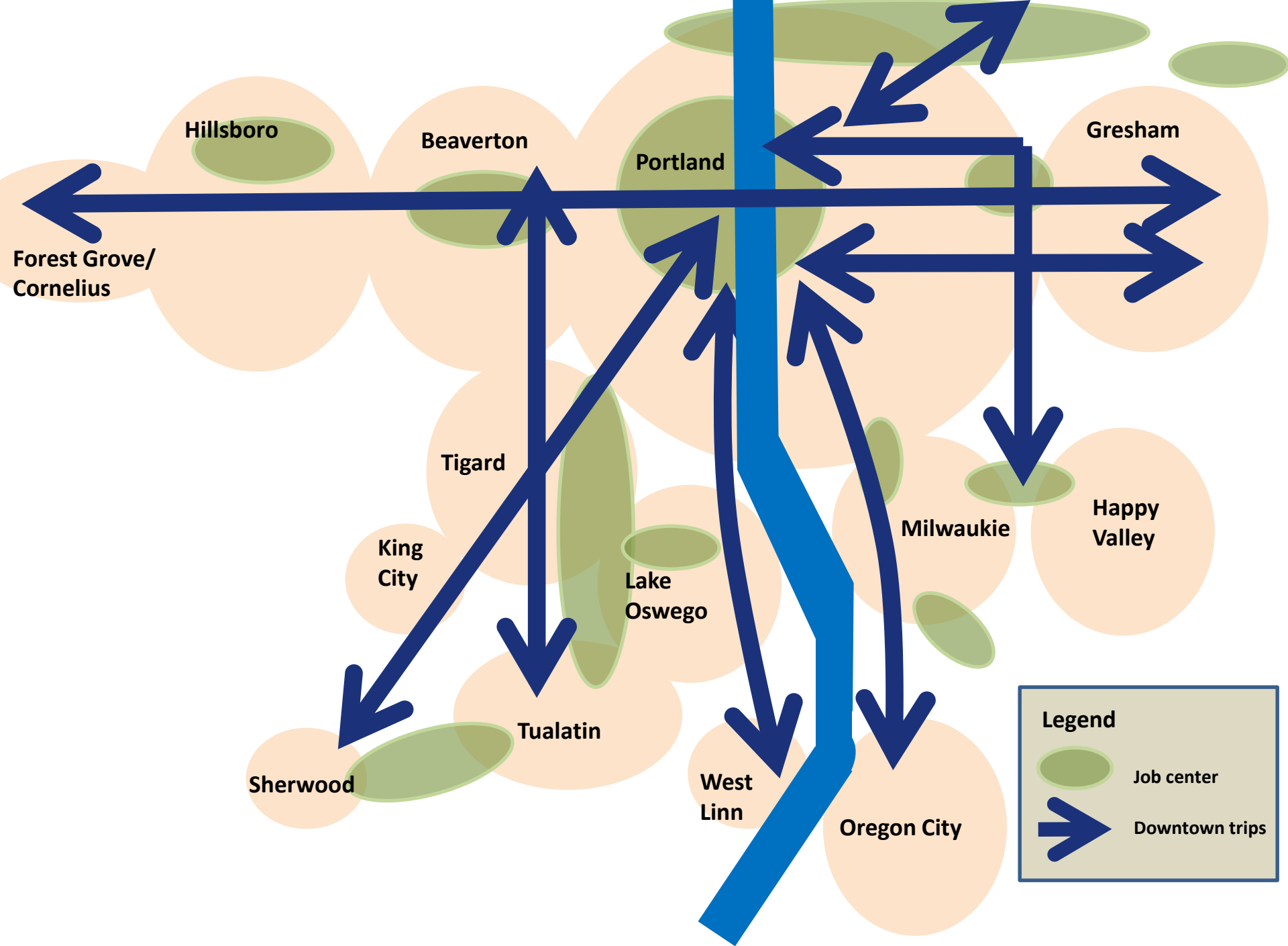
Optimize routes
& schedules

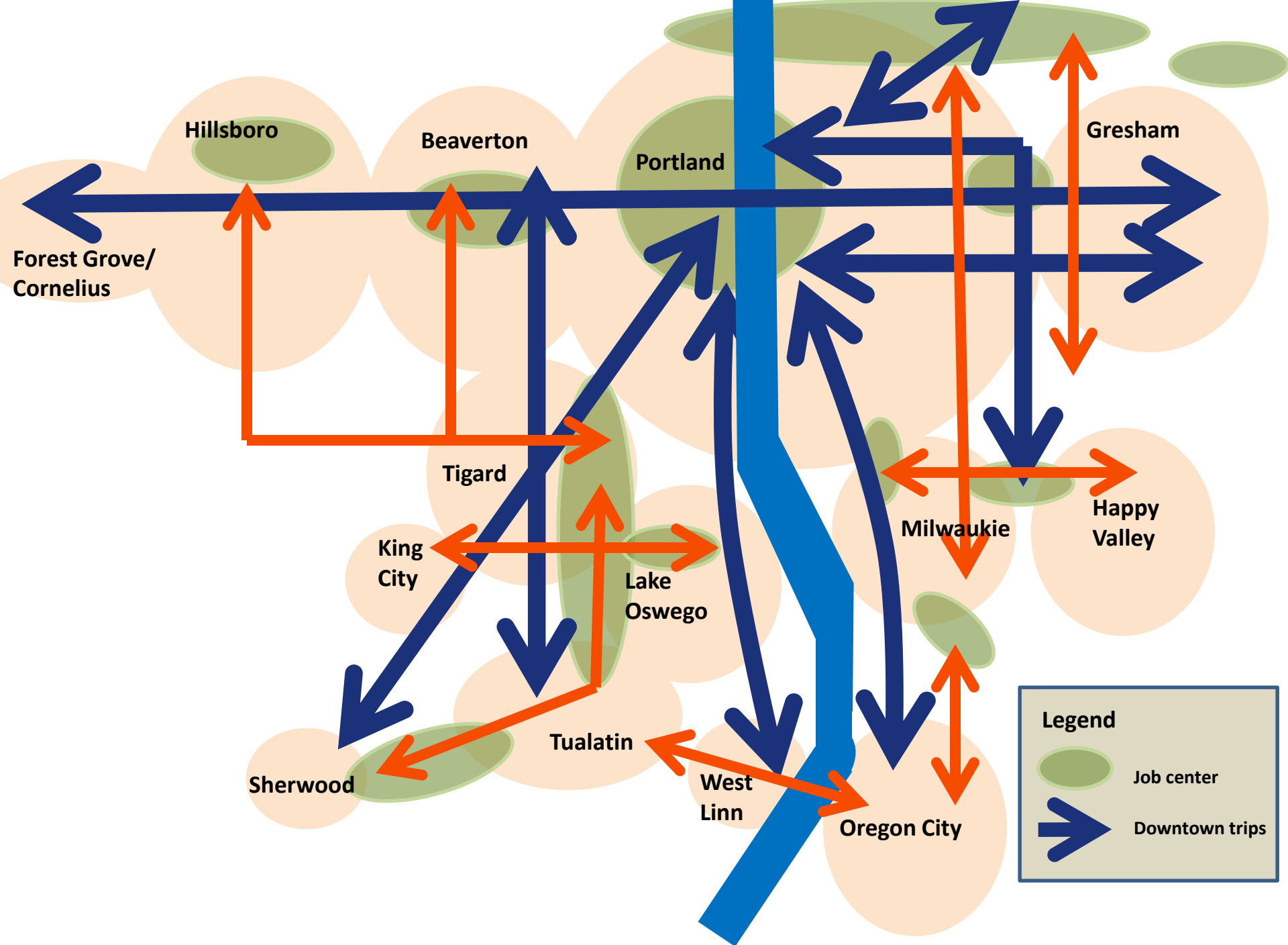
Increase

Increase spans &
frequencies

Add new lines
Reconfigure lines





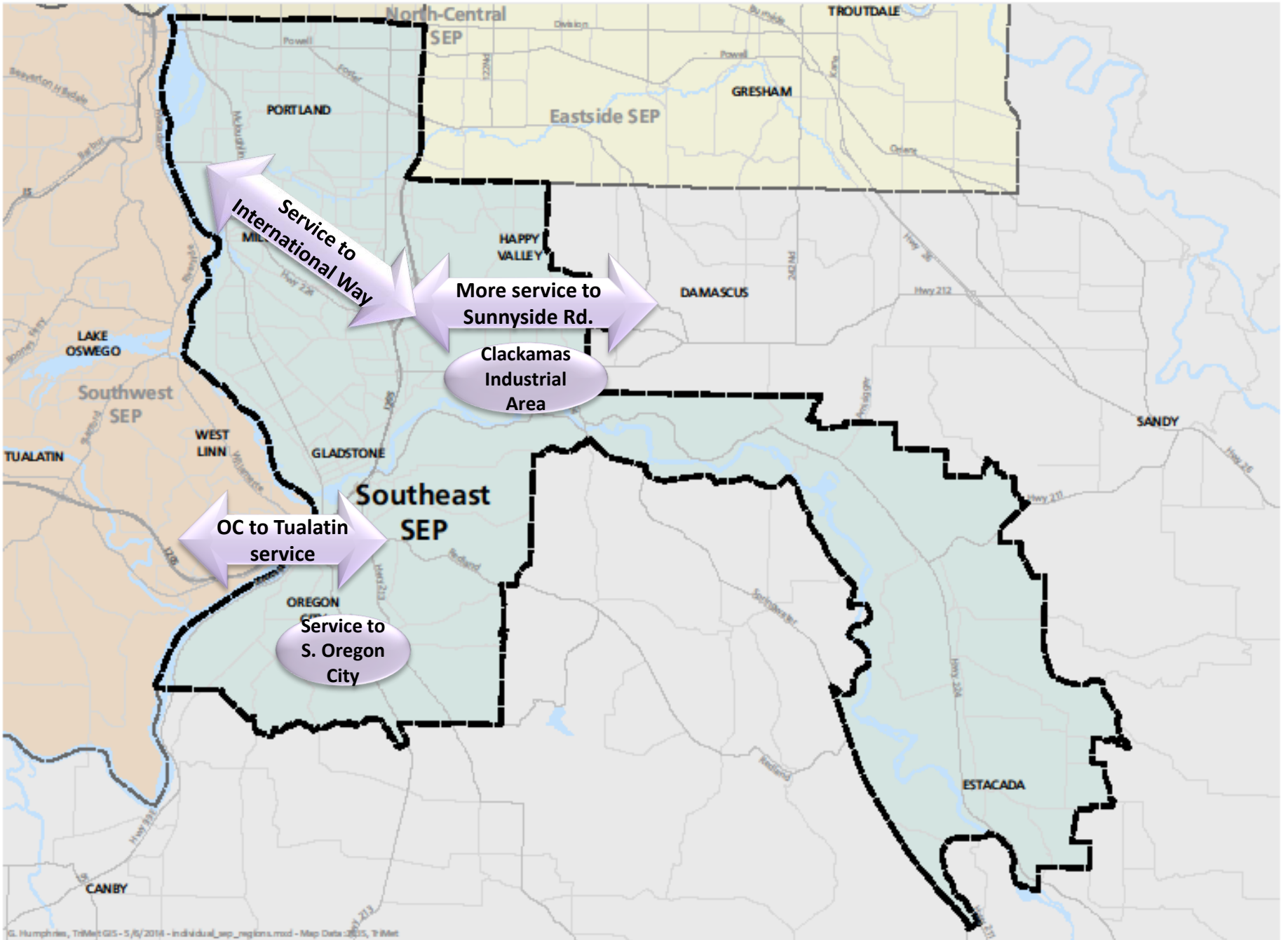




SOUTHEAST



Help make transit better in your community.







trimet.org/southeast



Making Transit Better in Southeast

Draft Vision

We've been talking with riders and community members about improving bus service in Southeast Portland, Estacada, Gladstone, Happy Valley, Milwaukie, Oregon City and Clackamas County. This vision for future bus service takes into account all that we've heard.

We want your feedback!

This draft is intended to be a shared vision, so please review it and give us your thoughts—online at trimet.org/southeast or by calling 503-238-RIDE (7433).

What we heard from the community

We learned from Southeast riders and residents about the challenges they face today and how the region will grow in the future. Based on this, we're proposing more and better bus service to help people get to jobs, education, health care, affordable housing and essential services. Proposed bus service improvements include route changes and extensions, new bus lines, adjusted frequency and better hours of service.

Why Southeast needs better transit

The new MAX Orange Line opens on September 12, 2015, and will travel between Downtown Portland and Milwaukie. There will be improvements to 10 bus lines associated with the MAX Orange Line. However, more and better bus service is needed throughout the Southeast to meet current and future demand.



See map and proposed service improvements

Better Transit in Southeast

Line 70

BETTER SERVICE

This route will be extended for better north-south connections between Downtown Milwaukie and Swan Island and simplified routing on 17th Avenue in Sellwood. The new Line Y will serve 13th Avenue in Sellwood.

Line 43

NEW SERVICE

New east-west service will be introduced between Clackamas Town Center, Sellwood, Barbur Transit Center and Washington Square Mall to improve access to jobs.

Line Y

NEW SERVICE

This new service will connect Southeast Portland and the Columbia Corridor via NE/SE 20th Avenue and improve connections to Sellwood, Eastmoreland, Union Manor, Cleveland High School and the MAX Orange Line.

Line 152

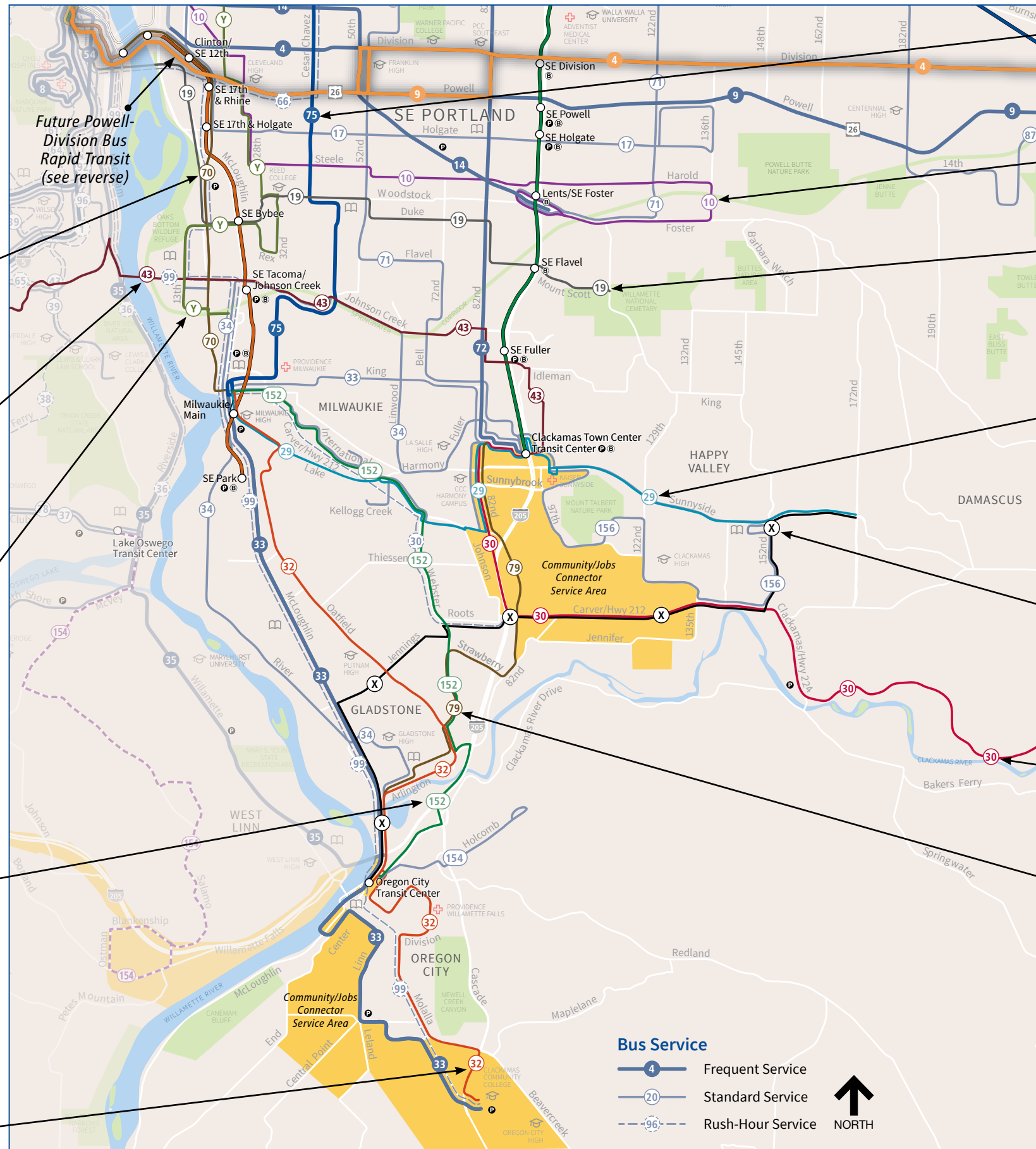
MORE COVERAGE & NEW SERVICE

This route will change to add new service to Oregon City via Webster Road, improving access to jobs in the Milwaukie Industrial Area. Frequency will be increased and hours of service will be added on Saturday. This route will access Milwaukie via SE Washington. Lines 29 and 155 will serve Lake Road and 82nd Avenue to the Clackamas Town Center.

Line 32

MORE SERVICE

Increase weekday frequency and add service on Saturday and Sunday.



Bus improvements related to MAX Orange Line

Changes to bus lines 9, 17, 19, 28, 32, 33, 34, 99 and 154 will take effect on September 13, 2015. See back page for more information.

Line 75

MORE SERVICE

All trips will extend to Milwaukie.

Line 10

MORE SERVICE

Add weekend service.

Line 19

BETTER SERVICE

This route will change to become more efficient between Southeast and Downtown Portland and to improve connections to the MAX Green and Orange lines. The new Line Y will serve Union Manor.

Lines 29 & 155

BETTER SERVICE

These lines will be connected and frequency will increase on Lake Road between 82nd Avenue and Downtown Milwaukie. The line will stay on Lake Road all the way to Downtown Milwaukie. Lines 152 and X will provide service along Webster and Roots roads.

Line X

NEW SERVICE

This new service between Downtown Oregon City and Happy Valley via Jennings Avenue, Highway 212 and Sunnyside Road will provide better access to jobs in the Clackamas Industrial Area.

Line 30

MORE SERVICE

Improve weekend service between Estacada and Downtown Portland.

Line 79

MORE SERVICE

Frequency will increase to improve connections between Downtown Oregon City, Gladstone, the Clackamas Industrial Area and Clackamas Town Center.

Community/Jobs Connector Shuttles

New community/jobs connector shuttles could be implemented in partnership with cities, counties and employers. A Clackamas Industrial Area shuttle is proposed to serve the Clackamas Industrial Area. A South Oregon City shuttle is proposed to serve South Oregon City, Oregon City Transit Center and Clackamas Community College.

Other service enhancements

Bus service changes starting in September 2015 with the new MAX Orange Line include:

Line 9-Powell and Line 17-Holgate: Service will shift from the Ross Island Bridge to the new Tilikum Crossing to avoid congestion and make new connections in Southeast Portland and South Waterfront.

Line 19-Woodstock: Service will start earlier on Saturday and Sunday mornings.

Line 28-Linwood & Line 34-River Rd: These lines will be connected and frequency will increase to about every 35 minutes. The new route will go into Downtown Milwaukie via Linwood Avenue, Johnson Creek Boulevard, Tacoma Street and Main Street.

Line 31-King Rd and Line 33-McLoughlin: These lines will be connected and frequency and hours of service will increase along King Road. The route will be renamed Line 33-McLoughlin/King Road.

Line 32-Oatfield: This line will maintain its existing route to Downtown Milwaukie, where riders can transfer to the MAX Orange Line.

Line 99-McLoughlin Express: This route will include new service to Oregon City in the mornings and to Downtown Portland in the evenings via the Sellwood Bridge once it opens.

Line 154-Willamette/Clackamas Heights: This line will be hourly and include more trips to Clackamas Heights.

For more information, visit catchtheorange.com and trimet.org/buschanges.

Service to Happy Valley and Pleasant Valley

Future service to areas with economic development opportunities in Pleasant Valley and Happy Valley, such as along 172nd Avenue, will be made in coordination with our city and county partners and guided by the timing and scale of future development.



Bus Rapid Transit is coming to Powell and Division

The Powell-Division Transit and Development Project is planning for a future Bus Rapid Transit (BRT) line on sections of Powell Boulevard and Division Street between Downtown Portland and Gresham. The route and station areas for the new line are expected to be confirmed during 2015 and early 2016. An extensive bus service planning effort will identify further adjustments to existing bus service along and intersecting Powell/Division.

For more information, visit oregonmetro.gov/powelldivision.

How you can weigh in

Help make transit better and weigh in on the vision for Southeast bus service online at trimet.org/southeast or by calling 503-238-RIDE (7433).



See where it takes you.

Available in other formats.

150257 • 7/15 • 4M

Service Alert

Service Improvements Fall 2015

August 30

New schedules effective for MAX Blue, Green, Red and Yellow lines

September 1

Honored Citizen fares increase

September 12

MAX Orange Line Opens Grand Opening Celebration

September 13

MAX Orange Line begins regular service

Improved bus service in Southeast Portland and Milwaukie

Frequent Service restored on Sundays

New bus schedules effective

Arriving soon: Better Service!

This fall, we're making some big changes to transit service in the Portland area.

From the highly-anticipated MAX Orange Line and

Tilikum Crossing opening September 12, to more frequent bus service on Sundays, we're investing in better service to make your trips on transit easier and more convenient.

SEPTEMBER 13

15-minute service returns to Frequent Service bus lines on Sundays

Effective September 13, we're bringing back Frequent Service on Sundays, with buses running every 15 minutes or better most of the day.

After the recession in 2008, we had to cut back frequency on buses and MAX due to budget shortfalls. We've been gradually adding back service, and, with this change, we're finally back up to pre-recession service levels.

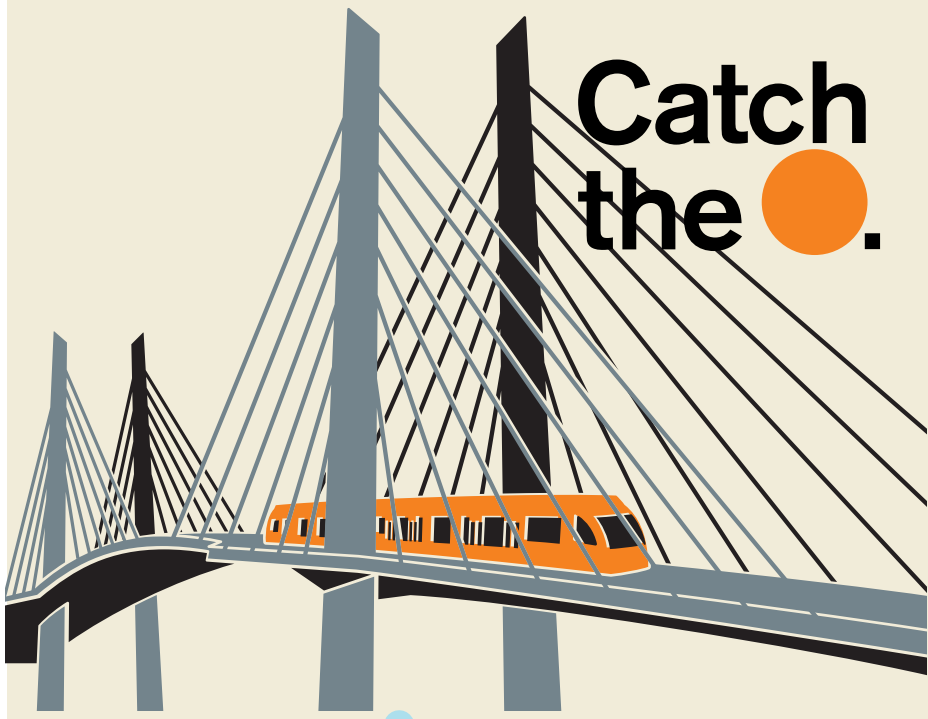
Remember: With more buses throughout the day, schedules will change, so be sure to check the new Sunday timetables.

- 4 Division/Fessenden
- 6 Martin Luther King Jr Blvd
- 8 Jackson Park/NE 15th
- 9 Powell Blvd
- 12 Barbur/Sandy Blvd
- 14 Hawthorne
- 15 Belmont/NW 23rd
- 33 McLoughlin
- 54 Beaverton-Hillsdale Hwy
- 56 Scholls Ferry Rd
- 57 TV Hwy/Forest Grove
- 75 Cesar Chavez/Lombard



➤ Check the new schedule at trimet.org/servicechanges

Catch the .



Introducing MAX Orange Line

SEPTEMBER 12

Orange Line opens and Grand Opening Celebration

Come see, ride free! Join us for a day of adventure and fun with activities and entertainment at many of the newly opened MAX Orange Line stations. Plus, all rides on MAX, TriMet buses, Portland Streetcar and the Aerial Tram will be free!

SEPTEMBER 13

Regular service begins

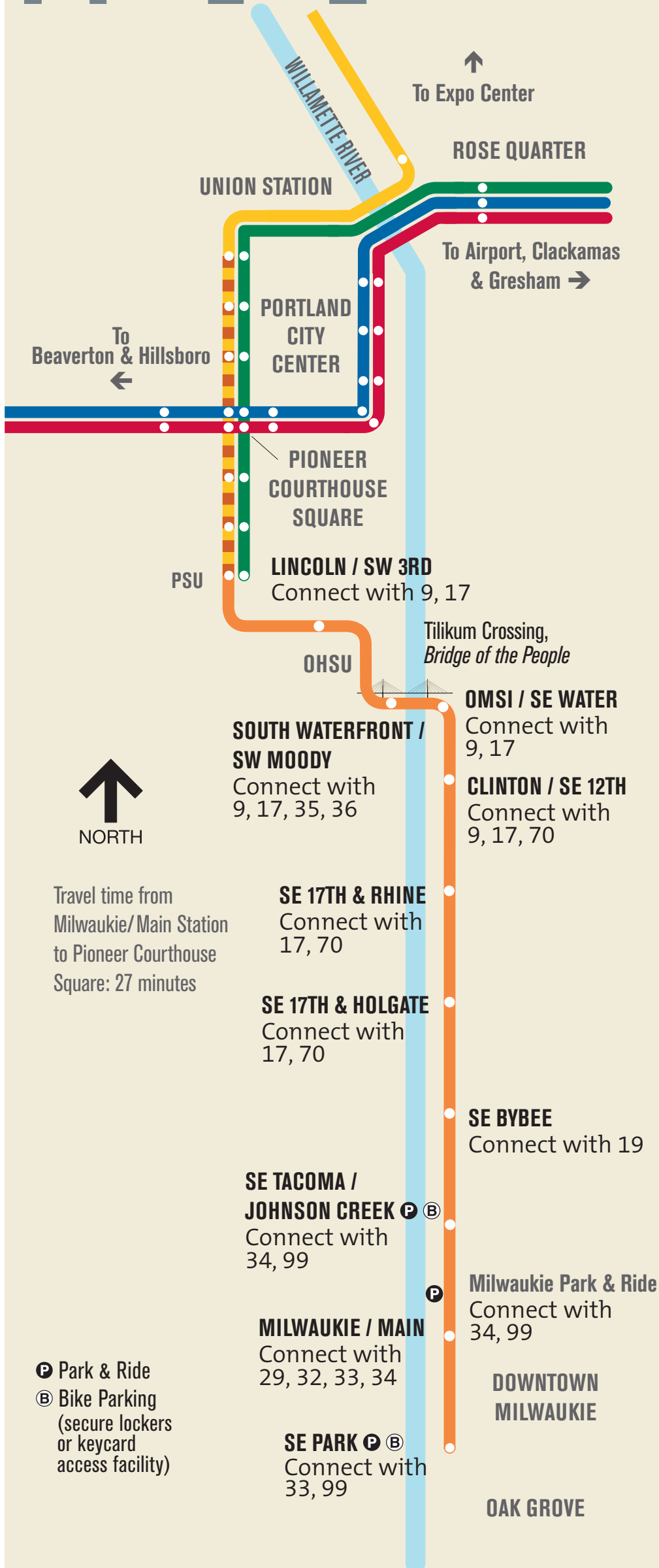
MAX Orange Line, our fifth MAX line, will travel 7.3 miles between PSU, inner Southeast Portland, Milwaukie and Oak Grove in north Clackamas County. Trains will travel across Portland's newest bridge, Tilikum Crossing, *Bridge of the People*, along with buses, streetcars, cyclists and pedestrians.

A one-seat ride between North Portland and Milwaukie

After leaving Lincoln/SW 3rd Station in Downtown Portland, northbound Orange Line trains continue as Yellow Line trains to the Expo Center. Similarly, southbound Yellow Line trains continue as Orange Line trains after leaving Interstate/Rose Quarter Station.

291-Orange Night Bus

Line 291-Orange Night Bus will provide late-night service southbound only from Downtown Portland to SE Park Ave station, shadowing Orange Line service. Buses will serve all MAX stations along 5th Avenue on the Portland Transit Mall (except PSU South/SW 5th & Jackson), then continue south serving stops at or adjacent to Orange Line stations. Two trips will run Monday–Friday and one trip on Saturday and Sunday.



Hours of operation and frequency



	Hours of Operation*	Frequent Service (Every 15 minutes or Better)
Weekdays	About 5 a.m.–midnight	About 5:30 a.m.–9:30 p.m.
Saturday	About 6 a.m.–1 a.m.	About 8 a.m.–9:30 p.m.
Sunday	About 6 a.m.–1 a.m.	About 9:30 a.m.–9 p.m.

* Times are approximate. Additional late-night southbound service provided by bus.

➤ See complete schedules at catchtheorange.com/schedules.

AUGUST 30

Schedule changes for MAX Blue, Green, Red and Yellow lines

On August 30, we're adjusting schedules for MAX Blue, Green, Red and Yellow lines.



Why? The addition of the Orange Line to the MAX system requires some schedule adjustments on the other MAX lines so everything runs efficiently. (Orange Line test trains will also begin running more frequently in what we call "simulated service" on August 30.)

This means that schedules will be changing on all MAX lines—some by several minutes—so be sure to check the new timetables to see if your trips will be affected.

➤ Check the new schedule at trimet.org/servicechanges



SEPTEMBER 1

Honored Citizen fare increase

Effective Tuesday, September 1, Honored Citizen 2½-Hour Tickets will increase from \$1 to \$1.25 and monthly passes from \$26 to \$28.

This is the first time Honored Citizen fares have increased since 2010. This fare increase will help cover the increasing cost of providing transit service, and help us maintain and expand service to meet the transit needs of our growing older adult population.

We have taken measures to reduce the impact on our Honored Citizen riders through our Access Transit program, which provides fares to non-profits and community-based organizations at a lower cost or at no cost, which they then distribute to their low-income clients.

Note: You can still use your old Honored Citizen tickets without paying extra.



New Honored Citizen fares effective September 1

2½-Hour Ticket	\$1.25
1-Day Pass	\$2.50
7-Day Pass	\$7.50
14-Day Pass	\$14.50
1-Month/30-Day Pass	\$28
1-Year Pass	\$308

Other bus service improvements

15 Belmont/NW 23rd

Line 15 will return to regular route between Southeast Portland and Gateway Transit Center, via SE Belmont Street, the Adventist Hospital and E 102nd Avenue. The last day for temporary Line 115-Cherry Blossom Loop will be September 12. Schedule times at Gateway Transit Center will shift by up to 10 minutes. The 5:35 a.m. trip from SW Washington & 5th, now leaves at 5:33 a.m. and goes to NW Yeon & 44th. Some trips on Sunday will be extended to NW Yeon & 44th.

18 Hillside

Schedules will be adjusted to help students and commuters make connections. Trip times will have significant changes.

29 Lake/Webster Rd

Schedules will be adjusted to improve connections and better match traffic conditions. Trips times will have significant changes.

30 Estacada

On weekdays, schedule will have significant trip time changes to improve connections and better match traffic conditions.

63 Washington Park/Arlington Hts

Schedules will be adjusted to help students and commuters make connections. Trip times will have significant changes.

67 Bethany/158th

On weekdays, two evening trips will change. The 8:47 p.m. trip to Merlo Rd/SW 158th MAX Station from PCC Rock Creek departs 13 minutes later. The 9:07 p.m. trip to PCC Rock Creek from Merlo Rd/SW 158th MAX Station departs 10 minutes later.

70 12th/NE 33rd Ave

Sunday schedules will be adjusted to better match traffic conditions and ridership. Trip times will have significant changes.

79 Clackamas/Oregon City

When ODOT construction is complete end of August/early September, Line 79 will return to regular route between Downtown Gladstone and Clackamas Town Center, returning service along Webster Road and Strawberry Lane. At that time, the temporary Line 179-Webster/Oatfield will be discontinued. You can get updates at trimet.org/line79detour. Weekday, Saturday and Sunday schedules will be adjusted and trip times will change significantly.

83 Washington Park Loop

Daily service for the seasonal Line 83 service ends on Labor Day, September 7. Starting September 12, Line 83 will run weekends only through October 25.

93 Tigard/Sherwood

On Sunday, schedules will be adjusted to improve connections with the Line 12. Trip times will change significantly.

155 Sunnyside

Weekday, Saturday and Sunday schedules will be adjusted to better match traffic conditions and ridership. Trip times will change significantly.

156 Mather Rd

Schedules will be adjusted to better match traffic conditions. In the morning and evening, most trips will leave earlier than the current schedule. Mid-day trip times will have significant changes.

➤ Check the new schedule at trimet.org/servicechanges

SEPTEMBER 13

Bus service improvements in Southeast Portland and Milwaukie

We're adjusting several bus routes, and adding more frequency and earlier/later service—for better connections and an easier ride.

9 Powell Blvd will move from the Ross Island Bridge to Tilikum Crossing, *Bridge of the People*, to avoid congestion and make new connections in SE Portland and the South Waterfront neighborhood. On weekdays, Frequent Service will be extended along the route, running between SE Powell & 98th and Gresham Transit Center most of the day.

Frequent Service will be also restored on Sundays with buses coming every 15 minutes most of the day. Riders will be able to make transfers with the MAX Orange Line at the OMSI/SE Water Ave, South Waterfront/SW Moody Ave or Lincoln St/SW 3rd Ave stations.

17 Holgate/Broadway will move from the Ross Island Bridge to Tilikum Crossing, *Bridge of the People*, to avoid congestion and make new connections in SE Portland and the South Waterfront neighborhood. No changes will be made to the Broadway section of the route.

Buses will maintain the existing frequency, days and hours of service, but schedules will change for all days. On weekday mornings, five rush-hour trips from NW Broadway & Irving to NE Saratoga & 27th will shift times. Riders will be able to make transfers with the MAX Orange Line at the SE 17th Ave & Holgate, SE 17th Ave & Rhine St, OMSI/SE Water Ave, South Waterfront/SW Moody Ave or Lincoln St/SW 3rd Ave stations.

19 Woodstock/Glisan service will start earlier on Saturday and Sunday mornings, with trips beginning around 8 a.m. Riders will be able to connect with the MAX Orange Line at the SE Bybee Blvd Station. No changes will be made to the Glisan section of the route.

28 Linwood

See 34-Linwood/River Rd.

31 King Rd

See 33-McLoughlin/King Rd.

32 Oatfield will run between Clackamas Community College and Downtown Milwaukie on weekdays, no longer traveling into Portland City Center. Buses will maintain the existing frequency, days and hours of service. Trip times will change. Riders will be able to connect with the Orange Line at the Milwaukie/Main St Station.

33 McLoughlin/King Rd: 31-King Rd and 33-McLoughlin will combine to become this new route. The new route will run between Clackamas Community

College and Clackamas Town Center, traveling through Downtown Milwaukie and no longer traveling into Portland City Center. There will be more service through Oregon City. Frequency and hours of service will increase along King Road (to line up with most service along McLoughlin Boulevard). Additionally, Frequent Service will be restored on Sundays along McLoughlin Blvd. Riders will be able to connect with the MAX Orange Line at the Milwaukie/Main St or SE Park Ave stations. Bus stops for lines 33, 34 and 154 will change at Oregon City Transit Center.

34 Linwood/River Rd: 28-Linwood and 34-River Rd will combine to become this new route. Between Oregon City and Downtown Milwaukie the route remains the same. Between Downtown Milwaukie and Clackamas Town Center, buses will connect with the Orange Line at the SE Tacoma St/Johnson Creek Station, continuing along Johnson Creek Boulevard and Linwood Road. Additionally, buses will now serve the Milwaukie Park & Ride after serving Downtown Milwaukie. Trips to Clackamas Heights will instead be served by the Line 154-Willamette/Clackamas Heights. The new Line 34 will run twice as frequently as the 28 and 34 do now—about every 35 minutes. Trip times will change. Buses will maintain the existing days and hours of service (weekdays about 6 a.m. to 7:30 p.m.). Riders will be also able to connect with the Orange Line at the Milwaukie/Main St Station.

Bus stops for lines 33, 34 and 154 will change at Oregon City Transit Center.

99 Macadam/McLoughlin will replace **99-McLoughlin Express**. The route will change to add service and stops along SE Tacoma Street. Additionally, the route will cross the new Sellwood Bridge (when it opens) and serve Macadam Avenue. The new service will run both directions on weekday mornings from about 5:30 to 8:45 a.m. and in the evening from about 3 to 7 p.m., adding trips to Oregon City and Clackamas Community College in the mornings and to Portland City Center in the evenings. Riders will be able to make transfers to the MAX Orange Line at the SE Park Ave or SE Tacoma St/Johnson Creek stations.

154 Willamette/Clackamas Heights will extend from Oregon City out to Clackamas Heights, with more service along Abernathy Road and Holcomb Boulevard combining with part of the Line 34.

Bus stops for lines 33, 34 and 154 will change at Oregon City Transit Center.

➤ Check the new schedule and new route maps at trimet.org/buschanges

TRIP TOOLS

Plan your trip at trimet.org

Get step-by-step directions, including the best walking or biking route to the stop or station.

Pay your fare with your phone

Buy and use tickets and passes instantly on your Android or iPhone—anywhere, anytime. trimet.org/app

Get updates by email

Sign up for email updates at trimet.org/email to get the latest service updates and alerts.

TransitTracker

Arrivals by web
trimet.org

Arrivals by text
Send Stop ID # to 27299

Arrivals by phone
503-238-RIDE (7433)

