

CLACKAMAS COUNTY BOARD OF COUNTY COMMISSIONERS

Policy Session Worksheet

Presentation Date: February 11, 2025 **Approx. Start Time:** 2:00PM **Approx. Length:** 30 mins

Presentation Title: Sunrise Corridor Community Visioning Project Update

Department: Transportation and Development (DTD)

Presenters: Dan Johnson, DTD Director; Jamie Stasny, Transportation & Land Use Policy Manager

WHAT ACTION ARE YOU REQUESTING FROM THE BOARD?

The Board of County Commissioners will receive a presentation summarizing the work to date on the Sunrise Corridor Community Visioning Project. No action is being requested. This Policy Session is informational only.

EXECUTIVE SUMMARY:

In 2021, Clackamas County was awarded \$4 million from the Oregon Legislature (HB 5006) to develop a visioning concept for the Sunrise Gateway Corridor by engaging with the people who live, work and travel through the area to ensure the community will thrive. Clackamas County, Happy Valley, ODOT and Metro have worked collaboratively to implement this project over the past two years. The project is expected to be completed by summer 2025.

The intent is to:

- Identify and document a clear, community-supported vision and recommend actions for land use, housing, community and environmental health, the transportation system and other infrastructure,
- Identify clear, actionable steps to implement the vision in coming years, and
- Inform future infrastructure, health and economic investments needed to support emerging urban areas in Happy Valley as well as east-west connections through Clackamas County.

The project area covers approximately five square miles in unincorporated Clackamas County and the City of Happy Valley. The area is bordered by the Clackamas River on the south, the bluff on the north, I-205 to the west and 172nd Avenue to the east.



BACKGROUND:

Previous Board Action

In April 2021 the Board adopted the Sunrise Corridor Community Visioning Plan as a legislative priority. In June 2021 the state legislature approved \$4 million to fund the Sunrise Corridor Community Visioning plan. In 2022 the Board approved the contract to allocate funding for consultant support.

FINANCIAL IMPLICATIONS (current year and ongoing):

Is this item in your current budget? YES NO

What is the cost? **\$4,000,000**

What is the funding source? **Legislatively-directed CARES Act**

STRATEGIC PLAN ALIGNMENT:

This item relates to all five of the county's Performance Clackamas goals:

- o Build public trust through good government;
- o Grow a vibrant economy;
- o Build a strong infrastructure;
- o Ensure safe, healthy, and secure communities; and
- o Honor, utilize, promote, and invest in our natural resources.

LEGAL/POLICY REQUIREMENTS:

N/A

PUBLIC/GOVERNMENTAL PARTICIPATION:

Clackamas County is leading this project in partnership with the City of Happy Valley, ODOT and Metro. Other agencies, including TriMet, are participating and partnering on the work. Extensive and inclusive public participation and community engagement are at the heart of the vision process.

OPTIONS:

N/A

RECOMMENDATION:

N/A, Informational Only.

ATTACHMENTS:

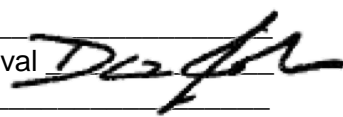
Attachment A: Sunrise Corridor Community Visioning Presentation

SUBMITTED BY:

Division Director/Head Approval _____

Department Director/Head Approval _____

County Administrator Approval _____



For information on this issue or copies of attachments, please contact Jamie Stasny at JStasny@clackamas.us or 971-678-6406

Sunrise Corridor Community Visioning Project Update

Board of County Commissioners Policy Session

February 11, 2025



Clackamas
County



Happy Valley



Metro



ODOT



BACKGROU

ND

Past Sunrise planning focused solely on transportation.

It began in 1988...when the Sunrise Corridor was added to the [Statewide Transportation Improvement Program](#) (STIP) as an Access Oregon Highway project.

Planning for infrastructure improvements began in the 1980s and has continued on and off ever since.



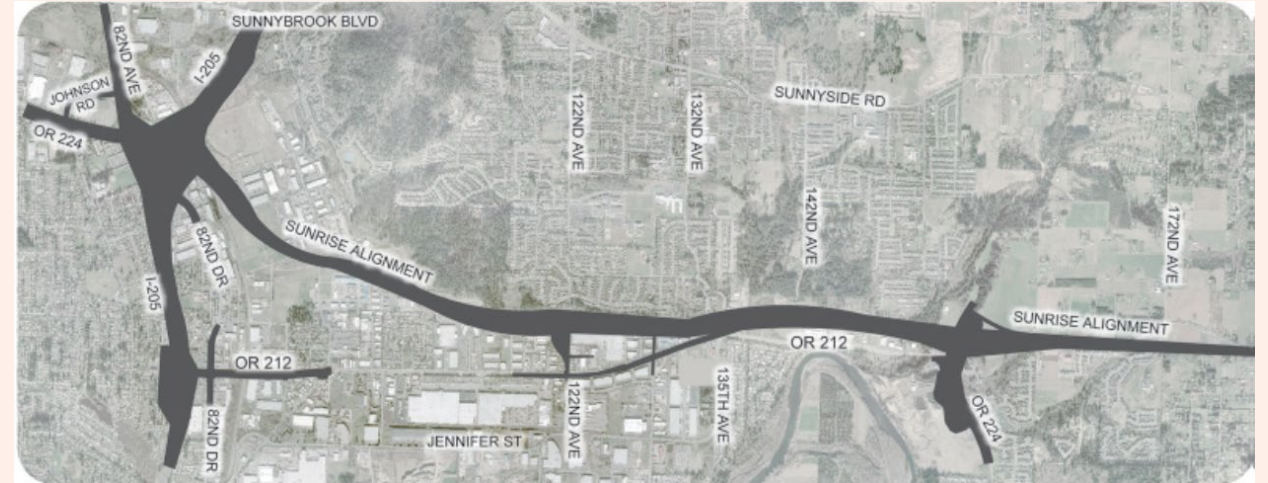
Project vicinity

Sunrise Corridor: 1980s-90s

- 1980s: Began planning I-205 to US 26
- 1993: DEIS (Draft Environmental Impact Statement)
- 1996: Adopted Preferred Alternative
- Clackamas County and ODOT focused on property acquisition through “willing buyer/willing seller” provisions:
 - “Superfund” site and other properties
 - Camp Withycombe property
 - ODOT district office

Sunrise Corridor: FEIS 2004-

- 2004: SDEIS (Supplemental Draft Environmental Impact Statement) begins, I-205 to Rock Creek Junction
- 2005: Congress approves earmark of \$19 million for the Sunrise as part of SAFETEA-LU
- 2008: SDEIS published
- 2009: Preferred Alternative selected
- 2010: FEIS (Final Environmental Impact Statement) published with Preferred Alternative to address:
 - Congestion problems
 - Safety problems
 - Anticipated employment and residential growth
- 2011: Record of Decision (ROD) issued



Sunrise Expressway Phase 1:

2009 Legislature: HB 2001 (Job & Transportation Act)

- Dedicated \$100 million for design & construction
- \$130 million total available
- \$30 million right of way acquired / available
- Practical design emerged: I-205 to 122nd/Hwy 212 intersection

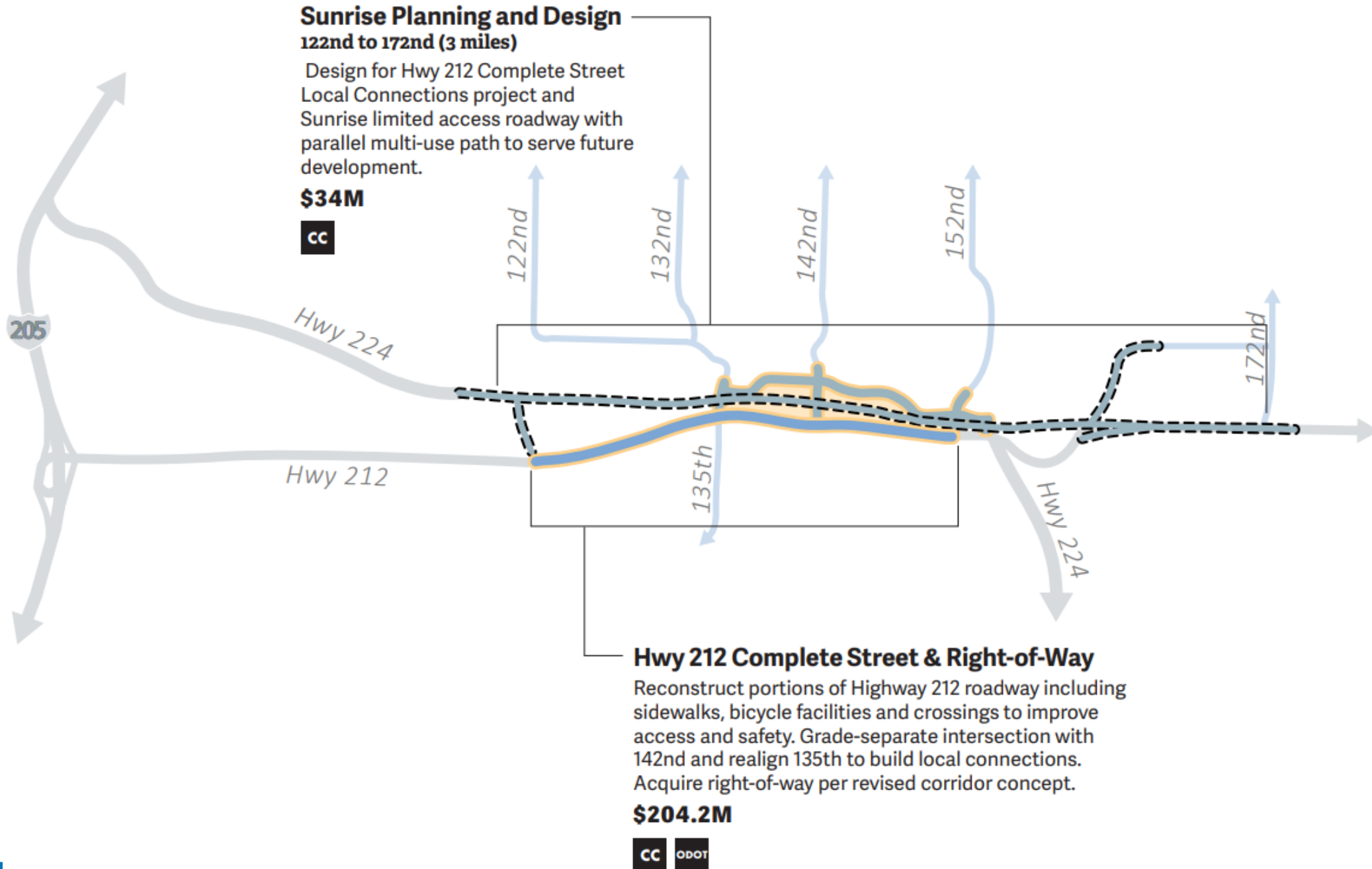


Sunrise Expressway Phase 1: 2013-16

- August 2013: Groundbreaking
- July 2016: Opening
 - 2.15 miles
 - Four lanes
 - \$130 million
- Related projects
 - Connect 212/224 to SE Lawnfield by way of 102nd Ave, Clackamas Rd and Minuteman Way
 - Improve 98th Ct/Lawnfield Rd/97th Ave intersection
 - Extend SE Industrial Way from Mather Rd to Lawnfield Rd on east side of Union Pacific tracks
 - Tolbert Overcrossing



Get Moving 2020. Measure 20-218



Voters rejected the measure Nov. 3, 2020.

Sunrise Corridor Community

Sunrise Corridor Community Visioning

This time is different... we are co-creating a vision for the whole community, including housing, economic opportunities, community health, environment, history, recreation and nature, and how future investments can support that vision.

The Visioning Area includes:



Parks

Small Businesses

7,600 Residents



Schools



Large Businesses

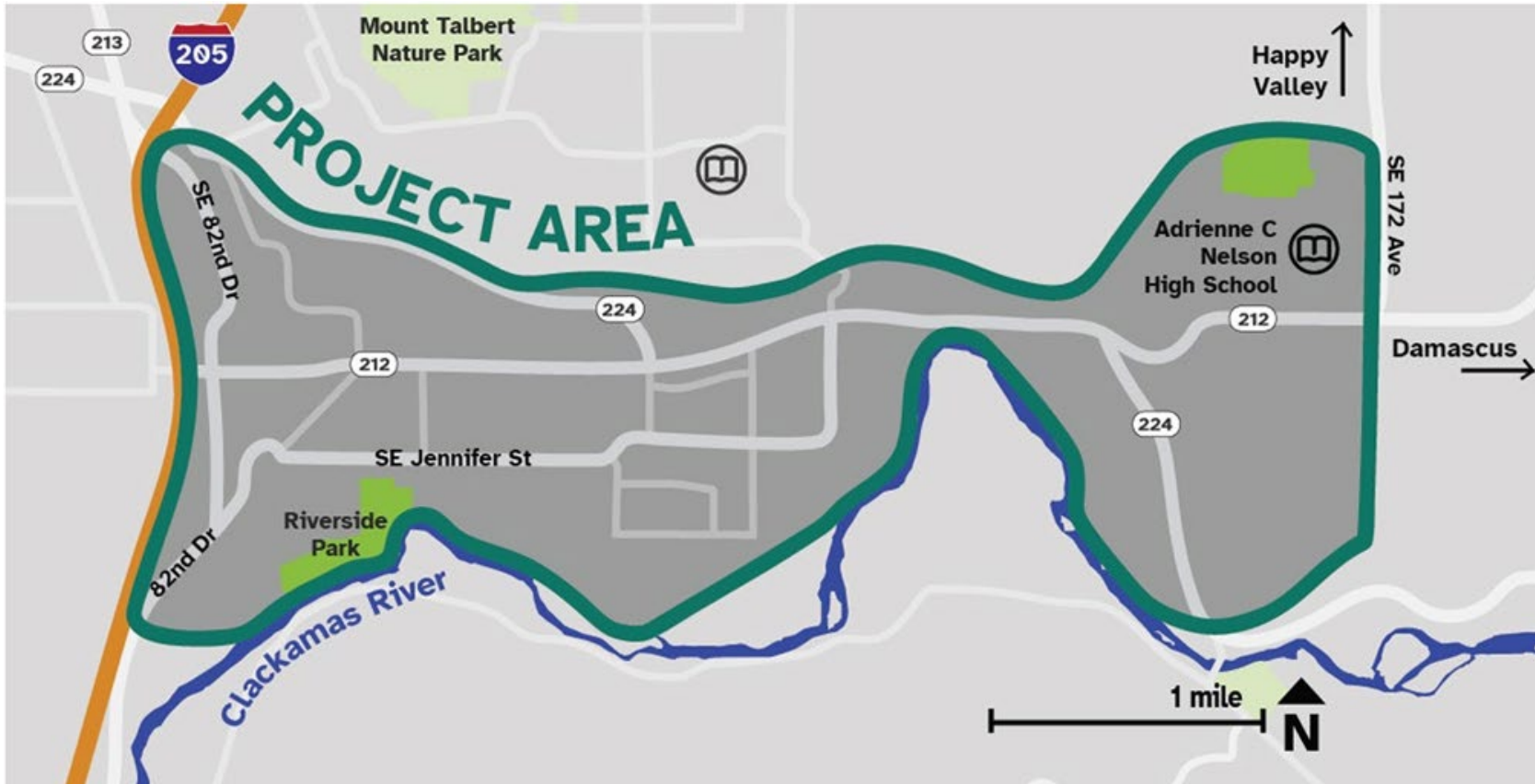
Clackamas River



14,000 Employees



39,000 Vehicles on Hwy 212 Each Day



Over 1,000 People Engaged...

Open House Attendees

280

Survey Responses

866

Stakeholders Interviewed

25

Focus Group Impressions

71

Pop-Up Event Attendees

170

Equitable Engagement Workshop Participants

32

Technical Advisory Committee Members

19

Steering Committee Members

23

Leadership Cohort Members

16

Website Impressions

9088

Open House #3 – Jan. 23, 2025

Sunrise Corridor Community Visioning



Vision Goals

The Sunrise Corridor Community is a thriving place that fosters well-being and belonging, where people enjoy economic success, safe mobility options, access to nature, and seamless connections within the area, as well as access to greater Clackamas County and beyond.

- Create a safe and resilient transportation network for everyone that improves travel opportunities for pedestrians, bicyclists, transit riders, and drivers.
- Enhance health, well-being, and sustainability.
- Promote communities with a full range of amenities to meet the basic needs of all residents.
- Support economic development.
- Preserve and enhance local identity, including historical and cultural assets.
- Create lasting improvements through agency coordination and partnerships.



Draft Actions

Jobs and Economy Places

- Ensure development and design standards align with modern industrial facilities
- Continually assess to reach goals around mixed use, economic development, and access
- Attract, retain, and cultivate firms in key sectors
- Create partnerships between industry and higher education to bolster the STEM workforce pipeline

Neighborhoods &

- Create policies designed to retain and encourage residential and small business uses
- Encourage contiguous land use development patterns and adopt compatibility regulations between uses
- Continue safe and accessible parking design
- Support neighborhood art



Draft Actions

Open Space, Public Health & Environment

- Connect and protect open spaces and natural areas
- Monitor environmental quality
- Reduce heat island effect
- Create and connect new multiuse and nature trails
- Enhance river access points and parks

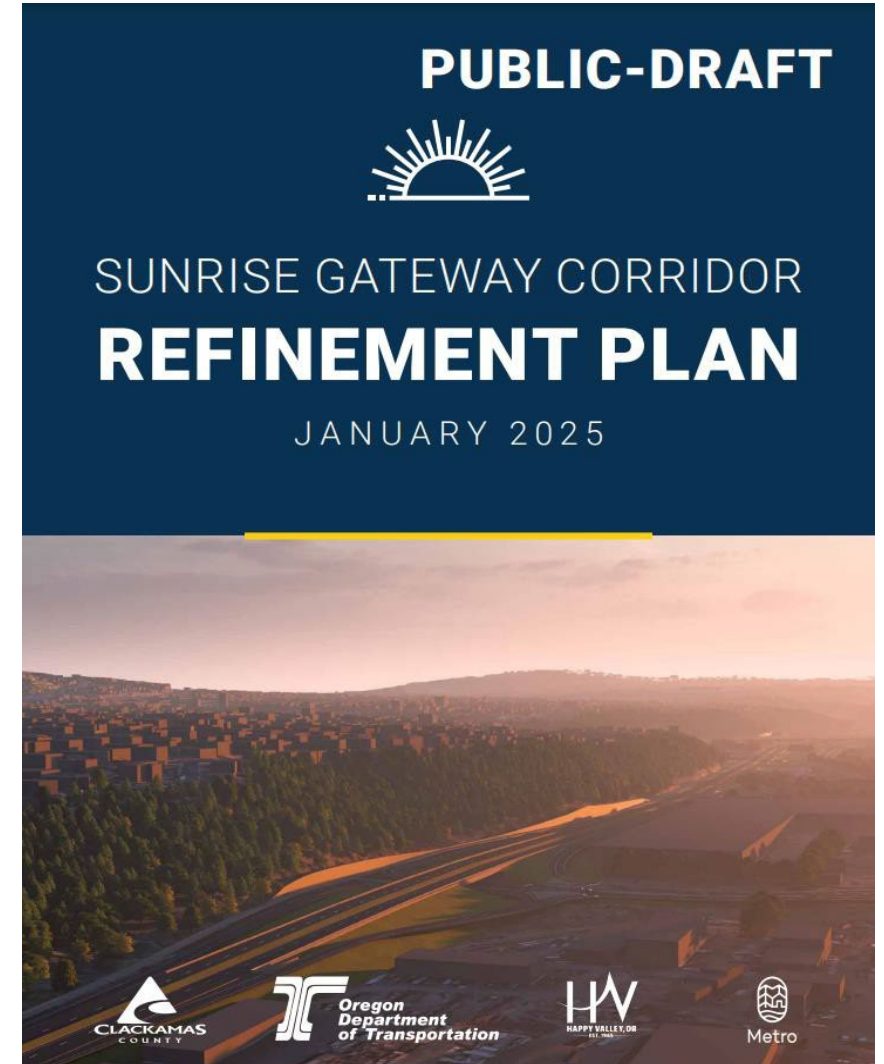
Transportation

- Implement Sunrise Gateway Corridor Refinement Plan
- Enhance SE 82nd Drive Corridor
- Complete I-205 Multiuse Path Gap Plan
- Provide sidewalk infill, bicycle network, and transit connections
- Enhance freight access and parking
- Enhance transit passenger facilities
- Expand Clackamas County Connects Industrial Shuttle
- Support enhanced fixed route service



Draft Sunrise Gateway Corridor Refinement Plan

- Focuses on regional Sunrise facility
- Compares 2010 Final Environmental Impact Statement (FEIS) concept, 2020 Get Moving concept, and current refined concept in three areas:
 - Congestion
 - Safety performance
 - Property Impacts
- Develops staging of improvements and costs by stage
- Identifies next steps in seeking federal approval of the refined concept and implementing the regional facility



Key Features of the DRAFT Sunrise Gateway Corridor Refinement Plan

Exhibit 12. Recommended Sunrise Gateway Corridor Refinement Plan Alternative and Conceptual Construction Staging Plan



Phase 2 - Stage 1 - 135th to 152nd Avenue

- Realign Highway 212-224 to the north with a raised center median and construct multi-use paths along both sides
- Remove the north leg of SE 135th Avenue and develop northbound dual right-turn lanes
- Construct new backage roadway connecting 135th to 152nd and a new signal at SE 142nd Avenue
- Provide sidewalks, bike lanes, and shared-use paths, bus stops and potential micromobility hubs along new and existing facilities
- Remove SE 142nd Avenue signal and construct grade-separated access to Highway 212-224
- Construct multi-lane roundabout and access to Riverbend Mobile Home Park

Phase 2 - Stage 2 - Rock Creek Junction Upgrade

- Construct dual eastbound right-turn lanes
- Construct second southbound receiving lane on Highway 224
- Upgrade traffic signal
- Implement a shared-use path and improved crossings for people walking and biking

Stages 1, 2, and 3 each have independent value and do not depend on the construction of one stage prior to the others.

Phase 2 - Stage 3 - 162nd to 172nd Frontage Road

- Construct new westbound, one-way frontage road between 162nd and 172nd
- Convert Highway 212 to one-way eastbound between 162nd and Armstrong Circle
- Convert Armstrong Circle to one-way westbound
- Signalize the SE 172nd Avenue/Armstrong Circle intersection
- Implement a shared-use path along both frontage roads and SE 162nd Avenue to allow safe passage for children to and from schools
- Consider public roadway connections to the one-way frontage roads

Phase 2 - Stage 4 - Sunrise 122nd to 172nd

- Construct four-lane Sunrise and multi-use path from SE 122nd Avenue to SE 172nd Avenue
- Construct new 122nd/Sunrise diamond interchange
- Modify SE 122nd Avenue/Highway 212 intersection to include dual eastbound left-turn lanes and dual southbound right-turn lanes
- Construct 162nd/172nd Avenue split-diamond interchange ramps
- Construct SE 135 Avenue exclusive pedestrian-bicycle bridge across Sunrise

By the Numbers

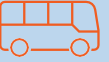


If the Sunrise Gateway Corridor Refinement Plan is implemented, there will be:



More ways to get around

- 7 new miles of sidewalks
- 5 new miles of bike lanes
- 3 new miles of shared-use paths



Better transit access

- 17 existing bus stops improved, and new stops added
- 4 transit routes with better connections and reduced travel times



Improved intersections and travel times

- 6 intersections improved at 122nd, 135th, 142nd, 152nd, Rock Creek Junction, and 172nd
- 6 safer crossings at property accesses
- 3,000 or more hours saved per day travelling on Highway 212 during peak times
- 2 left-turning traffic redirects between 135th and 152nd



More housing, jobs, and public areas

- 32 acres unlocked for stormwater treatment, green space, and environmental restoration
- 27 acres of open space unlocked for access by public
- 16 acres of land unlocked for development



Next Steps

- Review final round of feedback & update vision and refinement plan as appropriate
- Present final plans to Steering Committee in spring for discussion and action
- Present final plans to Board of Commissioners in May/June
- Launch Sunrise community coalition to help prioritize and implement community actions from Vision Plan.

