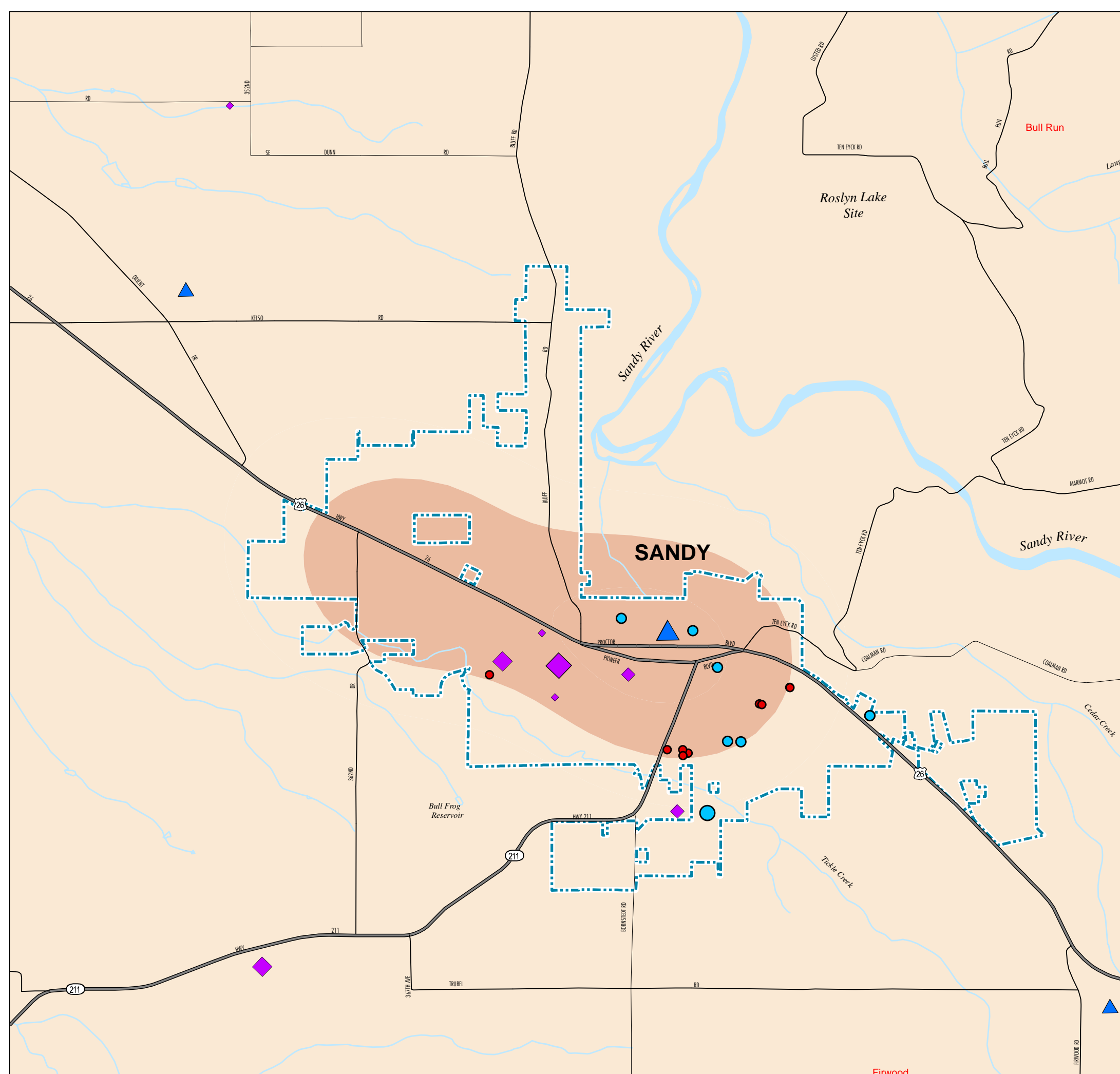
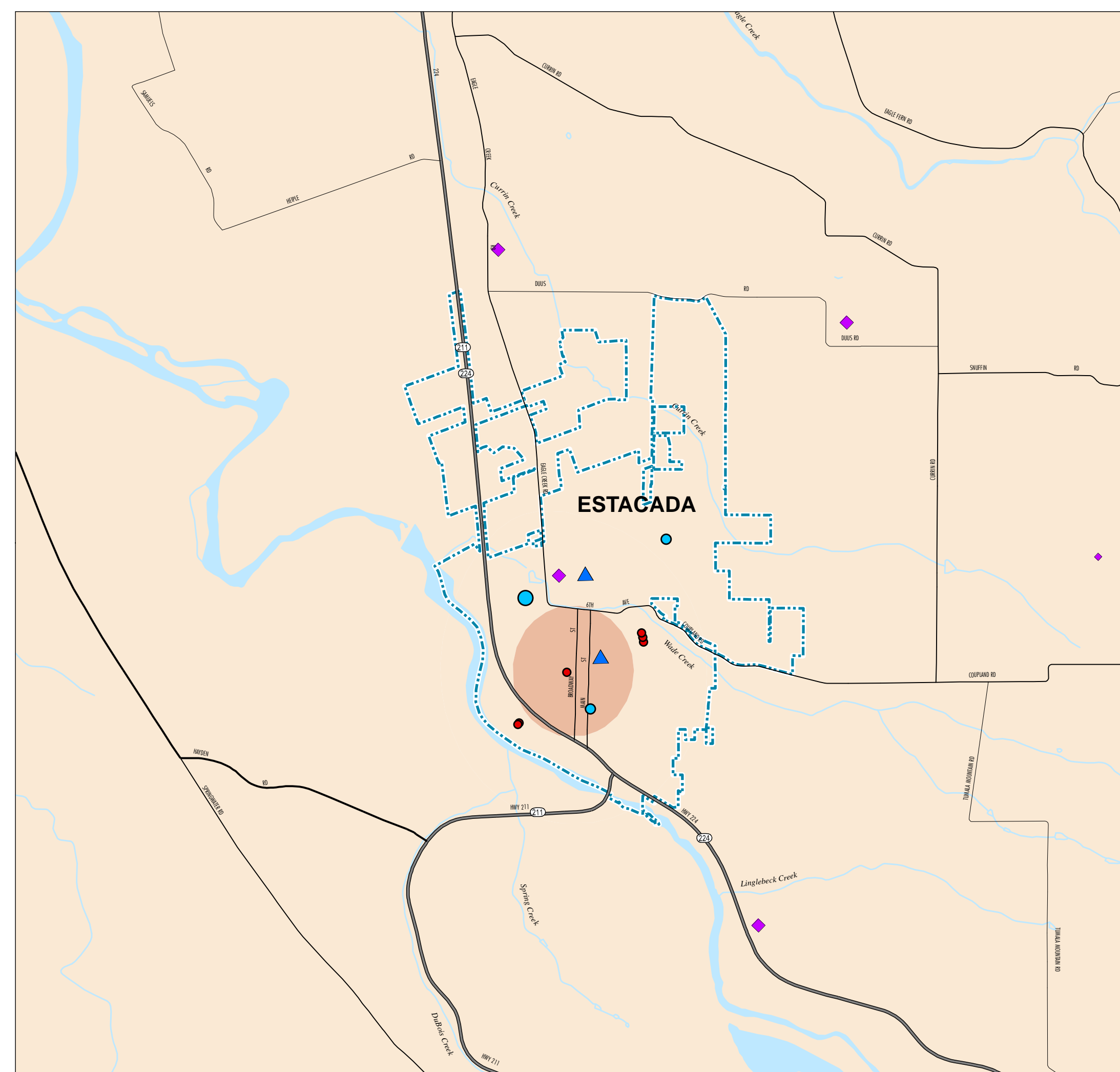
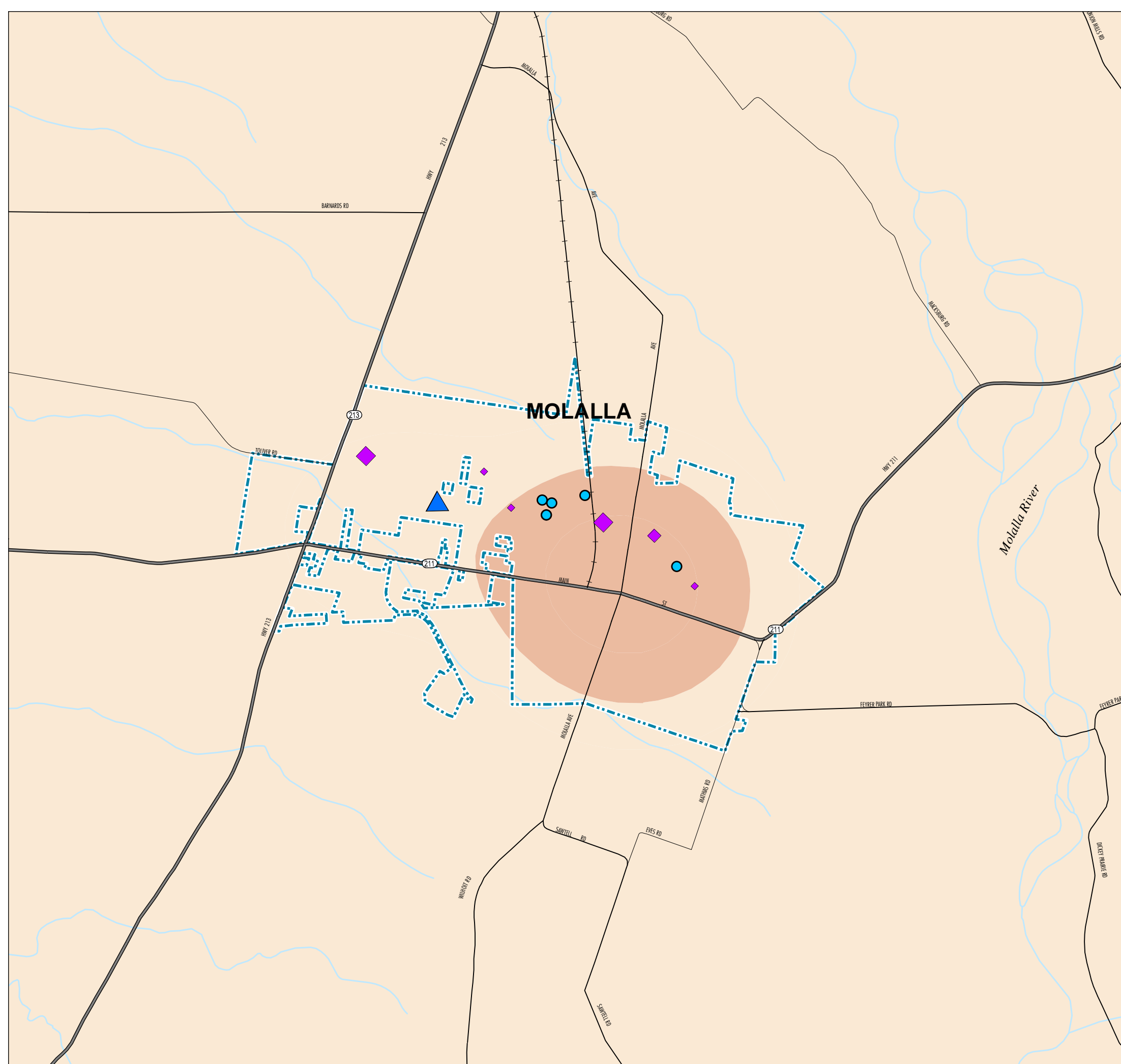
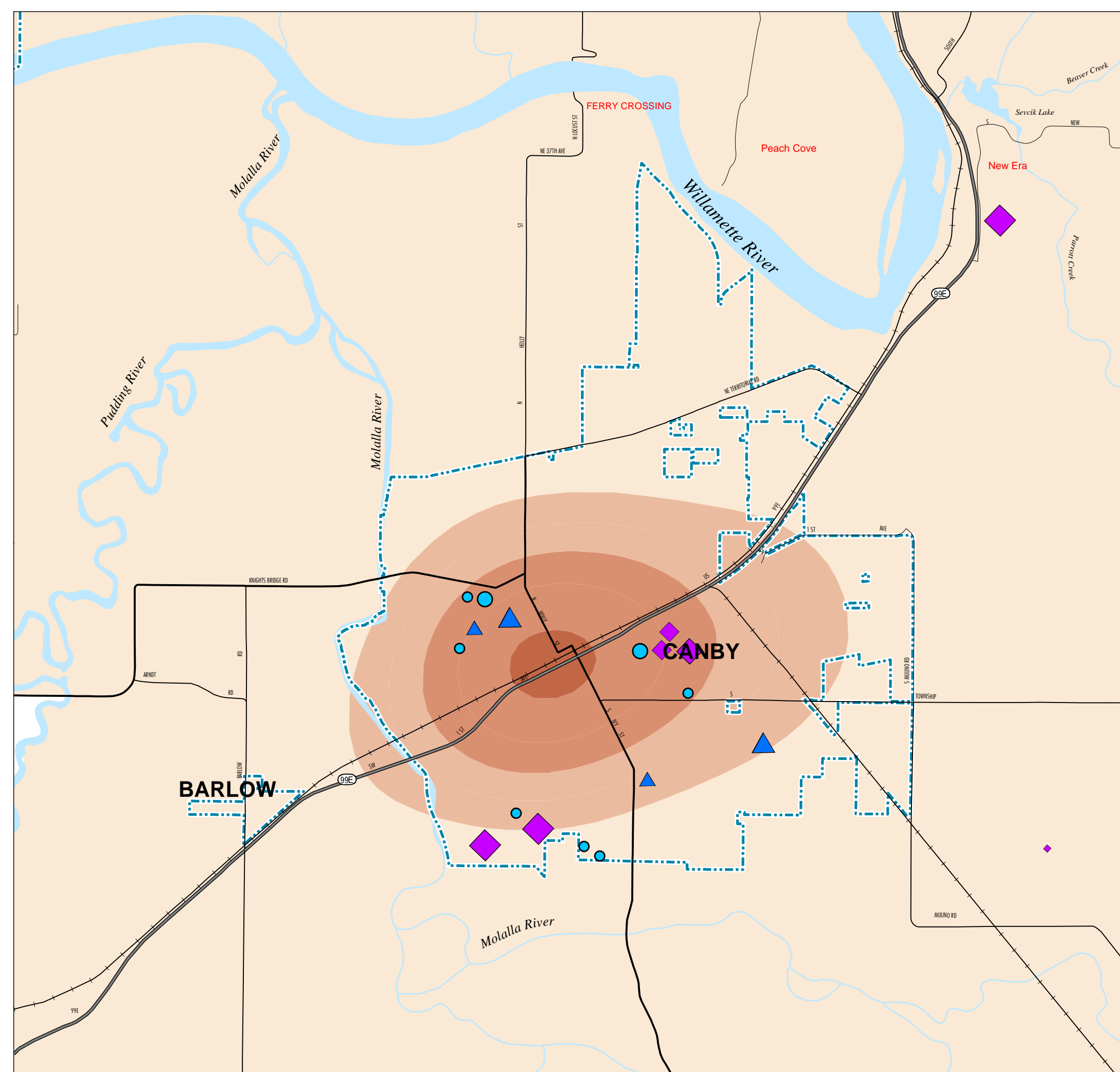
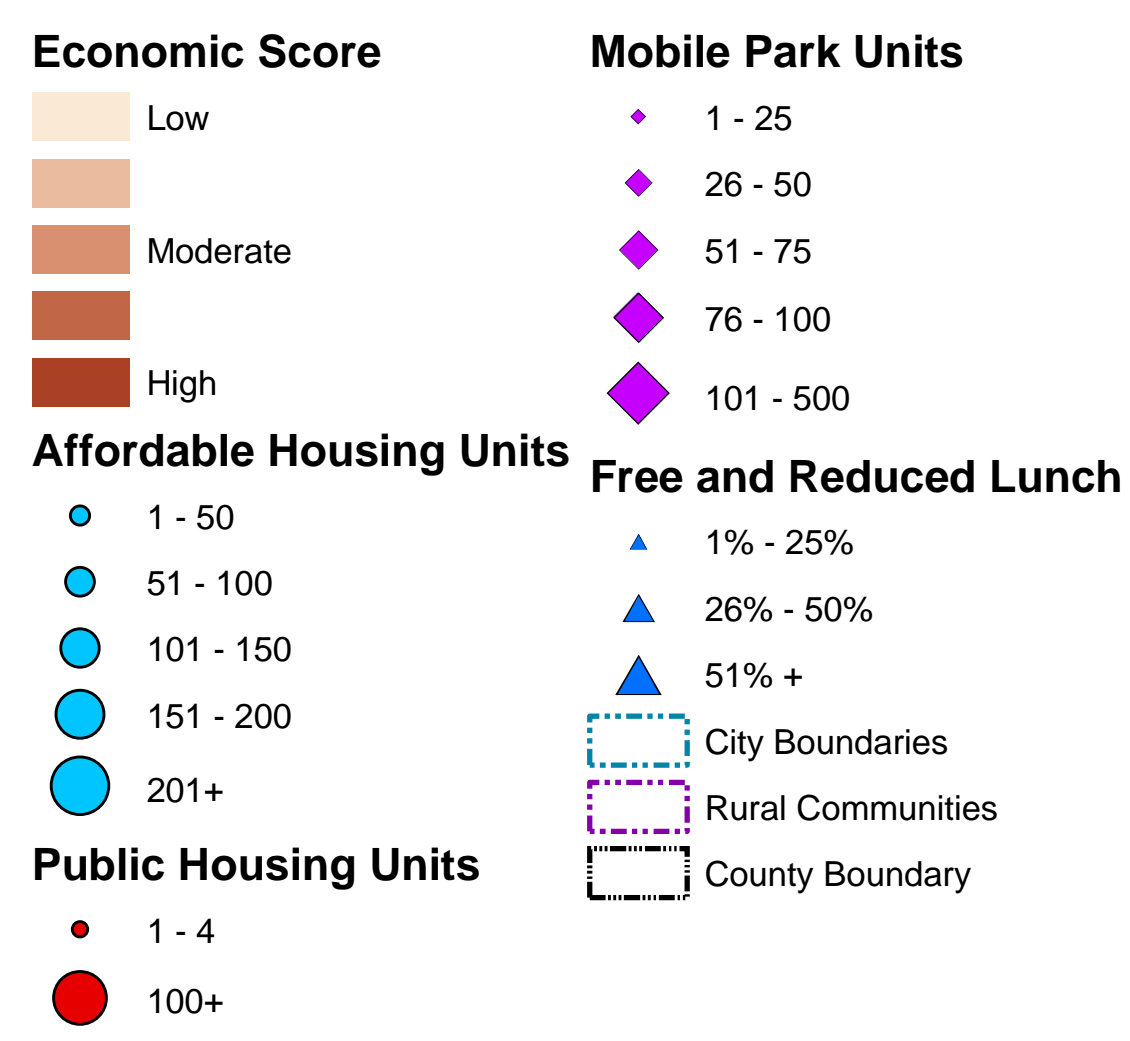
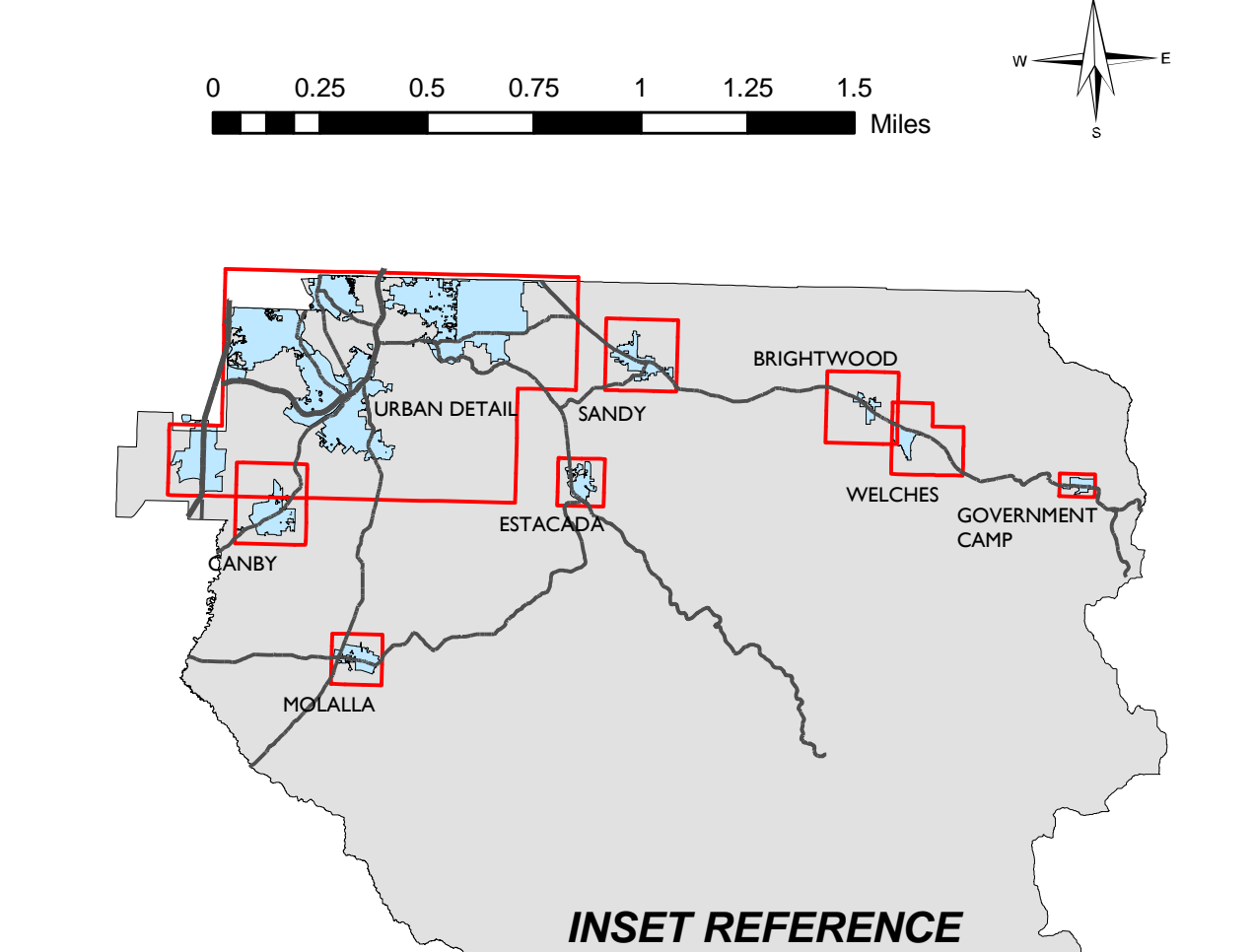
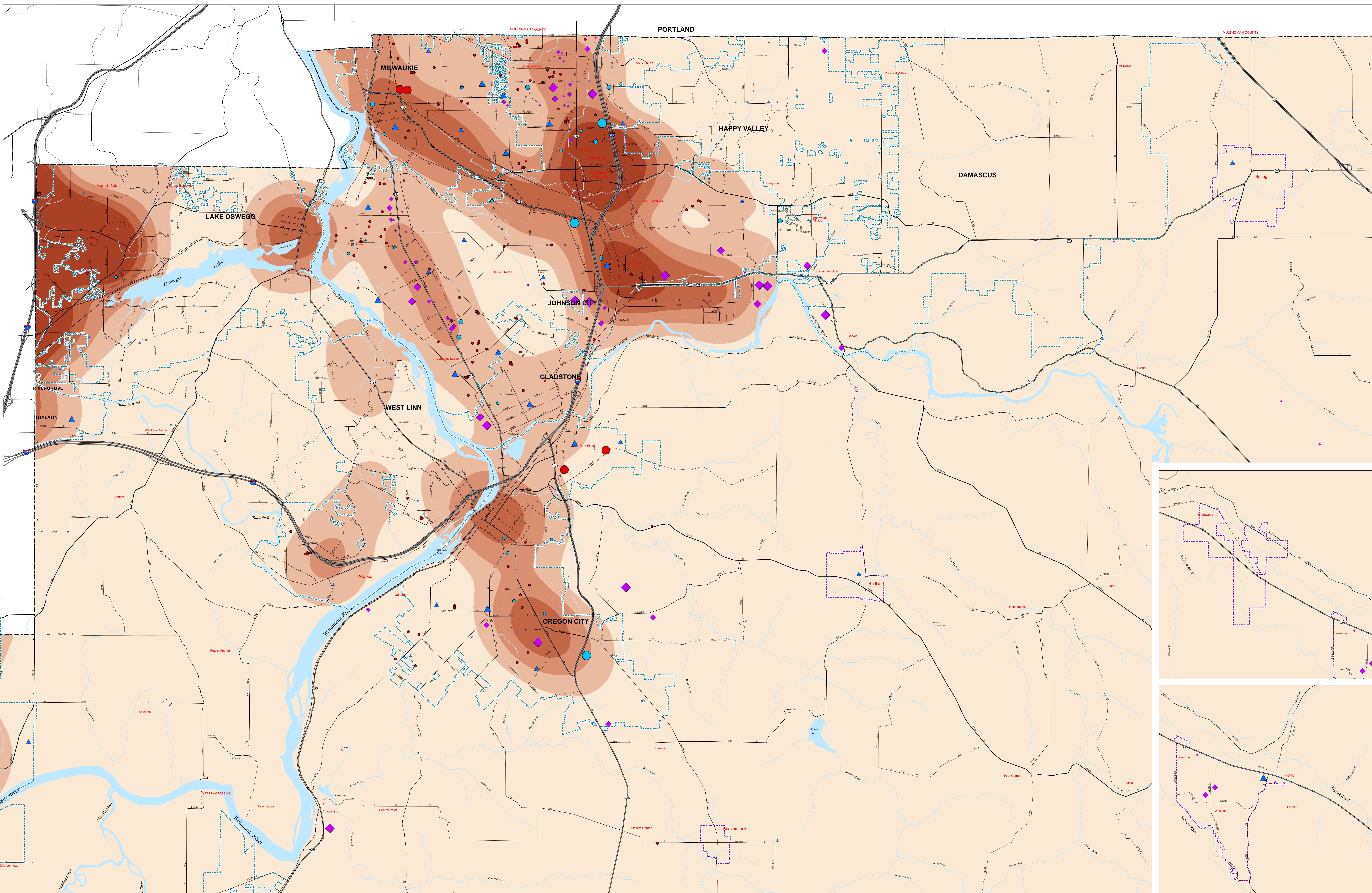


ECONOMIC OPPORTUNITY MAP CLACKAMAS COUNTY



Clackamas County Opportunity Scores - Methodology

Category	Weight	Indicator	Relative Weight
Education	1/5	Average ODE Report Card Score (Elementary, Middle, High)	33%
		Outstanding 3 points, Satisfactory 2 points, In Need of Improvement 1 point	33%
		Proximity to Elementary & Secondary Schools	33%
Proximity to Adult Education Resources	1/5	Junior Colleges	33%
		Colleges, Universities, and Professional Schools	33%
		Business and Vocational Schools	33%
Economic	1/5	Density (by number & size of firms) of higher-wage industries in 1-mile radius	66%
		Density (by number & size of firms) of lower-wage industries in 1-mile radius	33%
		Proximity to Health Care Providers	100%
Health Care	1/5	Primary Care Clinics accepting Oregon Health Plan (OHP)	40%
		Offices of Physicians (Including Mental Health) accepting OHP	40%
		General Medical and Surgical Hospitals	20%
Transportation	1/5	Proximity to Transit	100%
		Light Rail Stops and Transit Centers	40%
		High-Speed Bus Stops (over 80 buses/day)	40%
Community	1/5	Proximity to Parks	33%
		Proximity to Food Sources (except convenience stores)	33%
		Proximity to other Community Resources	33%



CLACKAMAS
GEOGRAPHIC INFORMATION SYSTEMS

DEPARTMENT OF INFORMATION SERVICES/GEOSPATIAL INFORMATION SYSTEMS
521 LIBRARY COURT
OREGON CITY, OREGON 97143

MAP CREATED OCTOBER 2011

