

Duus Road/Eagle Creek Road Intersection Improvements



Eagle Creek - Barton CPO

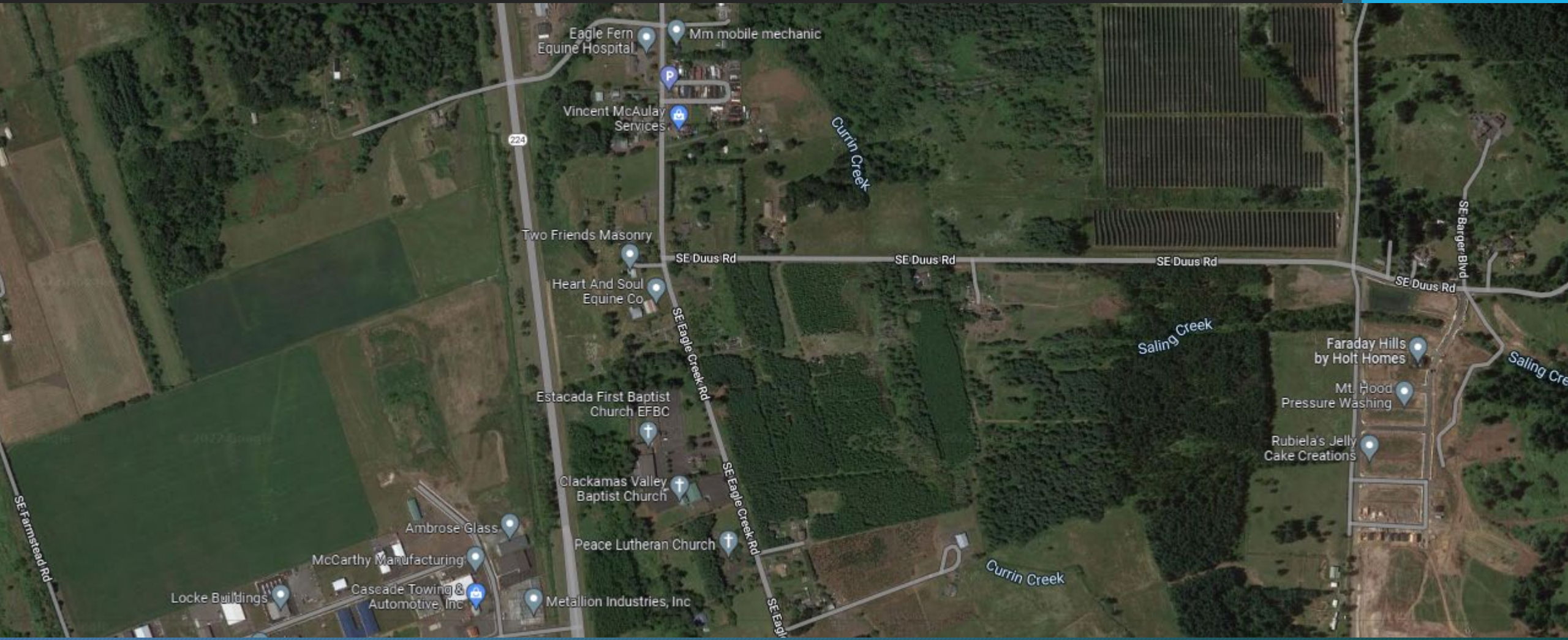
March 14, 2024

Timeline



- Design: July 2022 - Fall 2024
 - 30%, 60%, 90%
 - Work to minimize impacts to adjacent properties
- Right of way (ROW): Winter 2024 - Fall 2024
 - Process
 - ROW staff contacts property owners
 - Staff will follow the ROW acquisition process
- Construction: Fall 2025 - Fall 2026

Area map



What we'll be doing



Reducing delays

- Add southbound left-turn lane on Eagle Creek Road to accommodate growing traffic
- Left-turn lane on Duus Road

Improving safety

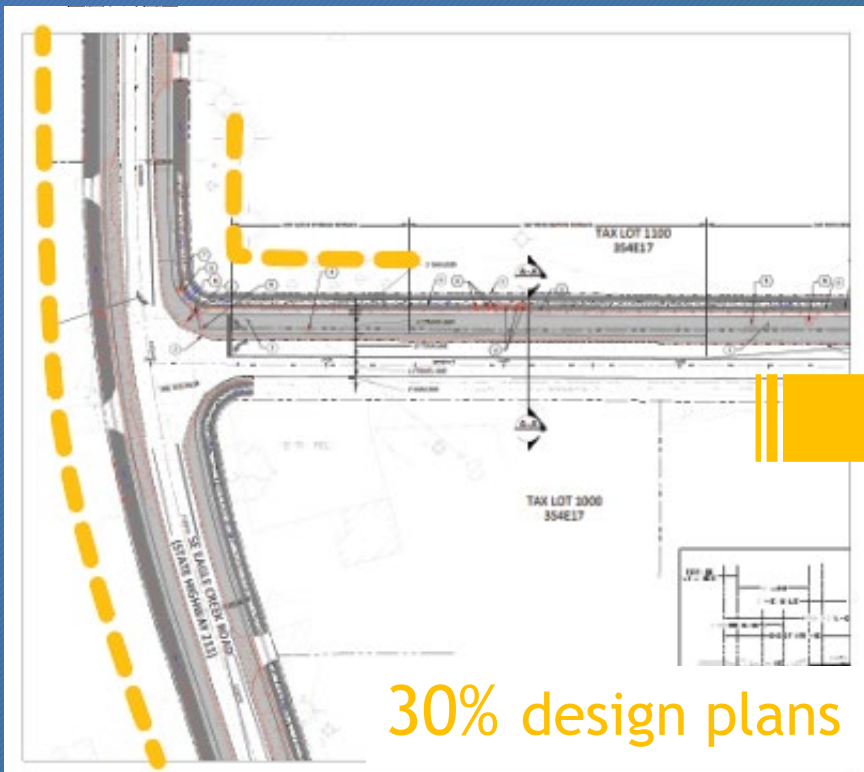
- Reduce conflicts
- Improve sight distance



Project plan: What's changed



Slight project footprint shift and reduced curve on Eagle Creek Road



Community outreach



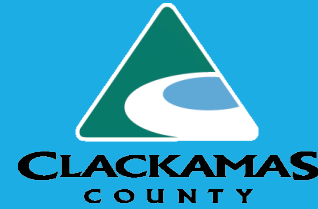
We will share information...

- Website
- CPO meetings
- Social media
- Email to interested parties
- Mailings
- Individual contacts with property owners

We ask you to...

- Join the interested parties list
- Contact us with questions, comments and concerns
- Spread the word to others
- Let us know what's working well and what isn't

Funding: \$1.6 million



1. Community Road Fund

Projects to increase safety, relieve congestion and maintain local roads

- \$30/year vehicle registration fee
- Consistent source of local, countywide revenue to complete projects most important to our residents and businesses
- Can only be used for road projects in Clackamas County

2. System Development Charges

Paid for as development occurs to mitigate impact on existing roads

Nearby CRF projects

- Safety:
 - Amissiger/Hwy 221 Intersection Improvements
 - 282nd/Haley Road Intersection Safety Improvements
 - Bluff Road/327th Ave. Intersection Enhancements
- Paving:
 - 312th Dr
 - Church Road

www.clackamas.us/transportation/crf



Duus Road / Eagle Creek Road Intersection Improvements

www.clackamas.us/engineering/duus-eagle-creek

Mike Ward, *Project Manager*, 503-742-4688 mward@clackamas.us

