

# CLACKAMAS COUNTY BOARD OF COUNTY COMMISSIONERS

## Policy Session Worksheet

**Presentation Date:** 2/6/2018    **Approx. Start Time:** 1:30pm    **Approx. Length:** 60 mins

**Presentation Title:** Overview of Clackamas County Emergency Medical Services

**Department:** H3S / Public Health Division

**Presenters:** Richard Swift, Dr. Ritu Sahni

**Other Invitees:**

### WHAT ACTION ARE YOU REQUESTING FROM THE BOARD?

This session is for informational and discussion purposes only. The H3S Director and County EMS Medical Director will share background information on the County's system for providing Emergency Medical Services (EMS) and current activities will be highlighted.

### EXECUTIVE SUMMARY:

EMS is a broad term that encompasses both fire and ambulance paramedics, emergency medical technicians, and the doctors and nurses who provide technical and clinical assistance throughout the system of care. This presentation will seek to inform broadly on the nature of EMS, its role at the crossroads of medical care, and the ongoing progression from the provision of pre-hospital care to out-of-hospital care and treatment. The EMS Medical Director will also outline the specific aspects of EMS within Clackamas County and the features that make this system unique. This one hour session will provide an overview of the EMS system.

### FINANCIAL IMPLICATIONS (current year and ongoing):

Is this item in your current budget?     YES     NO

What is the cost? \$ 0.00

What is the funding source? N/A

### STRATEGIC PLAN ALIGNMENT:

- How does this item align with your Department's Strategic Business Plan goals?
  - By 2020, 80% of psychological emergency transports will be done by ambulance to the appropriate facility
- How does this item align with the County's Performance Clackamas goals
  - Ensure safe, healthy & secure communities

LEGAL/POLICY REQUIREMENTS: N/A

PUBLIC/GOVERNMENTAL PARTICIPATION: N/A

OPTIONS: N/A

**RECOMMENDATION:**

While there are no specific recommendations for this session, the EMS Medical Director hopes that it will inform future policy deliberations regarding adjustments to the provision of medical care within Clackamas County.

**ATTACHMENTS:**

Microsoft PowerPoint slides for 'Overview of Clackamas County Emergency Medical Services' - EMS Presentation.ppt

**SUBMITTED BY:**

Division Director/Head Approval \_\_\_\_\_

Department Director/Head Approval \_\_\_\_\_

County Administrator Approval \_\_\_\_\_

For information on this issue or copies of attachments, please contact: Jack Nuttall @ 503-742-5333
---

# Overview of Clackamas County Emergency Medical Services (EMS)

H3S / Clackamas County Public Health Division  
February 6<sup>th</sup>, 2018



**Public Health**  
Prevent. Promote. Protect.

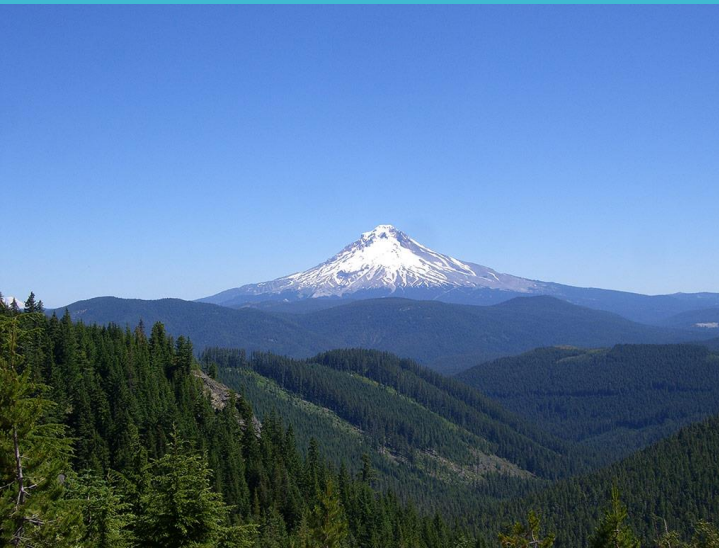
# Role of EMS in Clackamas County

- EMS represents an expansion of advanced medical care outwards into the community
- Paramedics and EMTs are not ambulance drivers, and their role is not simply to transport patients to hospitals
- EMS is the 'gateway to healthcare' for many people



# Ambulance Service Areas

- State law tasks Clackamas County with responsibility to provide EMS coverage to residents.
- The Ambulance Service Plan establishes this coverage with 3 Ambulance Service Areas:
  - Clackamas ASA
  - Canby ASA
  - Molalla ASA



# Ambulance Service Area Plan

- First Clackamas County ASA established in 1991, current version from 2012
- The plan is intended to ensure the highest quality & timely response.
- Establishes requirements for EMS and 911 services operating in the County, and penalties for non-compliance
- Sets educational, training & quality improvement standards

CLACKAMAS COUNTY CODE

TITLE 10

FRANCHISES

CHAPTER 10.01 Table of Contents

10.01 AMBULANCE SERVICE PLAN.....	1
10.01.010 Certification by Board of County Commissioners.....	1
10.01.020 Overview of County.....	1
10.01.030 Definitions.....	2
10.01.040 Boundaries.....	5
10.01.050 System Elements.....	9
10.01.060 Coordination.....	19
10.01.070 Provider Selection.....	23
10.01.080 County Ordinances and Rules.....	26

CHAPTER 10.01

10.01 AMBULANCE SERVICE PLAN

10.01.010 Certification by Board of County Commissioners

Clackamas County Code Chapter 10.01 is the Ambulance Service Plan for the County. The Board of County Commissioners hereby certifies that:

A. The County has included in this plan each of the subjects or items set forth in Oregon Administrative Rule 333-260-0020 and has addressed and considered each of those subjects or items in the adoption process.

B. In the Board's judgment, the ambulance service areas established in the plan will provide for the efficient and effective provision of ambulance services; and

C. To the extent they are applicable, Clackamas County has complied with ORS 682.062 and 682.063 and with existing local ordinances and rules.

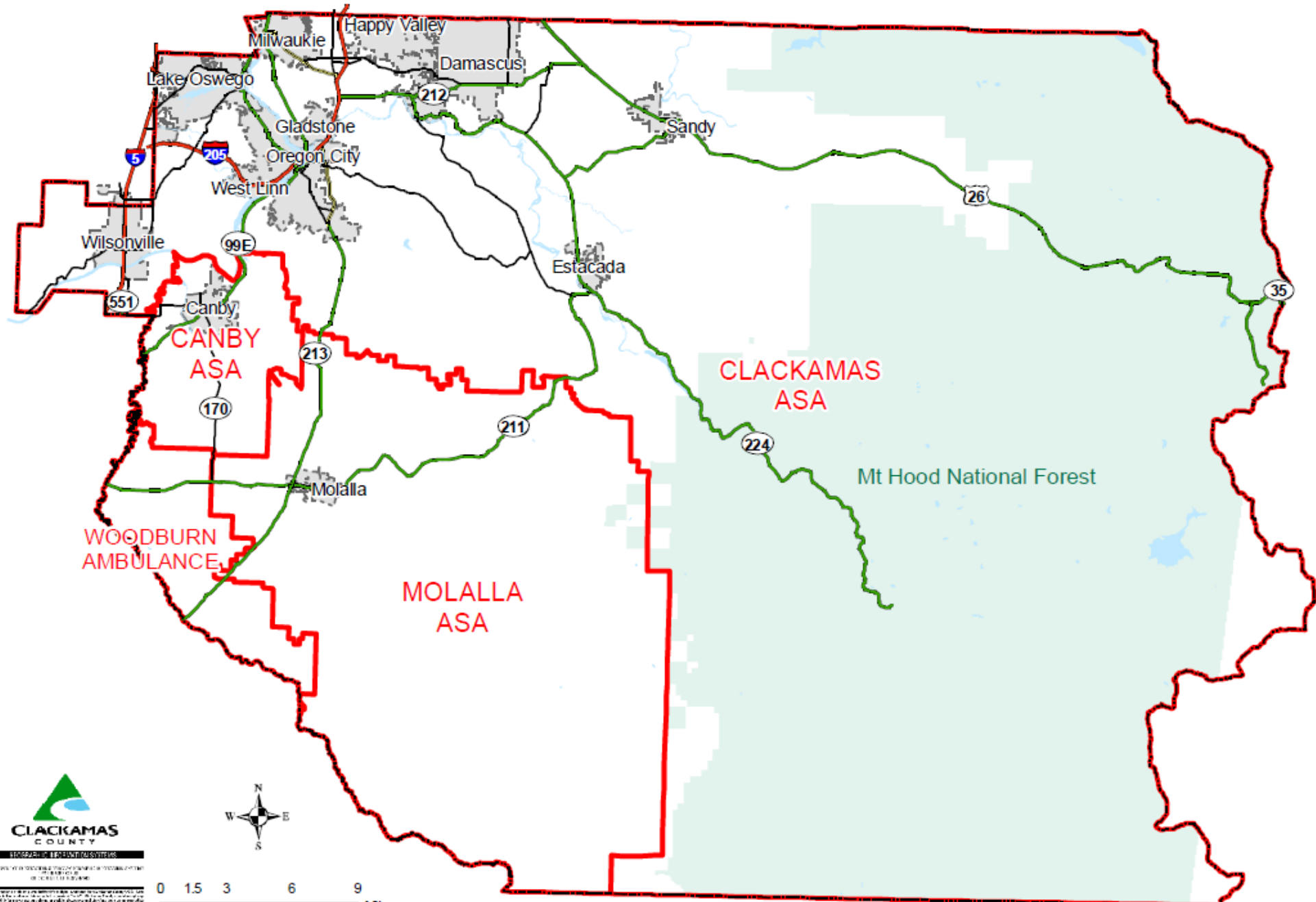
[Codified by Ord. 05-2000, 7/13/00]

10.01.020 Overview of County

A. Clackamas County has a population of approximately 378,480 as of April 1, 2010, and an area of 1,879 square miles. Provision of emergency medical services presents a challenge due to the widely varying demographic and geographic areas within the County. The urbanized areas of the County within the Portland metropolitan urban growth boundary are densely populated, while rural areas are much less densely populated. More than one-third of the County

Exhibit A - Page 1

# CLACKAMAS COUNTY AMBULANCE SERVICE AREAS



# Dual Advanced Life Support (ALS) Response Model

- A dual ALS system provides emergency care to residents utilizing both AMR and Fire medics on the majority of calls.
- It provides broad out-of-hospital medical care AND broad firefighting coverage.
- Treatment and transport provided through the combined effects of AMR and Fire assets.
- Provides enough crew members to manage complex emergencies, eg full code requires many people.





# Dual Advanced Life Support (ALS) Continued

- This system allows the utilization and ongoing training of a talented resource and fosters ongoing collaboration between Fire and Ambulance services.
- Combined efficiencies of services working together improves clinical outcomes, saves money, enhances coverage, and maximizes efforts in response to a disaster.

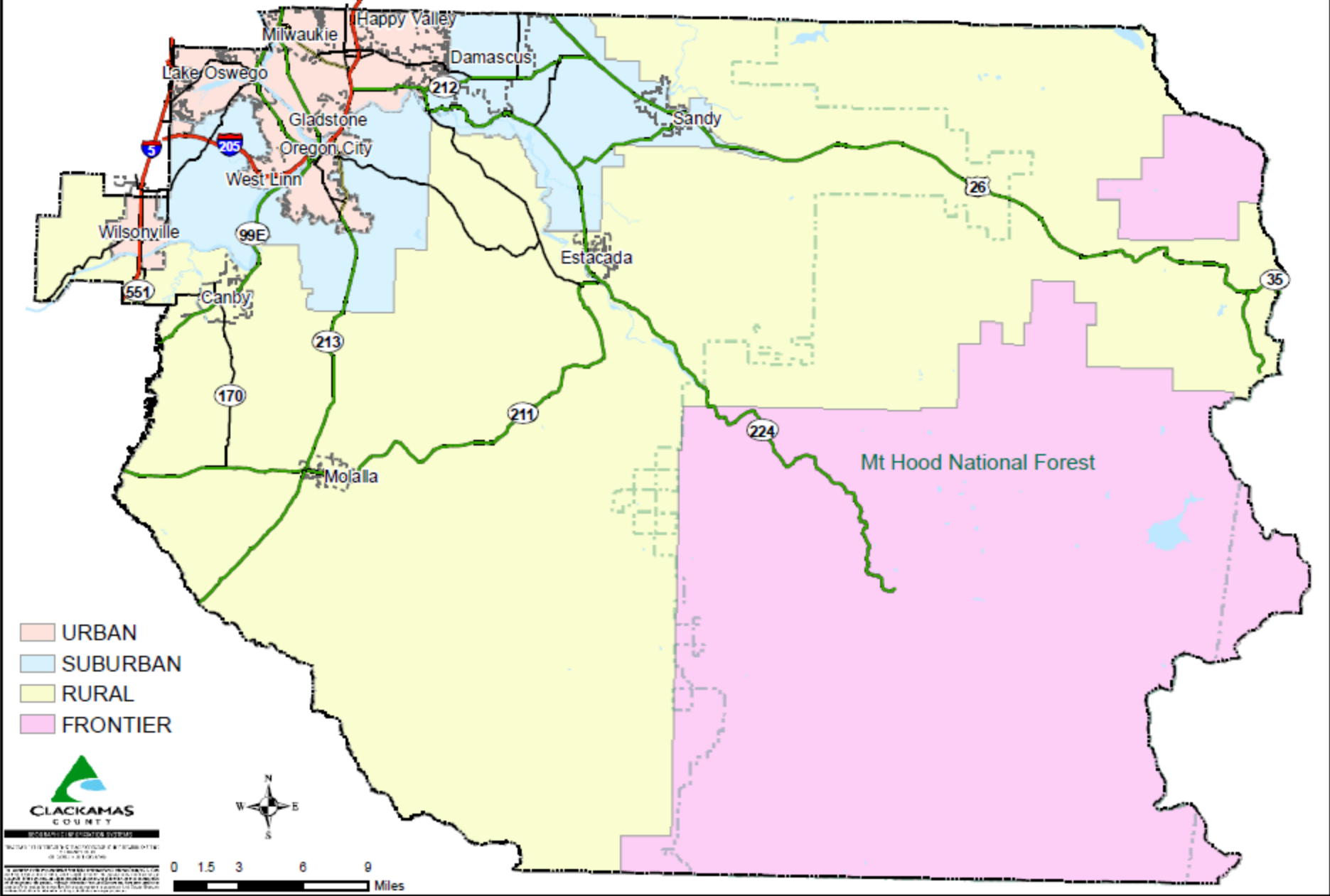


# Medical Director

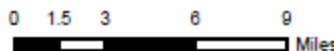


- State law requires each agency providing EMS care in Oregon to have licensed medical oversight through a Medical Director.
- Each agency's Medical Director is a licensed Emergency medical physician in Oregon.
- Dr Sahni is the overall EMS Medical Director for Clackamas County and provides medical oversight to the county contractor (AMR) in this role.

# CLACKAMAS COUNTY RESPONSE TIME ZONES



- URBAN
- SUBURBAN
- RURAL
- FRONTIER



# Response Zones & Requirements



The Ambulance Service Plan 2012 sets out the following response zones, with minimum transit times for EMS in 90% of calls (with Fire supporting AMR to achieve this) -

Urban	8mins
Suburban	12mins
Rural	25mins
Frontier	120mins



# Ambulance Service Contract



- Current version adopted in May 1, 2014
- Provides exclusive EMS service provision to American Medical Response in Clackamas County
- Contract expires on May 1st, 2019
- Contract may be extended up to five years in three year increments at the recommendation of the staff and approval of the board

# Ambulance Service Contract Cont.



- AMR maintains substantial compliance with the contract, which includes arrival time provisions as outlined in the ASA Plan – as well as other stipulations related to quality of care.
- Mechanisms are in place for addressing services failures if they occur.

# Role of Clackamas County EMS Council



- Serves as representative body of key stakeholders to make recommendations to the BCC and H3S department on matters related to EMS
- Oversees subcommittees that each review quality improvement, operations, training, and the EMS system enhancement fund.

# Clackamas County EMS Council Composition



NAME	POSITION
Craig Warden, M.D., CHAIR	EMS Agency Medical Director
Bill Conway, VICE CHAIR	City
Ritu Sahni, M.D	EMS Medical Director
Sarah Eckman	County
Steven DeHart	ALS Provider
Phil Moyer	Consumer
Richard Newton	BLS Provider
Jason Mahle	Commercial Transport
Vince Stafford	Fire Defense Board
Sean Stone, M.D.	ED Physician
Mark Spross	PSAP
Matt Dale	Government Transport



# Clackamas County EMS Subcommittees



## Clackamas County EMS Council



County-wide  
System QI  
Committee

Multi-Agency  
Training Group

System  
Enhancement  
Subcommittee

Operations  
Subcommittee

# Current EMS Council Priorities (opioids)

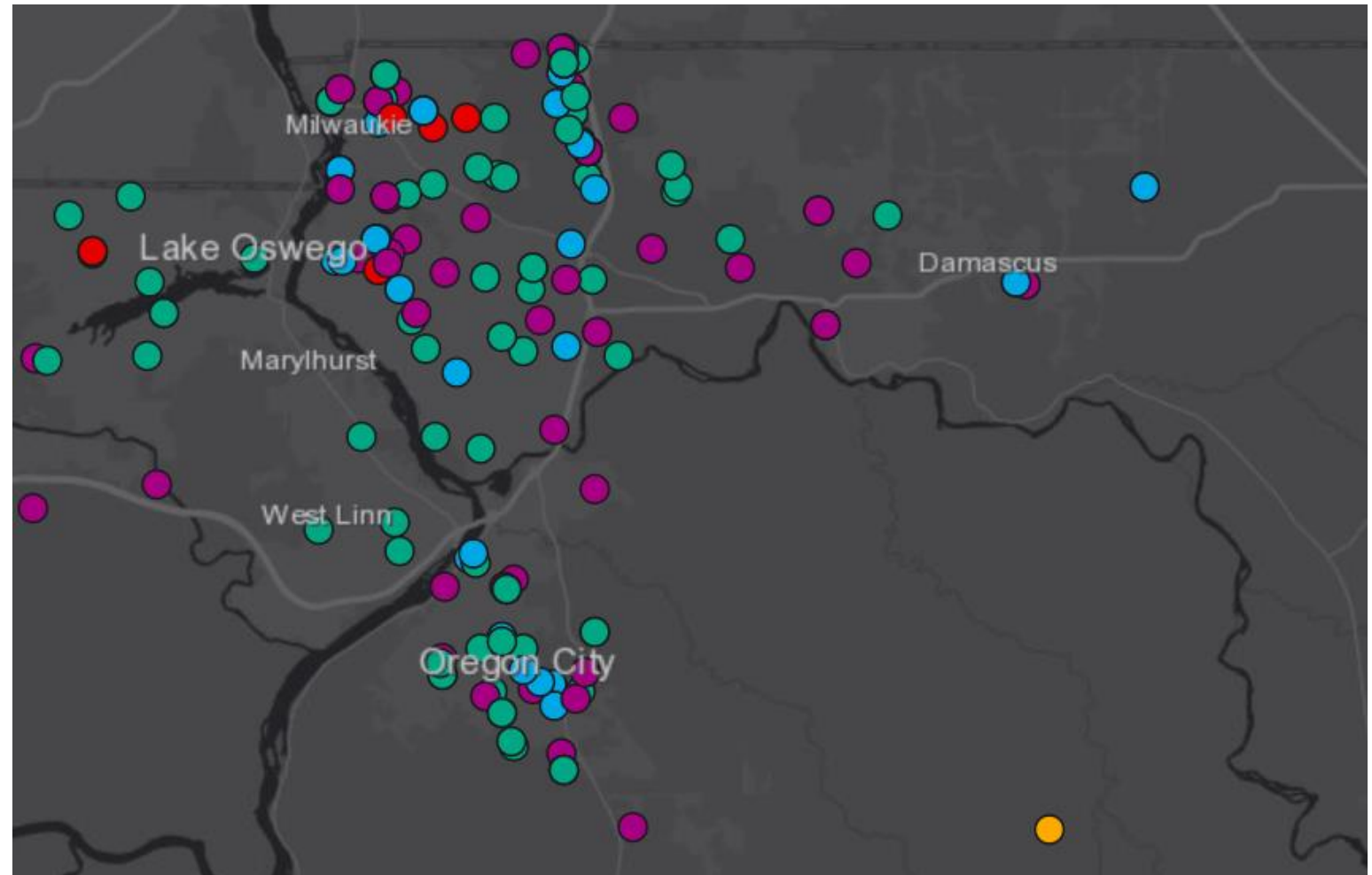


- Clackamas County is leading Oregon in efforts to prevent deaths from opioid overdose.
- Real-time data mapping of overdoses and other public health concerns, from EMS and Law Enforcement agencies (see next slide).
- Law Enforcement agencies (LEAs) carrying Narcan.
- Launch of Community paramedic opioid initiative to attempt intervention in patients who have recently survived an overdose.
- Interventions for high utilizers, physiological crisis response, and opening of behavioral health centers.

# Public Health Mapping

- Fatal: Multiple Doses Naloxone
- Fatal: No Naloxone
- Fatal: Single Dose Naloxone
- Non-Fatal: Multiple Doses Naloxone
- Non-Fatal: No Naloxone
- Non-Fatal: Single Dose Naloxone
- Unknown

- Real time mapping of health events in Clackamas County now used by Public Health. ( Eg. 2017 ODs)

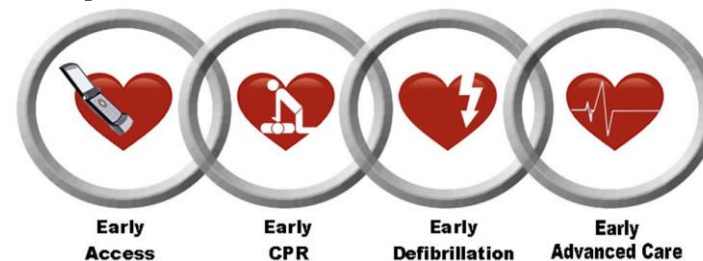


# Current EMS Council Priorities



## Clinical & Community Priorities

- Through data driven QI processes and education, the survival rate from sudden cardiac arrest has increased substantially in Clackamas County.
- Launch of Pulse Point across County to provide community CPR response.
- Widely attended public CPR training.
- Stop the bleed training.
- Whole of community approach increased disaster preparedness.



# Current EMS Council Priorities



## Quality Improvement Initiatives

- Highly data driven - brings in representatives from EMS and hospitals to discuss confidential medical cases and find ways to improve outcomes.
- Focuses upon cardiac arrest, 'heart attack' (STEMI), stroke, trauma, and airways cases such as asthma.



# Current EMS Council Priorities



- Harnessing power of incoming EMS data into one software system.
- Integrated software that automatically collates data from all EMS agencies and systems to enhance clinical outcomes and education.
- Enables instantaneous tracking of trends, from opioids, to flu and other infectious diseases.

# The future...



- EMS has great potential to be part of the solution to reducing overall healthcare costs.
- Make Clackamas County the safest place to have an emergency in the State of Oregon!
- Enhance community preparedness and the culture of survival.

THANK YOU

