

Trucking and Distribution

Expanding global and domestic trade and “just in time” shipping logistics require an efficient and reliable freight transportation network. Global and domestic goods movement is an important part of the regional economy. Trucking and warehousing has long been served by Clackamas County’s excellent rail and interstate highway connections. Trucking distribution and warehousing activities closely follow wholesale trade patterns, which are an important component of the broader regional and national economy. Some of Clackamas County’s largest employers, including Fred Meyer Distribution Center, Gordon Trucking and Rite Aid, are found in this cluster.

Economic Benefits to Clackamas County and the Region

The trucking and distribution cluster is prominent in Clackamas County with access to several major metropolitan markets within Oregon, Washington, Idaho, and northern California within a one-day drive. Today there are 178 trucking and distribution companies that employ nearly 4,300 workers in Clackamas County. This cluster also includes four of the county’s largest employers, and supports hundreds of small and medium size suppliers.

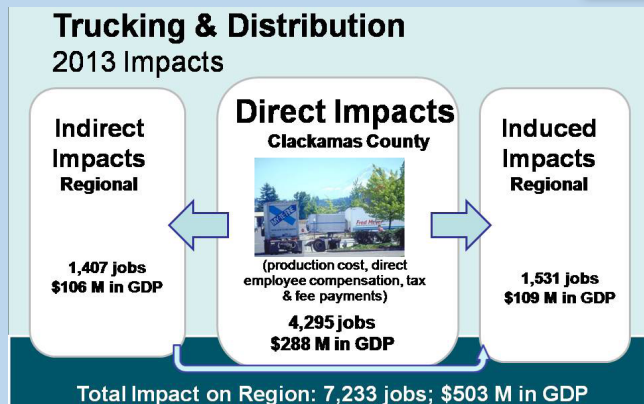
This cluster has a strong tendency to favor Clackamas County over other regional and west coast locations, and favors Clackamas industrial locations with convenient highway, rail and airport access. This cluster provides a large mix of entry level and management career opportunities, and is expected to grow faster than average over the coming decade. The direct economic benefit from production costs, employee compensation, and tax payments accounts for \$288 million in value added GDP in Clackamas County, and leverages an additional \$215 million in secondary regional GDP from supply chain purchases and employee spending multipliers.



Trucking and Distribution Cluster Current Stats for Clackamas County

- Gross Domestic Product (GDP): \$288 M
- Cluster Share of County GDP: 1.6%
- Exports/Sales from Outside Region: 44%
- Direct Employment: 4,295
- County Businesses: 178
- Number of Businesses in the Top 100: 4
- 10-year Job Growth Forecast: 12%
- Cluster Location Quotient (LQ): 1.7

Source: compiled by FCS GROUP based on IMPLAN (2013), adjusted to 2015 dollars. 10-year forecast provided by the Oregon Employment Department. GDP = gross domestic product. Location Quotient (LQ) depicts relative share of this industry’s contribution in Clackamas County compared to this industry’s contribution in the 9-county Metropolitan Statistical Area.



CLACKAMAS COUNTY ECONOMIC LANDSCAPE
Trucking and Distribution

Trucking and Distribution: Annual Economic Benefits

	2006	2009	2010
Industry Location Quotient	2.07	1.86	1.7
Contribution to County GDP	3.0%	1.8%	1.6%
Business Establishments in County	225	166	178
Average Labor Income (per job)	\$57,816	\$51,279	\$40,436
Labor Income in County	\$288,900,000	\$199,730,000	\$173,670,000
Employment			
Direct Jobs in Clackamas County	4,997	3,895	4,295
Secondary Jobs	4,309	2,841	2,938
Total Employment	9,306	6,736	7,233
Direct GDP and Output in Clackamas County			
Direct GDP (Value Added)	\$396,950,000	\$287,940,000	\$288,060,000
% Traded Outside Region	n/a	35%	44%
Output	\$717,210,000	\$492,150,000	\$608,240,000

GDP = Gross Domestic Product.

Source: Analysis by FCS GROUP. All data in this table with the exception of business establishments, are based on 2006, 2010, 2013 IMPLAN estimates. Employment reflects total jobs (full and part time workers as well as the self-employed). Estimated business establishments are derived from the Oregon Employment Department. Location quotients are based on Clackamas County's relative propensity to attract employers within this cluster in comparison to the nine-county Portland-Vancouver Metropolitan Statistical Area (MSA). *Note: Dollar figures are adjusted to 2015 dollars.*

Trucking and Distribution Strategic Market Opportunities

- Given the presence of several goods-producing industries in Clackamas County, the trucking and distribution cluster is of vital importance to businesses that must efficiently move their products to wholesalers nationally and globally.
- The proximity to I-5, I-205 and the Port of Portland makes Clackamas County an excellent location for trucking and distribution businesses that serve Oregon and the greater Northwestern United States.
- There is a trend in warehousing consolidation with newer regional facilities being constructed with 1.0 to 1.5 million square feet per building on 100 to 500 acres, particularly in locations with intermodal air/rail/port/highway access. The lack of large industrial sites in Clackamas County will make it very difficult to accommodate these types of large super-regional warehousing operations.
- Smaller companies with limited production can benefit from a shared warehousing and shipping services located in Clackamas County for exporting products beyond the Portland region. As demand for organic and specialized food products grows, warehousing to serve a growing West Coast market will create opportunities to build on Clackamas County's strong leadership in locally organic agriculture, warehousing and distribution.
- Smaller companies with limited production can benefit from a shared warehouse and shipping service to export products beyond the Portland region.

Trucking and Distribution Cluster North American Industrial Classification System (NAICS) Categories

484: Truck Transportation

Businesses within this sector provide over-the-road transportation using trucks and tractor trailers. This includes general freight distribution.

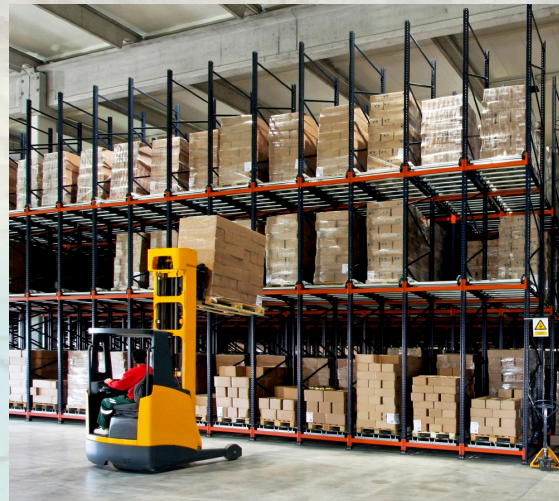
111422: Warehousing and Storage

This sector includes businesses that operate warehousing and storage facilities for general merchandise, refrigerated goods and other warehouse products. These establishments take responsibility for storing goods and keeping them secure. They also may provide incidental services involving shipping logistics, such as labeling, breaking bulk containers, inventory control, light assembly, order entry, packaging, price marking, ticketing and transportation arrangement.

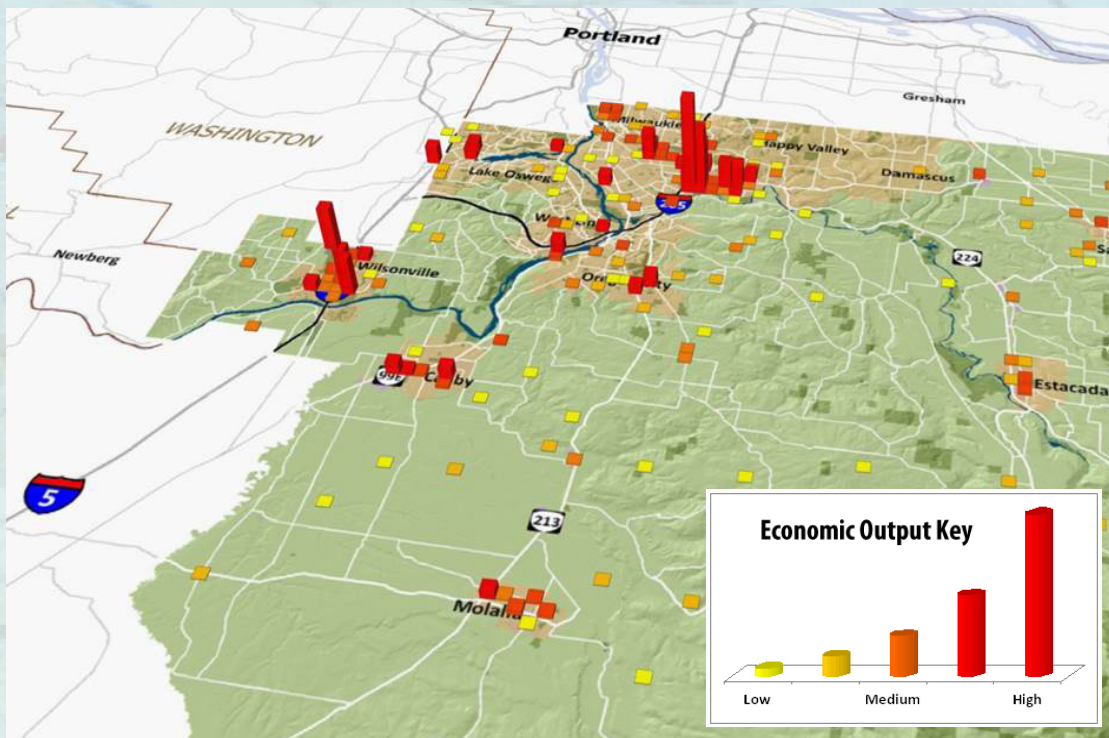
Sample of Trucking and Distribution Companies in Clackamas County

Con-Way Freight
Distribution Inc.
Gordon Trucking Inc. *
Graebel Oregon Movers Inc.
Interstate Distributor Co. *
J & D Refrigerated Services
Kool Pak LLC
Rite Aid (Distribution Center)*
Ruan Transport Corporation
Fred Meyer Distribution Center*

Source: Oregon Employment Department; FCS GROUP
 * Indicates top 100 County Business Listing



Existing Trucking and Distribution Businesses in Clackamas County: Annual Regional Economic Output by Location*



* Reflects total economic output attributed to business activities measured in 2013 using the IMPLAN model for Clackamas County.

CLACKAMAS COUNTY ECONOMIC LANDSCAPE Trucking and Distribution

Career Opportunities

The trucking and distribution cluster provides a wide variety of technical and professional occupations ranging from entry level to advanced management positions, including:

- Professional driver (requires Class B COL license)
- Shipping and logistics support
- Truck and equipment leasing
- Insurance and claims
- Accounting and bookkeeping
- Laborers and stock workers
- General managers and operating managers
- Inventory management
- Fork lift operators
- Inspectors
- Mechanics



Resources

Clackamas County Business & Economic Development
www.clackamas.us/business

Business Oregon
www.oregon4biz.com

Clackamas Workforce Partnership
www.clackamasworkforce.org

IITR Truck Driving School
www.iitr.net

Clackamas Community College
www.clackamas.edu

Oregon Trucking Association
www.ortrucking.org

Contact Information

Clackamas County Business & Economic Development
150 Beaver Creek Road
Oregon City, Oregon 97045
503-742-4329
4biz@clackamas.us
www.clackamas.us/business

