

CLACKAMAS COUNTY BOARD OF COUNTY COMMISSIONERS

Policy Session Worksheet

Presentation Date: April 25, 2017 **Apprx Start Time:** 10:30 PM **Apprx Length:** 1 hr

Presentation Title: French Prairie Bridge Project Overview

Department: Department of Transportation and Development, City of Wilsonville

Presenters: Karen Buehrig, Transportation Planning Supervisor; Zach Weigel, Civil Engineer for the City of Wilsonville and Rick Gruen, County Parks Manager

Other Invitees: Barb Cartmill, Director of DTD; Mike Bezner, Assistant Director of Transportation DTD

WHAT ACTION ARE YOU REQUESTING FROM THE BOARD? None. This is an informational item only.

EXECUTIVE SUMMARY:

The French Prairie Bridge is a proposed bicycle/pedestrian/emergency-access crossing of the Willamette River west of the Interstate 5 Boone Bridge in Wilsonville. The City of Wilsonville is leading a project to plan and develop preliminary designs for this proposed new bridge. The intent of the project is to address the following questions:

- Where are the preferred landing points for the bridge?
- What is the preferred bridge type?
- What is the estimated cost of the preferred bridge and how might its construction be funded?

The attached Project Information Sheet provides information on the background and schedule of the project.

This project is a specific interest to Clackamas County because while one side of the bridge will be located in Wilsonville, the southern terminus of the bridge will be in unincorporated Clackamas County. In addition, the alignment corridors under consideration traverse over property owned by the Clackamas County Parks Department and is used as the Boones Ferry Marina.

The purpose of this policy session is to allow the BCC to become familiar with the project, understand the timelines and decision making process and be introduced items specifically related to the Boones Ferry Marina.

FINANCIAL IMPLICATIONS (current year and ongoing):

Is this item in your current budget? X YES NO

The staff time required to coordinate with Wilsonville on this project is currently within the budget, but funding to construct the bridge has not been identified.

What is the cost? \$ Unknown What is the funding source? Not yet identified

The cost of the current project to identify bridge location and type is being funded by the City of Wilsonville and funding from the Metropolitan Transportation Improvement Program (MTIP)

STRATEGIC PLAN ALIGNMENT:

- How does this item align with your Department's Strategic Business Plan goals?

The French Prairie Bridge project supports the goal of providing "repair, construction, preservation and emergency response services to the traveling public so they can live, work, conduct business, recreate and travel safely on well-maintained County transportation system"

- How does this item align with the County's Performance Clackamas goals?

The French Prairie Bridge project aligns with the following Performance Clackamas Strategic Priorities

- **Build a strong infrastructure**
- **Ensure safe, healthy and secure communities**

LEGAL/POLICY REQUIREMENTS:

This is an informational session. During the course of the French Prairie Bridge project to identify location and bridge type, the various legal and policy requirement of siting the bridge will be identified.

PUBLIC/GOVERNMENTAL PARTICIPATION:

Staff from the County's Department of Transportation and Development, as well as Business and Community Services participate in the technical review of the information produced from this project. There are a variety of public engagement opportunities scheduled throughout the project. An online open house was held in February and March of 2017.

OPTIONS:

The policy session is informational only.

RECOMMENDATION:

None, this is an informational item only.

ATTACHMENTS:

Attachment 1: January 2017 French Prairie Bridge Project Information Sheet

SUBMITTED BY:

Division Director/Head Approval _____

Department Director/Head Approval _____

County Administrator Approval _____

For information on this issue or copies of attachments, please contact Karen Buehrig @
503-742-4683



FRENCH PRAIRIE BRIDGE PROJECT

JANUARY 2017 • UPDATE NO. 1
WWW.FRENCHPRAIRIEBRIDGEPROJECT.ORG

Project to address key questions about proposed bridge

The City of Wilsonville is beginning a planning and design project for the proposed French Prairie Bridge—a bicycle/pedestrian/emergency responder crossing over the Willamette River. The project aims to address the following questions:

- Where are the preferred landing points for the bridge?
- What is the preferred bridge type?
- What is the estimated cost of the preferred bridge and how might its construction be funded?

The project will result in preliminary engineering plans for the bridge and is expected to conclude in late 2018. At project completion, the City and

its regional partners will have the information needed to decide whether to pursue final bridge design and construction.

Crossing the Willamette

Currently, the only bridge over the Willamette River in the 30-mile stretch between Newberg and Oregon City is the heavily trafficked Interstate 5 (I-5) Boone Bridge.

Pedestrians and cyclists wanting to cross the river in the Wilsonville area must use the I-5 road shoulder next to cars and trucks traveling at high speeds. With narrow shoulders that offer no separation from traffic, walking or biking on the Boone Bridge is an unpleasant and potentially dangerous experience.

The French Prairie Bridge is proposed to provide cyclists and pedestrians with safe access across the Willamette River. The

bridge would serve local residents and fill a missing link in a cycling route connecting the Portland metro area with the French Prairie region of the Willamette Valley and communities as far south as Eugene.

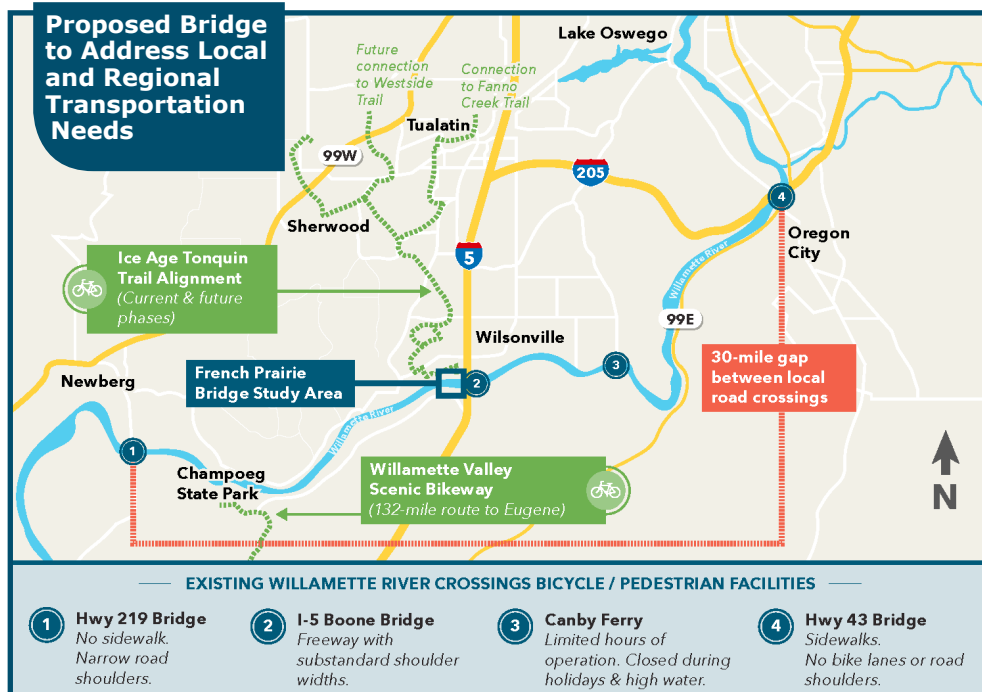
The new bridge is also proposed to address emergency response needs. When I-5 traffic is blocked on the Boone Bridge, first responders could use the French Prairie Bridge for emergency access to incidents on the freeway and to populations south of the river.

Two decades in the making

The French Prairie Bridge Project is the continuation of Wilsonville community planning efforts that first identified the need for a safe bicycle and pedestrian crossing over the Willamette River more than 20 years ago. The concept of a separate bike/ped bridge was most recently adopted in the City's Transportation Systems Plan and Tourism Development Strategy.

Metro awarded the City a \$1.25 million federal grant to conduct the current bridge planning and preliminary design project. To define the project study area, the City conducted a feasibility study of potential bridge locations in 2015.

The 2015 feasibility study identified significant challenges with potential sites east of I-5, near Charbonneau, including topography and property impacts. Based on this study, the Wilsonville City Council decided the French Prairie Bridge Project would focus on potential bridge sites west of I-5, between the I-5 Boone Bridge and the Portland and Western Railroad Bridge.



What's ahead

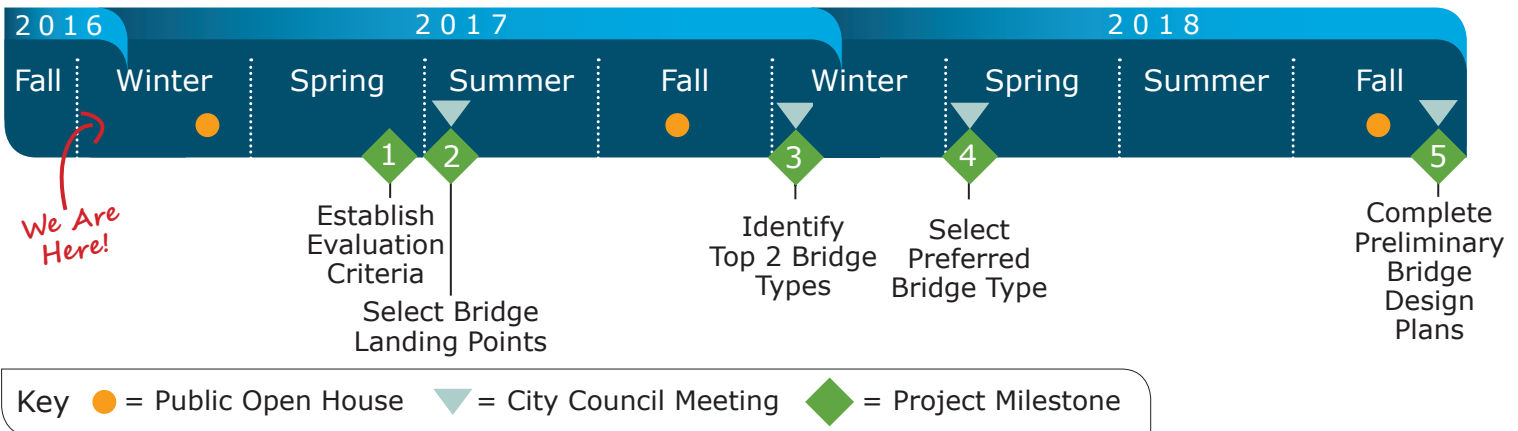
The City has selected OBEC Consulting Engineers to lead the French Prairie Bridge Project. The consultant team will conduct environmental, transportation, and engineering studies to inform decisions about the bridge. This includes work to identify and minimize the bridge's potential impacts to the river and other sensitive natural resources.

Public input will be important to help identify the preferred bridge landing points and the preferred bridge style. Open houses will be held to present and obtain feedback on bridge alternatives.

The project is scheduled to be completed by late 2018. The process of planning and developing preliminary designs for the bridge is organized around the following milestones:

- 1 Establish Evaluation Criteria:** Evaluation criteria will serve as a tool for comparing alternatives and making decisions about the proposed bridge.
- 2 Select Bridge Landing Points:** The City Council will choose where the bridge should land on each side of the river after an evaluation of potential alignments between I-5 and the Railroad Bridge.
- 3 Identify Top Two Bridge Types:** Bridge types representing a range of styles and costs will be considered based on the selected bridge landing points. Two bridge types will be selected for detailed study.
- 4 Select Preferred Bridge Type:** Photo realistic drawings and detailed analysis of the top two bridge types will be prepared to inform the City Council's selection of a preferred bridge type.
- 5 Complete Preliminary (30%) Design Plans:** The engineering team will develop the preliminary design for the bridge structure and its connection points on each side of the river.


Anticipated project schedule



A **Project Task Force** comprised of local residents, emergency responders, and other regional stakeholders is reviewing public input and providing recommendations to the Wilsonville City Council on key project decisions. The group is co-chaired by Clackamas County Chair Jim Bernard and Wilsonville City Councilor Charlotte Lehan, who serve as non-voting members of the Task Force.

A **Technical Advisory Committee** is providing advice to the Project Management Team and the Task Force on regulatory and technical aspects of bridge siting, design, and funding. Members include staff from the City of Wilsonville, Clackamas County, Metro, the Oregon Department of Transportation, and state and federal permitting agencies.

Visit the project website for a complete list of Project Task Force and Technical Advisory Committee members.



Get Involved!

Multiple public open houses will be held during the planning and design project. You can also visit the project website to stay informed and share your thoughts with the project team.

At www.FrenchPrairieBridgeProject.org:

- Sign up to receive project updates by email.
- Submit comments and questions.
- Review project reports, the meeting calendar, and frequently asked questions.

The logo features several curved, overlapping lines in shades of blue and light blue, resembling grass or reeds, framing the text.

**FRENCH
PRAIRIE
BRIDGE**
PROJECT IN
WILSONVILLE

BCC Policy Session

April 25, 2017



WELCOME

- Project History
- Project Outcomes
- Evaluation Criteria



PROJECT HISTORY

1847: Boones Ferry Operation

1954: I-5 Boone Bridge Opens

1993: Identify Crossing Need



PROJECT HISTORY

2006: Evaluate Willamette River Crossing Options

Alternatives	Connectivity	User Generator	Land Uses	Regional Benefits	Ease of Implementation	Total
Adding a bridge to the railroad crossing	25	20	10	10	2	67
Cantilevering a bridge from I-5	25	25	10	15	5	80
Bridge underneath I-5	25	15	15	10	5	70
New bicycle/pedestrian bridge	25	25	15	15	5	86
Bicycle/pedestrian ferry	20	20	15	15	10	80
Do nothing	10	0	10	0	10	30

2009: Awarded Federal Grant for Project Development

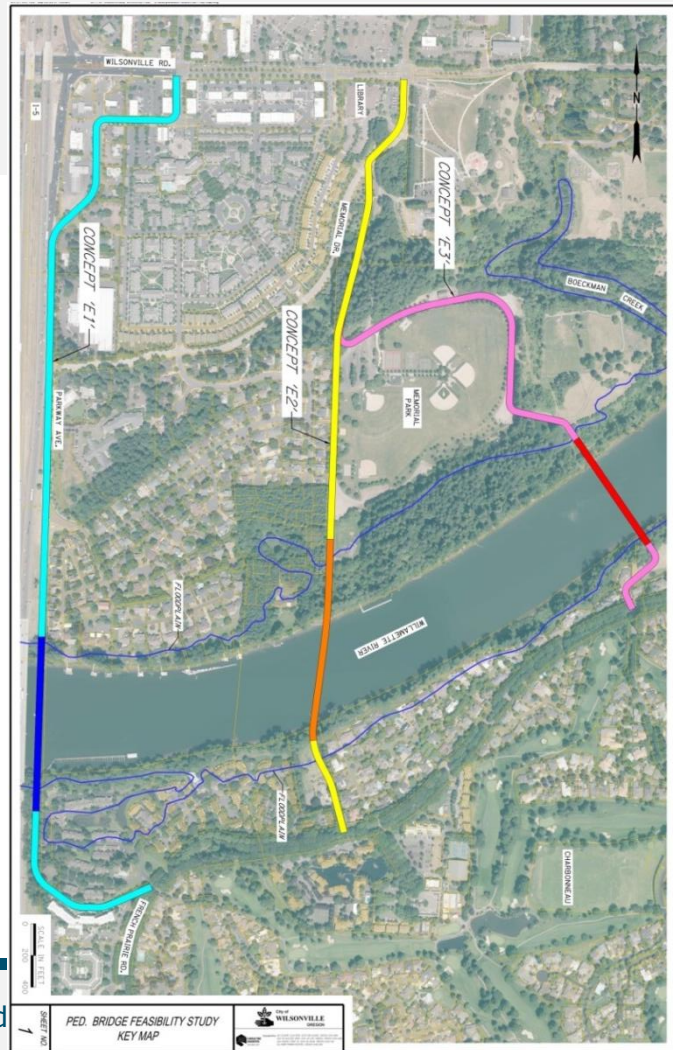
2013: Ice Age Tonquin Trail Plan

2014: Tourism Development Strategy

PROJECT HISTORY

2015

Evaluate Bridge
Study Locations
West of Boone Bridge



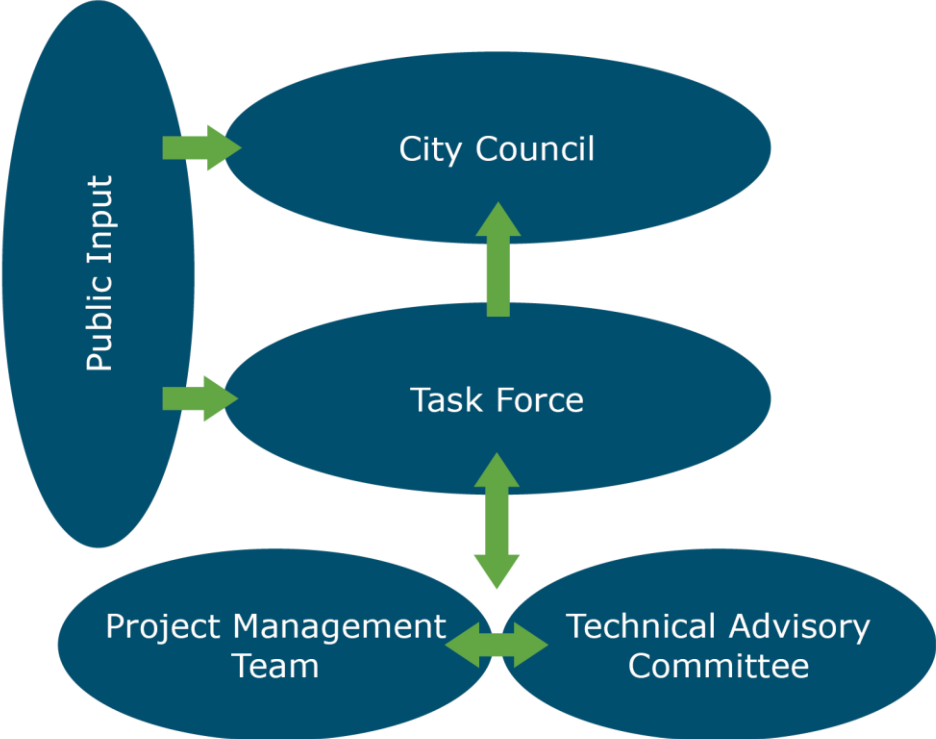
PROJECT OUTCOMES

Preliminary (30%) Design

- Preferred Bridge Location & Landings
- Preferred Bridge Type
- Impacts & Benefits
- Costs for Final Design & Construction

Inform Regional Partners on Decision to Proceed

PROJECT ROADMAP: Decision Making



PROJECT SITE

Project Study Area

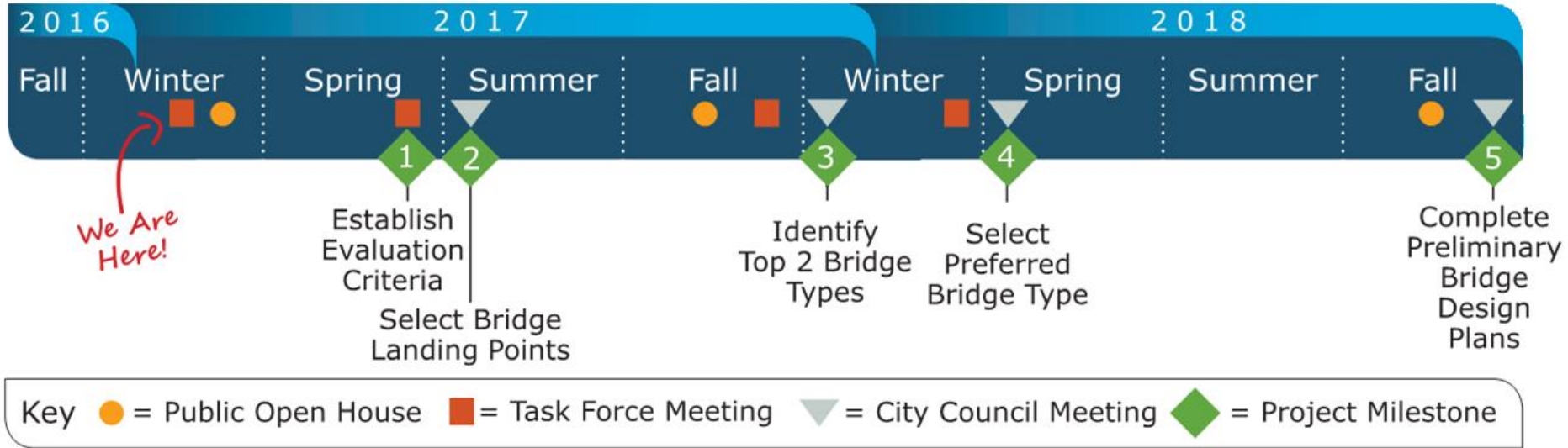


PROJECT SITE

Project Study Area



PROJECT ROADMAP: Schedule



ALIGNMENT ALTERNATIVES



Boones Ferry Marina - West



Boones Ferry Marina Parking



ALIGNMENT ALTERNATIVES



Boones Ferry Marina - East



Boones Ferry Marina Property - East



Issues Specific to Clackamas County

- Impact to marina
- Impact to property owners
- Impact on agricultural land

- What is important to you?

Next Steps

- Development of Evaluation Criteria that will be used to guide the selection of the location corridor
- Questions?