

CLACKAMAS COUNTY BOARD OF COUNTY COMMISSIONERS

Sitting/Acting as (if applicable)

Policy Session Worksheet

Presentation Date: December 6, 2023 **Approx. Start Time:** 10:30 am **Approx. Length:** 30 minutes

Presentation Title: Emergency Declaration Overview

Department: County Administration/Office of Disaster Management

Presenters: Daniel Nibouar

Other Invitees: Hong Huynh

WHAT ACTION ARE YOU REQUESTING FROM THE BOARD?

This will be an informational presentation to provide an overview of the process and considerations for the Board of County Commissioners (BCC) to declare an emergency. Following the presentation, we are requesting the BCC work through simulated incidents to practice the application of the process.

EXECUTIVE SUMMARY:

As elected officials, the BCC have a variety of emergency responsibilities before, during, and after an Emergency. Today's presentation will focus on the specific responsibility of declaring an Emergency within the County. This is a critical function during any emergency where extraordinary measures or outside assistance is required. While a declaration is not required for many emergency responses, it is important that the BCC is informed on the associated considerations and processes.

The decision to declare an emergency is a crucial one, as it authorizes or triggers a variety of actions. A declaration establishes a state of emergency, granting the BCC the authority to override normal procedures and allocate resources to immediate emergency response. It also can initiate a formal request for assistance from state and federal agencies, mobilizing additional resources and critical supplies.

While emergency declarations empower the BCC and the County to implement critical measures, they also carry certain limitations. Declarations do not guarantee state or federal assistance, and reimbursement for emergency expenses depends on specific criteria. Additionally, emergency declarations are restricted to unincorporated areas of the county and incorporated areas that have requested county assistance.

Two scenarios will be presented that could initiate a declaration process. The BCC will work through the scenario to determine if a declaration is required and what measures should be included. County staff representing county administration, including disaster management, and county counsel will be simulating their roles to provide recommendations.

FINANCIAL IMPLICATIONS (current year and ongoing):

Is this item in your current budget? YES NO

What is the cost? \$ 0

What is the funding source? N/A

STRATEGIC PLAN ALIGNMENT:

- How does this item align with your Department's Strategic Business Plan goals?
 - Disaster Management: Provides disaster planning and preparedness as well as response, recovery, and mitigation services to the Clackamas County community. This includes

coordination between local, regional and state partners, and County decision-makers so they are prepared to enact emergency response plans and policies.

- How does this item align with the County's Performance Clackamas goals?
 - County: Ensure safe, healthy and secure communities.

LEGAL/POLICY REQUIREMENTS: None at this time. The intention of this presentation is to prepare the County to execute an Emergency Declaration when necessitated by an incident.

PUBLIC/GOVERNMENTAL PARTICIPATION: Disaster Management staff developed this presentation with the input and guidance of County Counsel.

OPTIONS: N/A

RECOMMENDATION: N/A

ATTACHMENTS:

- Attachment A: Emergency Declaration Presentation

SUBMITTED BY:

Division Director/Head Approval _____

Department Director/Head Approval Paul V. Miller

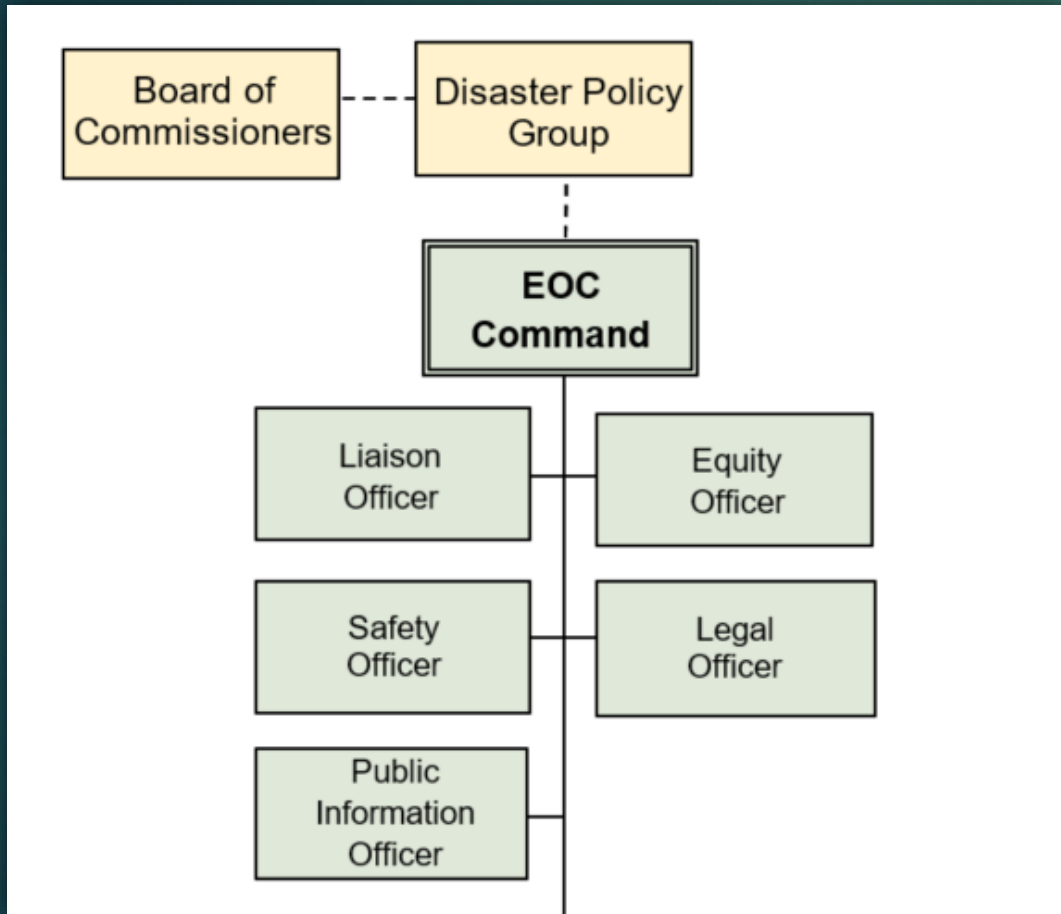
County Administrator Approval _____

For information on this issue or copies of attachments, please contact Lauren Underwood @ 971-409-3186

Emergency Responsibilities of Elected Officials

EMERGENCY DECLARATION OVERVIEW

How the BCC works with EOC Command during incidents



The Board of County Commissioners supports the Emergency Operations Center by providing policy level support during incidents.

The County Administrator and Command will serve as the BCC's point of contact dependent on the incident and policy needs.

Defining an Emergency

Any incident, natural or man-made, that has or could cause:

- ▶ Injury or loss of life
- ▶ Human suffering
- ▶ Environmental damage
- ▶ Property damage
- ▶ Financial loss

To an extent that extraordinary measures must be taken to protect the health, safety, and welfare of the public.

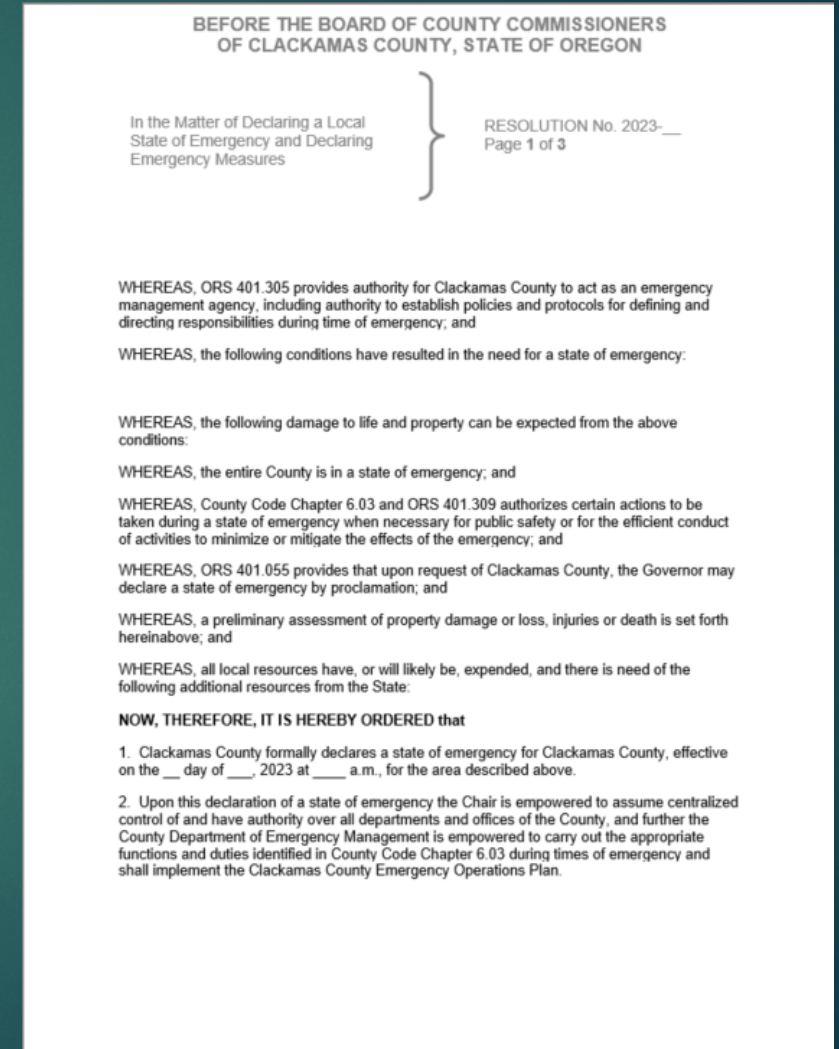


What Does an Emergency Declaration Do?

- ▶ Establishes a state of emergency in the County.
- ▶ Provides legal protection for certain emergency actions.
- ▶ Gives the BCC Chair authority over all departments, divisions and offices of the County in order to enact provisions of chapter 6.03.
- ▶ Provides the County Administrator/EOC Command the authority to use all available County resources as necessary to manage the incident.
- ▶ Emergency Measures listed in the Declaration are available for selective use by EOC Command as necessary to manage the incident.

What is included in an Emergency Declaration?

- ▶ Type of Emergency
- ▶ Current & Expected Impacts
 - ▶ Location(s) Impacted
 - ▶ Number of People Impacted
 - ▶ Initial Damage Estimate
- ▶ Emergency Measures to be Enacted
- ▶ Local Resources Committed
- ▶ Expected Resource & Assistance Needed
- ▶ Expected Duration of Emergency



Emergency Declaration Process

City Declarations

- ▶ Go through the County to submit to the State.

County Declarations

- ▶ Are drafted by County Counsel and EOC Command.
- ▶ Declaration is presented to the Board for approval.

Submission to the State

- ▶ Approved Declaration is sent to the State for review.
- ▶ Governor determines if State assistance will be provided.

Scenario: Cascadia Earthquake

7



Modified Mercalli Intensity (MMI)

III or less: Weak Shaking	V: Moderate Shaking	VII: Very Strong Shaking
IV: Light Shaking	VI: Strong Shaking	VIII or more: Severe Shaking

Friday, July 5, 2024

- ▶ Magnitude 9.0 earthquake along Cascadia fault line
- ▶ All of Clackamas experiences strong-very strong shaking
- ▶ Impacts are most significant in western populated area
 - ▶ Injuries & Deaths
 - ▶ Damaged & Destroyed Structures
 - ▶ Impassable Roads & Bridges
 - ▶ No Power or Communications

Questions?