

# OAK LODGE & GLADSTONE COMMUNITY PROJECT

GLADSTONE TASK FORCE PRESENTATION - GLADSTONE CHARACTER  
JUNE 10, 2020



**NORTH CLACKAMAS**  
PARKS & RECREATION DISTRICT



# ATTRIBUTES OF GLADSTONE COMMUNITY

## GLADSTONE LIBRARY

- Connection to Nature
- Small Town Feel
- Express Civic Character
- Celebrate Heritage
- Integration of Art
- Sustainable Design
- Look to the Future





# CONFLUENCE OF CLACKAMAS & WILLAMETTE RIVERS

GLADSTONE LIBRARY





**POW WOW TREE – SYMBOL OF GLADSTONE**  
GLADSTONE LIBRARY





**1899 CHAUTAUQUA FESTIVAL AUDITORIUM**  
GLADSTONE LIBRARY



# ADVENTIST CAMPGROUND & CONFERENCE CENTER IN GLADSTONE PARK

GLADSTONE LIBRARY





# MACHINISTS CREDIT UNION

## GLADSTONE LIBRARY





# CRAFTSMAN BUNGALOWS IN ARLINGTON CAMPGROUND

GLADSTONE LIBRARY





**PORTLAND AVENUE ANTIQUE CAR SHOW**  
GLADSTONE LIBRARY





# PORTLAND AVENUE TODAY

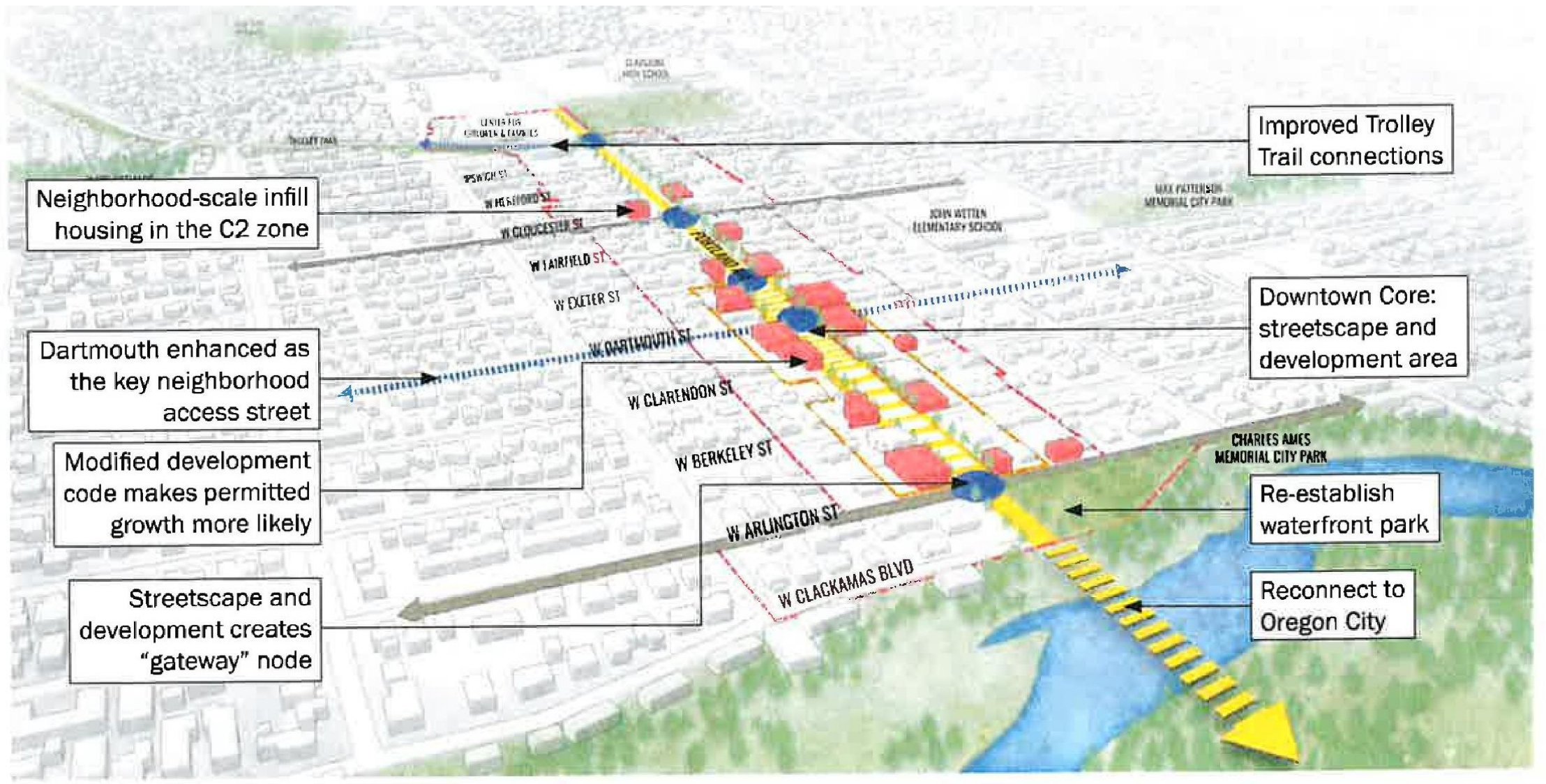
## GLADSTONE LIBRARY





# 2017 DOWNTOWN REVITALIZATION PLAN

## GLADSTONE LIBRARY





# 2017 DOWNTOWN REVITALIZATION PLAN

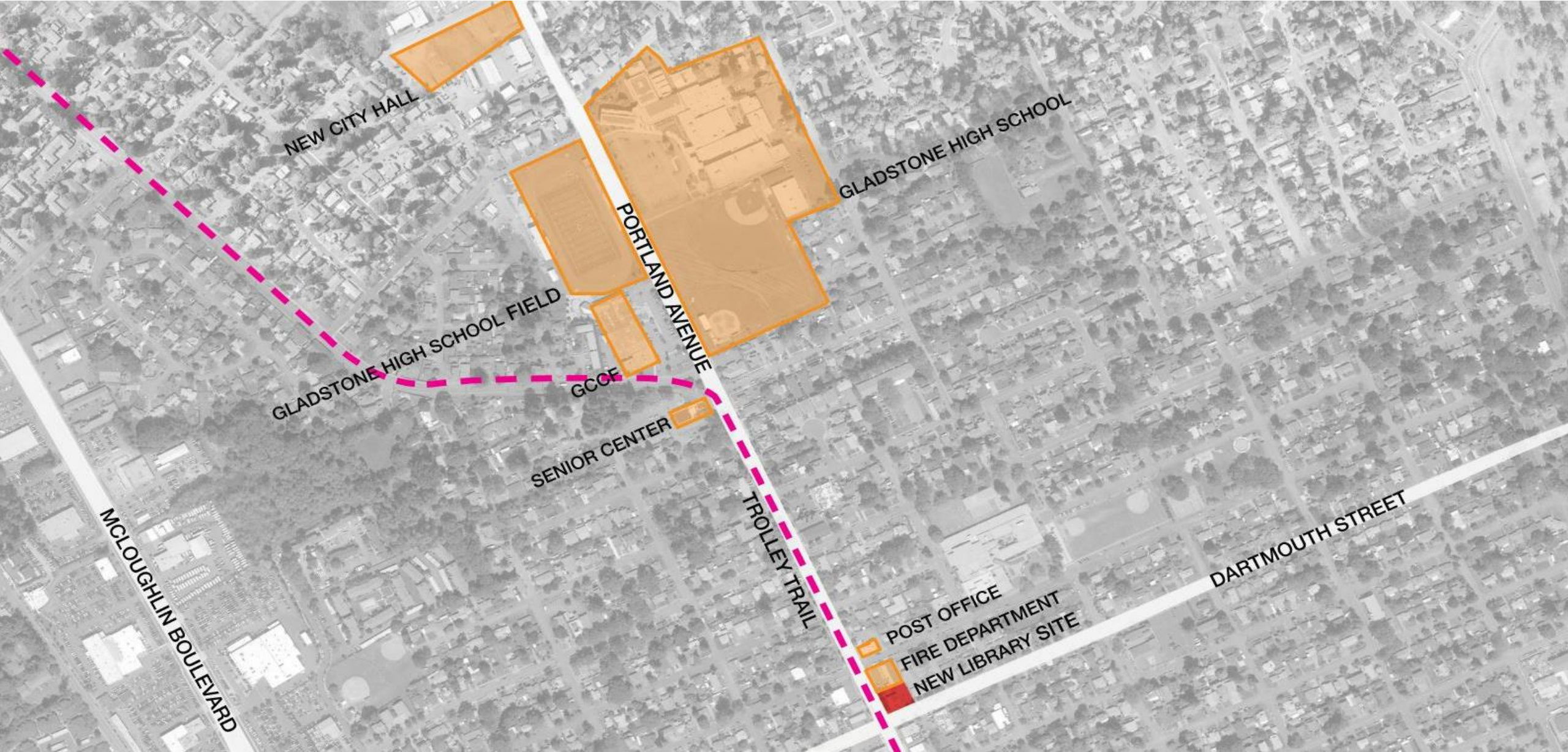
## GLADSTONE LIBRARY





# GLADSTONE CIVIC BUILDINGS

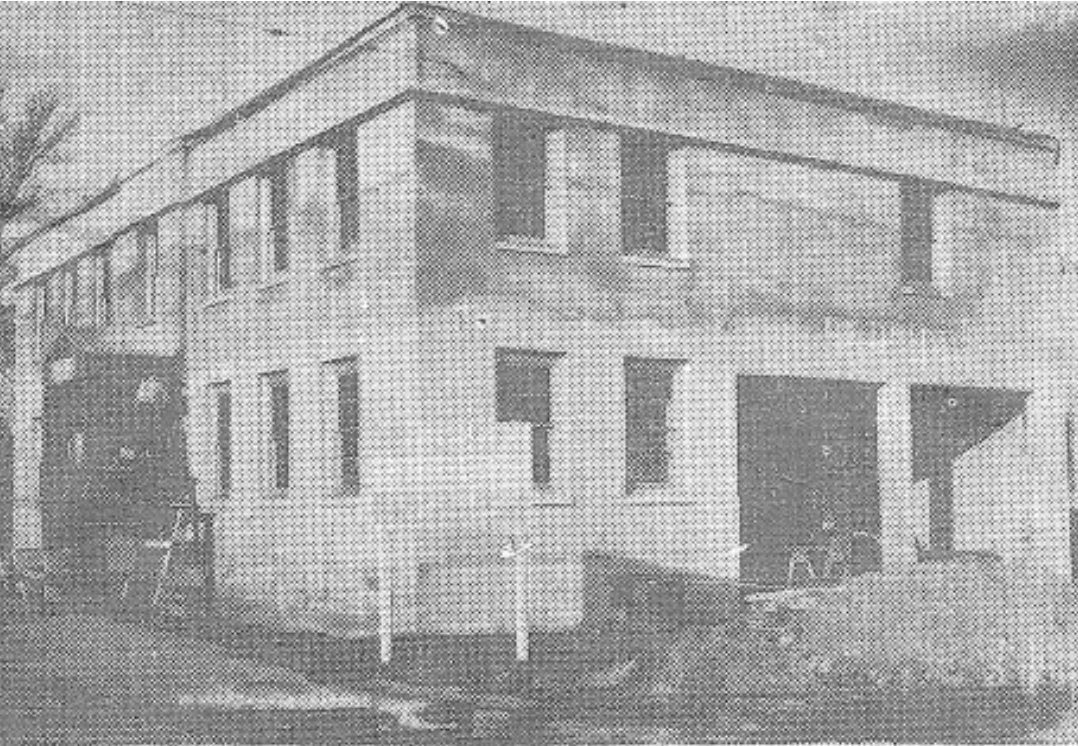
## GLADSTONE LIBRARY





# 1941 CITY HALL UNDER CONSTRUCTION & TODAY

## GLADSTONE LIBRARY





# LATE 1940'S FLYING A SERVICE STATION

## GLADSTONE LIBRARY





**POST OFFICE & FIRE STATION**  
GLADSTONE LIBRARY



**GLADSTONE HIGH SCHOOL**  
GLADSTONE LIBRARY





# GLADSTONE FAMILY & CHILDREN'S CENTER

## GLADSTONE LIBRARY





# EXISTING LIBRARY

## GLADSTONE LIBRARY





**GLADSTONE CIVIC CENTER**  
GLADSTONE LIBRARY





# GLADSTONE CIVIC CENTER

## GLADSTONE LIBRARY





# WOOD CONSTRUCTION (CROSS LAMINATED TIMBER- CLT) GLADSTONE LIBRARY





# LIBRARY COURTYARD

## GLADSTONE LIBRARY





# SUSTAINABLE DESIGN – NET ZERO ENERGY USE

## GLADSTONE LIBRARY





# SOLAR SCREENING GLADSTONE LIBRARY





# INTEGRATION OF ART & INDOOR EXHIBITS

## GLADSTONE LIBRARY





# OAK LODGE & GLADSTONE COMMUNITY PROJECT

GLADSTONE TASK FORCE PRESENTATION - GLADSTONE CHARACTER  
JUNE 10, 2020



**NORTH CLACKAMAS**  
PARKS & RECREATION DISTRICT

