



Department of Energy
Bonneville Power Administration
P.O. Box 3621
Portland, Oregon 97208-3621

ENVIRONMENT, FISH AND WILDLIFE

July 8, 2021

In reply refer to: ECC-4

Gary Schmidt
Chief Executive Officer
Clackamas County
2051 Kaen Road
Oregon City, OR 97045
gschmidt@clackamas.us

RE: Big Eddy-Ostrander No. 1 Reconductor Project
BPA CR Project No.: OR 2019 065

Dear Gary Schmidt:

The Bonneville Power Administration (BPA) proposes to reconductor BPA's Big Eddy-Ostrander No. 1 Transmission line on federal, county, and private land in Clackamas, Hood River, and Wasco counties, Oregon. Pursuant to its responsibilities under Section 106 of the National Historic Preservation Act and 36 CFR 800, BPA has determined that the proposed action is a federal undertaking that has the potential to cause effects on historic properties and seeks to initiate consultation with your office. BPA proposes to act as the lead federal agency for Section 106 compliance for this project.

Pursuant to 36 CFR 800.2(c) the consulting parties for this project include: the Confederated Tribes of Siletz Indians, the Confederated Tribes of the Warm Springs Reservation of Oregon, The Confederated Tribes of Grand Ronde, the Confederated Tribes and Bands of the Yakama Nation, the Confederated Tribes of the Umatilla Indian Reservation, the Nez Perce Tribe, the United States Forest Service - Mt Hood National Forest, the United States Forest Service - Columbia River Gorge National Scenic Area, the Bureau of Land Management - Northwest Oregon District Office, the Bureau of Land Management - Prineville District Office, Hood River County, Clackamas County, and the Oregon State Historic Preservation Office.

The Area of Potential Effects (APE) for the proposed project has been determined and is located on the attached vicinity map. The legal description of the project is described in the table below.

Township	Range	Section(s)
1 South	8 East	13, 24, 25, 26, 35
1 South	8.5 East	1, 11, 12, 14

1 North	9 East	33, 34, 35, 36
1 South	9 East	5, 6
1 North	10 East	31, 32, 33, 34, 35, 36
1 North	11 East	24, 25, 26, 27, 28, 29, 30, 31, 32, 34, 35
1 North	12 East	13, 19, 20, 21, 22, 23, 24, 26, 27, 28, 30
1 North	13 East	1, 10, 11, 12, 15, 16, 19, 20, 21
1 North	14 East	6
2 South	4 East	17, 20, 21, 22, 23, 24, 26
2 South	5 East	13, 19, 20, 21, 22, 23, 24
2 South	6 East	15, 16, 17, 18, 19, 20, 21, 22, 23, 24
2 South	7 East	19, 23, 24, 26, 27, 28, 29, 30
2 South	8 East	2 (PB 38), 3 (PB 39), 4 (PB 40), 8 (UP 8), 9 (UP 9), 17 (UP 17), 18 (PB 44), 19 (PB 45),

BPA proposes to reconductor 66.5 miles of the Big Eddy-Ostrander No. 1 500-kV transmission line. This transmission line was built in 1960, and the conductor has reached the end of its lifespan. BPA proposes to replace the conductor and associated hardware to maintain reliable electrical service and avoid safety risks to the public and transmission line workers.

Most construction activities would take place within the existing BPA right-of-way (ROW). Construction activities would include the construction of landings at transmission towers to create safe and level working surfaces for equipment, correction of impairments by raising towers in place or mid-span excavation, work on existing and new access roads, and removal of danger trees outside the ROW. Landings may vary in size, but would generally be 25 by 25 feet to 25 by 75 feet in area and would be constructed using heavy equipment such as excavators. To correct impairments (areas where conductor clearance does not meet National Electrical Safety Code standards), towers would either be raised in place or raised within 50 feet of the current tower location. In some cases, ground excavation mid-span may be completed to correct the impairment. Approximately 50 miles of existing access roads would be improved or reconstructed, and other access roads within the APE may require additional work following construction. In addition, a small number of new roads would be constructed, and a small number of existing roads would be decommissioned. Road improvements would include the construction of drain dips, cross drains, stream culverts, temporary and permanent bridges, installation of new gates, replacement of existing gates, and improvement of existing fords. Danger trees (trees outside the ROW that are at risk of falling into the ROW) would also be removed using chainsaws and other hand tools. All access roads and staging areas are included in the APE.

In this initiation of consultation, BPA seeks your comment on the APE discussed above. We also seek any information that you might have on known cultural resources in the project area.

Upon receipt of comments from your office and the consulting parties concerning the proposed project and APE, and following background research of the APE, BPA will determine the

appropriate action for identification of historic properties within the APE. This may include pedestrian survey and excavation of shovel test probes in high-probability areas.

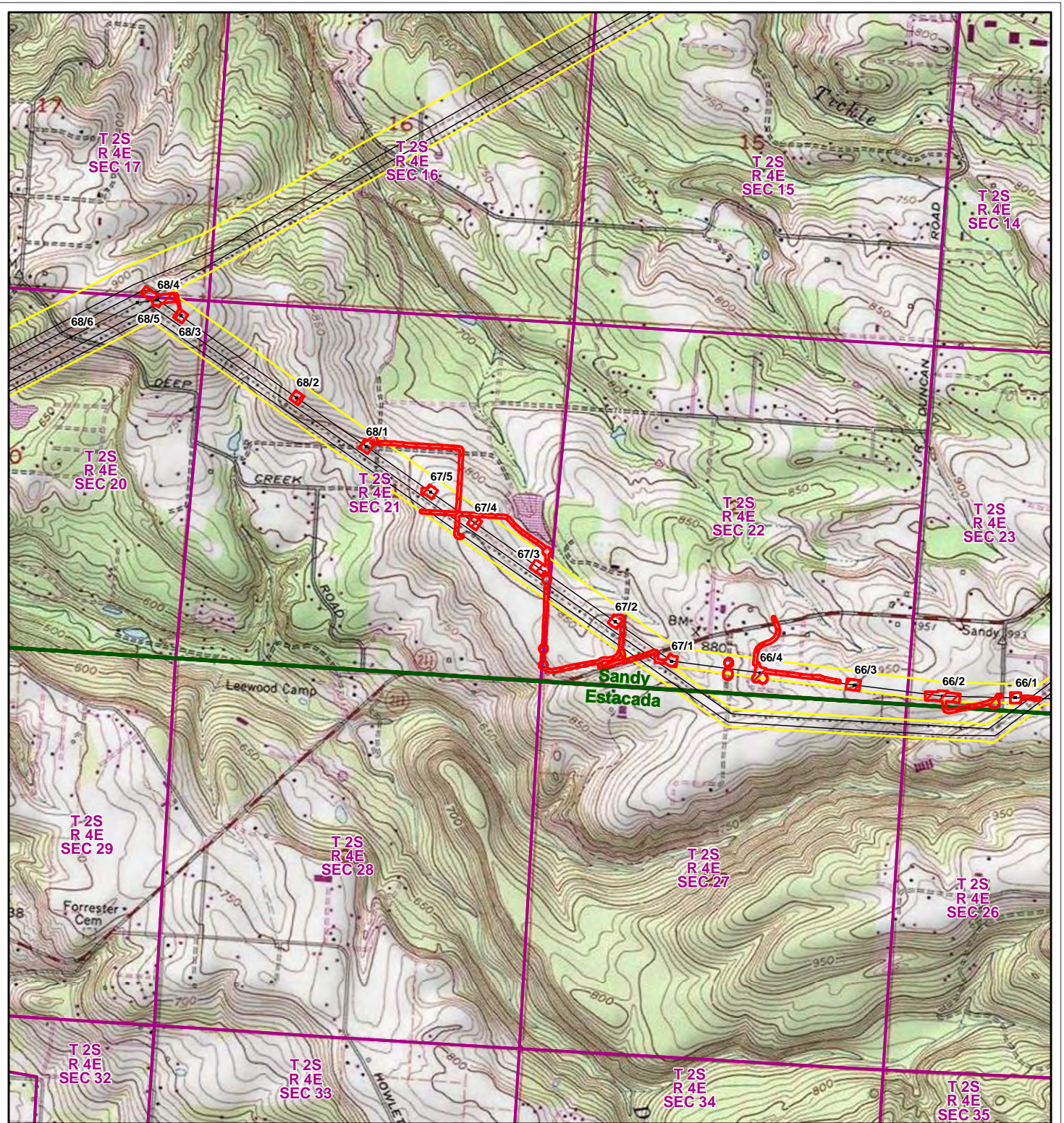
If you have any questions please do not hesitate to contact Anna Neuzil at aaneuzil@bpa.gov or 503-230-4642.

Sincerely,

A handwritten signature in blue ink, appearing to read "S. Schmidt", with a long horizontal flourish extending to the right.

Sunshine Schmidt
Supervisory Archaeologist

Enclosure:
APE Map



Big Eddy-Ostrander Reconductoring Project Area of Potential Effects

Total Acres: 1139.76

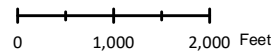
- Area of Potential Effect
- BPA Transmission Line
- PLSS Section
- BPA Transmission Line Structure
- BPA Right-of-Way
- USGS 7.5 Minute Quadrangle

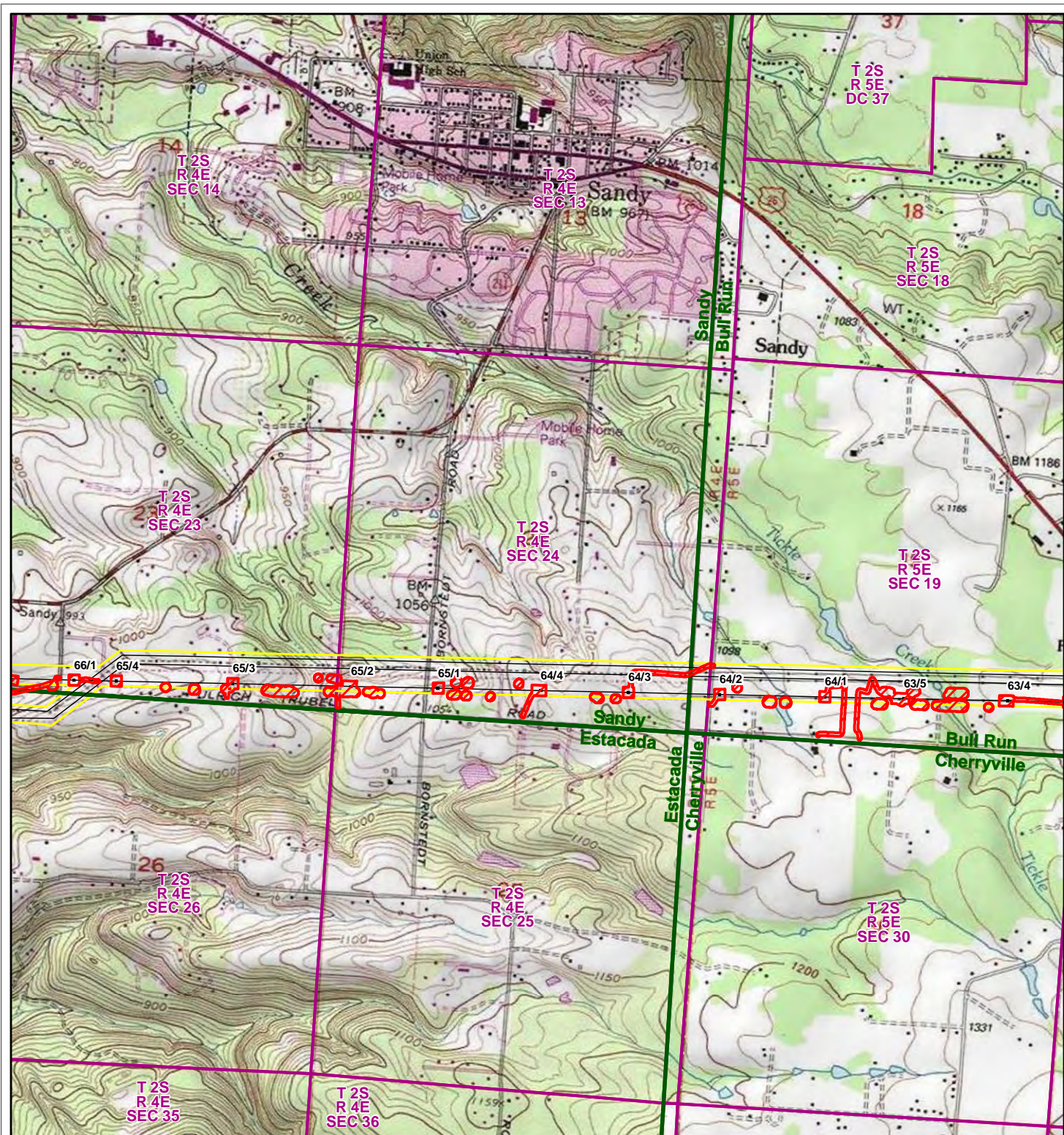
USGS 7.5 Minute Quadrangle
Estacada
Sandy

County and State
Clackamas, OR



6/22/2021





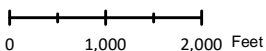
Big Eddy-Ostrander Reconductoring Project Area of Potential Effects

Total Acres: 1139.76

- Area of Potential Effect
- BPA Transmission Line
- PLSS Section
- BPA Transmission Line Structure
- BPA Right-of-Way
- USGS 7.5 Minute Quadrangle

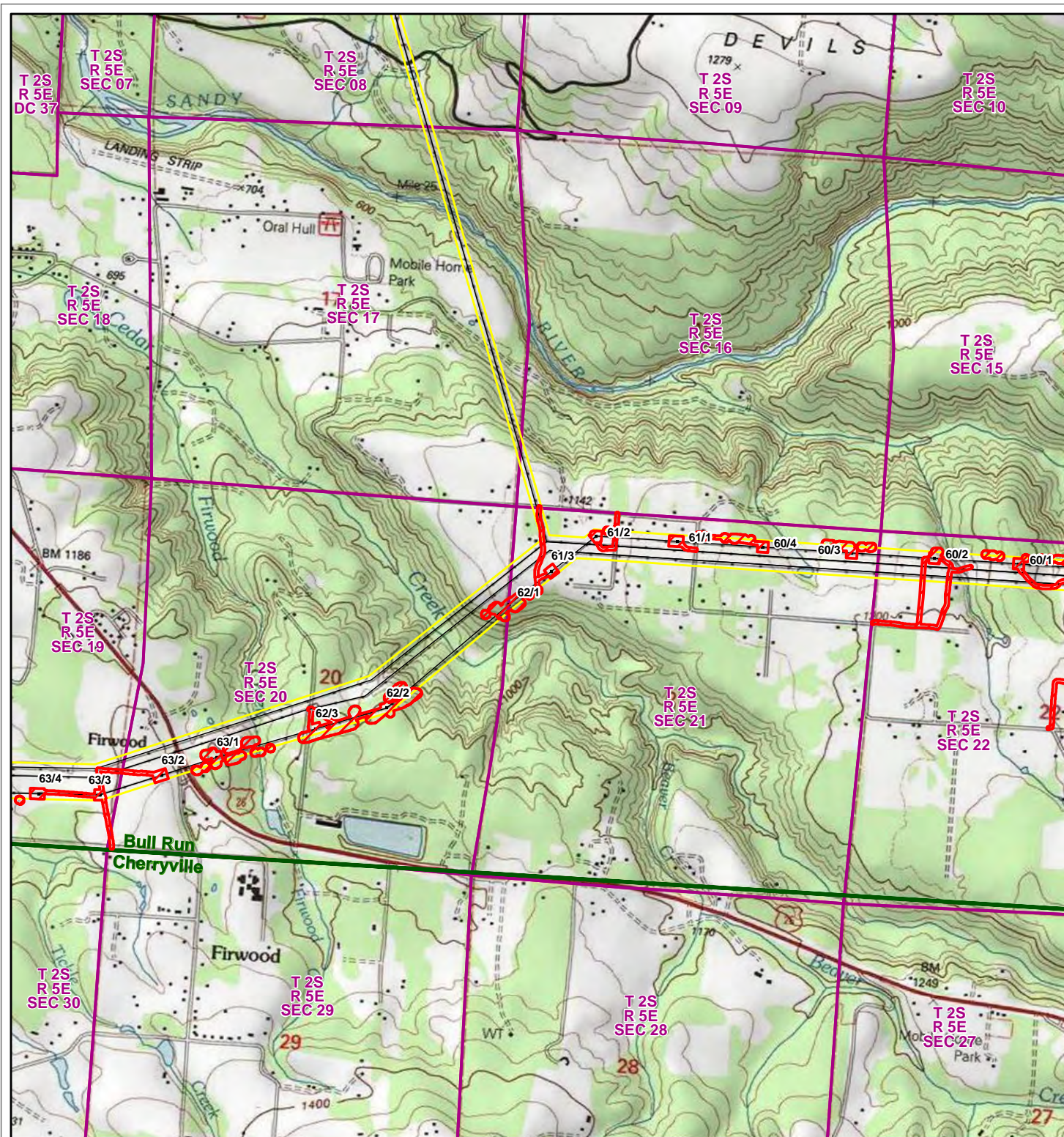
USGS 7.5 Minute Quadrangle
 Bull Run
 Cherryville
 Estacada
 Sandy

County and State
 Clackamas, OR



6/22/2021





Big Eddy-Ostrander Reconductoring Project Area of Potential Effects

Total Acres: 1139.76

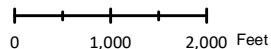
- Area of Potential Effect
- BPA Transmission Line
- PLSS Section
- BPA Transmission Line Structure
- BPA Right-of-Way
- USGS 7.5 Minute Quadrangle

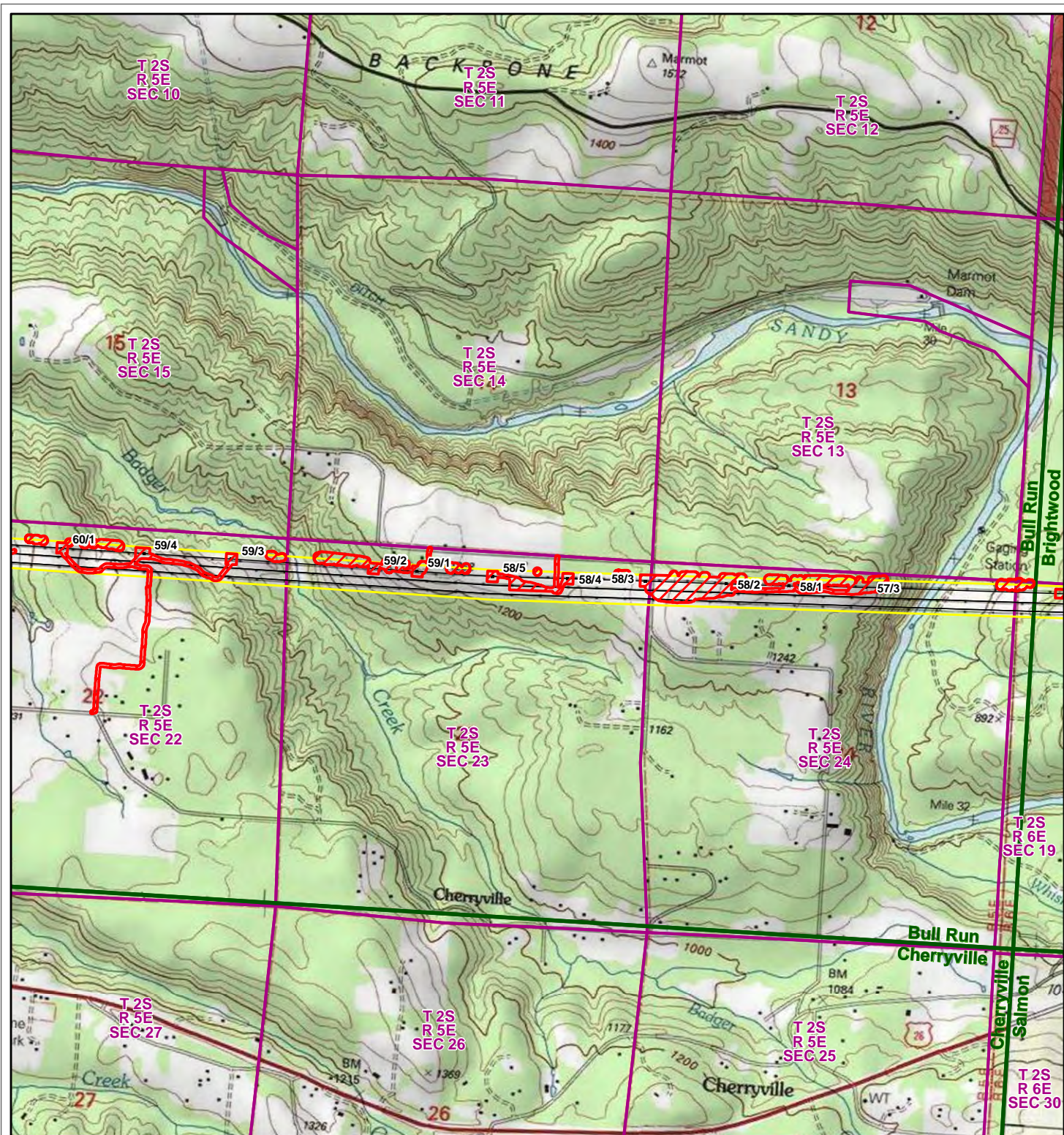
USGS 7.5 Minute Quadrangle
Bull Run
Cherryville

County and State
Clackamas, OR



6/22/2021





Big Eddy-Ostrander Reconductoring Project Area of Potential Effects

Total Acres: 1139.76

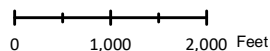
- Area of Potential Effect
- BPA Transmission Line
- PLSS Section
- BPA Transmission Line Structure
- BPA Right-of-Way
- USGS 7.5 Minute Quadrangle

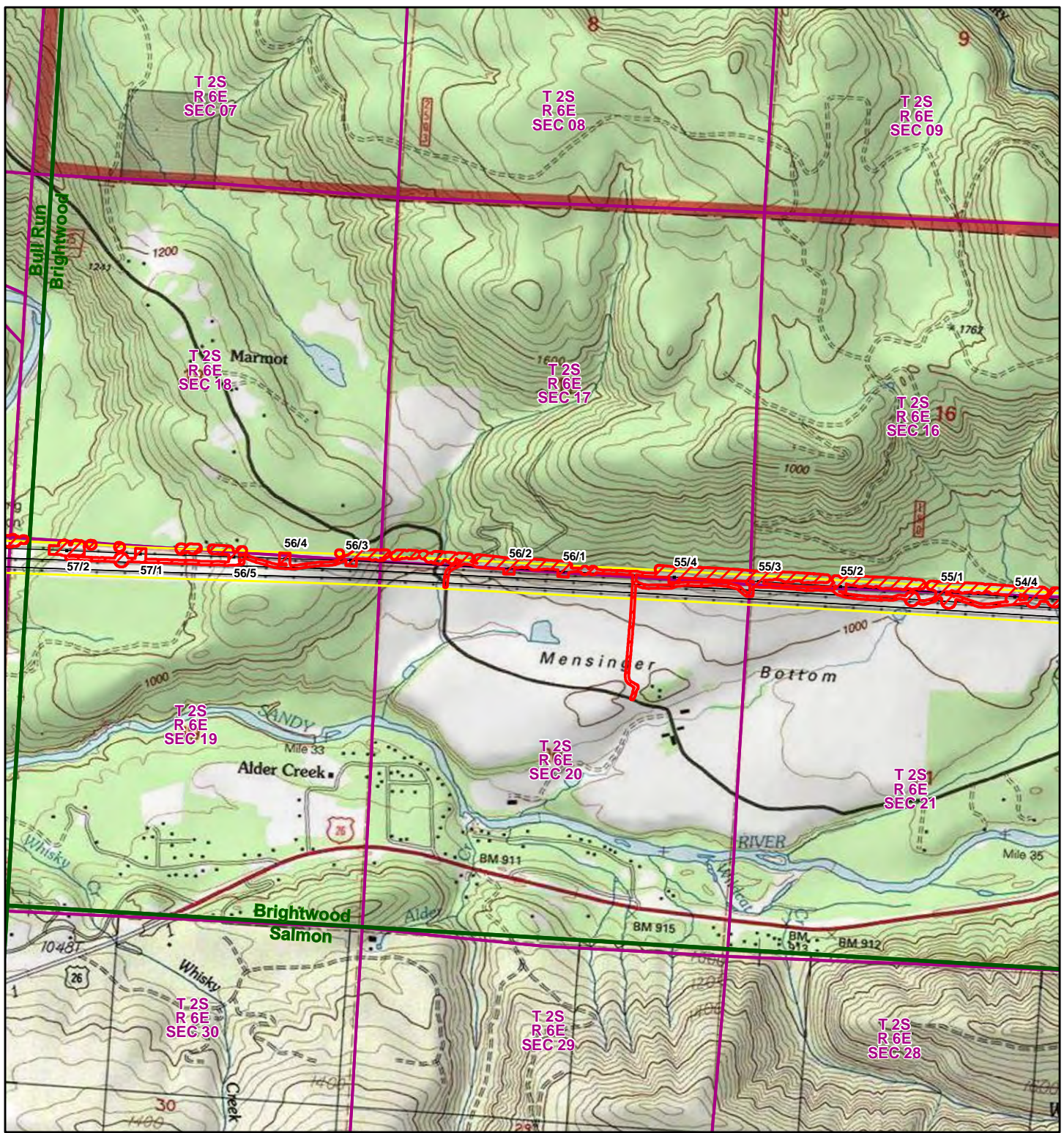
USGS 7.5 Minute Quadrangle
 Brightwood
 Bull Run
 Cherryville
 Salmon

County and State
 Clackamas, OR



6/22/2021





Big Eddy-Ostrander Reconductoring Project Area of Potential Effects

Total Acres: 1139.76

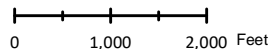
- Area of Potential Effect
- BPA Transmission Line
- PLSS Section
- BPA Transmission Line Structure
- BPA Right-of-Way
- USGS 7.5 Minute Quadrangle

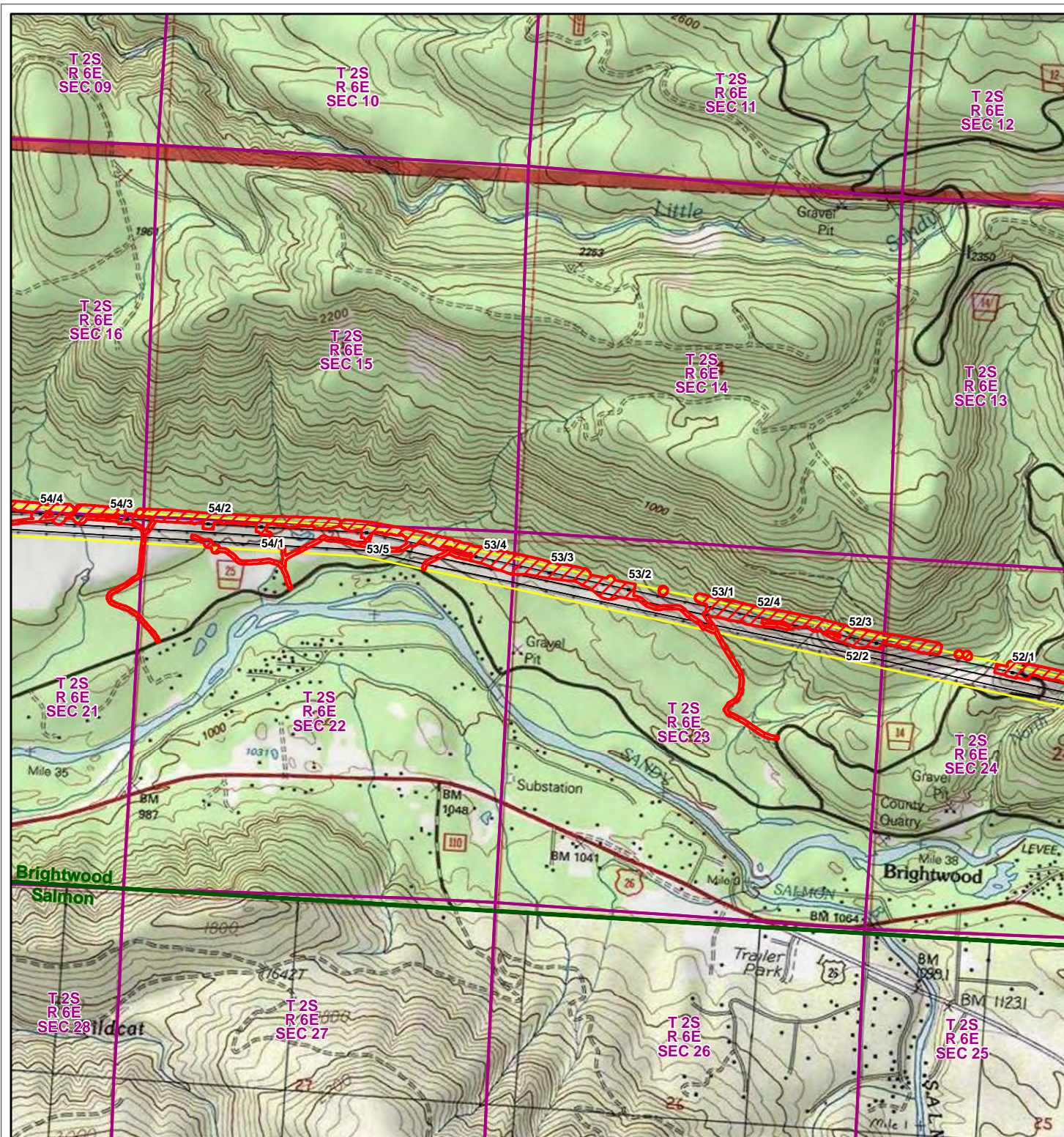
USGS 7.5 Minute Quadrangle
Brightwood
Bull Run
Salmon

County and State
Clackamas, OR



6/22/2021





Big Eddy-Ostrander Reconductoring Project Area of Potential Effects

Total Acres: 1139.76

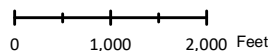
- Area of Potential Effect
- BPA Transmission Line Structure
- BPA Right-of-Way
- PLSS Section
- USGS 7.5 Minute Quadrangle

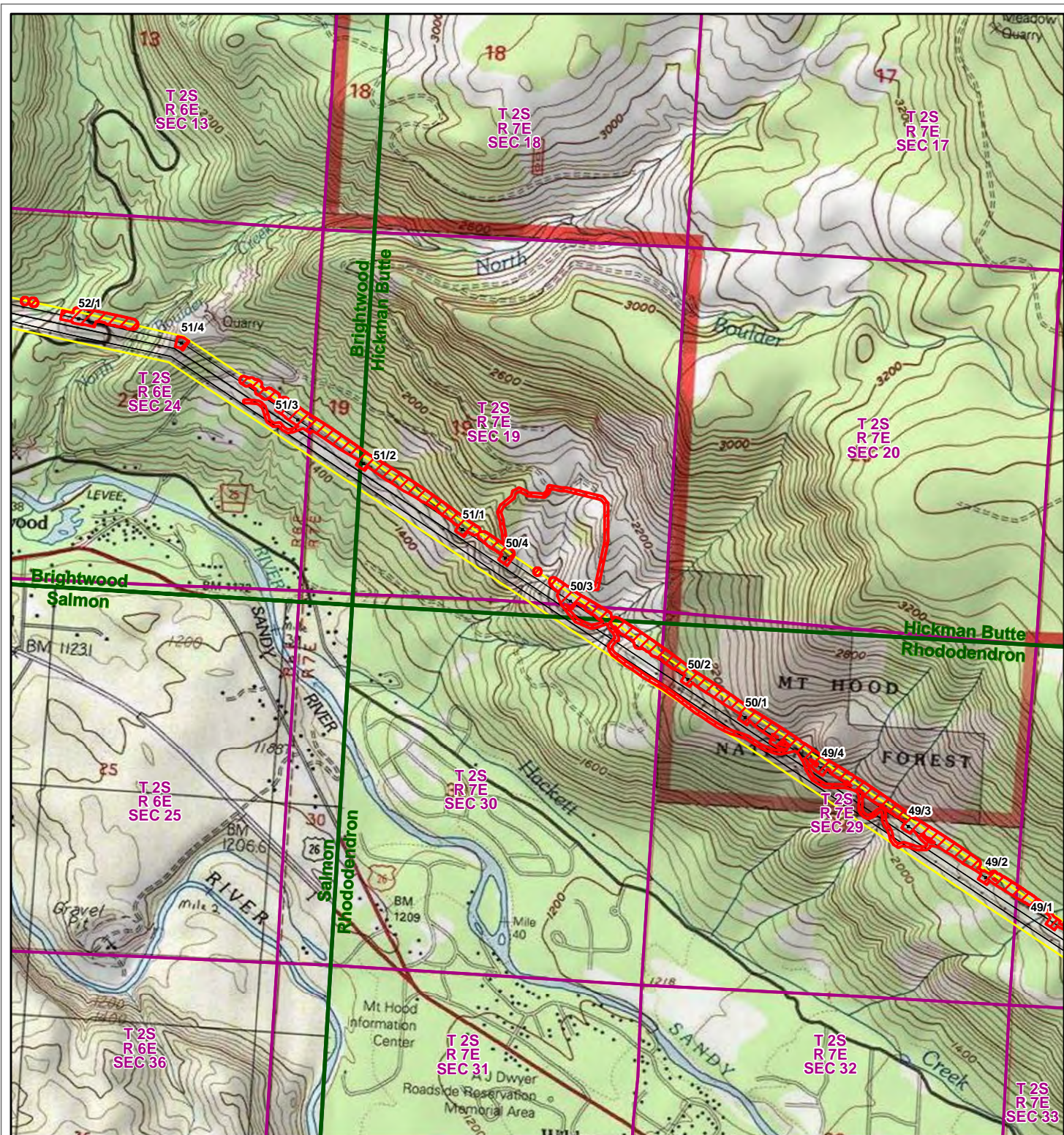
USGS 7.5 Minute Quadrangle
Brightwood
Salmon

County and State
Clackamas, OR



6/22/2021





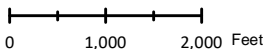
Big Eddy-Ostrander Reconductoring Project Area of Potential Effects

Total Acres: 1139.76

- Area of Potential Effect
- BPA Transmission Line
- PLSS Section
- BPA Transmission Line Structure
- BPA Right-of-Way
- USGS 7.5 Minute Quadrangle

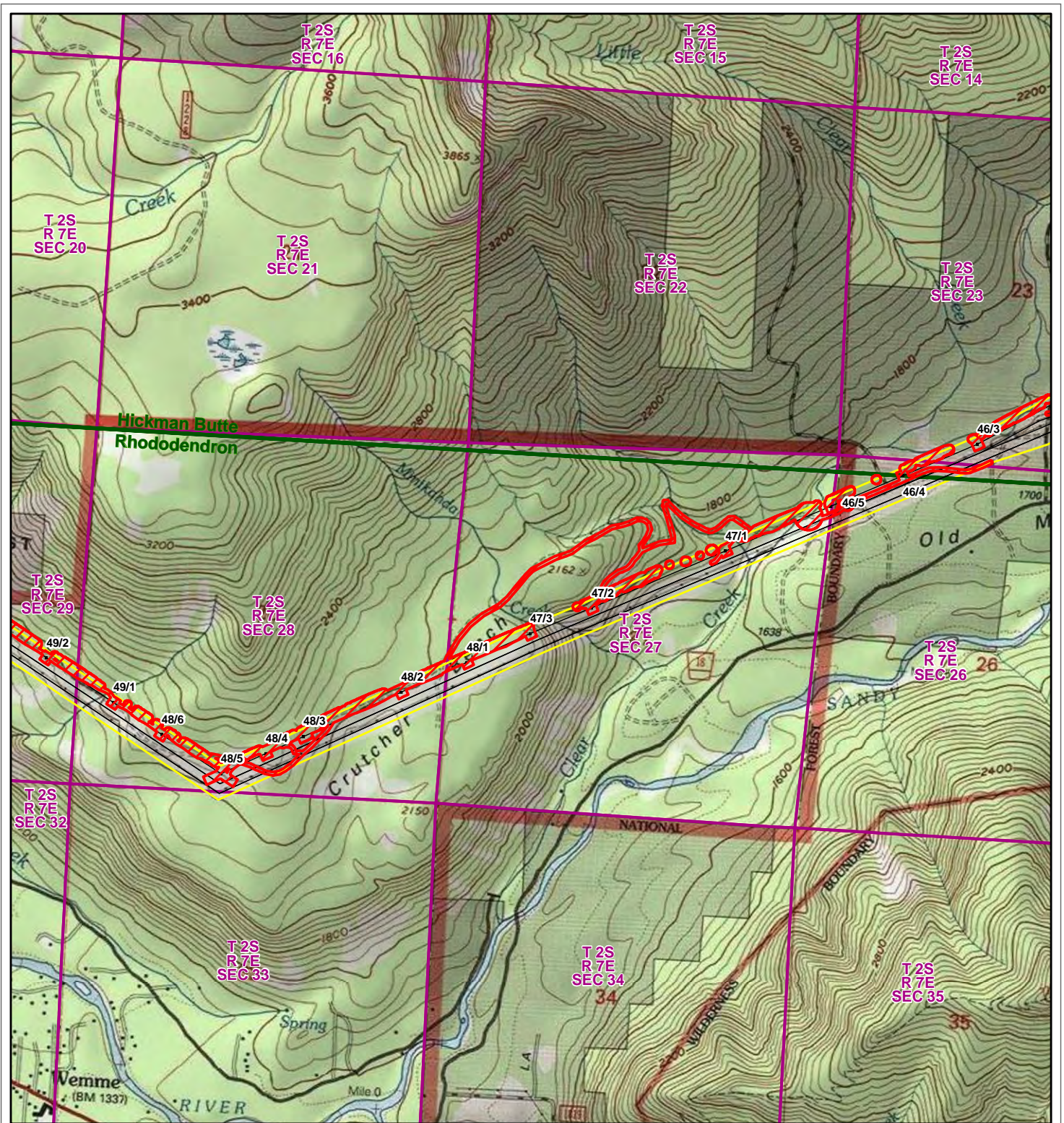
USGS 7.5 Minute Quadrangle
Brightwood
Hickman Butte
Rhododendron
Salmon

County and State
Clackamas, OR



6/22/2021





Big Eddy-Ostrander Reconductoring Project Area of Potential Effects

Total Acres: 1139.76

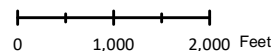
- Area of Potential Effect
- BPA Transmission Line
- PLSS Section
- BPA Right-of-Way
- USGS 7.5 Minute Quadrangle
- BPA Transmission Line Structure

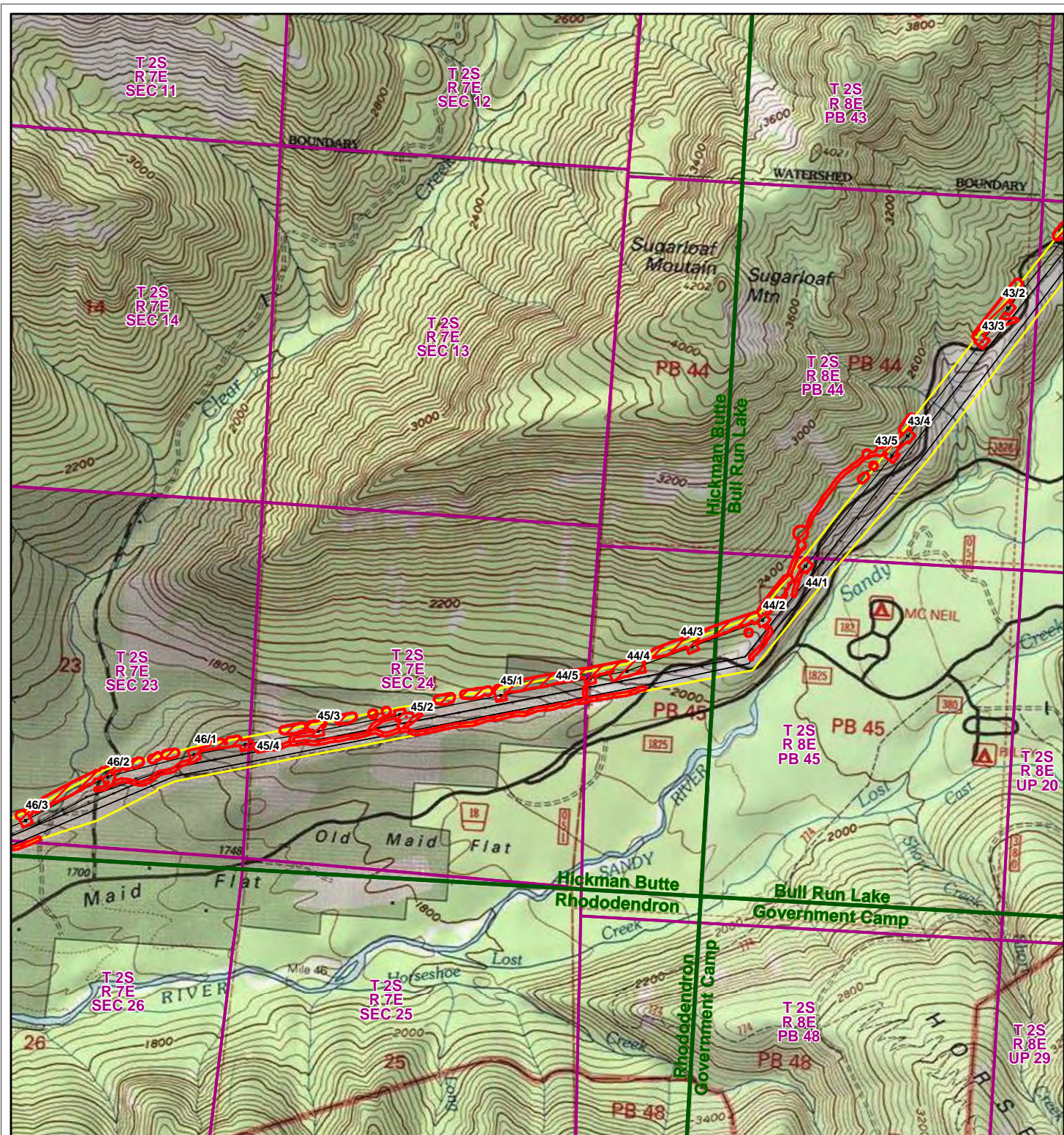
USGS 7.5 Minute Quadrangle
Hickman Butte
Rhododendron

County and State
Clackamas, OR



6/22/2021





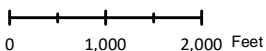
Big Eddy-Ostrander Reconductoring Project Area of Potential Effects

Total Acres: 1139.76

- Area of Potential Effect
- BPA Transmission Line
- PLSS Section
- BPA Transmission Line Structure
- BPA Right-of-Way
- USGS 7.5 Minute Quadrangle

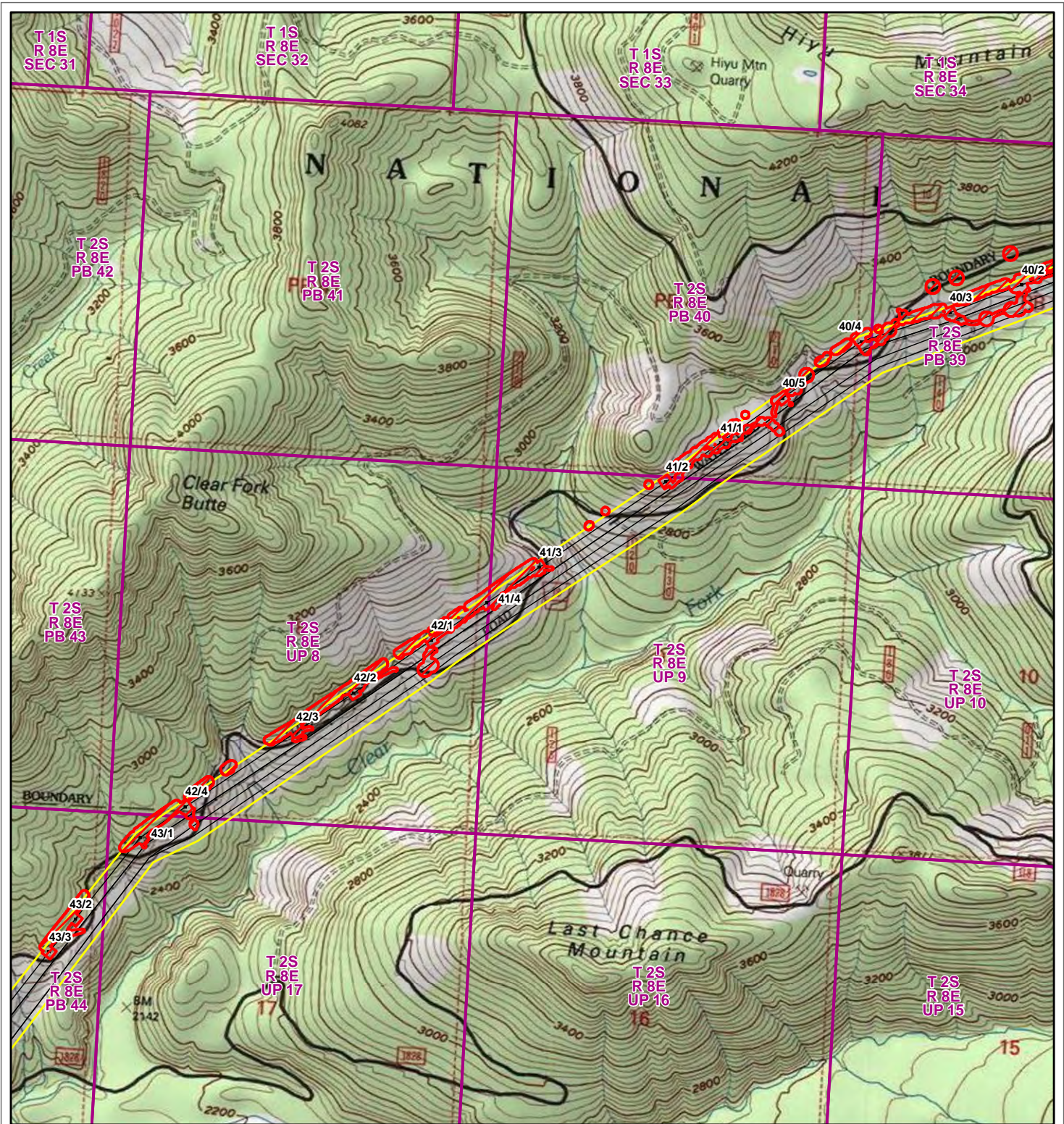
USGS 7.5 Minute Quadrangle
Bull Run Lake
Government Camp
Hickman Butte
Rhododendron

County and State
Clackamas, OR



6/22/2021





Big Eddy-Ostrander Reconductoring Project Area of Potential Effects

Total Acres: 1139.76

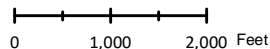
- Area of Potential Effect
- BPA Transmission Line
- PLSS Section
- BPA Transmission Line Structure
- BPA Right-of-Way
- USGS 7.5 Minute Quadrangle

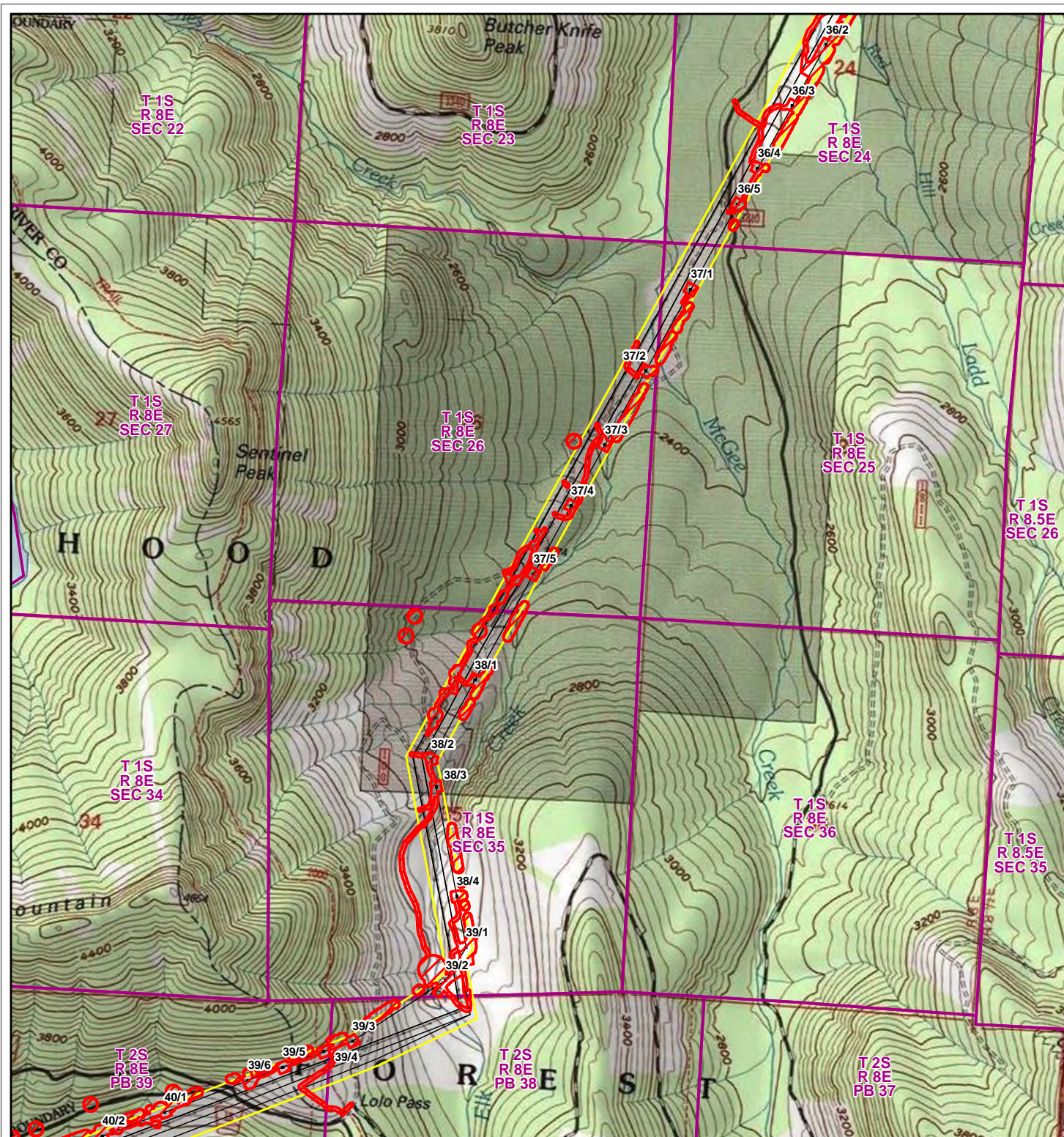
USGS 7.5 Minute Quadrangle
Bull Run Lake

County and State
Clackamas, OR



6/22/2021





Big Eddy-Ostrander Reconductoring Project Area of Potential Effects

Total Acres: 1139.76

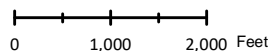
- Area of Potential Effect
- BPA Transmission Line
- PLSS Section
- BPA Transmission Line Structure
- BPA Right-of-Way
- USGS 7.5 Minute Quadrangle

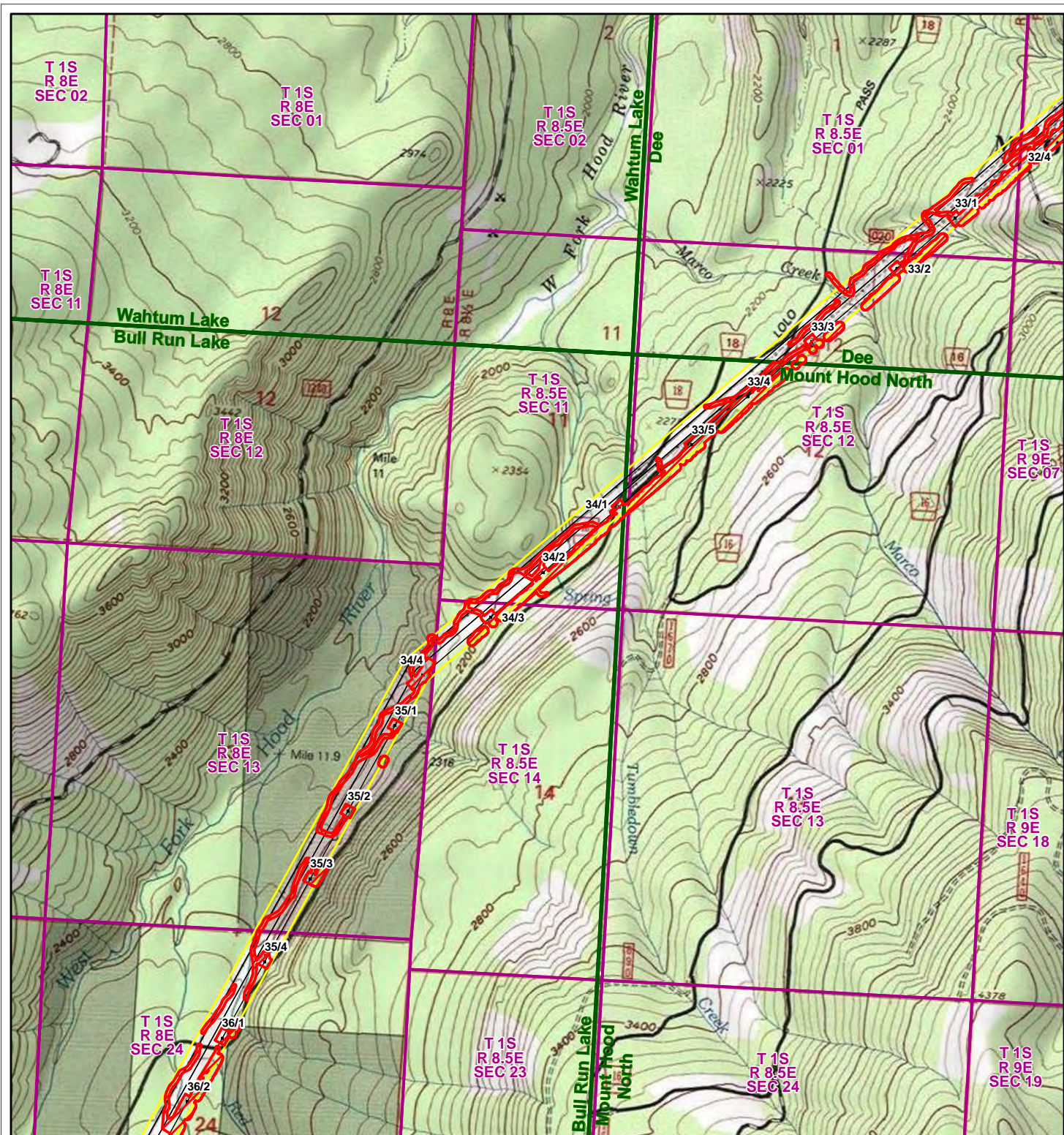
USGS 7.5 Minute Quadrangle
Bull Run Lake

County and State
Clackamas, OR
Hood River, OR



6/22/2021





Big Eddy-Ostrander Reconductoring Project Area of Potential Effects

Total Acres: 1139.76

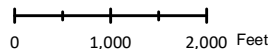
- Area of Potential Effect
- BPA Transmission Line
- PLSS Section
- BPA Transmission Line Structure
- BPA Right-of-Way
- USGS 7.5 Minute Quadrangle

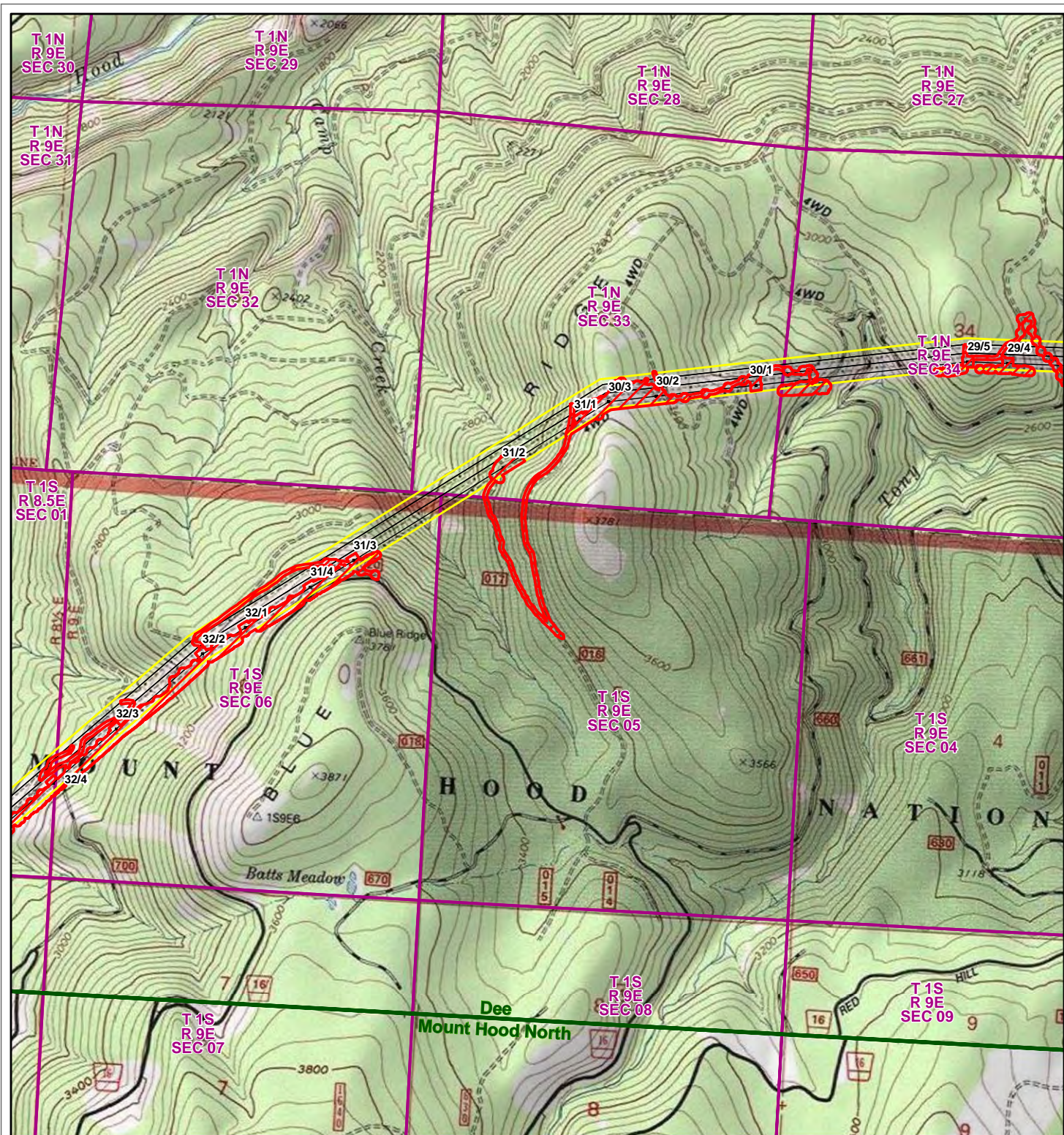
USGS 7.5 Minute Quadrangle
 Bull Run Lake
 Dee
 Mount Hood North
 Wahtum Lake

County and State
 Hood River, OR



6/22/2021





Big Eddy-Ostrander Reconductoring Project Area of Potential Effects

Total Acres: 1139.76

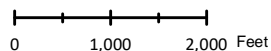
- Area of Potential Effect
- BPA Transmission Line
- PLSS Section
- BPA Transmission Line Structure
- BPA Right-of-Way
- USGS 7.5 Minute Quadrangle

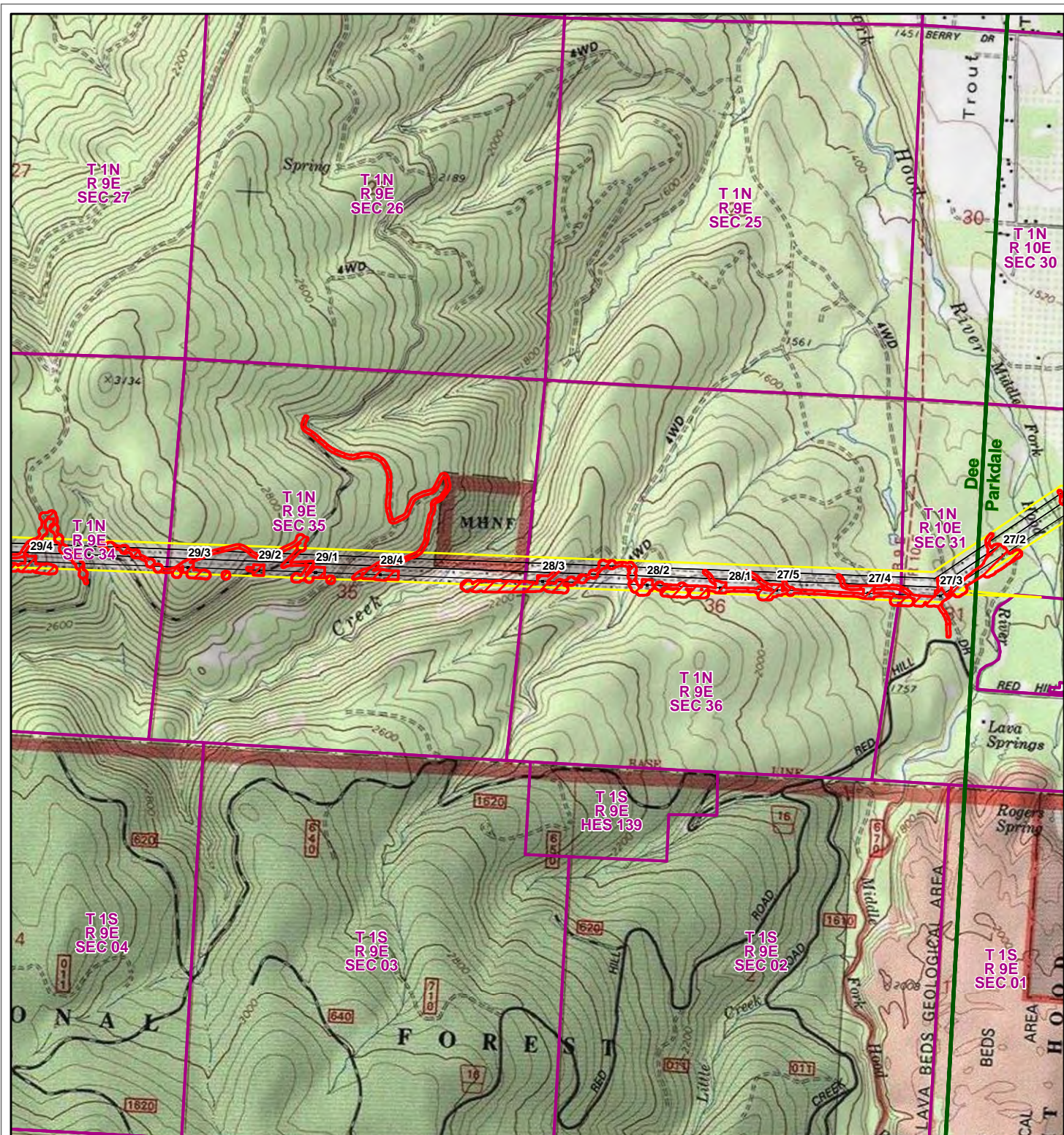
USGS 7.5 Minute Quadrangle
Dee
Mount Hood North

County and State
Hood River, OR



6/22/2021





Big Eddy-Ostrander Reconductoring Project Area of Potential Effects

Total Acres: 1139.76

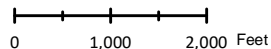
- Area of Potential Effect
- BPA Transmission Line
- PLSS Section
- BPA Transmission Line Structure
- BPA Right-of-Way
- USGS 7.5 Minute Quadrangle

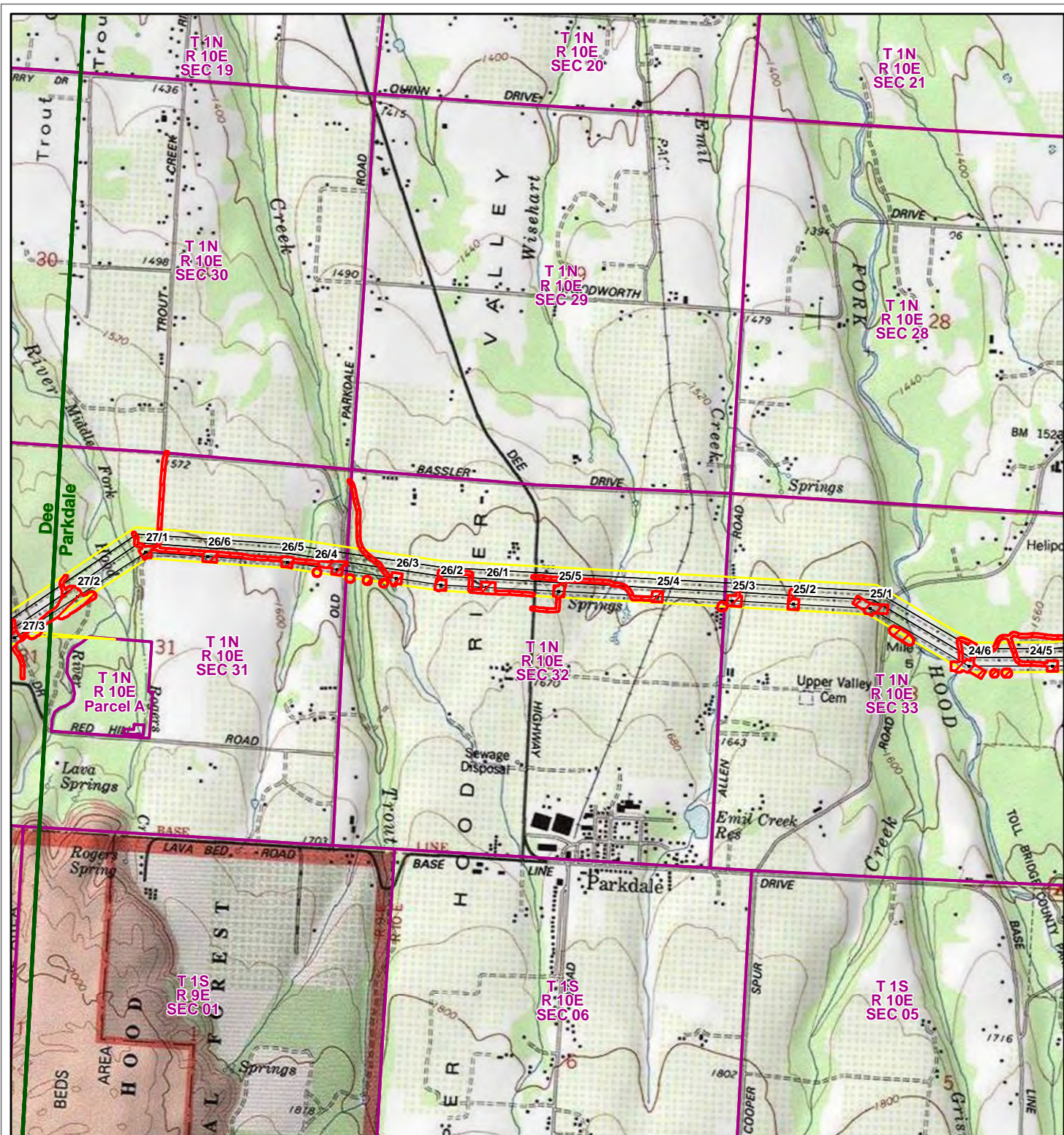
USGS 7.5 Minute Quadrangle
Dee
Parkdale

County and State
Hood River, OR



6/22/2021





Big Eddy-Ostrander Reconductoring Project Area of Potential Effects

Total Acres: 1139.76

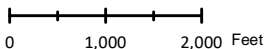
6/22/2021

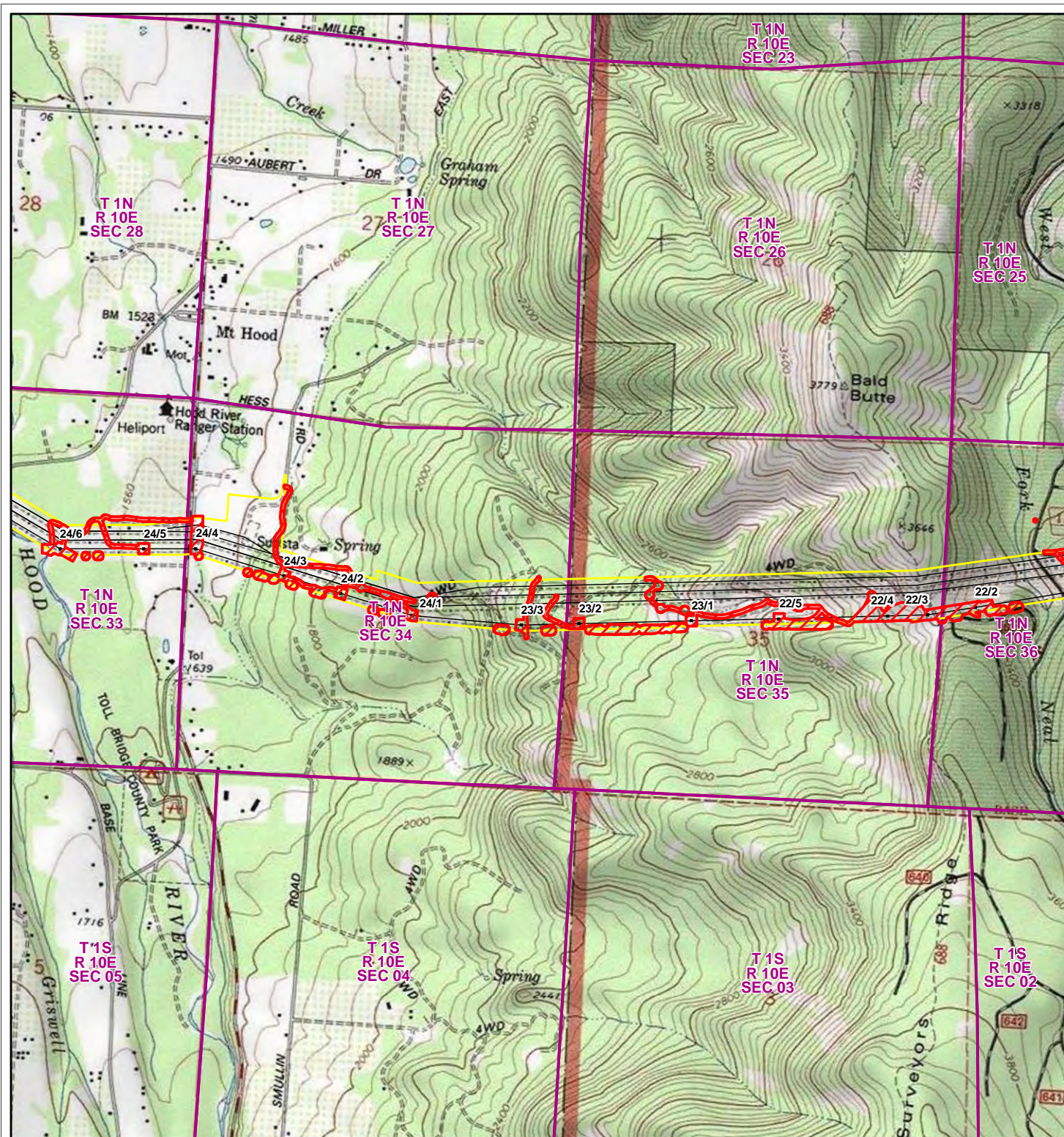
- Area of Potential Effect
- BPA Transmission Line
- PLSS Section
- BPA Transmission Line Structure
- BPA Right-of-Way
- USGS 7.5 Minute Quadrangle

USGS 7.5 Minute Quadrangle

County and State
Hood River, OR

Dee
Parkdale





Big Eddy-Ostrander Reconductoring Project Area of Potential Effects

Total Acres: 1139.76

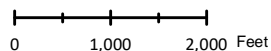
- Area of Potential Effect
- BPA Transmission Line
- PLSS Section
- BPA Transmission Line Structure
- BPA Right-of-Way
- USGS 7.5 Minute Quadrangle

USGS 7.5 Minute Quadrangle
Parkdale

County and State
Hood River, OR



6/22/2021





Big Eddy-Ostrander Reconductoring Project Area of Potential Effects

Total Acres: 1139.76

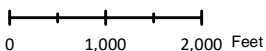
- Area of Potential Effect
- BPA Transmission Line
- PLSS Section
- BPA Transmission Line Structure
- BPA Right-of-Way
- USGS 7.5 Minute Quadrangle

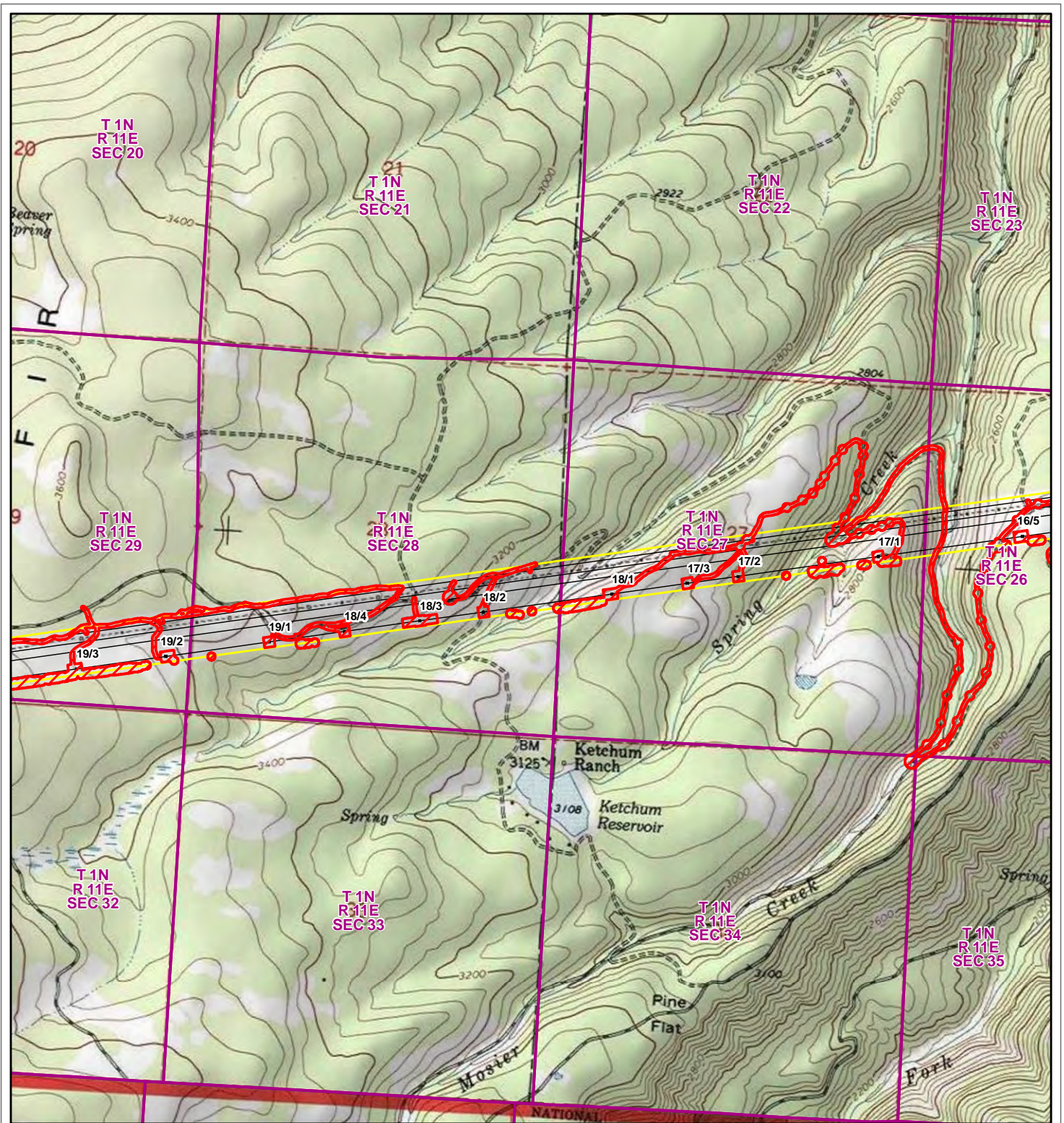
USGS 7.5 Minute Quadrangle
Ketchum Reservoir
Parkdale

County and State
Hood River, OR
Wasco, OR



6/22/2021





Big Eddy-Ostrander Reconductoring Project Area of Potential Effects

Total Acres: 1139.76

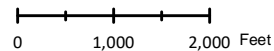
- Area of Potential Effect
- BPA Transmission Line
- PLSS Section
- BPA Transmission Line Structure
- BPA Right-of-Way
- USGS 7.5 Minute Quadrangle

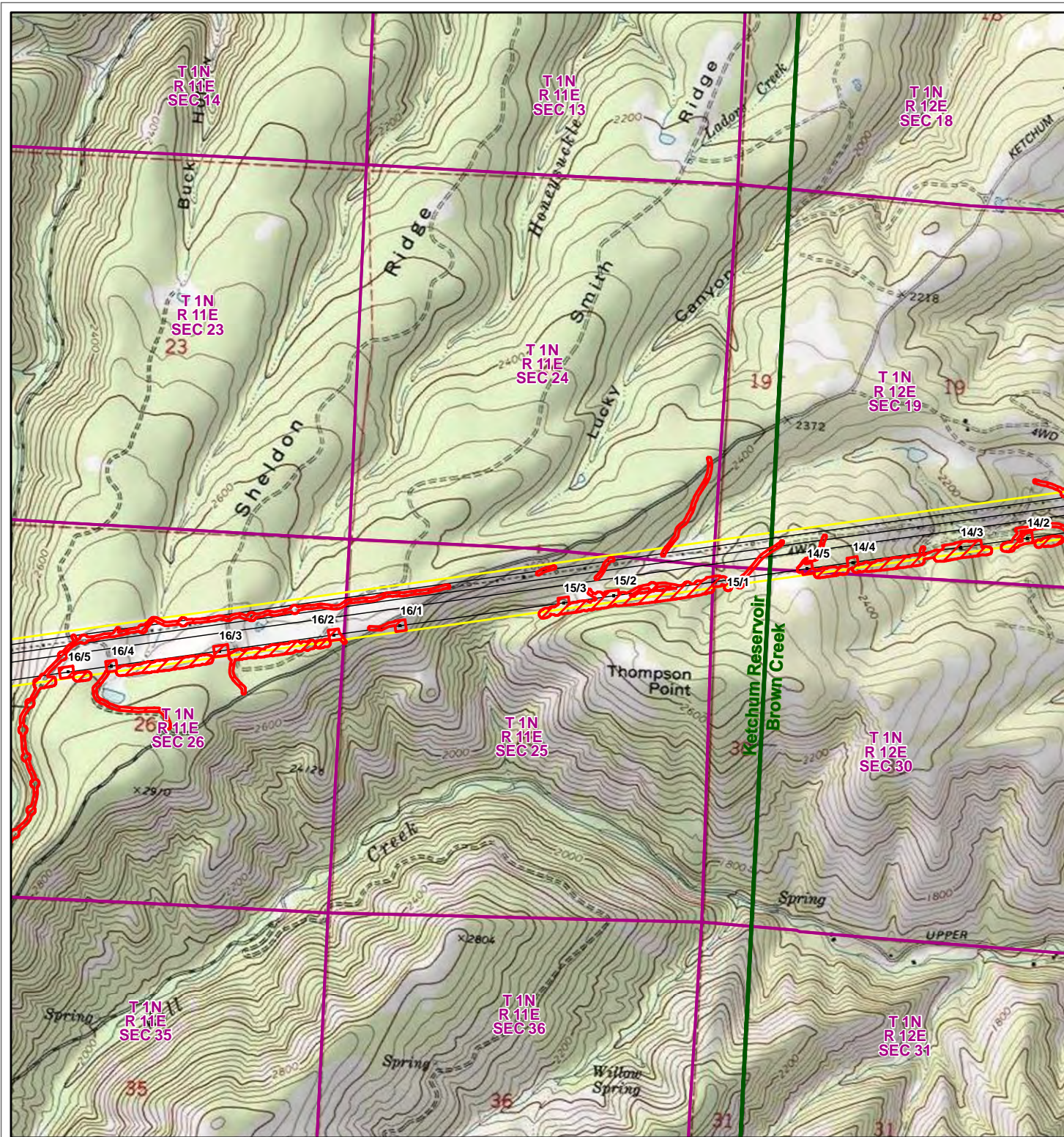
USGS 7.5 Minute Quadrangle
Ketchum Reservoir

County and State
Hood River, OR
Wasco, OR



6/22/2021





Big Eddy-Ostrander Reconductoring Project Area of Potential Effects

Total Acres: 1139.76

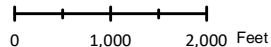
- Area of Potential Effect
- BPA Transmission Line
- PLSS Section
- BPA Right-of-Way
- USGS 7.5 Minute Quadrangle

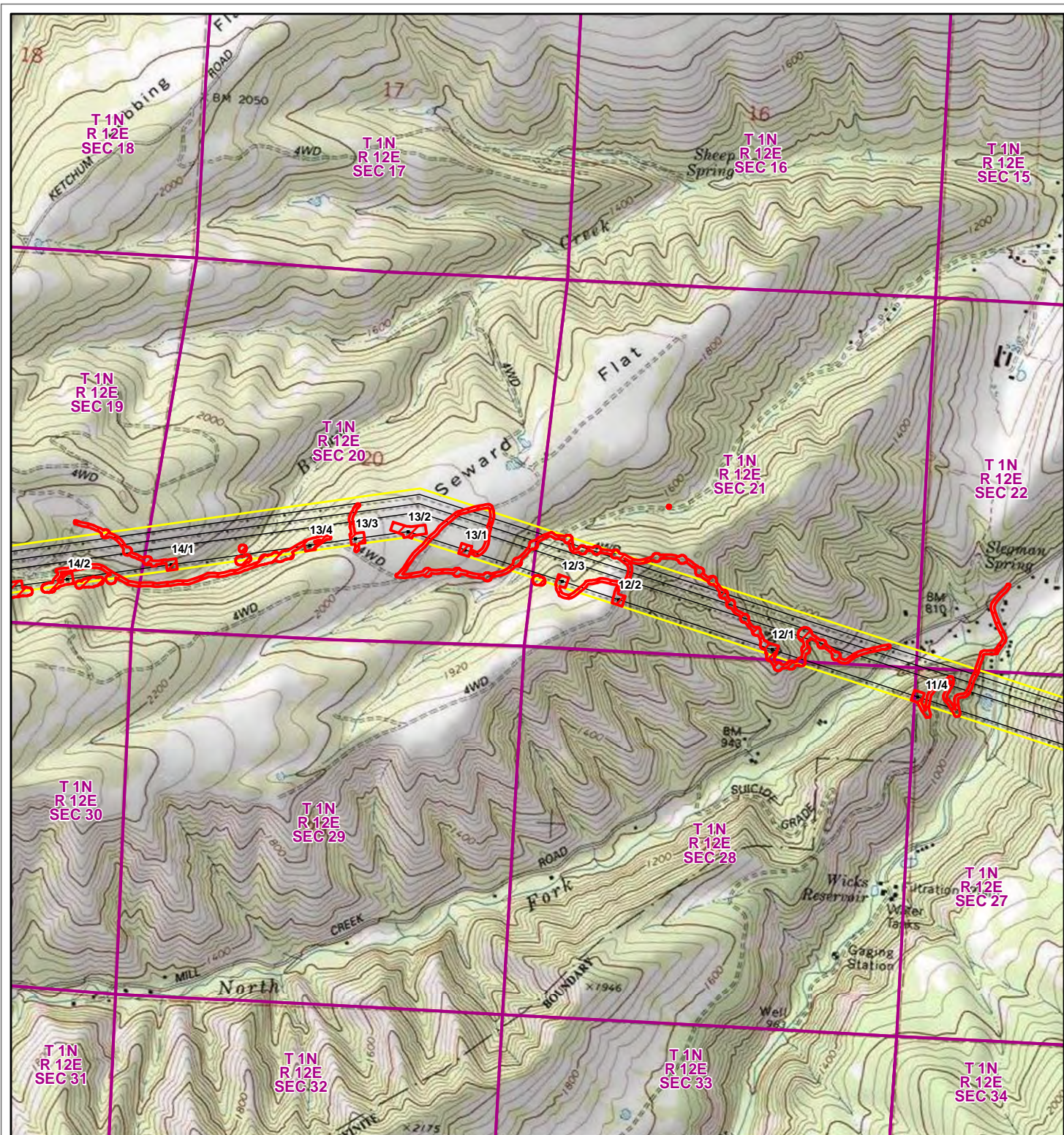
USGS 7.5 Minute Quadrangle
Brown Creek
Ketchum Reservoir

County and State
Wasco, OR



6/22/2021





Big Eddy-Ostrander Reconductoring Project Area of Potential Effects

Total Acres: 1139.76

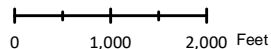
- Area of Potential Effect
- BPA Transmission Line
- PLSS Section
- BPA Transmission Line Structure
- BPA Right-of-Way
- USGS 7.5 Minute Quadrangle

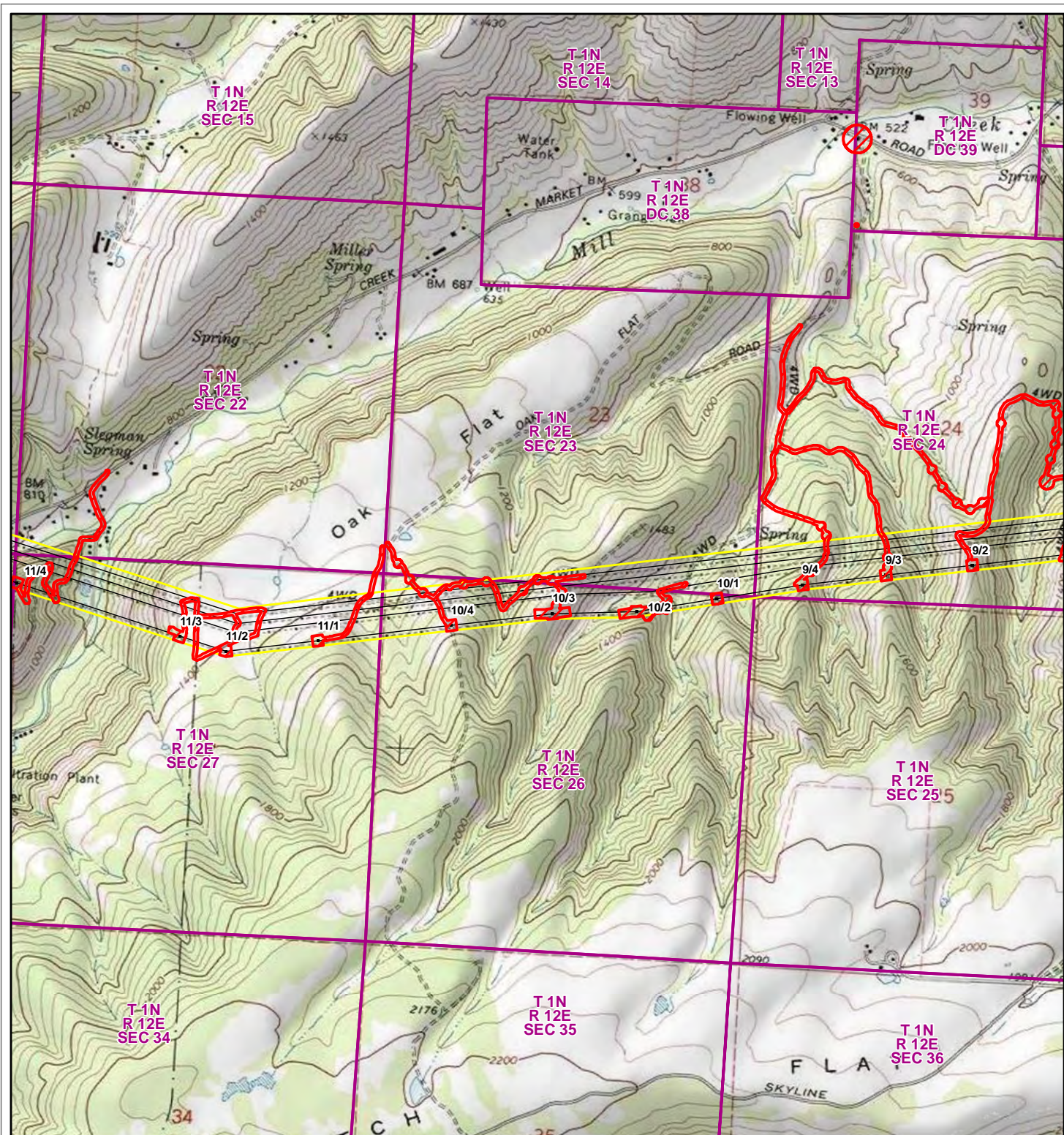
USGS 7.5 Minute Quadrangle
Brown Creek

County and State
Wasco, OR



6/22/2021





Big Eddy-Ostrander Reconductoring Project Area of Potential Effects

Total Acres: 1139.76

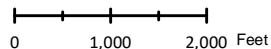
- Area of Potential Effect
- BPA Transmission Line
- PLSS Section
- BPA Transmission Line Structure
- BPA Right-of-Way
- USGS 7.5 Minute Quadrangle

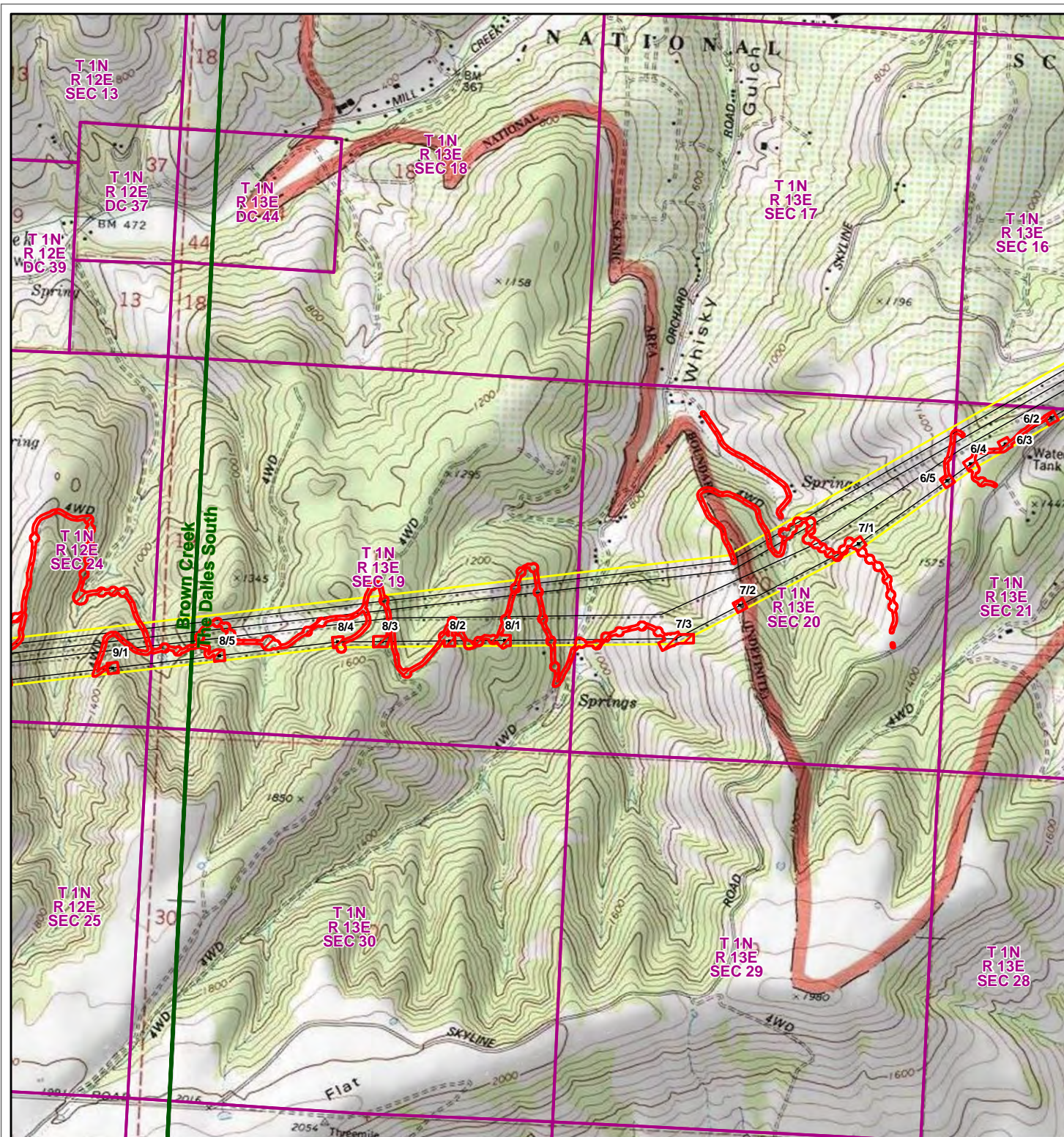
USGS 7.5 Minute Quadrangle
Brown Creek

County and State
Wasco, OR



6/22/2021





Big Eddy-Ostrander Reconductoring Project Area of Potential Effects

Total Acres: 1139.76

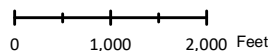
- Area of Potential Effect
- BPA Transmission Line
- PLSS Section
- BPA Transmission Line Structure
- BPA Right-of-Way
- USGS 7.5 Minute Quadrangle

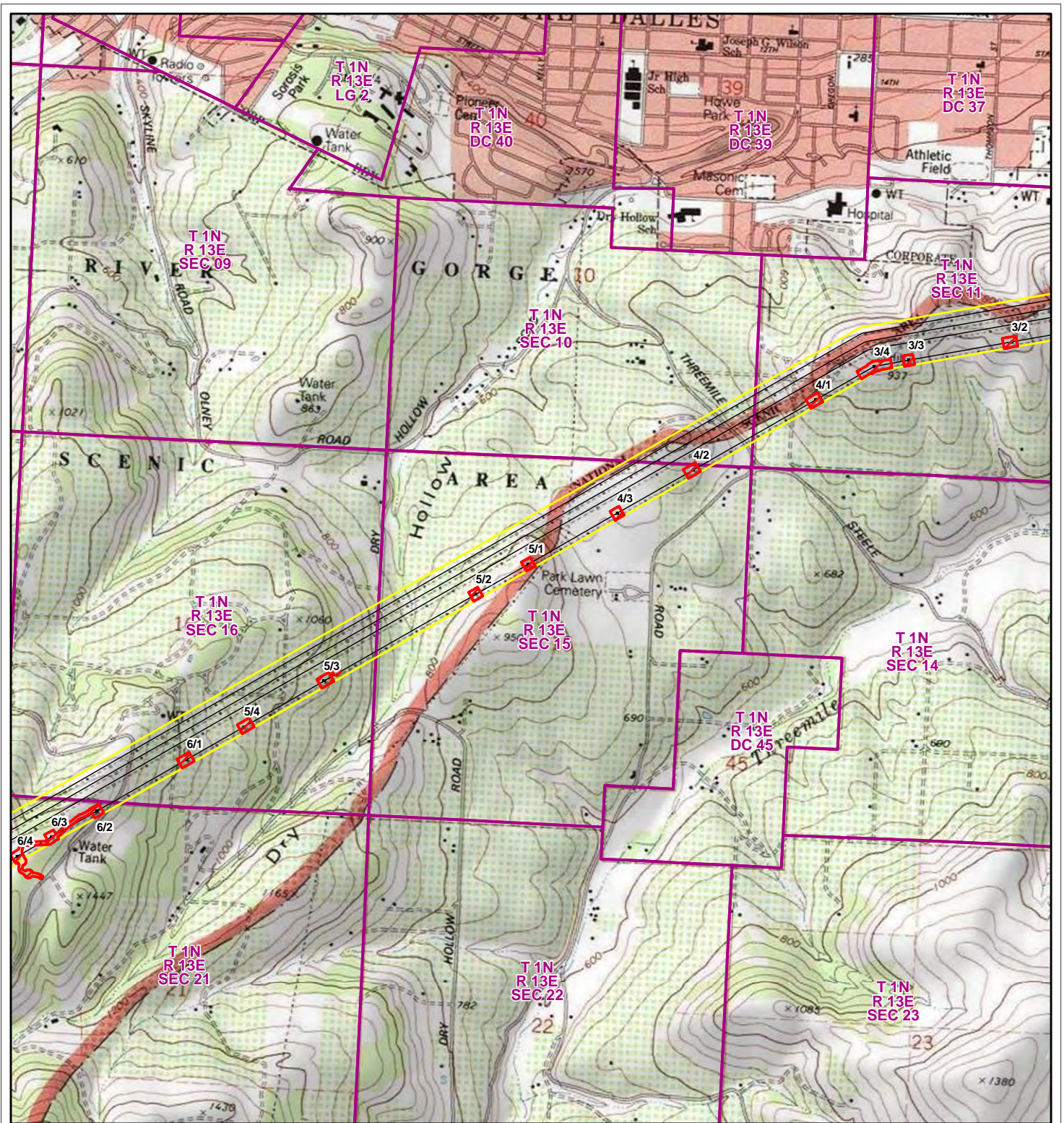
USGS 7.5 Minute Quadrangle
The Dalles South
 USGS 7.5 Minute Quadrangle
Brown Creek
 The Dalles South

County and State
Wasco, OR



6/22/2021





Big Eddy-Ostrander Reconductoring Project Area of Potential Effects

Total Acres: 1139.76

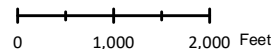
- Area of Potential Effect
- BPA Transmission Line
- PLSS Section
- BPA Transmission Line Structure
- BPA Right-of-Way
- USGS 7.5 Minute Quadrangle

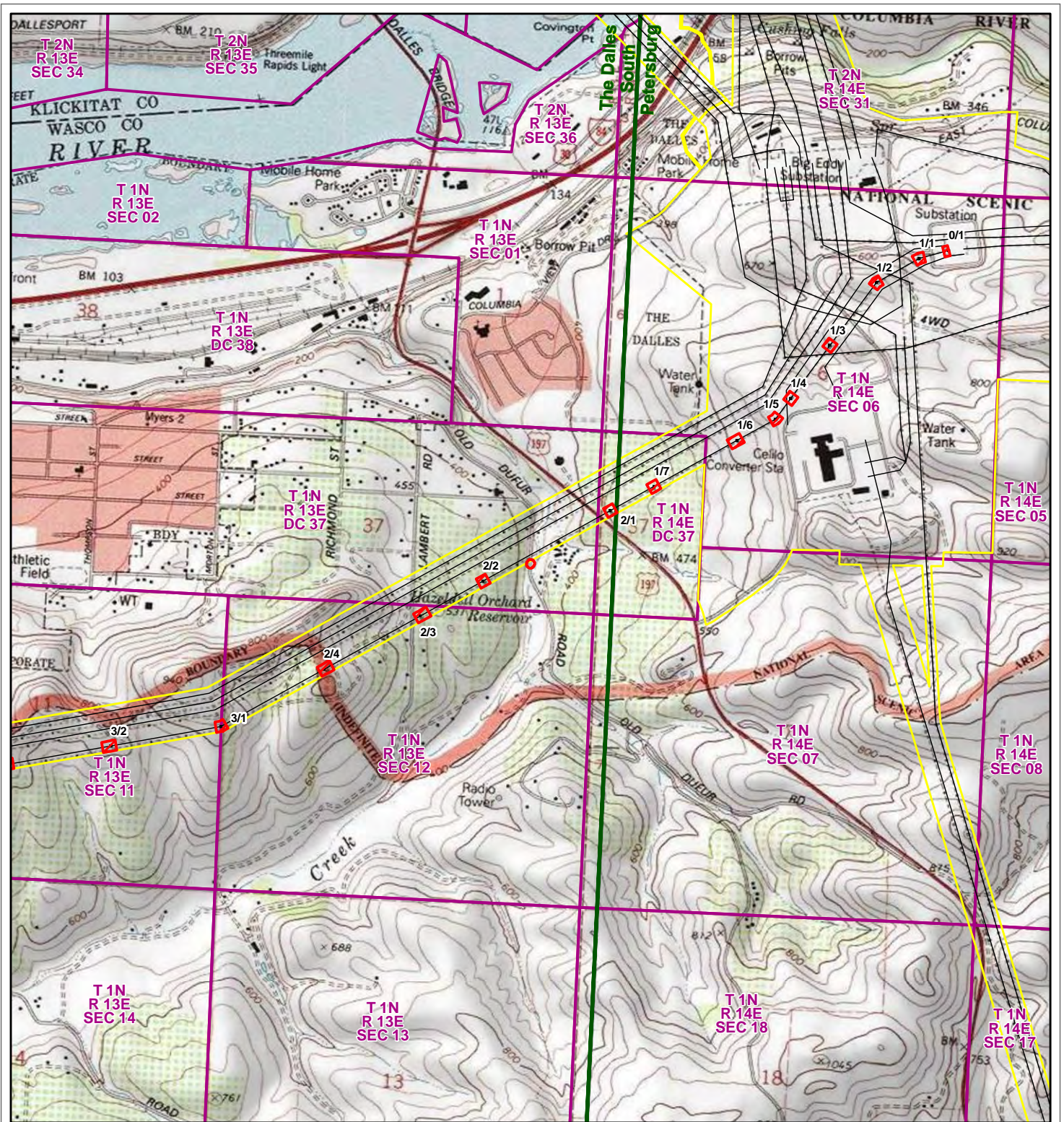
USGS 7.5 Minute Quadrangle
The Dalles South
 USGS 7.5 Minute Quadrangle
The Dalles South

County and State
Wasco, OR



6/22/2021





Big Eddy-Ostrander Reconductoring Project Area of Potential Effects

Total Acres: 1139.76

- Area of Potential Effect
- BPA Transmission Line
- PLSS Section
- BPA Transmission Line Structure
- BPA Right-of-Way
- USGS 7.5 Minute Quadrangle

USGS 7.5 Minute Quadrangle
Petersburg
The Dalles South
 USGS 7.5 Minute Quadrangle
Petersburg
The Dalles South

County and State
Klickitat, WA
Wasco, OR



6/22/2021

