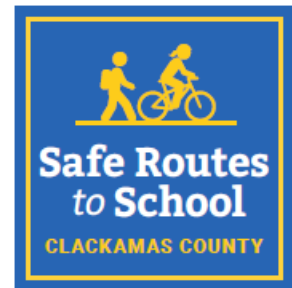

Action Plan for Bilquist Elementary School



Principal: Charles Foote
Enrollment: 455
First bell: 8:30 a.m.
Last bell: 2:45 p.m.

Grades: K-5
Address: 15708 SE Webster Road
Milwaukie, OR 97267

This Action Plan summarizes existing conditions, observations, and recommended improvements and programs for Bilquist Elementary School. A Safe Routes to School (SRTS) walk audit was conducted on November 1, 2016. A summary map on Page 9 illustrates the audit location, area characteristics and locations of infrastructure recommendations.

This Action Plan supports the county-wide SRTS efforts of Clackamas County. For more information on the program, visit: www.clackamas.us/engineering/srts.html.

What is Safe Routes to School (SRTS)?

SRTS is a comprehensive program to **make school communities safer** by combining engineering tools and enforcement with education about safety and activities to enable and encourage students to **walk and bicycle to school**. SRTS programs typically involve partnerships among municipalities, school districts, community members, parent volunteers, and law enforcement.

Although most students in the United States walked or biked to school before the 1980s, the number of students walking or bicycling to school since has sharply declined in both urban and suburban areas.

The benefits of implementing a SRTS plan are far-reaching and include improving safety, encouraging physical activity, and reducing traffic congestion and motor vehicle emissions near schools. Implementing SRTS programs and projects benefit adjacent neighborhoods as well as students and their families.

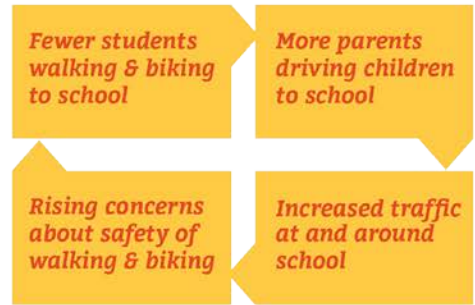
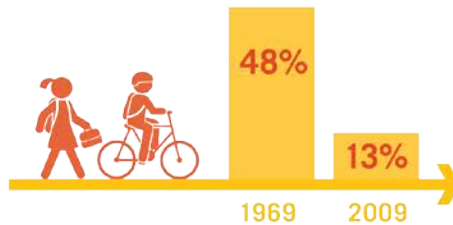
Clackamas County's SRTS Program Handbook outlines activities and local resources that school and community members can use to encourage walking and biking and promote traffic safety in school areas.

See www.clackamas.us/engineering/srts.html for [more information](#).



Why Safe Routes to School for Clackamas County?

Within the span of one generation, the percentage of children walking or bicycling to school has dropped to 13%.



This movement away from active transportation is a self-perpetuating cycle.

SRTS education & encouragement programs can result in a **25%** increase in walking and biking over 5 years.

A comprehensive SRTS program addresses reductions in walking and biking through a multi-pronged approach that uses education, encouragement, engineering and enforcement efforts to develop attitudes, behaviors, and physical infrastructure that improve the walking and biking environment.

SRTS programs provide many benefits for communities!



Healthy Living



Less Traffic



Better Educational Achievement



Increased Social Interactions



Cleaner Air and Water



Cost-Effective

How Do Students Get to School Now?

As part of the Clackamas SRTS program, Bilquist families participated in student hand tallies and parent surveys in spring 2017.

Student Hand Tallies

Hand tallies are a standard way of tracking the different ways (modes) students used to get to school. Students are asked how they traveled to and from school over a 2-3 day period. Students raise their hand when the mode they took is called out, and the teacher or a volunteer records the findings.

Figure 1 shows the results of the spring 2017 hand tallies. Most students bus to and from Bilquist Elementary: approximately 44 percent of students use the school bus to get to school, and 64 percent bus home. Family vehicle is the next most common mode, followed by walking.

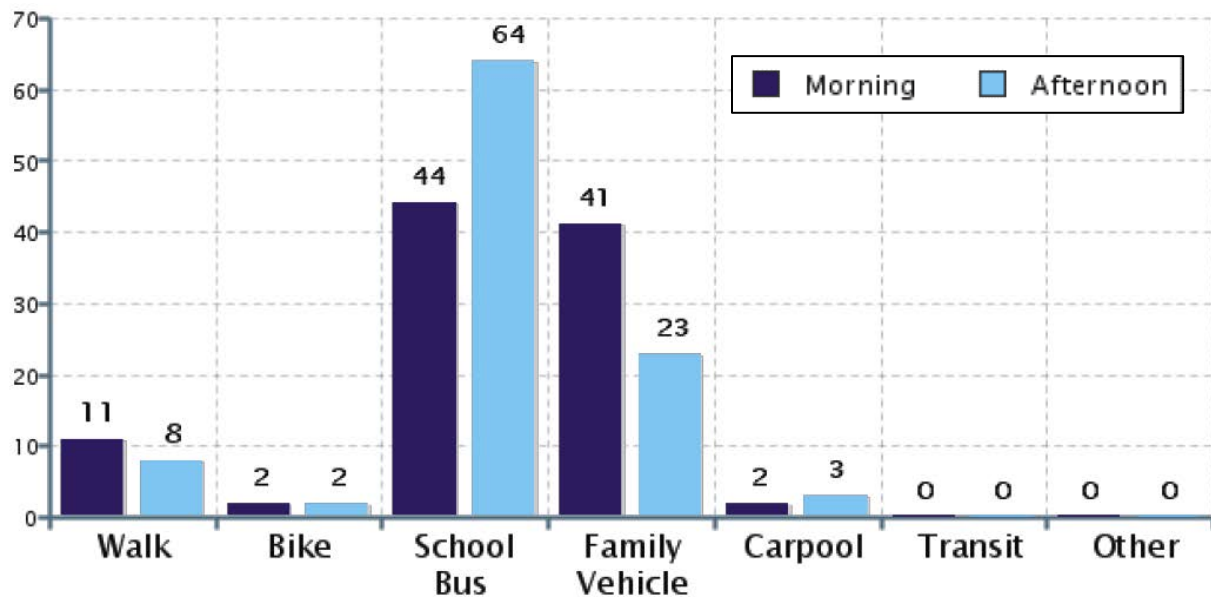


Figure 1. May 2017 Student Hand Tally Results, Morning and Afternoon Mode Split

Tracking the change in mode over time can indicate how successful the SRTS program is at addressing concerns and promoting walking and bicycling. Resources and best practice programs for conducting hand tallies include:

- ◆ The Oregon SRTS website provides [evaluation resources](#).
- ◆ The [National Center for SRTS](#) has forms, data collection guidelines, data center, and automatically-generated reports.

Parent Surveys

Parent surveys ask families about the barriers to walking or biking to/from school, health information, how children travel to and from school, and perception of crime and other social behaviors.

The Clackamas SRTS program collected 34 parent surveys in December 2016, primarily from families with children in 4th or 3rd grades. The majority of respondents live within a mile of the school (10 percent within a quarter-mile, 26 percent a quarter- to a half-mile, and 32 percent a half- to a whole mile from school). Only 10 percent reported living more than 2 miles from the school. Within this group, the majority drive alone in the family vehicle in the morning (50 percent) and take the school bus to get home (56 percent). About 14 percent walked to or from school, and no families reported bicycling.

Figure 2 shows the main barriers for the parents of students who did not walk or bike. Most of the barriers are related to transportation issues: speed of traffic (81 percent), lack of sidewalks or pathways (69 percent), distance (69 percent), amount of traffic along the route (63 percent), and the safety of intersections and crossings (56 percent). These findings indicate that there is potential for promoting walking and biking by addressing traffic safety barriers.

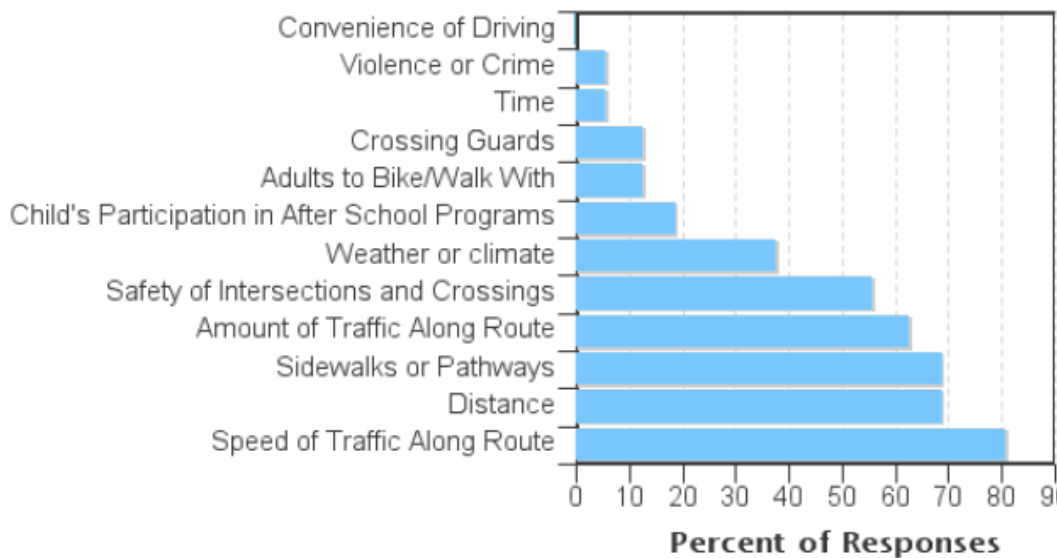


Figure 2. Barriers to Allowing a Child to Walk or Bike to/from School

Resources and best practice programs for conducting parent surveys include:

- ◆ The Oregon SRTS website provides [evaluation resources](#).
- ◆ The [National Center for SRTS](#) has forms, data collection guidelines, and data center.

Walk Audit Summary

Walk Audit Date: November 1, 2016

Meeting Time: 7:30 am

Day of Week: Tuesday

Weather: Partly cloudy

Attendees:

- Nicole Perry, The Street Trust
- Christian Snuffin, Clackamas County
- Lori Mastrantonio, Clackamas County

Existing Conditions

School Layout

Bilquist Elementary is located on SE Webster Road, directly south of SE Clackamas Road. Sports fields to the north and southeast of the school serve the surrounding residential neighborhood.

Students enter and are dismissed through the main door on the south side of the school building.

SITE CIRCULATION

Vehicles: Student drop-off and pick-up primarily occurs in the parking lot at the entry road just south of the school past the Adult Care provider sign. Cars accessing the drop-off zone merge left, then turn toward the gym and follow the drop-off pattern.

School Buses: Buses load and unload students in the Webster Road parking lot, as well as the parking lot directly north of the school. These lots are exclusively for school buses during arrival and dismissal.

Pedestrians: There is a sidewalk on the east side of Webster Road directly in front of Bilquist. This sidewalk continues north of the school for 1.5 blocks. A sidewalk is also available along Clackamas Road on the north side of the road.

Bicyclists: There is a bike lane striped on Webster Road, however, it is very narrow and the striping abruptly ends north of the school. Bike parking is located on the southwest corner of the school building, outside the main entrance.

Walk Audit Observations and Infrastructure Recommendations

Key locations are described below, including issues identified during audit observations and discussions. Project numbering refers to the Improvements Map on page 9. The organization responsible for implementing each recommendation is in parentheses (i.e., Clackamas County or North Clackamas School District).

1. School Parking Lot and Grounds

The circulation on school grounds currently operates well, with existing crossing guard assistance.

RECOMMENDATIONS

- a. Provide additional bike parking near the front entrance of the school (District).
- b. Build a fence with a lockable gate around the bike parking area to provide additional security (District).

2. Webster Road

The main traffic flow occurs on Webster Road, where vehicles turn into the school parking lot. While there are short stretches of sidewalk along Webster Road, it lacks a continuous sidewalk for students walking to school.

A crosswalk at Bixel Way provides a place for pedestrians and bicyclists to cross Webster, although it lacks ADA-compliant curb ramps, which are important for people with bicycles, strollers, and mobility assistive devices.

The intersection of Webster Road and Clackamas Road is a 4-way, signalized intersection with marked crosswalks on all legs. However, corners lack ADA-compliant curb ramps.

A bike lane is striped on Webster Road south of the school, but the bike lane ends directly north of the school, even though bike lane signage is posted.

RECOMMENDATIONS

- a. Construct continuous sidewalks along the east side of Webster Road (County).
- b. Construct curb extensions with curb ramps and add active warning beacon for crosswalk at Bixel Way (County).
- c. Construct curb ramps at all legs of the intersection at Webster Road and Clackamas Road (County).
- d. Stripe Webster Road with bike lane markings (County).

3. Clackamas Road

Adjacent to school grounds on the north side of the school, Clackamas Road has sidewalks on the north side and no parking on either side. It also has bike lanes on both sides, however, cars were observed parking in the bike lanes on the south side of the street in several locations. A crosswalk at Hartnell Street provides a designated place for students to cross, however the crosswalk lacks ADA-compliant curb ramps, and each side lacks a curb and landing.

RECOMMENDATIONS

- a. Construct sidewalks on the south side of Clackamas Road from SE Webster Road to SE Bevington Avenue (County).
- b. Improve crosswalk at Hartnell Street by adding landings and curb ramps (County).



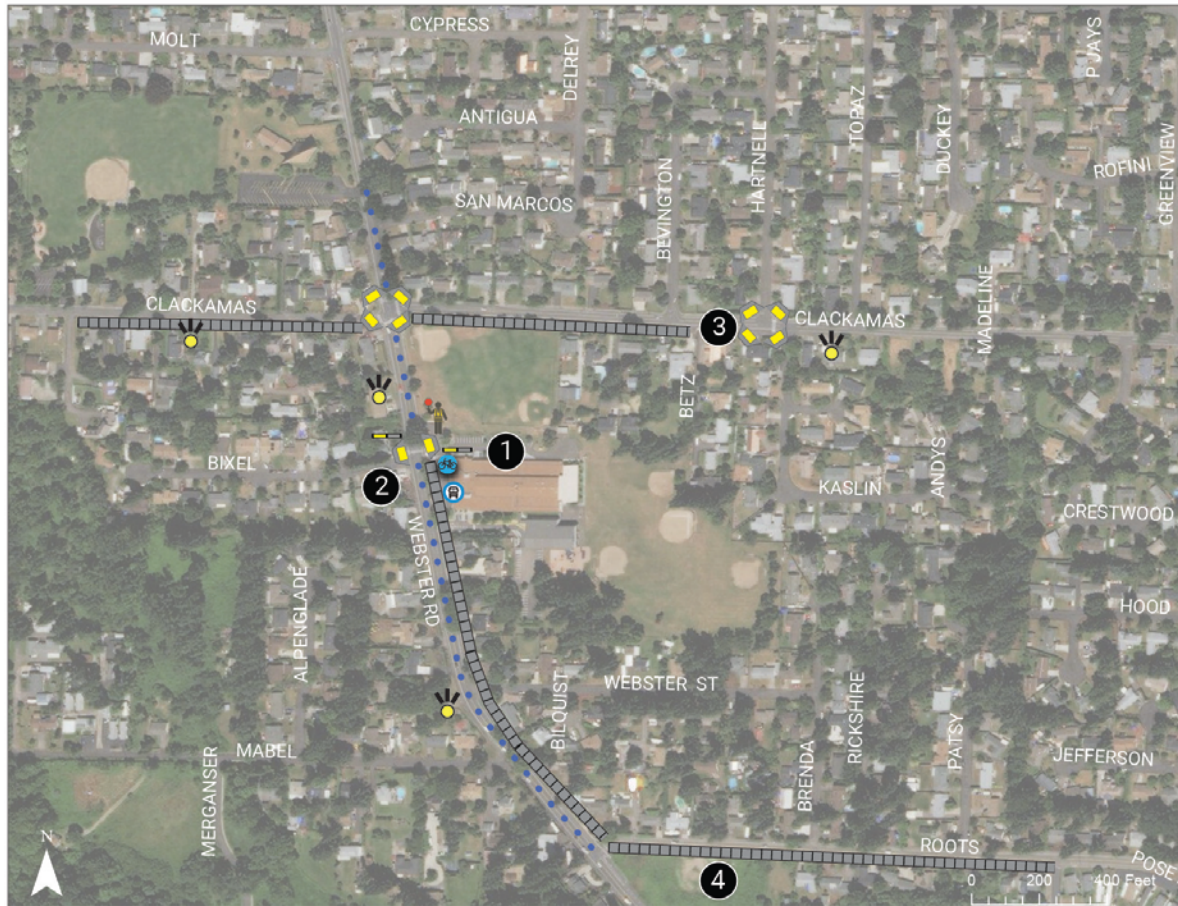
Cost Estimates

Table 1 summarizes engineering recommendations for Bilquist Elementary School, provides planning-level cost estimates, and places the projects in high, medium, or low priority tiers.

Figure 3 on the following page shows the locations of the recommendations. Figure 4 on page 10 shows the Suggested Route Map, which can be shared with parents at the start of the school year along with the walking and biking tips.

Table 1. Bilquist Elementary School Recommended Improvements

RECOMMENDATIONS	LEAD AGENCY	PLANNING – LEVEL COST	PRIORITY
1. School Parking Lot and Grounds			
a. Provide additional bike parking near the front entrance of the school	District	\$	High
b. Build fence with a lockable gate around the bike parking area to provide additional security.	District	\$	Medium
2. Webster Road			
a. Construct continuous sidewalks along the east side of Webster Road.	County	\$\$\$	High
b. Construct curb extensions with curb ramps and add active warning beacon for crosswalk at Bixel Way.	County	\$\$	High
c. Construct curb ramps at all legs of the intersection at Webster Road and Clackamas Road.	County	\$\$	Medium
d. Re-stripe and fill gap in Webster Road bike lane to meet current county standard.	County	\$\$	Medium
e. Install signage at driveway entrance providing direction to student drop-off and pick-up.	District	\$	Low
f. Install permanent radar speed sign on Webster Road	County	\$\$	Medium
g. Install school zone flasher signs north and south of school.	County	\$\$	High
3. Clackamas Road			
a. Construct sidewalks on the south side of Clackamas Road from SE Webster Road to SE Bevington Ave.	County	\$\$\$	High
b. Improve crosswalk at Hartnell Street by adding landings, curb ramps and pedestrian connection to SE Kaslin Way	County	\$\$	Low
c. Install school zone flasher signs east and west of school property	County	\$\$	High
4. Roots Road			
d. Construct pedestrian facility on south side of Roots Road from SE 79 th Ave. to SE Webster Road	County	\$\$\$	Low



Bilquist Elementary

Improvement Recommendations



- 1 School Parking Lot and Grounds:**
 - a. Provide additional bike parking near the front entrance of the school.
 - b. Build fence with a lockable gate around the bike parking area to provide additional security.
- 2 Webster Road:**
 - a. Construct continuous sidewalks (approx. 0.2 miles) along the east side of Webster Road.
 - b. Construct curb extensions with curb ramps for crosswalk and add active warning beacon at Bixel Way.
 - c. Construct curb ramps at all legs of the intersection at Webster Road and Clackamas Road.
 - d. Re-stripe and fill gap in Webster Road bike lane to meet current county standard.
 - e. Install signage at driveway entrance providing direction to student drop-off and pick-up.
 - f. Install permanent radar speed sign on Webster Road
 - g. Install school zone flasher signs north and south of school.
- 3 Clackamas Road:**
 - a. Construct sidewalks on the south side of Clackamas Road.
 - b. Improve crosswalk at Hartnell Street by adding landings, curb ramps and pedestrian connection to SE Kaslin Way.
 - c. Install school zone flasher signs east and west of school property
- 4 Roots Road:**
 - a. Construct pedestrian facility on south side of Roots Road from SE 79th Ave. to SE Webster Road.

Legend

- | | | | | | |
|--|--------------------|--|------------------------------------|--|--------------------------------|
| | Crossing Guard | | Restripe Bike Lane and Fill Gaps | | Proposed Active Warning Beacon |
| | Bike Parking | | Proposed Sidewalk | | |
| | School Bus Loading | | Proposed Flashing School Zone Sign | | |
| | | | ADA-Compliant Curb | | |



Figure 3. Bilquist Elementary School Improvements Map

BILQUIST ELEMENTARY ACTION PLAN



HOW TO USE THIS MAP: This suggested route to school map is intended to encourage adults and students to consider walking or bicycling to school. Adults are responsible for choosing the most appropriate option based on their knowledge of the different routes

Bilquist Elementary

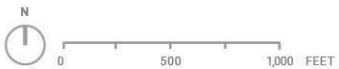
15708 SE Webster Road
Portland, OR 97267

MAP LEGEND

- Enrollment area
- Park or natural area
- School campus
- Suggested route
- Missing or partial sidewalk
- Crosswalk
- Signalized intersection with crosswalks
- Stop Sign
- Crossing Guard

Clackamas County Safe Routes to School (SRTS)

Visit our website to learn more about how you can support SRTS at your school,
www.clackamas.us/engineering/srts.html



Created October 2017

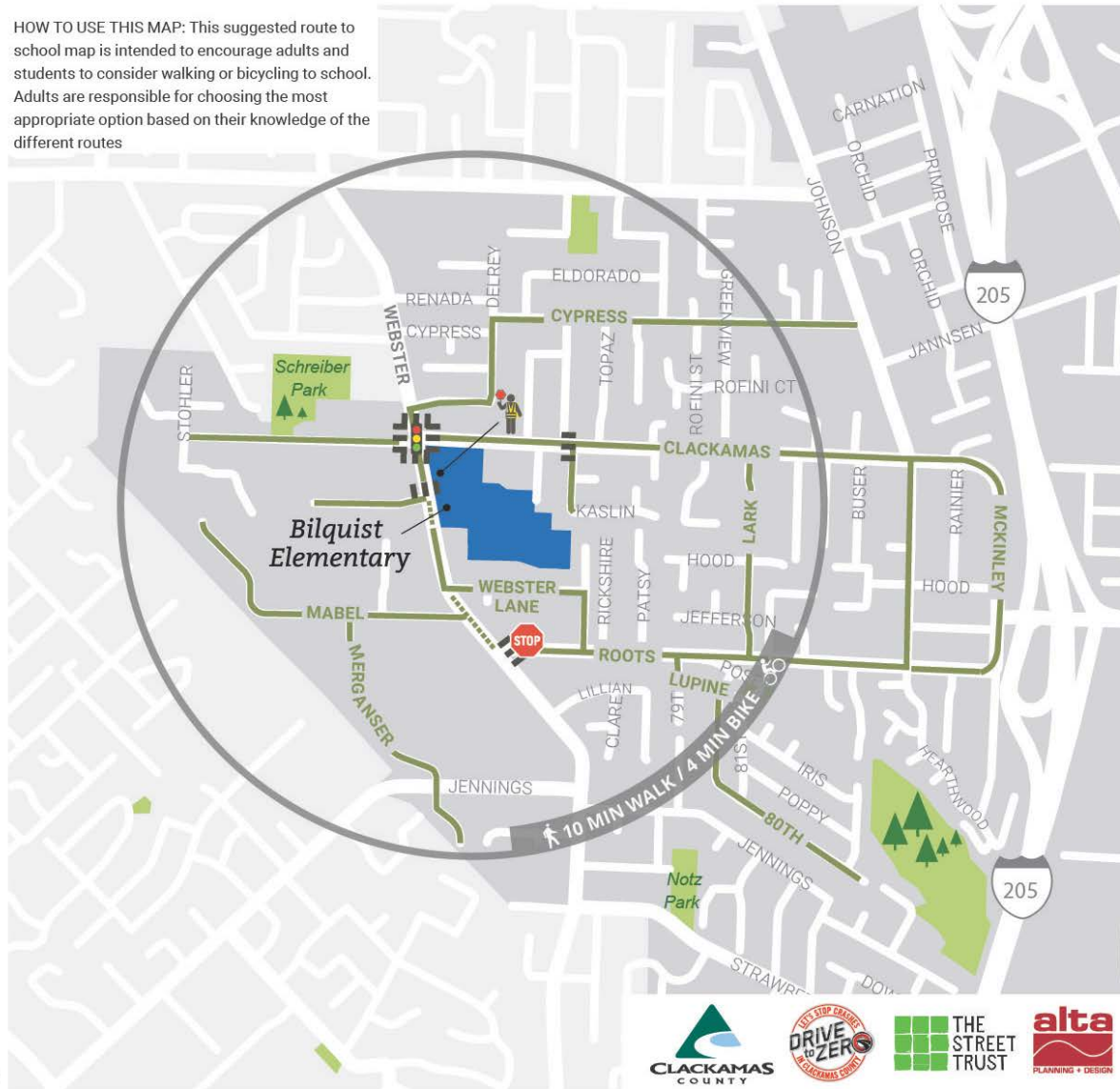


Figure 4. Bilquist Suggested Route Map



Be Safe Walking, Biking, & Driving in School Areas



Safety Tips for Walking

USE THE CROSSWALK

Always cross at corners or at a marked crosswalk. This is where drivers expect to see you.

LOOK BEFORE YOU CROSS

Look left, right, and left again before crossing a street or driveway. Look over your shoulder for turning cars, especially at intersections.

MAKE EYE CONTACT

Don't assume that drivers see you. Make eye contact with drivers before stepping off of the sidewalk.

BE VISIBLE

Wear reflective or bright-colored clothing when it's dark and walk with one or more buddies.

FOLLOW THE RULES

Follow directions from crossing guards and pay attention to traffic signs and signals.



Safety Tips for Driving

RESPECT THE ZONE

Slow down in school zones. The safe speed may be less than 25 MPH. Set a good example by following instructions from crossing guards.

BRAKE FOR PEOPLE WALKING

Stop for people in crosswalks and at unmarked intersections. Look and stop for children who may be crossing mid-block, too.

BE AWARE AND ALERT

Set aside distractions like texting, phone calls, or eating while driving, and keep an eye out for the unexpected.

GO WITH THE FLOW

Follow your school's drop-off and pick-up procedures. Pull to the curb rather than letting children out in the street. Avoid unsafe maneuvers, such as mid-block U-turns or stopping in a crosswalk.

RESPECT THE NEIGHBORHOOD

Park in legal spaces and don't double park or block driveways.



Safety Tips for Biking

BE PREDICTABLE

Obey all stop signs, traffic signals, and guidance from crossing guards. Never ride against traffic.

BE ALERT

Watch out for drivers turning left or right, or coming out of driveways. Avoid car doors opening in front of you and yield to pedestrians.

WEAR YOUR HELMET

Make sure that it fits properly: snug and level on your head, just above your eyebrows.

MAKE EYE CONTACT

Make sure drivers see you, especially at intersections and driveways.

Programmatic Recommendations

Programmatic activities and events complement infrastructure improvements by empowering students and their families to try walking and bicycling, and by making it safer for them to do so.

Bilquist Elementary School currently promotes transportation safety by sending information to parents about student drop-off and pick-up patterns as well as reminders about driving safely. The school promotes walking and bicycling through participation in the annual Walk + Bike to School Day. In 2017, Bilquist received a school champion award, recognizing a 20-year volunteer on the crossing guard staff.

The activities below are recommended for Bilquist Elementary School to improve and promote safe walking and bicycling to and from school and in the community. They can be implemented by school administrators, teachers, parents or even school clubs.

Education Programs

BICYCLE AND PEDESTRIAN SAFETY EDUCATION

Pedestrian and bicycle safety education teaches students basic traffic laws and safety rules.

Resources and best practice programs for elementary school students include:

- ◆ The Street Trust's [SRTS Curriculum](#) includes a flexible in-class and on-bike curriculum and pedestrian safety lesson plans. The City of Portland uses these curricula to teach bicycle and pedestrian safety through the City's SRTS program.
- ◆ Oregon SRTS provides classes and train-the-trainer programs. Oregon-based service providers are listed at: www.oregonsaferoutes.org/bike-ed-service-providers
- ◆ The National Highway Traffic Safety Administration offers a [child pedestrian safety curriculum](#) and [Cycling Skills Clinic Guide](#) to help organizations plan bike safety skills events.
- ◆ The [Girls in Gear](#) curriculum is a girls-specific bicycling program designed to empower adolescent girls by creating self-reliance and building confidence. It is also the first program to creatively integrate STEM – Science, Technology, Engineering and Mathematics – activities, physical exercise and nutrition education by way of the bicycle.



PARENT EDUCATION AND OUTREACH

Parents are the primary decision-makers about how their children get to school. Informing parents about their options for walking and bicycling, as well as communicating the benefits of active transportation, can encourage more families to walk and bike. This can occur through school e-news or announcements, and other informational resources. Suggested route maps can show parents the best walking or biking route to the school, overcoming concerns about barriers.

Resources and best practice programs:

- ◆ Oregon SRTS provides materials, handouts, and theme ideas for [Monthly Walk and Bike](#) events as well as [Back to School](#) messages.
- ◆ The National Center for SRTS has several [tip sheets for parents](#) on safe walking and bicycling behaviors.



Encouragement Programs

WALK + BIKE TO SCHOOL CHALLENGE

The Oregon Walk + Bike to School Challenge celebrates students walking and bicycling to school. International Walk to School Day is held the first Wednesday in October and Bike to School Day takes place the second week in May. Parents can set up a table on the event day to provide refreshments and small rewards for families who participate, as well as maps, lights, and safety information to encourage more students and families to join in the fun.

Even families who live too far from school to walk and bike can participate by driving to a designated central location and walking together from there. Coffee and breakfast can be provided, and students can dress up or hold posters to make a fun, parent-supervised parade to school.

Resources and best practices:

- ◆ Schools in Oregon can order incentives to support and promote [Walk + Bike Challenge Day and Month](#).
- ◆ [Walk Bike to School](#) suggests event ideas and planning resources for encouraging active transportation at schools.
- ◆ The National Center for SRTS maintains a [national database of walk and bike to school day events](#) as well as event ideas and planning resources.

BILQUIST ELEMENTARY ACTION PLAN

STUDENT CLUBS AND YOUTH LEADERSHIP PROGRAMS

Clubs and leadership programs allow older students to form groups to support the causes they care about most. Older elementary school student clubs can host Walk + Bike Challenge events, organize a competition, or work with their peers to promote walking and bicycling. Student clubs can offer excellent ideas, and provide exceptional energy and drive to get things done.



Resources and best practice programs:

- ◆ Marin County SRTS's [Teens Go Green](#) program partners with teens interested in the environment to bring reduced CO2 and healthy lifestyles to their schools.
- ◆ Create a cycling league or club. Leagues can introduce student riders to the sport of mountain biking or road racing, with a focus on skills, fun, fitness, and responsibility.

Enforcement Programs

AAA SCHOOL SAFETY PATROL

Older elementary school student volunteers can sign-up to become a certified AAA School Safety Patroller. With support and leadership from school faculty and parents, student patrollers help fellow students develop a better understanding of pedestrian and vehicular traffic hazards.

Resources and best practice programs:

- ◆ AAA has [School Safety Patrol membership information](#) and descriptions of student, teacher, and parent roles.

