

# Help Clackamas County Plan Better Transit Service

The County is planning transit service to better connect people to jobs, education, healthcare, social services, shopping, recreation and more. Whether you ride transit now or just wish you could, you can help us find:

- Gaps with no transit service
- Places where service exists but needs improvements

Watch for online surveys and community events about the Clackamas County Transit Development Plan (CCTDP for short) in June and August.

To stay informed, visit:  
[clackamas.us/planning/transit](https://clackamas.us/planning/transit).

## Why do we need a new plan?

- To ensure long-term investments in infrastructure that will support the diverse needs of Clackamas County residents, including: a thriving economy, living wage jobs, housing and transportation alternatives, and a healthy environment.
- To get state funding. House Bill 2017—Keep Oregon Moving’s Statewide Transportation Improvement Fund—created new funding for transit. Even areas outside a transit district or service area can get funding if they have a plan that identifies needs and how to meet them.



## What will it accomplish?

This plan could:

- Improve service in rural and suburban locations.
- Make fares and timing easier when riders transfer from one transit carrier to another.
- Bring new options such as shuttles, express services, vanpools, micro-transit, and transportation network companies such as Uber and Lyft.
- Make driving easier on state highways by reducing traffic from single-occupancy vehicles.
- Help support climate recovery.

## Stay Informed

Questions? Contact: **Brett Setterfield**  
Clackamas County Project Manager

503-742-4511 | [bsetterfield@clackamas.us](mailto:bsetterfield@clackamas.us)

Sign up for email updates and learn more about the project: [clackamas.us/planning/transit](https://clackamas.us/planning/transit).

## Where will it apply?

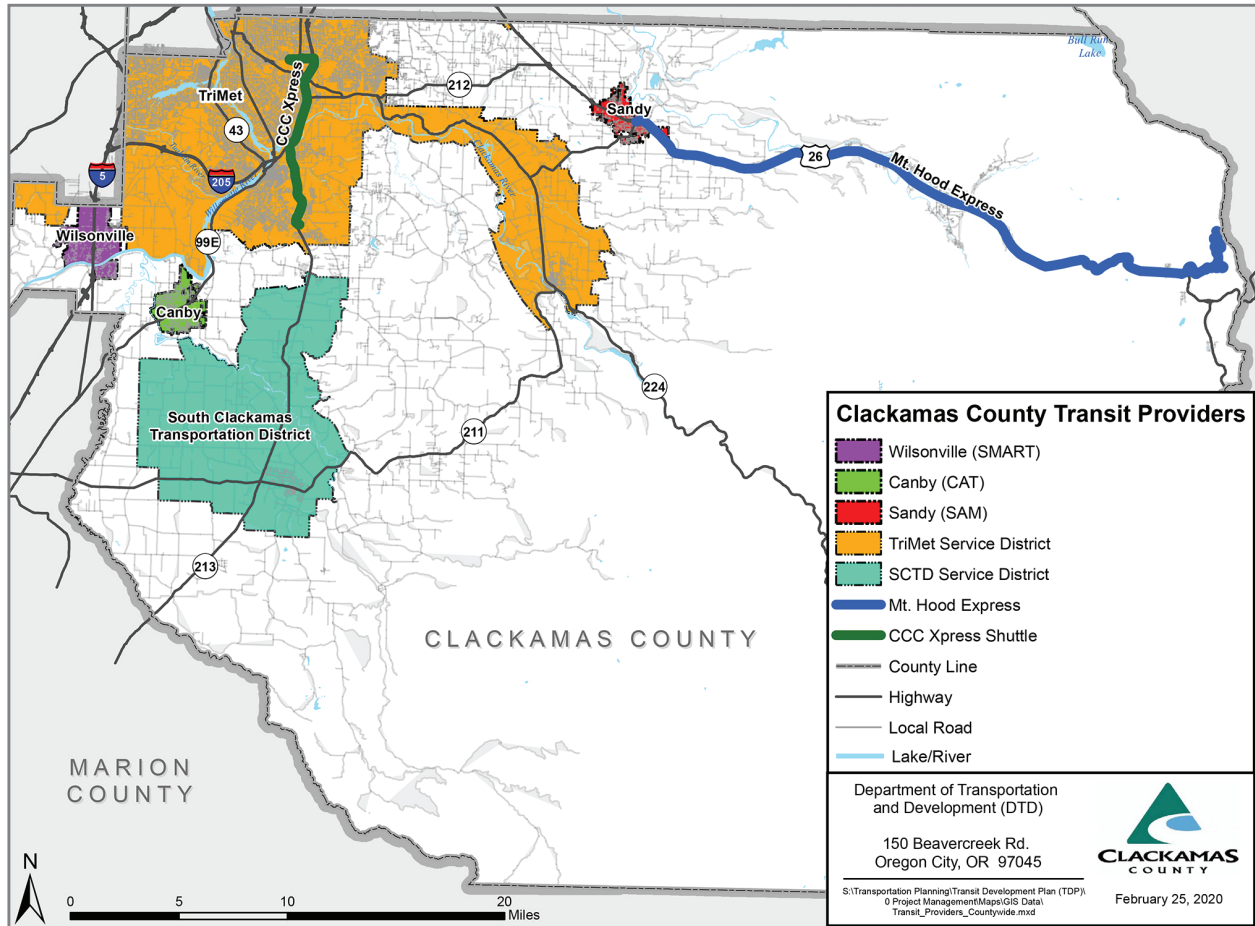
In TriMet's service area, which includes most county cities in the Metro Urban Growth Boundary, *and*:

- Estacada and rural areas along Stafford Road.

Unincorporated areas between those served by these transit agencies:

- South Clackamas Transportation District (SCTD), serving Molalla.

- Sandy Area Metro (SAM).
- Canby Area Transit (CAT).
- South Metro Area Regional Transit (SMART), serving Wilsonville.
- The area served by the County's Mt. Hood Express, along Highway 26 to Government Camp.



## What's the timeline?

