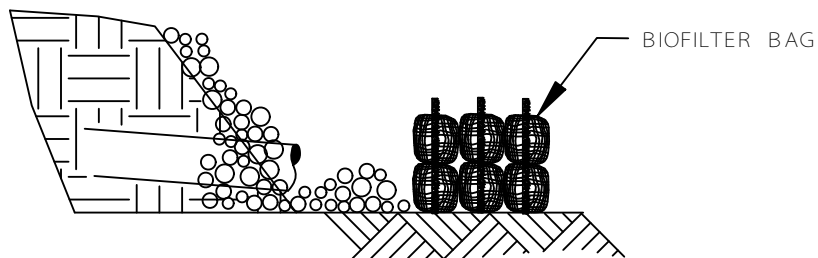


PLAN VIEW

NTS



PROFILE

NOTE:

1. BIO BAGS ONLY REQUIRED WHEN DISCHARGING SEDIMENT LADEN WATER.
2. STAKING OF BAGS REQUIRED WITH EITHER METHOD USING (2) 1"x 2" WOOD STAKES OR APPROVED EQUAL PER BAG.

OUTLET PROTECTION - RIP RAP