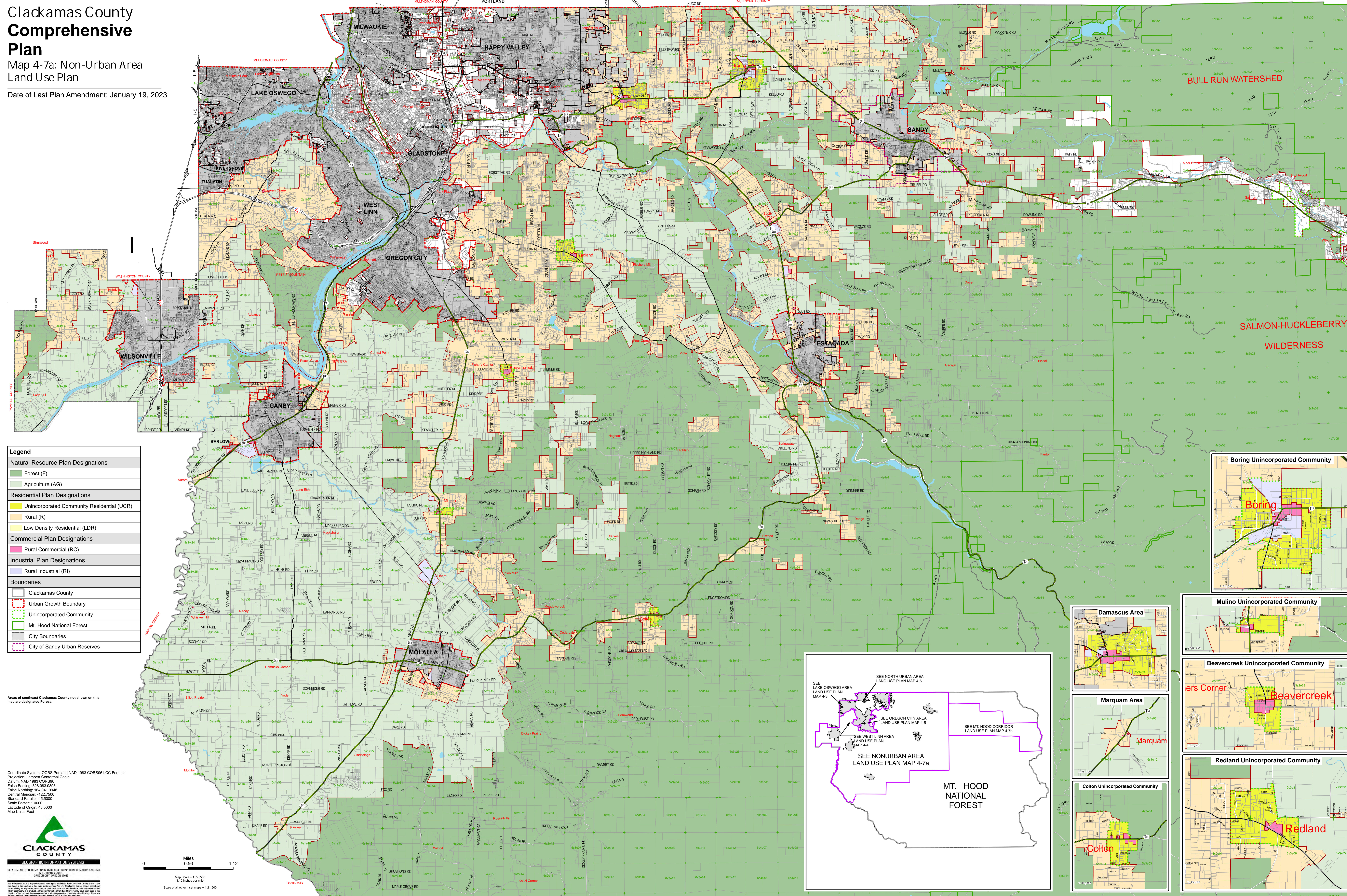


Clackamas County Comprehensive Plan

Map 4-7a: Non-Urban Area Land Use Plan

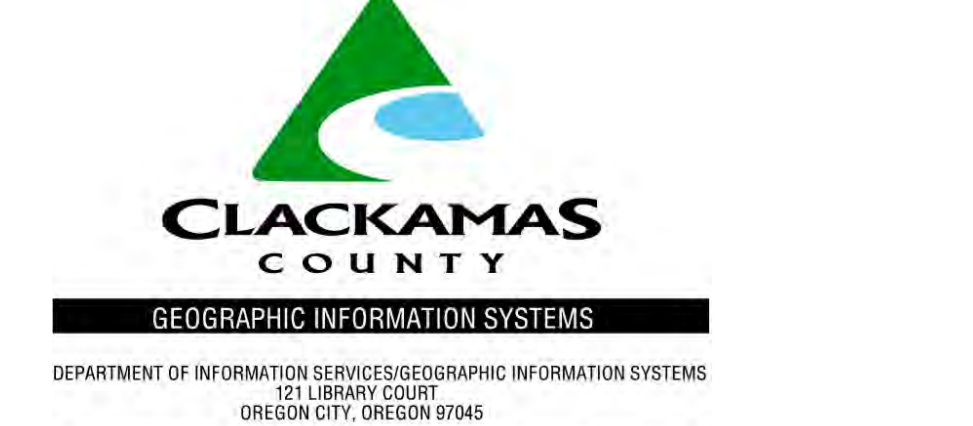
Date of Last Plan Amendment: January 19, 2023



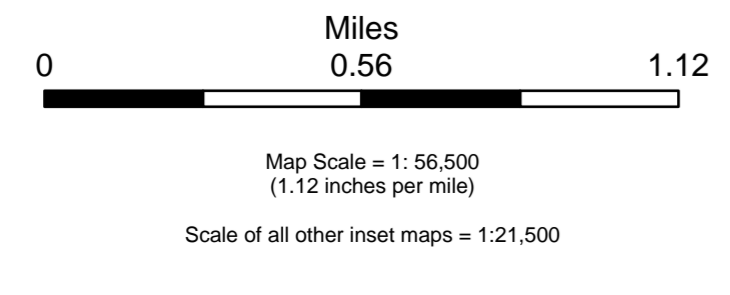
Legend	
Natural Resource Plan Designations	
	Forest (F)
	Agriculture (AG)
Residential Plan Designations	
	Unincorporated Community Residential (UCR)
	Rural (R)
	Low Density Residential (LDR)
Commercial Plan Designations	
	Rural Commercial (RC)
Industrial Plan Designations	
	Rural Industrial (RI)
Boundaries	
	Clackamas County
	Urban Growth Boundary
	Unincorporated Community
	Mt. Hood National Forest
	City Boundaries
	City of Sandy Urban Reserves

Areas of southeast Clackamas County not shown on this map are designated Forest.

Coordinate System: OCRS Portland NAD 1983 CORS96 LCC Feet Intl
 Projection: Lambert Conformal Conic
 Datum: NAD 1983 CORS96
 False Easting: 320,000.0000
 False Northing: 164,041.9948
 Central Meridian: -122.7000
 Standard Parallel: 45.5000
 Scale Factor: 1.0000
 Latitude of Origin: 45.5000
 Map Units: Foot



DEPARTMENT OF INFORMATION SERVICES GEOGRAPHIC INFORMATION SYSTEMS
 3711 SWANSON WAY
 OREGON CITY, OREGON 97066



BULL RUN WATERSHED
 SALMON-HUCKLEBERRY
 WILDERNESS

