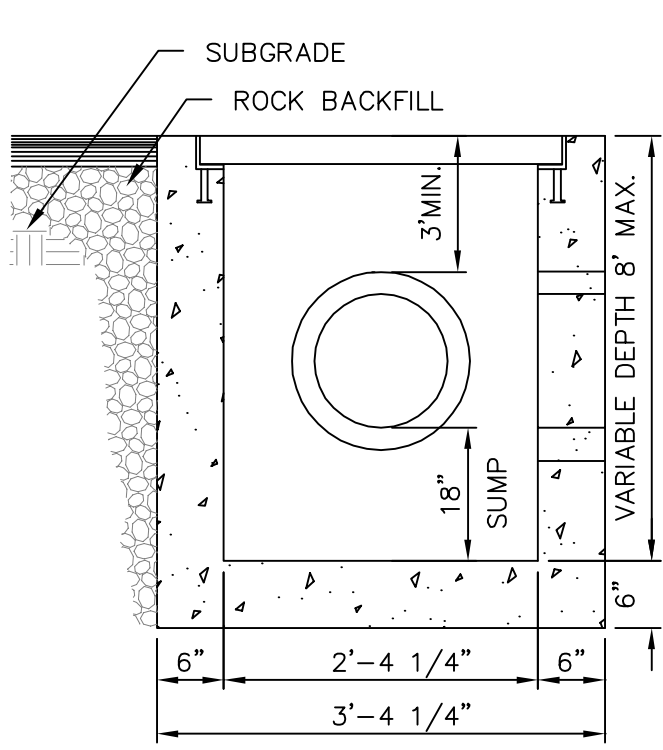
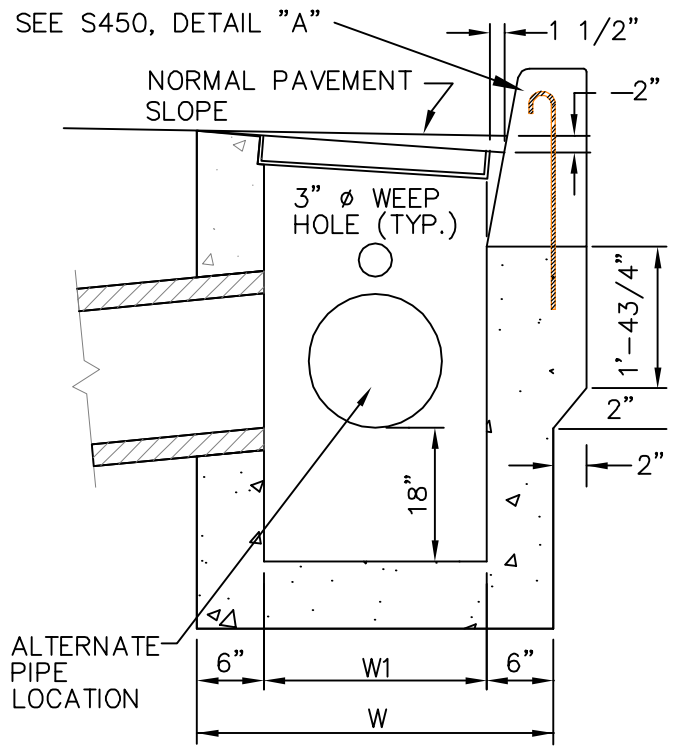


S:\Engineering\Traffic\Projects\Current\Projects\RoadwayStandards\RoadwayStandards\Standard Drawings\Standard Drawings Revised S200.dwg



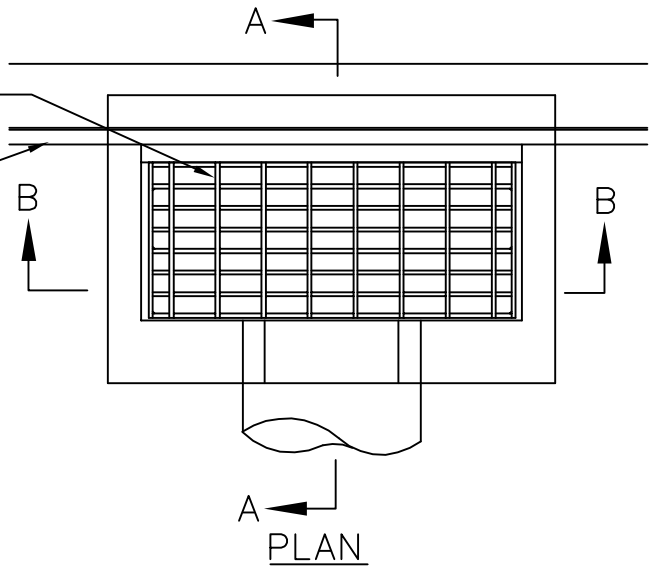
SECTION B-B



SECTION A-A

BICYCLE SAFE GRATE  
SEE DETAIL S400

FACE OF CURB



PLAN

NOTES

1. SPECIFICATIONS FOR CONCRETE AND MISC. MATERIALS USED IN CONSTRUCTION SHALL CONFORM TO THE CURRENT APWA STANDARD SPECIFICATIONS.
2. A MAXIMUM DEVIATION FROM PLAN DIMENSIONS OF ONE INCH, AT THE INLET FLOOR, SHALL BE ALLOWED FOR TAPERING OF FORMS USED IN CONSTRUCTION OF CONCRETE INLETS.
3. REFER TO CURRENT ODOT/APWA OREGON STATE CHAPTER DRAWING 305 AND CLACKAMAS COUNTY WES DETAIL NO. SWM-0001 FOR MORE INFORMATION.
4. THE OUTSIDE DIAMETER OF THE PIPE MATERIAL SHALL NOT EXCEED 28".

CATCH BASIN TYPE	W	W1
GB-2	3'-3 3/8"	2'-3 3/8"

GB-1 NOT ALLOWED

REVISION	DATE	BY

DEPARTMENT OF TRANSPORTATION  
AND DEVELOPMENT  
150 BEAVERCREEK ROAD  
OREGON CITY, OR 97045



APPROVAL DATE: 1/1/10 SCALE: N.T.S.

STANDARD CATCH BASIN

STANDARD DRAWING  
S200