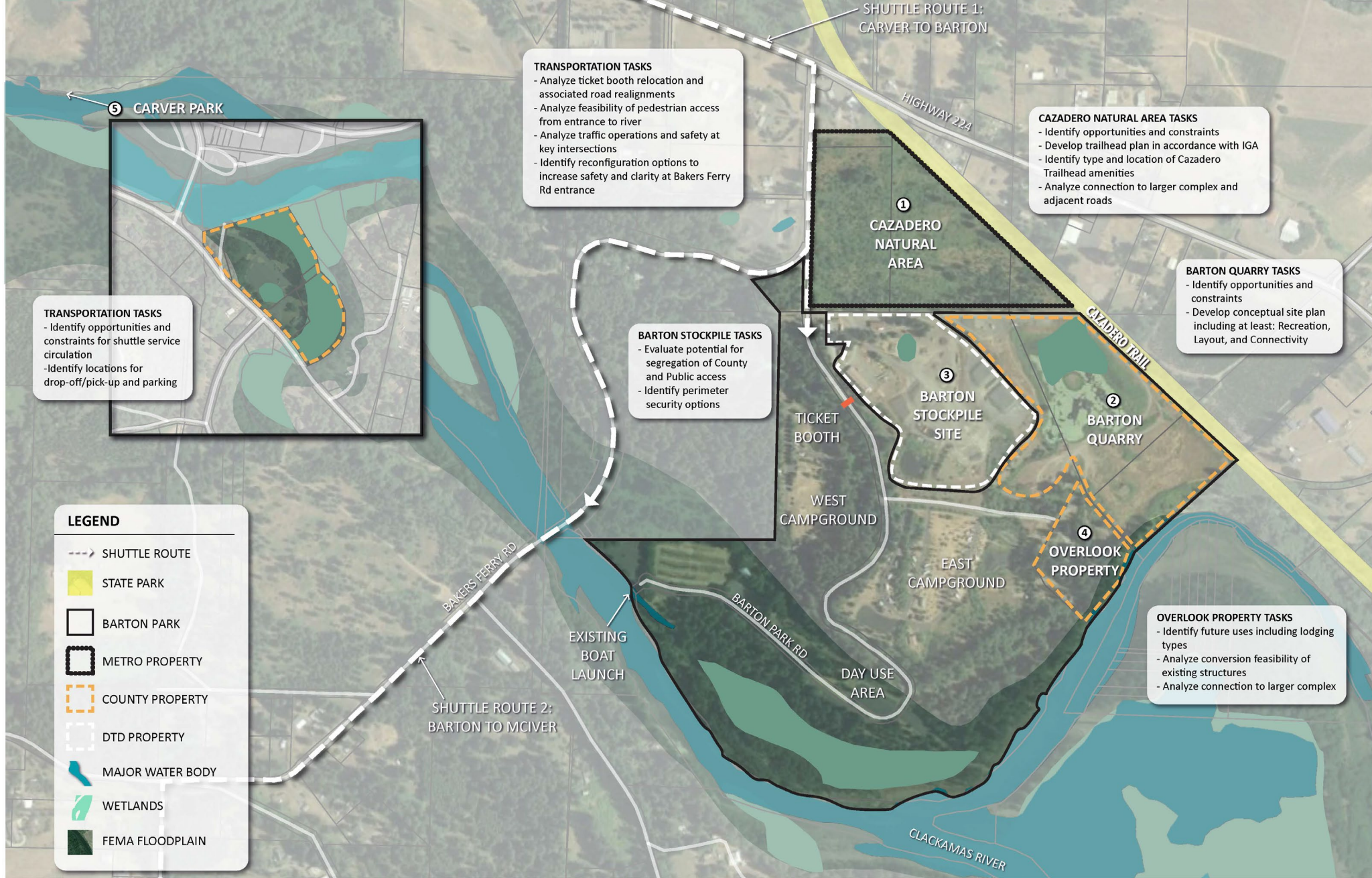


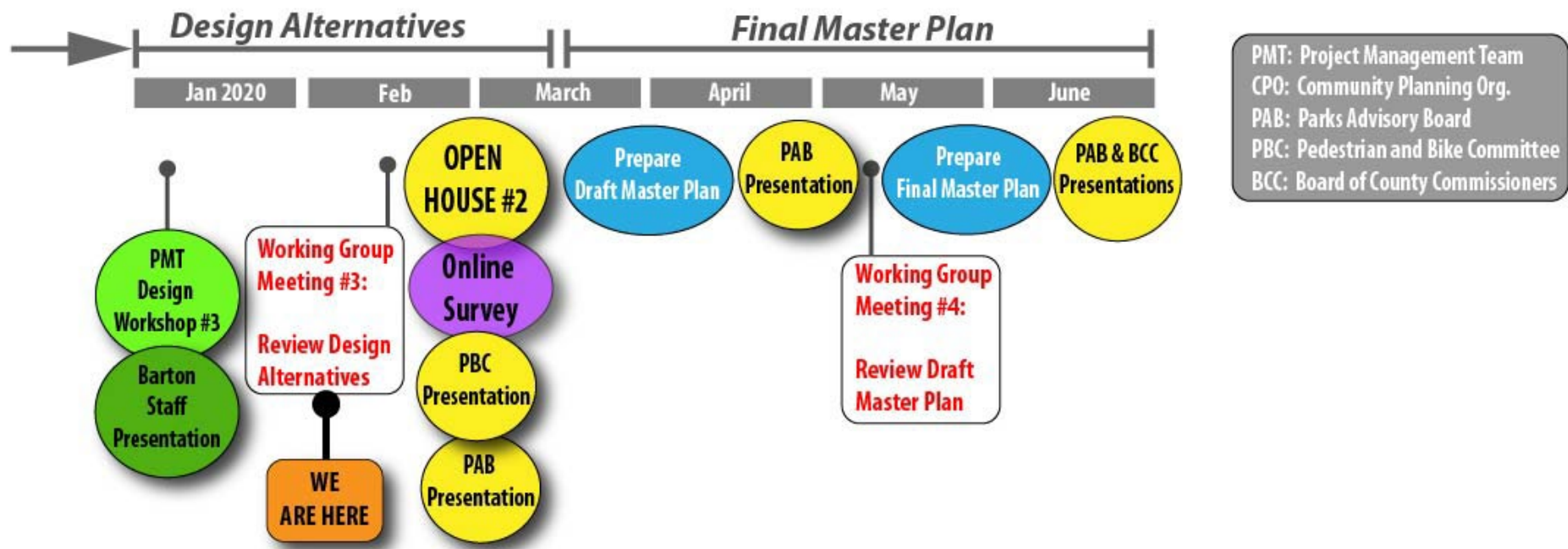
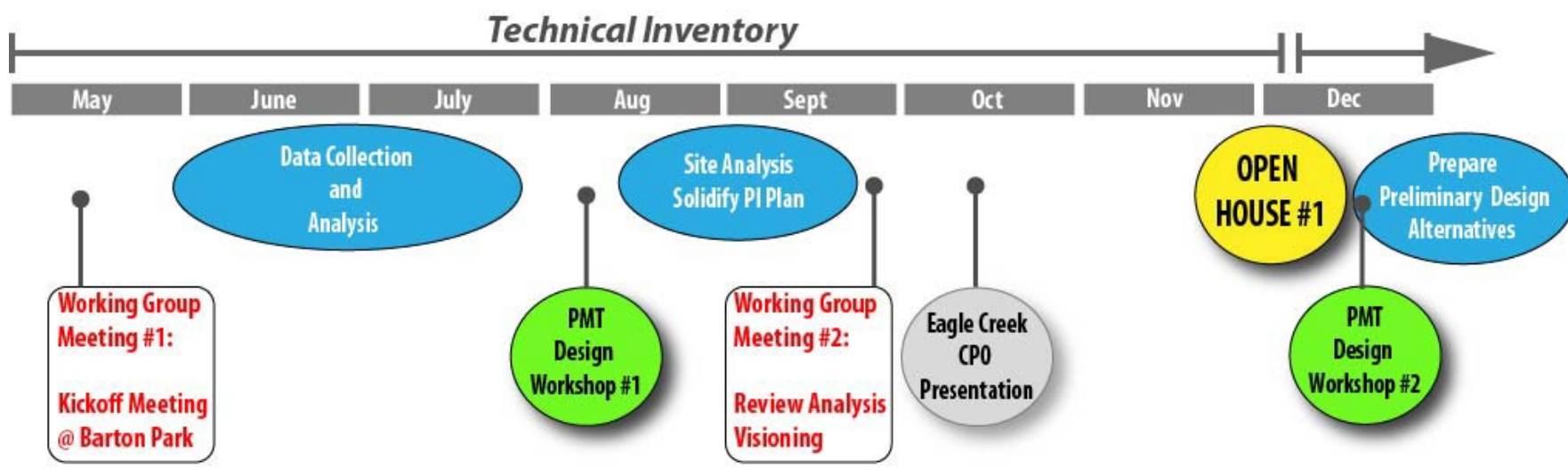
# Working Group Meeting #3

## AGENDA

1. Introductions / Recap
2. Review Design Alternatives
3. Shuttle Analysis
4. Group Exercise
5. What's Next?





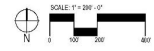


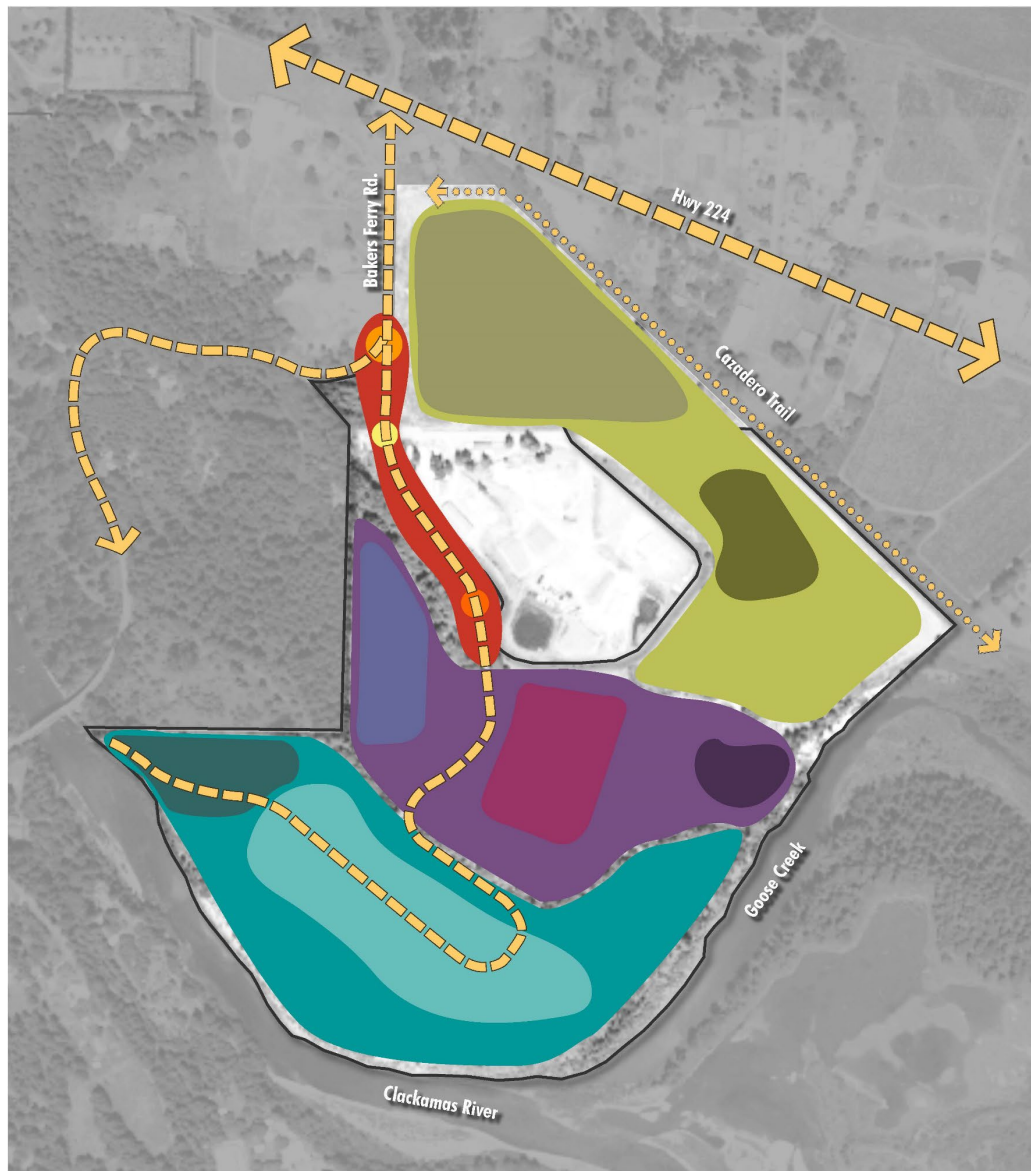


- ### SITE KEY
- 1 Cazadero Natural Area (Metro)
  - 2 Barton Stockpile (DTD)
  - 3 Overlook Property
  - 4 RV Camping (37 spots)
  - 5 RV/Tent Camping (64 spots)
  - 6 Barton Quarry Site
  - 7 Day Use Area

- ### PROGRAM KEY
- Restrooms
  - Reservable Picnic Shelter
  - Reservable Picnic Table
  - Parking (400 stalls)
  - Overflow Parking (400 stalls)
  - RV Dump Station
  - Boat Ramp
  - Primitive Camping (7 spots)
  - Play Area
  - Camp Host
  - Ticket Booth
  - Caretaker
  - Ranger Station
  - Event Pavilion
  - Volleyball
  - Ball Field
  - Cabin
  - Group Camping

- ### LEGEND
- Floodplain
  - Ponds
  - Property Boundary
  - County Road
  - Park Road
  - Camp Road
  - Walking Trail
  - Stream
  - Seasonal Side Channel
  - 10' Contours

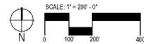




**LEGEND**

- Primary Vehicular Circulation
- Bicycle, Pedestrian and Equestrian Circulation
- Entry Zone**
  - Entry Intersection
  - Ranger Station
  - Ticket Booth
- Overnight Zone**
  - Tent/RV Campground
  - RV Campground
  - Overlook Property
- Day Use Zone**
  - Picnic and Parking
  - River Access
- Upper Plateau Zone**
  - Cazadero Natural Area
  - Quarry Pond





**LEGEND**

- Vehicular Circulation
- Barton Stockpile Vehicular Circulation (Not Public)
- Bicycle, Pedestrian, Equestrian Circulation
- Pedestrian Circulation
- High Impact Decision Making Moment
- Medium Impact Decision Making Moment
- Low Impact Decision Making Moment



**LEGEND**

- Project Boundary
- Existing Park Road
- Cazadero Multi-use Trail
- 10' Contours
- Existing Fence
- DTD Property
- Ponds
- Floodplain
- Wetlands
- Riparian Forest
- Forest - Deciduous, Coniferous, Mixed
- Restored Mixed Forest (Metro)
- Revegetation/Reforestation Opportunity
- Pond Bank Restoration Opportunity
- River/Stream Bank Restoration Opportunity
- Seasonal Streams
- Potential Habitat Connectivity



# Camping

112 Campsites  
103 w/ water and elect.  
7 primitive, 1 group site  
1 bunkhouse



# Picnicking

3 Shelters  
4 Uncovered  
1 Pavillion



# River Access

Boating, Fishing  
Rafting, Wildlife  
Viewing



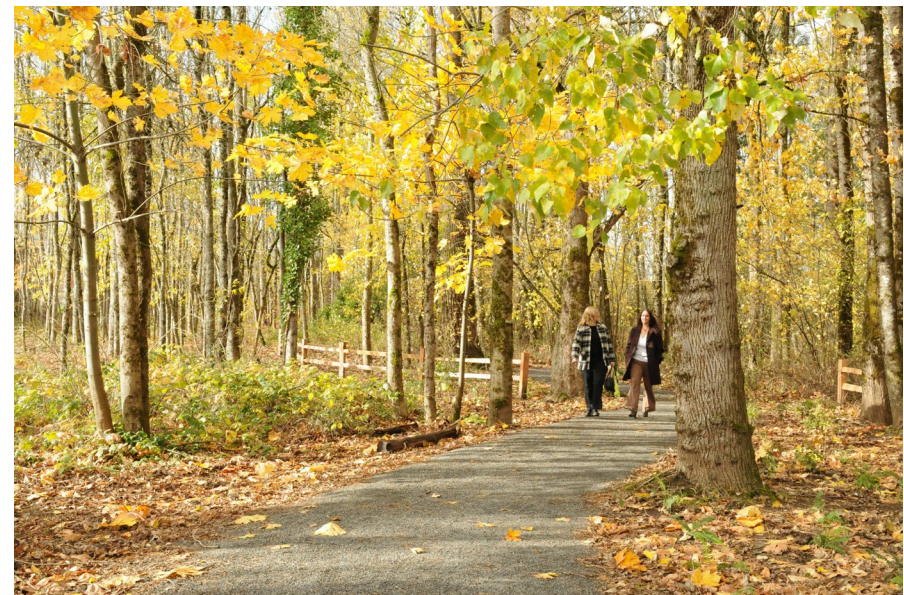
# Hiking Trails

1.5 Miles









## **1. Traffic and Safety**

1. Removes Pedestrians from roads
2. Reduces Neighborhood Impacts
3. Improves Internal Vehicular Circulation
4. Minimizes Impact to DTD Stockpile Site

## **2. User Experience**

1. Improves User Experience
2. Addresses Carrying Capacity Issues
3. Provides Diverse Recreational Options
4. Embraces the Unique Features of the Site

## **3. Ecology / Environment**

1. Enhances Wildlife Connectivity
2. Considers Larger Scale Connectivity
3. Appropriate Locations and Scales of Development
4. Use of Green Infrastructure to Mitigate Impacts

## **4. Funding and Operations**

1. Generates Revenue with a Balance of Uses
2. Identifies Feasible Projects
3. Streamlines Park Operations
4. Considers Potential Infrastructure Needs
5. Accomplishes IGA Between Metro and County

# Design Alternatives

- Traffic/Safety
- User Experience
- Ecology/Environment
- Funding and Operations





### LEGEND

E = Existing; P = Proposed

- Day Use Area**
- Overnight Area**
- Park Storage Area**
- Pond**
- Parking Lot**
- Overflow Parking**
- Property Boundary**
- Cazadero Trail**
- Primary Road**
- Secondary Road**
- DTD and Park Staff Road**
- Primary Pedestrian Trail**
- Secondary Pedestrian Trail**
- Paved Multi-use Path**
- 10' Contours**
- Roundabout**
- Expanded Ticket Booth**
- Shuttle Dropoff (Pickup)**
- Cazadero Trailhead**
- Viewing, Interpretive, or River Access Area**
- Existing Building**
- Proposed Building**

### PROGRAM KEY

- 1 Hiker-Biker (H-B) Camping**  
Restroom; Picnic Shelter and Tables; Water; Fix-it Station; Fire Rings; Solar Charging Station; Bike Racks
- 2 Cabins/Yurts**  
Cabin and/or Yurt Structures; Water; Electricity; Parking; Bike Racks
- 3 Primitive Camping**  
Restroom; Picnic Shelter and Tables; Water; Electricity; Fire Rings
- 4 Group Camping**  
Restroom; Water; Electricity; Parking; Fire Rings; Picnic Tables
- 5 Pond**  
Restoration and Invasive Species Management; Dock; Viewing Areas with Seating; Picnic Tables
- 6 Cazadero Trailhead**  
Restroom; Water; Parking; Trailhead Kiosk; Bike Racks; Fix-it Station
- 7 Lower Terrace Play Area**  
Adventure/Nature/Water Play; Bike Racks

### CIRCULATION KEY

- A Park Entrance**  
Realignment with roundabout or additional turning lane
- B Ticket Booth**  
Relocate existing booth; Add additional lane and ticket machine
- C Turn Around Area**  
Close existing Dump Station; Adjust turning radius
- D Dump Station**  
New Dump Station; Size for large RV/trailer use





**LEGEND**

- Parking Lot
- Overflow Parking
- Property Boundary
- Cazadero Trail
- Primary Road
- Secondary Road
- DTD and Park Staff Road
- Primary Pedestrian Trail
- Secondary Pedestrian Trail
- Paved Multi-use Path
- 10' Contours
- Roundabout
- Expanded Ticket Booth
- Shuttle Dropoff (Pickup)
- Cazadero Trailhead





### LEGEND

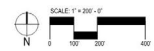
- Day Use Area
- Overnight Area  
Hiker-Biker (H-B)
- Park Storage Area
- Pond
- Property Boundary
- Cazadero Trail
- Primary Pedestrian Trail
- Secondary Pedestrian Trail
- Paved Multi-use Path
- 10' Contours
- ☀ Shuttle Dropoff (Pickup)
- ✿ Cazadero Trailhead
- Viewing, Interpretive, or River Access Area
- ◇ Existing Building
- Proposed Building

### DAY USE

	EXISTING		PROPOSED		TOTAL	
	Size (acres)	Qty.	Size (acres)	Qty.	Size (acres)	Qty.
Parking (Perm.)		400	1.4	140	540	540
Parking (Temp.)		400			400	400
Picnic Shelters		7			7	7
Picnic Areas		4			4	4
Lodge/Pavilions		1		1	2	2

### OVERNIGHT USE

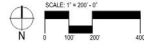
	EXISTING		PROPOSED		TOTAL	
	Size (acres)	Qty.	Size (acres)	Qty.	Size (acres)	Qty.
RV/Tents	6.8	64			64	64
RV Only	8.1	37			37	37
Primitive	0.2	7	1.8	7	14	14
Group	0.2	1	2.8	11	12	12
Yurt or Cabins	0.1	1	3.2	13	13	13
Hiker/Biker			1.4	12	12	12
					110	43
						152





**LEGEND**

- Higher Quality Habitat
- Lower Quality Habitat
- Ponds
- Seasonal Side Channel
- Property Boundary
- Cazadero Trail







### LEGEND

E = Existing; P = Proposed

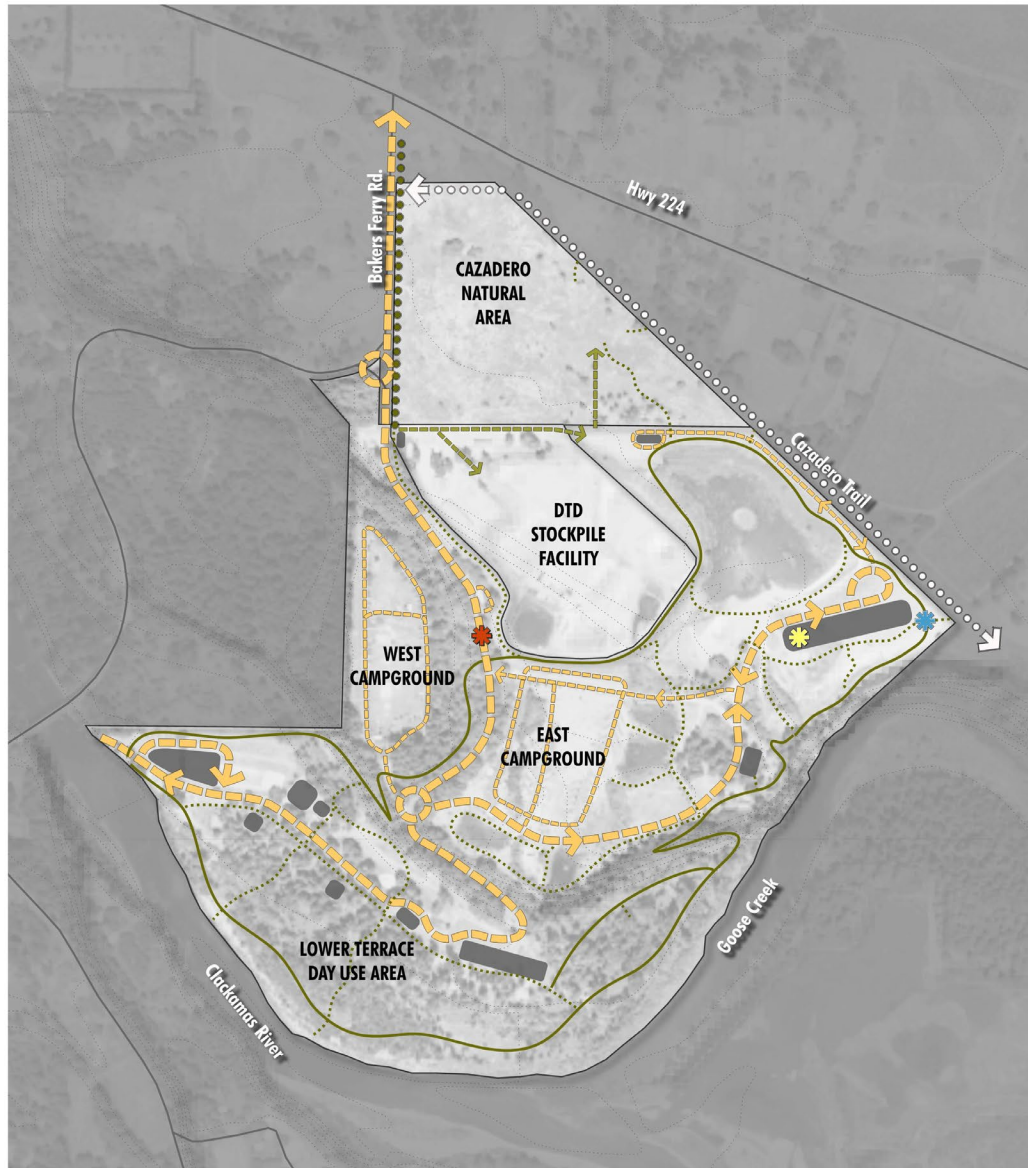
- Day Use Area**
- Overnight Area**
- Park Storage Area**
- Fishing Pond**
- Parking Lot**
- Property Boundary**
- Cazadero Trail**
- Primary Road**
- Secondary Road**
- DTD and Park Staff Road**
- Primary Pedestrian Trail**
- Secondary Pedestrian Trail**
- Paved Multi-use Path**
- 10' Contours**
- Roundabout**
- Expanded Ticket Booth**
- Shuttle Dropoff (Pickup)**
- Cazadero Trailhead**
- Viewing, Interpretive, or River Access Area**
- Existing Building**
- Proposed Building**

### PROGRAM KEY

- 1 Hiker-Biker (H-B) and Primitive Camping**  
Restroom; Picnic Shelter and Tables; Water; Fix-it Station; Fire Rings; Bike Racks
- 2 Equestrian Camping**  
Restroom; Picnic Shelter and Tables; Water; Electricity; RV Hookups; Horse Trailer Parking; Horse Corral; Hitching Post; Mounting Block; Fire Rings
- 3 Group Camping**  
Restroom; Water; Electricity; Parking; Fire Rings; Picnic Tables
- 4 Cabins/Yurts**  
Cabin/Yurt Structures; Restroom; Water; Electricity; Parking; Bike Racks
- 5 Pond**  
Restoration and Invasive Species Management; Dock; Viewing Area with Seating; Picnic Tables
- 6 Quarry Day Use and Cazadero Trailhead**  
Restroom; Water; Parking  
Day Use: Picnic Shelter and Tables; Pedestrian/Equestrian Trails; Viewing Areas with Seating; Open Lawn  
Cazadero Trailhead: Trailhead Kiosk; Fix-it Station; Bike Racks
- 7 Overlook Day Use Area**  
Nature/Education Center; Parking; Viewing Area with Seating; Bike Racks
- 8 Nature Walk Area**  
Boardwalk; Viewing Areas with Seating
- 9 Lower Terrace Play Area**  
Adventure/Nature/Water Play; Bike Racks
- 10 Picnic Area**  
Picnic Shelter and Tables; Water; Electricity

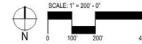
### CIRCULATION KEY

- A Park Entrance**  
Realignment with roundabout or additional turning lane
- B Turn Around Area**  
Close existing Dump Station; Adjust turning radius
- C Ticket Booth**  
Relocate existing booth; Add additional lane and ticket machine
- D Dump Station**  
New Dump Station; Size for large RV/trailer use



**LEGEND**

- Parking Lot
- Property Boundary
- Cazadero Trail
- Primary Road
- Secondary Road
- DTD and Park Staff Road
- Primary Pedestrian Trail
- Secondary Pedestrian Trail
- Paved Multi-use Path
- 10' Contours
- Roundabout
- Expanded Ticket Booth
- Shuttle Dropoff (Pickup)
- Cazadero Trailhead





### LEGEND

- Day Use Area
- Overnight Area  
Hiker-Biker (H-B)
- Park Storage Area
- Pond
- Property Boundary
- Cazadero Trail
- Primary Pedestrian Trail
- Secondary Pedestrian Trail
- Paved Multi-use Path
- 10' Contours
- Shuttle Dropoff (Pickup)
- Cazadero Trailhead
- Viewing, Interpretive, or River Access Area
- ◊ Existing Building
- Proposed Building



#### DAY USE

	EXISTING		PROPOSED		TOTAL	
	Size (acres)	Qty.	Size (acres)	Qty.	Size (acres)	Qty.
Parking (Perm.)		400	1.4	140		540
Parking (Temp.)		400		0		0
Picnic Shelters		7		3		10
Picnic Areas		4		4		8
Lodge/Pavilions		1				2
Nature Center				1		1

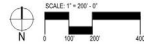
#### OVERNIGHT USE

	EXISTING		PROPOSED		TOTAL	
	Size (acres)	Qty.	Size (acres)	Qty.	Size (acres)	Qty.
RV/Tents	6.8	64				64
RV Only	8.1	37				37
Primitive	0.2	7	1.4	6		6
Group	0.2	1	1.2	5		5
Yurt or Cabins	0.1	1	0.75	6		6
Equestrian			1.4	6		6
Hiker/Biker			1.4	12		12
					110	136



**LEGEND**

- Higher Quality Habitat
- Lower Quality Habitat
- Ponds
- Seasonal Side Channel
- Property Boundary
- Cazadero Trail

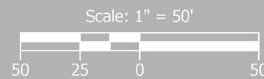








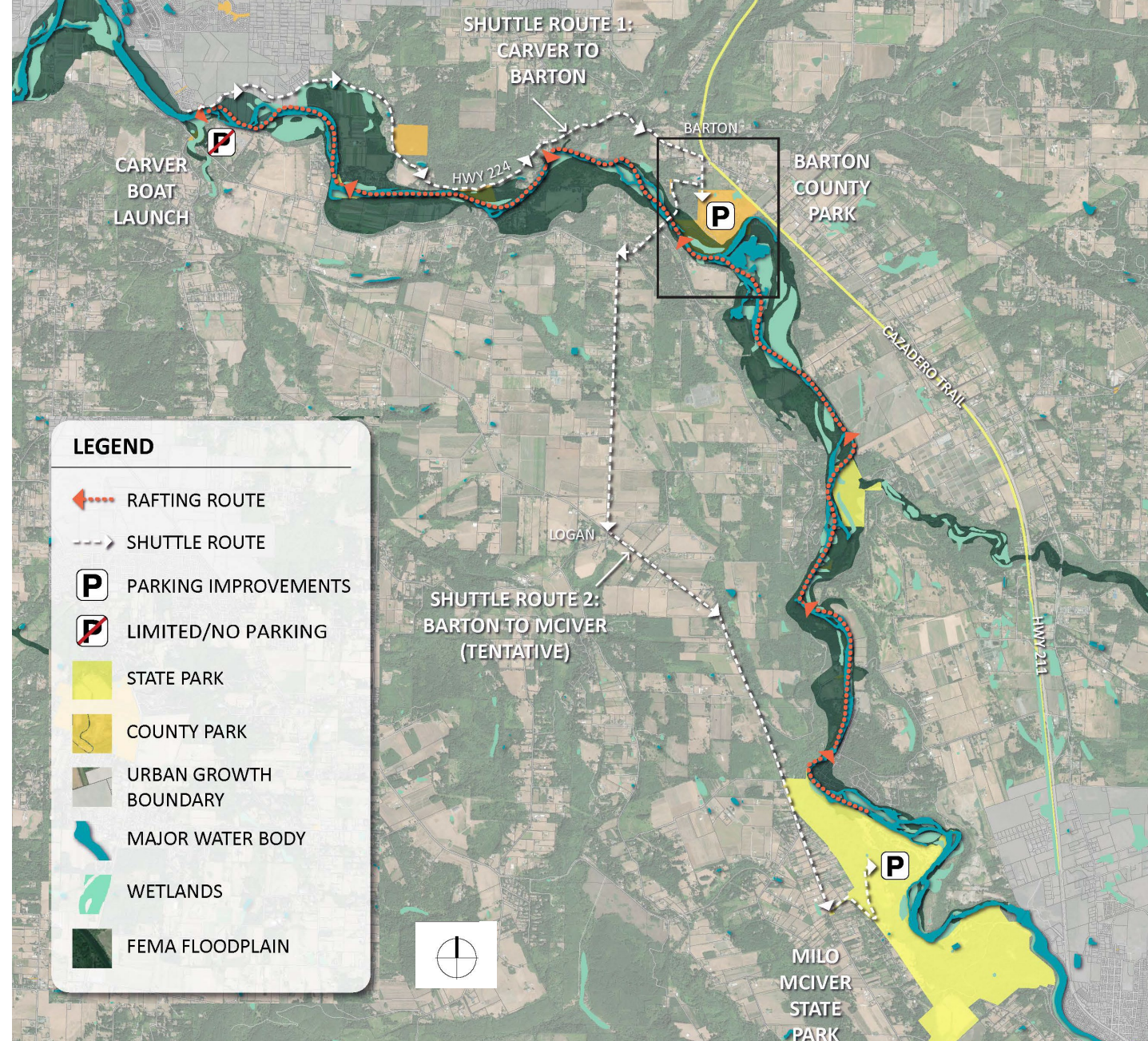
**KITTELSON & ASSOCIATES**  
PHONE: (503) 228-5230 CONTACT:



Barton Park Master Plan

# Goal of Shuttle Analysis:

- Reduce negative impacts on Barton and Carver Parks
- Understand options for implementing a floater-shuttle

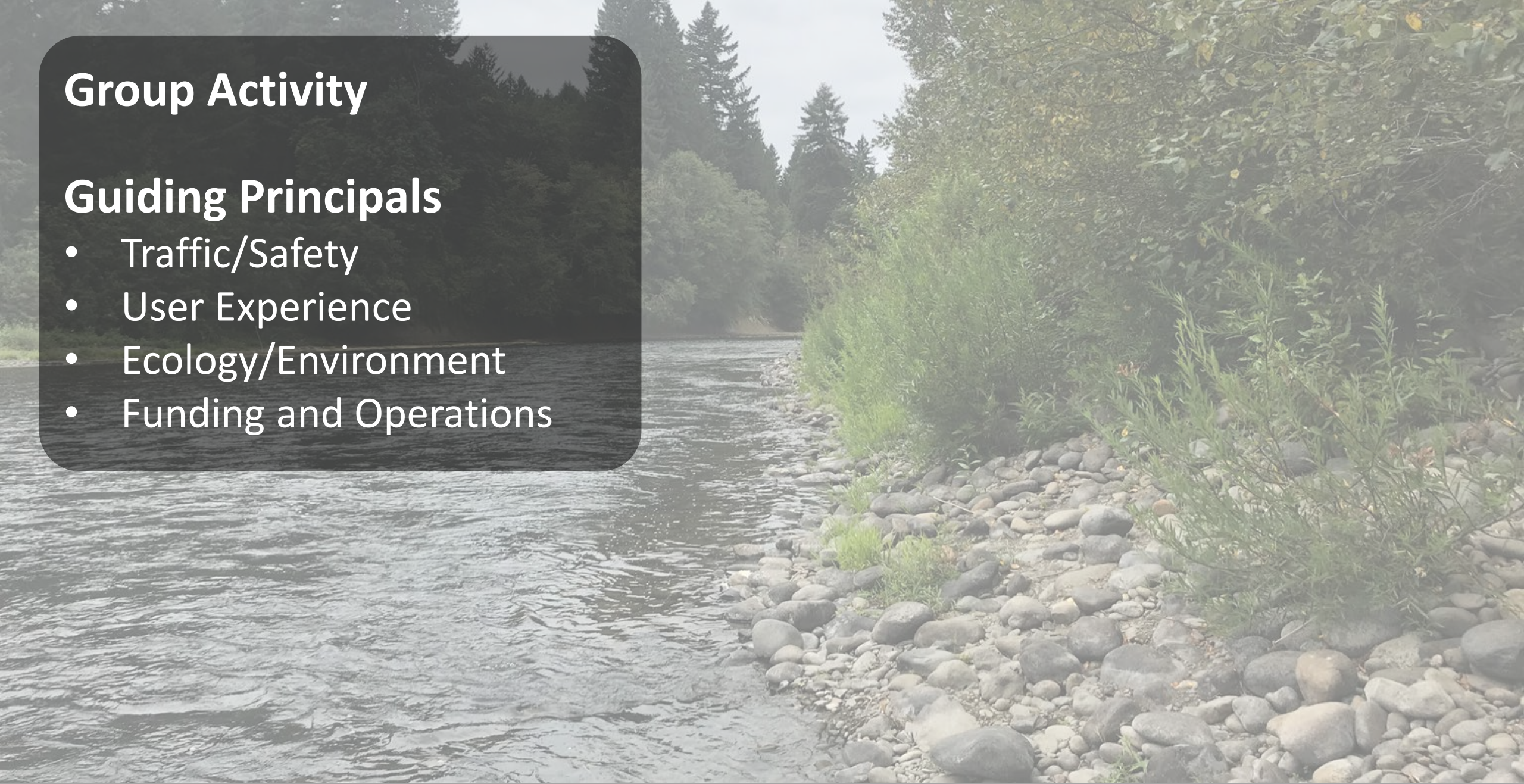




# Group Activity

## Guiding Principals

- Traffic/Safety
- User Experience
- Ecology/Environment
- Funding and Operations



# What's Next?

- Open House #2: March 16<sup>th</sup>
- On-line Survey: Begins Mid March
- PAB and PBC Presentations: March
- Prepare Draft Master Plan: April
- Working Group Meeting #4: May