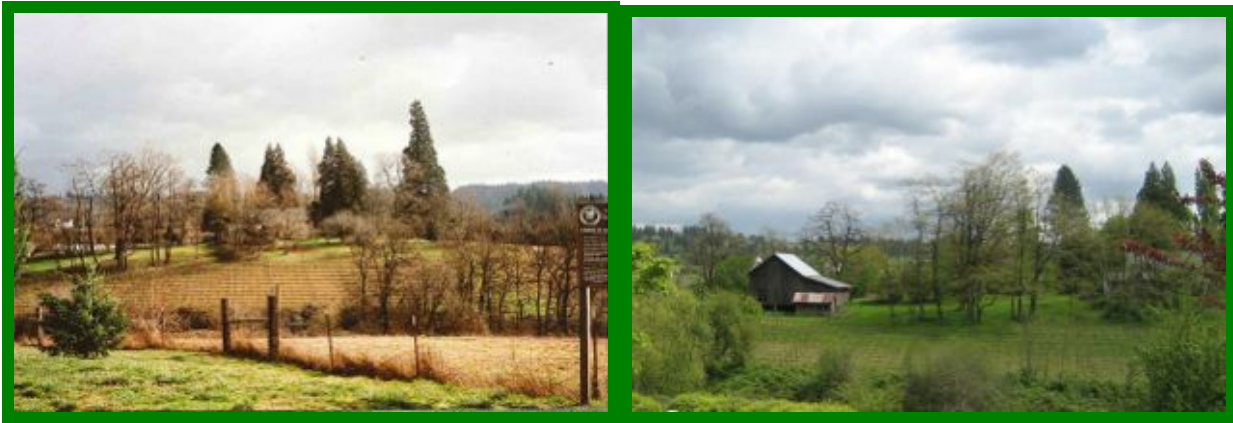


Clackamas County Heritage Tree

SHIPLEY-COOK FARMSTEAD COLLECTION OF HERITAGE TREES

American chestnut, Black locust, Copper beech, European filbert, Giant sequoias, Mulberry, Oregon ash, Oregon white oak, Pacific Madrone, Pacific yew, Ponderosa pine, Port-Orford-cedar, Shellbark hickory, Southern magnolia, Sugar maple, White spruce

 **Location:** 18451 SW Stafford Road, Lake Oswego Area



Shipley- Cook Farmstead c. 1862



Beech (*Fagus fagaceae*)

- 🌳 **Measurements (approximate):**
Height: **75'**
Circumference (meas. at 4 ½'): **11' 2"**
Age: **146 years, planted 1862**



Black Locust (*Robinia pseudoacacia*) Stand of two

- 🌳 **Measurements (approximate):**
Height: **85', 60'**
Circumference (meas. at 4 ½'): **11', 8' 8"**
Age: **146 years, planted 1862**




American chestnut (*Castanea dentata*)

Measurements (approximate):
Height: 80'
Circumference (meas. at 4 ½'): 9' 5"
Age: 146 years, planted 1862



**Giant Sequoia / Sierra redwood
(*Sequoiadendron giganteum*) Stand of two**

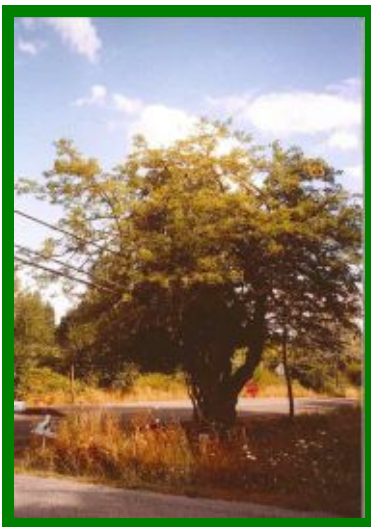
 **Measurements (approximate):**
Height: 120', 90'
Circumference (meas. at 4 ½'): 24' 8", 21' 2"
Age: 146 years, planted 1862

**European filbert (hazelnut)
(*Corylus avellana* L.) Age: 108 years, planted 1900 *(no picture)***



Southern Magnolia (*Magnolia grandiflora*)

- 🌳 Measurements (approximate):
 - Height: 45'
 - Circumference (meas. at 4 ½'): 4' 11"
 - Age: 63 years, planted 1945



Mulberry (*Morus*)

- 🌳 Measurements (approximate):
 - Height: 25'
 - Circumference (meas. at 4 ½'): 10' 2"
 - Age: 146 years, planted 1862



Oregon Ash (*Fraxinus latifolia*)

Trunk of Ash on right

- 🌲 **Measurements (approximate):**
Height: 45'
Circumference (meas. at 4 ½'): 9'
Age: 146 years, planted 1862

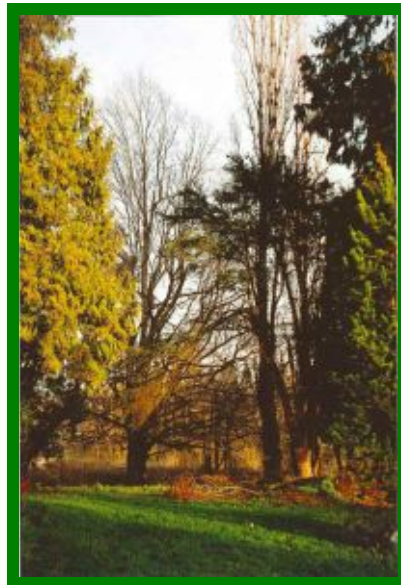


Oregon White Oak (*Quercus garryana*)
Trunk of oak front left

- 🌲 **Measurements (approximate):**
Height: 24' – 50'
Circumference (meas. at 4 ½'): 6' 7"
Age: 146 years, planted 1862

Pacific madrone (*Arbutus menziesii*) *(no picture)*

- 🌲 **Measurements (approximate):**
Height: 60'
Circumference (meas. at 4 ½'): 8' 6"
Age: 146 years, planted 1862



Pacific Yew (*Taxus brevifolia*) *Yew trunk rear right*

- 🌲 **Measurements (approximate):**
Height: **35**
Circumference (meas. at 4 ½'): **8'2"**
Age: **146 years, planted 1862**



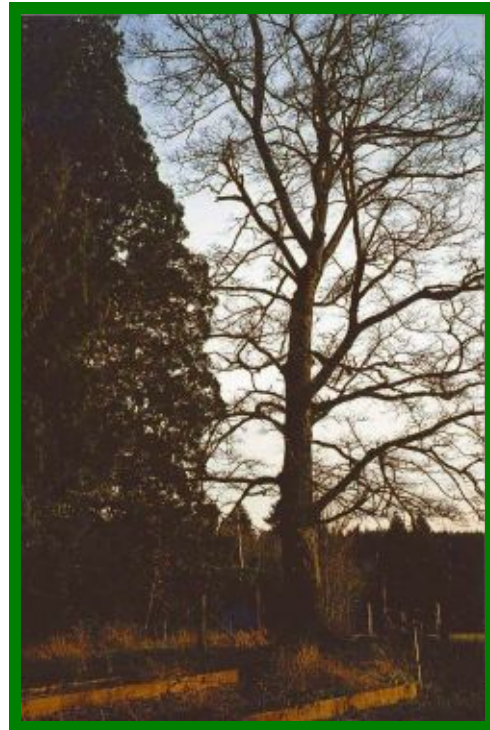
Cook Ponderosa Pine (*Pinus ponderosa*) *Left to right: Pine, Maple, Ash*

- 🌲 **Measurements (approximate):**
Height: **90'**
Circumference (meas. at 4 ½'): **10'**
Age: **76 years, planted 1932**



Shellbark Hickory (*Carya laciniosa*)
Hickory - center

- 🌲 **Measurements (approximate):**
Height: **50'- 60'**
Circumference (meas. at 4 ½'): **6' 8"**
Age: **146 years, planted 1862**



Sugar Maple (*Acer saccharum*) Stand of two

 **Measurements (approximate):**

Height: **50', 70'**

Circumference (meas. at 4 ½'): **16' 5", 11' 6"**

Age: **146 years, planted 1862**

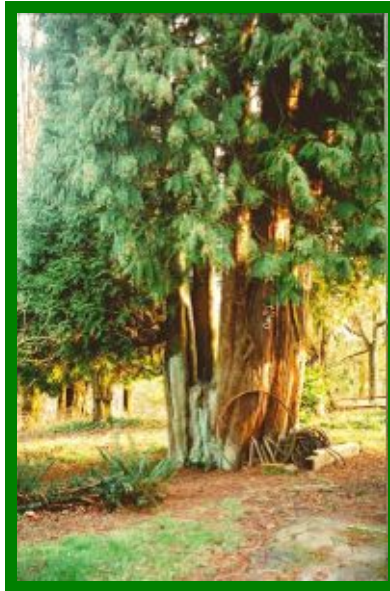
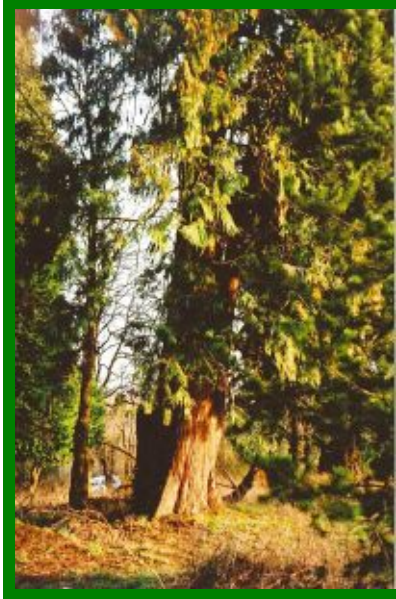
White Spruce (*Picea glauca*) (no picture)

 **Measurements (approximate):**

Height: **45'-50'**

Circumference (meas. at 4 ½'): **4' 8"**

Age: **55-60 years, planted 1950s**



Port-Orford-Cedar (*Chameacyparis lawsoniana*) Stand of two

Measurements (approximate):


Height: 75' – 80'

Circumference (meas. at 4 ½'): 22' 11", 21' 2"

Age: 146 years, planted 1862

 **Significance:** *Specimen trees* and *Historical Association* with Shipley Cook Farmstead, National Register of Historic Places and Clackamas County Historic Landmark

 **Dedication Ceremony:** May 1, 2008

 **Additional Information:** The Shipley-Cook Farmstead is located in the historic Hazelia area south of Lake Oswego at the cross roads of Rosemont and Stafford Roads. It was designated a Clackamas County Historic Landmark in 1992. In 2000 it officially became a Century Farm and on January 29, 2008 it was added to the National Register of Historic Places. The Shipley family built the Vernacular style farm house (with Gothic Revival stylistic elements) and farm outbuildings in 1862-63.

From the National Register Form:

“Adam Shipley’s long-standing and intense interest in horticulture during his lifetime is evident today at the farm. A majority of the trees and shrubs he planted are still around the farm house; most notably are the tall cedars, beautiful magnolia, and flowering shrubs...

...In 1900 James Preston Cook purchased the Shipley farm. Cook continued to improve the acreage, adding to the farm buildings and planting additional shade trees on the acreage.

An article in the Oregon City Banner-Courier of May 1, 1930 talks about the Cook farm and the variety of plantings:

One of the noticeable features of this Pioneer home place are the unusually large number and variety of trees planted years ago by the Shipley family, and one of the peculiarities in the growth of some of these, which are growing in clusters. There are 21 Oregon native cedars growing in one cluster from a single root.

In the collection of trees you will find vine maple, Oregon laurel, mulberry, elm, native maple, persimmons, Alaska cedar, rock oak, black locust, Shelbrook hickory, wahoo, Port Orford cedar, mountain ash, yew, sequoia (redwood of California), Mt. Hood cypress, eastern sugar maple, eastern chestnut, beech nut, poplar, native oak, willow of three varieties, eastern elderberry, Lombarda, mountain ash and among the smaller trees you will find even the fig tree. There are various kinds of shrubbery including purple lilac and other flowering shrubs. Even the eastern Oregon sage is thriving in the ground at the Cook Farm.”“

As per the current owner, grandson of James Preston Cook, Shipley may have brought some of the trees with him from Ohio when he came to Oregon. He also started the first grange in the Stafford area, the Hazelia Grange and was a post master. He may have received seeds and trees through these two sources as well.