

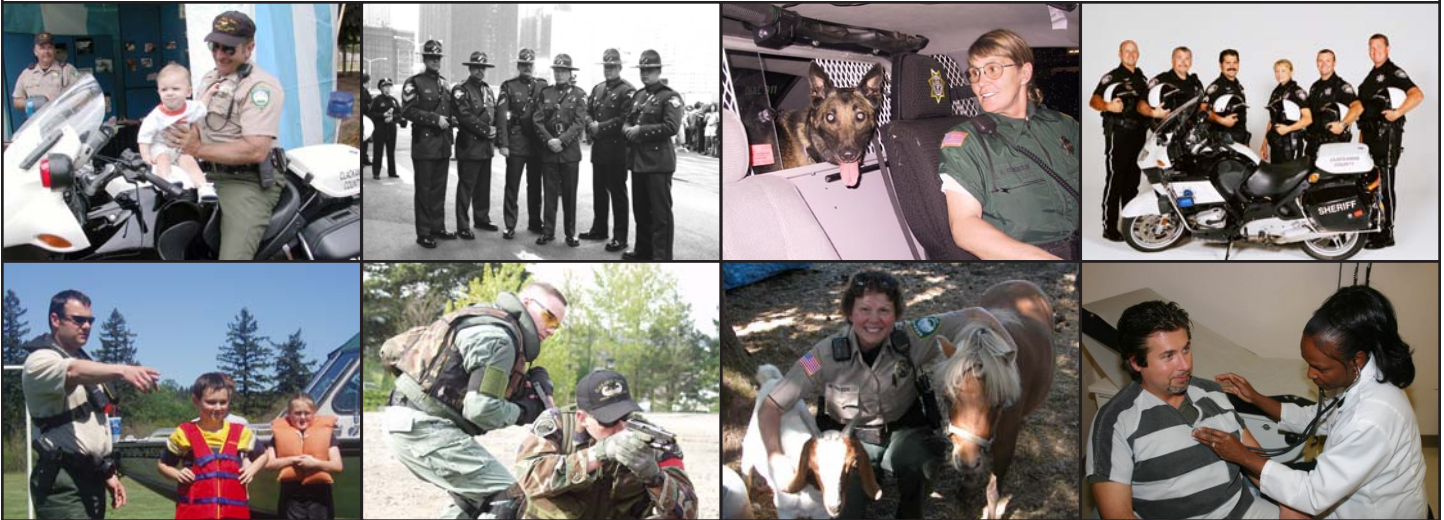
# Clackamas County Sheriff's Office

---

# 2006

ANNUAL CRIME REPORT





# Analysis of Crimes in Clackamas County

# 2006

Prepared by the  
**Clackamas County Sheriff's Office  
Crime Analysis Unit**

2223 Kaen Road • Oregon City, Oregon 97045 •  
(503) 655-8823

**Craig Roberts, Sheriff**  
**Charley Bowen, Undersheriff**  
**Shara VanMeter, Crime Analyst**

Prepared April 13, 2007



**On the cover:**  
Image detail from one of  
two murals created for  
the Clackamas County  
Sheriff's Office by West  
Linn High art students  
Shannon McDonald and  
Aurelia Rohrbacker,  
under the supervision of  
teacher Lynn Pass.



# Table of Contents

Clackamas County at a Glance .....	<b>4</b>
Map of Patrol Districts .....	<b>5</b>
Population Totals .....	<b>6</b>
Reports Processed .....	<b>7</b>
Are Crimes Up or Down? .....	<b>8</b>
Crime Rates per 1,000 Population .....	<b>9</b>
All Crimes Reported .....	<b>10-11</b>
All Crimes Reported by Patrol District .....	<b>12-13</b>
Crimes by Type Graph .....	<b>14</b>
Crimes Reported by Month Graph .....	<b>14</b>
Domestic Violence Summary .....	<b>15</b>
Domestic Violence Crimes .....	<b>16</b>
Stolen Vehicles by Patrol District .....	<b>17</b>
Stolen Vehicles by Make .....	<b>18</b>
Top 10 Stolen Vehicles .....	<b>18</b>
Stolen Vehicles by Month .....	<b>19</b>
Stolen Vehicles: 15-Year History Graph .....	<b>19</b>
Towed Vehicles by Year .....	<b>20</b>
Recovered Stolen Vehicles by Patrol District .....	<b>20</b>
Recovered Stolen Vehicles Graph .....	<b>21</b>
Recovered Stolen Vehicles: 15-Year History Graph .....	<b>21</b>
Calls for Service .....	<b>22-24</b>
Calls for Service: Yearly Totals Graph .....	<b>25</b>
Property Room: 15-year History .....	<b>25</b>
S.W.A.T. ....	<b>26</b>
Traffic/DUII Arrests .....	<b>27-28</b>
Death Investigations .....	<b>29</b>
2006 Sheriff's Office Awards .....	<b>30</b>
Citizens Informational Sheriff's Academy (CISA) .....	<b>31</b>

# Clackamas County at a glance

**C**lackamas County, named for the resident Clackamas Indians, was established July 5th, 1843. Oregon City, the county seat, was the first incorporated city west of the Rockies, the first capital of the territorial government in 1848 and the site of the first state legislative session.

The County encompasses 1,893 square miles — well over a million acres. It ranks 18th in size and third in the state of Oregon for total population, with an estimated population of 367,040 people. About 47 percent of the population lives in urban areas, with the remaining proportion in rural areas and towns. The largest cities in the county are Lake Oswego with a population of 36,350, Oregon City with a population of 29,540, West Linn with a population of 24,180 and Milwaukie with a population of 20,835 people.

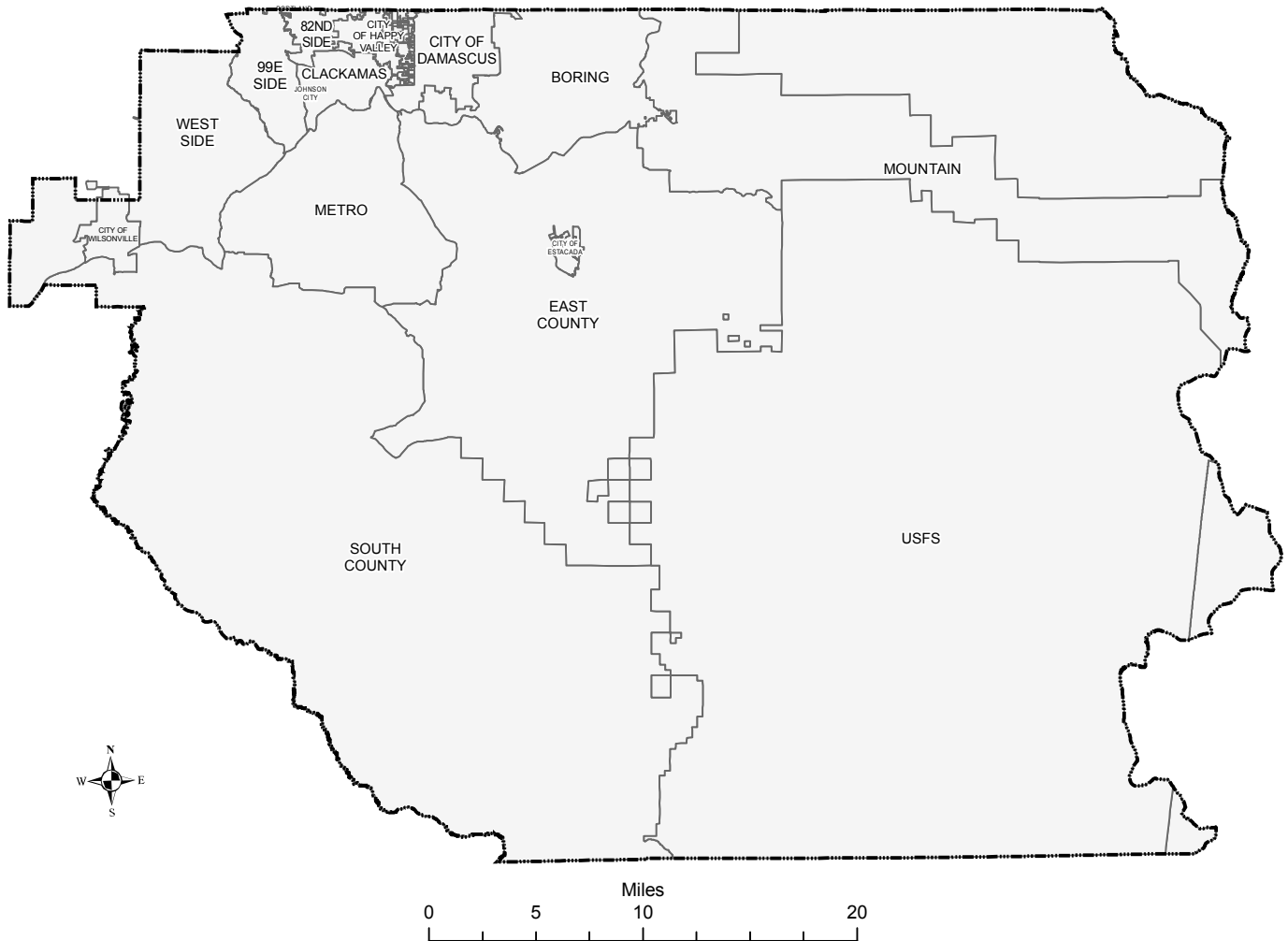


Clackamas County is located in the northern Willamette Valley of western Oregon. Hood River and Wasco counties bound the county on the East with Multnomah County sitting to the North. Marion County borders the south and also on the west along with Yamhill and Washington Counties. Butte Creek forms most of the western boundary while the eastern boundary generally follows the crest of the Cascade Mountains.

From an elevation at Oregon City of 55 feet, the county rises to 11,235 feet at the peak of Mt. Hood on its northeastern boundary — the highest point in the state. Forest resources, lakes, rivers and streams provide numerous opportunities for hunting and fishing, as well as camping and other forms of recreation. Special points of scenic and historic interest are Willamette Falls, the McLoughlin House, Lake Oswego, Wilhoit Mineral Springs, Mt Hood and Timberline Lodge.

# Patrol Districts

## Clackamas County Sheriff's Office



# Clackamas County Population Totals

Portland State University Population Research Center: <http://www.pdx.edu/prc/annualorpopulation.html>

AREA	1997	1998	1999	2000	2001	2002	2003	2004	2005	2006
Clackamas Co.	317,700	323,600	326,850	332,850	340,000	345,150	353,450	356,250	361,300	367,040

INCORPORATED CITIES										
Canby	11,725	12,465	12,595	13,170	12,910	12,790	13,910	14,110	14,385	14,705
Damascus*									9,380	9,670
Estacada*	2,100	2,190	2,200	2,200	2,380	2,460	2,440	2,450	2,480	2,580
Gladstone	11,680	11,745	11,695	12,020	11,470	11,450	11,790	12,140	12,170	12,210
Happy Valley*	3,125	3,125	3,965	4,650	4,650	4,930	6,370	6,640	7,275	9,210
Lake Oswego	34,065	34,280	34,110	35,305	35,415	35,580	35,860	35,930	36,075	36,350
Milwaukie	20,055	20,220	20,075	20,250	20,540	20,550	20,580	20,590	20,655	20,835
Molalla	4,920	5,395	5,670	5,720	5,710	5,690	5,800	5,930	6,395	6,830
Oregon City	21,895	22,560	23,405	24,940	26,200	26,680	28,100	28,370	28,965	29,540
Sandy	5,030	5,135	5,300	5,655	5,425	5,380	6,200	6,360	6,645	7,070
West Linn	20,415	21,405	22,835	23,380	22,440	23,090	23,820	23,970	24,080	24,180
Wilsonville*	10,940	12,290	12,985	13,615	14,365	14,170	15,880	16,250	16,510	16,885
<b>TOTAL=</b>	145,950	150,810	154,835	160,905	161,505	162,770	170,750	172,740	185,015	190,065

\* Contract Cities patrolled by Clackamas County Sheriff's Office

Incorporated Cities										
Contract Cities	16,165	17,605	19,150	20,465	21,395	21,560	24,690	25,340	35,645	38,345
Other Cities	129,785	133,205	135,685	140,440	140,110	141,210	146,060	147,400	149,370	151,720

TOTAL AREA PATROLLED BY CCSO (Including Damascus, Estacada, Happy Valley & Wilsonville)										2006
Patrol Area	187,915	190,395	191,165	192,410	199,890	203,940	207,390	208,850	211,930	215,320

POPULATION OF OTHER COUNTY AREAS OF INTEREST (These are included in the CCSO patrol area above)										
Johnson City	625	625	615	635	635	630	630	630	630	675
Barlow	125	125	125	140	140	140	140	140	140	140
River Grove	300	300	310	325	325	320	320	340	350	350

# Reports Processed

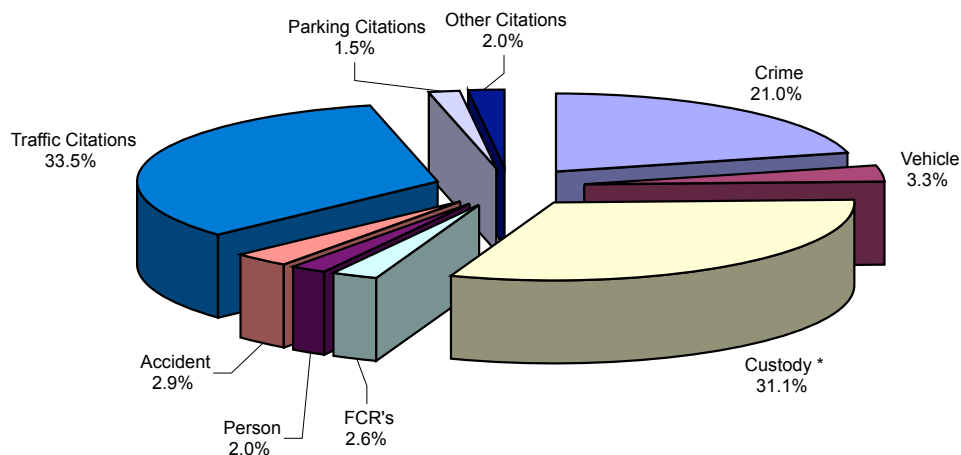
**D**uring 2006 the Clackamas County Sheriff's Office processed 54,341 reports that were entered into the C.L.A.S.S. computer. During 2005 the Sheriff's Office processed 59,797 reports. This is a decrease of 5,456 reports or 9.1% during 2006 compared to 2005.

The average number of reports processed during the previous three years was 58,963.4. The 54,341 reports processed during 2006 is a decrease of 4,622.4 reports or 7.8%.

The chart below is a breakdown of report types and total number processed for each type during 2006, 2005 and the average for the previous three years of 2003, 2004, and 2005.

Report Type	2006	Monthly Average	2005	Monthly Average	3 Year Average	Monthly Average	% Change From 3 Yr Average
Crime	11,426	952.2	12,731	1,060.9	12,919.7	1,076.6	-11.6%
Vehicle	1,788	149.0	2,581	215.1	2,566.0	213.8	-30.3%
Custody *	16,920	1,410.0	16,692	1,391.0	16,912.0	1,409.3	0.0%
FCR's	1,403	116.9	1,168	97.3	1,370.7	114.2	2.4%
Person	1,101	91.8	1,142	95.2	1,183.3	98.6	-7.0%
Accident	1,567	130.6	1,500	125.0	1,521.7	126.8	3.0%
Traffic Citations	18,183	1,515.3	22,022	1,835.2	20,597.7	1,716.5	-11.7%
Parking Citations	841	70.1	938	78.2	973.7	81.1	-13.6%
Other Citations	1,112	92.7	1,023	85.3	918.7	76.6	21.0%
<b>Total:</b>	<b>54,341</b>	<b>4,528.4</b>	<b>59,797</b>	<b>4,983.1</b>	<b>58,963.4</b>	<b>4,913.6</b>	<b>-7.8%</b>

\* Includes all custody reports processed by the Jail and Records, regardless of the arresting agency.



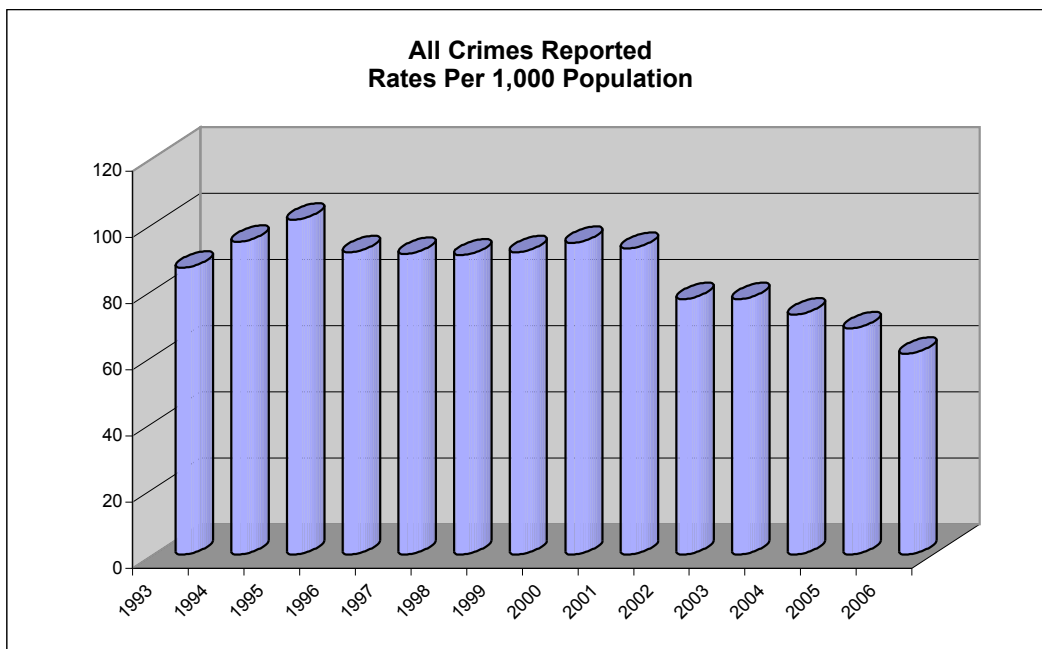
# Are Crimes UP<sup>or</sup> DOWN?

	<b>2006 Change From 2005</b>	<b>2006 Change From 3-yr. Average</b>
<b>All Reported Crimes</b>	<b>-9.8%</b>	<b>-11.4%</b>
<b>State Part I Crimes</b>	<b>-17.9%</b>	<b>-20.4%</b>
<b>County Top Six Crimes</b>	<b>-13.0%</b>	<b>-12.8%</b>
Theft	-17.8%	-19.9%
Criminal Mischief	11.4%	4.1%
Burglary	-15.9%	-18.9%
Stolen Vehicles	-27.8%	-31.0%
Identity Theft	-2.2%	-8.0%
Assault	-3.7%	-9.7%
<b>Person Crimes</b>	<b>-10.6%</b>	<b>-13.9%</b>
<b>Property Crimes</b>	<b>-12.1%</b>	<b>-15.2%</b>
<b>Behavioral Crimes</b>	<b>14.1%</b>	<b>-4.9%</b>



# Crime Rates per 1,000 population

	2006	2005	Prior 3 Year Average
<b>All Reported Crimes</b>	60.6	68.3	72.6
<b>State Part I Crimes</b>	33.3	41.3	43.1
<b>State Part II Crimes</b>	27.2	27.0	29.5
<b>County Top Six Crimes</b>	45.3	52.9	55.7
Theft	22.6	27.9	29.0
Criminal Mischief	7.2	6.5	7.1
Burglary	5.3	6.4	6.7
Stolen Vehicles	3.7	5.2	5.5
Identity Theft	3.9	4.1	4.4
Assault	2.7	2.8	3.0
<b>Person Crimes</b>	7.8	8.9	9.3
<b>Property Crimes</b>	46.8	54.1	56.8
<b>Behavioral Crimes</b>	5.9	5.3	6.4



# All Crimes Reported

PART I CRIMES	TYPE	2006	2005	3 Yr Ave. 2003/04/05
Arson	Pr	38	22	24.3
Assault, Aggravated	Pe	160	155	161.3
Burglary	Pr	1,137	1,352	1,401.3
Attempt Murder	Pe	11	13	12.0
Murder	Pe	5	5	4.3
Rape	Pe	56	65	72.7
Robbery	Pe	108	110	114.3
Theft (All)	Pr	4,864	5,916	6,070.3
Stolen Vehicles	Pr	798	1,106	1,156.0
<b>Part I Totals:</b>		<b>7,177</b>	<b>8,744</b>	<b>9,016.6</b>

PART II CRIMES	TYPE	2006	2005	3 Year Average
Assault, Simple	Pe	411	438	471.0
Child Abuse/Neglect	Pe	26	17	26.3
Crimes Against Family	Pe	265	391	355.3
Criminal Mischief	Pr	1,542	1,384	1,481.3
Criminal Trespass	Be	197	192	198.7
Cruelty to Animals	Be	27	38	39.0
Disorderly Conduct	Be	46	35	36.3
Drug Charges (all)	Be	428	387	473.0
Forgery	Pr	350	368	416.7
Fraud use Credit Card	Pr	216	220	210.3
Harassment	Pe	271	267	287.0
Identity Theft	Pr	847	866	920.7
Kidnapping	Pe	18	26	25.0
Manslaughter/Neg Hom.	Pe		3	1.7
Menacing	Pe	187	200	222.3
Negotiate a Bad Check	Pr	55	44	62.3
Offensive Littering	Be	24	25	30.3
Prostitution	Be	3	2	2.3
Public / Private Indecency	Be	20	11	16.7
Recklessly Endangering	Pe	36	39	47.0
Resisting Arrest	Be	21	28	34.3
Sex Crimes (Other)	Pe	21	15	21.7
Sexual Abuse	Pe	60	86	89.3
Sodomy	Pe	16	13	21.0
Strangulation	Pe	31	39	21.7
Unlawful Entry Into Motor Veh.	Pr	234	185	148.7
Weapons Violations	Be	83	84	100.0
Crimes Not Listed above	Be	432	321	417.0
<b>Part II Totals:</b>		<b>5,867</b>	<b>5,724</b>	<b>6,177.0</b>

GRAND TOTALS		2006	2005	3 Year Average
Part I & Part II		13,044	14,468	15,193.6

# All Crimes Reported

continued

CRIME TYPES	2006	2005	3 Year Average
Person Crimes	1,682	1,882	1,954.0
Property Crimes	10,081	11,463	11,892.0
Behavioral Crimes	1,281	1,123	1,347.7

RECOVERED STOLEN VEHICLES	2006	2005	3 Year Average
Recovered Vehicles	653	984	918.0

COUNTY TOP SIX	2006	2005	3 Year Average
Theft	4,864	5,916	6,070.3
Criminal Mischief	1,542	1,384	1,481.3
Burglary	1,137	1,352	1,401.3
Stolen Vehicle	798	1,106	1,156.0
Identity Theft	847	866	920.7
Assault	571	593	632.3
<b>Total:</b>	<b>9,759</b>	<b>11,217</b>	<b>11,662.0</b>

OTHER PART II CRIMES	2006	2005	3 Year Average
D.U.I.I. Arrests	707	584	605.3
Minor in Possession of Alcohol	267	169	191.3
Runaway Juveniles	497	451	498.7

CRIMES AGAINST FAMILY	2006	2005	3 Year Average
Criminal Mistreatment	17	27	40.3
Custodial Interference	8	5	5.7
Violation of Restraining Order	240	359	292.0
<b>Total:</b>	<b>265</b>	<b>391</b>	<b>338.0</b>

THEFTS BY TYPE	2006	2005	3 Year Average
Theft I	1,168	1,340	1,277.7
Theft II	2,457	2,909	3,199.3
Theft III	1,163	1,212	1,164.7
Theft By Deception	20	19	35.0
Theft By Extortion			1.3
Theft By Receiving	12	20	22.3
Theft of Lost/Mislaid Property	9	60	103.7
Theft of Mail	18	336	342.0
Theft of Services	17	20	25.7
<b>Total:</b>	<b>4,864</b>	<b>5,916</b>	<b>6,171.7</b>

# 2006 Crimes Reported by District

PART I CRIMES	West	Wils.	99E	82nd	HV	CLK	Boring	Dam.	Mtn.	Metro	East	Est.	South	USFS	College	Parks	CR	TOTAL
Arson	1	4	4	8	1	7	2	1	1	2	1		5				1	38
Assault, Aggravated	1	6	34	32		18	8	5	5	10	8	3	21	6		1	2	160
Burglary	37	75	190	170	47	184	62	34	88	45	76	24	92	3	2		8	1,137
Attempt Murder				6		1		1					1	2				11
Murder		1	1	2		1												5
Rape	1	3	10	12		11	2				1	4	3					56
Robbery	1	10	32	28		24	3	1		3	2	2		1			1	108
Theft (All)	143	438	653	1,062	125	1,353	147	102	140	108	164	69	152	79	54	6	69	4,864
Stolen Vehicles	8	52	95	208	14	200	41	22	17	16	40	16	45	3	3	3	15	798
<b>Part I Totals:</b>	<b>192</b>	<b>589</b>	<b>1,019</b>	<b>1,528</b>	<b>187</b>	<b>1,799</b>	<b>265</b>	<b>166</b>	<b>251</b>	<b>184</b>	<b>292</b>	<b>118</b>	<b>319</b>	<b>94</b>	<b>59</b>	<b>10</b>	<b>105</b>	<b>7,177</b>
% of Total:	55.2%	59.9%	51.5%	59.1%	52.4%	64.5%	61.8%	50.9%	56.3%	48.4%	56.5%	46.3%	51.8%	71.8%	77.6%	47.6%	26.4%	56.8%

PART II CRIMES	West	Wils.	99E	82nd	HV	CLK	Boring	Dam.	Mtn.	Metro	East	Est.	South	USFS	College	Parks	CR	TOTAL
Assault, Simple	1	35	76	66	6	59	11	15	26	18	25	13	40	7	1	3	9	411
Child Abuse/Neglect		2	8	7		1					2	2	3				1	26
Crimes Against Family	2	23	59	43	2	54	15	20	11	9	11		9	1			6	265
Criminal Mischief	60	130	294	217	70	308	46	39	72	55	63	46	100	16	7	5	14	1,542
Criminal Trespass	5	20	27	73	3	36	3	3	5	4	3	3	10			1	1	197
Cruelty to Animals	2		2	3		2	1	3	3	3	3		5					27
Disorderly Conduct		6	10	7		9	3	1	2	1	2	2	1				2	46
Drug Charges (all)	3	26	104	64	13	53	11	15	25	6	21	25	12				50	428
Forgery	4	14	47	131	8	79	10	6	6	4	2	4	4				31	350
Fraud use Credit Card	2	10	35	56	4	57	7	1	3	12	12	6	2	1			8	216
Harassment	8	20	54	58	9	34	4	15	8	18	8	9	22	1		1	2	271
Identity Theft	37	40	139	173	29	150	23	31	14	39	37	4	51	1	1		78	847
Kidnapping		2	2	4		3	1		1		1	1	1				2	18
Manslaughter/Neg Hom.																		
Menacing	3	15	28	28	2	27	8	4	12	12	10	9	23	4	1		1	187
Negotiate a Bad Check	2	5	3	23		14	1						3		1		3	55
Offensive Littering	4		2	3	1	3	1		2	1	1	1	1	3			1	24
Prostitution			1	1		1												3
Public / Private Indecency		4	1	9	2	3			1									20
Recklessly Endangering		5	4	8		4	2		2	2	2		6				1	36
Resisting Arrest		2	5	3	1	4			1		3		1				1	21
Sex Crimes (Other)			7	1		5				1	3	2		1			1	21
Sexual Abuse	1	4	10	11		9	1	5	2		1	1	8	2			5	60
Sodomy			2	3		3		1	1	4		1					1	16
Strangulation		4	5	6	1	2		3		1	2	1	5	1				31
Unlawful Entry Into Mtr Veh	15	22	31	41	13	61	1	1	5	9	10	8	7	5	4	1		234
Weapons Violations		5	16	12	1	11	7	3	3	2	7	4	9	1			2	83
Crimes Not Listed above	8	35	64	71	11	56	19	9	16	13	21	8	14		3	3	81	432
<b>Part II Totals:</b>	<b>156</b>	<b>394</b>	<b>960</b>	<b>1,056</b>	<b>170</b>	<b>989</b>	<b>164</b>	<b>160</b>	<b>195</b>	<b>196</b>	<b>225</b>	<b>137</b>	<b>297</b>	<b>37</b>	<b>17</b>	<b>11</b>	<b>292</b>	<b>5,456</b>
% of Total:	44.8%	40.1%	48.5%	40.9%	47.6%	35.5%	38.2%	49.1%	43.7%	51.6%	43.5%	53.7%	48.2%	28.2%	22.4%	52.4%	73.6%	43.2%

	West	Wils.	99E	82nd	HV	CLK	Boring	Dam.	Mtn.	Metro	East	Est.	South	USFS	College	Parks	CR	TOTAL
<b>GRAND TOTALS</b>	<b>348</b>	<b>983</b>	<b>1,979</b>	<b>2,584</b>	<b>357</b>	<b>2,788</b>	<b>429</b>	<b>326</b>	<b>446</b>	<b>380</b>	<b>517</b>	<b>255</b>	<b>616</b>	<b>131</b>	<b>76</b>	<b>21</b>	<b>397</b>	<b>12,633</b>
% of Grand Total:	2.8%	7.8%	15.7%	20.5%	2.8%	22.1%	3.4%	2.6%	3.5%	3.0%	4.1%	2.0%	4.9%	1.0%	0.6%	0.2%	3.1%	

# 2006 Crimes

## Reported by District

continued

CRIME TYPES	West	Wils.	99E	82nd	HV	CLK	Boring	Dam.	Mtn.	Metro	East	Est.	South	USFS	College	Parks	CR	TOTAL
<b>Person Crimes</b>	18	130	332	315	20	256	55	70	68	78	76	48	142	26	2	5	41	1,682
% of Total	5.2%	13.2%	16.8%	12.2%	5.6%	9.2%	12.8%	21.5%	15.2%	20.5%	14.7%	18.8%	23.1%	19.8%	2.6%	23.8%	10.3%	13.3%
<b>Property Crimes</b>	309	790	1,491	2,089	311	2,413	340	237	346	290	405	177	461	108	72	15	227	10,081
% of Total	88.8%	80.4%	75.3%	80.8%	87.1%	86.5%	79.3%	72.7%	77.6%	76.3%	78.3%	69.4%	74.8%	82.4%	94.7%	71.4%	57.2%	79.8%
<b>Behavioral Crimes</b>	22	98	232	246	32	178	45	34	58	30	61	43	53	4	3	4	138	1,281
% of Total	6.3%	10.0%	11.7%	9.5%	9.0%	6.4%	10.5%	10.4%	13.0%	7.9%	11.8%	16.9%	8.6%	3.1%	3.9%	19.0%	34.8%	10.1%

Recovered Vehicles	West	Wils.	99E	82nd	HV	CLK	Boring	Dam.	Mtn.	Metro	East	Est.	South	USFS	College	Parks	CR	TOTAL
	6	32	76	129	9	111	40	20	21	21	63	11	51	21		2	40	653

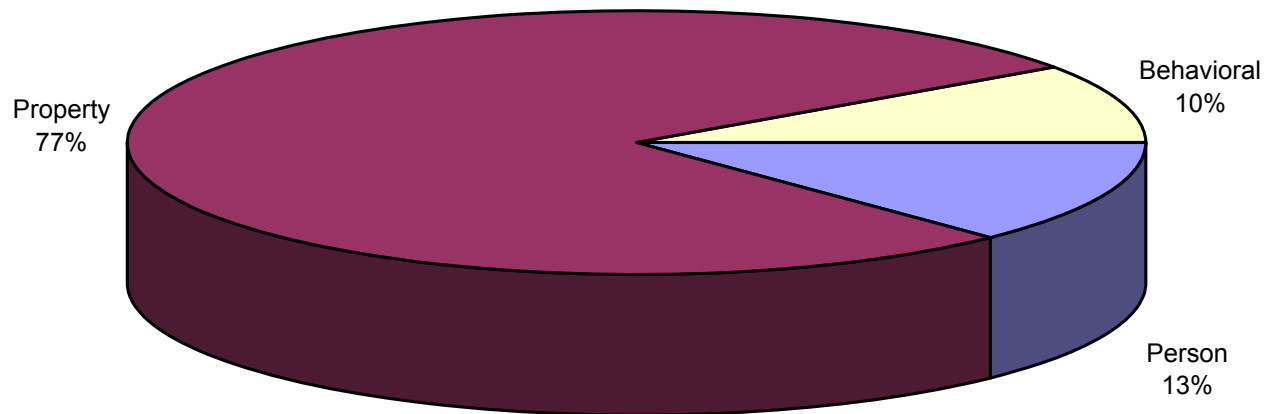
County Top Six	West	Wils.	99E	82nd	HV	CLK	Boring	Dam.	Mtn.	Metro	East	Est.	South	USFS	College	Parks	CR	TOTAL
<b>Theft</b>	143	438	653	1,062	125	1,353	147	102	140	108	164	69	152	79	54	6	69	4,864
<b>Criminal Mischief</b>	60	130	294	217	70	308	46	39	72	55	63	46	100	16	7	5	14	1,542
<b>Burglary</b>	37	75	190	170	47	184	62	34	88	45	76	24	92	3	2		8	1,137
<b>Stolen Vehicle</b>	8	52	95	208	14	200	41	22	17	16	40	16	45	3	3	3	15	798
<b>Identity Theft</b>	37	40	139	173	29	150	23	31	14	39	37	4	51	1	1		78	847
<b>Assault</b>	1	6	34	32		18	8	5	5	10	8	3	21	6			2	159
<b>Total:</b>	286	741	1,405	1,862	285	2,213	327	233	336	273	388	162	461	108	67	14	186	9,347

OTHER PART II CRIMES	West	Wils.	99E	82nd	HV	CLK	Boring	Dam.	Mtn.	Metro	East	Est.	South	USFS	College	Parks	CR	TOTAL
<b>D.U.I. Arrests</b>	18	70	112	106	9	97	39	31	16	25	25	13	59	1			86	707
<b>Minor in Poss/Alcohol</b>	2	12	40	44	28	49	10	1	3	4	9	3	25	3		24	10	267
<b>Runaway Juveniles</b>	3	31	80	75	7	79	22	28	16	38	45	21	37				15	497

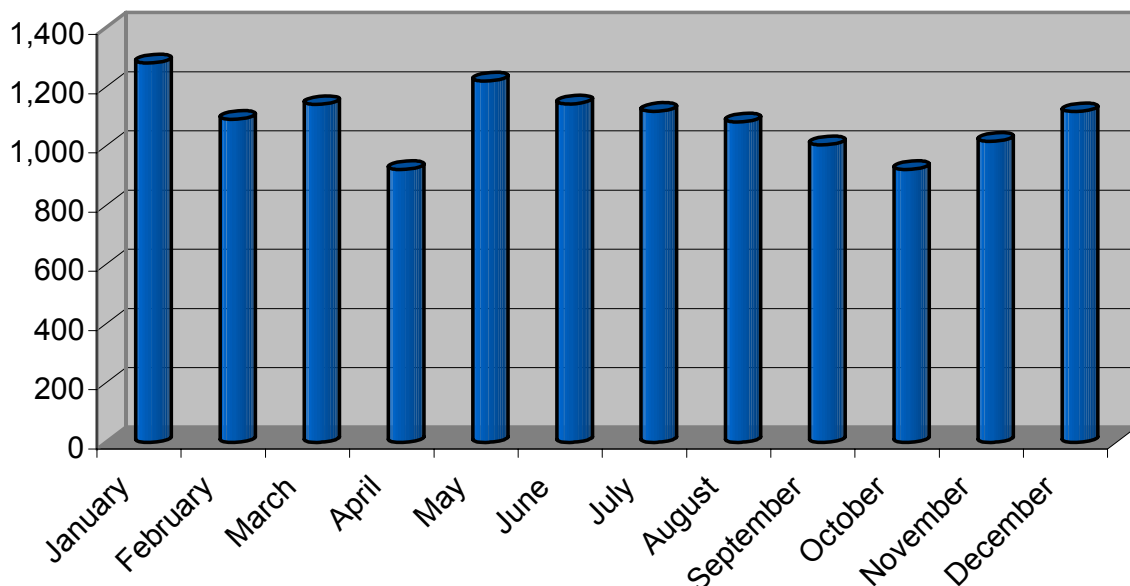
Crimes Against Family	West	Wils.	99E	82nd	HV	CLK	Boring	Dam.	Mtn.	Metro	East	Est.	South	USFS	College	Parks	CR	TOTAL
<b>Criminal Mistreatment</b>		2	5	5		1			1	2	1							17
<b>Custodial Interference</b>	1		2	2			2			1								8
<b>Viol. Restraining Order</b>	1	21	52	36	2	53	13	20	10	6	10		9	1			6	240
<b>Total:</b>	2	23	59	43	2	54	15	20	11	9	11		9	1			6	265

Types of Thefts	West	Wils.	99E	82nd	HV	CLK	Boring	Dam.	Mtn.	Metro	East	Est.	South	USFS	College	Parks	CR	TOTAL
<b>Theft I</b>	35	94	158	192	46	296	43	31	36	41	52	13	60	35	16	3	17	1,168
<b>Theft II</b>	89	252	323	528	64	733	63	45	67	33	64	37	54	41	30	2	32	2,457
<b>Theft III</b>	17	80	163	329	11	316	38	13	37	33	46	16	33	3	8	1	19	1,163
<b>Theft by Deception</b>	2	1	3	5	1	3	1				1		3					20
<b>Theft by Extortion</b>																		
<b>Theft by Receiving</b>			4	1		3	1			1	1						1	12
<b>Theft of Lost/Missing</b>		5			1			2				1						9
<b>Theft of Mail</b>		4			2			11				1						18
<b>Theft of Services</b>		2	2	7		2	1					1	2					17
<b>Total:</b>	143	438	653	1,062	125	1,353	147	102	140	108	164	69	152	79	54	6	69	4,864

# All Crimes Reported by Type: 2006



# All Crimes Reported by Month: 2006



# Domestic Violence

The following is a report on domestic-violence cases reported to the Clackamas County Sheriff's Office during 2006. The data used for this report was obtained from the Domestic Violence Database maintained by the **Domestic Violence Enhanced Response Team (DVERT)**.



During 2006, the Sheriff's Office investigated 779 incidents of domestic violence involving 1,062 crimes. The following chart reflects the number of incidents and the number of reported crimes during the last five years. There were also 13 traffic crimes reported during these 779 incidents.

Year	Number of Incidents	Number of Crimes
2002	1,022	1,265
2003	965	1,177
2004	864	1,146
2005	876	1,180
2006	779	1,061

The 779 incidents during 2006 reflect a 11.1% decrease from 2005 and a 13.6% decrease from the prior three-year average of 901.7.

There was at least one child present during 286 (36.7%) of the domestic violence incidents that were reported in 2006.

Six (0.8%) of the incidents involved mutual combat.

In looking at the history of domestic violence in these 779 incidents, we found the following information:

Prior Family History of Domestic Violence	504	64.7%
Prior Incidents Witnessed by Children	7	0.9%
Restraining Order on File	245	31.5%
Stalking Order on File	7	0.9%
Signed Release Agreement on File	22	2.8%

The chart on the following page lists the crimes that were reported as being "domestic violence related" during 2006. Although some of the crimes listed may not involve violence, they were reported or discovered during a domestic violence incident.

# Domestic Violence Related Crimes

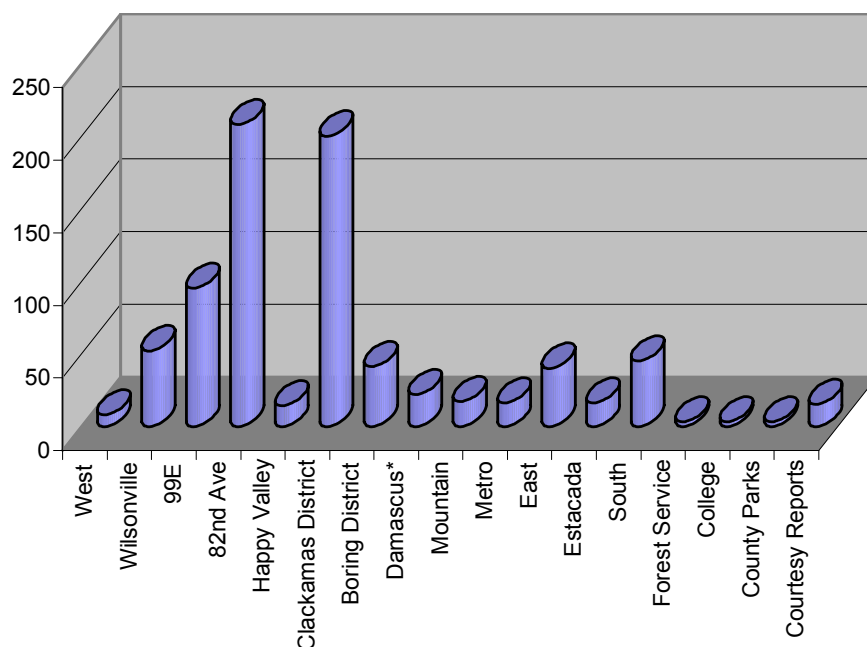
Crime	2006	2005	3 Yr Ave. 2003/04/05
Arson	3		1.0
Assault	306	338	352.7
Attempt Murder	1	1	1.3
Burglary	15	14	15.7
Coercion	5	7	7.0
Contempt of Court	4	17	10.3
Contribute Sex. Delinq. of Minor			0.3
Criminal Mischief	39	28	25.0
Criminal Mistreatment			1.3
Criminal Poss. Forged Instrument			0.3
Criminal Trespass	6	5	5.3
Cruelty to Animals	1	1	1.0
Custodial Interference			0.3
Disorderly Conduct	3		0.0
Drug Charges (all)	7	6	5.7
Endanger Welfare of Minor			0.3
Escape		1	0
Failure to Register as Sex Offender	1	2	1
False Info to Police Officer	1	1	1.0
Forgery	1	1	0
Fugitive	1		0
Harassment	94	89	76.3
Identity Theft	1	1	0
Improper Use of 911			0.3
Initiating a False Police Report	1		0.0
Interfere w/Making Police Report	43	40	39.0
Kidnapping	12	6	10.0
Menacing	131	138	144.3
Murder	2	1	0.7
Parole / Probation Violation	8	1	2.7
Rape	2	4	5.0
Reckless Burning	1		0.0
Recklessly Endangering	11	9	8.3
Resisting Arrest	3	4	2.3
Robbery	1		0.3
Sexual Abuse	1		1.0
Sodomy		1	0.7
Stalking	1		2.3
Strangulation	49	51	26.3
Tamper with a Witness	2	3	4.3
Theft	4	6	4.0
Threat of Harm	7	2	2.3
Unauthorized Use of Vehicle	4	3	1.3
Violation of Release Agreement	24	13	19.0
Violation of Restraining Order	247	363	323.7
Violation of Stalking Order	8	4	26.7
Weapons Violations	10	19	15.3
<b>Total</b>	<b>1,061</b>	<b>1,180</b>	<b>1,146.7</b>

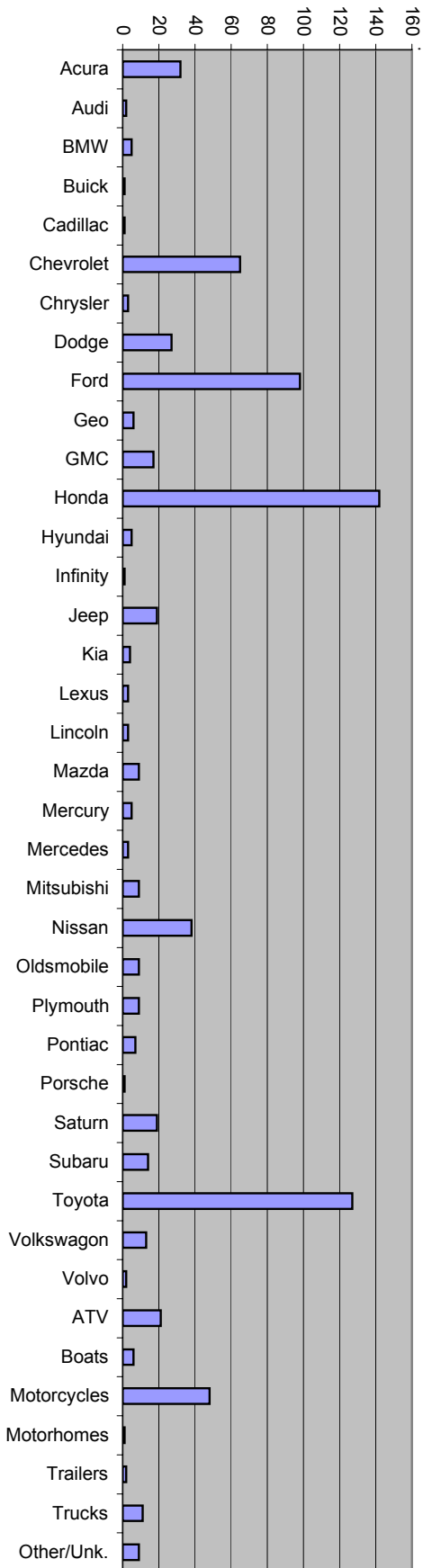


# Stolen Vehicles by Patrol District

2006		2005		Percentage Change		Prior 3 Year Average	
798		1,106		-27.8%		1,156.0 -31.0%	
District	Grids	2006	Percentage of Total	2005 Percentage of Total	3 Year Average Percentage		
West	A1-3	8	1.0%	1.6%	1.7%		
Wilsonville	A4	52	6.5%	6.3%	5.7%		
99E	B1-5	95	11.9%	18.9%	18.0%		
82nd Ave	B7-9	208	26.1%	21.2%	20.4%		
Happy Valley	B10	14	1.8%	0.8%	1.3%		
Clackamas District	B6,B11-14	200	25.1%	25.5%	24.2%		
Boring District	C1-3	41	5.1%	3.4%	5.3%		
Damascus*	C4	22	2.8%	1.9%	N/A *		
Mountain	D1-4	17	2.1%	2.9%	2.4%		
Metro	F1,E1-2	16	2.0%	2.1%	2.5%		
East	E3-8	40	5.0%	2.7%	4.2%		
Estacada	E9	16	2.0%	3.0%	2.2%		
South	F1-7	45	5.6%	5.2%	6.7%		
Forest Service	U1-3	3	0.4%	0.8%	0.7%		
College	X1-2	3	0.4%	0.5%	0.4%		
County Parks	P1-29	3	0.4%	0.2%	0.2%		
Courtesy Reports	CR	15	1.9%	3.0%	3.7%		

\* The City of Damascus was incorporated in November 2004. Prior to that time their crime stats were reported as part of the Boring District.



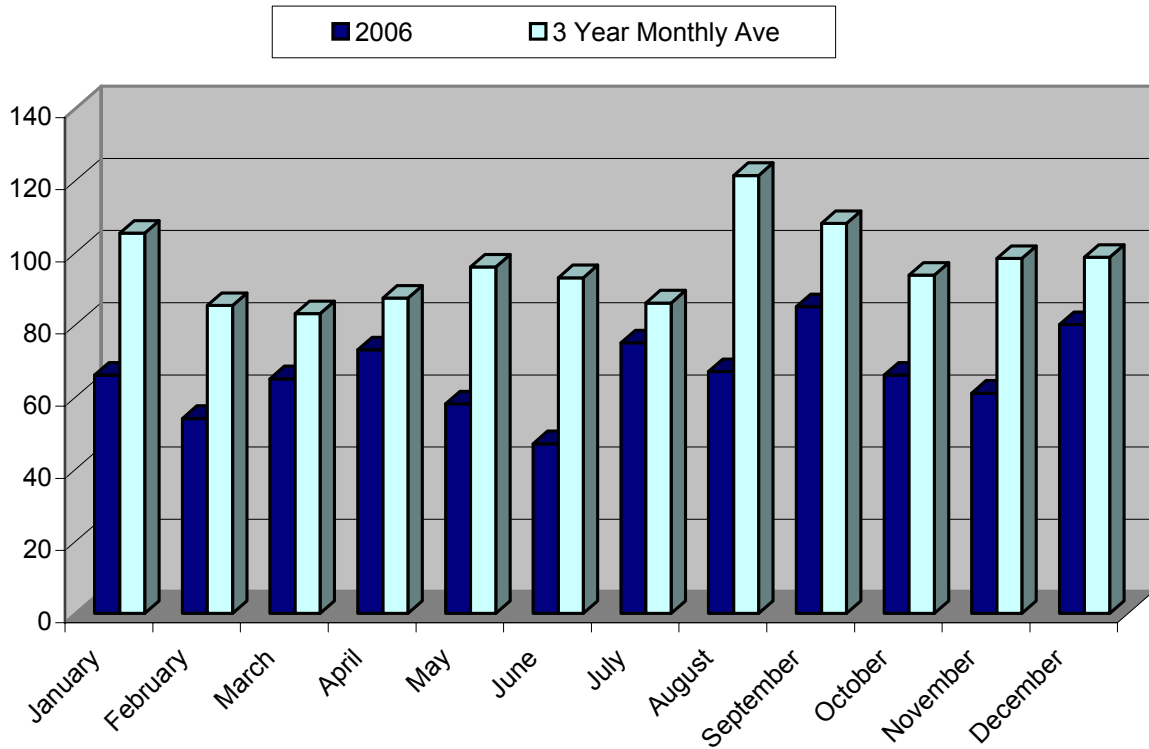


# 2006 Stolen Vehicles by Make

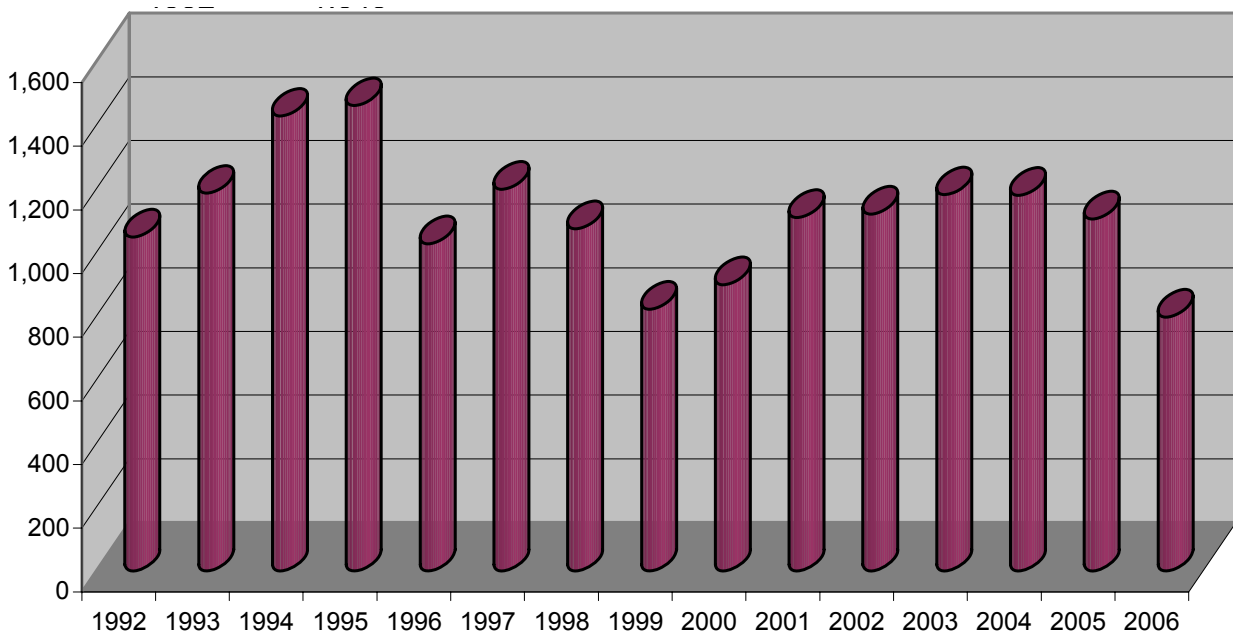
## Top 10 Stolen Vehicles

Rank	Make	Model	Number Stolen
1	Honda	Civic	77
2	Toyota	Camry	60
3	Honda	Accord	54
4	Ford	Pick up	41
5	Toyota	Pick up	36
6	Chevrolet	Pick up	31
7	Acura	Integra	25
8	Jeep	Utility	19
9	Toyota	Utility	15
10	Chevrolet	Utility	14

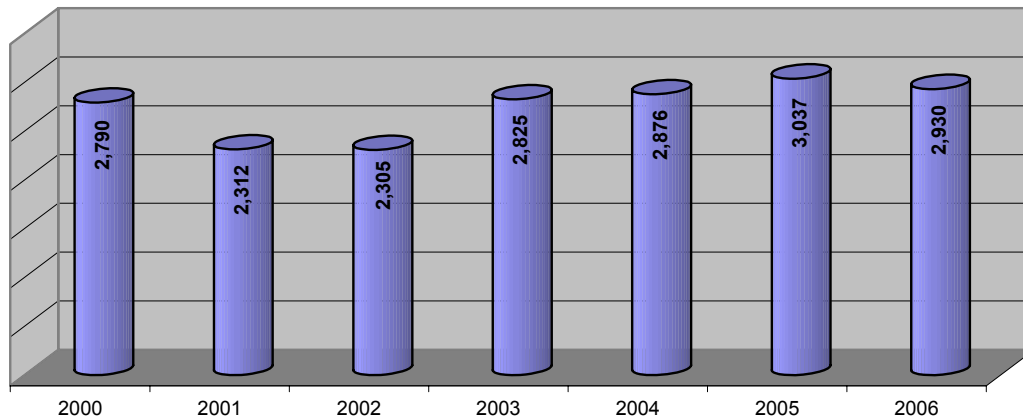
# Stolen Vehicles: 2006 by Month



# Stolen Vehicles: 15-Year History



# Towed Vehicles by Year



# Recovered Stolen Vehicles

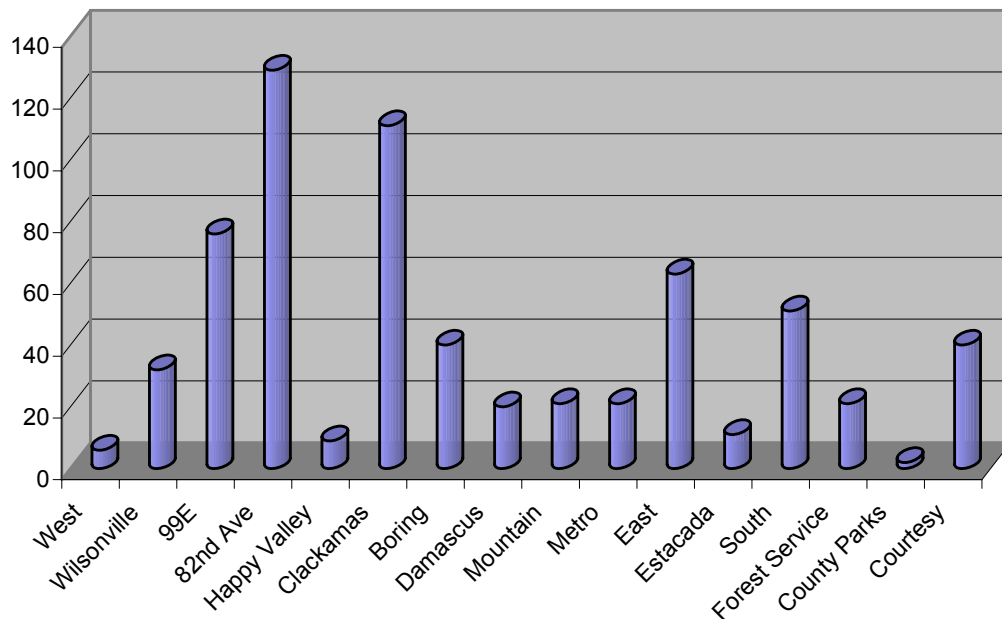
2006	2005	Percentage Change	Prior 3 Year Average		
<b>653</b>	<b>984</b>	<b>-33.6%</b>	<b>978.0</b>	<b>-33.2%</b>	
District	Grids	2006	Percentage of Total	2005% of Total	3 Year Ave. Percentage
West	A1-3	6	0.9%	1.6%	1.6%
Wilsonville	A4	32	4.9%	4.2%	3.6%
99E	B1-5	76	11.6%	13.9%	14.0%
82nd Ave	B7-9	129	19.8%	17.2%	16.3%
Happy Valley	B10	9	1.4%	2.0%	2.6%
Clackamas District	B6,B11-14	111	17.0%	18.5%	16.4%
Boring District	C1-3	40	6.1%	5.9%	9.4%
Damascus*	C4	20	3.1%	3.2%	N/A *
Mountain	D1-4	21	3.2%	4.0%	4.0%
Metro	F1,E1-2	21	3.2%	1.9%	2.5%
East	E3-8	63	9.6%	6.7%	7.7%
Estacada	E9	11	1.7%	1.4%	1.3%
South	F1-7	51	7.8%	7.5%	8.2%
Forest Service	U1-3	21	3.2%	4.6%	4.8%
College	X1-2		0.0%	0%	0.1%
County Parks	P1-29	2	0.3%	0.3%	0.4%
Courtesy Reports	CR	40	6.1%	6.9%	6.1%

\* Damascus was incorporated in November 2004. Prior to that their crime stats were reported as part of the Boring District.

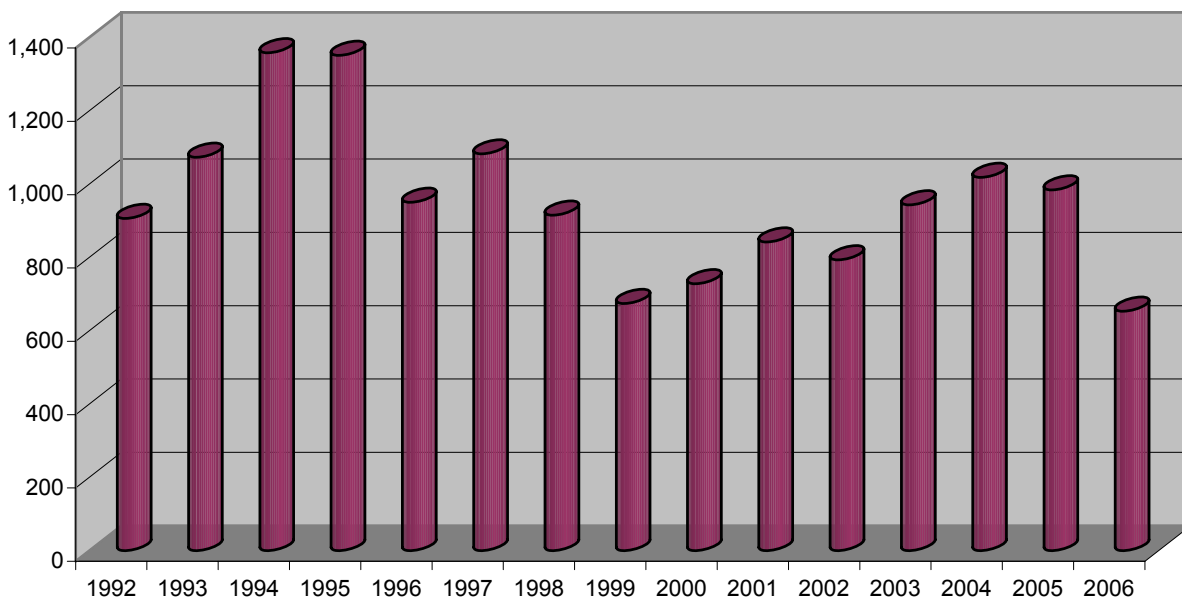
# Recovered Stolen Vehicles

This includes all stolen vehicles recovered by the Clackamas County Sheriff's Office. Some of the vehicles were originally reported stolen to the Clackamas County Sheriff's Office and some were originally reported stolen to other police agencies.

## 2006 Recovered Stolen Vehicles by Patrol District



## 15-Year Recovered Stolen Vehicle History



# CCSO Calls for Service

Type of Call	3 Year Average 2003/04/05	Number of Calls 2006	2006 Change From 3 Year Average	2006 Percentage Change
Abandoned Auto	1,114.7	874	-240.7	-21.6%
Accident, Other (not traffic)	7.3	1	-6.3	-86.4%
Airplane Crash	2.3	2	-0.3	-14.3%
Alarm, Audible	5,990.7	5,244	-746.7	-12.5%
Alarm, Other	41.0	34	-7.0	-17.1%
Alarm, Panic	279.7	251	-28.7	-10.3%
Alarm, Robbery	127.0	152	25.0	19.7%
Alarm, Silent	432.3	450	17.7	4.1%
Animal Complaint	1,104.3	1,166	61.7	5.6%
Arson	36.7	41	4.3	11.8%
Assault	940.0	926	-14.0	-1.5%
Assist Agency	1,120.7	1,245	124.3	11.1%
Assist Fire	619.7	631	11.3	1.8%
Assist / Cover Officer	234.0	186	-48.0	-20.5%
Assist Public	3,181.0	3,100	-81.0	-2.5%
Attempt Contact	120.7	93	-27.7	-22.9%
Attempt to Locate	151.7	131	-20.7	-13.6%
Bomb Threat	6.7	14	7.3	110.0%
Bombing	3.0	3	0.0	0.0%
Burglary, Commercial	323.7	255	-68.7	-21.2%
Burglary, Residential	1,321.3	1,013	-308.3	-23.3%
Criminal Mischief	2,181.0	2,190	9.0	0.4%
Death Investigation	174.7	160	-14.7	-8.4%
Disturbance	1,726.3	1,573	-153.3	-8.9%
Domestic Disturbance	3,063.0	2,920	-143.0	-4.7%
Escape / Walkway	4.7	4	-0.7	-14.3%
Extra Patrol Requested	308.0	254	-54.0	-17.5%
Fireworks	99.7	92	-7.7	-7.7%
Fraud	1,928.0	1,596	-332.0	-17.2%
Harassment	1,562.0	1,409	-153.0	-9.8%
Hazard	1,943.0	1,798	-145.0	-7.5%
Incomplete 911 Call	1,819.7	1,732	-87.7	-4.8%
Juvenile Abuse / Neglect	464.0	384	-80.0	-17.2%
Juvenile Custody Problem	341.7	280	-61.7	-18.0%
Juvenile Disturbance	106.7	73	-33.7	-31.6%
Juvenile Missing (not runaway)	126.0	118	-8.0	-6.3%
Juvenile Problem	526.0	486	-40.0	-7.6%
K9 Incident	51.7	38	-13.7	-26.5%
Kidnap	21.3	9	-12.3	-57.8%
Littering	101.3	133	31.7	31.3%

# CCSO Calls for Service

continued

Type of Call	3 Year Average 2003/04/05	Number of Calls 2006	2006 Change From 3 Year Average	2006 Percentage Change
Marine Patrol	129.3	127	-2.3	-1.8%
Marine Rescue	23.0	29	6.0	26.1%
Menacing	126.0	146	20.0	15.9%
Mental	172.3	184	11.7	6.8%
Minor In Possession of Alcohol	260.3	309	48.7	18.7%
Missing Person	346.7	311	-35.7	-10.3%
Motorist Assist	1,302.7	1,214	-88.7	-6.8%
Noise Complaint	1,502.0	1,410	-92.0	-6.1%
Open Door / Window	103.0	99	-4.0	-3.9%
Ordinance Violation	135.3	243	107.7	79.6%
Parking Complaint	1,134.7	1,235	100.3	8.8%
Promiscuous Shooting	228.3	187	-41.3	-18.1%
Property Lost / Found / Recovered	1,110.3	981	-129.3	-11.6%
Provide Information	1,991.0	2,419	428.0	21.5%
Prowler	352.0	306	-46.0	-13.1%
Rape / Sexual Assault	98.7	93	-5.7	-5.7%
Recovered Stolen Vehicle	550.0	397	-153.0	-27.8%
Robbery, Armed	43.3	37	-6.3	-14.6%
Robbery, Strong Armed	81.0	69	-12.0	-14.8%
Runaway Juvenile	943.7	966	22.3	2.4%
Search & Rescue	48.3	50	1.7	3.4%
Sex Crime - Expose	90.3	73	-17.3	-19.2%
Sexual Molest of Juvenile	131.3	108	-23.3	-17.8%
Shooting	20.0	17	-3.0	-15.0%
Stolen Vehicle / Unauthorized Use	1,424.7	1,087	-337.7	-23.7%
Suicide Attempt / Threat	563.3	553	-10.3	-1.8%
Suspicious Circumstances	2,286.7	2,127	-159.7	-7.0%
Suspicious Person	2,553.0	2,141	-412.0	-16.1%
Suspicious Vehicle	2,628.3	1,931	-697.3	-26.5%
Theft / Shoplift	8,203.7	6,432	-1771.7	-21.6%
Threat	1,004.0	896	-108.0	-10.8%
Traffic Accident, Injury	365.7	340	-25.7	-7.0%
Traffic Accident, Non-Injury	2,183.3	2,284	100.7	4.6%
Traffic Accident, Unknown Injury	921.0	1,008	87.0	9.4%
Traffic Complaint	2,122.3	2,485	362.7	17.1%
Trespassing	817.3	633	-184.3	-22.6%
Unknown Type Call	744.7	627	-117.7	-15.8%
Unwanted	992.3	877	-115.3	-11.6%
Vice Complaint, Drugs	762.3	819	56.7	7.4%
Vice Complaint, Prostitution	18.3	13	-5.3	-29.1%
Violation of Restraining Order	487.7	359	-128.7	-26.4%
Welfare Check	1,441.0	1,247	-194.0	-13.5%
<b>Total:</b>	<b>74,150.3</b>	<b>67,930</b>	<b>-6,220.3</b>	<b>-8.4%</b>

# CCSO Calls for Service

continued

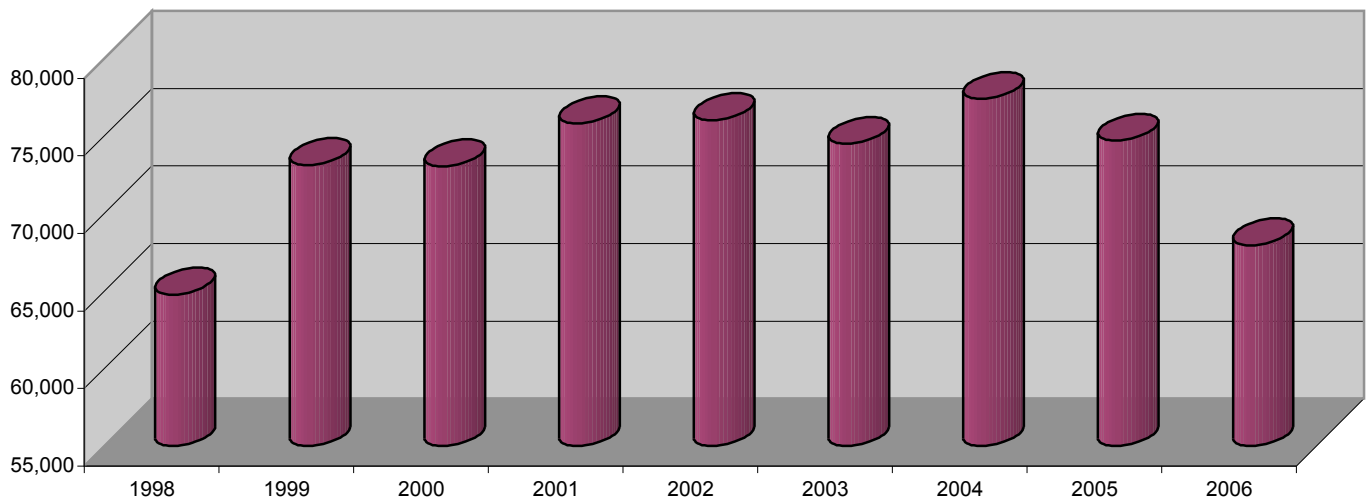
Type of Call	3 Year Average 2003/04/05	Number of Calls 2006	2006 Change From 3 Year Average	2006 Percentage Change
<b>Person Crimes Calls</b> Percentage of Total	<b>5,229.3</b> 7.1%	<b>4,756</b> 6.4%	<b>-473.3</b>	<b>-9.1%</b>
<b>Property Crimes Calls</b> Percentage of Total	<b>16,973.7</b> 22.9%	<b>14,681</b> 19.8%	<b>-2,292.7</b>	<b>-13.5%</b>
<b>Behavioral Crimes Calls</b> Percentage of Total	<b>15,678.7</b> 21.1%	<b>14,988</b> 20.2%	<b>-690.7</b>	<b>-4.4%</b>
<b>Miscellaneous Call Types</b> Percentage of Total	<b>36,268.7</b> 48.9%	<b>33,505</b> 45.2%	<b>-2,763.7</b>	<b>-7.6%</b>

<b>Alarms</b> Percentage of Total	<b>6,870.7</b> 9.3%	<b>6,131</b> 8.3%	<b>-739.7</b>	<b>-10.8%</b>
<b>Disturbance Type Calls</b> Percentage of Total	<b>9,004.0</b> 12.1%	<b>8,283</b> 11.2%	<b>-721.0</b>	<b>-8.0%</b>
<b>Suspicious Activity Calls</b> Percentage of Total	<b>7,820.0</b> 10.5%	<b>4,748</b> 6.4%	<b>-3,072.0</b>	<b>-39.3%</b>
<b>Nuisance Type Calls</b> Percentage of Total	<b>3,046.0</b> 4.1%	<b>2,696</b> 3.6%	<b>-350.0</b>	<b>-11.5%</b>

Other Activity Type of Call	3 Year Average 2003/04/05	Number of Calls 2006	2006 Change From 3 Year Average	2006 Percentage Change
<b>Boat Stop</b>	<b>165.3</b>	<b>190.0</b>	<b>24.7</b>	<b>14.9%</b>
<b>Civil Service</b>	<b>12,164.0</b>	<b>12,656.0</b>	<b>492.0</b>	<b>4.0%</b>
<b>Detail</b>	<b>4,301.3</b>	<b>4,613.0</b>	<b>311.7</b>	<b>7.2%</b>
<b>Follow-Up Contact</b>	<b>10,862.0</b>	<b>8,750.0</b>	<b>-2,112.0</b>	<b>-19.4%</b>
<b>Foot Patrol</b>	<b>323.7</b>	<b>277.0</b>	<b>-46.7</b>	<b>-14.4%</b>
<b>Home Visit</b>	<b>960.7</b>	<b>2,648.0</b>	<b>1,687.3</b>	<b>175.6%</b>
<b>Premise Check</b>	<b>1,168.3</b>	<b>1,404.0</b>	<b>235.7</b>	<b>20.2%</b>
<b>Pursuit</b>	<b>58.3</b>	<b>33.0</b>	<b>-25.3</b>	<b>-43.4%</b>
<b>Subject Stop</b>	<b>3,263.0</b>	<b>3,091.0</b>	<b>-172.0</b>	<b>-5.3%</b>
<b>Suspect Contact</b>	<b>839.0</b>	<b>883.0</b>	<b>44.0</b>	<b>5.2%</b>
<b>Suspicious Vehicle Stop</b>	<b>3,158.0</b>	<b>3,466.0</b>	<b>308.0</b>	<b>9.8%</b>
<b>Traffic Stop</b>	<b>34,182.3</b>	<b>32,070.0</b>	<b>-2,112.3</b>	<b>-6.2%</b>
<b>Transport</b>	<b>344.7</b>	<b>366.0</b>	<b>21.3</b>	<b>6.2%</b>
<b>Warrant Service</b>	<b>1,574.0</b>	<b>2,294.0</b>	<b>720.0</b>	<b>45.7%</b>



## Calls for Service: Yearly Totals



## Property Room: 15-Year History

Year	Number of Cases	Items Received	Items Released / Destroyed
1992	5,404	10,116	3,299
1993	5,843	8,494	3,787
1994	4,491	12,724	9,741
1995	4,977	17,007	10,770
1996	5,719	17,816	14,692
1997	6,568	20,461	16,861
1998	6,660	19,107	14,549
1999	6,997	21,594	10,792
2000	7,172	21,733	14,752
2001	7,144	21,707	13,665
2002	6,509	19,915	21,228
2003	5,790	17,597	21,791
2004	6,607	18,460	18,014
2005	6,155	20,051	21,579
2006	5,868	16,965	18,037

# S.W.A.T.



**T**he Clackamas County Sheriff's Office **Special Weapons and Tactics team** (S.W.A.T.) responded to 14 incidents in 2006.

Eight of the suspects surrendered, 3 were subdued, 1 escaped and 3 were not at the scene.

The following chart shows how many S.W.A.T. incidents occurred in each patrol district in 2006.

<b>District</b>	<b>Number of Incidents</b>	<b>Percentage of Incidents</b>
West	1	7.1%
Wilsonville		
99E	2	14.3%
82nd Ave	1	7.1%
Clackamas	1	7.1%
Happy Valley		
Boring		
Damascus	1	7.1%
Mountain	1	7.1%
Metro	1	7.1%
East	2	14.3%
Estacada		
South	3	21.4%
Forest Service		
Outside Agency Jurisdiction	1	7.1%

The following chart shows the initial situation classification for each S.W.A.T. call-out.

<b>Type of Situation</b>	<b>Number of Incidents</b>	<b>Percentage of Incidents</b>
Arrest Warrant	2	14.3%
Assist Outside Agency	5	35.7%
Domestic Disturbance	2	14.3%
Homicide	1	7.1%
Other Type Incident	2	14.3%
Search Warrant: Other	2	14.3%
Search Warrant: Drugs	2	14.3%

# Traffic

**T**he Clackamas County Sheriff's Office investigated 1,560 traffic accidents in 2006. There were 11 people killed in 11 separate accidents.

The top two causes for accidents in 2006 were careless driving (183) and excessive speed (177). Alcohol was involved in 144 (9.2%) of the accidents. Two of the fatal accidents were alcohol-related.



Total Accidents Reported	1,560	
Day Time (4:00 a.m. – 8:00 p.m.)	1,141	73.1%
Night Time (8:00 p.m. – 4:00 a.m.)	419	26.9%
Total Injury Accidents	514	32.9%
Possible	209	
Minor	215	
Serious	79	
Fatal	11	
Alcohol Related	144	9.2%
Hit & Run	643	41.2%

The following chart shows the top 10 intersections based on the number of accidents reported to the Clackamas County Sheriff's Office at those intersections during 2006:

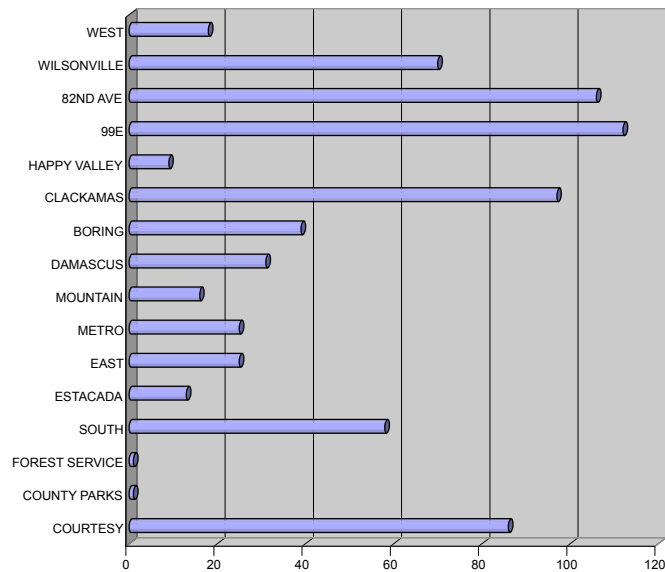
Intersection	Number of Accidents	Type of Injury			
		Serious	Minor	Possible	None
SE 82 <sup>nd</sup> Ave/SE King Rd	8		2	1	5
S Hwy 170/S Barnards Rd	6		2	1	3
SE 122 <sup>nd</sup> Ave/SE Sunnyside Rd	6		1	2	3
SE Harmony Rd/SE Fuller Rd	6		1	2	3
SW Wilsonville Rd/SW Boones Ferry Rd	6			3	3
S Arndt Rd/S Knights Bridge Rd	5	1	1	1	2
SE 222 <sup>nd</sup> Dr/SE Borges Rd	5	1	1	1	2
S Hwy 213/S Molalla Ave	5		3		2
SE 222 <sup>nd</sup> Dr/SE Tillstrom Rd	5		1	1	3
SE 82 <sup>nd</sup> Dr/SE Hwy 212	5		1		4
SW Town Center Loop W/SW Citizens Dr	5			1	4

The Sheriff's Office issued 18,183 traffic citations in 2006. The top two charges were speed-related violations (4,864) and driving while suspended/revoked (2,169).

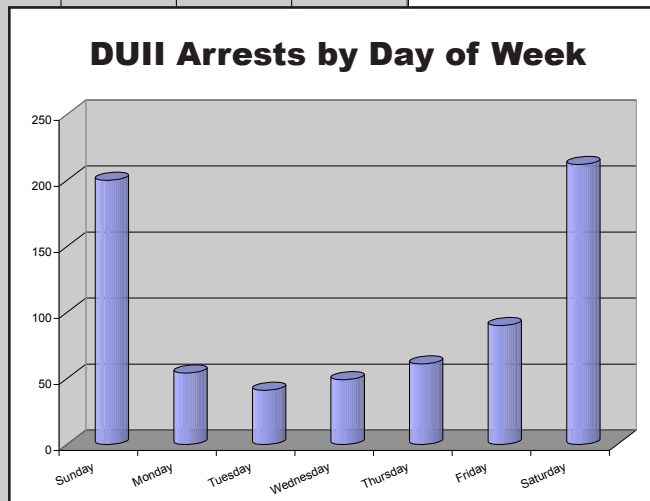
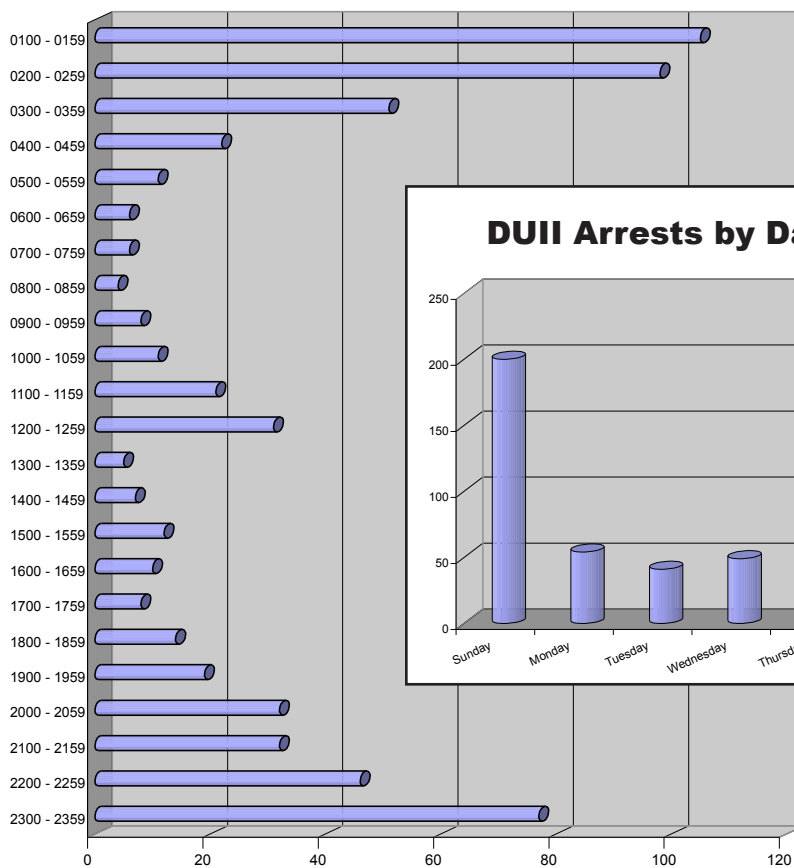
The Motor Unit issued 8,217 (45.2%) of the citations.

The Sheriff's Office issued 707 citations for Driving Under the Influence of Intoxicants (DUII) in 2006. Of the 707 people cited for DUII, 159 (22.5%) were female and 548 (77.5%) were male. Sixty nine were under 21 years old, with the youngest being 16 years old.

# DUI Arrests by Patrol District



# DUI Arrests by Time of Day



# Death Investigations

Cause of Death	2006		2005		Prior 3 Year Average	
Accident (Auto)	11	4.6%	13	4.7%	10.0	3.5%
Accident (Industrial)	1	0.4%	1	0.4%	1.0	0.3%
Accident (Other)	2	0.8%	6	2.2%	8.3	2.9%
Accidental Shooting		0%	2	0.7%	1.0	0.3%
Aircraft Crash		0%		0%	0	0%
Asphyxiation		0%		0%	0	0%
Choking		0%		0%	0.3	0.1%
Crushed		0%		0%	0	0%
Drowning	6	2.5%	1	0.4%	1.3	0.5%
Drug Overdose	4	1.7%	4	1.4%	3.7	1.3%
Electrocution		0%		0%	0.0	0.0%
Falling Object		0%		0%	0.0	0.0%
Fire		0%		0%	1.0	0.3%
Infant Death	2	0.8%	2	0.7%	0.7	0.2%
Manslaughter		0%		0%	0.3	0.1%
Murder	5	2.1%	4	1.4%	3.7	1.3%
Murder / Suicide		0%	1	0.4%	0.7	0.2%
Natural Causes	173	71.8%	199	72.1%	214.0	74.4%
Negligent Homicide		0%		0%	0	0%
Shot By Police		0%	3	1.1%	1.3	0.5%
Shot During Crime		0%		0%	0	0.0%
S.I.D.S Death		0%		0%	0.7	0.2%
Subject Fell		0%		0%	0.3	0.1%
Suffocation		0%		0%	0	0%
Suicide	16	6.6%	17	6.2%	26.0	9.0%
Suspicious Death		0%	1	0.4%	1	0.2%
Unknown / Other	21	8.7%	22	8.0%	12.7	4.4%
<b>Total:</b>	<b>241</b>		<b>276</b>		<b>287.7</b>	

# 2006 Sheriff's Office Awards

## Non-Sworn Sheriff's Employee of the Year

Al Jacobs

## Services Deputy Sheriff of the Year

Detective Geary Hellman

## Corrections Deputy of the Year

Deputy Bryan Koppert

## Patrol Deputy Sheriff of the Year (Lynn Forristall Award)

Deputy Karen Moss

## Life Saving Award

Deputy Mitch Beyer

## Department Unit Commendation

Civilian Range Staff

Background Investigation Unit

Cadets

Search & Rescue Team

Traffic Enforcement Motor Unit

Jail Food Services Unit

## Department Commendation

Deputy Gil Millett

Community Service Officer Julie Fanger

## Meritorious Service Award

Lori Vicars

Deputy Gale Schrepfer

Sergeant Lee Eby

Reserve Deputy Jack Hipp

## Citizen Awards

### Distinguished Service Award

Ronald Courtinharp

Pat Moran

### Public Service Award

Debra Eurich

David Zapata

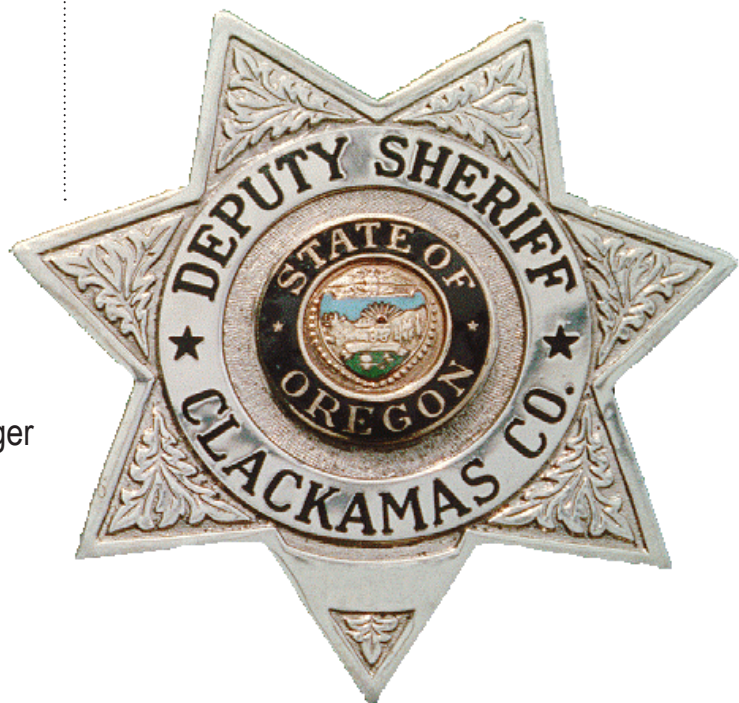
Mountain Wave Communications Group

Portland Mountain Rescue

Joanne Denning

Daniel Cook

Leo Hoeft





Photos courtesy PATRICK SHERMAN/CLACKAMAS REVIEW and JULIE BLISS

## Citizens Informational Sheriff's Academy (CISA)

The Sheriff's Office hosts an annual **Citizens Informational Academy** that provides opportunity for members of the community to receive education on the functions of the Sheriff's Office.

The goal of the academy is to foster positive relationships between the community and its Sheriff's Office. Graduates will gain an understanding of the operation of the Sheriff's Office and develop an awareness and appreciation of the various challenges and

decisions faced daily, by the Sheriff's Office; as well become goodwill ambassadors. Even though citizens attending the academy are given information in numerous police-related subjects, the graduates are not prepared for nor expected to conduct any police services.

More information and application forms can be found at our Web site, [www.co.clackamas.or.us/sheriff](http://www.co.clackamas.or.us/sheriff) (Click on "Citizen Academy") or by calling (503) 655-8819.



## **For More Information**

---

For more information about the Clackamas County Sheriff's Office and the material in this report, please contact:

**Clackamas County Sheriff's Office**

**Crime Analysis Unit**

2223 Kaen Rd

Oregon City, OR 97045

(503) 655-8823

You can also visit the  
Clackamas County Sheriff's Office Web site at  
**[www.co.clackamas.or.us/sheriff](http://www.co.clackamas.or.us/sheriff)**