

CLACKAMAS COUNTY BOARD OF COUNTY COMMISSIONERS
BOARD OF NORTH CLACKAMAS PARKS & RECREATION DISTRICT

Study Session Worksheet

Presentation Date: 4/21/2015 **Approx Start Time:** 10:30am **Approx Length:** 30 Min

Presentation Title: North Bank Clackamas River Greenway

Department: North Clackamas Parks & Recreation District

Presenters: Staff: Gary Barth, Director of NCPRD; Jeroen Kok, Planning, Development & Resource Manager

Other Invitees: NCPRD: Tonia Burns, Water & Environmental Services: Leah Johanson, Clackamas County Development Agency: Dan Johnson.

WHAT ACTION ARE YOU REQUESTING FROM THE BOARD?

Direction from the Board regarding an effort to establish an initial segment of the North Bank Clackamas River Greenway within the NCPRD boundary, in partnership with WES and the County Development Agency.

EXECUTIVE SUMMARY:

The North Clackamas Parks & Recreation District (NCPRD) is coordinating with Clackamas County Water & Environmental Services (WES) and the Clackamas County Development Agency (DA) to assess the establishment of an initial segment of the Clackamas River Greenway System (Natural Area and Trail), currently envisioned to extend from the Carver Area to I-205.

The Greenway has been a goal for over 20 years, and is an adopted goal in the Clackamas County Comprehensive Plan (Ch. 10, attached). The greenway concept is also supported by NCPRD District Master Plans, public surveys, the Metro Regional Trails & Greenways Plan, and the Clackamas Industrial Area & North Bank of the Clackamas River Design Plan. Additionally, NCPRD has recognized the need to move forward with the preparation of a Clackamas River Greenway Master Plan, and has proposed this project for funding in the upcoming budget year. This planning effort will include detailed opportunity and constraints assessments, partnership and funding discussions, as well as public outreach and education.

WES is currently working on the design of a regional stormwater and natural area restoration project on what is known as the Carli property. NCPRD is working with the design team to explore opportunities for public access and environmental education through the construction of a trail system, overlooks, interpretive signage and public access/parking. The 15 acre site is situated on the south side of the Clackamas Industrial Area, and is bordered by Carli Creek on the north and the Clackamas River on the south, providing 3,800 lineal feet of river frontage.

Located immediately east of the Carli property is the Development Agency Clackamas Industrial Area (CIAO) site which includes approximately 60 acres. The southern portion of the site is occupied by an existing and future system of stormwater and water quality ponds, located in the floodplain/floodway of the river. The Development Agency has indicated that they wish to eliminate the liability and maintenance responsibility associated with the ponds for future landowners and tenants of the industrial development. In order to accomplish this, and help support the creation of an amenity, they have indicated an interest in deeding the property to NCPRD as part of the effort to establish a greenway that provides for public access, habitat and water quality enhancements and a regional trail that will benefit future tenants and businesses located at the site, as well as the public.

Other public ownerships exist occur both up and downstream from the WES and DA properties (map attached). Significant public ownership exists downstream through the Clackamas River Water District (CCSD #1, Riverside Park) site, as well as land owned by the State of Oregon and PGE. Upstream, CCSD#1 also owns a few parcels.

A few privately owned parcels are intermingled in this area. The parcels are relatively small and are mostly designated as critical areas (floodplain, floodway, steep slopes, riparian habitat, etc.). As a result, there may be opportunities for additional acquisitions to provide connectivity and contiguous public access through ownership or easements. At least one of these property owners has expressed interest in selling.

FINANCIAL IMPLICATIONS (current year and ongoing):

NCPRD is interested in pursuing grant funding and other financial partnerships in an effort to secure additional ownership interests in order to take advantage of property owners interested in selling land and/or easements. Due to very limited financial resources, NCPRD will pursue opportunities that require little to no investments by the District.

Regarding the WES and DA sites, NCPRD will negotiate Intergovernmental Agreements with WES and the DA regarding future management and maintenance responsibilities. Through the annual budget process, NCPRD will strive to align available financial resources with the most important operation, facility, programming and capital investment needs of the District.

LEGAL/POLICY REQUIREMENTS:

N/A

PUBLIC/GOVERNMENTAL PARTICIPATION:

Based on the Board's direction, NCPRD staff will continue to meet with representatives from WES and the DA to discuss continued efforts to establish public access, open space and environmental education opportunities that compliment the stormwater and water quality management, habitat restoration and economic development efforts underway. NCPRD staff will also engage potential funding and project support partners in an effort to secure funding for acquisition and development efforts that will have a minimal financial impact on the District.

Starting next fall, but subject to budget approval, NCPRD will initiate the development of a Clackamas River Greenway Master Plan, to include public outreach.

OPTIONS:

1. Direct staff to advance analysis of Greenway partnership efforts regarding the WES and DA properties, discuss partnership opportunities with the other public agencies with ownership in the area, and also pursue funding to secure additional public ownership and/or easements on private properties along the Greenway.
2. Direct staff to limit partnership effort to the WES and DA properties only, at this time.
3. Direct staff to discontinue efforts to establish a North bank Clackamas River Greenway at this time.


RECOMMENDATION:

Staff recommends that the Board approve option #1 as the timing and opportunity to establish the beginnings of a North Bank Clackamas River Greenway are right given the status of the WES and DA properties and projects that are moving forward. Additionally, discussion with other potential partners is likely to be well received and may build momentum for additional planning and implementation, including land or easement acquisition.

ATTACHMENTS:

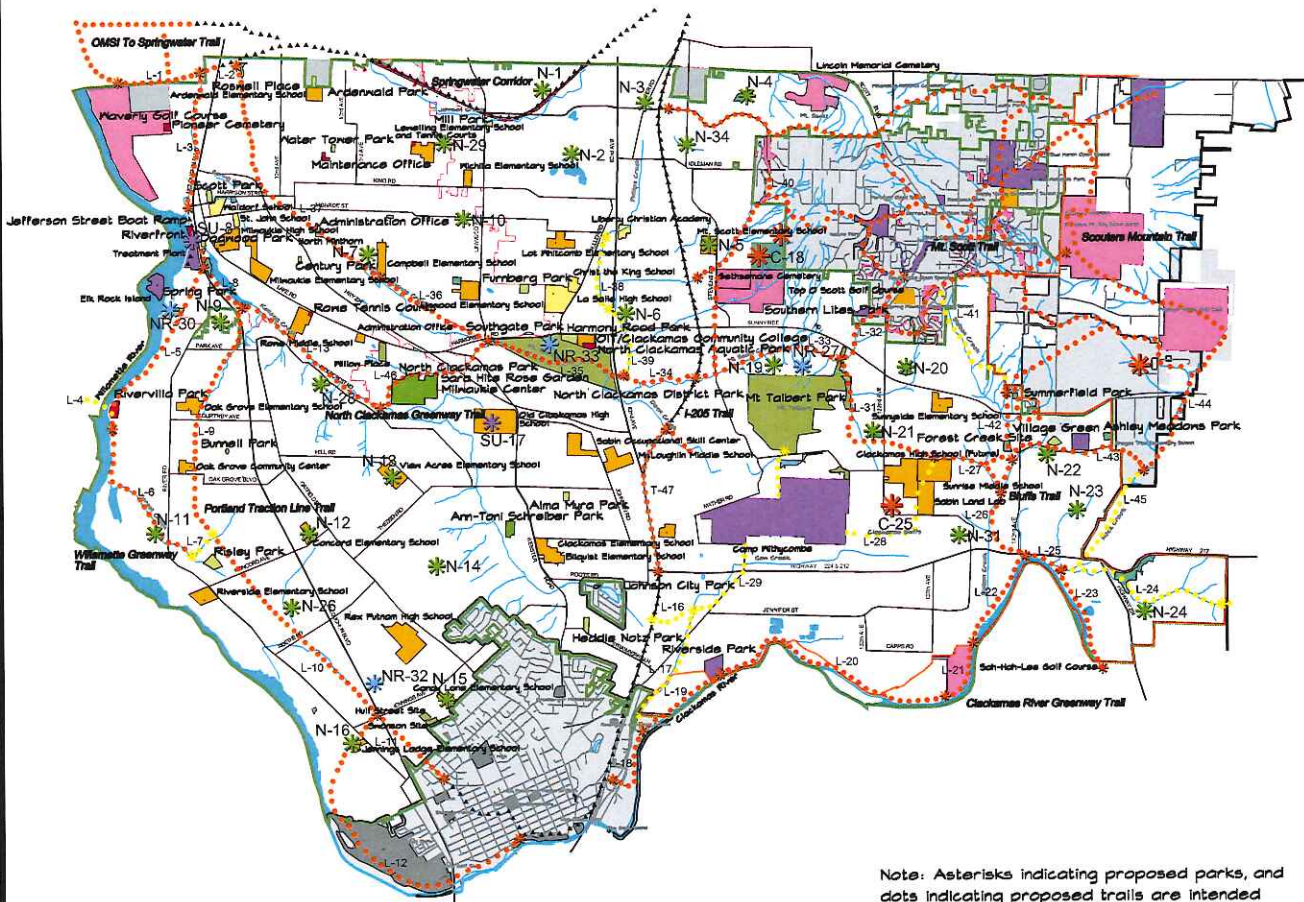
Maps

SUBMITTED BY:

Division Director/Head Approval  NCPRD
Department Director/Head Approval  Director BCS
County Administrator Approval _____ Administrator BCS

For information on this issue or copies of attachments, please contact Jeroen Kok @ 503-742-4421

North Clackamas Parks & Recreation District



Note: Asterisks indicating proposed parks, and dots indicating proposed trails are intended to show a general location only. The actual location will be based on land availability, acquisition cost, and the owner's willingness to sell.

Legend:

- Planning Area Boundary
- Park District Boundary
- Urban Growth Boundary
- Neighborhood Parks
- Community Parks
- Special Use Areas
- Natural Resource Area
- Undeveloped Parkland
- Miscellaneous Open Space
- Other Public Land
- Private Facilities
- Public Schools
- Private Schools
- ▲▲ Existing Multi-Use Trails
- Proposed Linear Park Segment (High Priority)
- Proposed Linear Park Segment (Very Long Term)
- ★ C- Proposed Community Park
- ★ N- Proposed Neighborhood Park
- ★ SU- Proposed Special Use Facility
- ★ NR- Proposed Natural Resource Area

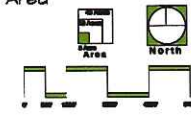
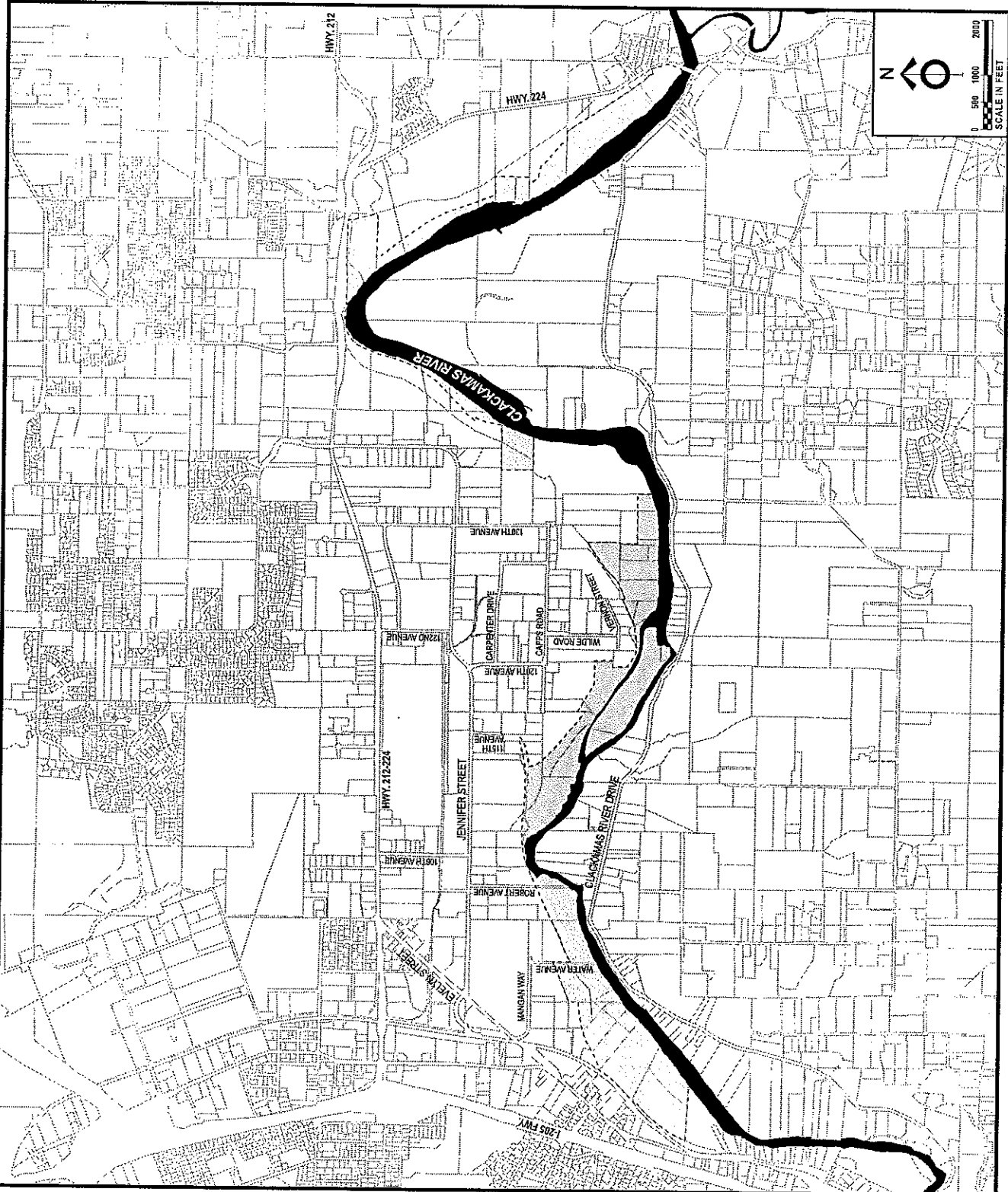


Figure 4.3
Facilities Plan
2002 Master Plan Update



**North Bank Clackamas River
Greenway**

ELIGIBLE FOR OPEN SPACE MANAGEMENT ZONING DISTRICT
 IF IN PUBLIC OR SEMI-PUBLIC OWNERSHIP

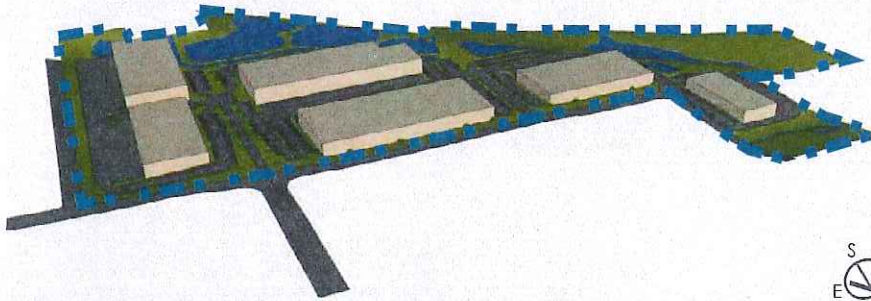
CLACKAMAS COUNTY
COMPREHENSIVE PLAN

●

MAP X-CR-1

Clackamas County Employment Lands Project

CIAO Development Site



- SITE AREA: 59.75 ACRES
- BUILDING AREA: 563,250 SF
- PARKING: 832 STALLS
- SITE BOUNDARY:
- STORM POND:
- LANDSCAPING:
- PAVED SURFACE:





North Bank Clackamas River Greenway

Clackamas River Trail: Proposed and Conceptual Trail



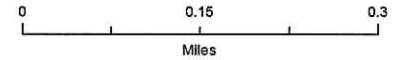
Legend

Greenway Trail

- Proposed Trail Segment
- - - Conceptual Trail Segment

Property Owners

- CLACKAMAS CO. DEV. AGENCY
- CLACKAMAS CO. SERV DIST #1
- CLACKAMAS RIVER WATER DIST
- STATE OF OREGON
- PRIVATE OWNER



GEOGRAPHIC INFORMATION SYSTEMS
 CLACKAMAS COUNTY
 1000 WEST 10TH AVENUE, SUITE 100
 CLACKAMAS, OREGON 97015

The information on this map was derived from digital databases from Clackamas County, OR. The data is based on the best data available to Clackamas County. Clackamas County cannot accept any responsibility for any errors, omissions, or positional accuracy, and therefore, there are no warranties which accompany this product. Although information from Land Surveys may have been used in the creation of this product, in no way does this product represent or constitute a Land Survey. Users are strongly cautioned to verify all information before making any decisions.

The information provided was derived from digital databases from Clackamas County's GIS. Although we strive to provide the best data we can, we sometimes use data developed by jurisdictions outside Clackamas County. Therefore, Clackamas County cannot accept any responsibility for any errors, omissions, or positional accuracy, and therefore, there are no warranties which accompany this product. Although information from Land Surveys may have been used in the creation of this product, in no way does this product represent or constitute a Land Survey. Users are strongly cautioned to verify all information before making any decisions.

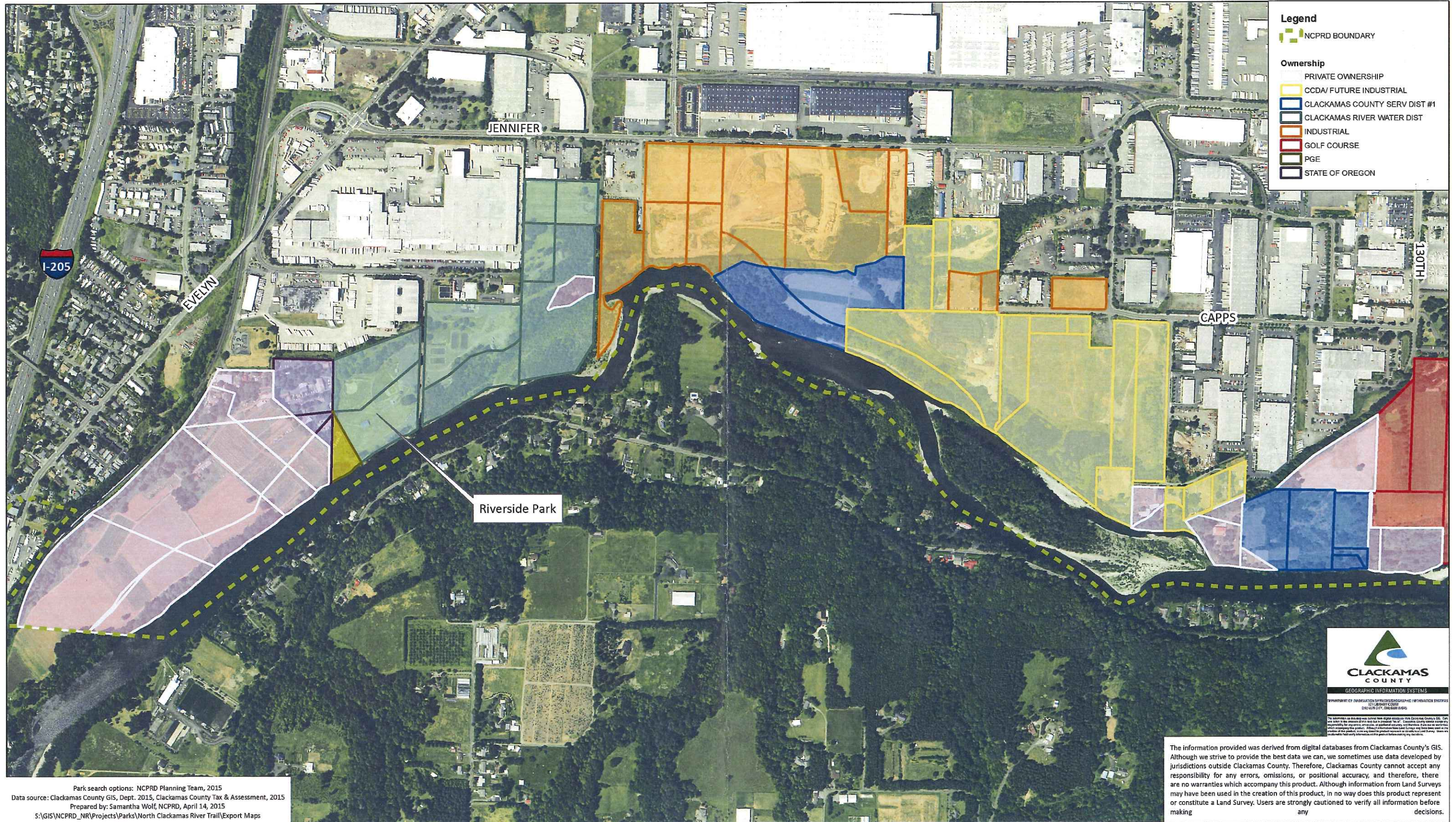
Acquisition planning: NCPRO Natural Areas and Parks Planning Team
 Data source: Clackamas County GIS Dept., 2015; NCPRO, 2015; FEMA, 2008.
 Map prepared by: Samantha Wolf, NCPRO, April 14, 2015
 S:\GIS\NCPRO_RRP\Projects\Parks\North Clackamas River Trail\Export Maps



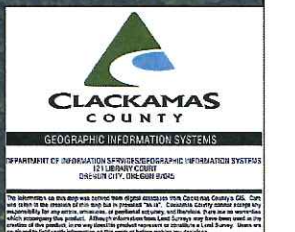
North Clackamas Parks & Recreation District: North Bank Greenway



0 0.225 0.45 Miles



Park search options: NCPRD Planning Team, 2015
 Data source: Clackamas County GIS, Dept. 2015, Clackamas County Tax & Assessment, 2015
 Prepared by: Samantha Wolf, NCPRD, April 14, 2015
 S:\GIS\NCPRD_NR\Projects\Parks\North Clackamas River Trail\Export Maps



The information provided was derived from digital databases from Clackamas County's GIS. Although we strive to provide the best data we can, we sometimes use data developed by jurisdictions outside Clackamas County. Therefore, Clackamas County cannot accept any responsibility for any errors, omissions, or positional accuracy, and therefore, there are no warranties which accompany this product. Although information from Land Surveys may have been used in the creation of this product, in no way does this product represent or constitute a Land Survey. Users are strongly cautioned to verify all information before making any decisions.